

|                |                |         |       |      |           |         |     |
|----------------|----------------|---------|-------|------|-----------|---------|-----|
| Classification | NAPOPC_XPE FAQ |         |       |      | No.       | 1-007-E |     |
| Author         | James          | Version | 1.0.0 | Date | 2010/7/12 | Page    | 1/4 |

## How to use DS/PDS-700 in NAPOPC\_XPE ?

*Applies to:*

| <i>Platform</i> | <i>OS version</i> | <i>NAPOPC version</i>   |
|-----------------|-------------------|-------------------------|
| <i>XPAC</i>     | <i>XPE</i>        | <i>NAPOPC_XPE v1.12</i> |
|                 |                   |                         |
|                 |                   |                         |
|                 |                   |                         |

DS/PDS product is a Device Server which could be the virtual COM port of your PC. Device Server could gather the data of devices, and send it to your PC via Ethernet.

In this document, we will explain how to establish the communication between NAPOPC\_XPE and PDS-720, and then exchange data with I-7012 via PDS-720.

### There are two ways to communicate with PDS-720:

Search (Automatic) / Add Device (Manual)

#### Search (Automatic)

##### Step 1

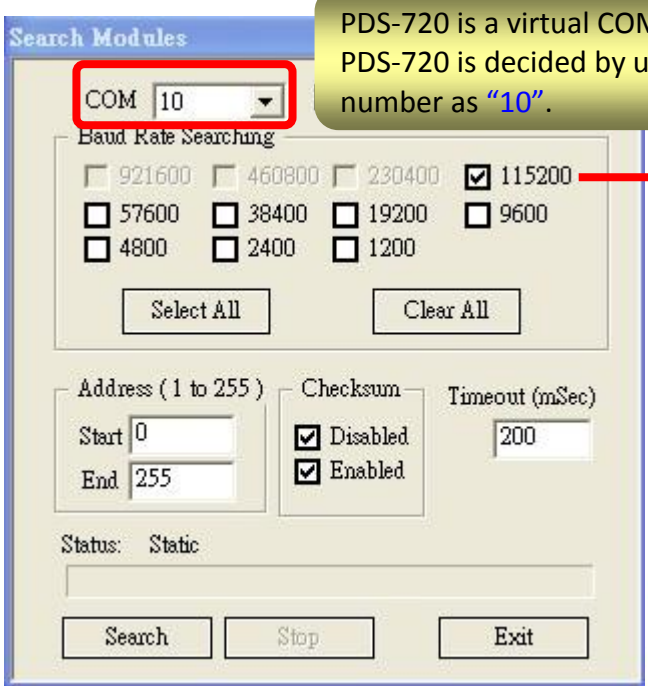
Set up PDS-720 as a virtual COM port. You have to do it via [VxComm](#). Please refer to PDS Manual(4. [Setting up the PDS module](#)). And connect PDS-720 to I-7012 via RS-485.

##### Step 2

Start NAPOPC\_XPE. Click "Search" on the Toolbar, it will show you a dialog for searching modules.



|                |                |         |       |      |           |         |     |
|----------------|----------------|---------|-------|------|-----------|---------|-----|
| Classification | NAPOPC_XPE FAQ |         |       |      | No.       | 1-007-E |     |
| Author         | James          | Version | 1.0.0 | Date | 2010/7/12 | Page    | 2/4 |

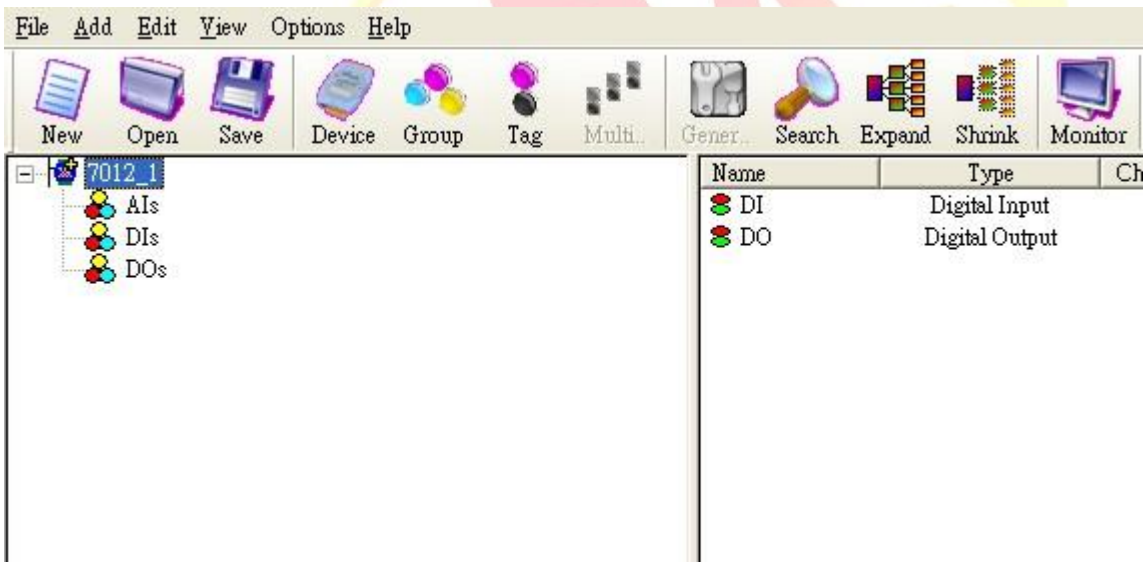


PDS-720 is a virtual COM port of XPAC, and the COM port number of PDS-720 is decided by user. In this demonstration, we set the COM port number as "10".

Choose the Baud rate of COM10

### Step 3

Then you could communicate with I-7012 via PDS-720.



|                |                |         |       |      |           |         |     |
|----------------|----------------|---------|-------|------|-----------|---------|-----|
| Classification | NAPOPC_XPE FAQ |         |       |      | No.       | 1-007-E |     |
| Author         | James          | Version | 1.0.0 | Date | 2010/7/12 | Page    | 3/4 |

## Add Device (Manual)

### Step1.

Set up PDS-720 as a virtual COM port. You have to do it via [VxComm](#). Please refer to PDS Manual(4. [Setting up the PDS module](#)). And connect PDS-720 to I-7012 via RS-485.

### Step 2

Start NAPOPC\_XPE. Click "Device" on the Toolbar, it will show you a dialog for adding devices.



The protocol of I-7012 is DCON.

Choose series and name of I-7012. Please ensure the name is correct.

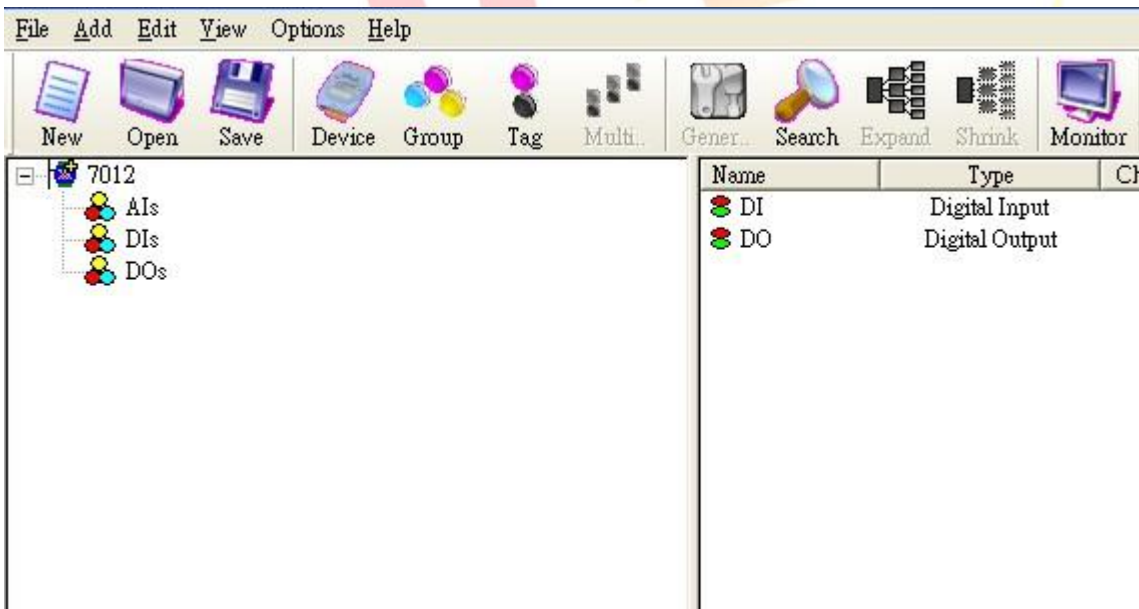
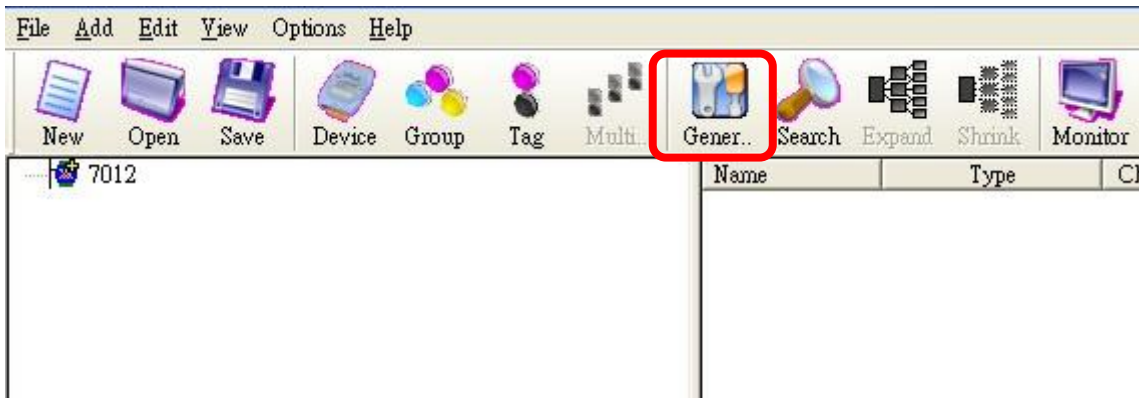
Check the COM port that PDS-720 means, and its baud rate. (COM10/115200 in this demonstration)

After setting, click "OK" to add I-7012.

|                |                |         |       |      |           |         |     |
|----------------|----------------|---------|-------|------|-----------|---------|-----|
| Classification | NAPOPC_XPE FAQ |         |       |      | No.       | 1-007-E |     |
| Author         | James          | Version | 1.0.0 | Date | 2010/7/12 | Page    | 4/4 |

### Step 3

Click "Generate Tags" on the Toolbar, it will add all tags for you according to I-7012 specification.



The procedure is done. You could communicate with I-7012 via PDS-720.