

XP-8000-Atom Quick Start Guide

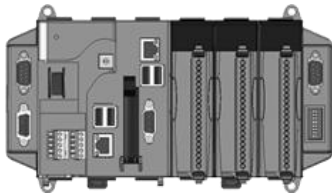
Version 1.0.1, May 2011

Congratulations!

Congratulations on purchasing XP-8000-Atom - the most popular automation solution for remote monitoring and control application. This Quick Start Guide will provide information needed to get started with XP-8000-Atom. Please also consult the User Manual for detailed information on the setup and use of XP-8000-Atom.

What's In the Box?

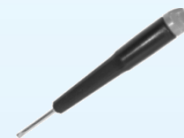
In addition to this guide, the package includes the following items:



XP-8000-Atom Module
XP-8041-AtomCE6/XP-8141-Atom
XP-8341-Atom/XP-8741-Atom



Software Utility CD



Screw Driver
1C016
2.4 mm

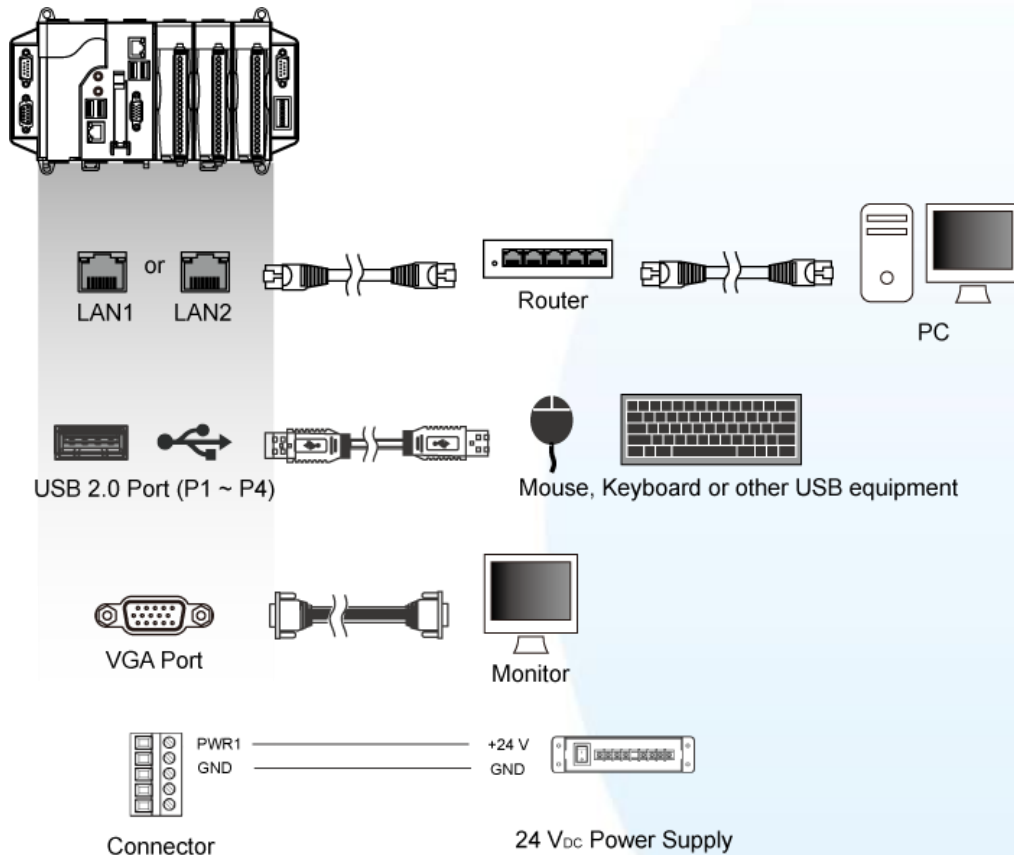
Preparing for Start-up Your XP-8000-Atom

- **Power Supply: +10 ~ +30 VDC (Ex: DP-665)**
http://www.icpdas.com/products/Accessories/power_supply/power_list.htm
- **Monitor: 800 x 600 ~ 1280 x 1024**
- **USB Mouse**
- **USB Keyboard**

1

Connecting to PC and Other Supported Devices

- i. Connect PC to the LAN port through a hub.
- ii. Connect the USB mouse and USB keyboard to the USB port.
- iii. Connect the monitor to the VGA port.
- iv. Connect the +24 V_{DC} power supply to PWR1 and GND terminals.



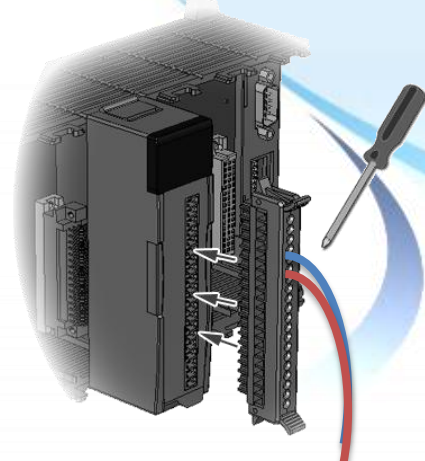
2

Inserting the I/O Modules

Only high profile I-8K and I-87K series modules can be plugged.

For more information about this expansion I/O modules, please refer to

http://www.icpdas.com/products/PAC/xpac/IO_Expansion.htm

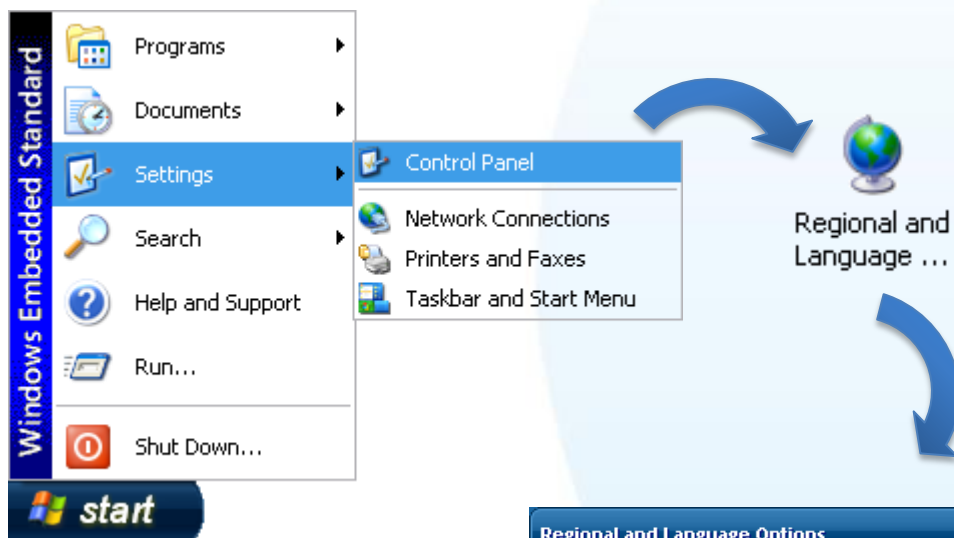


3

Localizing the User Interface

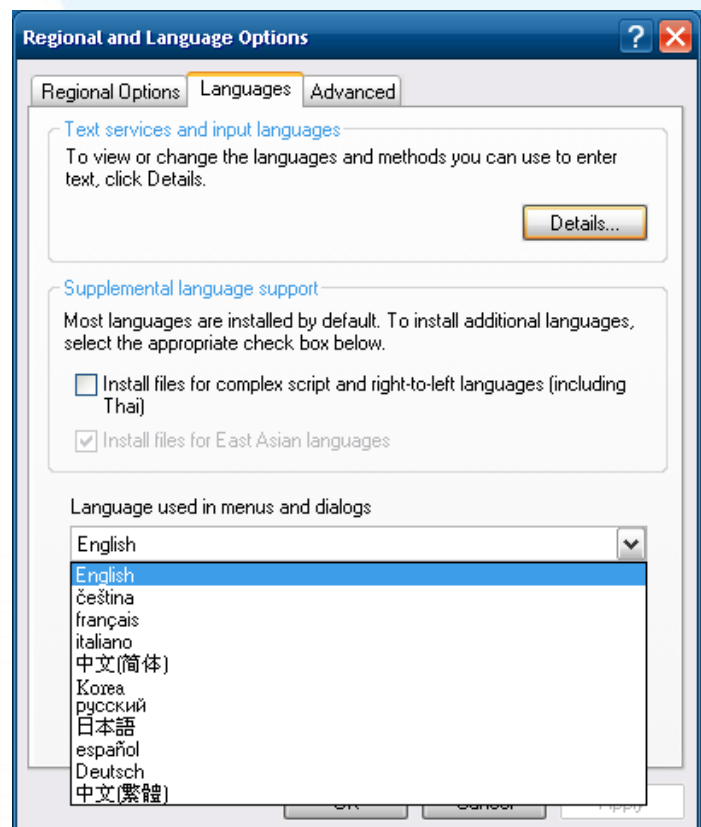
The "Regional and Language Options" is a Windows Embedded Standard functionality that allows users to easily change the XP-8000-Atom user interface with your native language.

Step 1 Click "Start" menu, point to "Settings", click "Control Panel", and then click "Regional and Language Options"



Step 2 Click "Language" tab, choose your local language from drop-down menu, and then click "OK" button

Step 3 Logoff and logon again to take effect (Password: empty)



4

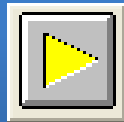
Using DCON Utility to Configure I-87K Modules

DCON Utility is a tool kit used to quickly control and manage I-87K series expansion I/O modules.



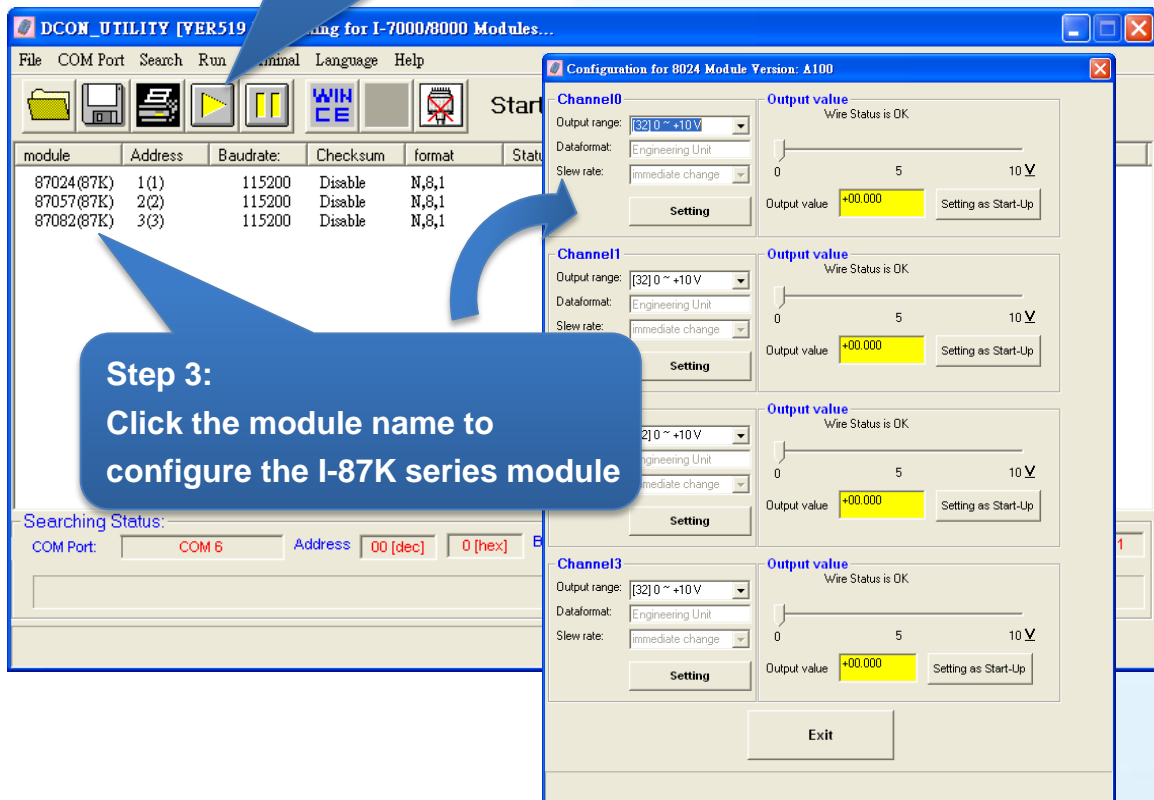
Step 1 Double-click “DCON Utility” located on desktop

Step 2 Click “Search” button



**Step 2:
Click Search Button**

**Step 3 Click the module name
to configure the I-87K
series module**



The screenshot shows the DCON Utility application window. On the left, there is a table with the following data:

module	Address	Baudrate	Checksum	format	Status
87024(87K)	1(1)	115200	Disable	N,8,1	
87057(87K)	2(2)	115200	Disable	N,8,1	
87082(87K)	3(3)	115200	Disable	N,8,1	

On the right, the 'Configuration for 8024 Module Version: A100' dialog box is open, showing settings for Channel 10, Channel 11, and Channel 13. Each channel has an 'Output value' field set to '+00.0000' and a 'Setting as Start-Up' button. The 'Search' button in the main window is highlighted with a blue arrow pointing to it.

**Step 3:
Click the module name
to configure the I-87K series module**

5

Installing Application and Saving System Settings Modified Note

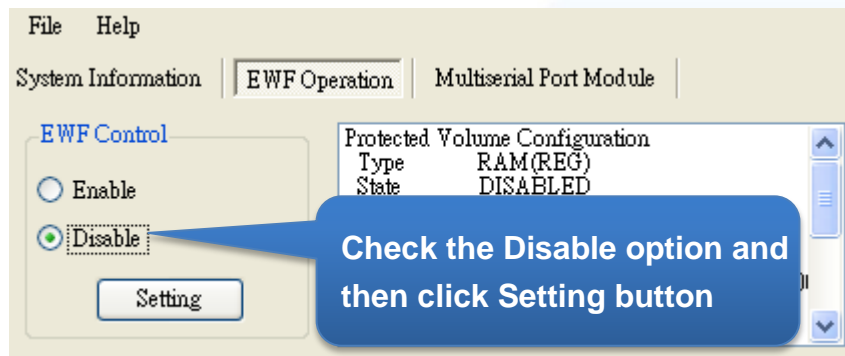
The EWF is a safety mechanism on XP-8000-Atom for protecting the system from virus infection and harsh environments. Before installing application or modifying system settings, EWF needs to be disabled; after the operation completed, EWF needs to be enabled. When EWF is enabled, the modification on C disk will be invalid at the next reboot.

Step 1 Disable EWF:

- i. Double-Click XPAC Utility located on desktop



- ii. Click EWF operation tab, Check Disable option and click Setting button



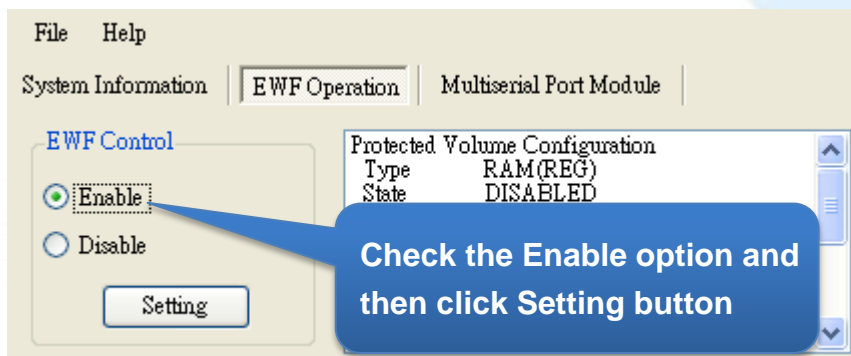
- iii. Click OK button on pop-up message box, then reboot the XP-8000-Atom

Step 2 Install the application or modify the system settings

Step 3 Enable EWF:

- i. Double-Click XPAC Utility located on desktop

- ii. Click EWF operation tab, Check Enable option and click Setting button



- iii. Click OK button on pop-up message box, then reboot the XP-8000-Atom

6

Recovering your XP-8000-Atom

Before recovering the OS, please make sure your data is well backed up.

Step 1 Plug the “Rescue” marked CF card in CF slot on XP-8000-Atom

Step 2 Reboot the XP-8000-Atom and go to the BIOS by pressing “Delete” key

Step 3 Select “Boot” menu, and then select “Hard Disk Drives” and then press “Enter” key

BIOS Setup Utility						
Main	Advanced	PCIPnP	Boot	Security	Chipset	Exit
▶ Boot Settings						Specifies the Boot Device Priority sequence from available Hard drives
▶ Boot Settings Configuration						
▶ Hard Disk Drives						

Step 4 Select “1st Drive” and press “Enter” key

Step 5 Set “1st Drive” as “PS-XXX”, it specifies the XP-8000-Atom to boot form CF card

BIOS Setup Utility						
Main	Advanced	PCIPnP	Boot	Security	Chipset	Exit
Hard Disk Drivers						Specifies the Boot sequence from available drives
1st Drive			[SATA: PS-XXX]			
2nd Drive			[SATA: PM-XXX]			

Step 6 Press “F10” to save and select “OK” to exit setup utility

Step 7 After restarting, the system will enter the XP-8000-Atom Rescue Utility, and then enter (1) Recover XP-8000-Atom to factory default

```

*****
*      XP-8000-Atom Rescue Disk -- Main Menu      *
*****

Choose one of the followings:

(1) Recover XP-8000-Atom to factory default
(2) Upgrade XP-8000-Atom manually
(3) Display Drive [C]
(4) Quit rescue disk and reboot
(5) Command shell

Enter choice: 1

```

Step 8 Wait a while until we enter the XP-8000-Atom Rescue Utility again, and then enter (4) Quick rescue disk and reboot

Step 9 Repeat step 2 ~ 6 to set “1st Drive” as “PM-XXX”

BIOS Setup Utility						
Main	Advanced	PCIPnP	Boot	Security	Chipset	Exit
Hard Disk Drivers					Specifies the Boot sequence from available drives	
1st Drive				[SATA: PM-XXX]		
2nd Drive				[SATA: PS-XXX]		

Step 10 After rebooting the XPAC-8000-Atom, the system takes about 8 minutes to set up

Step 11 The XP-8000-Atom has been recovered

Technical Support

After you have finished configuring your module(s), you may start to develop your own applications. For detailed instructions and more applications, please refer to the following information list:

- **XP-8000-Atom User Manual**

CD:\XPAC-Atom\Document\user_manual\

ftp://ftp.icpdas.com/pub/cd/xpac-atom/document/user_manual/

- **XPacSDK API**

CD:\XPAC-Atom\SDK\

<ftp://ftp.icpdas.com/pub/cd/xpac-atom/sdk/>

- **XPacSDK API Documents**

CD:\XPAC-Atom\Document\sdk\xpacsdk

<ftp://ftp.icpdas.com/pub/cd/xpac-atom/document/sdk/>

- **DCON Utility User Manual**

CD:\XPAC-Atom\Tools\DCON_Utility\Manual

ftp://ftp.icpdas.com/pub/cd/xpac-atom/tools/dcon_utility/manual/

- **XP-8000-Atom Website**

http://www.icpdas.com.tw/product/solutions/pac/xpac-atom/xp_8000_atom.html

- **ICP DAS Service Email Account**

service@icpdas.com