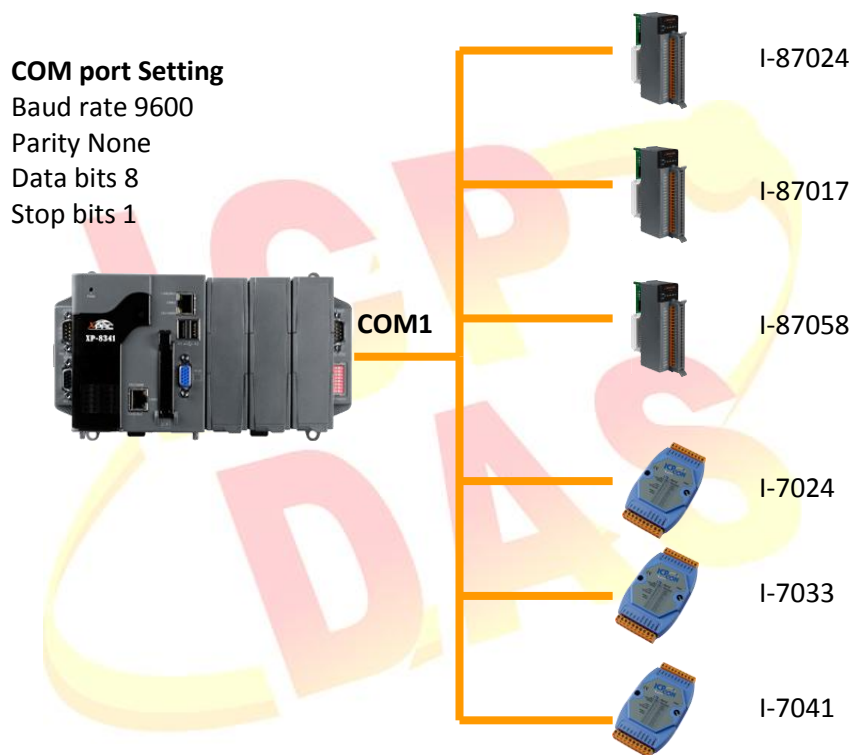


Classification	NAPOPC_CE6 FAQ				No.	1-001-E	
Author	James	Version	1.0.0	Date	2010/7/12	Page	1/3

How to optimize communication performance in NAPOPC_CE6?

Applies to:

<i>Platform</i>	<i>OS version</i>	<i>NAPOPC version</i>
XP-8000-CE6	CE6	NAPOPC_CE6 v1.00

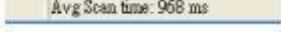


Here is an assumed architecture:

We connect to I-87024/I-87017/I-87058/I-7024/I-7033/I-7041 via COM1 of XP-8000-CE6. Search all modules via COM1, and then we could get these modules in NAPOPC_CE6 Server.

<ul style="list-style-type: none"> + 87024 + 87017 + 87058 + 7033 + 7041 - 7024 - AOs 	<table border="1"> <thead> <tr> <th>Name</th> <th>Type</th> </tr> </thead> <tbody> <tr> <td>Ch00</td> <td>Analog Output</td> </tr> <tr> <td>Ch01</td> <td>Analog Output</td> </tr> <tr> <td>Ch02</td> <td>Analog Output</td> </tr> <tr> <td>Ch03</td> <td>Analog Output</td> </tr> </tbody> </table>	Name	Type	Ch00	Analog Output	Ch01	Analog Output	Ch02	Analog Output	Ch03	Analog Output
Name	Type										
Ch00	Analog Output										
Ch01	Analog Output										
Ch02	Analog Output										
Ch03	Analog Output										

Classification	NAPOPC_CE6 FAQ				No.	1-001-E	
Author	James	Version	1.0.0	Date	2010/7/12	Page	2/3

Click any one module, and we could see **“Average Scan Time”**  on the status bar of NAPOPC_CE6 window. Now Average Scan Time we get is 968 ms.

	COM1					
Module	I-87024	I-87017	I-87058	I-7033	I-7041	I-7024
Avg Scan Time	968ms					

So far the Access-Interval of each module is 968 ms.

If we intend to set the Access-Interval as below:

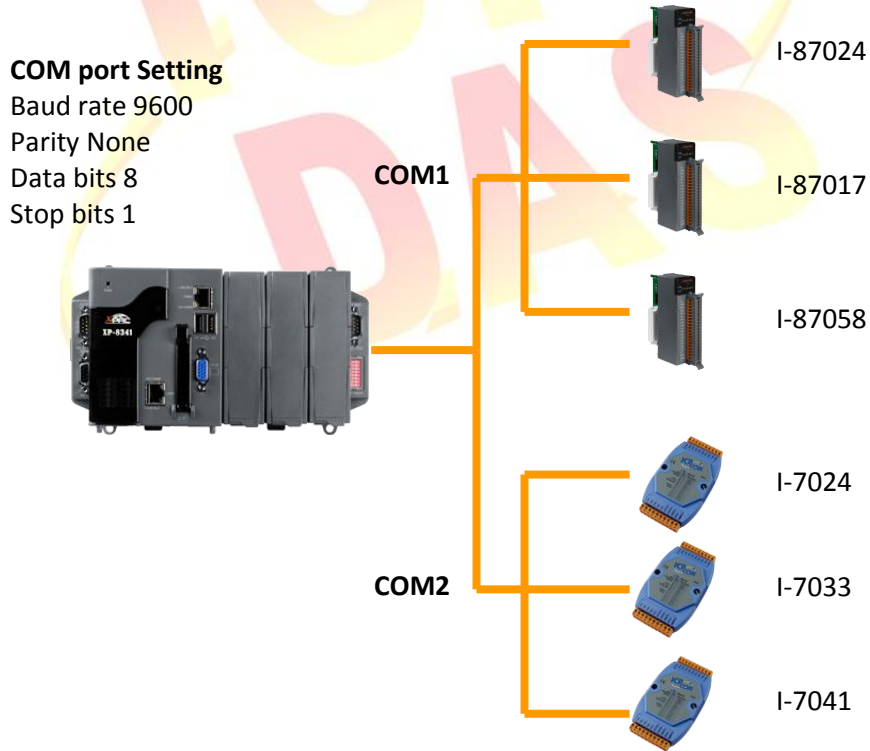
I-87024/I-7024: 1 Second

I-87058/I-7041: 3 Second

I-87017/I-7033: 100ms

We could operate as following steps:

1. Divide these modules into two different COM ports. Connect I-87024/I-87017/I-87058 to COM1, and connect I-7024/I-7033/I-7041 to COM2.



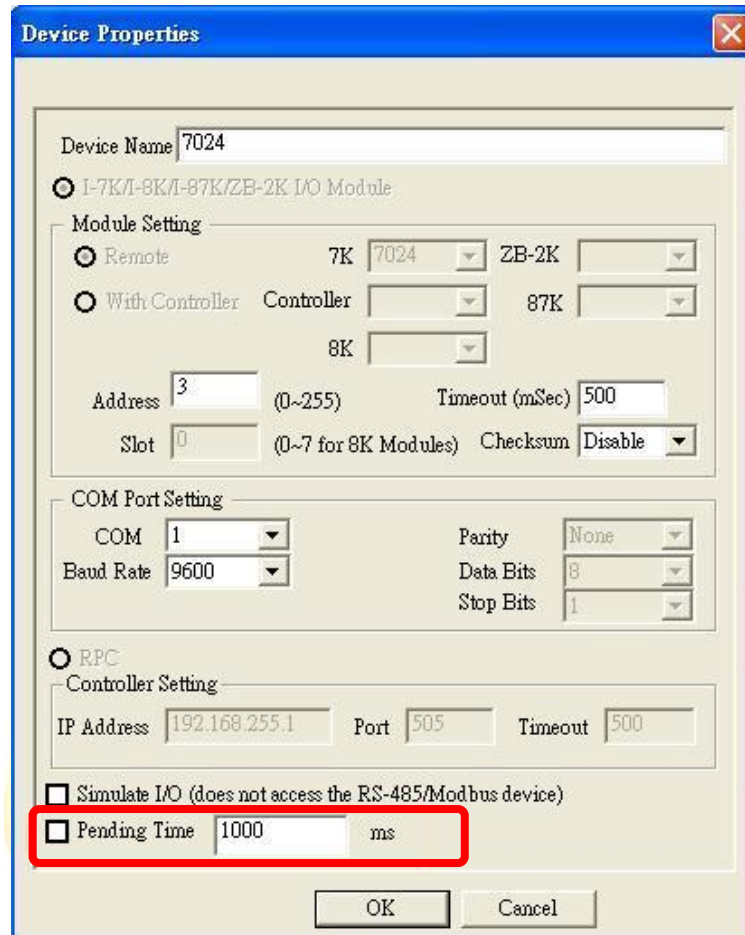
2. Search modules via COM1/COM2 again, and then check **“Average Scan Time”**.

We will find **“Average Scan time”** has been getting faster:

Classification	NAPOPC_CE6 FAQ				No.	1-001-E	
Author	James	Version	1.0.0	Date	2010/7/12	Page	3/3

	COM1			COM2		
Module	I-87024	I-87017	I-87058	I-7033	I-7041	I-7024
Avg Scan Time	391 ms			516 ms		

3. We could adjust “Pending Time” to enhance the performance of communication further. Enter the Controller Setting table to look for the “Pending Time” option.



According to our requirement, change the “Pending Time” as following

	I-7033	I-7041	I-7024
Pending Time	—	2000	800

	I-87024	I-87017	I-87058
Pending Time	800	—	2000

After we accomplish it, we could get better “Average Scan Time” as 62ms and 31ms.

Finally, we have improved Access-Interval and set different intervals for different modules.

	COM 1			COM2		
Module	I-87024	I-87017	I-87058	I-7033	I-7041	I-7024
Avg Scan Time	62 ms			31 ms		