

Upgrade XPAC 's ISaGRAF Driver to Newer Version

Note:

If you have purchased XP-8xx7-CE6, the ISaGRAF Driver is already installed with license when shipping out. You don't need to install it. However if you want to upgrade to newer version, you may upgrade it by yourself.

The XPAC ISaGRAF driver can be obtained in the XP-8xx7-CE6 CD-ROM:

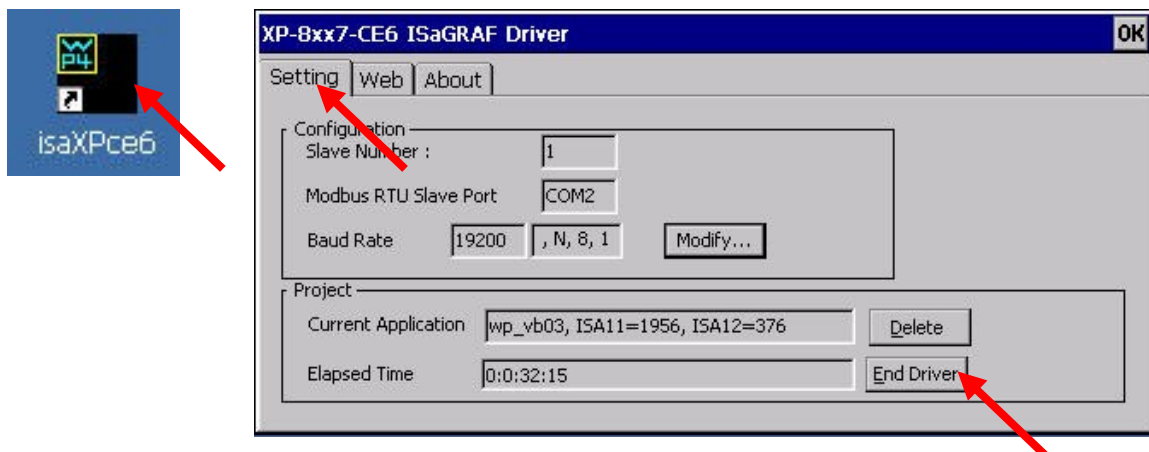
[\napdos\isagraf\xp-8xx7-ce6\driver\<<version Number>](#)

EX: version 1.18 is located at [\napdos\isagraf\ xp-8xx7-ce6\driver\1.18\](#)

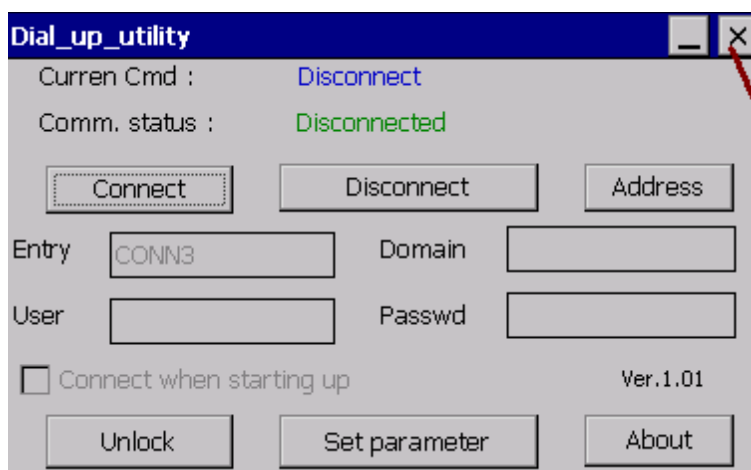
Or download it from

<http://www.icpdas.com/products/PAC/i-8000/isagraf.htm> > Driver

1. If your XPAC is XP-8xx7-CE6/XP-8xx6-CE6, please run "isaXPce6", click on "End Driver" to stop ISaGRAF Driver first. And if the "Dial_up_utility" is running, please also close it by click its "X" on the top-right corner. However if it is XP-8xx1-CE6 / 8xx9-CE6 (XPAC without ISaGRAF license), please goto step 2.

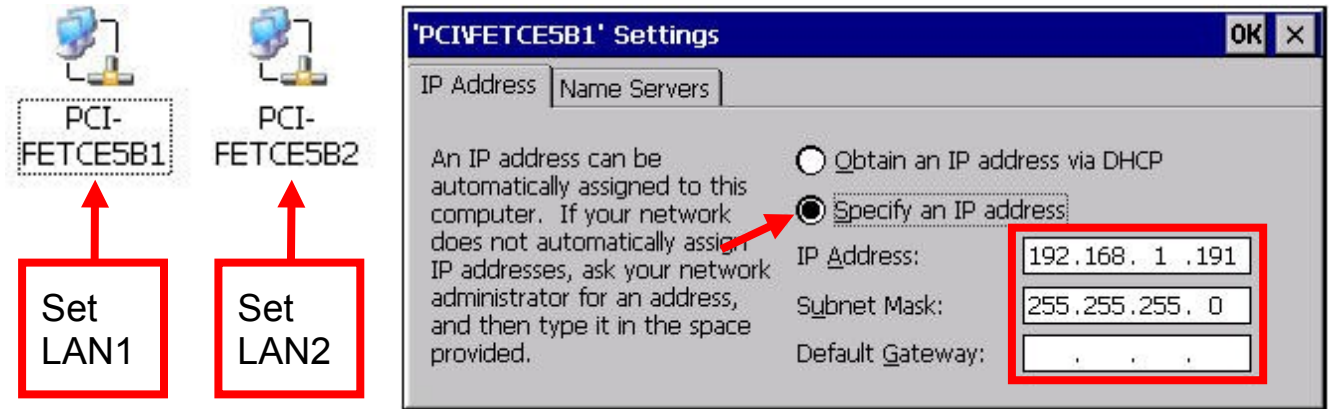


If the "Dial_up_utility" is running, close it by click its "X" on the top-right corner.

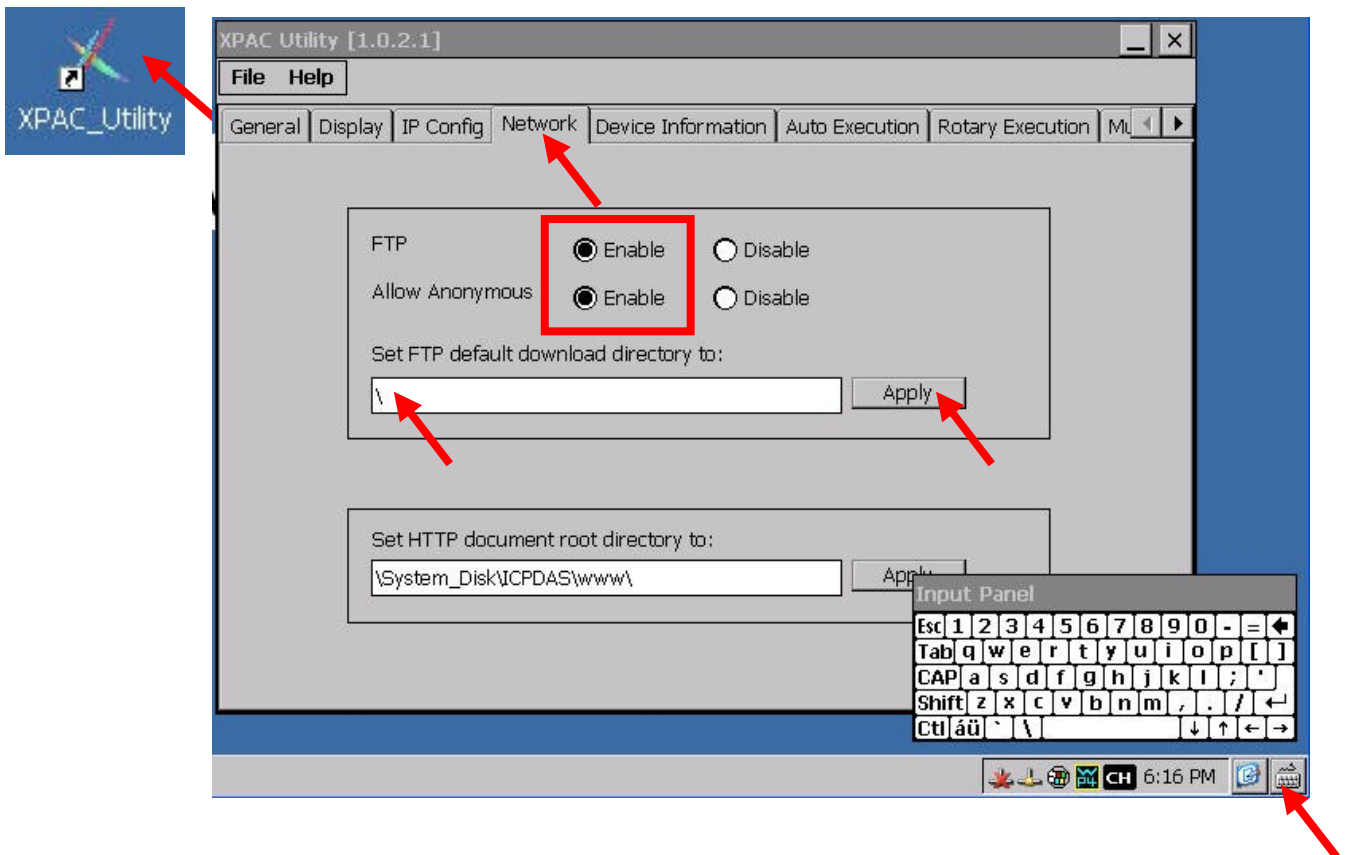


2. Set up XPAC 's IP, Mask, FTP directory & Auto-execute

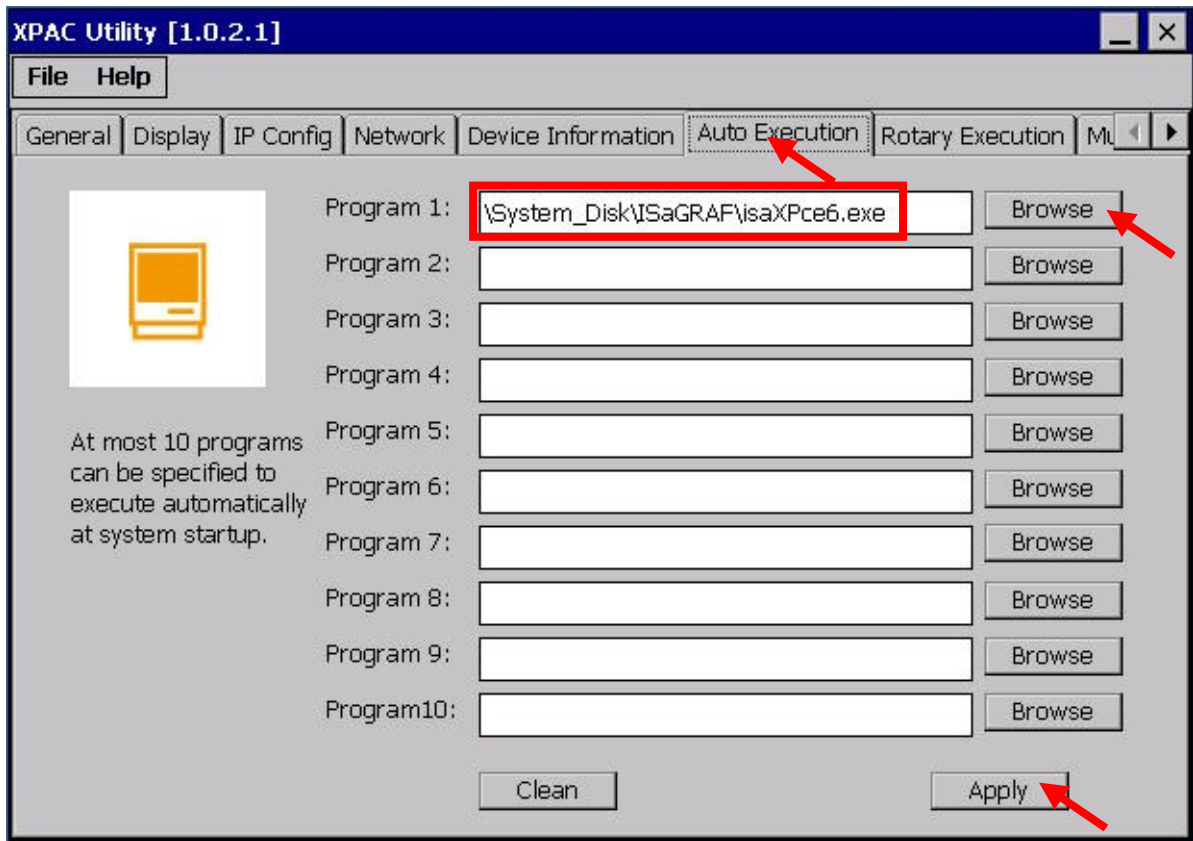
- A. Create a folder "isagraf" inside "\System_Disk" folder in your XPAC. Then it will be \System_Disk\isagraf
- B. Run [Start] > [Setting] > [Control Panel] on the XPAC, then double click on "Network and Dial-up Connections". Then set your XPAC's IP address & Subnet Mask of "LAN1" and "LAN2". (Please always set IP as Fixed IP for ISaGRAF application, No DHCP)



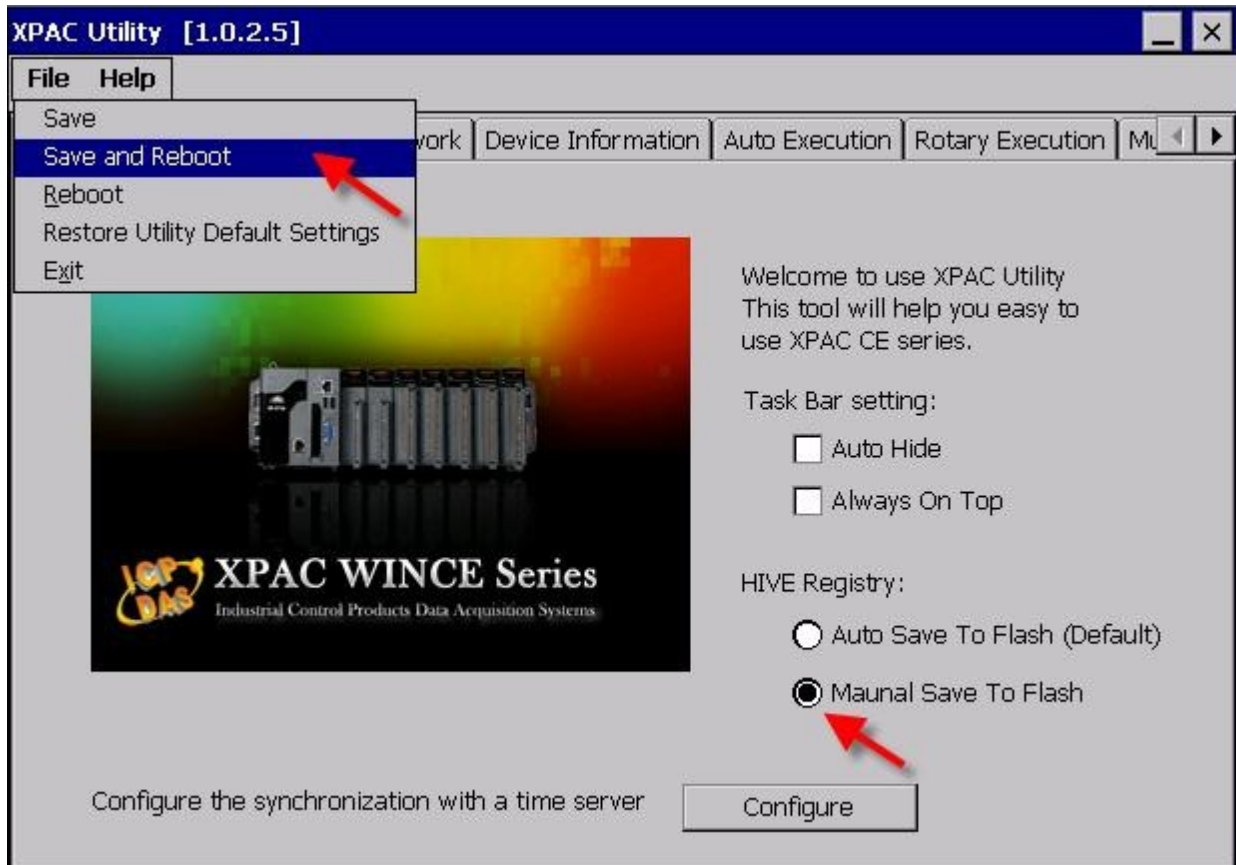
- C. Please run [Start] > [Programs] > [XPAC Utility] > [Network]. Set FTP directory to the root directory "\". Check all Network options as "Enable". Then click on "Apply". If the Input Panel is needed, click on the "SipPanel" icon on the bottom-right corner.



D. Click “Auto Execution”, “Browse” to select or type “\System_Disk\isagraf\isaXPce6.exe”, then click on “Apply”.



E. Click “General” and check the “Manual Save To Flash” first and then run the File > Save and Reboot to save all setting.



3. Download the files from PC to XPAC directory “\System_Disk\isagraf” :

isaXPce6.exe, rs_wphmi.exe , PLC_MODE_XP_8xx7_CE6.exe
mscorlib.dll, QuickerNet.dll, Quicker.dll, login.dll, main.dll, whmi_filter.dll
ETHAPI.dll , isa_el.dll , SharedMemoryCE6.dll , isaXPce6.lnk
Soft-GRAF.exe, i8092.dll, I8094.dll, i8092_dll.dll, i8094_dll.dll
i8092f_XP8KCE_20100208.CAB, i8094f_XP8KCE_20100208.CAB
SQL_Client_PAC.exe , dbnetlib.dll , i8123W.dll , i8120.dll
System.Data.SqlClient.dll , System.Data.SqlServerCe.dll
dial_utility.exe , dial_up.dll , dial_up_net.dll , ICPDAS GTM-201-RS232_COM5_xpac_ce6_v1.00.cab , icpdas_i-821xw_MSA1_v1.00.cab ,
“sofgrafy” sub-directory
(and “license.bin” if your XPAC is XP-8xx1-CE6 / XP-8xx9-CE6)

Note: If the ISaGRAF driver is still running, the files copied are failed even your eyes tell you it is successful. So, you must do the step 1 “End Driver” . And if the “Dial_up_utility” is running, please also close it.

You may use PC's ftp utility to download these files.

Please open Internet browser and then type in <ftp://<IP address>>,
for ex. [Ftp://192.168.1.178](ftp://192.168.1.178) , browse it to the \System_Disk\isagraf .
Then copy all of them & past it.

Then remember to re-start your XPAC's power again. After it re-boot again, it will have the new ISaGRAF driver running. You can check if the version is correct.

