

---

## Chapter 3: Setting Up A Web HMI Demo

---

The XP-8xx7-CE6 is the abbreviation of the XP-8047-CE / XP-8347-CE6 / XP-8747-CE6 .  
The XP-8xx6-CE6 is the abbreviation of the XP-8046-CE / XP-8346-CE6 / XP-8746-CE6 .

### Important:

1. The XP-8xx7-CE6 / XP-8xx6-CE6 supports only High profile I-8K and I-87K I/O cards in its slot 1 to 7 (The leftmost I/O slot number is 1). Refer to the XP-8xx7-CE6 CD: \napdos\isagraf\xp-8xx7-ce6\english-manu\ "xp-8xx7-ce6-datasheet.pdf"

2. Please always set a **fixed IP** address to the XP-8xx7. (No DHCP)  
Recommend to use the NS-205 / NS-208 Industrial Switch for XP-8xx7-CE / XP-8xx6-CE6.

3 The leftmost I/O slot number of the XP-8xx7-CE6 / XP-8xx6-CE6 is 1.

### 3.1: Web Demo List

---

The Web page location:

XP-8xx7-CE6 CD-ROM: \napdos\isagraf\xp-8xx7-ce6\xpce6-webhmi-demo\

The respective ISaGRAF project location:

XP-8xx7-CE6 CD-ROM: \napdos\isagraf\xp-8xx7-ce6\demo\

Demo list:

Name	Description	IO board
sample	A Web HMI sample	No I/O board
example1	A simple example listed in Chapter 4	slot 1: I-87055W
xphmi_01	Display controller's date & time	No I/O board
xphmi_02	DI & DO demo	slot 1: I-87055W
xphmi_03	Read / Write Long, float & Timer value	No I/O board
xphmi_04	Read / Write controller's String	No I/O board
xphmi_05	Multi-Pages demo Page menu is on the Left	slot 1: I-87055W
xphmi_05a	Multi-Pages demo Page menu is on the Top	slot 1: I-87055W
xphmi_06	AIO demo, scaling is in ISaGRAF	slot 2: I-87024W slot 3: I-8017HW
xphmi_07	AIO demo, scaling is in PC	slot 2: I-87024W slot 3: I-8017HW
xphmi_08	download controller's file to PC	slot 1: I-87055W
xphmi_09	pop up an alarm window on PC	slot 1: I-87055W
xphmi_11	Trend curve.	slot 2: I-87024W slot 3: I-8017hW
xphmi_12	Record 1 to 8 Ch. i8017HW 's volt every 50ms and draw trend curve by M.S.Excel	slot 3: I-8017hW slot 2: I-8024W
xphmi_13	Record 1 to 4-Ch. i8017HW's voltage every 10ms and draw trend curve by M.S.Excel	slot 3: I-8017hW slot 2: I-8024W

## 3.2: Steps To Set Up A Web HMI Demo

### 3.2.1: Step 1 - Setup The Hardware

A. Please have one XP-8347-CE6 or XP-8747-CE6 and plug one I-87055W in its slot 1.

If you don't have the I-87055W (8 IN & 8 OUT board), please follow the same steps as below however your Web HMI demo may be replaced to "xphmi\_01" not "xphmi\_05"

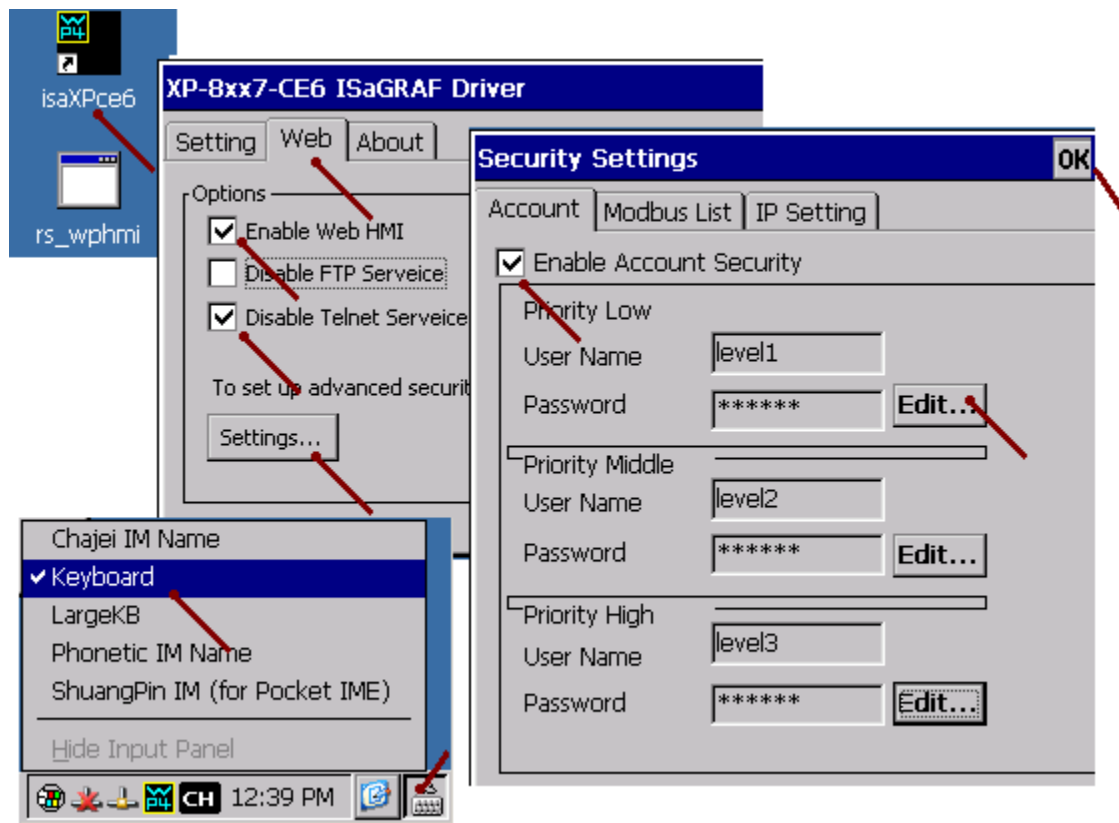
B. Prepare one VGA monitor, one USB mouse and one ethernet cable and then connect them to the XP-8xx7-CE6. (Keyboard is using the software keyboard on the bottom-right of the VGA screen)

C. Power the XP-8xx7-CE6 up.

### 3.2.2: Step 2 - Setting The Web Options

A. Please refer to the Appendix A.3 of the XP-8xx7-CE6 getting started manual to set a **fixed IP** address to the XP-8xx7-CE6. (No DHCP)

B. Check on "Enable Web HMI" and then click on "Setting", Please check the "Enable Account Security" and then click on "Edit" to set (username , password). **Then remember to click on "OK"**



**Note:** If "Enable Account Security" is not checked, any user can easily get access to your XP-8xx7-CE6 through the Internet Explorer.

### 3.2.3: Step 3 - Download ISaGRAF Project

Please download ISaGRAF project "xphmi\_05" to the XP-8XX7-CE6. This project is in the XP-8xx7-CE6 CD-ROM:\napdos\isagrafxp-8xx7-ce6\demo\ "xphmi\_05.pia"

xphmi\_05 demo need one I-87055W.If you don't have the I-87055W (8 IN & 8 OUT board), you may download "xphmi\_01" (CD-ROM:\napdos\isagrafxp-8xx7-ce6\demo)

If you know how to restore "xphmi\_05.pia" to your ISaGRAF Workbench and download it to the controller, please go ahead to the section 3.2.4.

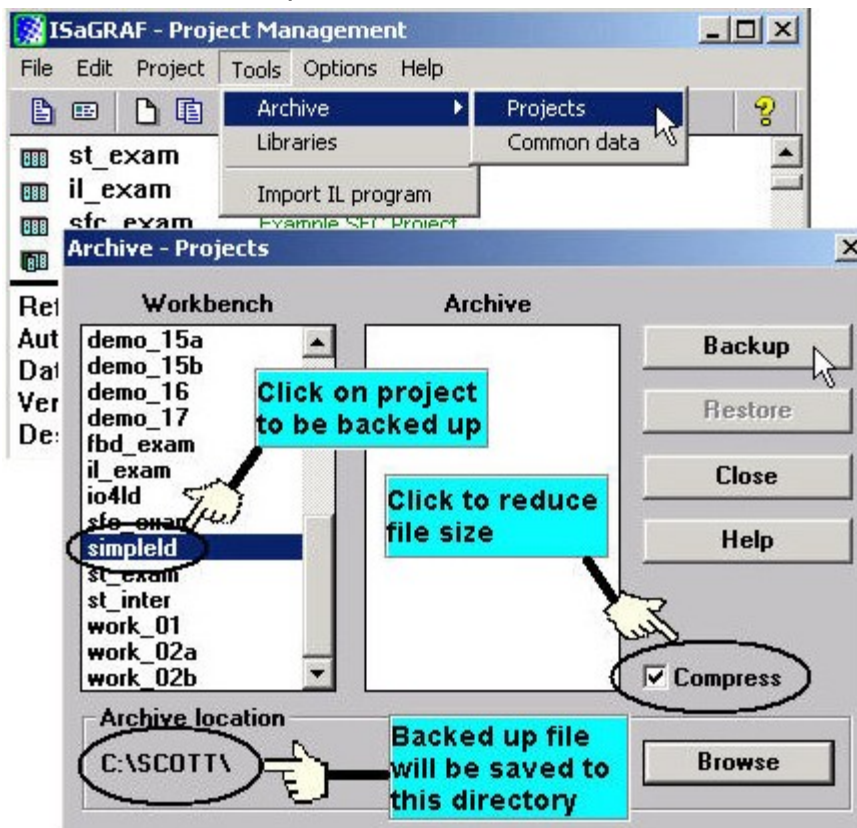
However if you don't know it, please refer to the below steps. Please make sure the ISaGRAF Workbench is already installed to your PC. (refer to the section 2.1 & 2.2)

#### Steps To Backing Up & Restoring An ISaGRAF Project:

For archiving purposes you can "Back Up" and "Restore" an ISaGRAF project. For example, you may want someone to test your program or email to [service@icpdas.com](mailto:service@icpdas.com) for ICP DAS's ISaGRAF technical service.

#### Backing Up An ISaGRAF Project

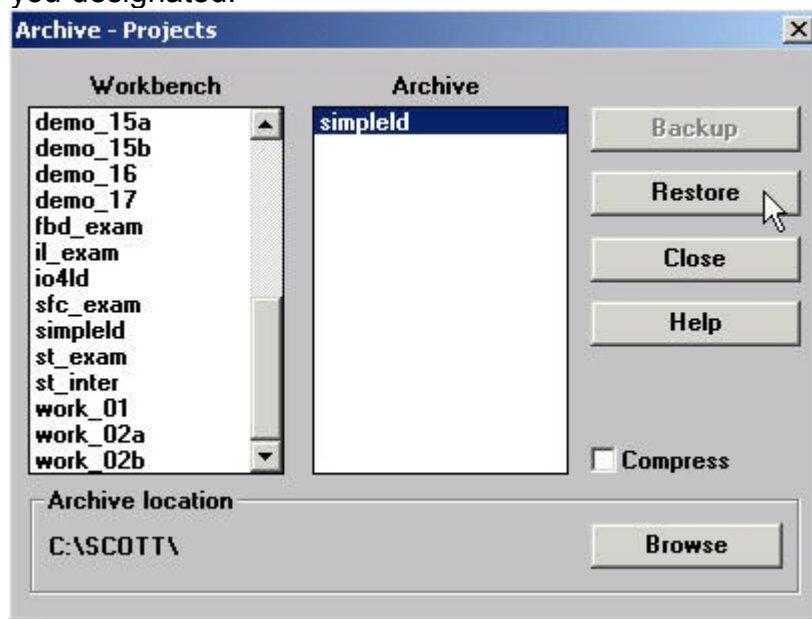
Open the "ISaGRAF Project Management" , select "Tools" from the menu bar, click on "Archive", and then click on "Projects". An "Archive Projects" window will open which allows you to designate where you want to save the ISaGRAF project to. Click on the name of the ISaGRAF project you want to backup, and then click on the "Backup" button. You can compress the size of the file you have backed up by clicking on the "Compress" checkbox BEFORE you click on the "Backup" button.



Then you will now find the backed up ISaGRAF project file in the "Archive" location you have designated. In the example above, the name of the backed up file is "simpleld.pia".

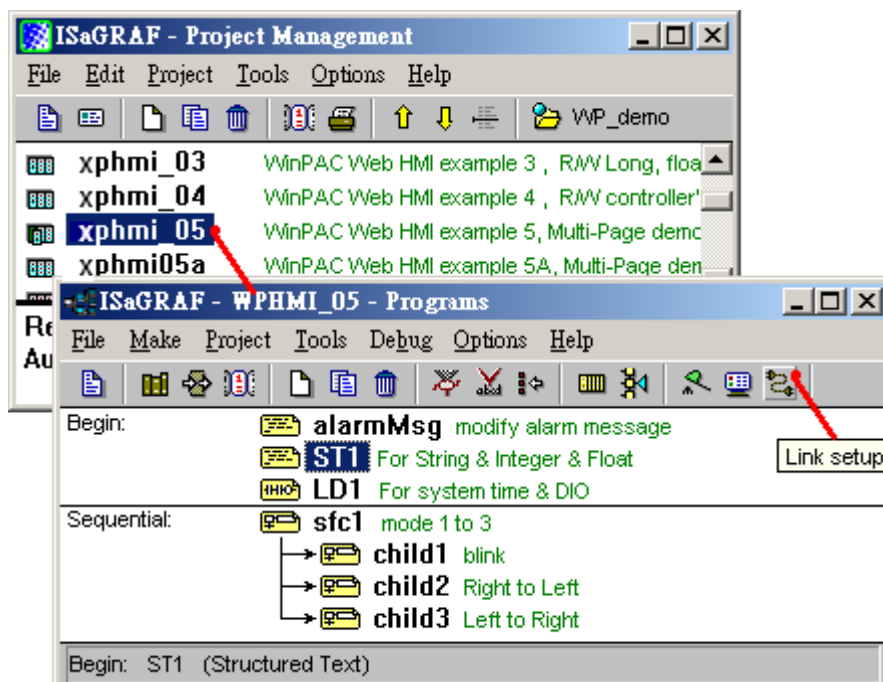
### Restoring An ISaGRAF Project

To restore an ISaGRAF project from a backed up file (\*.pia), use the same method as above to access the "Archive Projects" window, click on the name of the project you want to restore from the "Workbench" window, then click on the name of the backed up file from the "Archive" window, then click on the "Restore" button. The ISaGRAF project will now be restored to the sub-directory you designated.

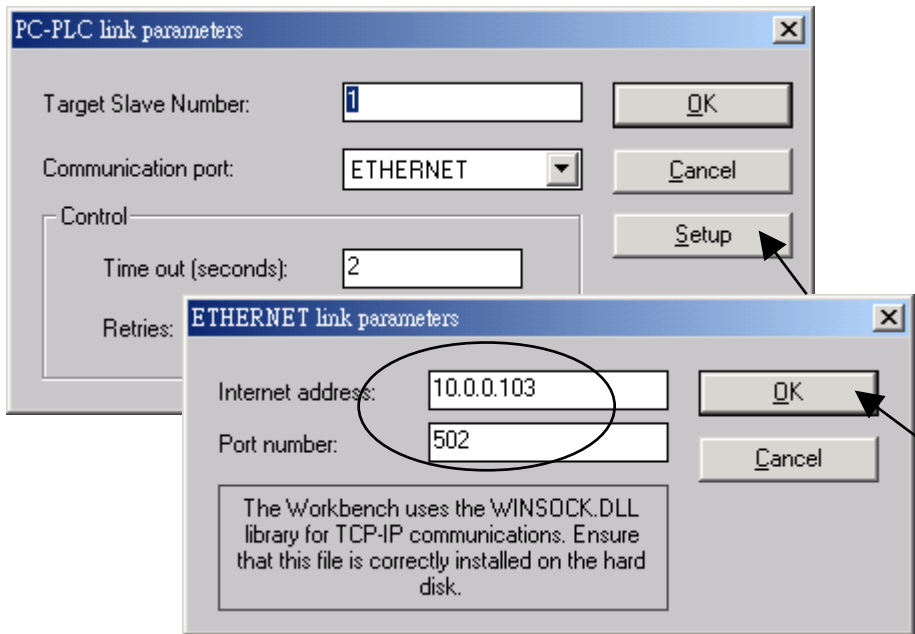


#### 3.2.3.1: Steps To Download a ISaGRAF Project To The Controller:

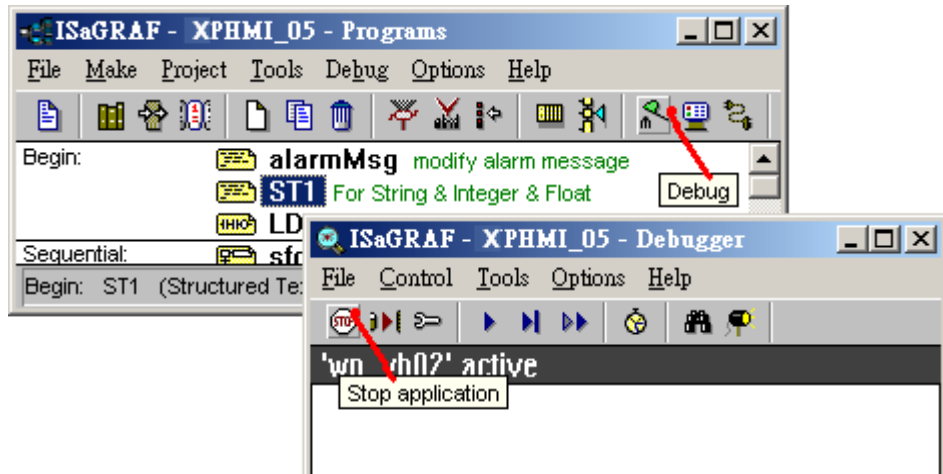
Double click on the "xphmi\_05" to get into the project. Then click on "Link setup" .



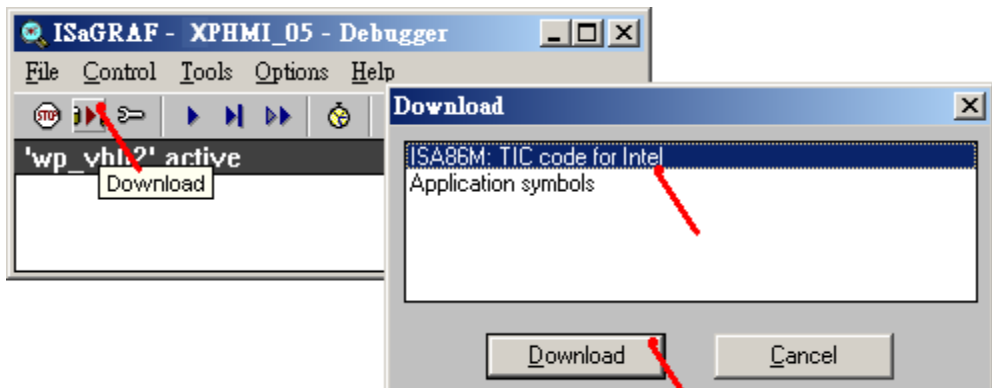
Click on “Setup” first and then entering the IP address of your controller. The port number should be 502.



To download “xphmi\_05” project to the XP-8xx7-CE6, Click on “Debug” . If communication is established, click on “stop” first to stop the old project running in the XP-8xx7-CE6.



Then click on “Download” to download it to the controller.



### 3.2.4: Step 4 - Download Web Pages To The Wincon

A. Please copy all files in the CD-ROM:

XP-8xx7-CE6 CD: \napdos\isagraf\xp-8xx7-CE6\xpce6-webhmi-demo\xphmi\_05\ \*.\*  
to the XP-8Xx7-CE6 's \System\_Disk\Temp\HTTP\WebHMI\

xphmi\_05 demo need one I-87055W in its slot 1. If you don't have the I-87055W (8 IN & 8 OUT board), you may download "xphmi\_01"

B. Since the Web Pages are modified or new copied, please run "rs\_wphmi.exe" to reset the Web server. **The "rs\_wphmi.exe" must be run every time when user has modified any file in the XP-8xx7-CE6 's \System\_Disk\Temp\HTTP\WebHMI\**



### 3.2.5: Step 5 - Show Time

Please run Internet Explorer (Rev. 6.0 or higher) on PC , key in the IP address of your XP-8xx7-CE6. For example: 61.218.42.10 or <http://61.218.42.10>

#### Note:

The XP-8xx7-CE6 (with professional OS) supports Web HMI on its own Internet Explorer. You may run Internet Explorer on the XP-8xx7-CE6 's VGA and then key-in local host IP address 127.0.0.1 or <http://127.0.0.1>

