

Classification	Update software FAQ on XPAC				No.	4-01-02	
Author	Weikai	Version	1.0.2	Date	2013/12/26	Page	1/16

How to update the OS image for the XP-8000-Atom-CE6

Applied to:

Platform	OS version	XPAC utility version
XP-8000-Atom-CE6	All versions (WinCE6)	All versions
XP-8000-CE6	N/A	N/A

N/A: Not applicable to this platform and OS.

XP-8000-Atom-CE6 update is part of the XP-8000-Atom-CE6 services for providing additional and more efficient features and functionality for the XP-8000-Atom-CE6 operating system.

There are two ways to update the XP-8000-Atom-CE6:

i. Only update the OS image and the necessary files

Each release will contain new features improved, reliability and application compatibility, enhanced security, and more. Before downloading any release files, we highly recommend that you read the release notes, which contains all the details of this release.

Please refer to the documents at ftp://ftp.icpdas.com/pub/cd/xpac-atom-ce6/os_image/ for more details.

ii. Reinstalling the XP-8000-Atom-CE6

If you don't wish to update the OS image, you can install a new version of the XP-8000-Atom-CE6 OS on simply your device. In addition to updating the OS image, the System_disk will also be updated.

The XP-8000-Atom-CE6 can be reinstalled using the XP-8000-Atom-CE6 Rescue Utility. Before reinstalling the XP-8000-Atom-CE6, make sure the necessary update files are available on your CF card.

The necessary files can be obtained from:

<ftp://ftp.icpdas.com/pub/cd/xpac-atom-ce6/rescue/>

Caution:

Classification	Update software FAQ on XPAC				No.	4-01-02	
Author	Weikai	Version	1.0.2	Date	2013/12/26	Page	2/16

1. Before installing the XP-8000-Atom-CE6, please check that you have backed up your data.
2. Ensure that your XP-8000-Atom-CE6 is running in normal mode (i.e., the rotary switch is in position 0) when installing the XP-8000-Atom-CE6.
3. If you intend to update your OS to version 1.0.0.1 or later, you must check that your BIOS is compatible version as BIOS version R1.00.E1 or later is required. You can determine the BIOS version by checking the details displayed on the boot screen the initial during initial boot sequence up, as described on page 12, and you can refer to page 13 for details of how to update the BIOS.

Only updating the OS image and necessary files

To update the OS image only, please follow the steps below

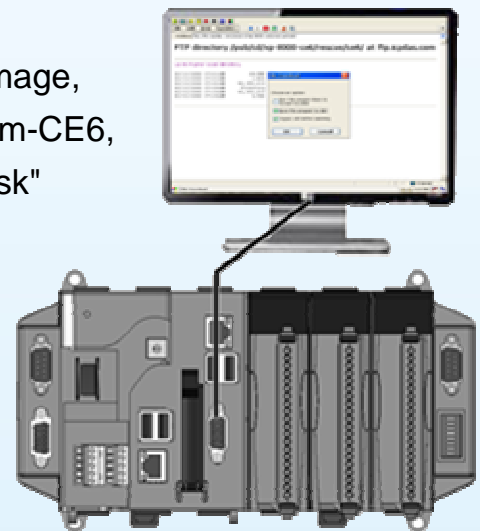
Step 1 Download the latest version of the XP-8000-Atom-CE6 OS image, NK.bin, which can be obtained from the ICP DAS web site at:

<ftp://ftp.icpdas.com/pub/cd/xpac-atom-ce6/rescue/ce6/nk.bin>

Step 2 Replace the older XP-8000-Atom-CE6 OS image, which is pre-installed on the XP-8000-Atom-CE6, located and should be in the "\System_Disk" folder.

Step 3 Replace all files located in the "\System_Disk\icpdas" folder on the XP-8000-Atom-CE6 device with all files from ftp://ftp.icpdas.com/pub/cd/xpac-atom-ce6/system_disk/icpdas/

Step 4 After replacing the image and Rebooting the device, the XP-8000-Atom-CE6 OS image will have been updated completely



Classification	Update software FAQ on XPAC				No.	4-01-02	
Author	Weikai	Version	1.0.2	Date	2013/12/26	Page	3/16

Reinstalling XP-8000-Atom-CE6

Warning:

- The XP-8000-Atom-CE6 showed on **normal mode**, which means that the **rotary switch showed be in position 0**, before restoring the XP-8000-Atom-CE6 to factory default setting.
- When reinstalling the XP-8000-Atom-CE6, it will not only clear the built-in flash (System_Disk), but also restore all files in the System_Disk folder.
- Before reinstalling the XP-8000-Atom-CE6, please check you have backed up your data.

Requirement for reinstalling the XP-8000-Atom-CE6

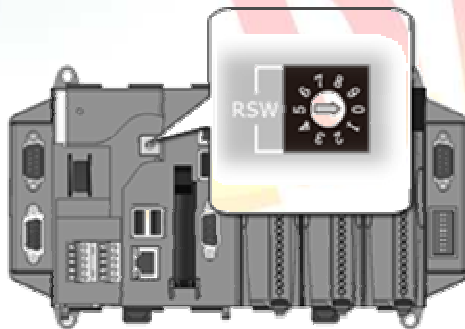
Step 1: Download all update files from:

<ftp://ftp.icpdas.com/pub/cd/xpac-atom-ce6/rescue/>

Step 2: Copy the files that were download Step 1 to the root directory of the CF card

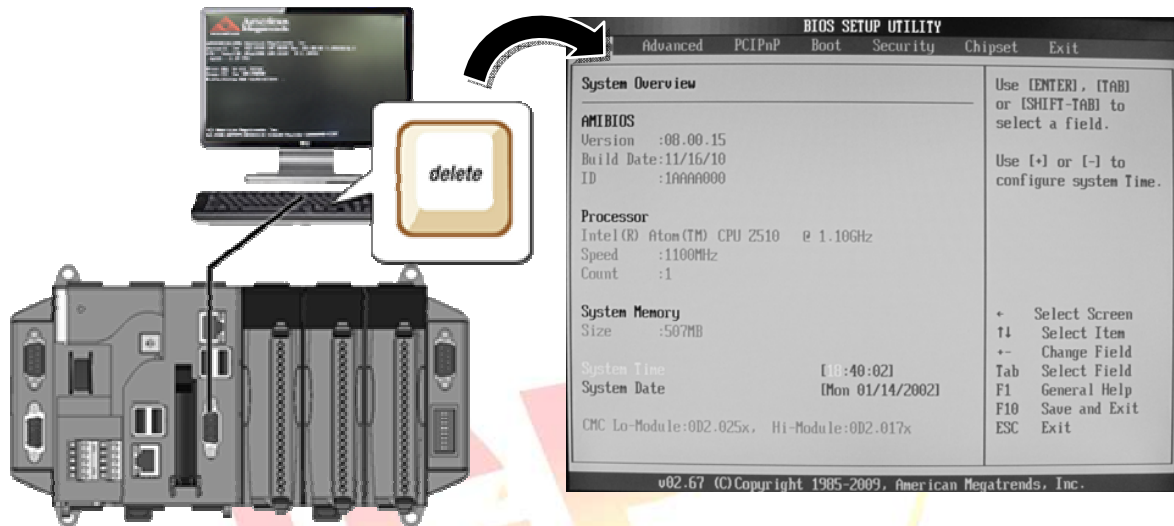
To reinstall XP-8000-Atom-CE6, please follow the steps below

Step 1 Move the rotary switch to position 0, i.e., Normal mode.

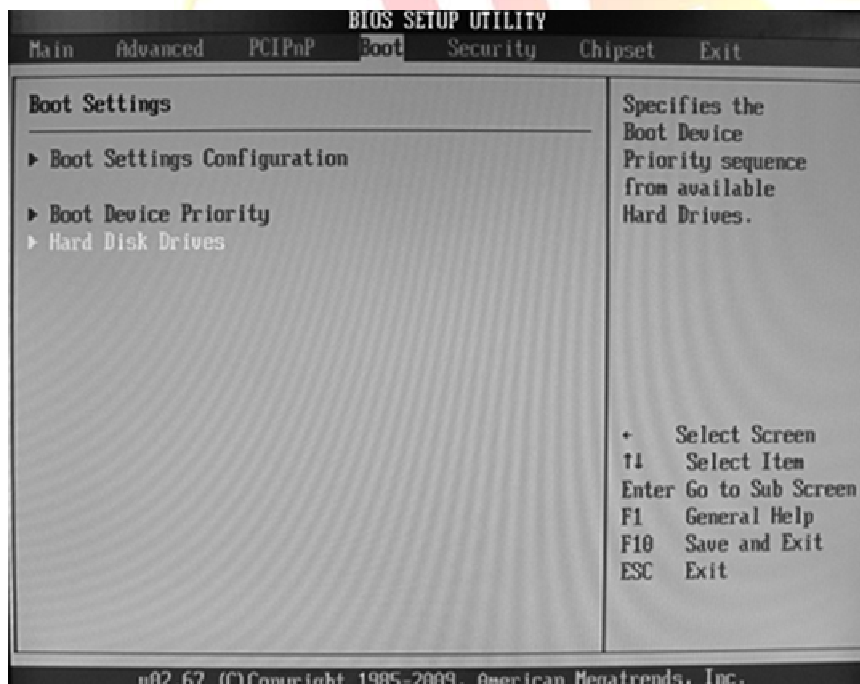


Classification	Update software FAQ on XPAC				No.	4-01-02	
Author	Weikai	Version	1.0.2	Date	2013/12/26	Page	4/16

Step 2 Reboot the XP-8000-Atom-CE6 and access the BIOS setup utility by pressing the "Delete" key

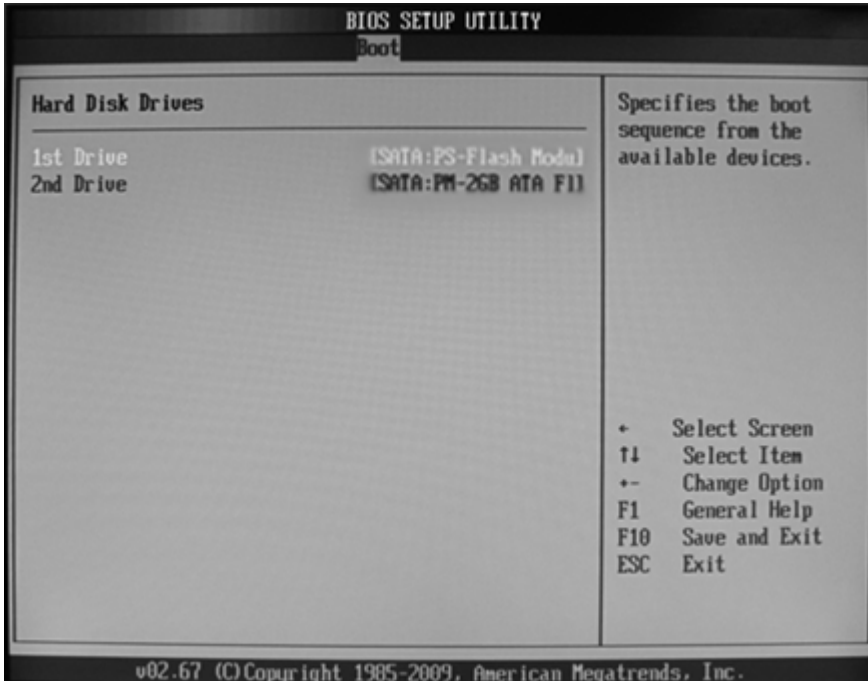


Step 3 Select the Boot menu, and then select the "Hard Disk Drives" option and press "Enter".

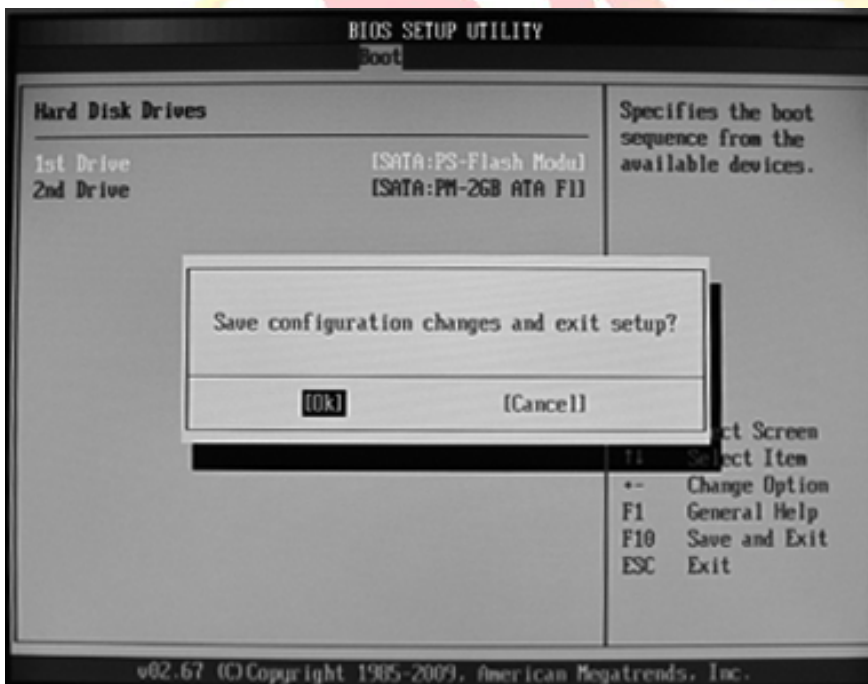


Classification	Update software FAQ on XPAC				No.	4-01-02	
Author	Weikai	Version	1.0.2	Date	2013/12/26	Page	5/16

Step 4 Set the 1st Drive to the PS-Flash Module. The PS-Flash Module is also known as the CF card.



Step 5 Press F10 to save the change to the configuration and exit the setup



Classification	Update software FAQ on XPAC				No.	4-01-02	
Author	Weikai	Version	1.0.2	Date	2013/12/26	Page	6/16

Step 6 After restarting the device, the boot sequence will launch the XP-8000-Atom-CE6 Rescue Utility, as shown below. Type "1" the press "Enter" to create the XPAC_CE default partition

```

=====
==                               ==
                               Main Menu                               ==
=====

**  the following 3 steps help you  **
**  restore default XPAC_CE OS.   **

(1) Step 1: create XPAC_CE default partition.
(2) Step 2: format and restore XPAC_CE to factory default OS.
(3) Step 3: reboot

(6) Display directory information on built-in flash

```

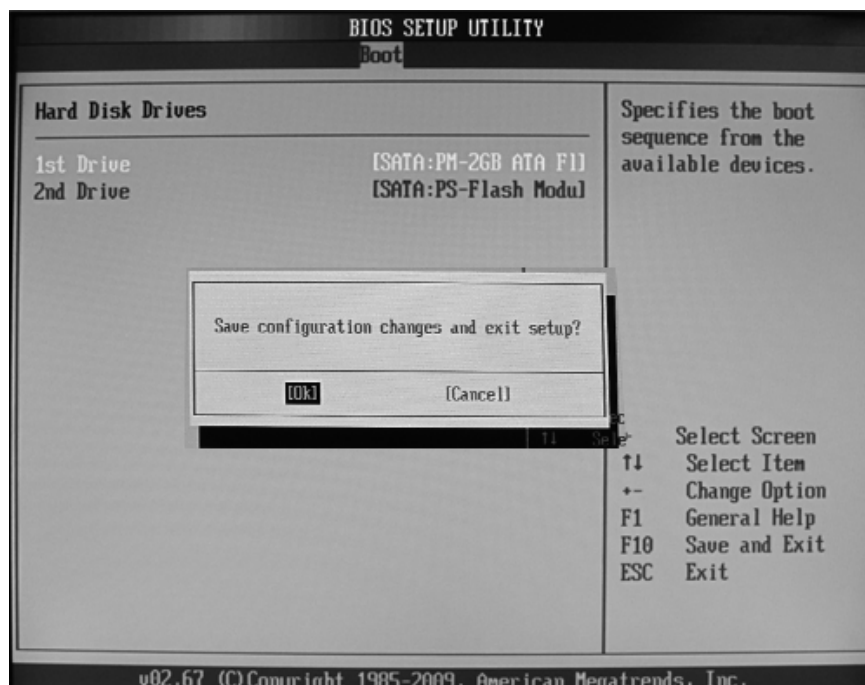
Please enter your choice:

Step 7 Wait for several seconds until the default partition is created. The device will release and again launch the XP-8000-Atom-CE6 Rescue Utility. Type "2" and press "Enter" to format and restore the XPAC_CE to the factory default OS setting.

Step 8 Wait until the XP-8000-Atom-CE6 Rescue Utility is launched again, and then type "3" and press "Enter" to reboot the device.

Classification	Update software FAQ on XPAC				No.	4-01-02	
Author	Weikai	Version	1.0.2	Date	2013/12/26	Page	7/16

Step 9 Repeat step 1 ~ 4 but set the 1st Drive to PM-2GB-ATA F1, which denotes the Built-in flash memory, and then reboot the XP-8000-Atom-CE6.



Step 10 The XP-8000-Atom-CE6 will reset itself to the default setting when the first reboot after the recovery procedure. This process will take about 35 second. After completing the above steps, the XP-8000-Atom -CE6 recovery process is finish.

Classification	Update software FAQ on XPAC				No.	4-01-02	
Author	Weikai	Version	1.0.2	Date	2013/12/26	Page	8/16

Restoring the Rescue Disk

This section describes how to restore the rescue disk should the rescue disk crash or be accidentally formatted.

Requirements: Before attempting to restore the Rescue Disk, you should obtain a copy of Symantec Norton Ghost version 11 or later, which is available by contacting Symantec (<http://www.symantec.com>).

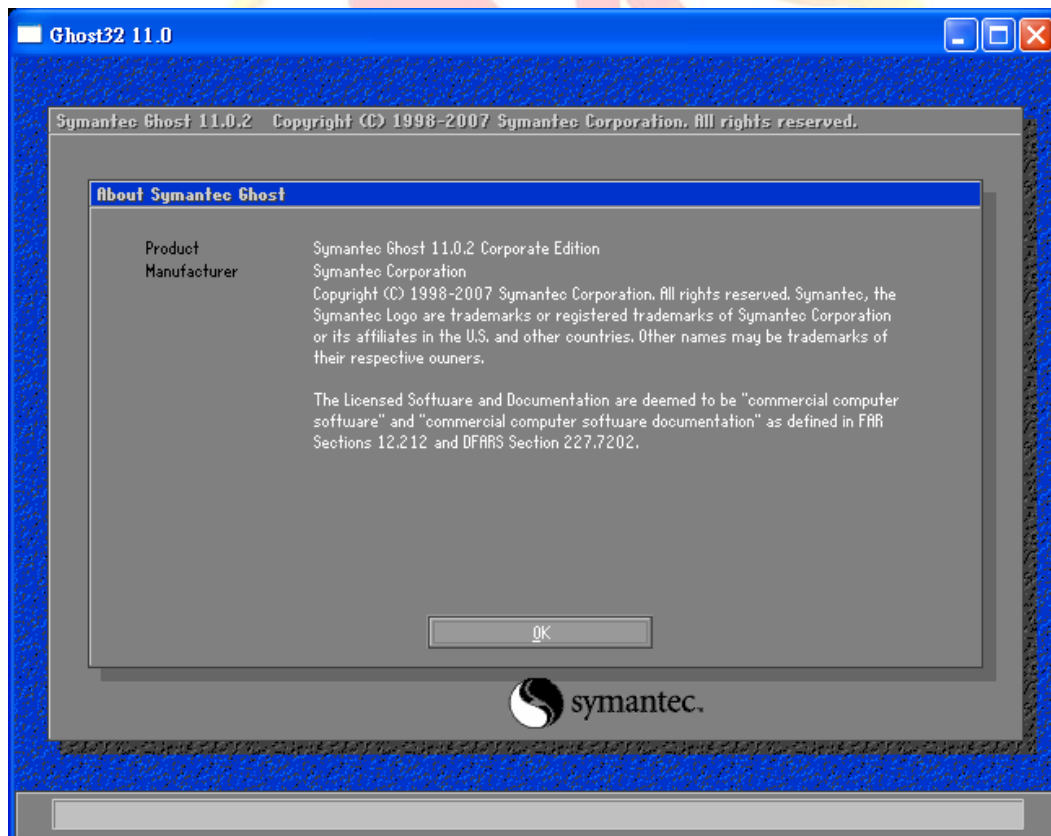
Step 1 Locale the rescue disk ghost file, Atom_Rescue_Disk.gho

ICPDAS supplies a ghost file “Atom_Rescue_Disk_vnnnn.GHO” which can be used to restore the Rescue Disk if crashed, become computed, or has been in advertently formatted (*n* indicates the version member of OS image)

The “Atom_Rescue_Disk_vnnnn.GHO” file can be installed from the CD that was provided with the package, or by downloading the latest version from ICP DAS web site. The file can be found at:

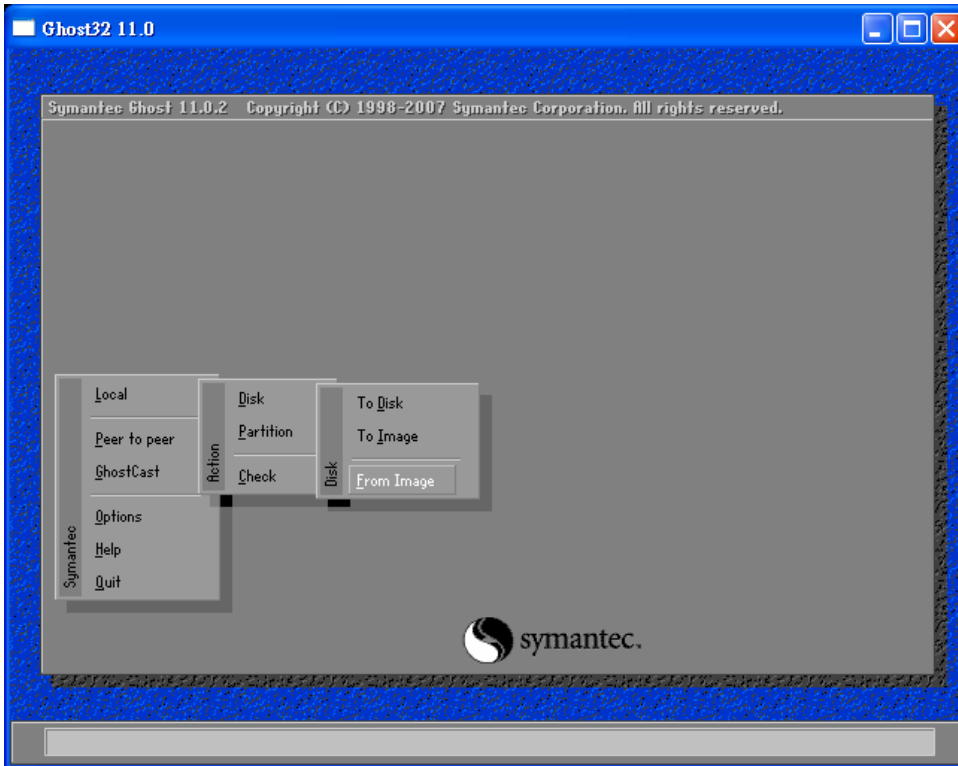
CD:\XPAC-Atom-CE6\Rescue_Disk\
ftp://ftp.icpdas.com/pub/cd/xpac-atom-ce6/rescue_disk/

Step 2 Start Symantec Norton Ghost32 V.11, and then click the "OK" button.

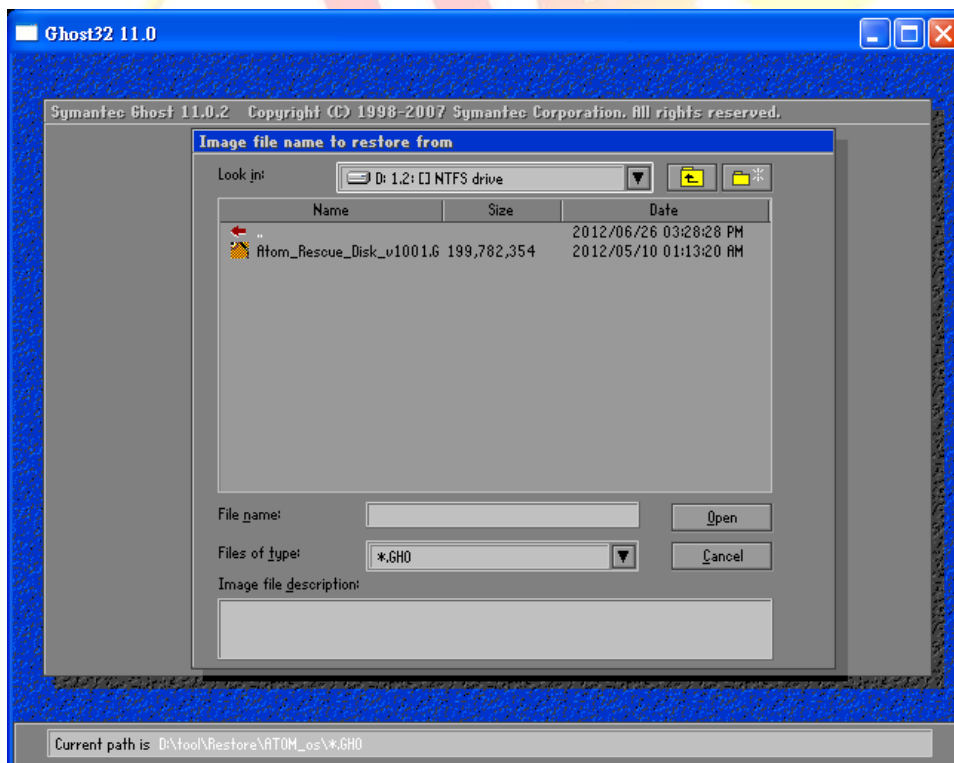


Classification	Update software FAQ on XPAC				No.	4-01-02	
Author	Weikai	Version	1.0.2	Date	2013/12/26	Page	9/16

Step 3 Select "Local" → "Disk" → "From Image" from function menu.

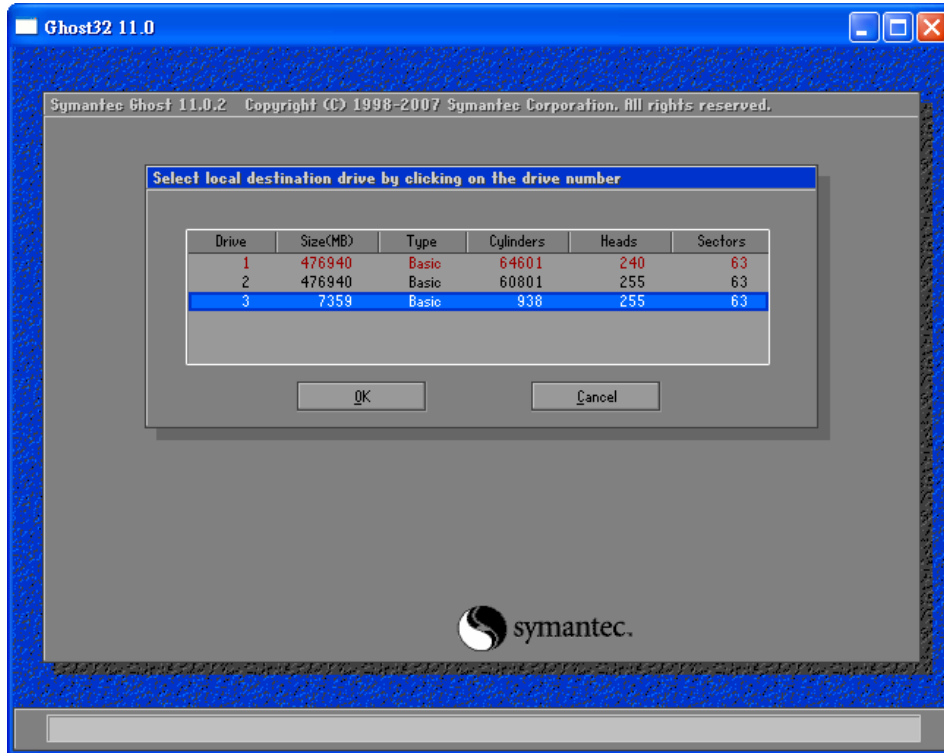


Step 4 The image file to be restored by browsing to the location of the select rescue "Atom_Rescue_Disk_vnnnn.GHO", ghost file that you saved in step 1, and then click the "Open" button.

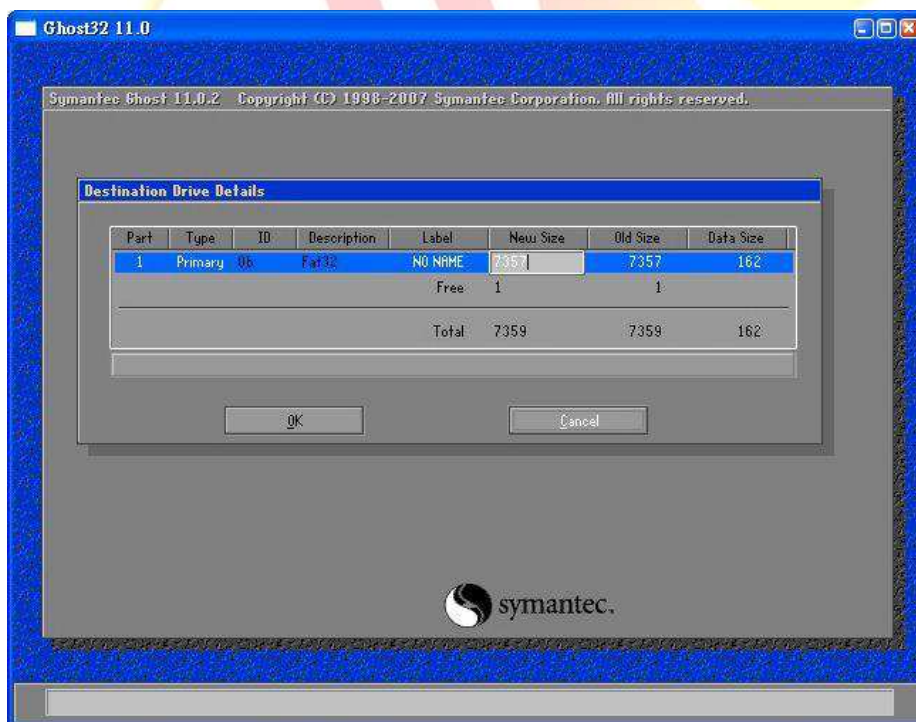


Classification	Update software FAQ on XPAC				No.	4-01-02	
Author	Weikai	Version	1.0.2	Date	2013/12/26	Page	10/16

Step 5 Select the local destination drive by clicking on the drive number for the CF card, and then click the "OK" button.

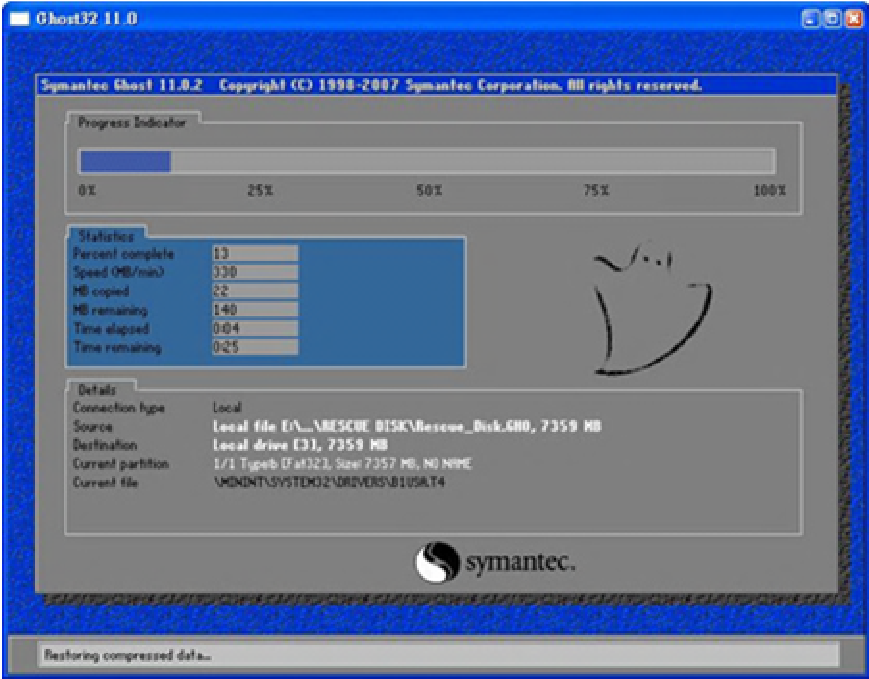


Step 6 Restore the **Atom_Rescue_Disk_vnnnn.GHO** ghost file onto the CF card and then click the "OK" button.



Classification	Update software FAQ on XPAC				No.	4-01-02	
Author	Weikai	Version	1.0.2	Date	2013/12/26	Page	11/16

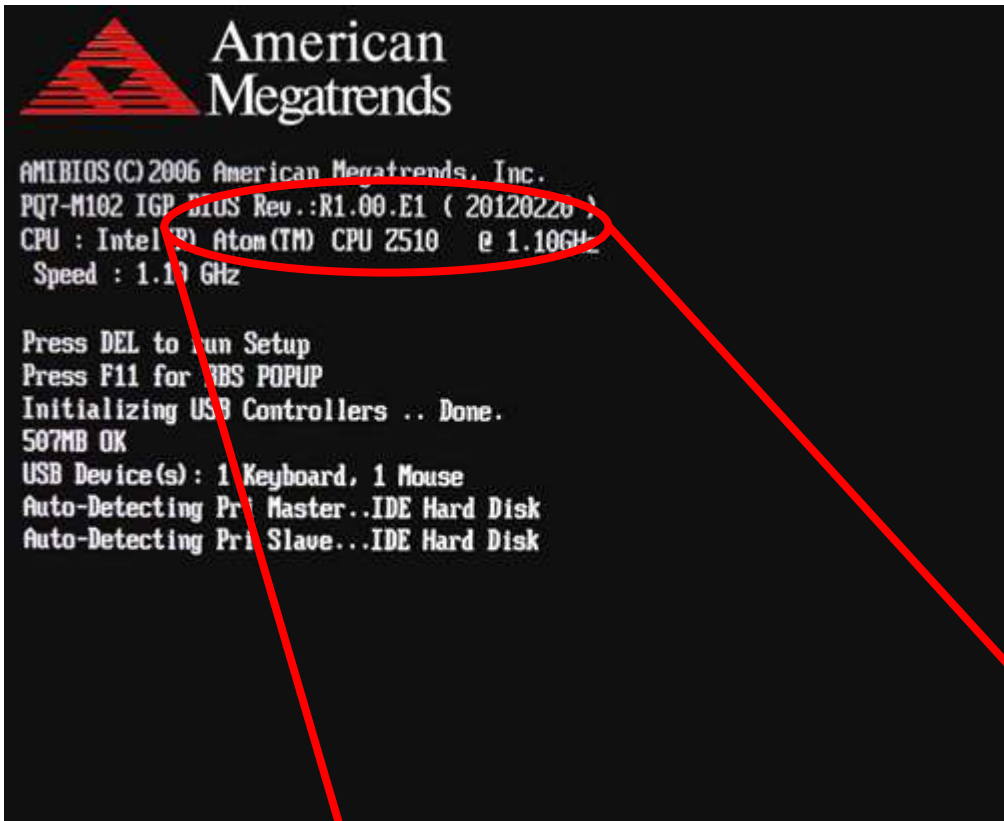
Step 7 A progress indicator will be displayed to indicate the status of the restoration process. Once the progress indicator reaches 100%, the restoration of your rescue disk is complete.



Classification	Update software FAQ on XPAC				No.	4-01-02	
Author	Weikai	Version	1.0.2	Date	2013/12/26	Page	12/16

How to determine the BIOS version

1. Power on the XP-8000-Atom-CE6 and press the "Pause Break" key on your PC keyboard to suspend the boot process.
2. Identify the version number, as shown below:



Classification	Update software FAQ on XPAC				No.	4-01-02	
Author	Weikai	Version	1.0.2	Date	2013/12/26	Page	13/16

How to update the BIOS

Step 1. Download the latest BIOS image file from
ftp://ftp.icpdas.com/pub/cd/xpac-atom-ce6/rescue_disk/bios_update.gho

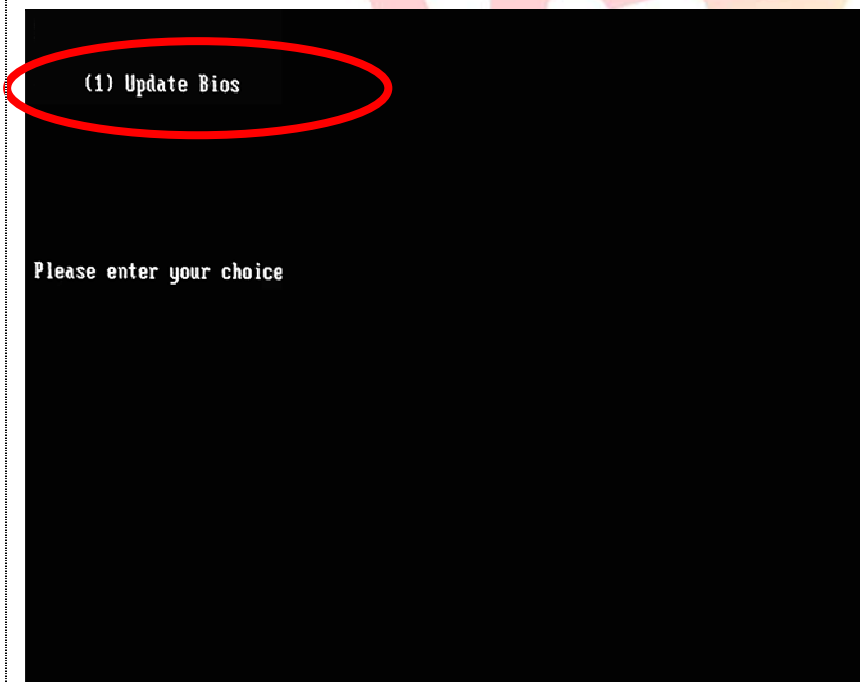
Step 2. Refer to the "Restoring the Rescue Disk" section on pages 8~11 for details of how to restore "bios_update.gho" to your CF card.

Step 3. Follow Steps 1~5 in the "Reinstalling XP-8000-Atom-CE6" section on pages 3~5 for details of how to boot the device from the CF card.

Step 4. After restarting the device, it will display the BIOS update list, Type "1" to update BIOS.

Warning:

Please confirm that the power supply to your device isn't disconnected. If the power is supply interrupted while updating the BIOS, the BIOS may become corrupted, which will prevent the device from booting.



Classification	Update software FAQ on XPAC				No.	4-01-02	
Author	Weikai	Version	1.0.2	Date	2013/12/26	Page	14/16

Step 5. Once the BIOS update has been completed, the following screen will be displayed. Check that all the results are indicated as either ok or done. If the result for any item isn't ok or done, update the BIOS image file and try again. If the results are the same as shown in the image below, you can safely reboot your XPAC.

```
Now update your BIOS.
+-----+
:               AMI Firmware Update Utility Ver.4.14             :
:       Copyright (C)2007 American Megatrends Inc. All Rights Reserved. :
+-----+
- Bootblock checksum .... ok
- Module checksums ..... ok
- Erasing flash ..... done
- Writing flash ..... done
- Verifying flash ..... done
- Erasing NVRAM ..... done
- Writing NVRAM ..... done
- Verifying NVRAM ..... done
- Erasing Bootblock .... done
- Writing Bootblock .... done
- Verifying Bootblock ... done
- CMOS checksum destroyed
- Program ended normally.

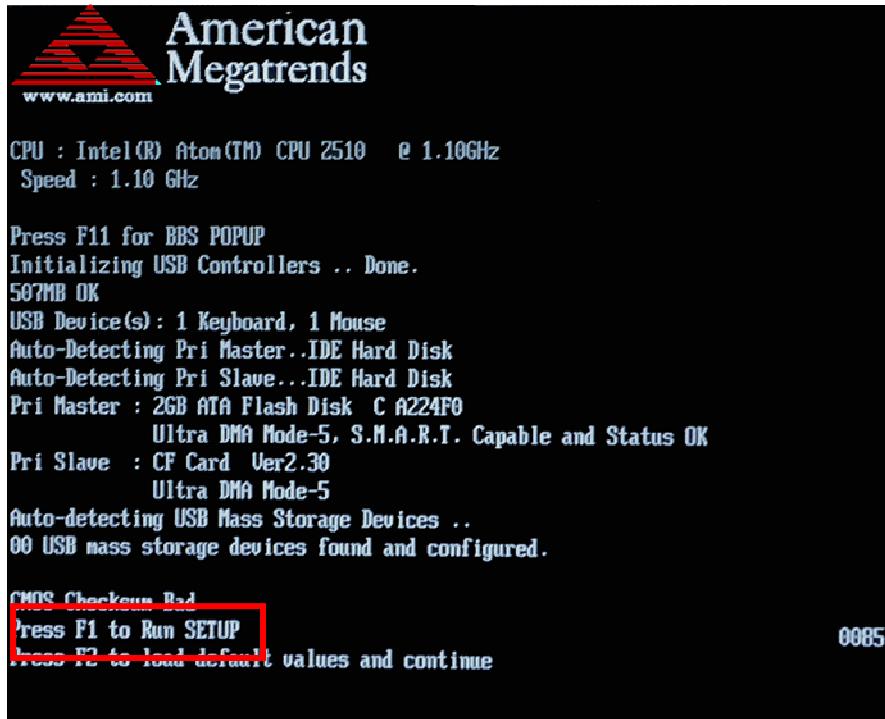
Please reboot your XPAC and resetting your bios.

Press any key to continue . . .
```

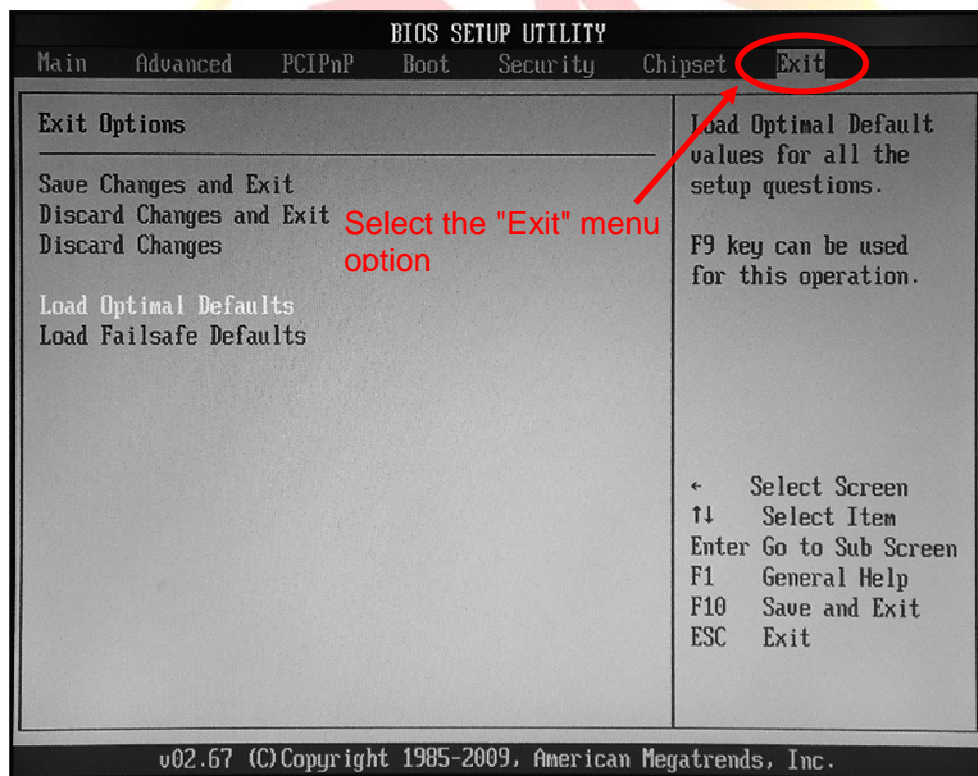
Please check that the results are shown as either "ok" or "done" for each item.

Classification	Update software FAQ on XPAC				No.	4-01-02	
Author	Weikai	Version	1.0.2	Date	2013/12/26	Page	15/16

Step 6. Once the BIOS have been updated and the device rebooted, the following screen will be displayed. Press the "F1" key on your keyboard to reconfigure your BIOS.

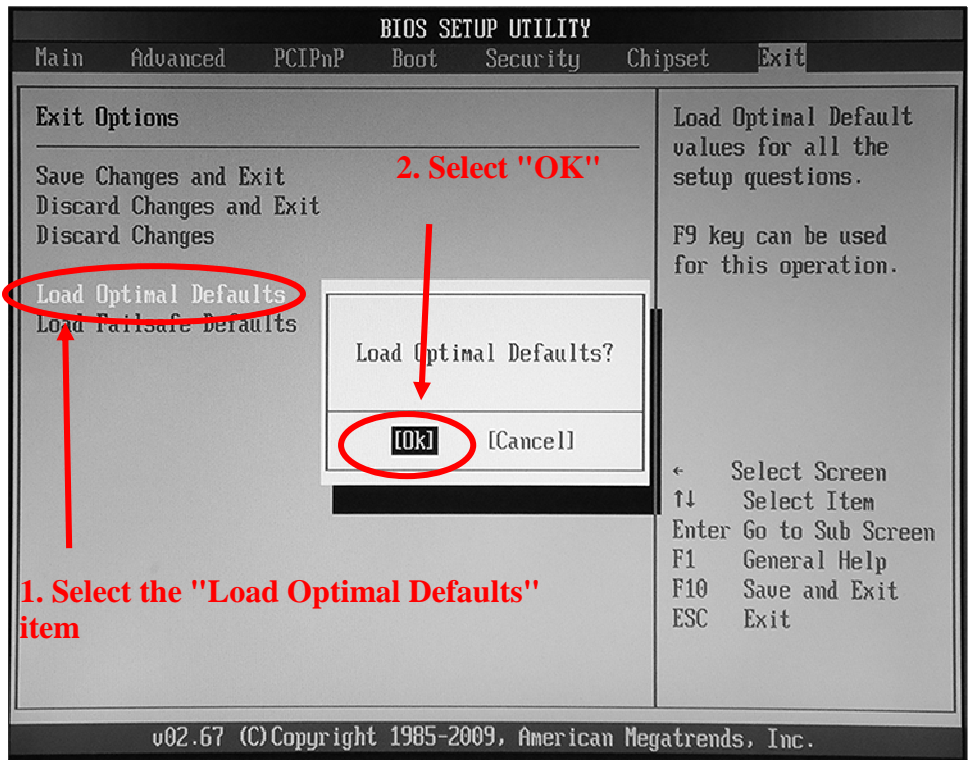


Step 7. Select the "Exit" menu option.



Classification	Update software FAQ on XPAC				No.	4-01-02	
Author	Weikai	Version	1.0.2	Date	2013/12/26	Page	16/16

Step 8. Select "Load Optimal Defaults", and then select "OK" from the popup dialog.



Step 9. Select "Save Changes and Exit" or press the "F10" key on your keyboard, and then select "OK" to save your settings.

