

Classification	System and Application FAQ on XPAC				No.	2-011-00	
Author	WeiKai	Version	1.0.0	Date	2011/3/23	Page	1/2

How to enter characters without a keyboard

Applies to:

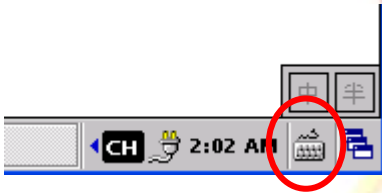
<i>Platform</i>	<i>OS version</i>	<i>XPAC utility version</i>
<i>XPAC series</i>	<i>All versions (WinCE6)</i>	<i>All versions</i>

Because the XPAC has two or four USB port, if USB port filled by other devices, so that you can not use keyboard, there's no way to enter characters. Win CE provides an input panel to enter characters to be entered with a mouse or touch panel.

To enter characters without a keyboard, perform the following steps:

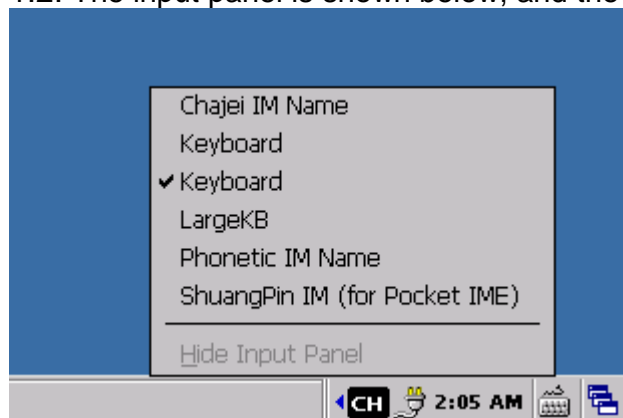
Step 1: Select the Input panel.

1.1. To use the input panel double click on the location as indicated by the arrow in the diagram below.



Classification	System and Application FAQ on XPAC				No.	2-011-00	
Author	WeiKai	Version	1.0.0	Date	2011/3/23	Page	2/2

1.2. The input panel is shown below, and the input panel provider input Chinese or English.



Step 2: Click the key for the character you want to enter on the Input Panel.

