

Classification	System and Application FAQ on XPAC				No.	1-005-05	
Author	WeiKai	Version	1.0.1	Date	2011/6/29	Page	1/5

# How to calibrate an ELO serial touch panel

Applies to:

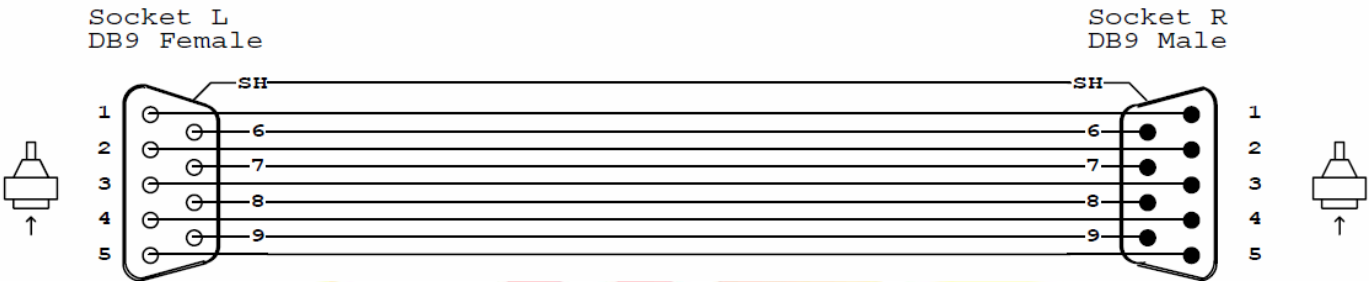
Platform	OS version	XPAC utility version
XPAC series	All versions (WinCE6)	All versions

*N/A: Not applicable to this platform and OS.*

## Tips & Warnings

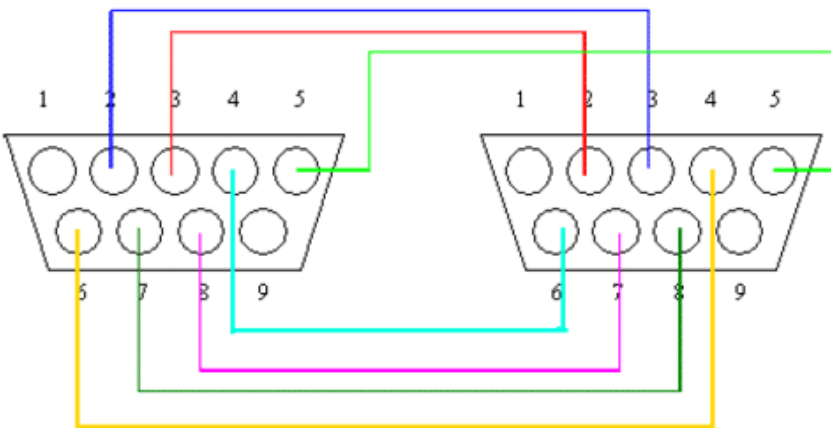
**!** Serial COM Ports 2 and 5 on XP-8000 are standard female/male RS-232 COM Ports. If COM4 is used to connect to the touch panel, you will need a "NULL MODEM".

## Standard Wiring



## NULL MODEM

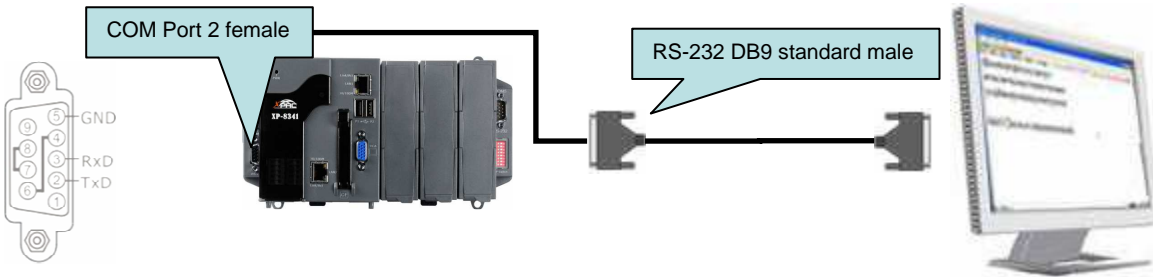
Null Modem DB9 cable : Dreambox Serial cable



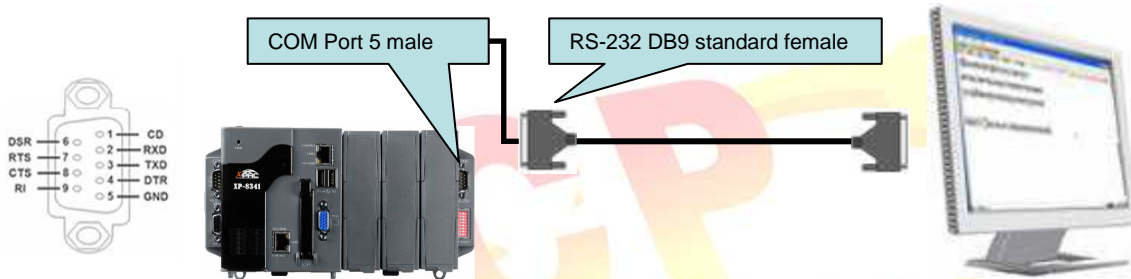
The DB9 side showed here is the one you solder the wires

Classification	System and Application FAQ on XPAC				No.	1-005-05	
Author	WeiKai	Version	1.0.1	Date	2011/6/29	Page	2/5

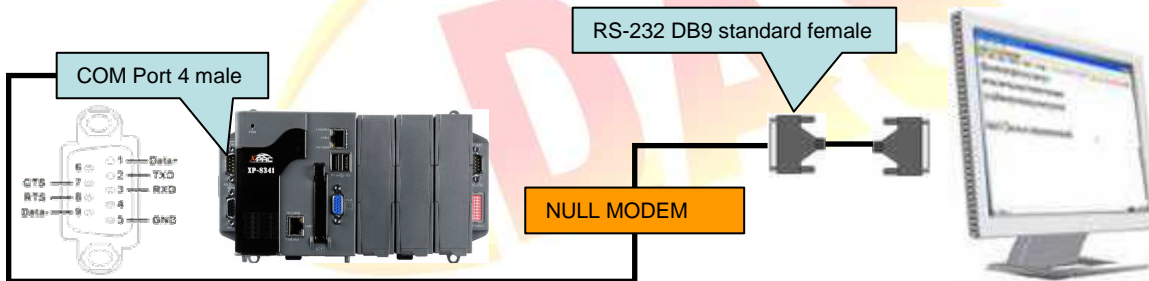
### Connecting to COM 2



### Connecting to COM 5



### Connecting to COM 4



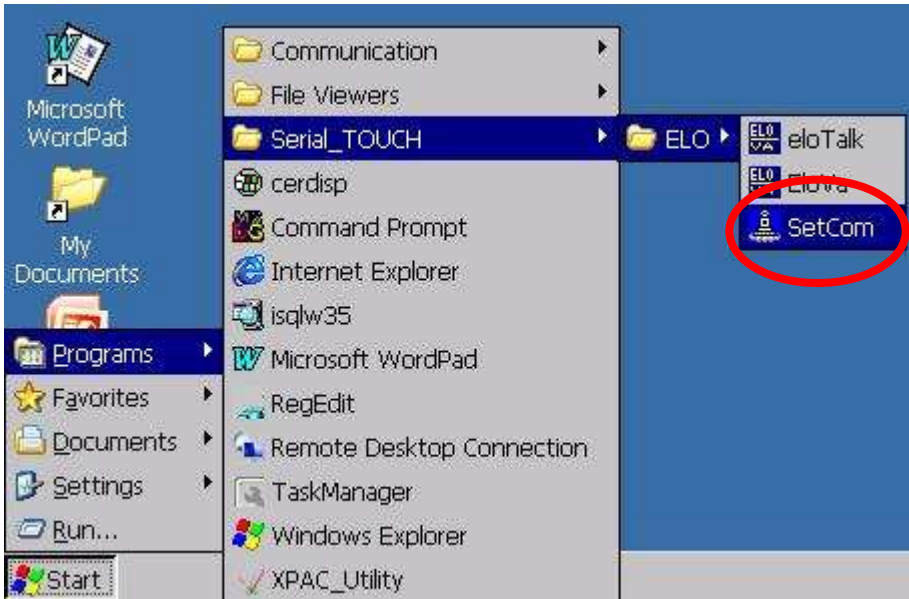
To Set your COM port and calibrate an ELO serial touch panel, perform the following steps:

#### Step 1: Set your COM port.

1.1 After rebooting, select a COM Port be used to connect to the touch panel.

Classification	System and Application FAQ on XPAC				No.	1-005-05	
Author	WeiKai	Version	1.0.1	Date	2011/6/29	Page	3/5

1.2 Click Start->Programs->Serial\_TOUCH->ELO->SetCom.exe



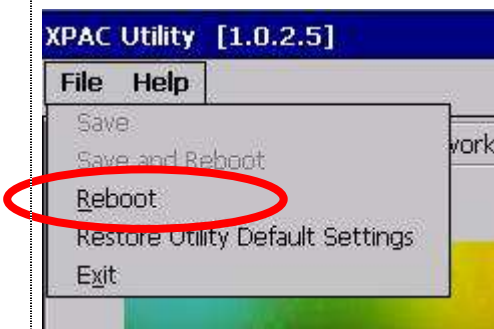
1.3 Perform the SetCOM process.



1.4 Select the COM port you use. (Default COM port is “COM5:”)

**Step 2: Reboot** your XPAC.

2.1. Start the XPAC utility on the desktop. **Click** the “File->Reboot” menu option.



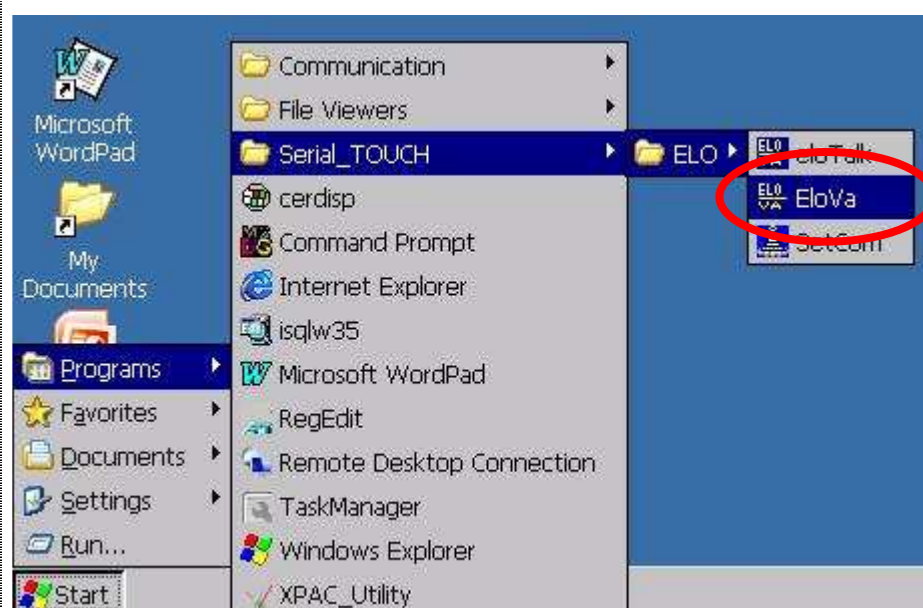
Classification	System and Application FAQ on XPAC				No.	1-005-05	
Author	WeiKai	Version	1.0.1	Date	2011/6/29	Page	4/5

2.2. **Click** the “Yes” button and wait for the device to reboot.



**Step 3: Execute** the calibration program.

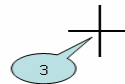
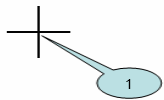
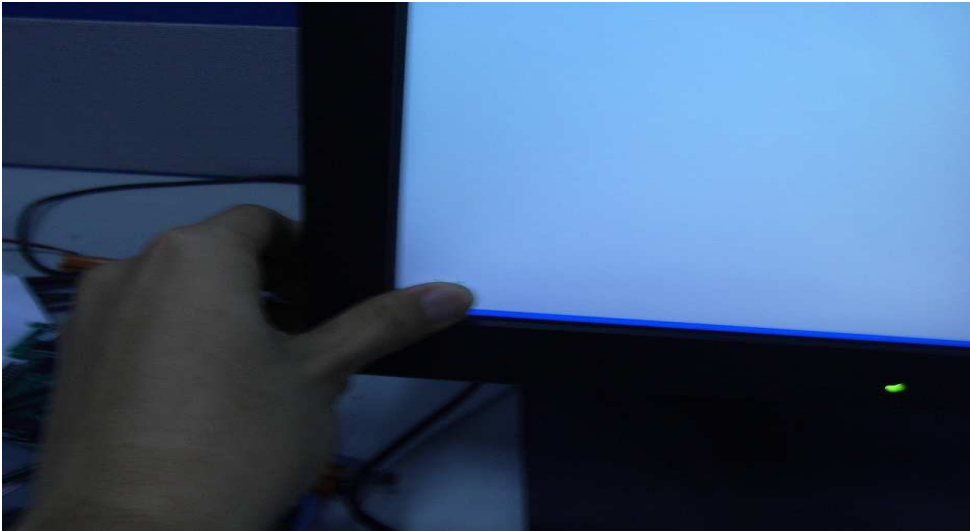
3.1. Click Start->Programs->Searial\_TOUCH->ELO->EloVa.exe



Classification	System and Application FAQ on XPAC				No.	1-005-05	
Author	WeiKai	Version	1.0.1	Date	2011/6/29	Page	5/5

3.2. Perform the calibration process.

3.1. Touch the “+” icons on the monitor to perform the calibration process.



Touch targets from a position of normal use.

