

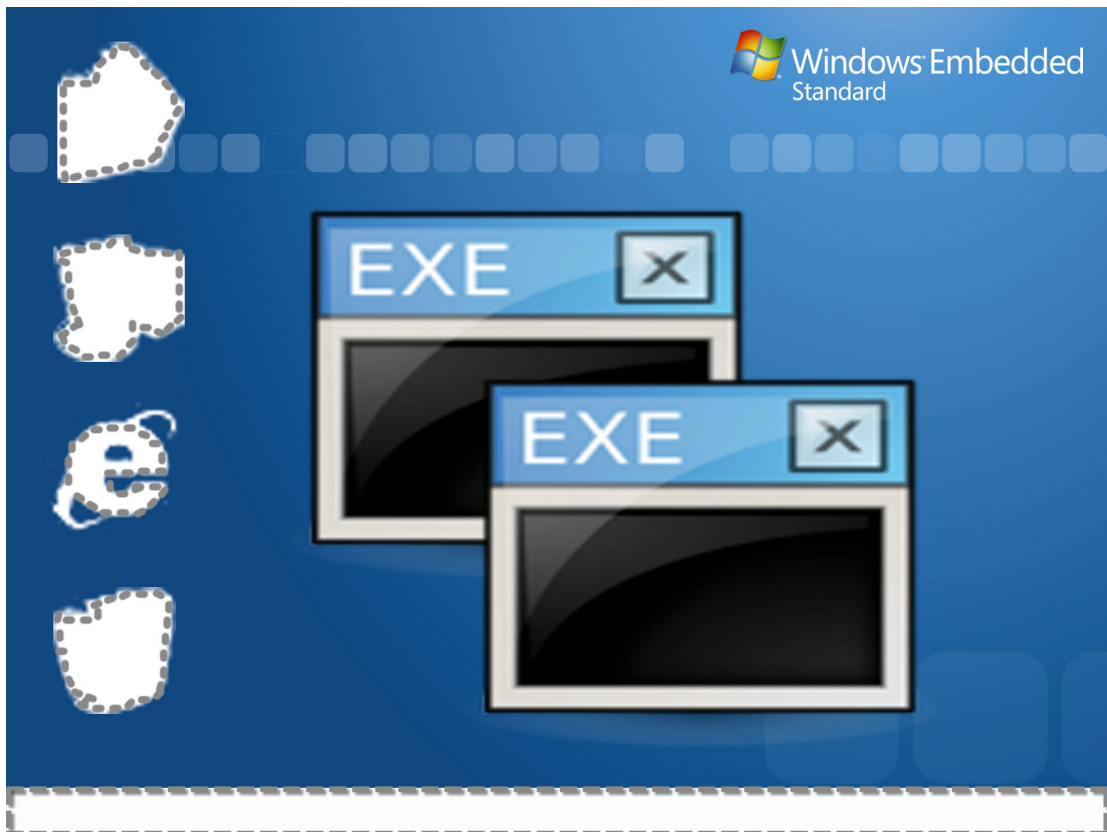


# XP-8000 No-Desktop Version

Version 1.0, August 2013

## 1. Introduction

---



A new operating system for the XP-8000 has been launched: the No-Desktop version. The new version allows users to configure programs to run automatically at startup and forces users to only use specific applications. When the system is switched to "Auto-execution" mode, any of operators using this XPAC device will not be able to modify any of the system settings or open other programs. In this way, you can ensure that any custom programs will run correctly, and can also prevent other operators from using the "Ctrl + Alt +

Delete" key combination to force running programs to terminate, thereby protecting system security.

Both the No-Desktop version and the Standard version include the same functional components and the same default installed software and SDK. The only difference is that the No-Desktop version does not provide a desktop environment, so the desktop shortcut cannot be customized to quickly open a program and only the built-in Shell Panel utility can be used to perform any actions.

## 2. Use the Rotary Switch to Change the User Mode

The XP-8000 No-Desktop OS provides two user operation modes: “Configuration Mode” and “Auto-execution Mode”. The Rotary Switch is used to control the User Mode.

➤ Configuration Mode:

In this mode, the Shell Panel tool can be used to operate the XPAC and to specify any programs that should run automatically after logging in windows.



Turn the Rotary Switch to position “5” and power on to log in windows.



➤ Auto-execution Mode:

When the XPAC is booted up, any programs that are set to run automatically will be launched and only these programs can be operated. In this mode, no other programs can be opened, nor can the system settings for the XPAC be modified.



Turn the Rotary Switch to position “0” and power on to log in windows.



### 3. Scheduling Programs to Run Automatically

To schedule a program to run automatically when the XPAC starts up, use the XPAC Utility and follow the procedure described below.

#### Step 1:

Move the Rotary Switch to position “5” and then reboot the system to start the device in Configuration Mode.



#### Step 2:

- i. Click the **XPAC Utility** button in the **Shell Panel** tool window.



- ii. When the XPAC Utility opens, click the **Auto Execution** tab.

For each program you wish to configure, click the "...” button to display the

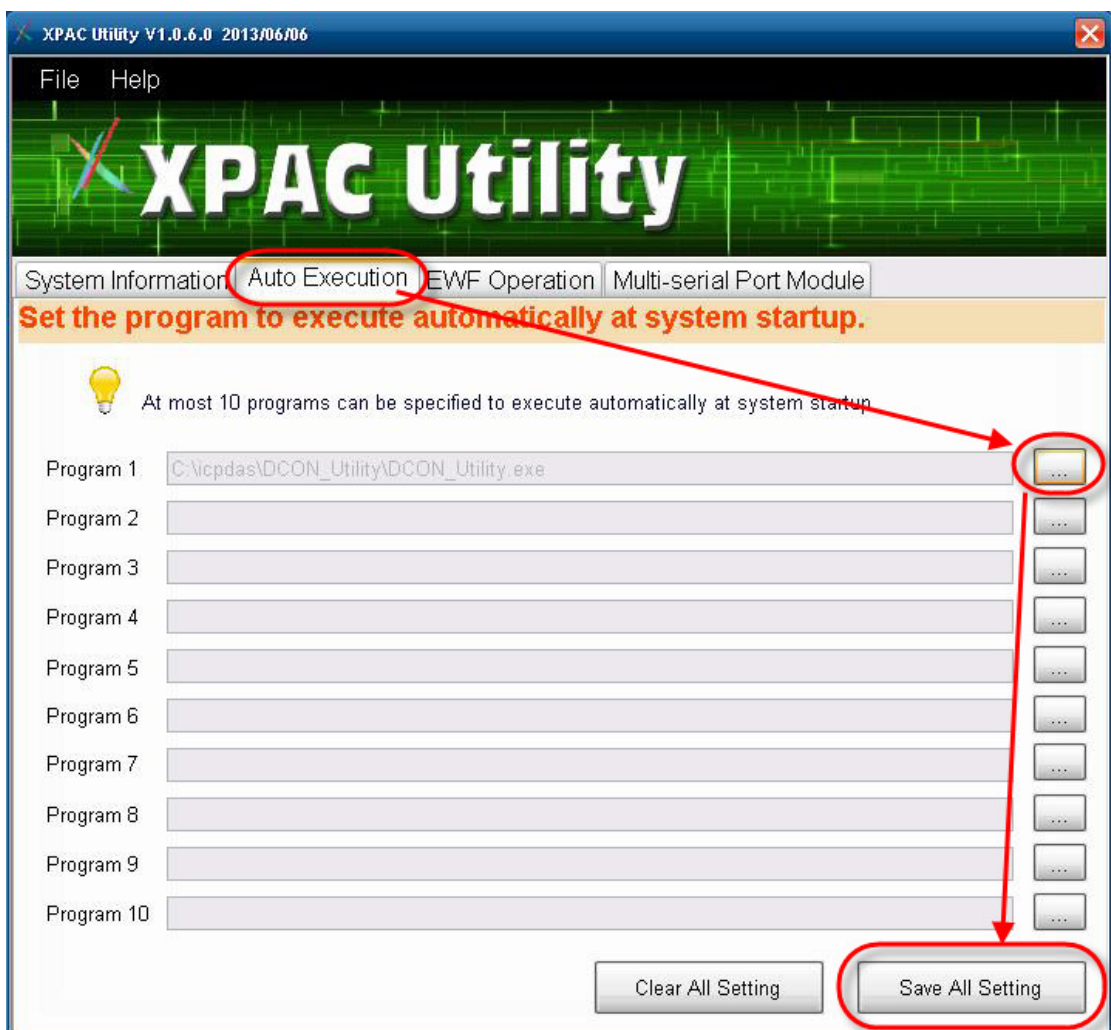
Windows **Open** dialog box and select the executable file for the program.

Click the **Open** button and the path to the program will be inserted in the

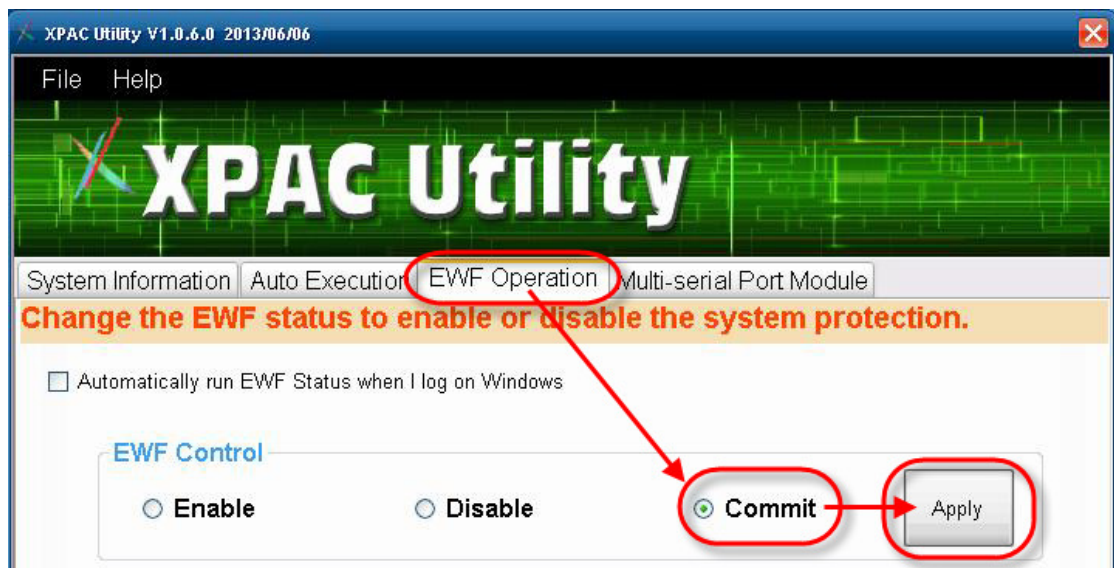
relevant text field. Click the **Save All Setting** button to save your changes.

Note that a maximum of 10 programs can be configured to run

automatically when the XPAC starts.



- iii. Click the **EWF Operation** tab and then click the **Commit** option button.  
Click the **Apply** button to write the settings to the protected C drive.



- iv. After finalizing the settings, you can test whether the program you have configured correctly by pressing the **Test Auto Run** button in the Shell Panel tool window.



**Step 3:**

Move the Rotary Switch to position "0", and then reboot the system. The program(s) that you specified in Step 2 will automatically run.

## **4. Creating a Custom Boot Screen**

By default, the XP-8000 No-Desktop OS does not display an image after the XPAC boots up, but a customized boot screen can be created (e.g., the company logo). Before continuing with the procedure outlined below, you should prepare an image to be used as the boot screen. The size of the image should be 640 by 480 pixels and saved in 4-bit 16-color bitmap file format. Note that any image used should be in this fixed format in order to be accepted by the system.

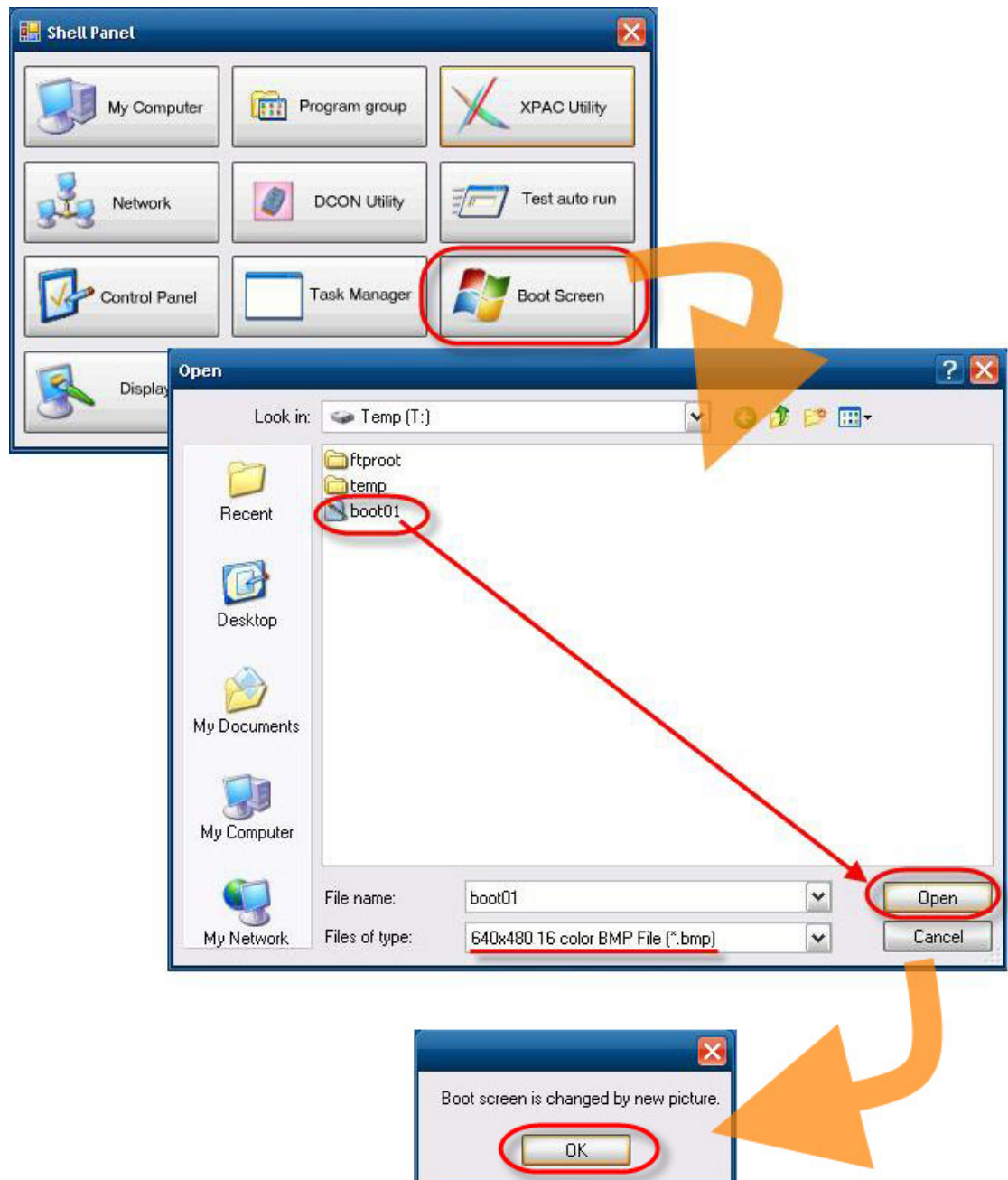
### **Step 1:**

Move the Rotary Switch to position “5” and then reboot the system to start the device in Configuration Mode.



## Step 2:

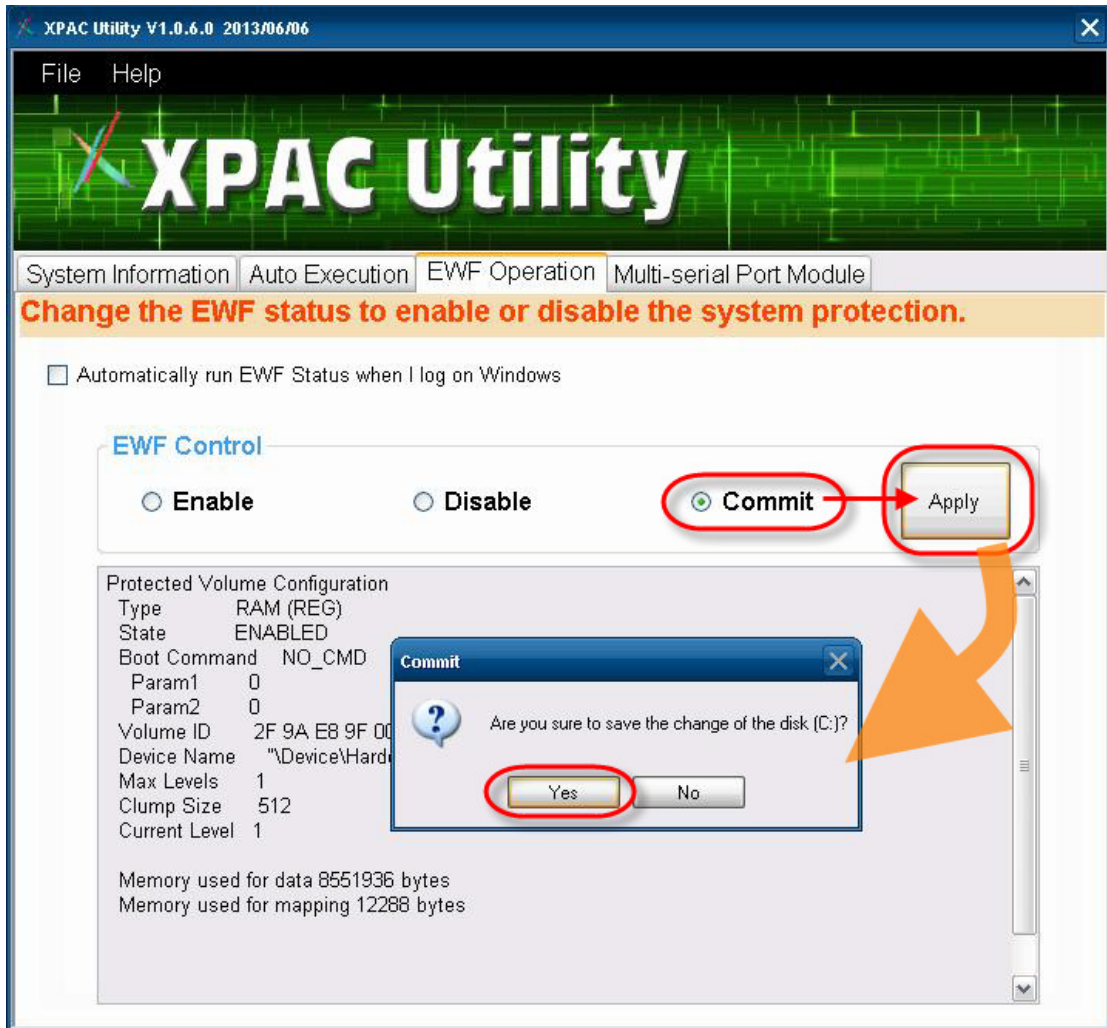
Click the **Boot Screen** button in the **Shell Panel** tool window to display the Windows **Open** dialog box. Locate and select the boot screen file you wish to use and then click the **Open** button. The Boot Screen image will be changed.







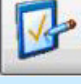
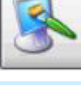

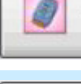
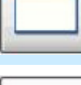
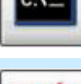
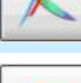
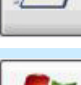
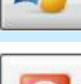
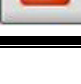
### Step 3:

Open the XPAC Utility and click the **EWF Operation** tab, and then click the **Commit** option button. Click the **Apply** button to write the new settings to the protected C drive.



## 5. Shell Panel Tool

The Shell Panel tool is specific to the XP-8000 No-Desktop OS, and provides shortcuts to many of more frequently used programs, which are described in more detail below.

Button	Function
 My Computer	Click the button to open windows explorer.
 Network	Click the button to open the network connections.
 Control Panel	Click the button to open the control panel.
 Display	Click the button to open display setting.
 Program group	Click the button to open program group.
 DCON Utility	Click the button to run DCON Utility.
 Task Manager	Click the button to run task manager.
 Dos prompt	Click the button to run dos prompt.
 XPAC Utility	Click the button to run XPAC Utility.
 Test auto run	Click the button to run the auto execute programs.
 Boot Screen	Click the button to set the boot image.
 Shut Down	Click the button to shut down the system.

## Revision History

The table below shows the revision history.

Revision	Date	Description
1.0	August 2013	Initial issue