

Classification	NAPOPC_XPE FAQ				No.	1-003-E	
Author	James	Version	1.0.0	Date	2010/7/12	Page	1/2

How to connect XPAC to WinPAC and ViewPAC via NAPOPC DCOM settings?

Applies to:

Platform	OS version	NAPOPC version
XPAC	XPE	NAPOPC_XPE v1.12

In this case, [XPAC](#) is the [OPC Client](#) and [WinPAC/ViewPAC](#) is the [OPC Server](#). Set up DCOM settings of both [XPAC \(Client\)](#) and [WinPAC/ViewPAC \(Server\)](#) first, and then [XPAC \(Client\)](#) could take the data from [NAPOPC_CE5](#) of [WinPAC/ViewPAC \(Server\)](#) by the [OPC Client program](#):

Step 1:

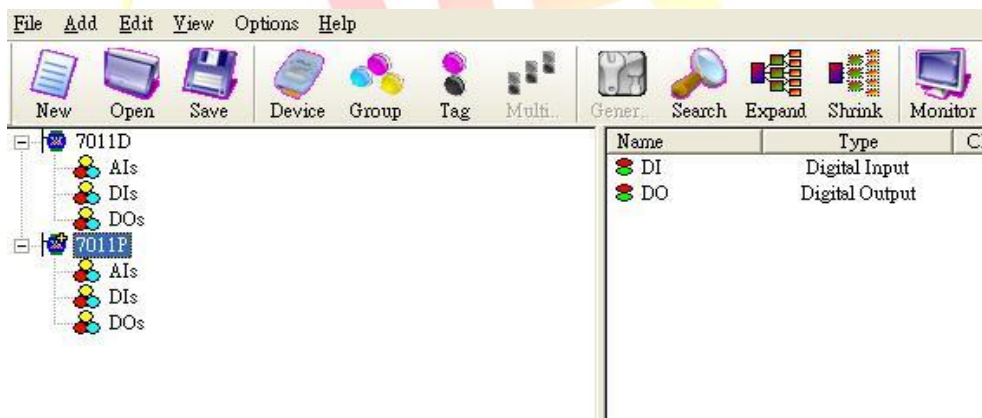
Accomplish DCOM settings of [WinPAC/ViewPAC \(Server\)](#). Please refer to **NAPOPC_XPE manual 4.2.3**

Step 2:

Accomplish DCOM settings of [XPAC \(Client\)](#). Please refer to **NAPOPC_XPE manual 4.2.5**

Step 3:

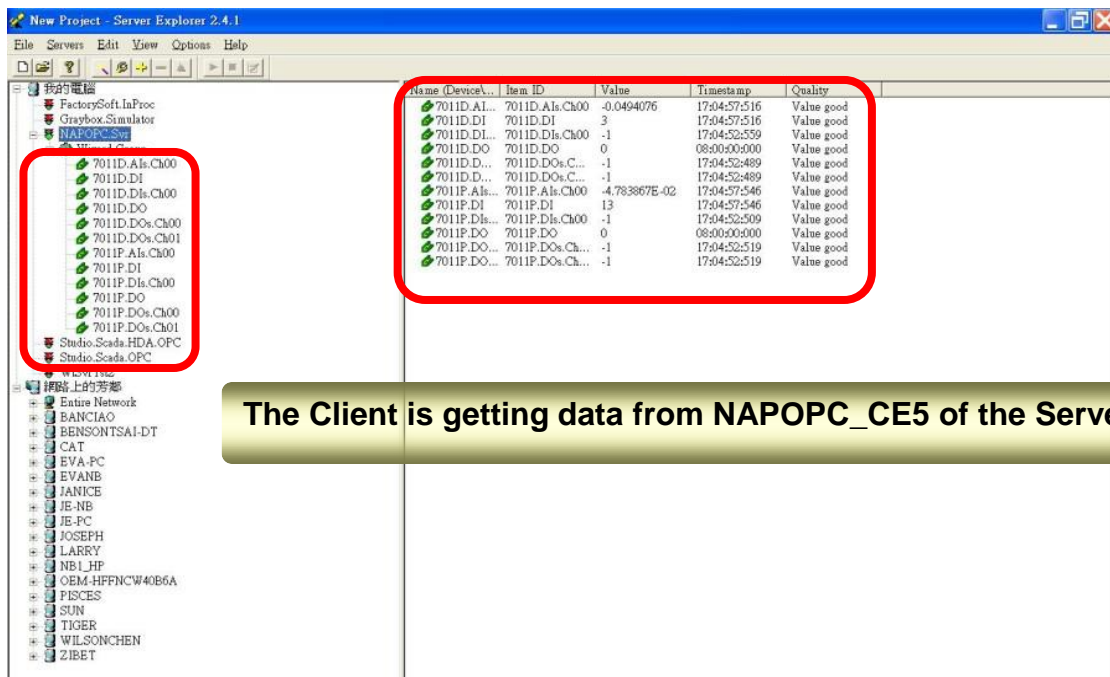
Edit your [NAPOPC_CE5](#) project on [WinPAC/ViewPAC \(Server\)](#).



Step 4:

Execute your OPC Client program on [XPAC \(Client\)](#), and connect it to [NAPOPC_CE5](#) of [WinPAC/ViewPAC \(Server\)](#). Furthermore, you could exchange data between XPAC and WinPAC/ ViewPAC. In following capture, the OPC Client program is **Server Explorer** (Provided by **NI**).

Classification	NAPOPC_XPE FAQ				No.	1-003-E	
Author	James	Version	1.0.0	Date	2010/7/12	Page	2/2



The Client is getting data from NAPOPC_CE5 of the Server

NOTE:

1. The User Account of both Server and Client must be the same. Please pay attention to it when you set User Account.
2. Install NAPOPC DA Server on both Server and Client, it's better for data exchange.
3. Please notice the last step of DCOM settings on "Client".

NAPOPC DA Server properties -> Location: You have to input the IP Address of "Server".

