
Chapter 4 Setting Up a Web HMI Demo

The WinPAC-5xx7 (or WP-5xx7) is the abbreviation of the WP-5147.
The WinPAC-5xx6 (or WP-5xx6) is the abbreviation of the WP-5146.

Important Notice:

1. Please always set a **fixed IP** address to the WinPAC-5xx7. (No DHCP)
2. Recommend to use the Industrial Ethernet Switch (NS-205/NS-208) or Real-time Redundant Ring Switch (RS-405/RS-408) for WP-5xx7/5xx6.
3. The only I/O slot for XW-board in the WP-5xx7 is slot 0.

4.1 Web Demo List

The Web page location:

WinPAC-5xx7 CD-ROM: \napdos\isagraf\wp-5xx7\wp_webhmi_demo\

The respective ISaGRAF project location:

WinPAC-5xx7 CD-ROM: \napdos\isagraf\wp-5xx7\demo\

Demo list:

Name	Description	“IO Connection”
sample	A Web HMI sample	No I/O board
example1	A simple example listed in Chapter 4	slot 0: XW107
wphmi_01	Display controller's date & time	No I/O board
wphmi_02	DI & DO demo	slot 0: XW107
wphmi_03	Read / Write Long, float & Timer value	No I/O board
wphmi_04	Read / Write controller's String	No I/O board
wphmi_05	Multi-Pages demo Page menu is on the Left	slot 0: XW107
wphmi_05a	Multi-Pages demo Page menu is on the Top	slot 0: XW107
wphmi_06	AIO demo, scaling is in ISaGRAF	slot 2: (Virtual) I-87024W slot 3: (Virtual) I-8017HW
wphmi_07	AIO demo, scaling is in PC	slot 2: (Virtual) I-87024W slot 3: (Virtual) I-8017HW
wphmi_08	download controller's file to PC	slot 0: XW107
wphmi_09	pop up an alarm window on PC	slot 0: XW107
wphmi_11	Trend curve.	slot 2: (Virtual) I-87024W slot 3: (Virtual) I-8017HW

wphmi_12	Record 1 to 8 Ch. i8017HW 's volt every 50ms and draw trend curve by M.S.Excel	slot 3: (Virtual) I-8017HW slot 2: (Virtual) I-8024W
wphmi_13	Record 1 to 4-Ch. i8017HW's voltage every 10ms and draw trend curve by M.S.Excel	slot 3: (Virtual) I-8017HW slot 2: (Virtual) I-8024W

4.2 Steps to Set Up a Web HMI Demo

4.2.1 Step 1 - Setup the Hardware

A. Please have one WP-5147 and then plug one XW107 board in its slot 0.

If you don't have the XW107 (8 IN & 8 OUT board), please follow the same steps as below however your Web HMI demo may be replaced to "wphmi_01" not "wphmi_05"

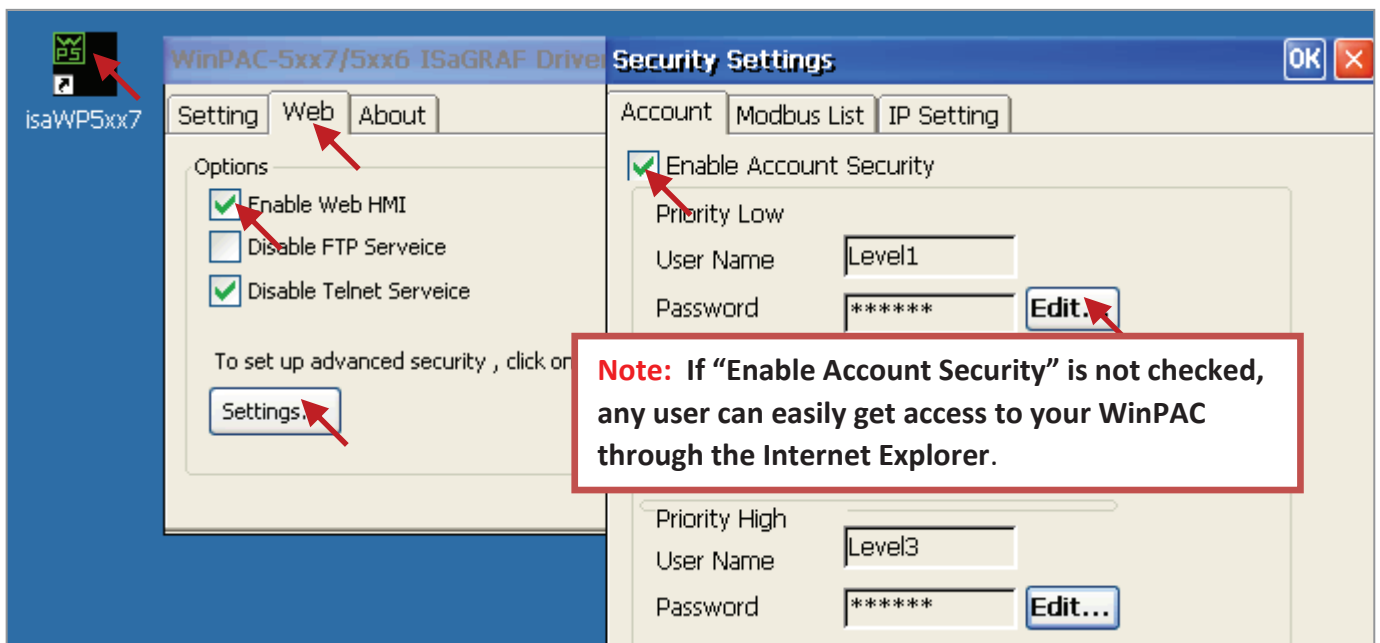
B. Prepare one VGA monitor, one USB mouse and one Ethernet cable and then connect them to the WinPAC-5xx7. (Keyboard is using the software keyboard on the bottom-right of the VGA screen)

C. Power the WinPAC-5xx7 up.

4.2.2 Step 2 - Setting the Web Options

A. Please refer to the [Appendix A.3](#) to set a **fixed IP** address to the WinPAC. (No DHCP)

B. Check on "Enable Web HMI" and then click on "Setting", Please check the "Enable Account Security" and then click on "Edit" to set (username , password). **Then remember to click on "OK"**



4.2.3 Step 3 - Download ISaGRAF Project

Please download ISaGRAF project “wphmi_05” to the WinPAC-5xx7. This project is in the WP-5xx7 CD-ROM:\napdos\isagraf\wp-5xx7\demo\ “wphmi_05.pia”

wphmi_05 demo need one XW107.If you don't have the XW107 (8 DI & 8 DO board), you may download “wphmi_01” (CD-ROM:\napdos\isagraf\wp-5xx7\demo\ “wphmi_01.pia”)

If you know how to restore “wphmi_05.pia” to your ISaGRAF Workbench and download it to the controller, please go ahead to the [Section 4.2.4](#).

However if you don't know it, please refer to the below steps. Please make sure the ISaGRAF Workbench is already installed to your PC. (Refer to the [Section 2.1](#) & [2.2](#))

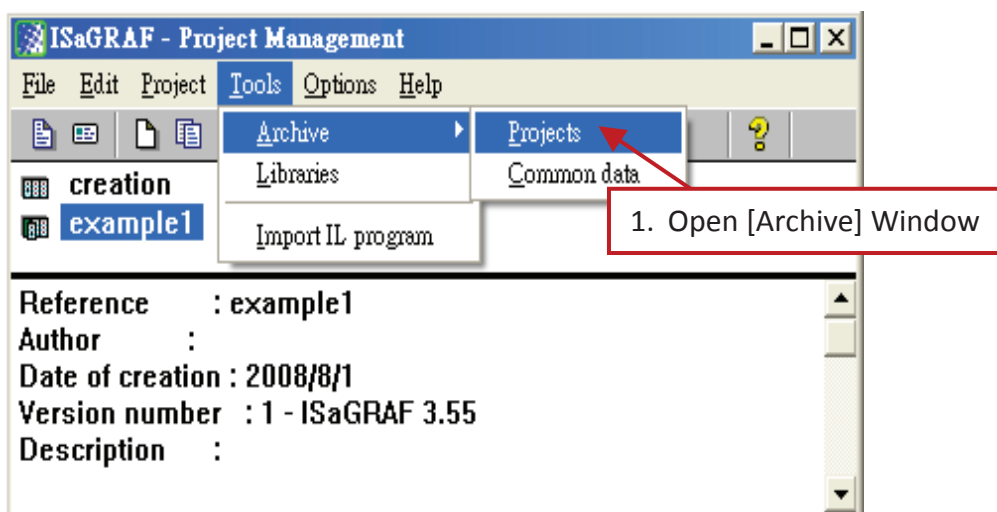
Steps to Backing Up & Restoring an ISaGRAF Project:

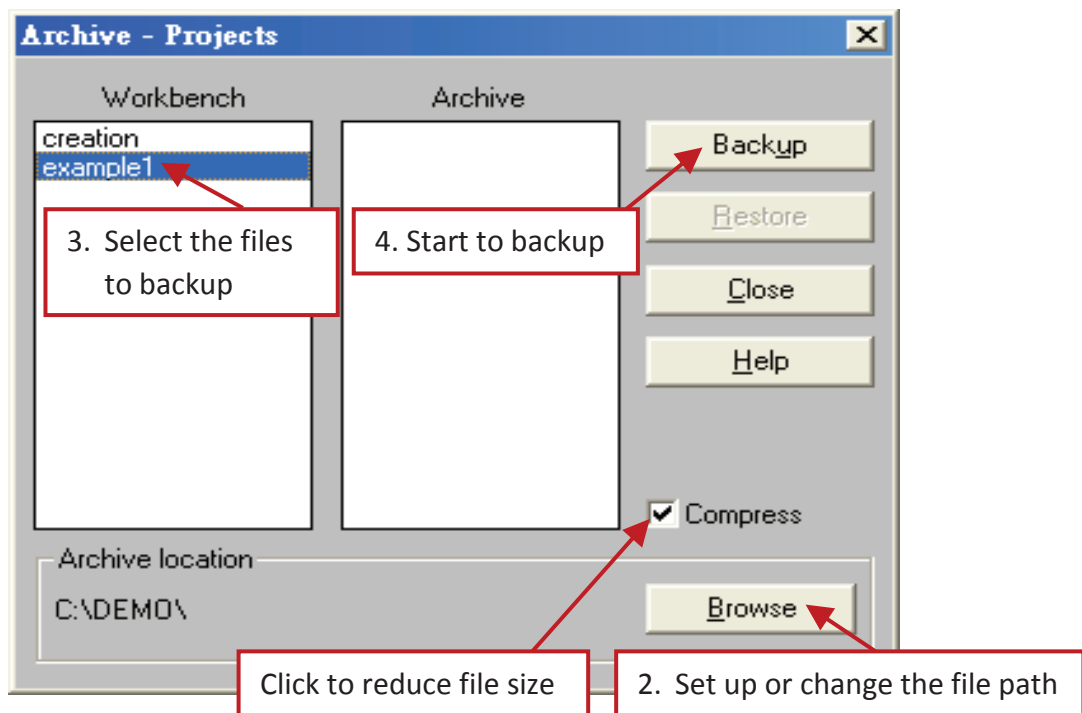
For archiving purposes you can "Back Up" and "Restore" an ISaGRAF project. For example, you may want someone to test your program or email to service@icpdas.com for ICP DAS's ISaGRAF technical service.

Backing Up an ISaGRAF Project

Open the "ISaGRAF Project Management",

1. Select "Tools" > "Archive" > "Projects" from the menu bar to open "Archive - Projects" window.
2. Click on “Browse” to set up the file path (e.g. C:\demo), and you can also click "Compress" to reduce the file size.
3. Select the project name you want to backup from the “Workbench” field.
4. Click on "Backup" to start the process.

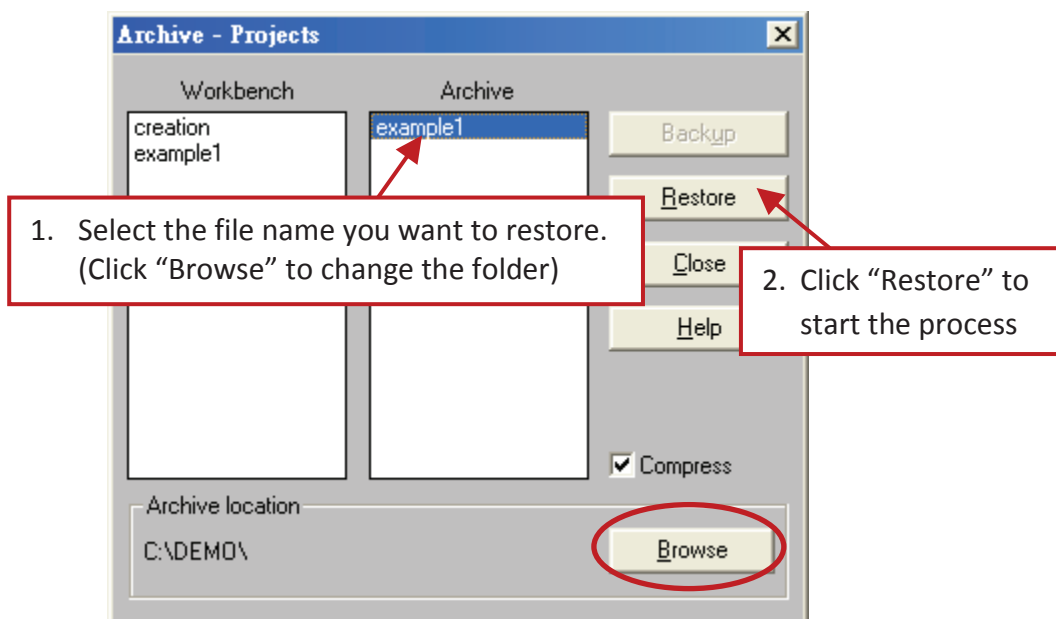




Restoring an ISaGRAF Project

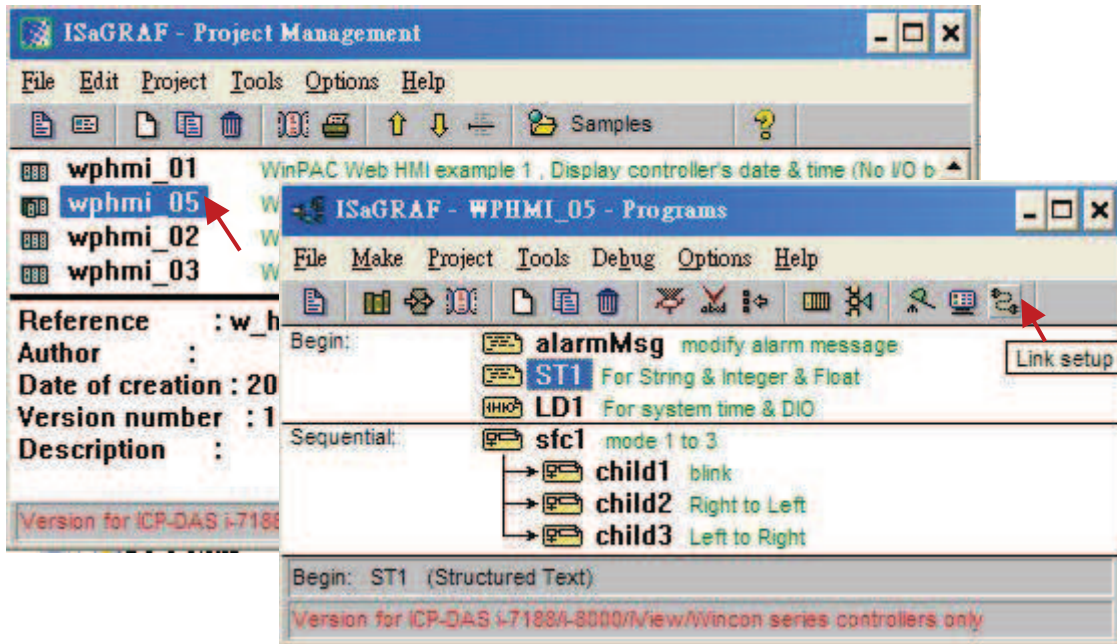
To restore an ISaGRAF project from a backed up file (*.pia), use the same method as above to access the "Archive - Projects" window.

1. Select the project name (backed up file) you want to restore from the "Archive" field.
2. Click on the "Restore" button. The ISaGRAF project will now be restored to the sub-directory you designated.

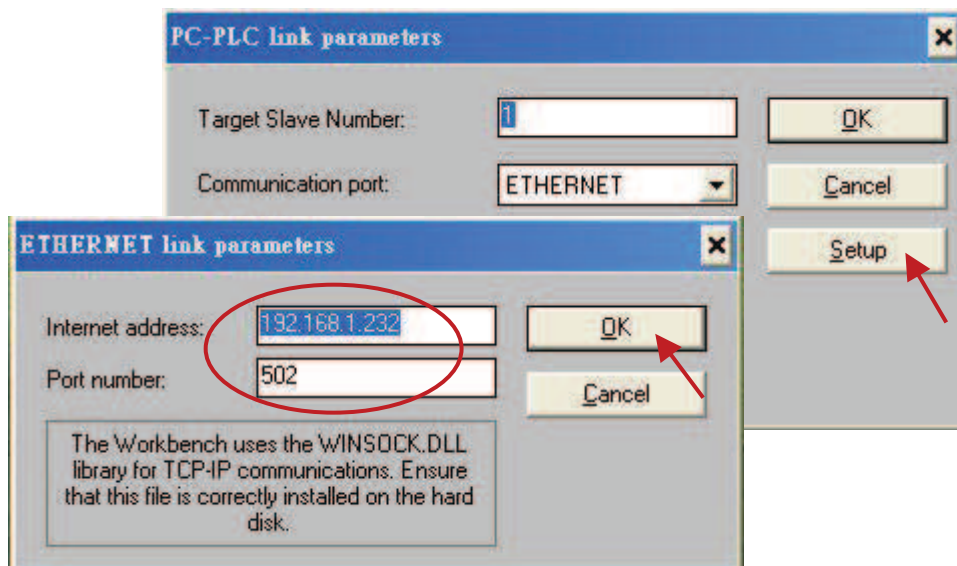


4.2.3.1 Steps to Download an ISaGRAF Project to the Controller:

Double click on the “wphmi_05” to get into the project. Then click on “Link setup”.

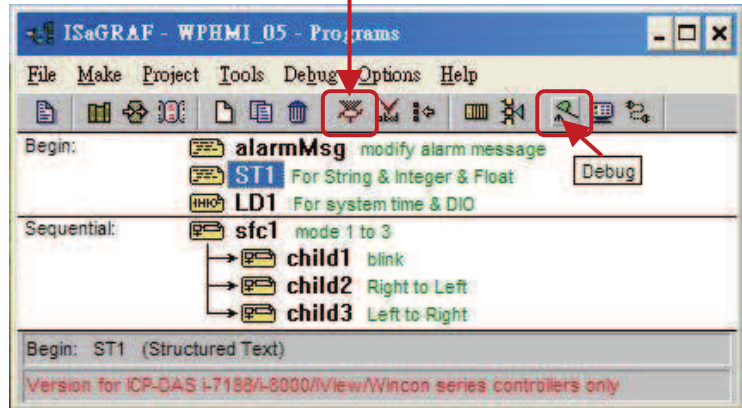


Click on “Setup” first and then entering the IP address of your controller. The port number should be 502.

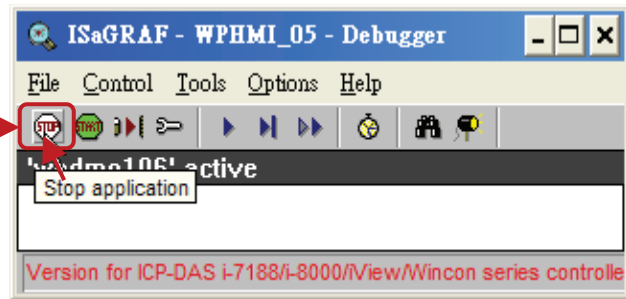


As figure below, to download “wphmi_05” project to the WinPAC-5xx7, click on “Debug”. If communication has been established, click on “stop” to stop the old project running in the WP-5xx7. Then click on “Download” to download it to the controller.

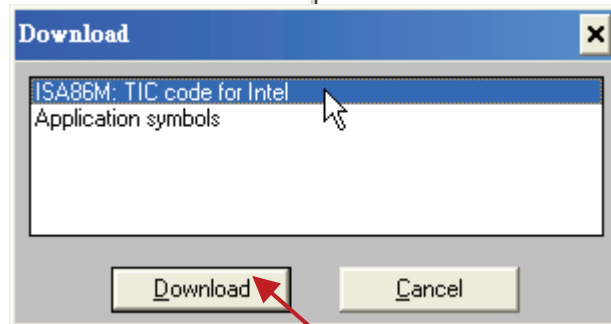
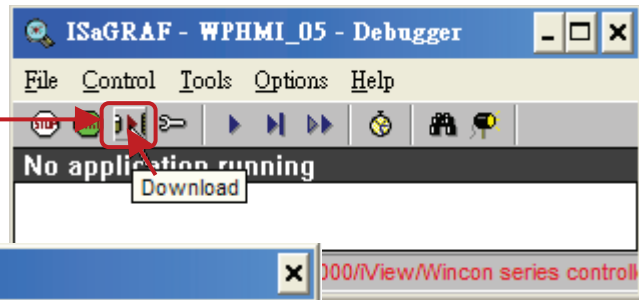
If the project is not compiled, click on "Make application code" button first, then click on the "Debug".



Stop the running project.



Download the new project.



4.2.4 Step 4 - Download Web Pages to the WinPAC

A. Please copy all files in the CD-ROM:

WinPAC-5xx7 CD: \napdos\isagraf\wp-5xx7\wp_webhmi_demo\wphmi_05\ *.*
to the WinPAC-5xx7's \Micro_SD\Temp\HTTP\WebHMI\

wphmi_05 demo need one XW107 in its slot 0. If you don't have the XW107 (8 IN & 8 OUT board), you may download "wphmi_01"

B. Since the Web Pages are modified or new copied, please run "rs_wphmi.exe" to reset the Web server.
The "rs_wphmi.exe" must be run every time when user has modified any file in the WP-5xx7's \Micro_SD\Temp\HTTP\WebHMI



4.2.5 Step 5 - Show Time

Please run Internet Explorer (Rev. 6.0 or higher), key in the IP address of your WinPAC-5xx7.
For example: 192.168.1.232 or <http://192.168.1.232>

