

Appendix B Upgrade WinPAC's ISaGRAF Driver to Newer Version

Note:

If you have purchased WP-5xx7, the ISaGRAF Driver is already installed with license when shipping out. You don't need to install it. However if you want to upgrade to newer version, you may upgrade it by yourself.

The WinPAC ISaGRAF driver can be obtained in the WinPAC-5xx7 CD-ROM:

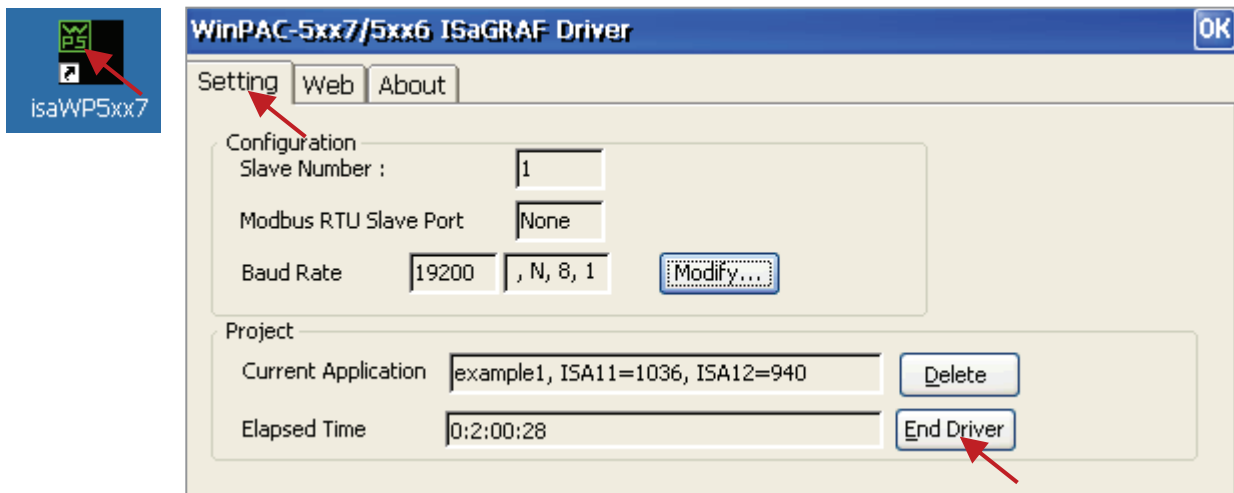
`\napdos\isagraf\wp-5xx7\driver\<version Number>`

EX: version 1.01 is located at `\napdos\isagraf\wp-5xx7\driver\1.01\`

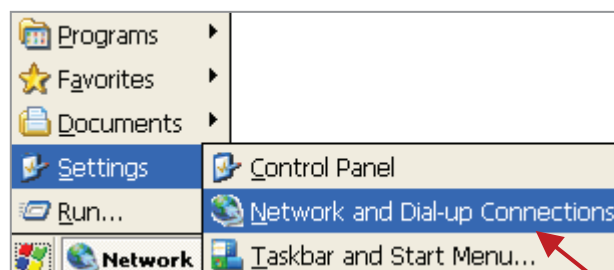
Or download it from

<http://www.icpdas.com/products/PAC/i-8000/isagraf.htm> > Driver

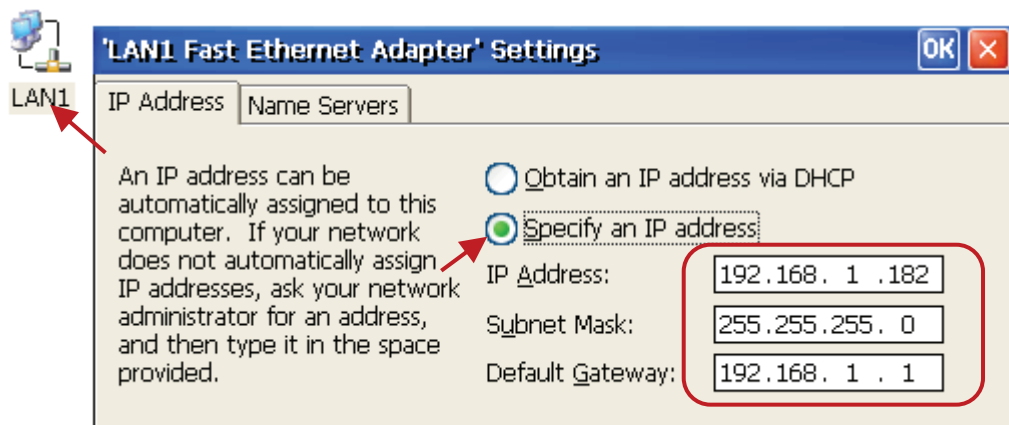
1. If your WinPAC is WP-5xx7/WP-5xx6, please stop "WinPAC ISaGRAF Driver" first. (Click on "End Driver" button to stop it.) However, if it is WP-5xx1/5xx9 (WinPAC without ISaGRAF license), please goto step 2.



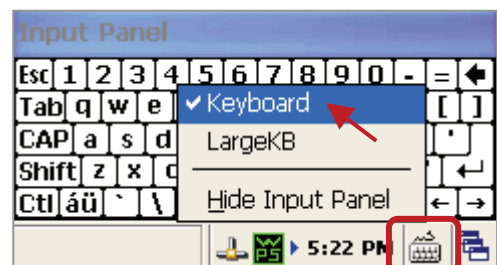
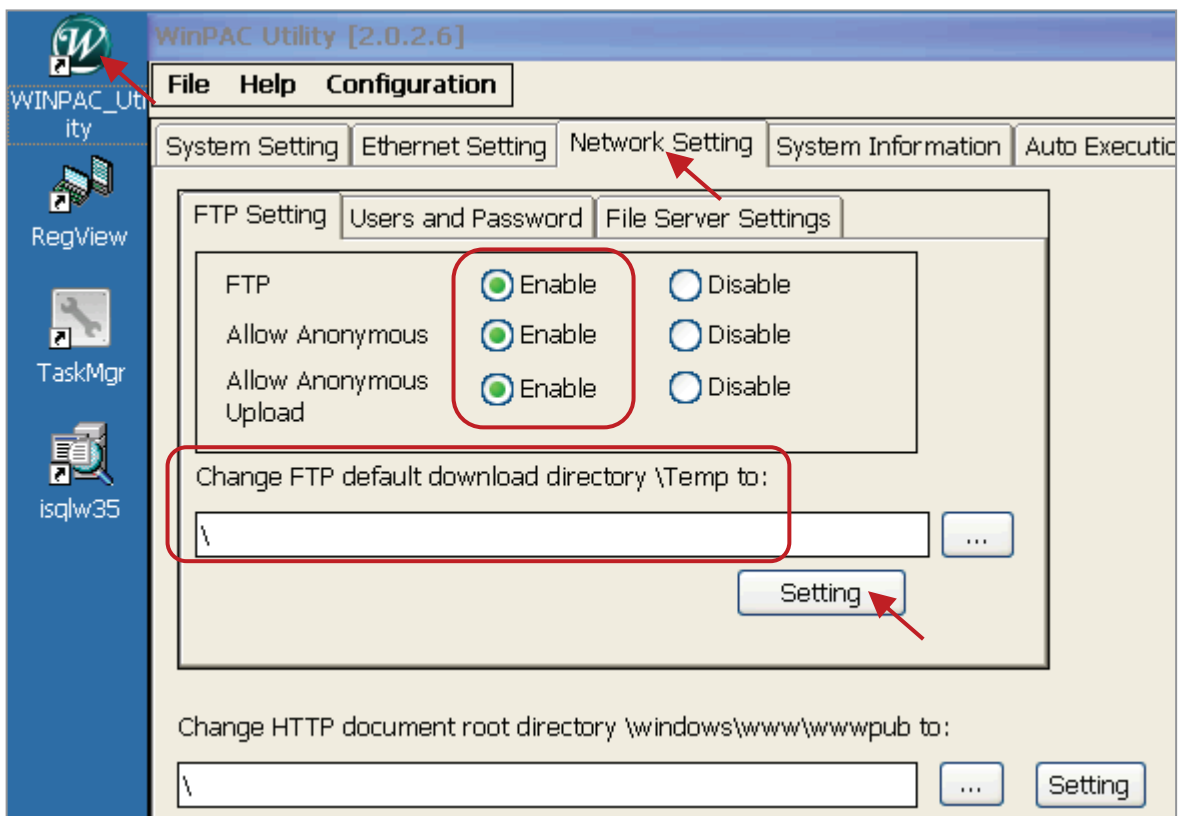
2. Set up WinPAC's IP, Mask, FTP directory & Auto-execute.
 - A. Please create a folder "ISaGRAF" inside "\Micro_SD\" folder in your WinPAC controller. Then it will be `\Micro_SD\ISaGRAF\`
 - B. Please run "Start" – "Setting" – "Network and Dial-up Connections" on the WinPAC.



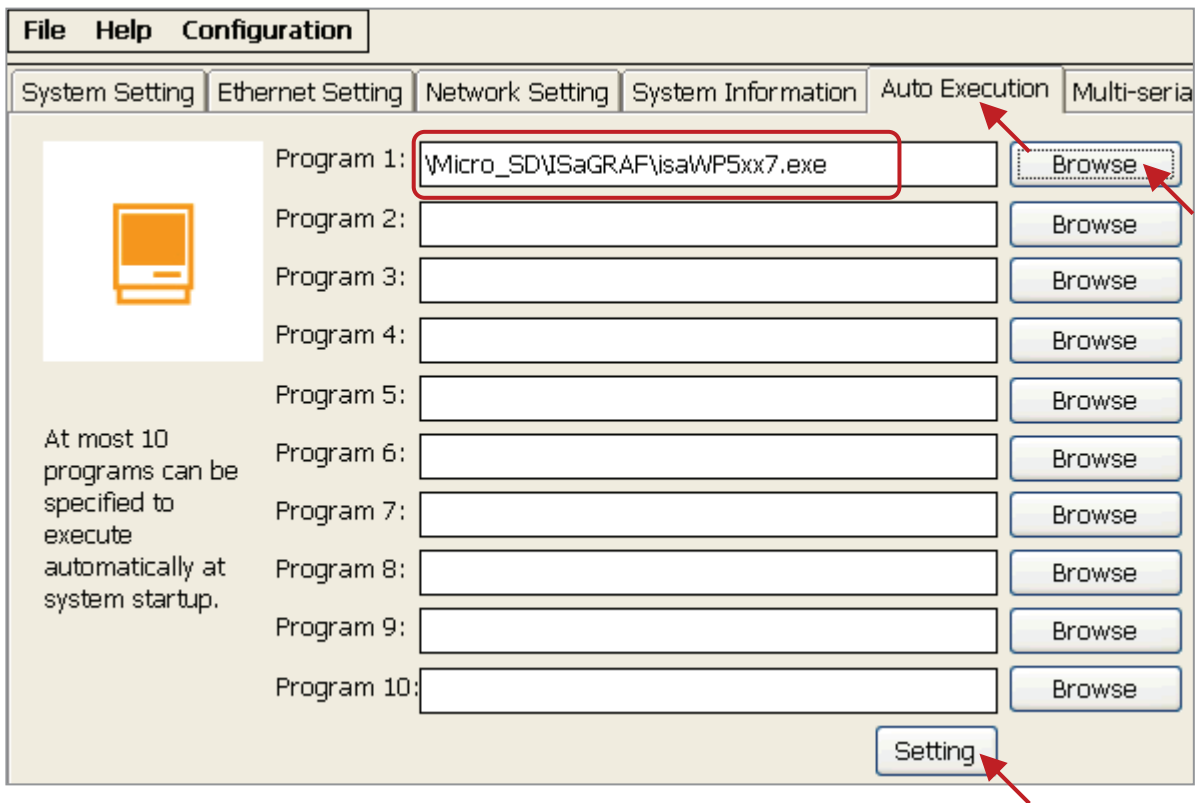
Then click on “LAN1” and “LAN2”. Set your WinPAC’s IP address & its Subnet Mask.
 (Please always set as Fixed IP for ISaGRAF application, No DHCP)



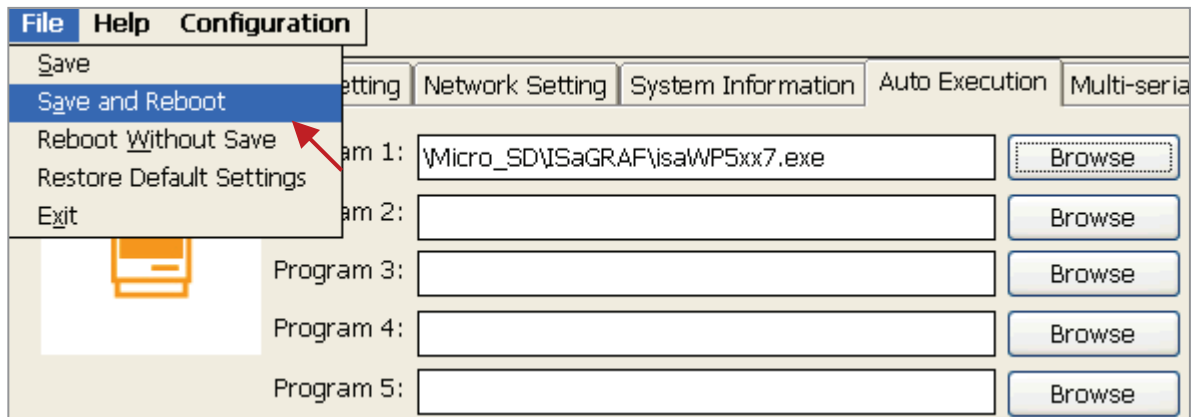
- C. Please run “Start” – “Programs” – “WinPAC Utility”. Set FTP directory to the root directory “\”. Then check all three ftp options as “Enable”. Remember to click on “Setting”. Then click on “Auto Execution” to do the next step.



- D. Please click on “Auto Execution” tab and then click on “Browse” to select or type “\Micro_SD\ISaGRAF\isaWP5xx7.exe”, then click on “Setting”.



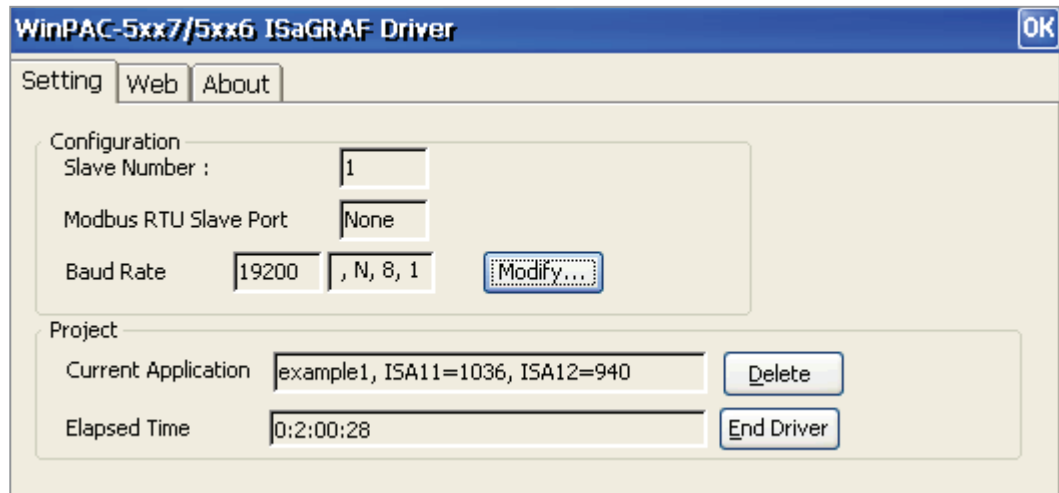
- E. Run “Save and Reboot” to store the setting in step A thru. D and then it will auto-reboot the WinPAC once.



3. After the WinPAC reboot successfully, please stop the ISaGRAF driver again. (The original WP-5xx1 / 5xx9 doesn't have the ISaGRAF driver running, only the WP-5xx7/5xx6 have it)

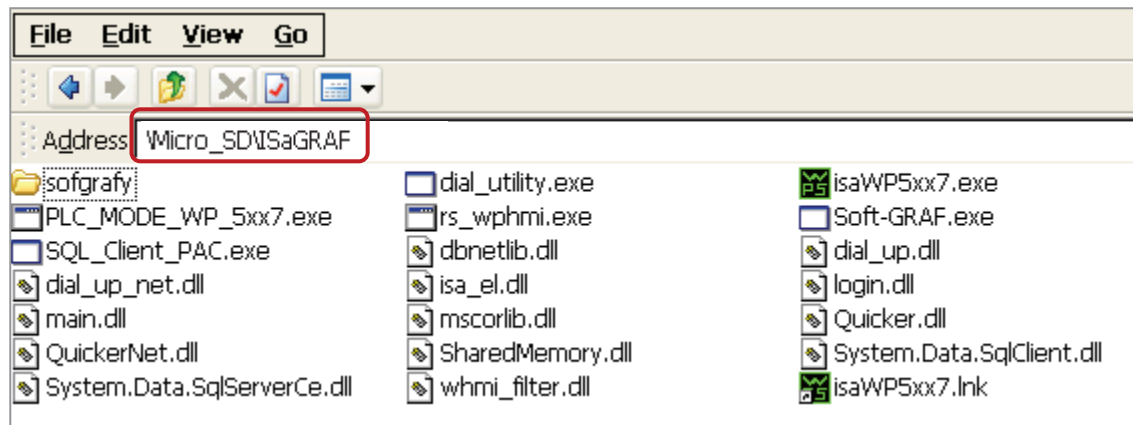
Note:

If the ISaGRAF driver is still running, the files copied are failed even your eyes tell you it is successful.



Then unzip the downloaded file (for example, "wp-5xx7-1.01.zip") and copy all files in the sub-directory with a version number (for example, all files in the sub-directory "1.01") into the path - "\Micro_SD\ISaGRAF\" of the WP-5xx7 via FTP or USB disk. And then re-cycle your WinPAC's power.

(Note: Files shown in the below figure may be different depending on its driver version.)



You may use PC's ftp utility to download these files.

Please open Internet browser and then type in <ftp://<IP address>>, for ex. [Ftp://192.168.1.178](ftp://192.168.1.178) , browse it to the \Micro_SD\ISaGRAF\. Then copy all of them & past it.

Then remember to re-cycle your WinPAC's power again. After it re-boot again, it will have the new ISaGRAF driver running. You can check if the version is correct.

