

WISE Rule Utility

User Guide

[Version 2.5]



ICP DAS CO., LTD.

泓格科技股份有限公司

Warning

ICP DAS Inc., LTD. assumes no liability for damages consequent to the use of this product. ICP DAS Inc., LTD. reserves the right to change this manual at any time without notice. The information furnished by ICP DAS Inc. is believed to be accurate and reliable. However, no responsibility is assumed by ICP DAS Inc., LTD. for its use, or for any infringements of patents or other rights of third parties resulting from its use.

Copyright and Trademark Information

© Copyright 2009 by ICP DAS Inc., LTD. All rights reserved worldwide.

Trademark of Other Companies

The names used for identification only maybe registered trademarks of their respective companies.

License

The user can use, modify and backup this software on a single machine. The user may not reproduce, transfer or distribute this software, or any copy, in whole or in part.

Table of Contents

1	Overview.....	4
2	Before Using Rule Utility.....	5
3	Search WISE module.....	7
4	Import WISE Rule from a WISE module to PC.....	8
5	Export WISE Rule from PC to a WISE module.....	11
6	Restore WISE Module.....	14

1 Overview

WISE Rule Utility is an easy-to-use software tool specially designed for WISE module, it enables users to perform the following operations:

- Import IF-THEN-ELSE Rule file from a remote WISE module to PC
- Export IF-THEN-ELSE Rule file from PC to a remote WISE module

By WISE Rule Utility, the user can easily retrieve the IF-THEN-ELSE Rule file from a specific WISE module and this file can be copied to multiple WISE modules that require the same Rule file, therefore, there is no need to set up rules for each WISE module individually, and save the effort of rule setting for each WISE module.

2 Before Using Rule Utility

Before the start of network connection between WISE Rule Utility and WISE module, please verify the Switch position of WISE module first.

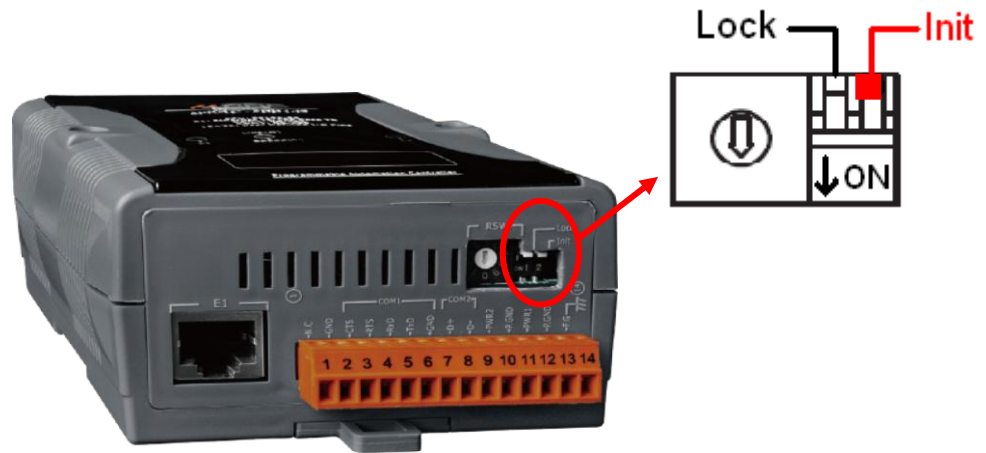
- WISE-71xx & WISE-790x : Please make sure the Init/Normal switch on the module has been switched to “Normal” position. The Init/Normal switch position is shown as below:



- WISE-4000 : Please make sure the Init/Run switch on the module has been switched to “Run” position. The Init/Run switch position is shown as below:

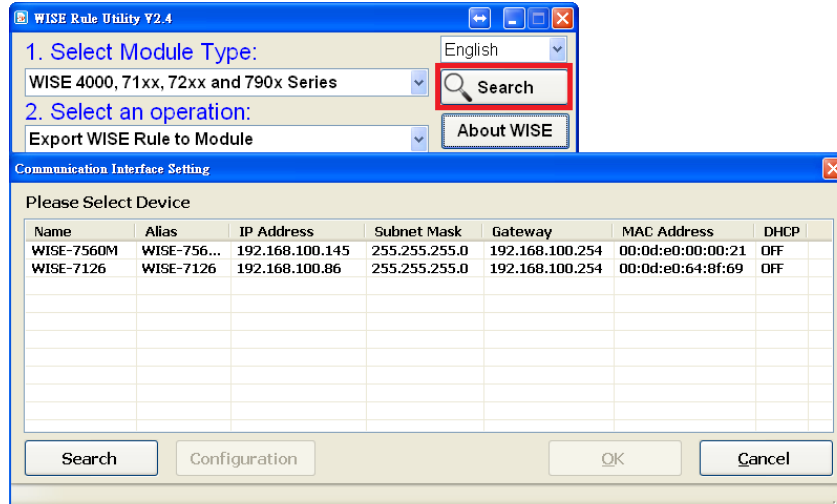


- WISE-580x: Please make sure the Init switch on the module has been switched to “OFF” position. The Init switch position is shown as below:



3 Search WISE module

Search the available WISE modules and select the WISE module from the module list.



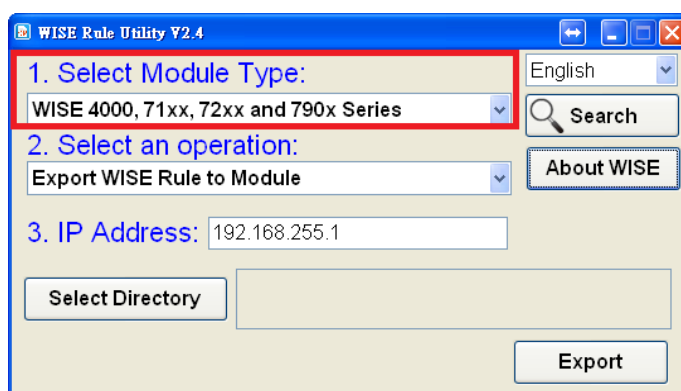
4 Import WISE Rule from a WISE module to PC

STEP 1: Select WISE module type

Select the WISE module type from the dropdown list. Currently there are three types for selection as below:

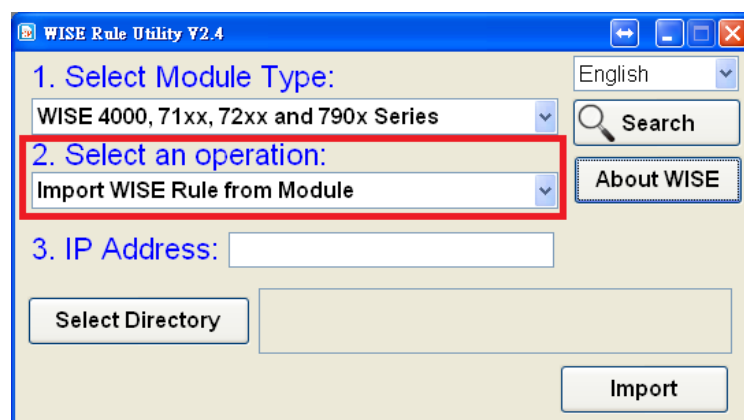
- a. WISE-4000,71xx,72xx and 790x Series
- b. WISE-580x
- c. WISE-75xx

Please make sure the WISE module type you select must be consistent with the WISE module which Utility will connect.



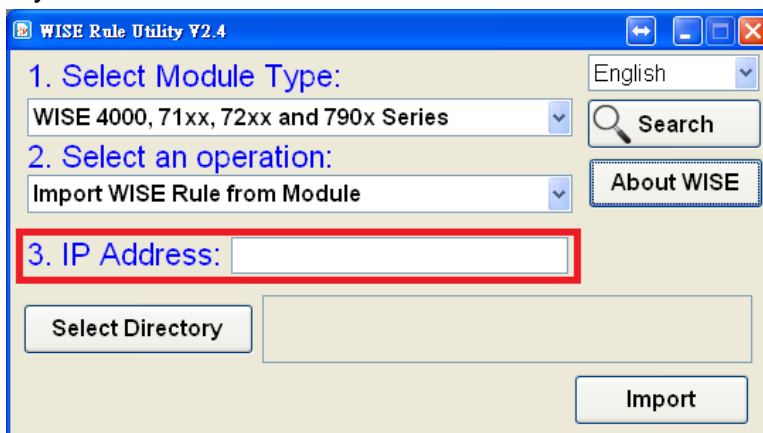
STEP 2: Select an operation

Select the operation "Import WISE Rule from Module" from the dropdown list.



STEP 3: Input IP Address

Input your WISE module IP Address in the text box.

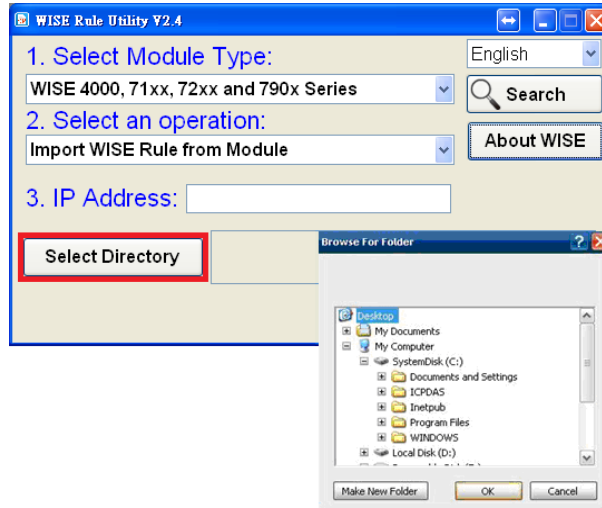


PS: If the port of webpage is modified, please add the port after the IP address, for example: 192.168.100.61:250.

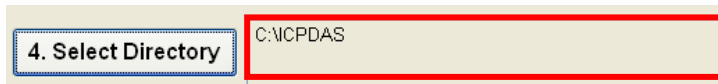


STEP 4: Select the Directory path

1. Click the **Select Directory** button to bring up the Browse Folders window to select the location for WISE rule file saving operation.

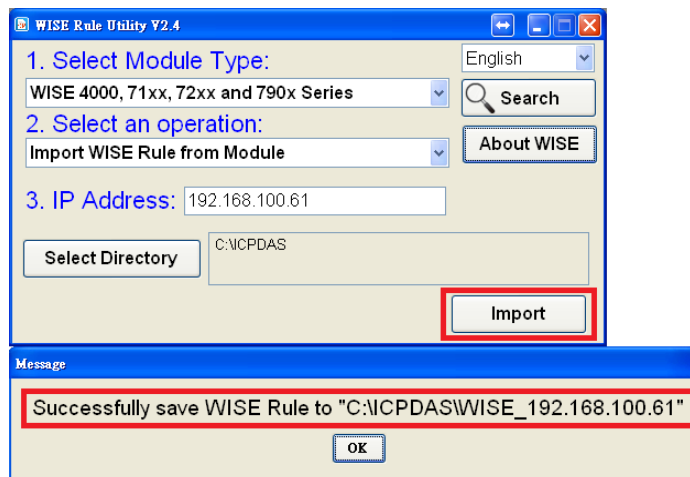


2. The selected directory path will be shown in the middle of the utility window.



STEP 5: Import WISE Rule

Click the **Import** button to execute the operation. Then WISE Rule Utility will automatically create a folder named **WISE_[IP Address]** under the specified directory path; and WISE Rule files will be saved to this folder.



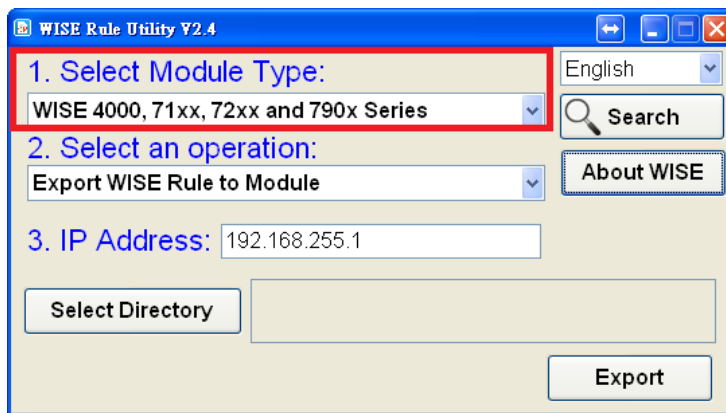
5 Export WISE Rule from PC to a WISE module

STEP 1: Select WISE module type

Select the WISE module type from the dropdown list. Currently there are two types for selection as below:

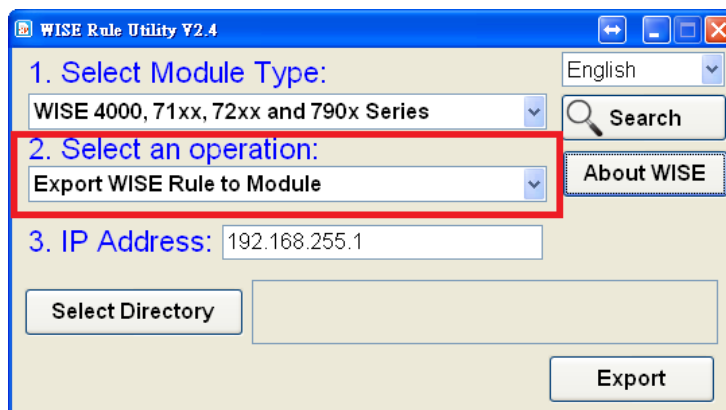
- a. WISE-4000,71xx,72xx and 790x Series
- b. WISE-580x
- c. WISE-75xx

Please make sure the WISE module type you select must be consistent with the WISE module which Utility will connect.



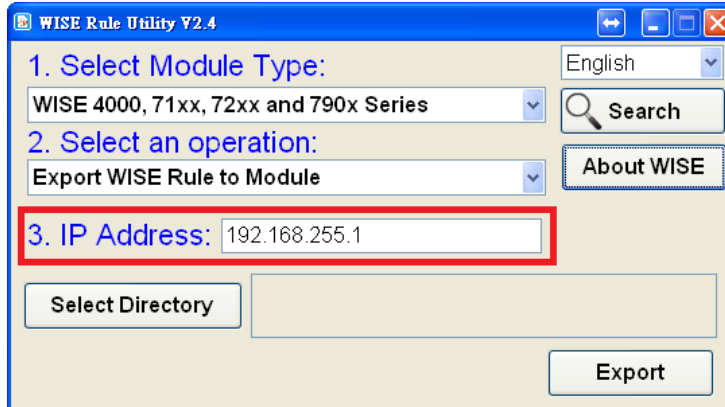
STEP 2: Select an operation

Select the operation "Export WISE Rule to Module" from the dropdown list.



STEP 3: Input IP Address

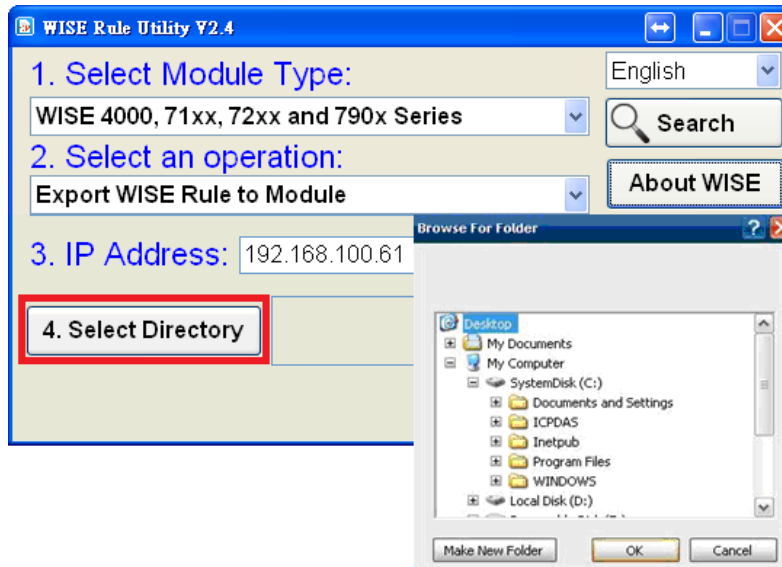
Input your WISE module IP Address in the text box.



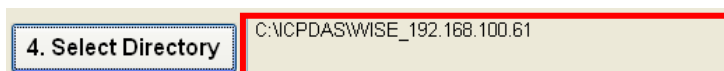
STEP 4: Select the Directory path

1. Click the **Select Directory** button to bring up the Browse Folders window to select the location of WISE rule file.

Please note: this directory must contain the WISE rule file.

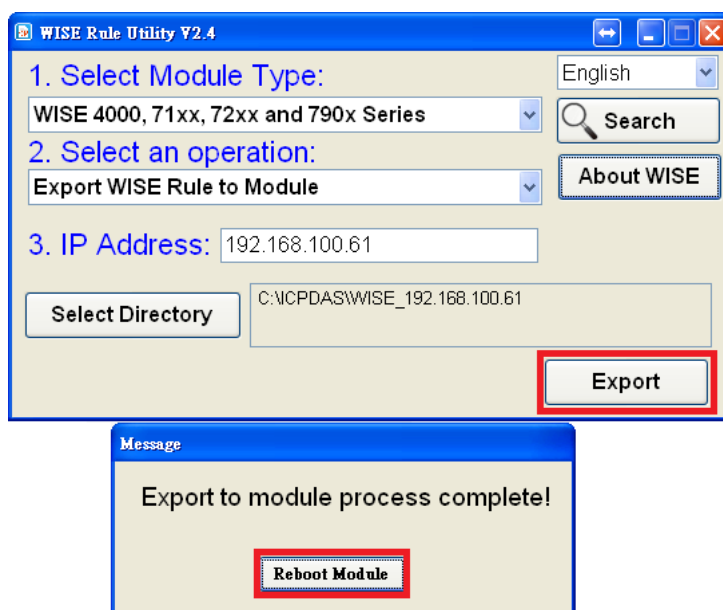


2. The selected directory path will be shown in the middle of the utility window.



STEP 5: Export WISE Rule

Click the **Export** button to execute the operation. Then WISE Rule Utility will automatically upload WISE Rule files to the WISE module. Click the **Reboot Module** button, then WISE module will reboot and execute the new Rule file.

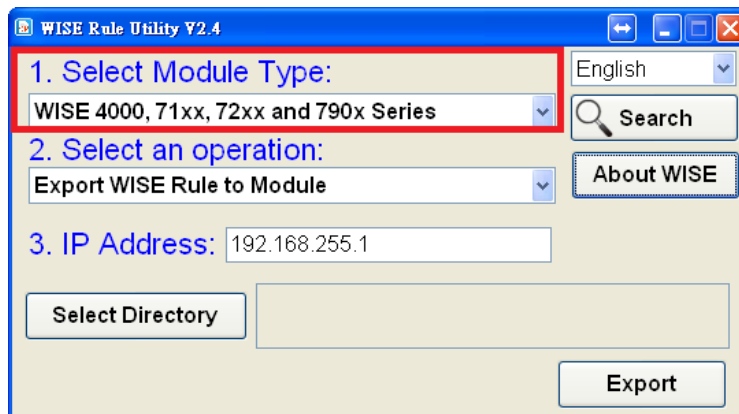


PS: The Rule file is exported by connecting to the port 10000 that was default set on WISE controller, if this port can't be accessed; then the Rule file can't be exported successfully. Please pay careful attention to this issue.

6 Restore WISE Module

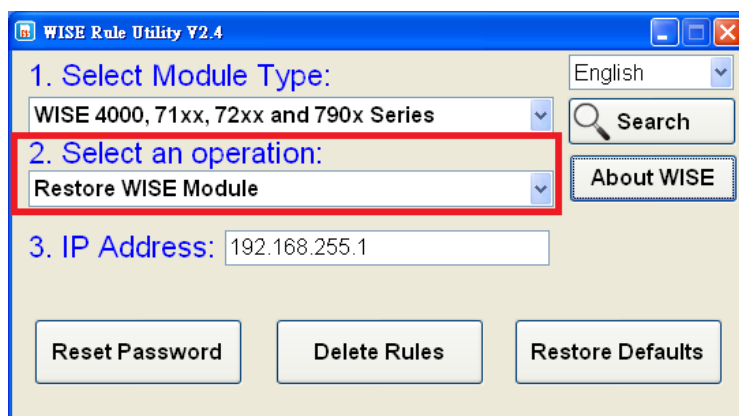
STEP 1: Select WISE module type

Select the WISE module type from the dropdown list. Currently only WISE-71xx, WISE-72xx, and WISE-790x modules support the restore function.



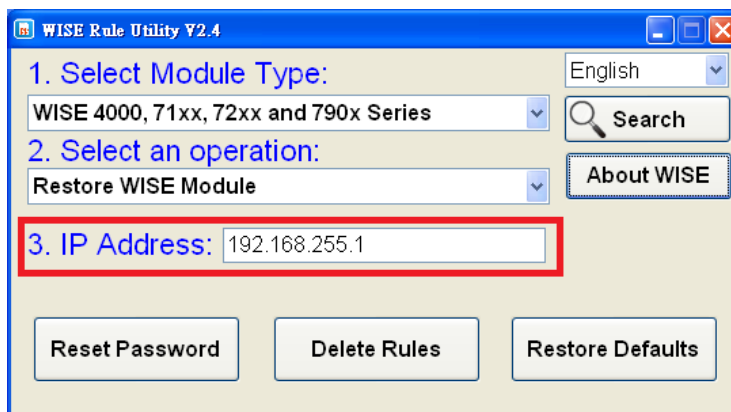
STEP 2: Select an operation

Select the operation "Restore WISE Module" from the dropdown list.



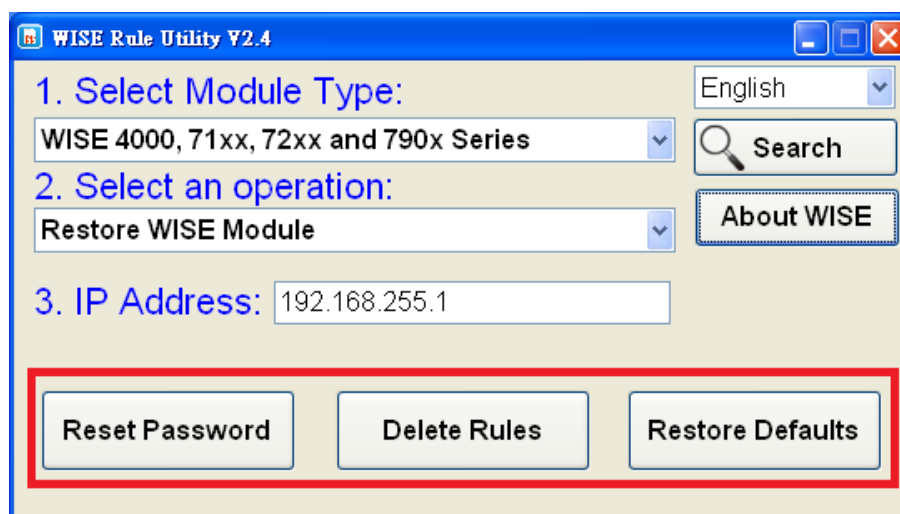
STEP 3: Input IP Address

Input your WISE module IP Address in the text box.



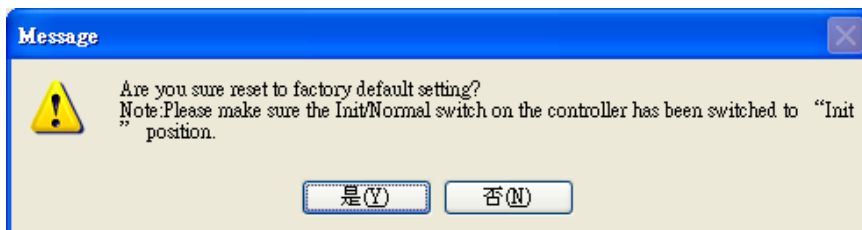
STEP 4: Select Restore Function

Select the restore function.



STEP 5: Make sure the Init/Normal switch

Before perform the restore function, switch the Init/Normal switch on the controller to "Init" position.



STEP 6: Restore WISE Module Completed

Switch the Init/Normal switch on the controller to "Normal" position and reboot the WISE module to complete the restore procedure.

