

Classification	System and Application FAQ on WinCE PAC				No.	2-010-00	
Author	Eric_Shiu	Version	1.0.0	Date	2018/04/27	Page	1/2

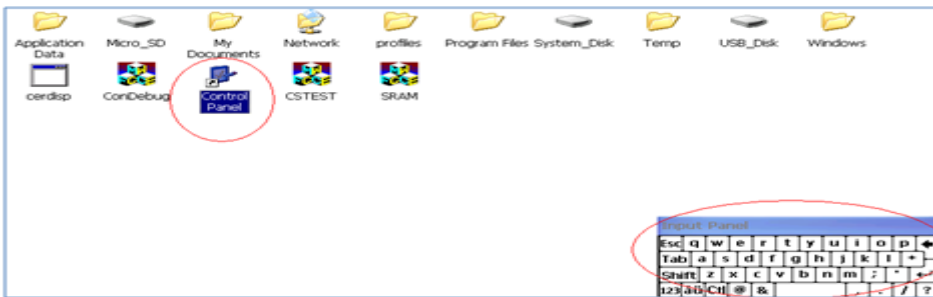
How to change the input Panel size

Applies to:

Platform	OS Version	PAC Utility Version
WinPAC	All Versions	All Versions
ViewPAC	All Versions	All Versions

To change the Input Panel size, perform the following steps:

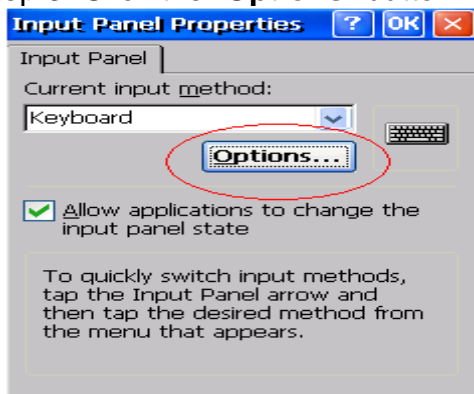
Step 1: Choose the Control Panel. Now the Panel size is large.



Step 2: Choose the Input Panel.

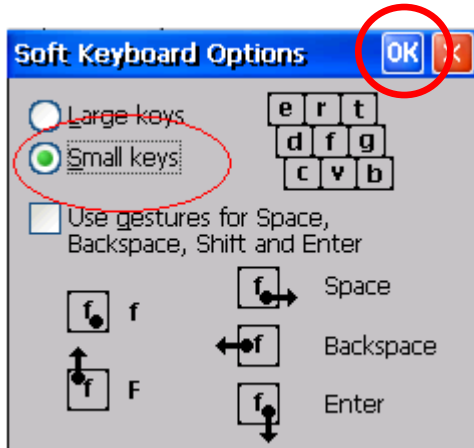


Step 3: Click the "Options" button.



Classification	System and Application FAQ on WinCE PAC				No.	2-010-00	
Author	Eric_Shiu	Version	1.0.0	Date	2018/04/27	Page	2/2

Step 4: Select Small keys and then click the “OK” button.



Step 5: After performing steps 1 to 4, you will see the size of the input panel become small.

