


Classification	System and Application FAQ on WinCE PAC				No.	1-004-02	
Author	Eric_Shiu	Version	1.0.1	Date	2018/4/27	Page	1/3

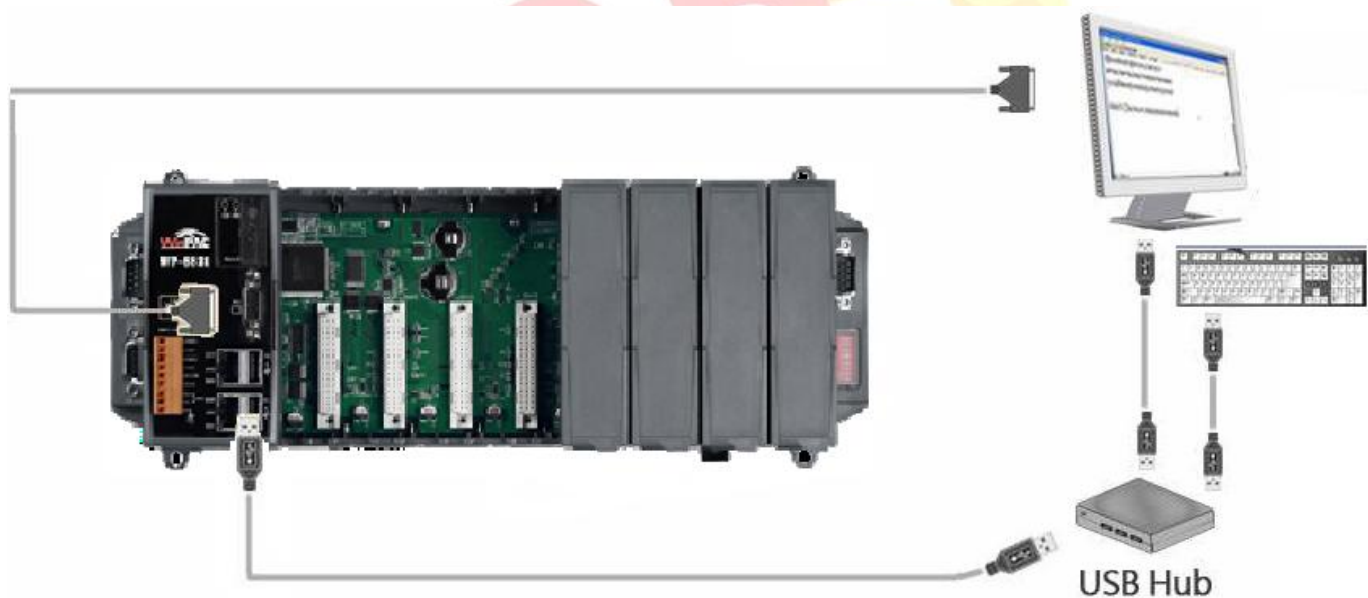
How to set up an ELO USB touch panel

Applies to:

<i>Platform</i>	<i>OS Version</i>	<i>PAC Utility Version</i>
<i>WinPAC</i>	<i>All Versions</i>	<i>All Versions</i>

Tips & Warnings

 *To use a touch panel and a keyboard at the same time on WP-8x2x, you need a USB hub to expand the single USB port of WP-8x2x into several.*



To use an ELO USB touch panel, perform the following steps:

Step 1: Locate the driver.

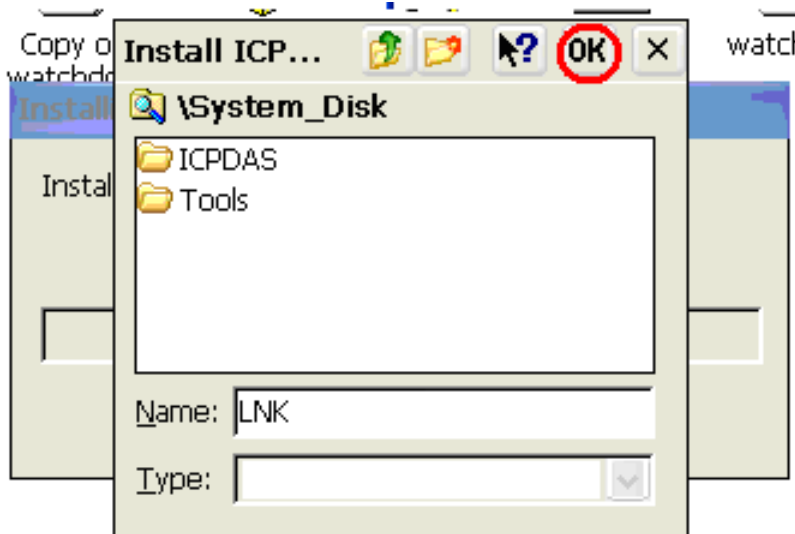
The **ELO_USB_TOUCH_V20100506.CAB** is located at

1. **WinPAC file path:** \System_Disk\External_device_driver\
2. CD: \Wp-5231\System_Disk\External_device_driver\
3. http://ftp.icpdas.com/pub/cd/winpac_am335x/wp-5231/system_disk/external_device_driver/

Classification	System and Application FAQ on WinCE PAC				No.	1-004-02	
Author	Eric_Shiu	Version	1.0.1	Date	2018/4/27	Page	2/3

Step 2: Install the driver.

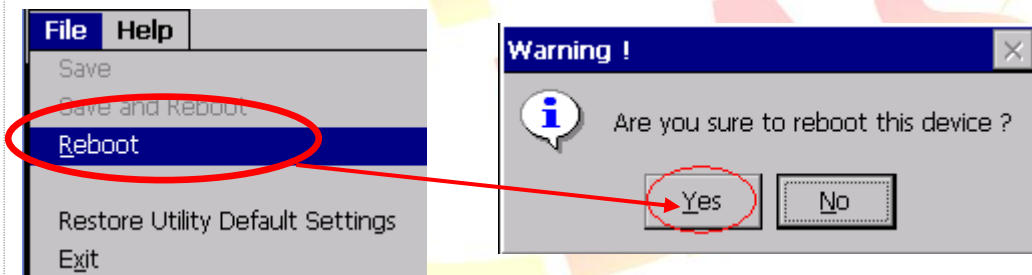
2.1. Double click the **ELO_USB_TOUCH_V20100506.CAB** file, and then click **“OK”**.



Step 3: Reboot your WinPAC.

3.1. Start the PAC utility on the desktop and click the **“File”** → **“Reboot”**.

3.2. Click the **“Yes”** button on the warning window and wait for reboot.



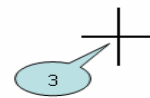
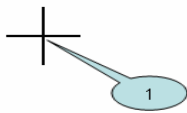
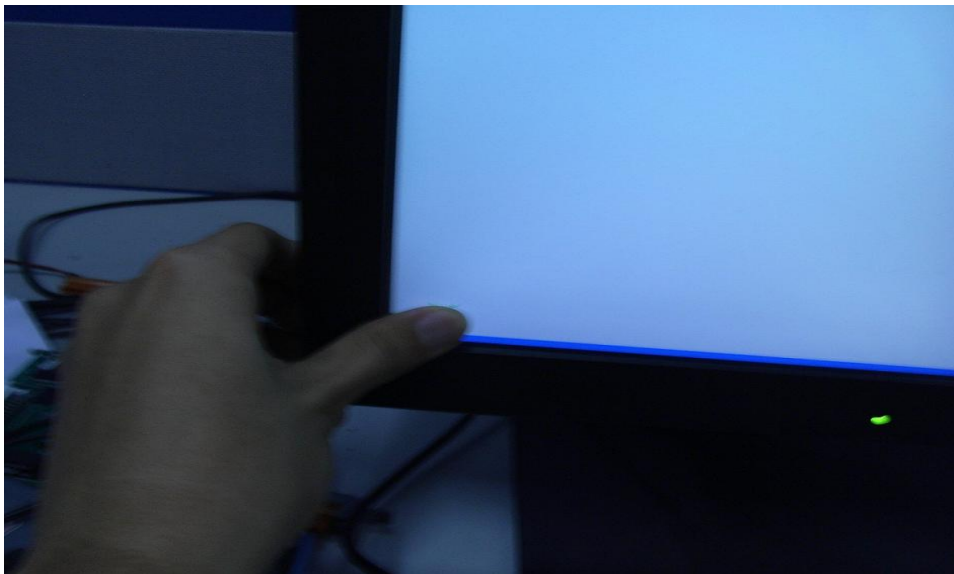
Step 4: Calibrate the touch panel.

4.1. After rebooting, click My Device → System_Disk → Drivers → USB_TOUCH → ELO → LNK → EloVa.

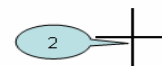


Classification	System and Application FAQ on WinCE PAC				No.	1-004-02	
Author	Eric_Shiu	Version	1.0.1	Date	2018/4/27	Page	3/3

4.2. Touch the “+” icons on the monitor one by one to perform the calibration process.



Touch targets from a position of normal use.



Step 5: Reboot WinPAC.

5.1. Start the PAC utility and click the “File” → “Reboot” menu option.

5.2. Click the “Yes” button and wait for reboot.

