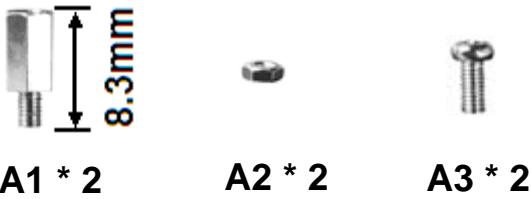


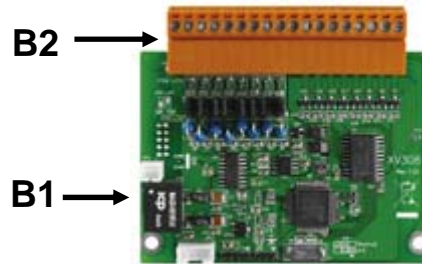
➤ What's in the shipping box?

A. Screws

- For assembly to VPD-132/
VPD-133/VPD-142/VPD-143 only

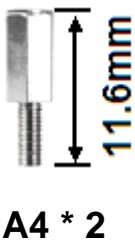


B. XV-board

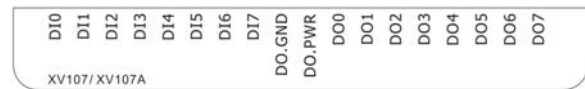


B1: XV-board
B2: Detachable Connector

- For assembly to WP-5231-CE7/
WP-5231M-CE7/
WP-5231PM-3GWA-CE7/
LP-5231/LP-5231M/
LP-5231PM-3GWA only



C. Pin Assignment Label



D. Quick Start



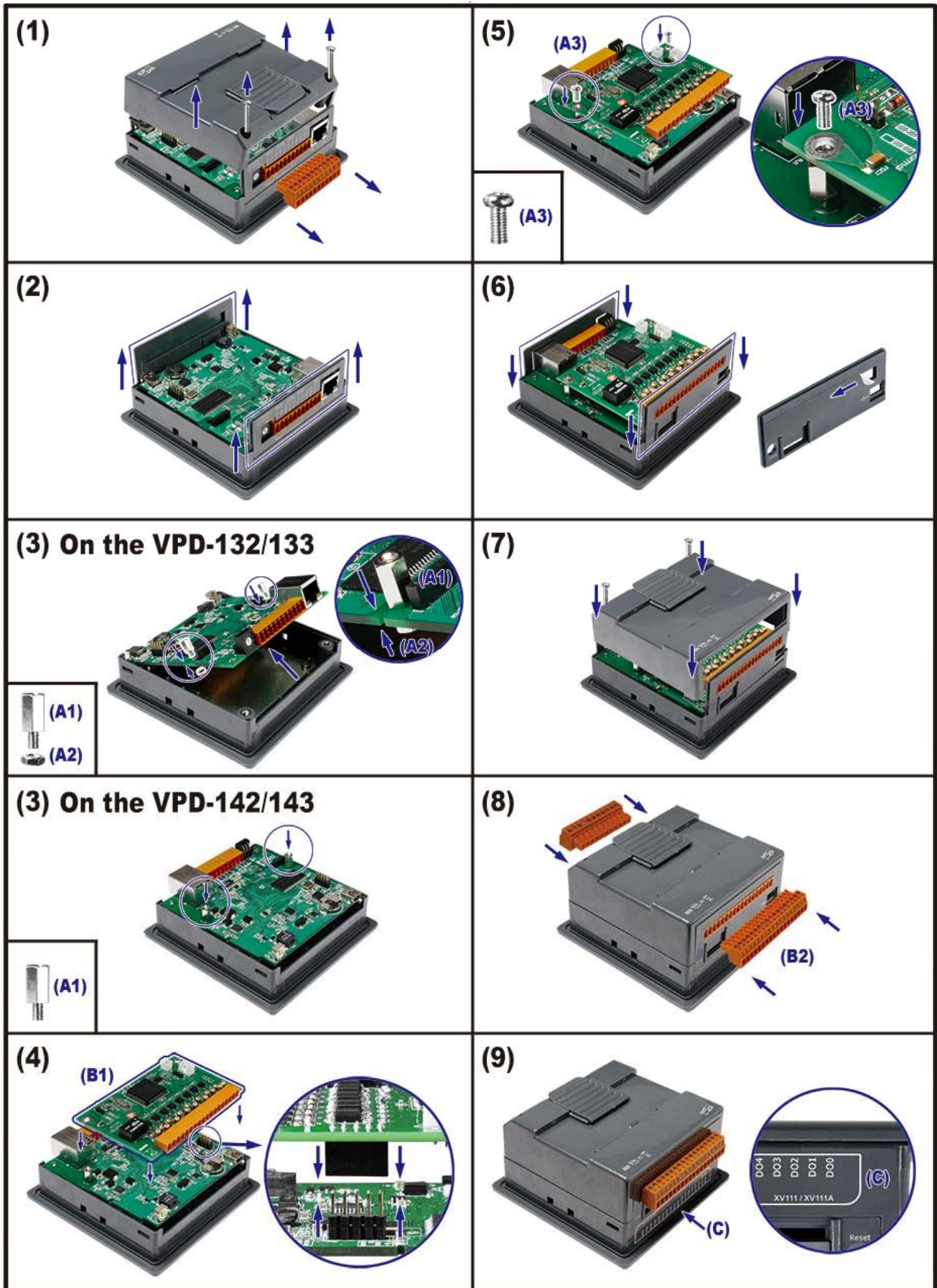
➤ Technical Support

- Product website

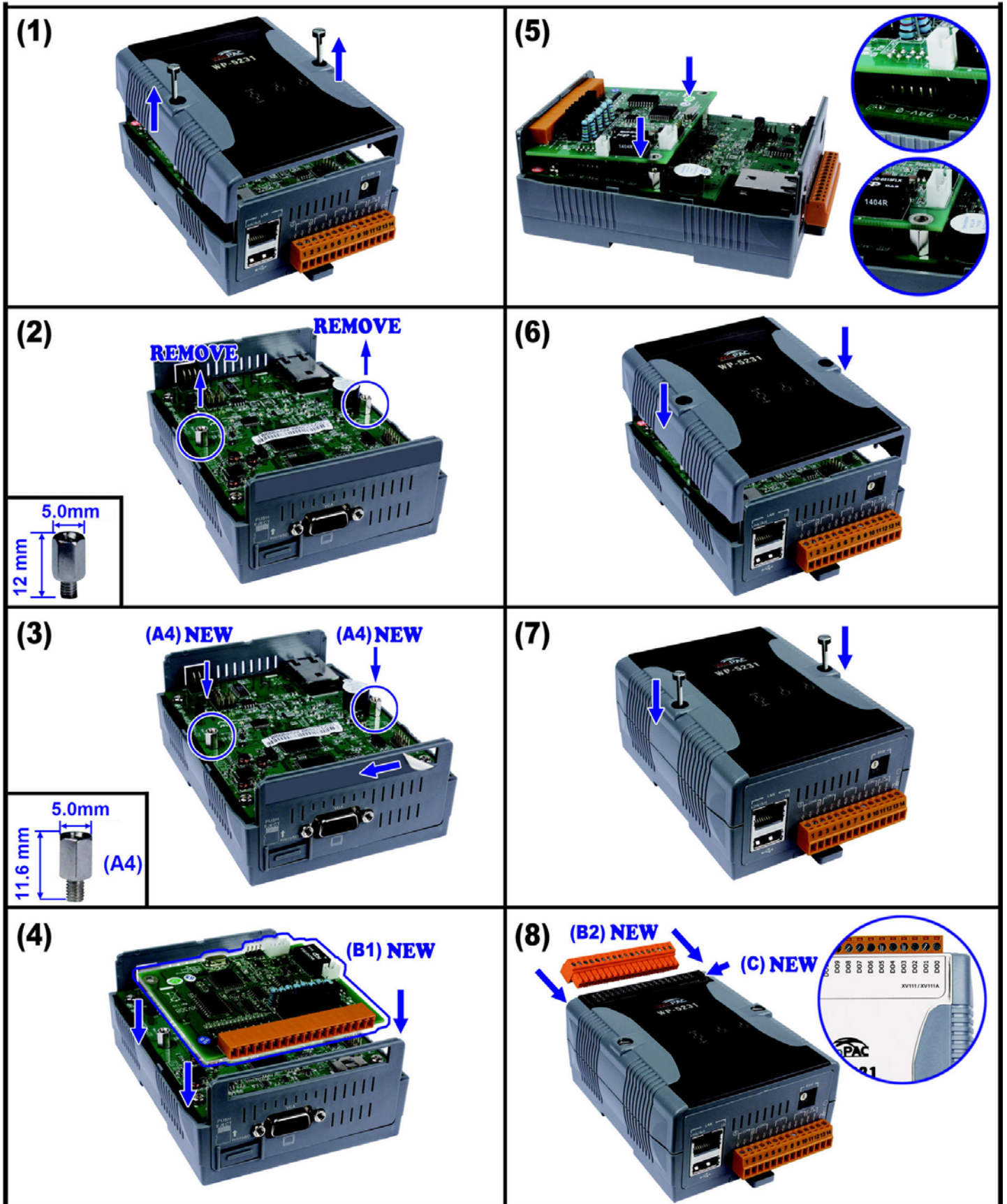
http://www.icpdas.com/root/product/solutions/hmi_touch_monitor/touchpad/xv-board_selection.html

- E-mail: service@icpdas.com

➤ **Assembly Chart for VPD-132/VPD-133/VPD-142/VPD-143**



➤ Assembly Chart for WP-5231-CE7/LP-5231



➤ **Assembly Chart for WP-5231M-CE7/WP-5231PM-3GWA-CE7/
LP-5231M/LP-5231PM-3GWA**

