

|                |   |         |       |      |            |          |     |
|----------------|---|---------|-------|------|------------|----------|-----|
| Classification | System and Application FAQ on WinCE PAC |         |       |      | No.        | 2-022-00 |     |
| Author         | Eric_Shiu                               | Version | 1.0.0 | Date | 2018/04/27 | Page     | 1/4 |

## How to configure the File (SMB) Server

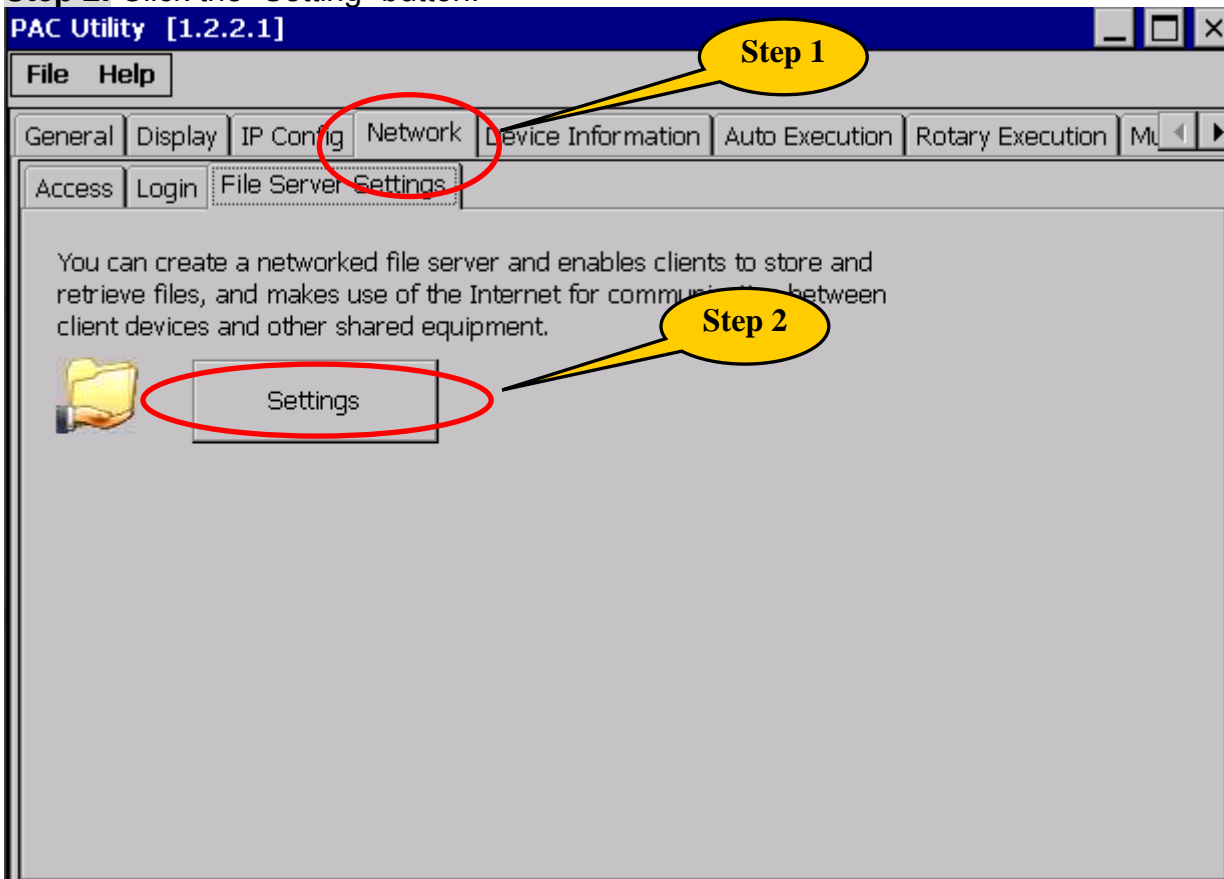
Applies to:

| Platform | OS Version   | PAC Utility Version |
|----------|--------------|---------------------|
| WinPAC   | All Versions | All Versions        |
| ViewPAC  | All Versions | All Versions        |

Please perform the follow steps to configure the File(SMB) server.

**Step 1:** Execute the PAC utility->“Network Setting”->File Server Settings tab.

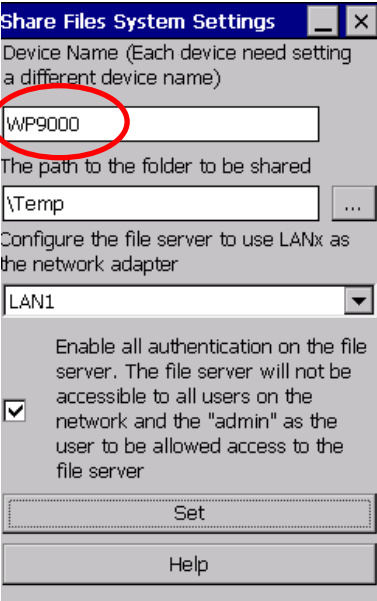
**Step 2:** Click the “Setting” button.



|                |   |         |       |      |            |          |     |
|----------------|---|---------|-------|------|------------|----------|-----|
| Classification | System and Application FAQ on WinCE PAC |         |       |      | No.        | 2-022-00 |     |
| Author         | Eric_Shiu                               | Version | 1.0.0 | Date | 2018/04/27 | Page     | 2/4 |

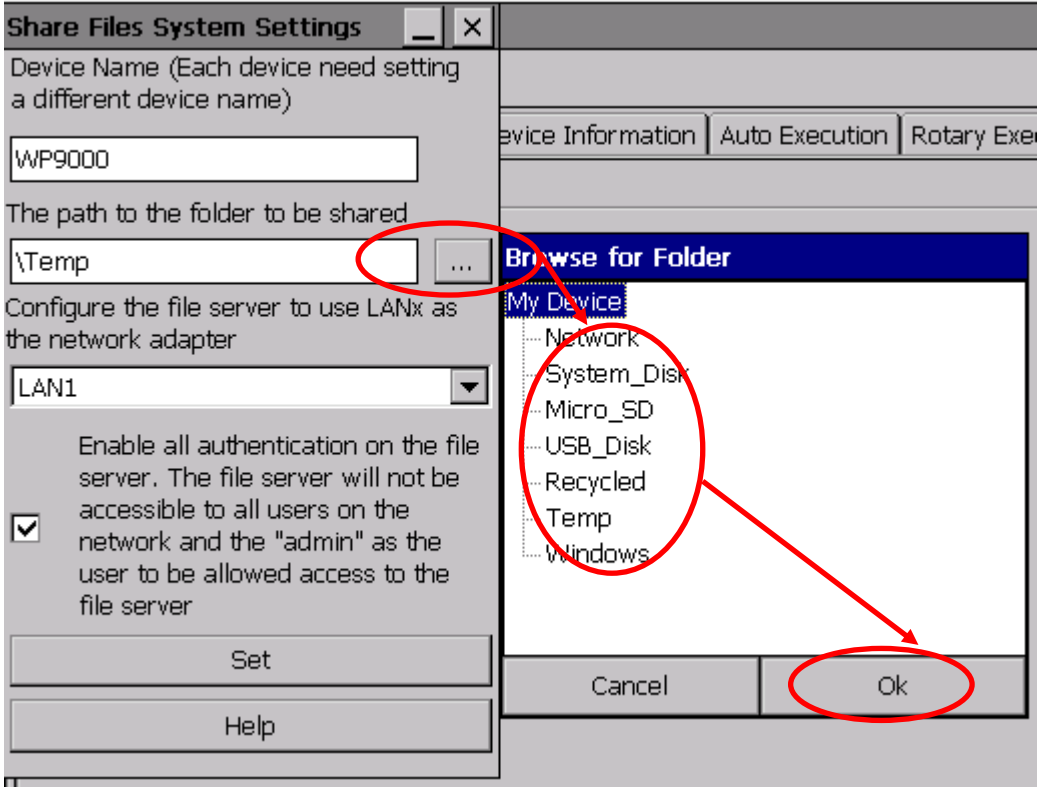
**Step 3:** Enter the device name.

**Note:** If the LAN network contains several devices, ensure that different device names are set for each device.



**Step 4:** Specify the share folder then click OK.

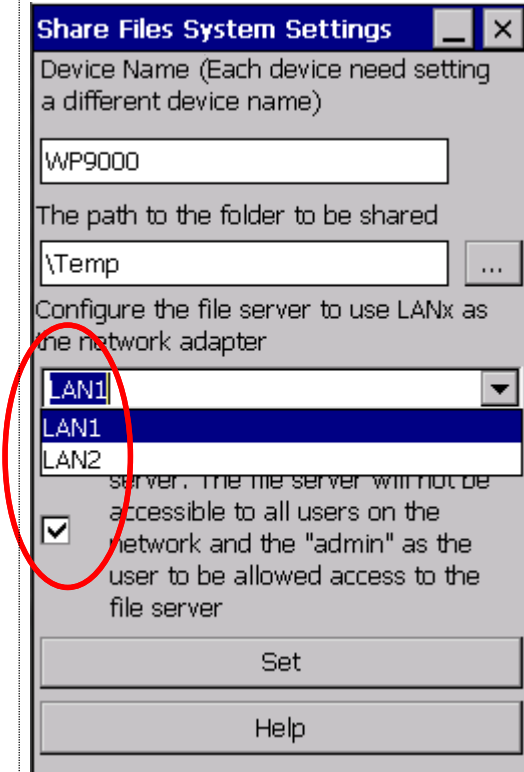
**Note:** The name of the share folder must not contain any reserved characters.



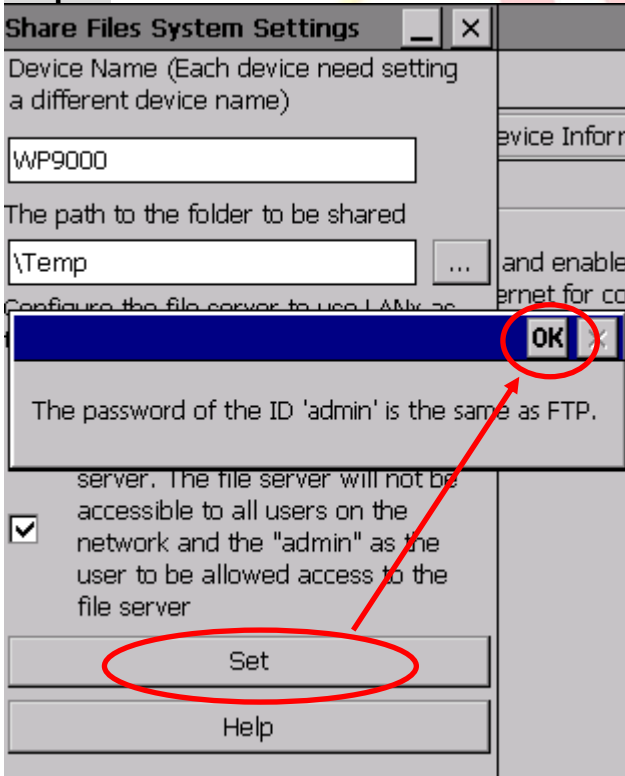
|                |   |         |       |      |            |          |     |
|----------------|---|---------|-------|------|------------|----------|-----|
| Classification | System and Application FAQ on WinCE PAC |         |       |      | No.        | 2-022-00 |     |
| Author         | Eric_Shiu                               | Version | 1.0.0 | Date | 2018/04/27 | Page     | 3/4 |

**Step 5:** Choose the LAN adapter to be used as the gateway for the file server. This will allow all users to connect to the file server.

**Note:** The file server and the FTP server use the same ID and password.



**Step 6:** Click the "Set" button.



|                |   |         |       |      |            |          |     |
|----------------|---|---------|-------|------|------------|----------|-----|
| Classification | System and Application FAQ on WinCE PAC |         |       |      | No.        | 2-022-00 |     |
| Author         | Eric_Shiu                               | Version | 1.0.0 | Date | 2018/04/27 | Page     | 4/4 |

**Step 7:** Enter the “IP address for LAN1” of the device or enter “\device name” (e.g., WP8x4x01) in the address bar, then enter the ID and password to connect to the file server.

**Note:** If you can not use the “IP address for LAN1” to connect with the network share folder, you can use the “\device name” to connect to the file server.

