

Classification	System and Application FAQ on WinCE PAC				No.	1-005-07	
Author	Eric_Shiu	Version	1.0.1	Date	2018/4/27	Page	1/2

How to calibrate a ViewPAC touch panel

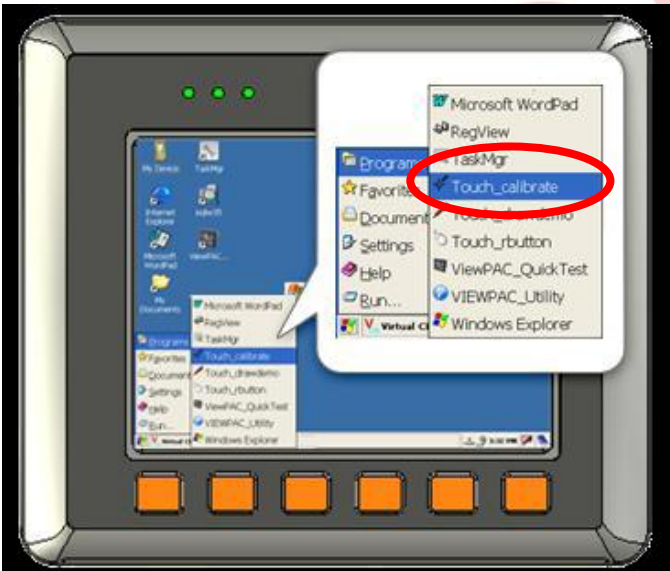
Applies to:

Platform	OS version	WinPAC/ViewPAC utility version
ViewPAC	All versions	All versions

N/A: Not applicable to this platform and OS.

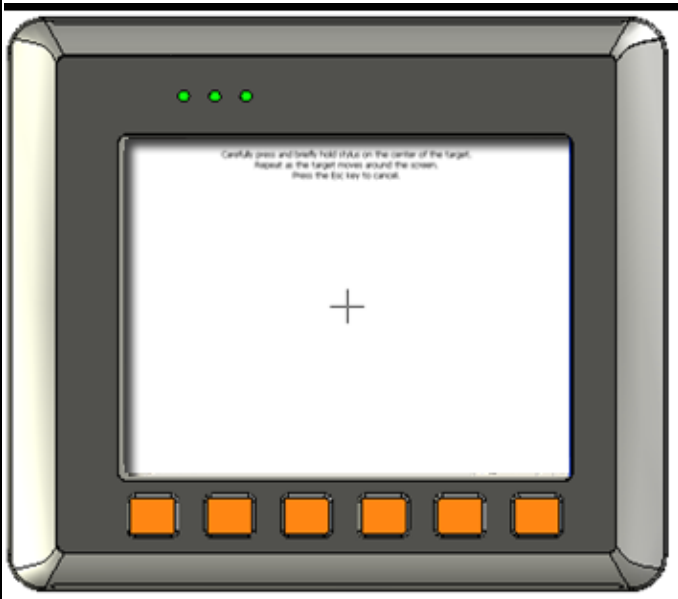
The touch screen has function with the default calibration. It is necessary to calibrate your screen when it works not precise.

- 1) Run the 05 Point Calibration.exe on the desktop.



Classification	System and Application FAQ on WinCE PAC				No.	1-005-07	
Author	Eric_Shiu	Version	1.0.1	Date	2018/4/27	Page	2/2

3) Tap the touch pen in the exact center of each of the calibration markers (+)



- 4) Touch the panel to finish the calibration program
- 5) Run the View PAC Utility to save the settings and reboot the View PAC

