

Classification	System and Application FAQ on WinCE PAC				No.	2-026-01	
Author	Tunglu-Yu	Version	1.0.0	Date	2018/03/27	Page	1/4

## How to connect with the mobile network

*Applies to:*

<i>Platform</i>	<i>OS version</i>	<i>WinPAC/ViewPAC utility version</i>
<i>WP-8x2x</i>	<i>All versions</i>	<i>Do not matter with the utility.</i>
<i>WP-9x2x</i>		
<i>WP-523x</i>		
<i>WP-224x</i>		
<i>VP-x231</i>		
<i>VP-x201</i>		

To connect with the mobile network, please perform the following steps:

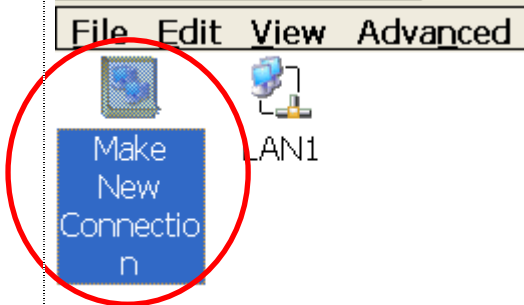
**Note:** Before installing the SIM card, please cancel the PIN lock function of SIM card; otherwise you will not be able to dial the Internet

Create a new dial-up and networking connection

Step1. Control Panel → Double-Click "Network and Dial-up Connections"

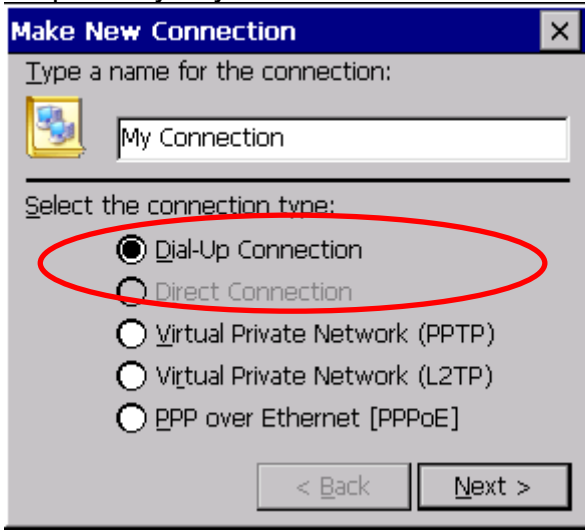


Step 2: Double-Click "Make New Connection"

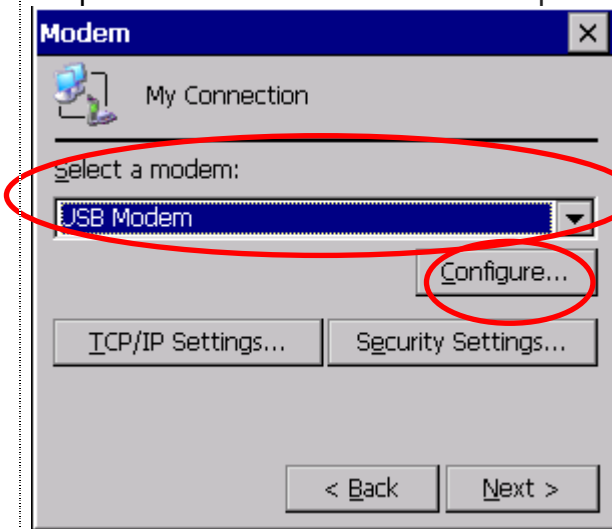


Classification	System and Application FAQ on WinCE PAC				No.	2-026-01	
Author	Tunglu-Yu	Version	1.0.0	Date	2018/03/27	Page	2/4

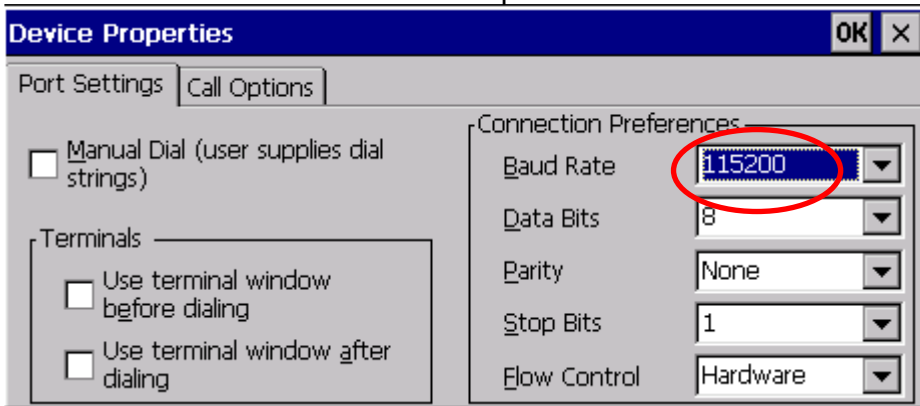
Step 3: Key in your name for the connection → Select “Dial-Up Connection” → Click ”Next”



Step 4: Select "USB Modem" in Drop-down menu → Click “Configure...”



Step 5: Select Baud Rate “115200”, Data Bits “8”, Parity “None”, Stop Bits “1” Note and FlowControl “None” → Click “Call Options”



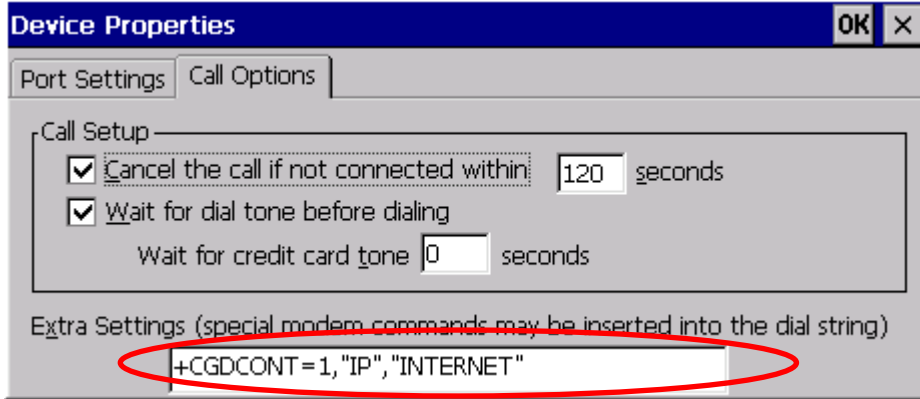
Classification	System and Application FAQ on WinCE PAC				No.	2-026-01	
Author	Tunglu-Yu	Version	1.0.0	Date	2018/03/27	Page	3/4

Step 6: Extra Settings → Click “OK”

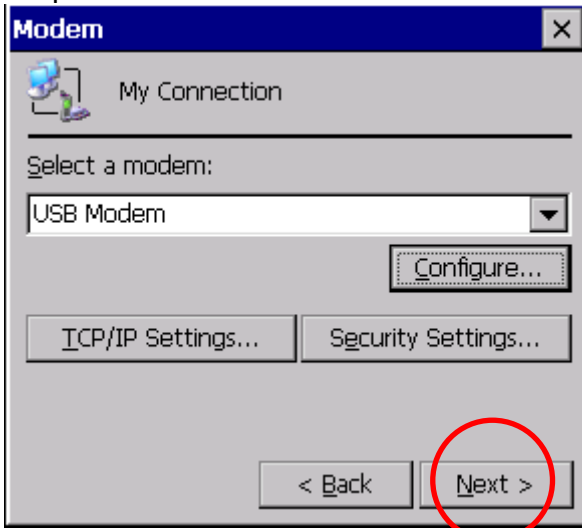
**Note:** GPRS’s APN must be provided from your Telecom. CO., LTD.

For example in Taiwan: +CGDCONT=1,"IP","INTERNET"

For example in China: +CGDCONT=1,"IP","CMNET"



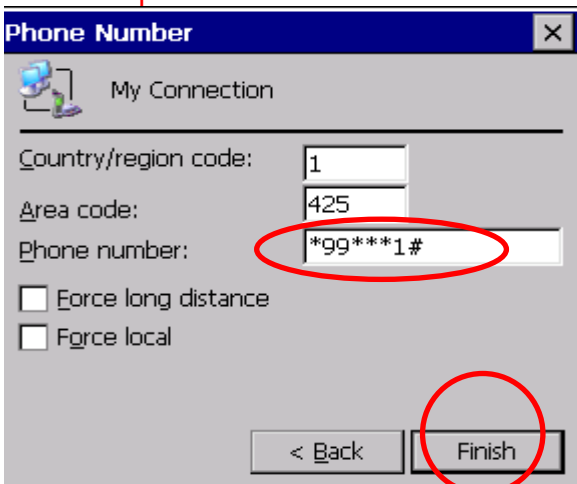
Step 7: Click the “Next” button.



Step 8: Phone Number: → Click “Finish”

**Note:** Phone Number must be provided from your Telecom. CO., LTD.

For example in Taiwan: \*99\*\*\*1#



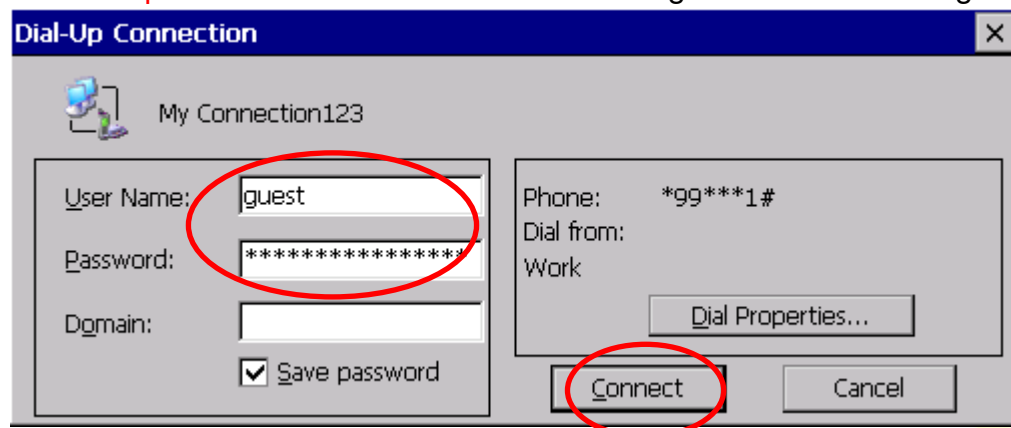
Classification	System and Application FAQ on WinCE PAC				No.	2-026-01	
Author	Tunglu-Yu	Version	1.0.0	Date	2018/03/27	Page	4/4

Step 9: Double-Click you make new connection name.

Key in GPRS's **User name** and **Password** → Click "Connect"

Note: GPRS's **User name** and **Password** must be provided from your Telecom. CO., LTD.

For example in Taiwan: GPRS's **User name** = guest \ Password = guest



Step 10: If you connect to internet successfully, they will show "Connected"

