

Classification	System and Application FAQ on WinCE PAC				No.	1-008-00	
Author	Eric_Shiu	Version	1.0.0	Date	2018/4/27	Page	1/7

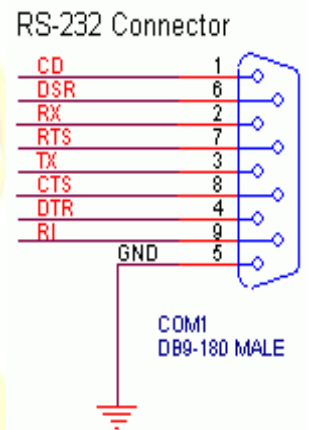
How to set up the I-7560U on WinPAC/ViewPAC

Applies to:

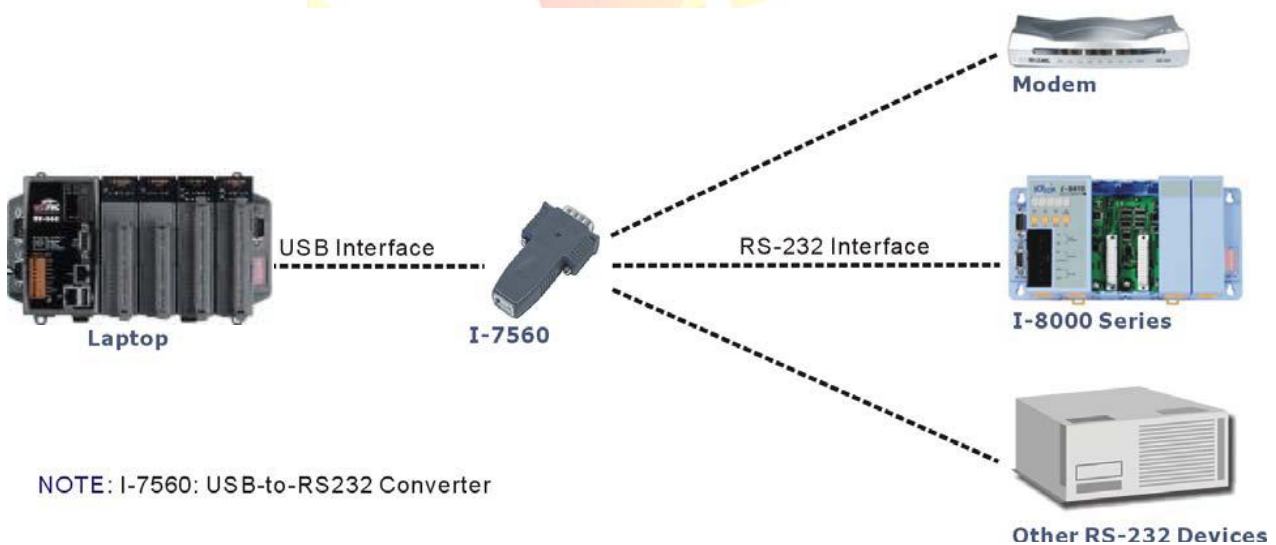
Platform	OS Version	PAC Utility Version
WinPAC	All Versions	All Versions
ViewPAC	All Versions	All Versions

About I-7560U:

I-7560U is a USB-RS232 converter, it features a full set of RS-232 modem data and control signals (TxD, RxD, RTS, CTS, DSR, DTR, DCD, RI, and GND) on its PC compatible DB9 male connector and also provides a high-speed 115.2 Kb/s transmission rate. No external power supply is required as I-7560U takes its power from the USB bus.

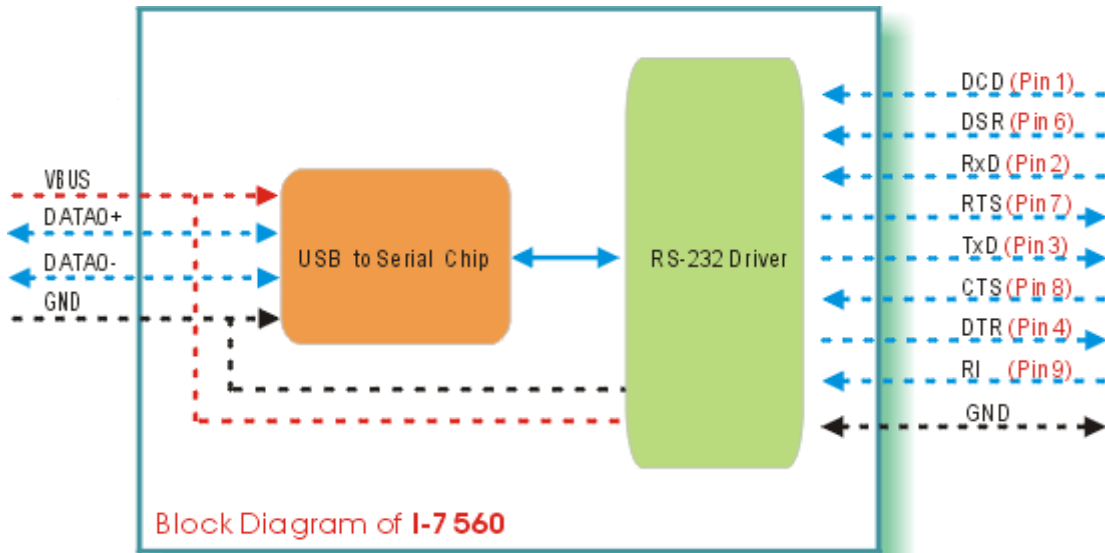


Application:



Classification	System and Application FAQ on WinCE PAC				No.	1-008-00	
Author	Eric_Shiu	Version	1.0.0	Date	2018/4/27	Page	2/7

Block Diagram.

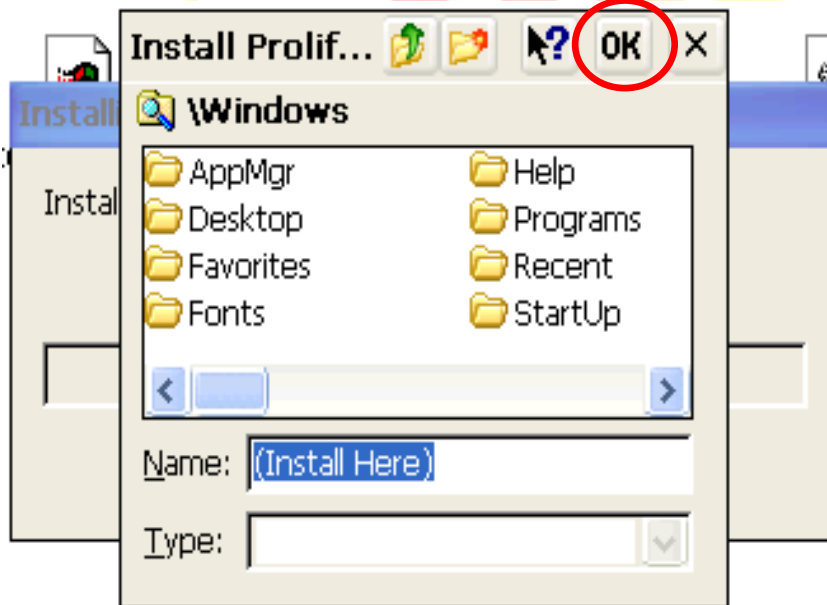


To set the I-7560U

Step 1: Install the device driver.

1.1. Download the driver file “**FT231X_WinCE70_ARM_v11020.CAB**” from http://ftp.icpdas.com/pub/cd/winpac_am335x/wp-5231/system_disk/external_device_driver/i-756x_wince70_driver/ by Internet.

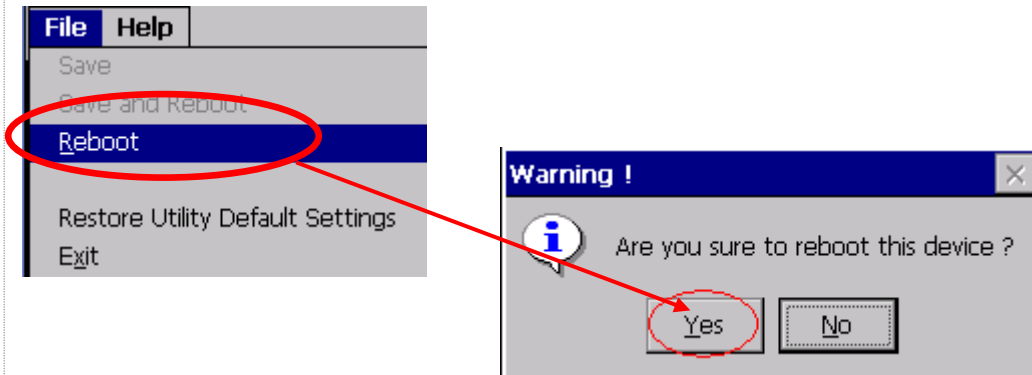
1.2. Double click the driver file “**PL2303_WinCE50_ARM_v1009.CAB**” and click “**OK**”.



Classification	System and Application FAQ on WinCE PAC				No.	1-008-00	
Author	Eric_Shiu	Version	1.0.0	Date	2018/4/27	Page	3/7

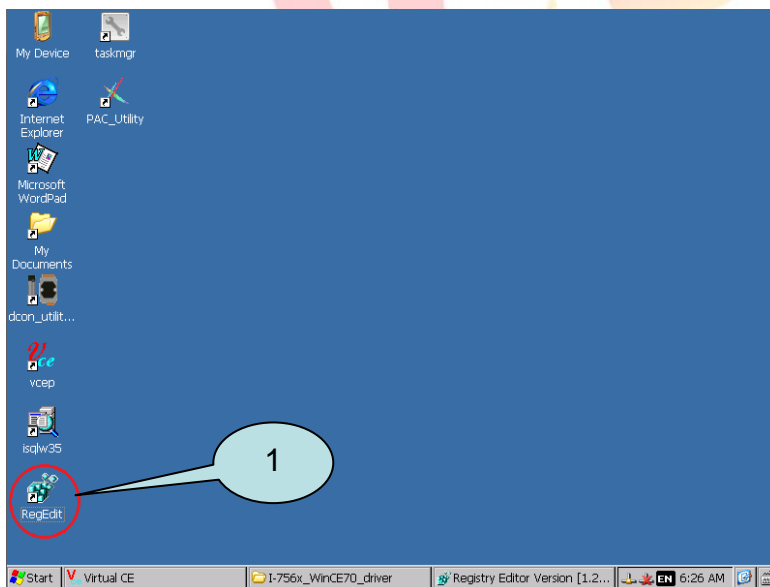
Step 2: Reboot your WinPAC.

- 2.1. Start the PAC utility on the desktop and click **“File”** → **“ Reboot”**.
- 2.2. Click the **“Yes”** button and wait for the device to reboot.



Step 3: Get the COM port name and use it in your application.

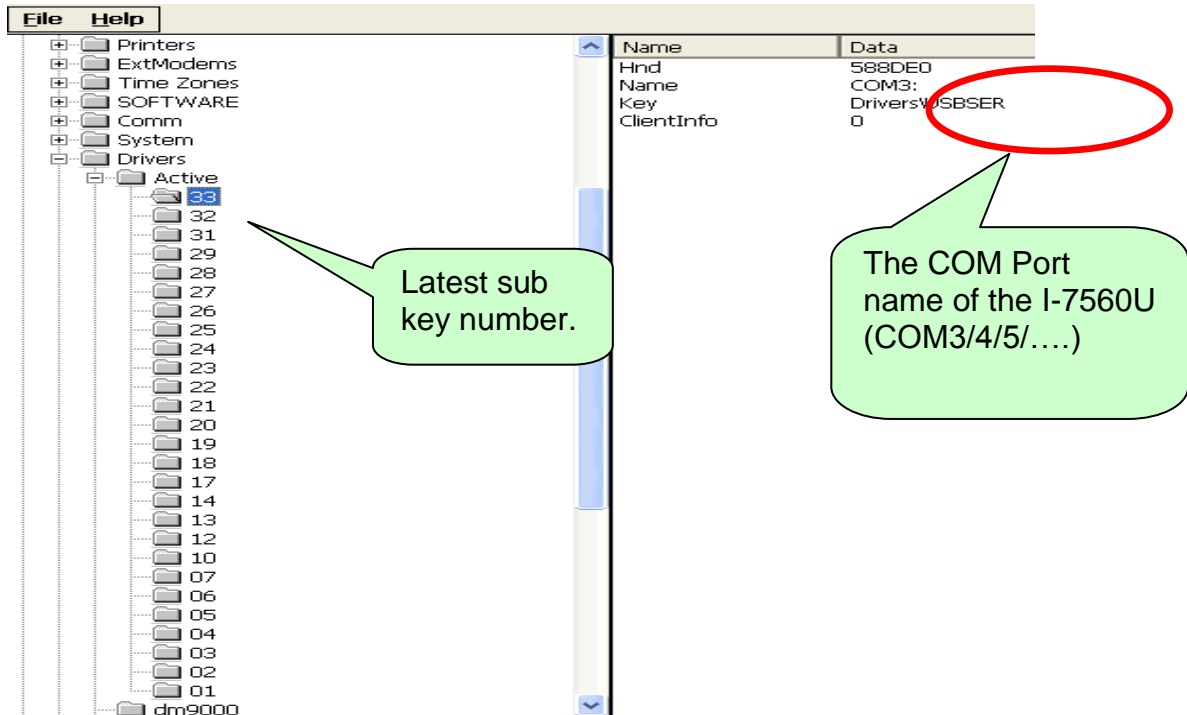
- 3.1. Double click the RegEdit icon on desktop.



- 3.2. Go to HKEY_LOCAL_MACHINE → Drivers → Active and click the Max number of sub key(The value of “key” is “Drivers\USBSER”), the name is displayed in right hand window.

Classification	System and Application FAQ on WinCE PAC				No.	1-008-00	
Author	Eric_Shiu	Version	1.0.0	Date	2018/4/27	Page	4/7

3.3. Fill the name in your program based on serial communication to control the device connected to I-7560U.



Example of Connecting with PC

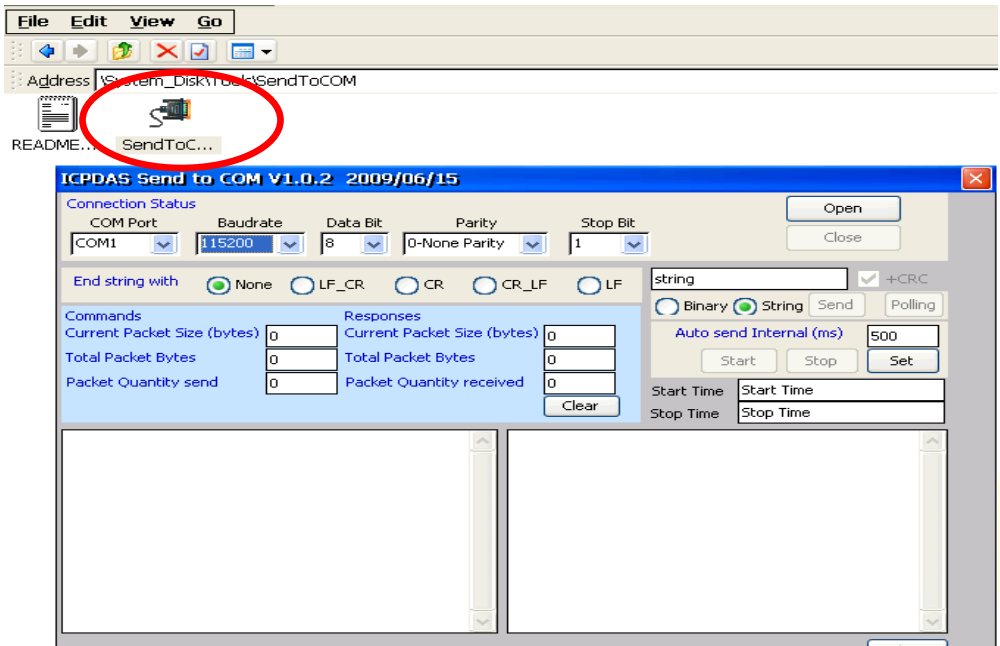
Step 1: Connect the USB port of your WinPAC with I-7560U, and connect the RS-232 connector to your PC. The RS-232 connectors on both I-7560U and PC are DTE compatible, a null modem is needed to connect the I-7520 and PC.



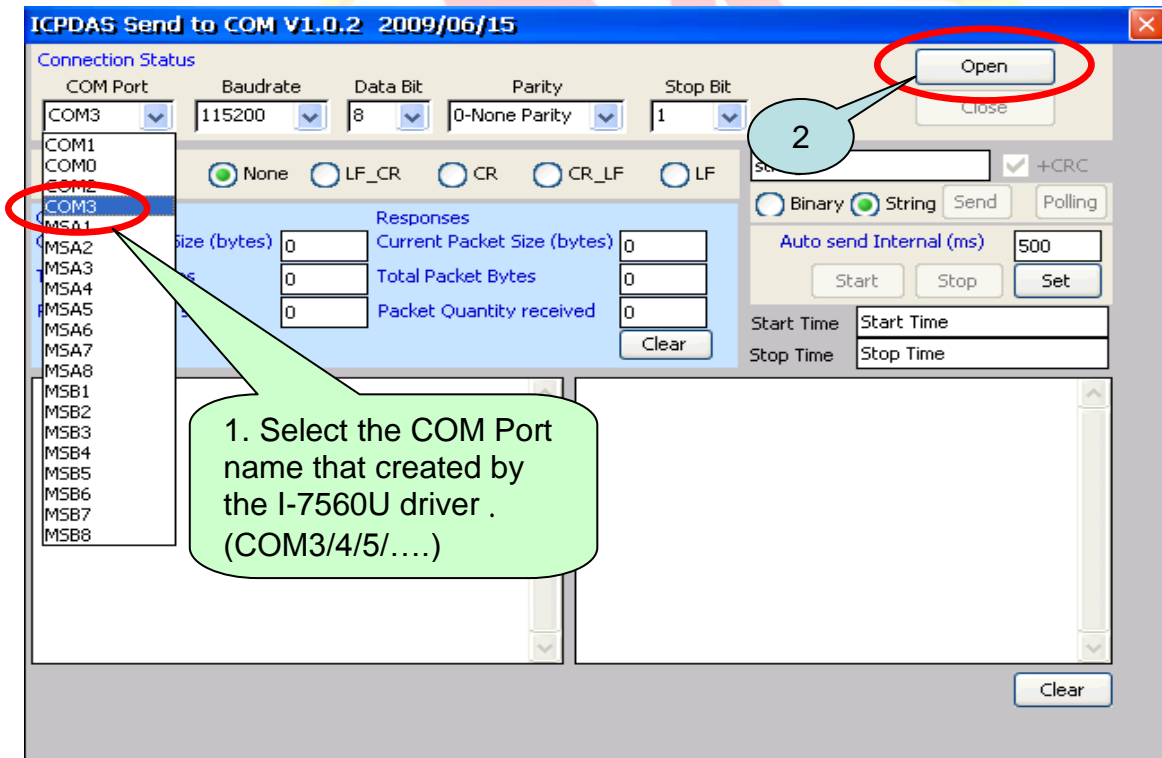
Step 2: Install the driver and get the COM port name.

Classification	System and Application FAQ on WinCE PAC				No.	1-008-00	
Author	Eric_Shiu	Version	1.0.0	Date	2018/4/27	Page	5/7

Step 3: Execute **SendTOCOM.exe** on WinPAC/ViewPAC from the “\System_Disk\Tools\SendToCOM” folder.

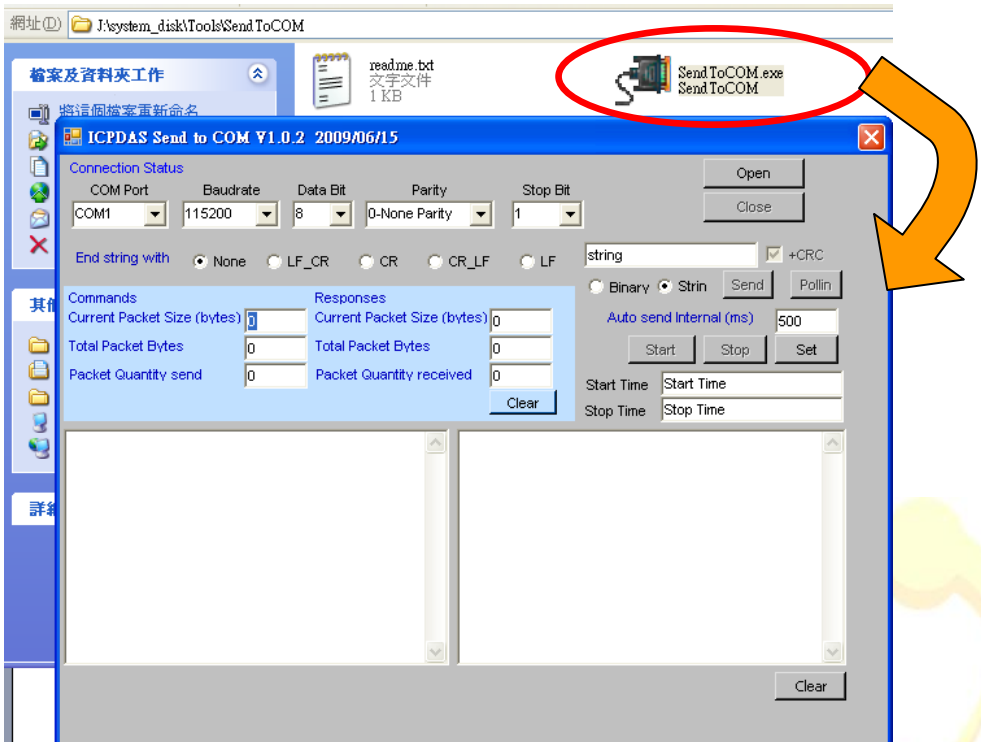


Step 4: Select the COM port number that the I-7560U driver created and press the “Open” button.

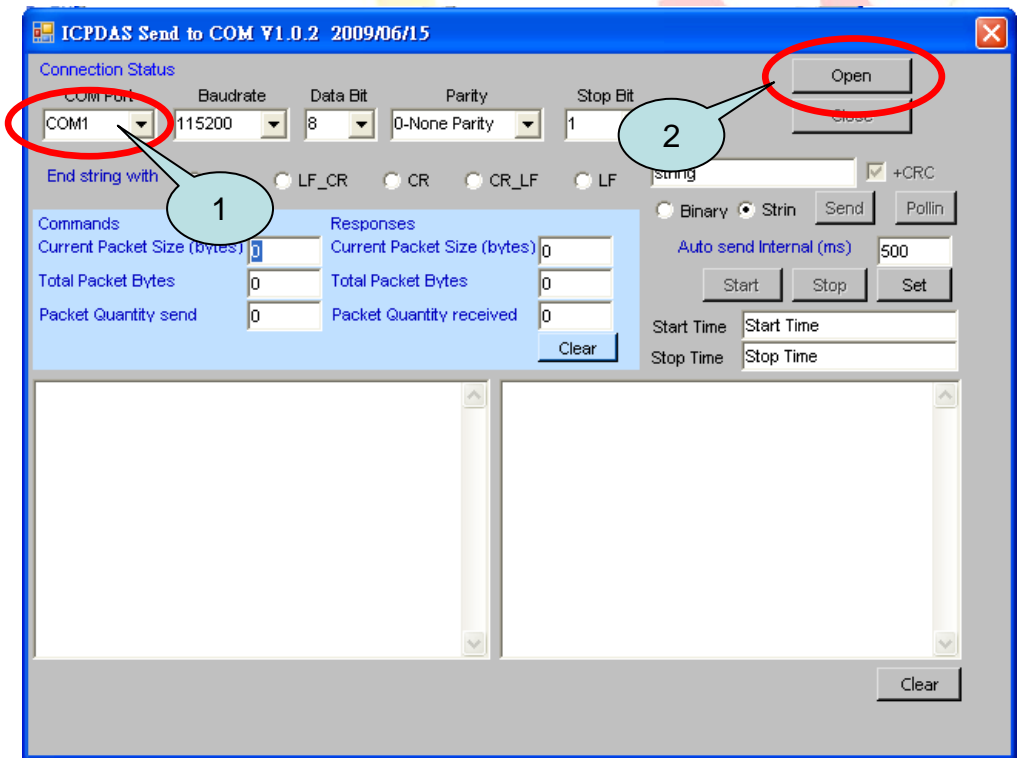


Classification	System and Application FAQ on WinCE PAC				No.	1-008-00	
Author	Eric_Shiu	Version	1.0.0	Date	2018/4/27	Page	6/7

Step 5: Copy “SendToCOM.exe” to PC and run it.

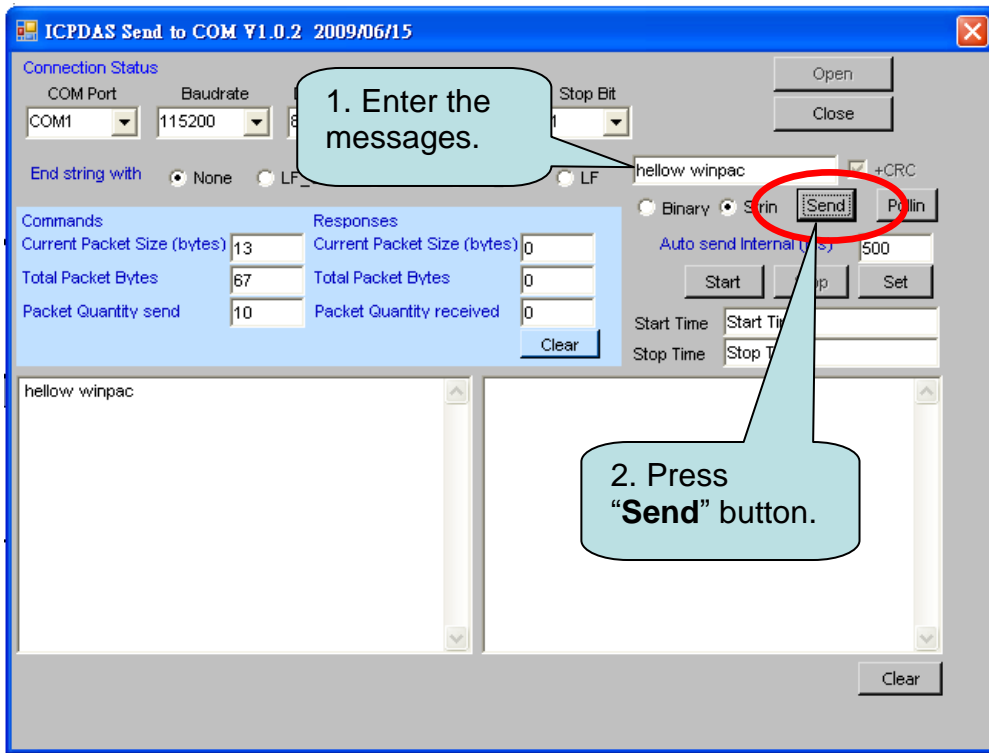


Step 6: Select the COM Port on the PC used to connect to I-7560U and click “Open”.



Classification	System and Application FAQ on WinCE PAC				No.	1-008-00	
Author	Eric_Shiu	Version	1.0.0	Date	2018/4/27	Page	7/7

Step 7: Send message from PC to WinPAC.



Step 8: Check the message received on WinPAC.

