



WP-5231PM-3GWA-CE7 Quick Start

Version 1.0, October 2016

What's in the Box?

In addition to this guide, the package includes the following items:



WP-5231PM-3GWA-CE7



GSM/GPRS External Antenna (ANT-421-04)



GPS Active External Antenna (ANT-115-03)



44 mm DIN-Rail Clip



A microSD card and a micro SD/SD adapter



Software Utility CD



M3x6L Screw * 4



Screw Driver 2.4 mm

Technical Support

WP-5000-CE7 User Manual

CD:\WinPAC_AM335x\Wp-5231\Document\

http://ftp.icpdas.com/pub/cd/winpac_am335x/wp-5231/document/

1

Configuring the Boot Mode

Before starting any installation, be sure that the switch is placed in the "0" position.



2 Installing the SIM card and antenna

Step 1: Push the ejection button to pull out the tray

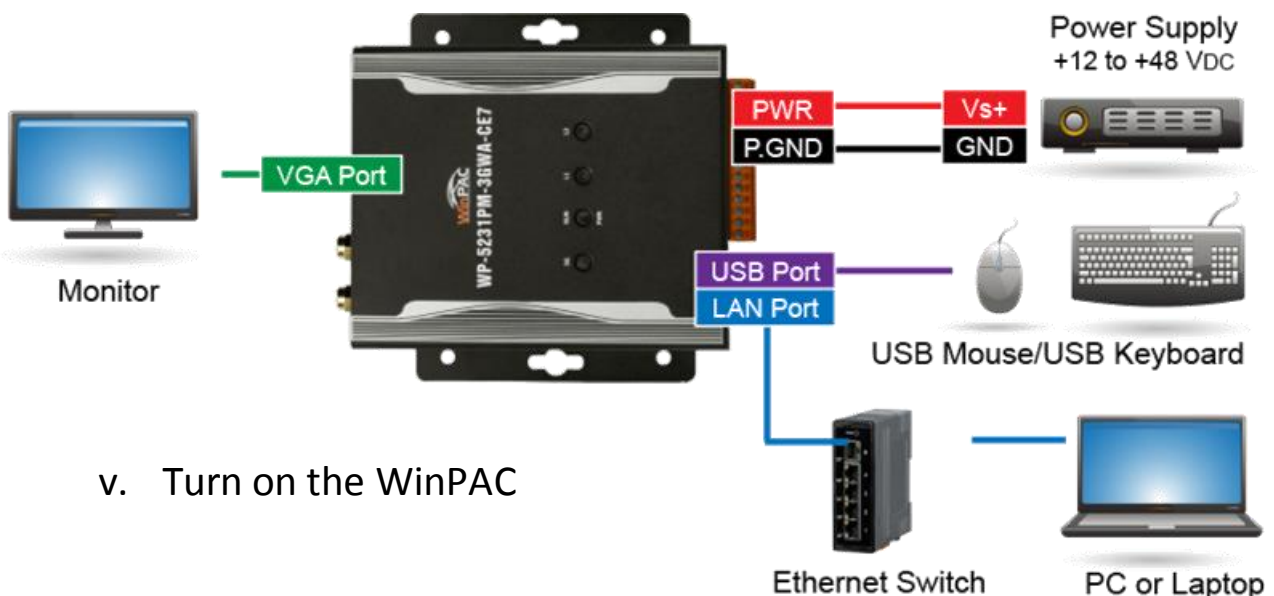
Step 2: Put the SIM card in the tray, and then push the tray back into the socket

Step 3: Screw the GSM/GPRS and GPS antenna tightly into the antenna connectors



3 Connecting to PC, Monitor and Power Supply

- i. Connect the mouse or keyboard to the USB port.
- ii. Connect PC to the Ethernet port through an Ethernet switch.
- iii. Connect the power supply (+12 to +48 V_{DC}) to PWR and GND terminals.
- iv. Connect the monitor to the VGA port.



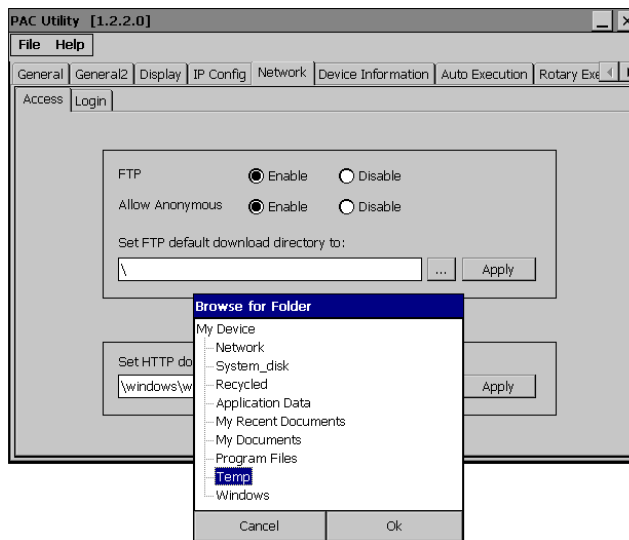
- v. Turn on the WinPAC

4 Using PAC Utility to Manage the WinPAC

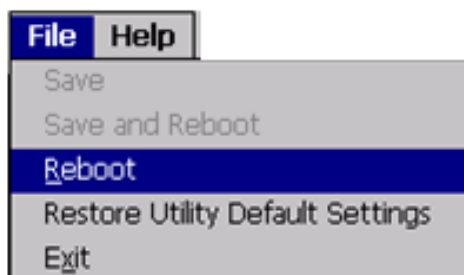
Step 1: Double-click the PAC Utility shortcut on the desktop



Step 2: Configure IP address (DHCP), FTP Server, Auto Execution files..., etc

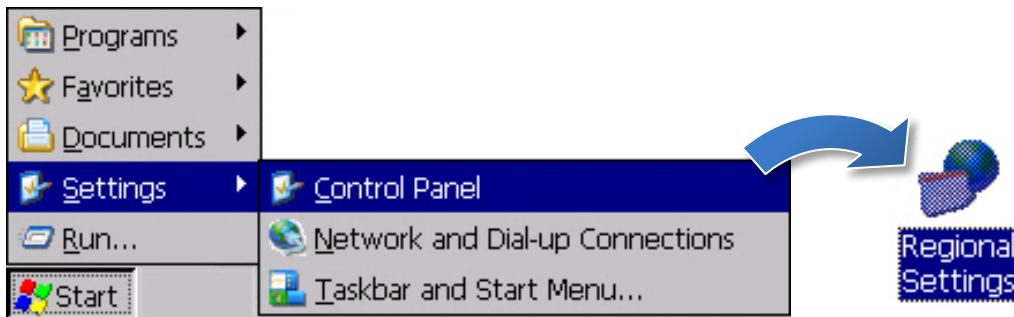


Step 3: Reboot the WinPAC for changes to take effect

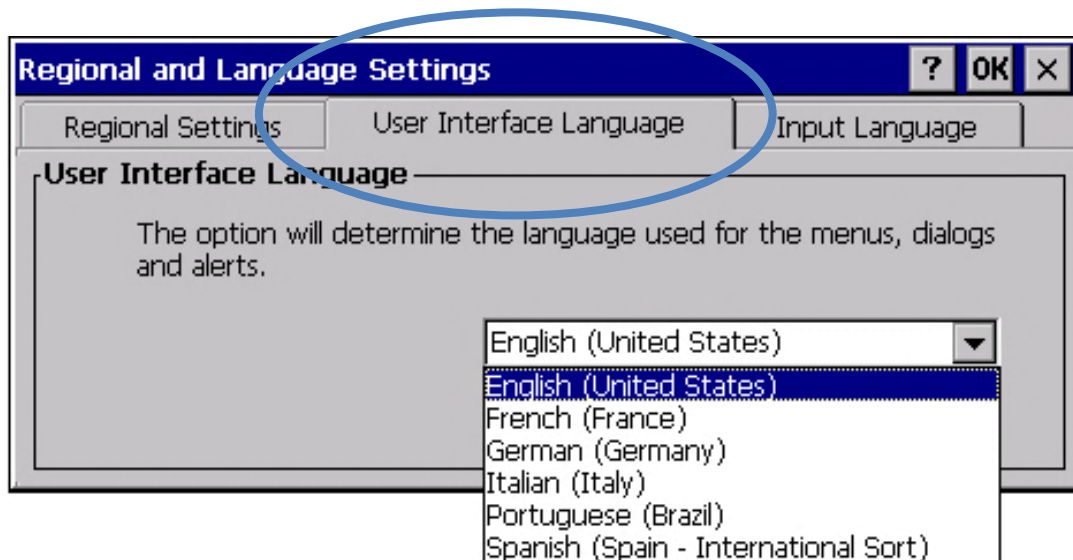


5 Changing the User Interface Language

Step 1: Click Start menu, point to Settings, click Control Panel, and then click Regional Settings



Step 2: Click User Interface Language tab, choose to your local language, and then click OK



Step 3: Run the PAC Utility, and then reboot the WinPAC for changes to take effect

