

| | | | | | | | |
|----------------|---|---------|-------|------|------------|----------|-----|
| Classification | System and Application FAQ on WinCE PAC | | | | No. | 2-019-00 | |
| Author | Eric_Shiu | Version | 1.0.0 | Date | 2018/04/27 | Page | 1/5 |

How to Add a PPPoE Dial-up Connection

Applies to:

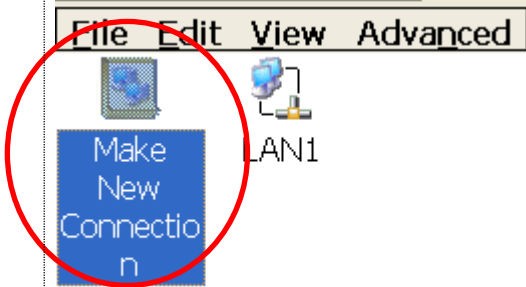
| <i>Platform</i> | <i>OS Version</i> | <i>PAC Utility Version</i> |
|-----------------|---------------------|----------------------------|
| <i>WinPAC</i> | <i>All Versions</i> | <i>All Versions</i> |
| <i>ViewPAC</i> | <i>All Versions</i> | <i>All Versions</i> |

The user can use the ADSL connection to connection with Internation network by the PPPoE Dial-up connection settings. Please perform the follow steps:

Step 1: Open the Network settings by clicking "Settings" _ "Control Panel" and then double-click the "Network and Dial-up connections" icon.



Step 2: Double-click the "Make New Connection" icon to create a new connection.



| | | | | | | | |
|----------------|---|---------|-------|------|------------|----------|-----|
| Classification | System and Application FAQ on WinCE PAC | | | | No. | 2-019-00 | |
| Author | Eric_Shiu | Version | 1.0.0 | Date | 2018/04/27 | Page | 2/5 |

Step 3: In the "Make New Connection" dialog box, enter a name for the connection and select the "PPP over Ethernet (PPPoE)" option as the connection type, and then click the "Next" button.

1. Enter a name for the connection

2. Select "PPP over Ethernet (PPPoE)"

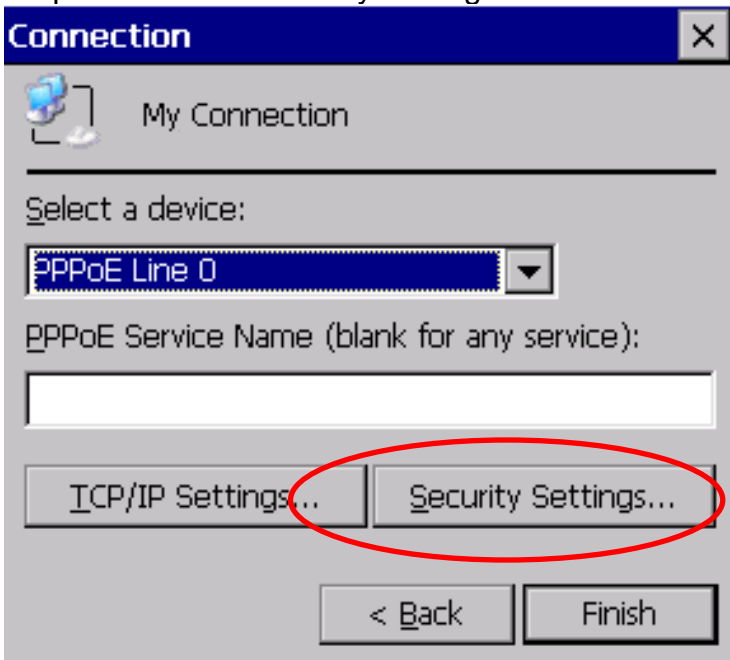
3. Click the "Next" button

Step 4: In the "Select a device" drop-down menu, select the "PPPoE Line 0" option indicated as the dial-up connection from LAN1, select the "PPPoE Line 1" option indicated as the dial-up connection from LAN2.

Select the Dial-up connection from LAN1/LAN2

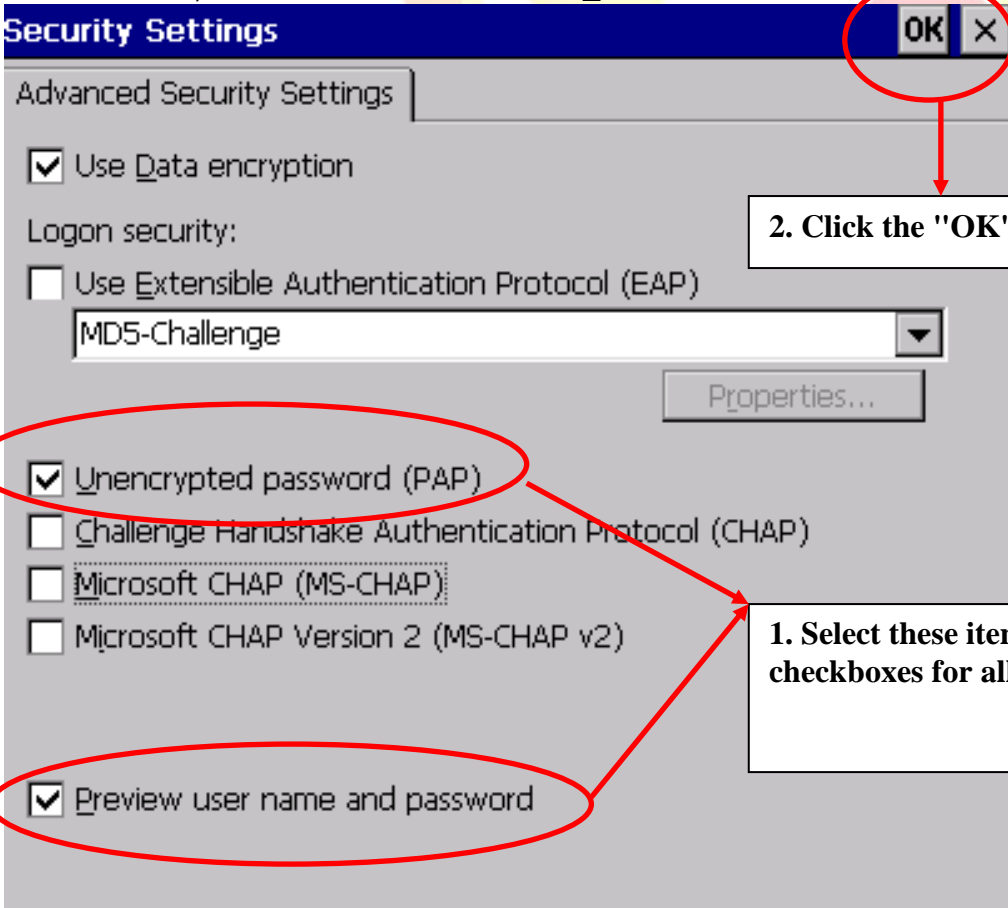
| | | | | | | | |
|----------------|---|---------|-------|------|------------|----------|-----|
| Classification | System and Application FAQ on WinCE PAC | | | | No. | 2-019-00 | |
| Author | Eric_Shiu | Version | 1.0.0 | Date | 2018/04/27 | Page | 3/5 |

Step 5: Click the "Security Settings" button.



Click the "Security Settings" button

Step 6: In the "Security Settings" dialog box, check the "Unencrypted password (PAP)" and the "Preview user name and password" checkbox items, and clear check boxes for all other items, then click the "OK" button.

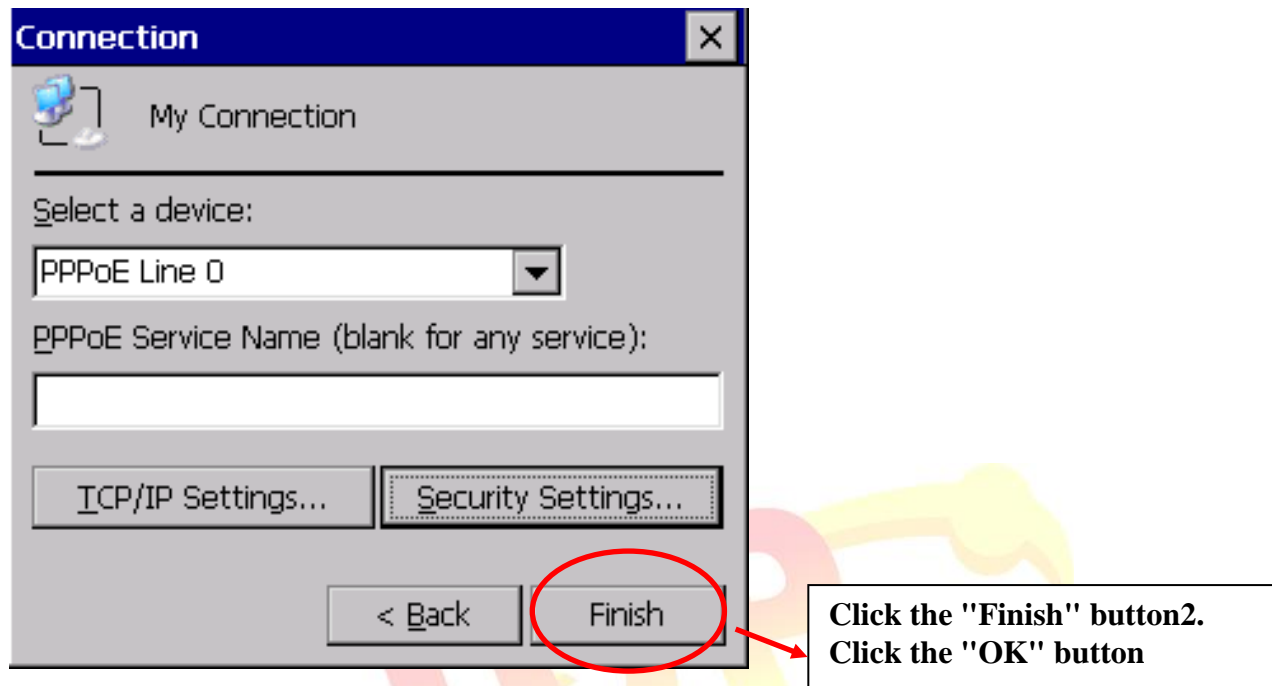


2. Click the "OK" button

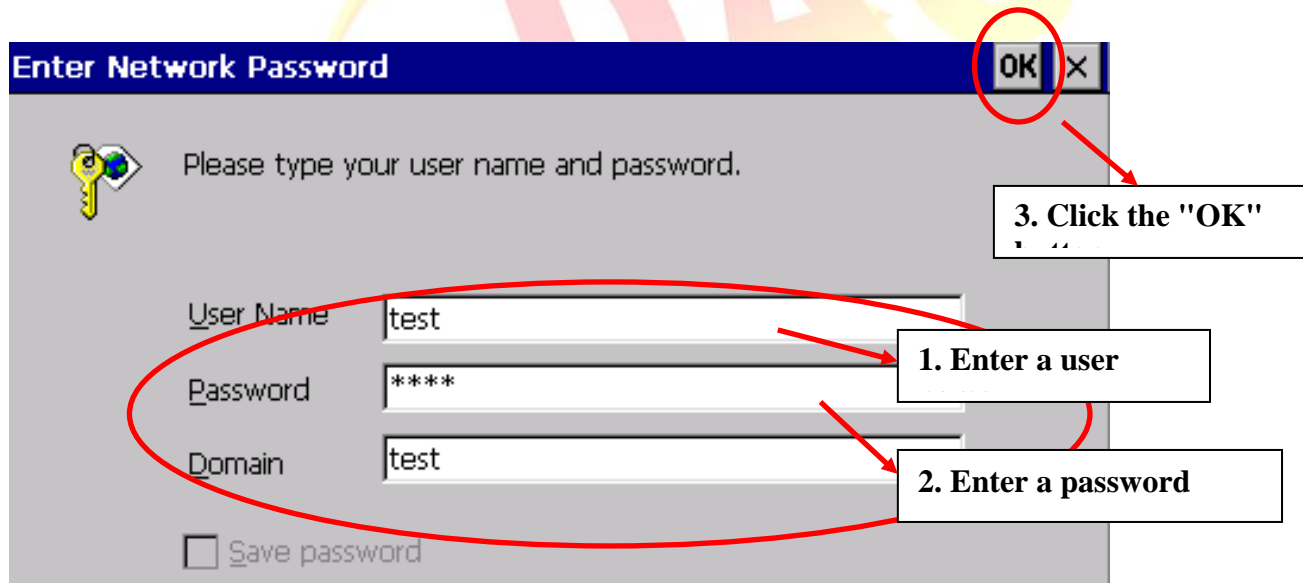
1. Select these items, and clear the checkboxes for all other items

| | | | | | | | |
|----------------|---|---------|-------|------|------------|----------|-----|
| Classification | System and Application FAQ on WinCE PAC | | | | No. | 2-019-00 | |
| Author | Eric_Shiu | Version | 1.0.0 | Date | 2018/04/27 | Page | 4/5 |

Step 7: Click the "Finish" button to save the settings and complete the creation of the new connection.



Step 8: In the Network settings window, double-click the icon for the new "PPPoE" connection and then enter a user name and password in the login window. If you wish to save the password for future use, check the "Save password" checkbox. Click the "OK" button to establish a connection.



Step 9: A status window will be displayed with the message "Connected", indicating that the connection was successfully established.

| | | | | | | | |
|----------------|---|---------|-------|------|------------|----------|-----|
| Classification | System and Application FAQ on WinCE PAC | | | | No. | 2-019-00 | |
| Author | Eric_Shiu | Version | 1.0.0 | Date | 2018/04/27 | Page | 5/5 |

