


Classification	System and Application FAQ on WinCE PAC				No.	1-004-03	
Author	Eric_Shiu	Version	1.0.1	Date	2018/4/27	Page	1/4

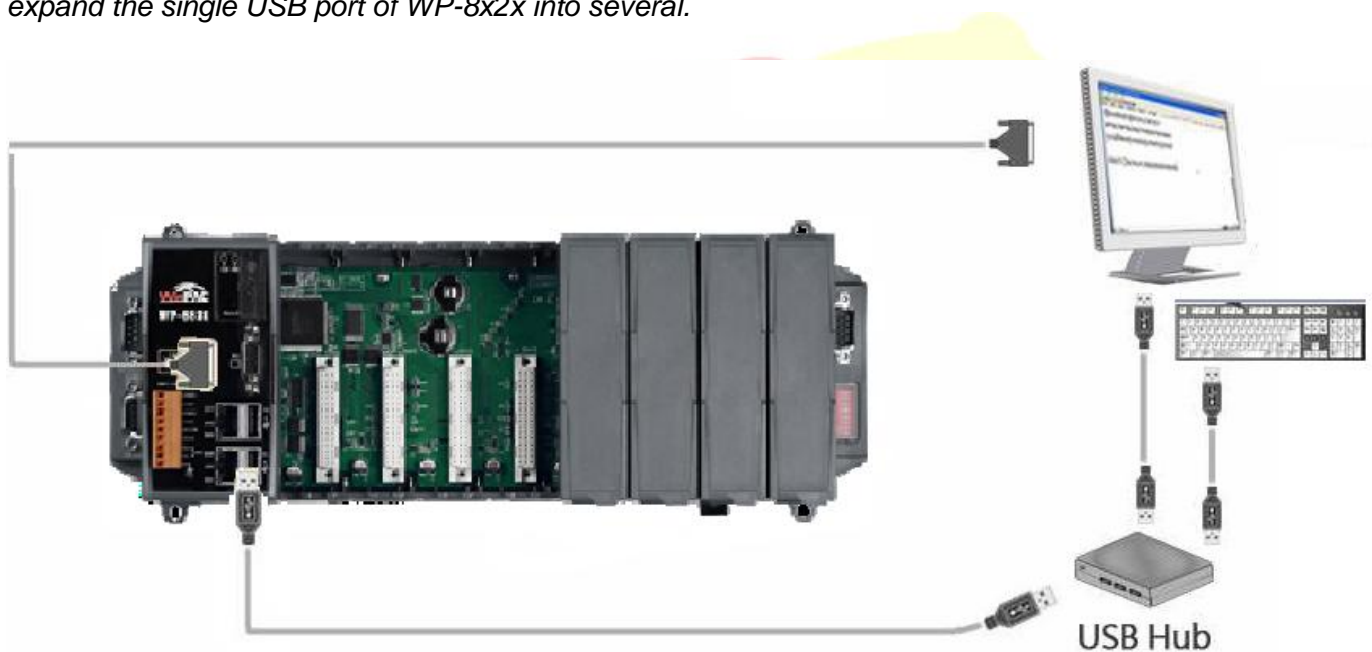
## How to set up a Penmount USB touch panel

*Applies to:*

<i>Platform</i>	<i>OS Version</i>	<i>PAC Utility Version</i>
<i>WinPAC</i>	<i>All Versions</i>	<i>All Versions</i>

### Tips & Warnings

 To use a touch panel and a keyboard at the same time on WP-8x2x, you need a USB hub to expand the single USB port of WP-8x2x into several.



To use a Penmount USB touch panel, perform the following steps:

**Step 1:** Locate the driver.

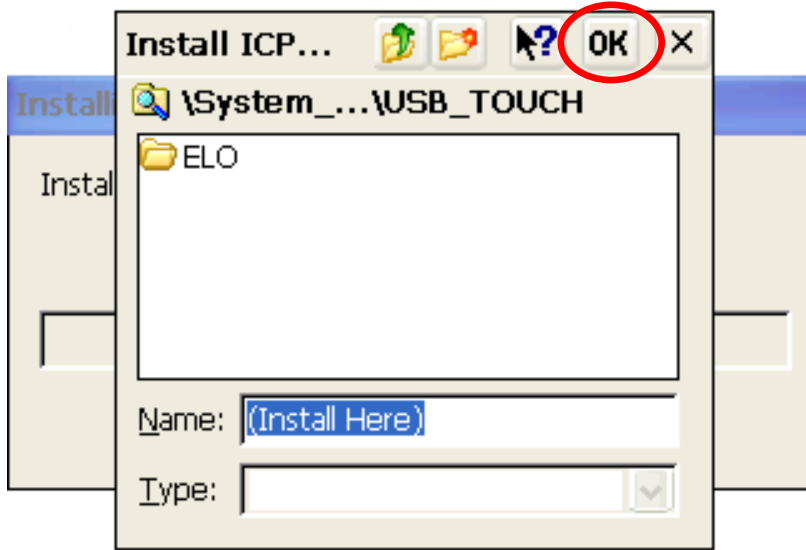
The **PenMount\_USB\_TOUCH\_V20100526.CAB** is located at

1. **WinPAC file path:** \System\_Disk\External\_device\_driver\
2. CD: \Wp-5231\System\_Disk\External\_device\_driver\
3. [http://ftp.icpdas.com/pub/cd/winpac\\_am335x/wp-5231/system\\_disk/external\\_device\\_driver/](http://ftp.icpdas.com/pub/cd/winpac_am335x/wp-5231/system_disk/external_device_driver/)

Classification	System and Application FAQ on WinCE PAC				No.	1-004-03	
Author	Eric_Shiu	Version	1.0.1	Date	2018/4/27	Page	2/4

**Step 2: Install the driver.**

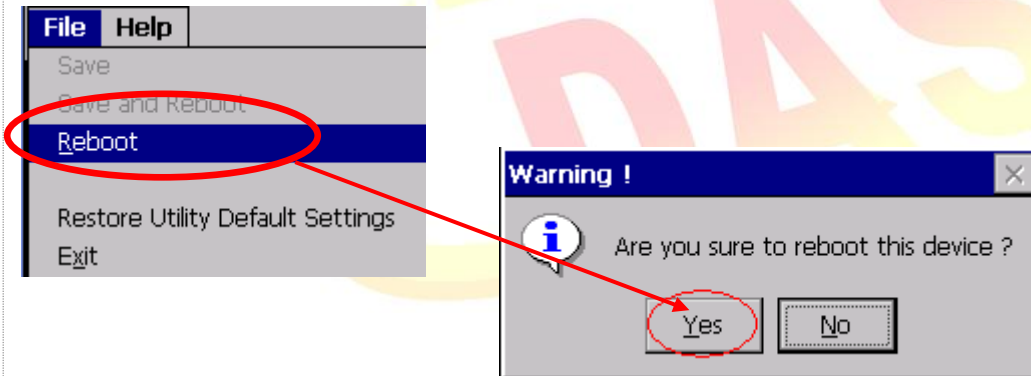
2.1. Double click the **PenMount\_USB\_TOUCH\_V20100526.CAB** file, and then click **“OK”**.



**Step 3: Reboot your WinPAC.**

3.1. Start the PAC utility on the desktop and click the **“File”** → **“Reboot”**.

3.2. Click the **“Yes”** button on the warning window and wait for reboot.



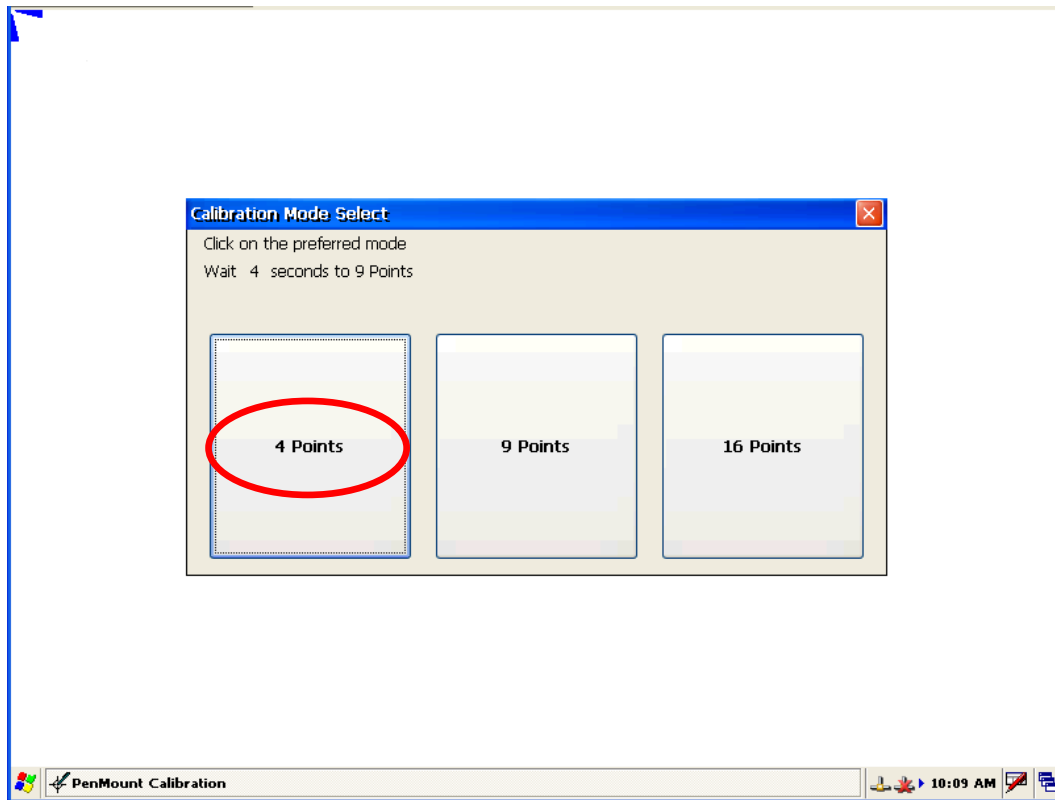
**Step 4: Calibrate the touch panel.**


4.1. After rebooting, click My Device → System\_Disk → Drivers → USB\_TOUCH → PenMount → LNK → Calibration.

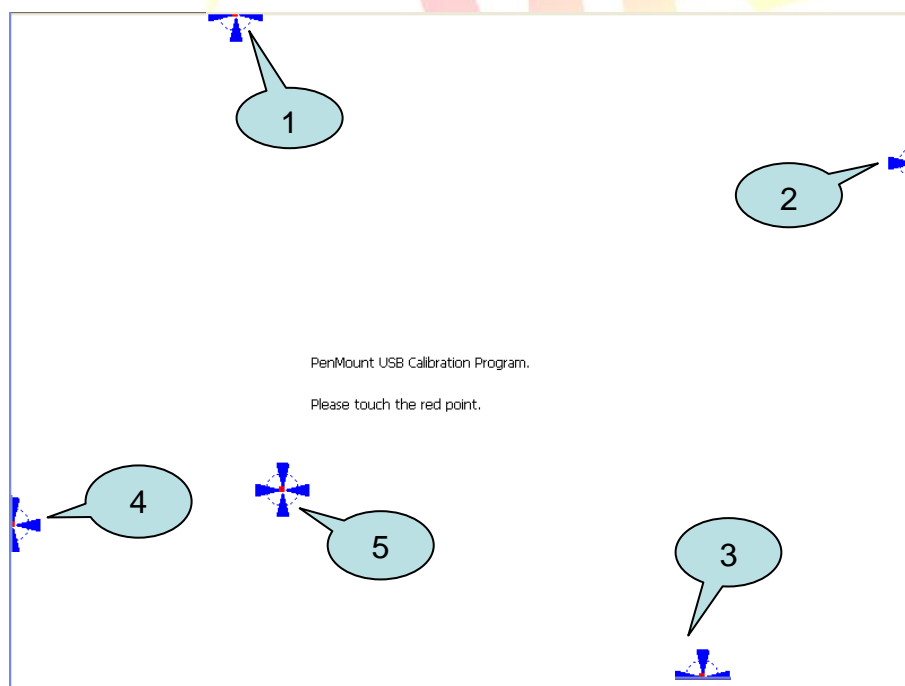


Classification	System and Application FAQ on WinCE PAC				No.	1-004-03	
Author	Eric_Shiu	Version	1.0.1	Date	2018/4/27	Page	3/4

4.2. Click the “4 Points” button.  
(Pressing “9 Points” or “16 Points” button could process a more accurate calibration)



4.3. Touch the “” icons on the monitor one by one to perform the calibration process.



Classification	System and Application FAQ on WinCE PAC				No.	1-004-03	
Author	Eric_Shiu	Version	1.0.1	Date	2018/4/27	Page	4/4

**Step 5:** Save the settings.

- 5.1. Start the PAC utility and click the **“File”** → **“Reboot”** menu option.
- 5.2. Click the **“Yes”** button and wait for reboot.

