

Classification	System and Application FAQ on WinCE PAC				No.	4-005-00	
Author	Aileex_Do	Version	1.0.3	Date	2015/11/24	Page	1/23

How to build the VisualStudio 2008 environment on Windows Embedded Compact 7

Applies to:

<i>Platform</i>	<i>OS version</i>	<i>WinPAC/ViewPAC utility version</i>
<i>VP-x201-CE7</i>	<i>All versions</i>	<i>All versions</i>
<i>VP-x231-CE7</i>	<i>All versions</i>	<i>All versions</i>
<i>WP-5231-CE7</i>	<i>All versions</i>	<i>All versions</i>
<i>WP-9x21-CE7</i>	<i>All versions</i>	<i>All versions</i>

Content :

Installation steps :

1. Visual Studio 2008 Professional
2. Visual Studio 2008 Service Pack 1
3. Visual Studio 2008 update for Windows Embedded Compact 7
4. Windows Embedded Compact 7 ATL Update for Visual Studio 2008 SP1
5. Install WinPAC/ViewPAC platform SDK

Build first program :

1. Create a project
2. Setting Platform
3. Add PACSDK
4. Add control item
5. Add event

Classification	System and Application FAQ on WinCE PAC				No.	4-005-00	
Author	Aileex_Do	Version	1.0.3	Date	2015/11/24	Page	2/23

Installation steps :

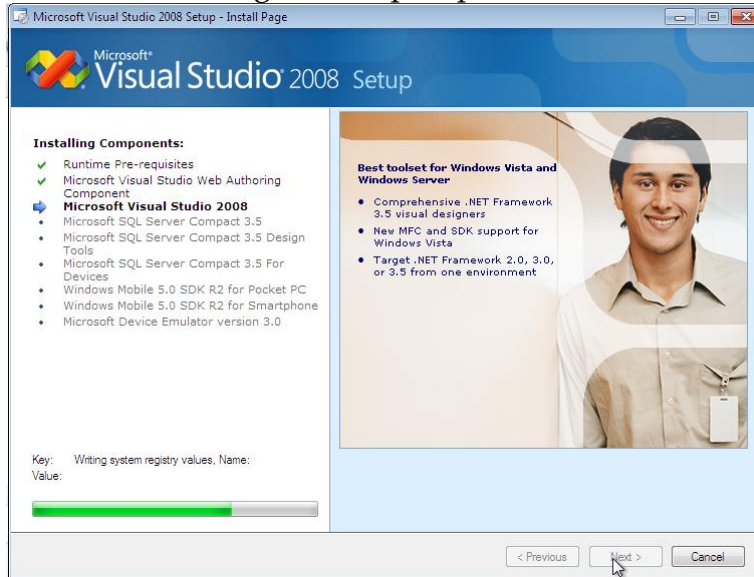
1. Visual Studio 2008 Professional:

Download VS2008 Pro if you have an MSDN subscription:

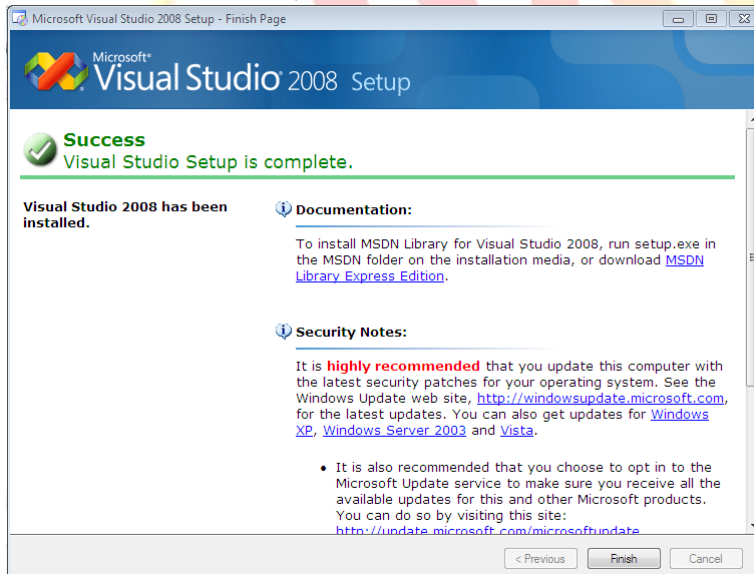
<https://msdn.microsoft.com/en-us/subscriptions/securedownloads/hh442898>

Otherwise you need to purchase it by your regular distributor.

1.1 Then following the setup step to install the Visual Studio 2008.



1.2 After installation, it will show like this. Press "Finish" and going to next step.



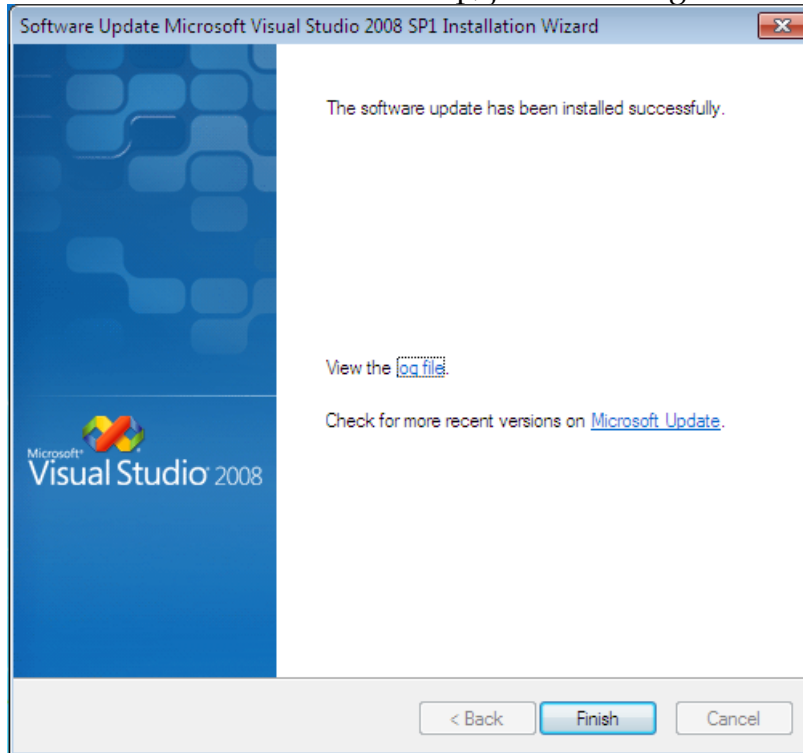
Classification	System and Application FAQ on WinCE PAC				No.	4-005-00	
Author	Aileex_Do	Version	1.0.3	Date	2015/11/24	Page	3/23

2. Visual Studio 2008 Service Pack 1:

Download it from

<http://www.microsoft.com/en-us/download/details.aspx?id=10986>

2.1 Like Visual Studio 2008 setup, just following the installation step to the Finish.



Classification	System and Application FAQ on WinCE PAC				No.	4-005-00	
Author	Aileex_Do	Version	1.0.3	Date	2015/11/24	Page	4/23

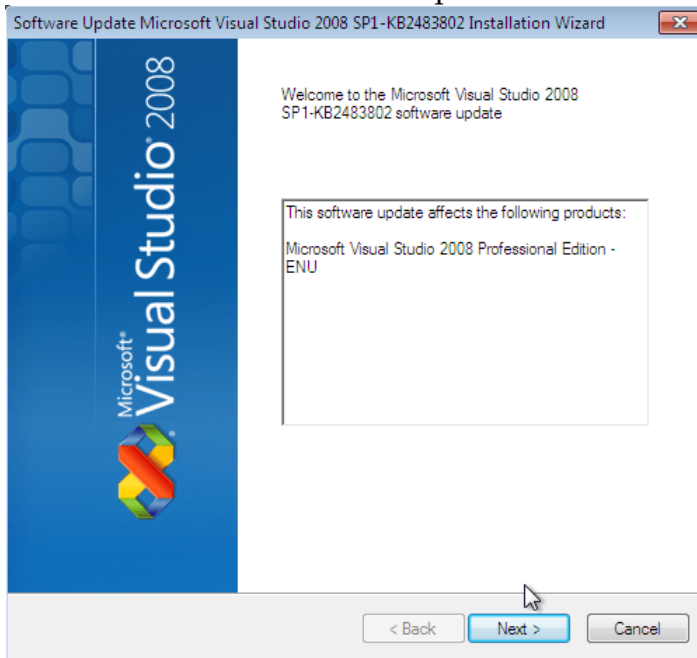
3. Visual Studio 2008 update for Windows Embedded Compact 7:

VS90SP1-KB2483802-x86.exe

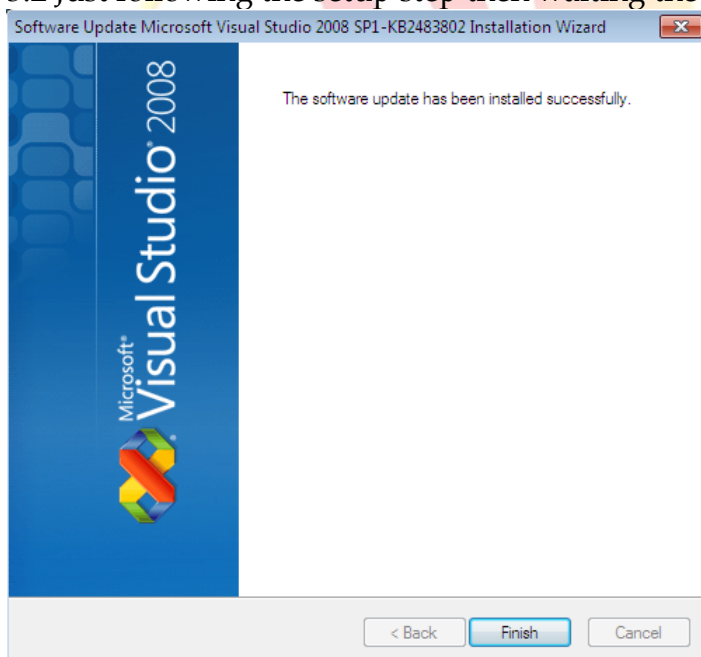
or download it from

<http://www.microsoft.com/en-us/download/confirmation.aspx?id=11935>

3.1 After installation Visual Studio 2008 and update the SP1 packet, then update the Windows Embedded Compact 7 on it.



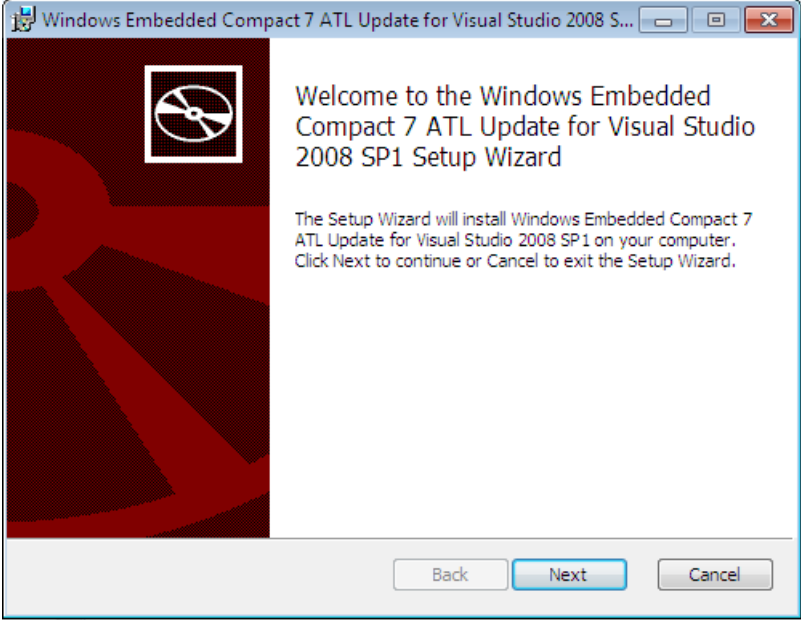
3.2 Just following the setup step then waiting the wizard finished.



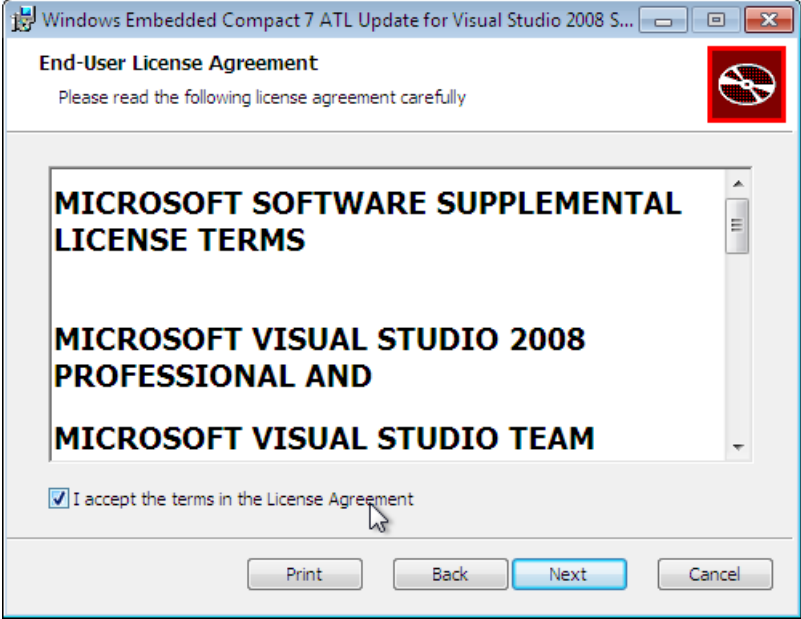
Classification	System and Application FAQ on WinCE PAC				No.	4-005-00	
Author	Aileex_Do	Version	1.0.3	Date	2015/11/24	Page	5/23

4. Windows Embedded Compact 7 ATL Update for Visual Studio 2008 SP1:
VisualStudioDeviceWindowsEmbeddedCompact7.msi
or download it from
<http://support.microsoft.com/kb/2468183/en-us>

4.1 Now we update the ATL.

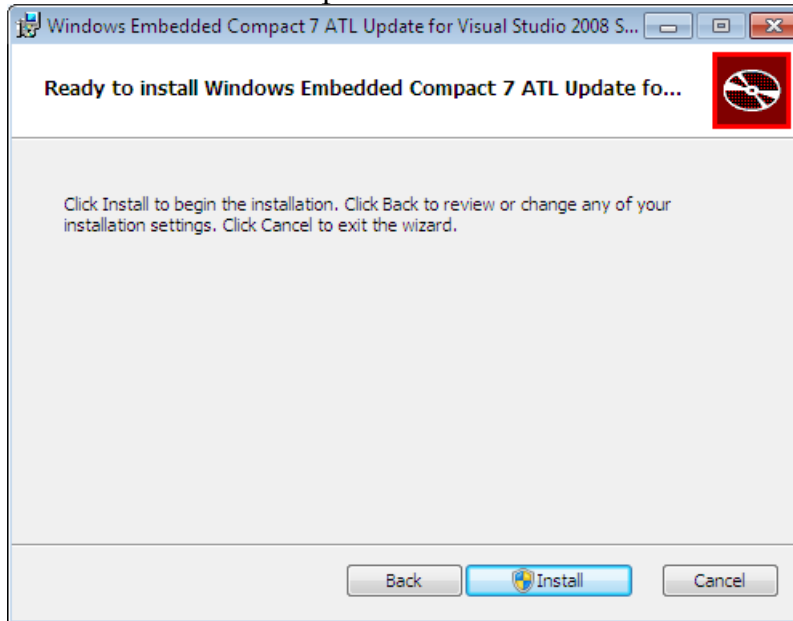


4.2 Accept the license agreement and Press "Next" to go on.

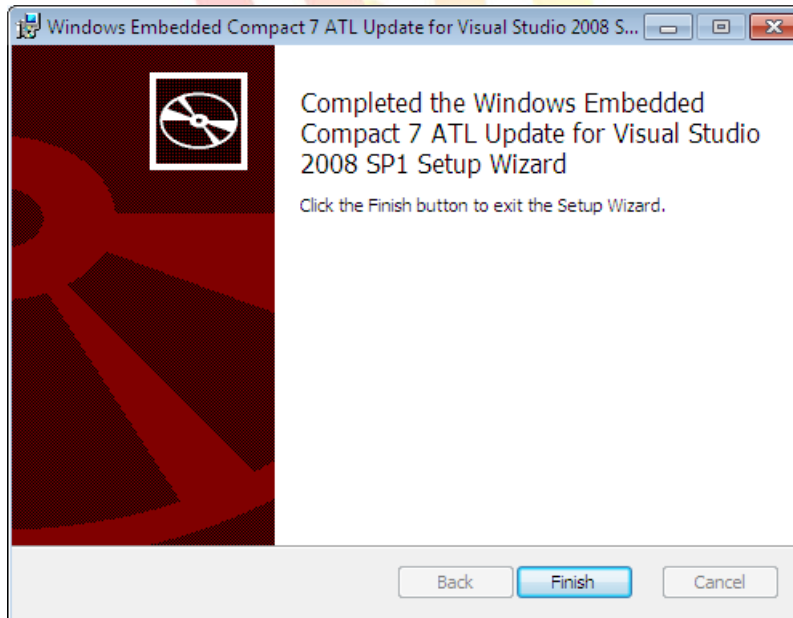


Classification	System and Application FAQ on WinCE PAC				No.	4-005-00	
Author	Aileex_Do	Version	1.0.3	Date	2015/11/24	Page	6/23

4.3 Press "Install" to update.



4.4 Finish.



Classification	System and Application FAQ on WinCE PAC				No.	4-005-00	
Author	Aileex_Do	Version	1.0.3	Date	2015/11/24	Page	7/23

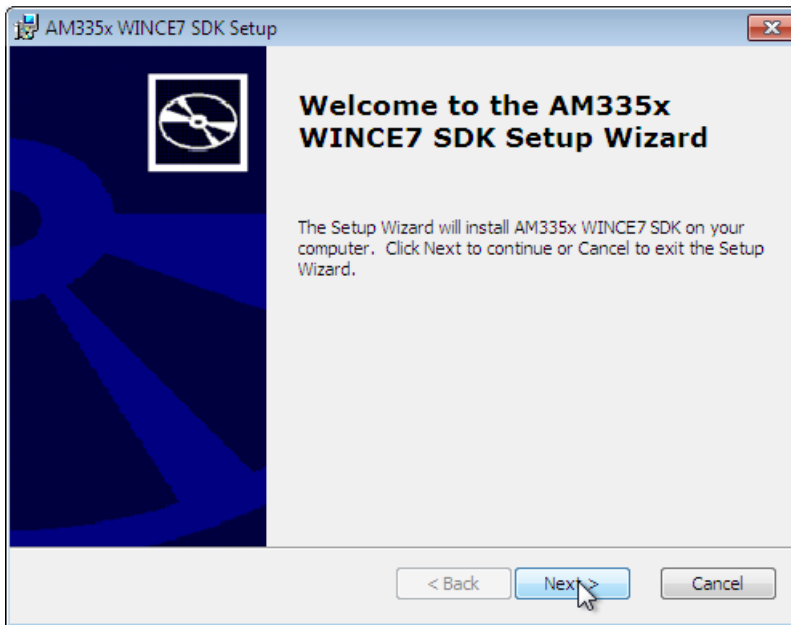
5. Install WinPAC/ViewPAC platform SDK:

The latest version of the installation package from FTP site listed as following FTP:

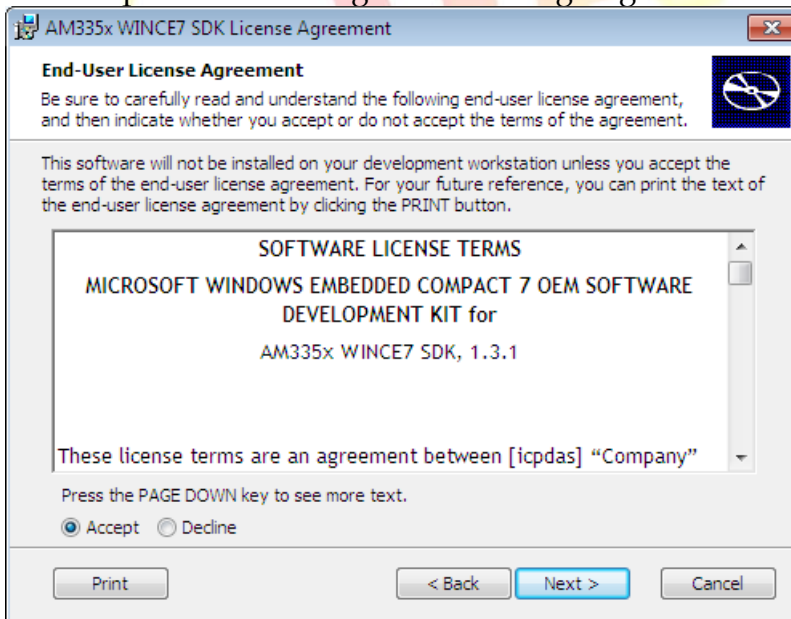
http://ftp.icpdas.com/pub/cd/winpac_am335x/wp-5231/sdk/platformsdk/

File name: AM335x_WINCE7_SDK_yyyymmdd.msi
 yyymmdd : platform sdk released date

5.1 Press "Next >"

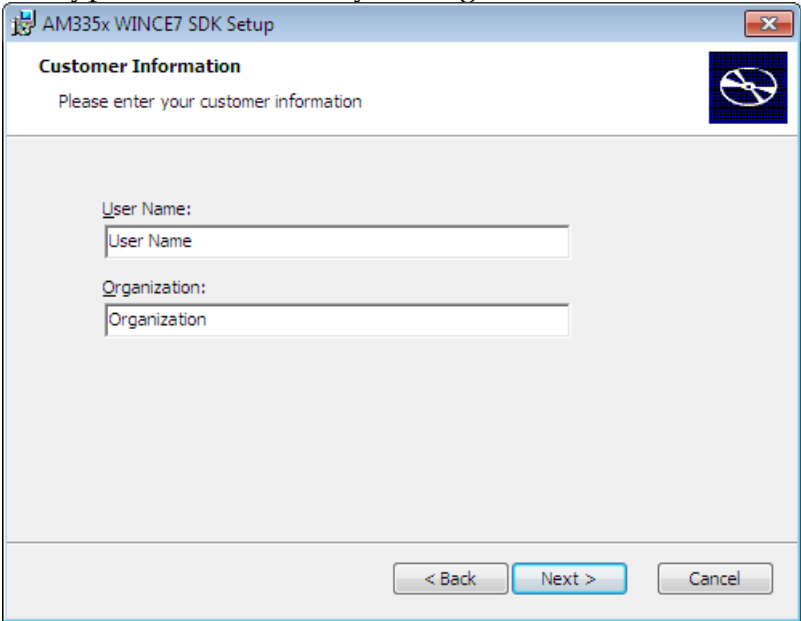


5.2 Accept the License Agreement and going on.

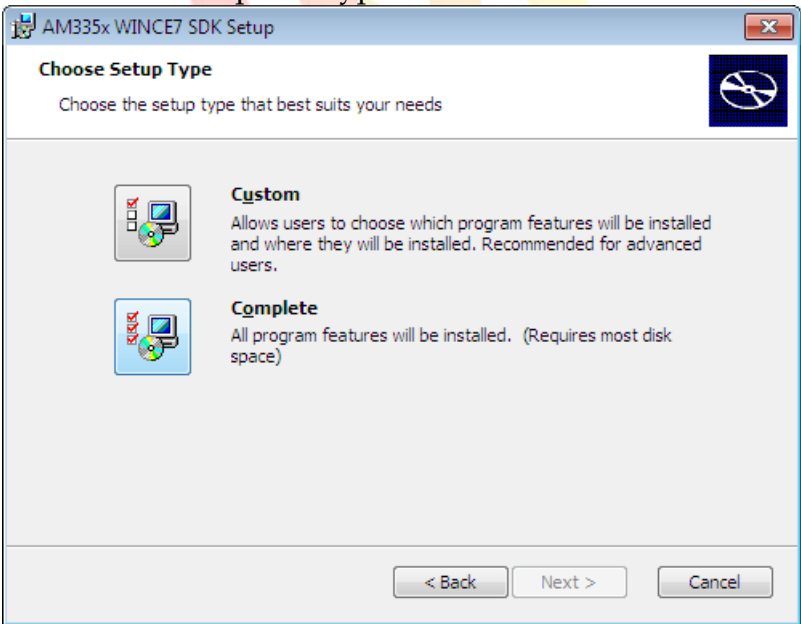


Classification	System and Application FAQ on WinCE PAC				No.	4-005-00	
Author	Aileex_Do	Version	1.0.3	Date	2015/11/24	Page	8/23

5.3 Type User name and your organization.

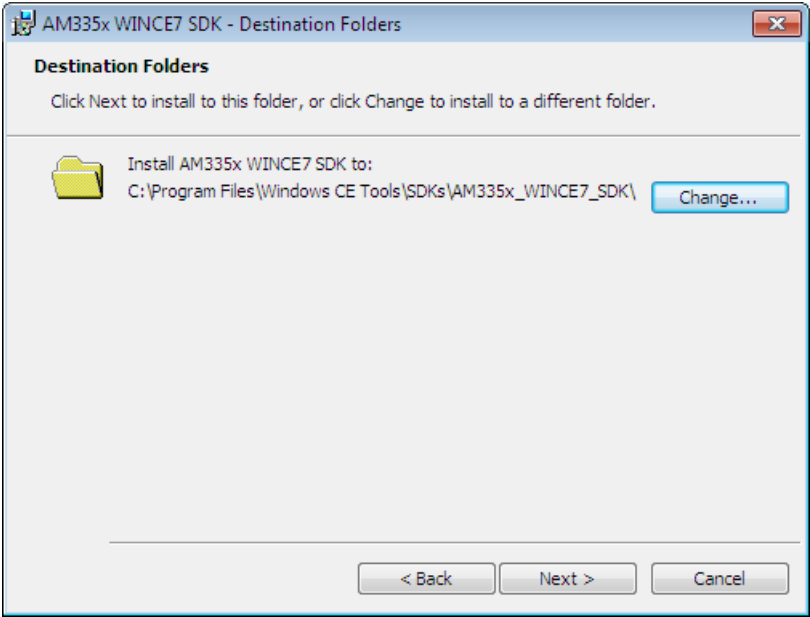


5.4 Select "Complete" type to install

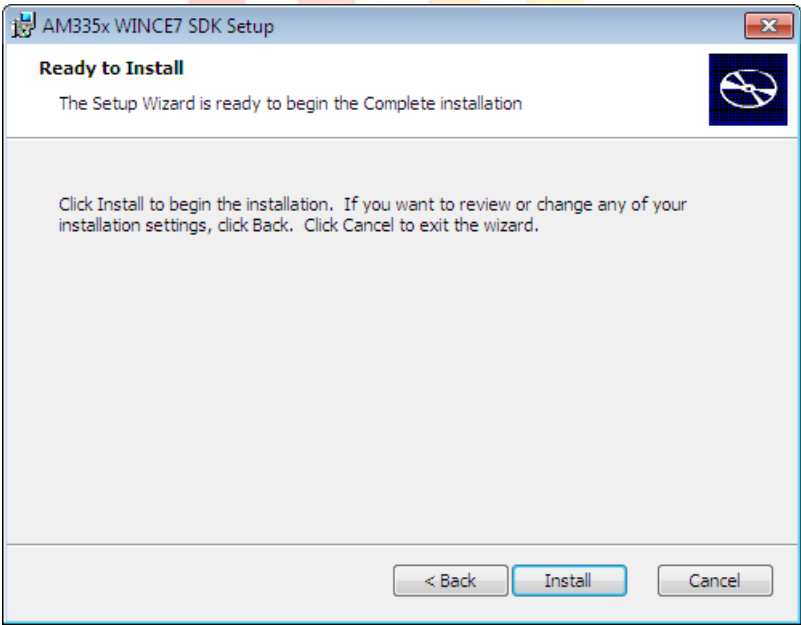


Classification	System and Application FAQ on WinCE PAC				No.	4-005-00	
Author	Aileex_Do	Version	1.0.3	Date	2015/11/24	Page	9/23

5.5 You can choose where to locate the SDK.

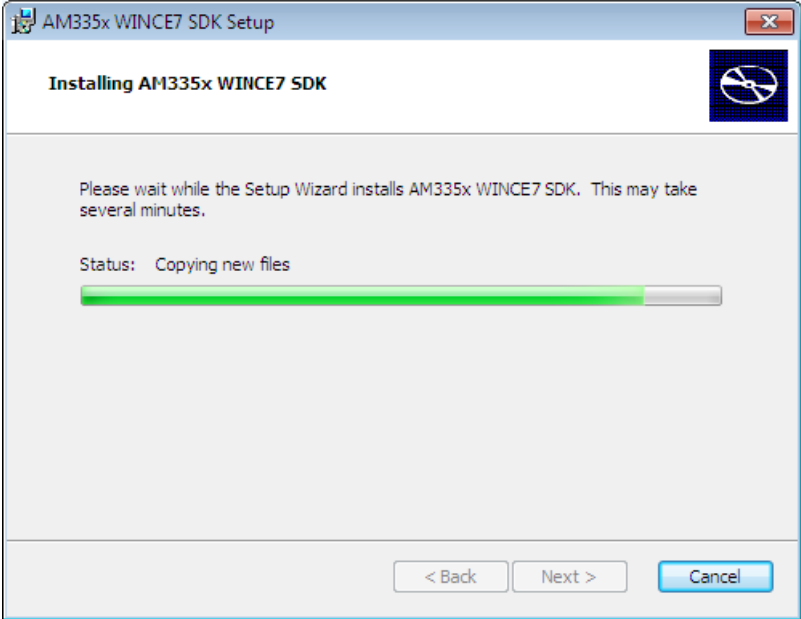


5.6 Then start to install.

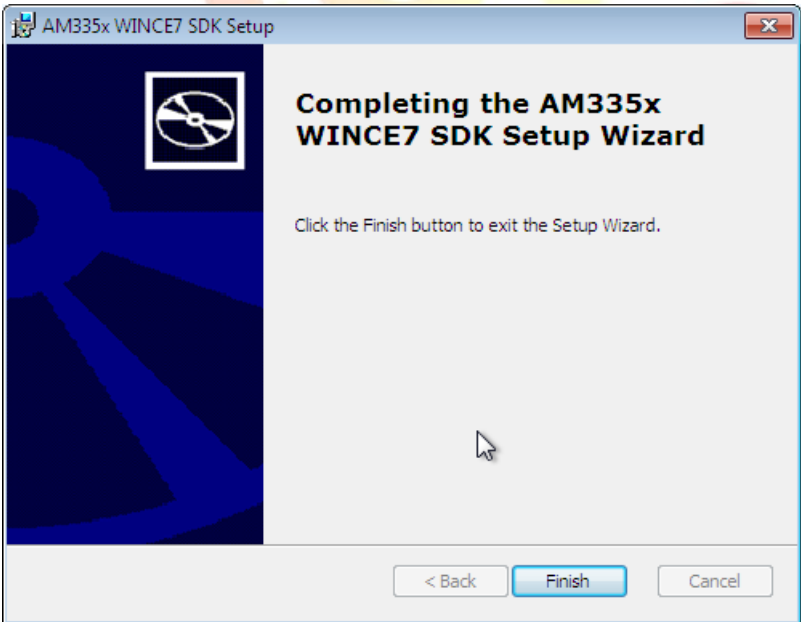


Classification	System and Application FAQ on WinCE PAC				No.	4-005-00	
Author	Aileex_Do	Version	1.0.3	Date	2015/11/24	Page	10/23

5.7 Now setup is going.



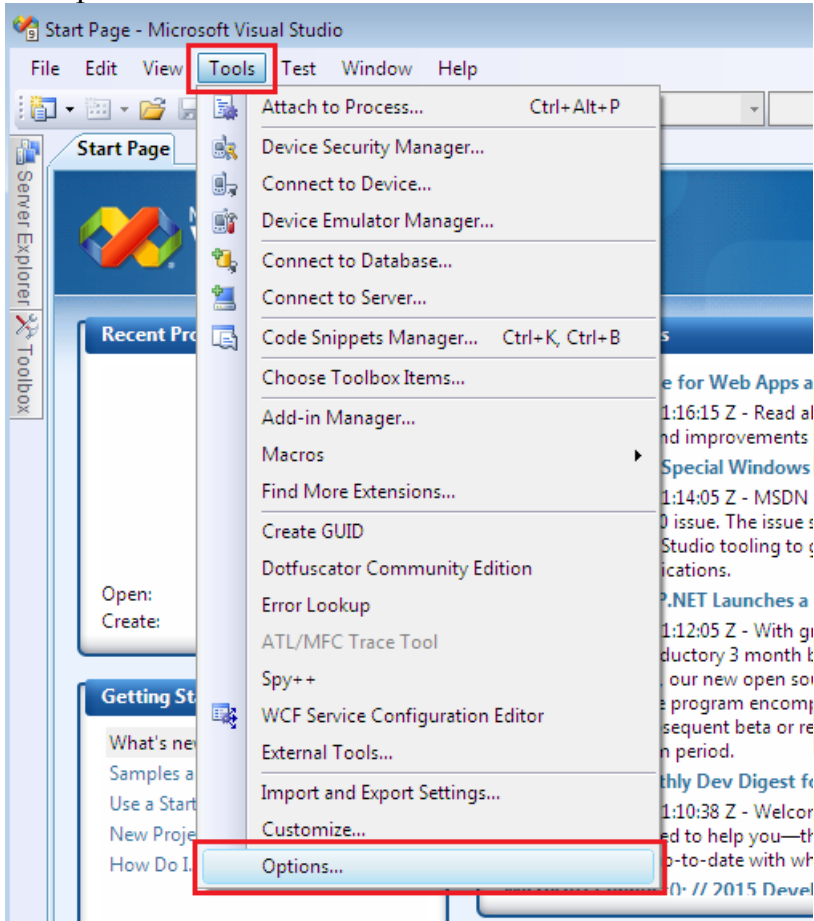
5.9 Finish.



Classification	System and Application FAQ on WinCE PAC				No.	4-005-00	
Author	Aileex_Do	Version	1.0.3	Date	2015/11/24	Page	11/23



6. After installation Visual Studio 2008、SP1、Windows Embedded Compact 7 update、ATL Update and WinPAC/ViewPAC platform SDK, now need to set it.

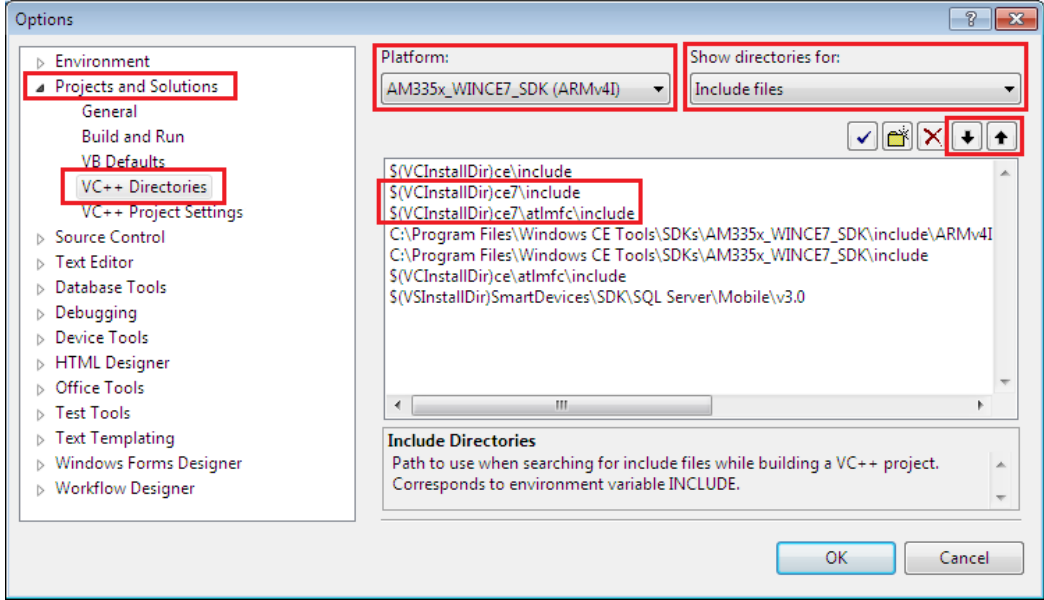
6.1 Open Visual Studio 2008, select the "Tools" at the menu bar, click "Options..."



Classification	System and Application FAQ on WinCE PAC				No.	4-005-00	
Author	Aileex_Do	Version	1.0.3	Date	2015/11/24	Page	12/23

6.2 At the left form, click "Projects and Solutions" and find "VC++ Directories".
 At the right side, choice "AM335x_WINCE7_SDK(ARMv4I)" under "Platform:", and choice "Include files" under "Show directories for:".

Then using the   button to set the "\$\VCInstallDir\ce7\include" and "\$\VCInstallDir\ce7\atlmfc\include" to the right position like the following picture.



Classification	System and Application FAQ on WinCE PAC				No.	4-005-00	
Author	Aileex_Do	Version	1.0.3	Date	2015/11/24	Page	13/23

Build first program

Now the Visual Studio 2008 is going to work, let's see how to build your first program at VC++.

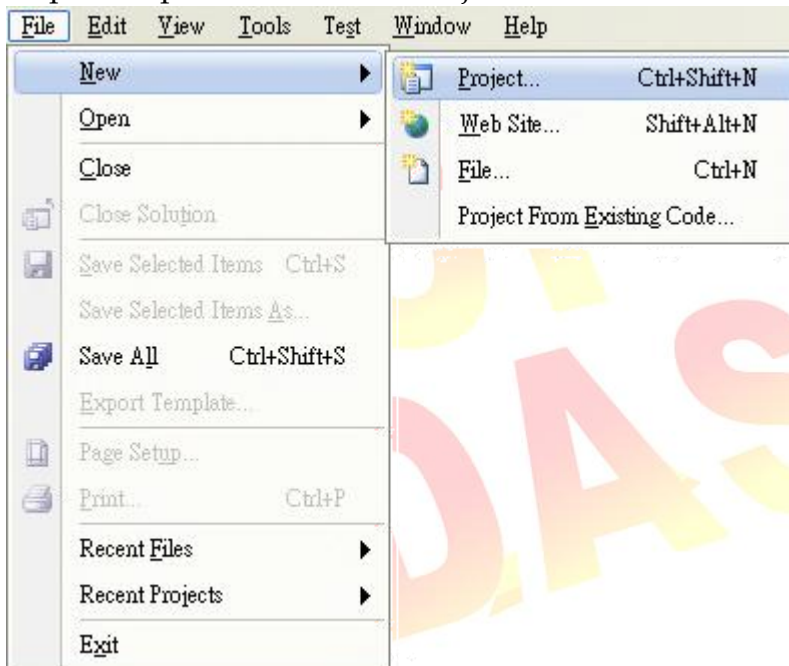
1. Create a project :

Step 1 : Execution Visual Studio 2008

Visual Studio 2008



Step 2 : Tap File → NEW → Project



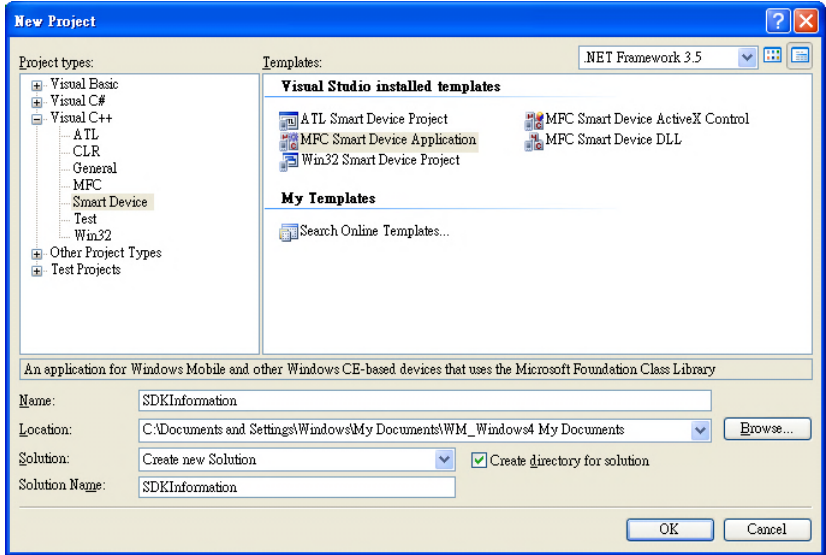
Classification	System and Application FAQ on WinCE PAC				No.	4-005-00	
Author	Aileex_Do	Version	1.0.3	Date	2015/11/24	Page	14/23

Step 3 : Select “Visual C++” under “Project types”, then choice “Smart Device”.

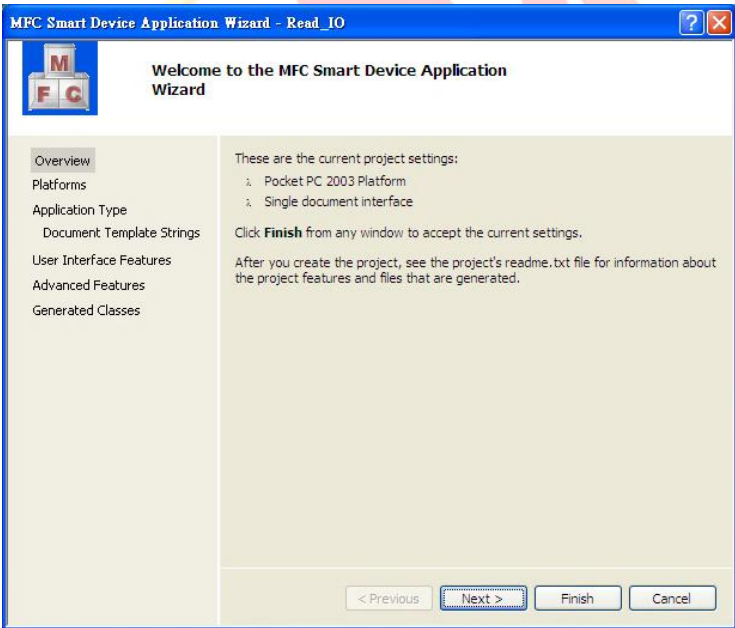
Step 4 : Tap “MFC Smart Device Application” at “Templates”.

Step 5 : Enter your project name then click “OK”.

We type “SDKInformation” here , and you can select the location what you like.

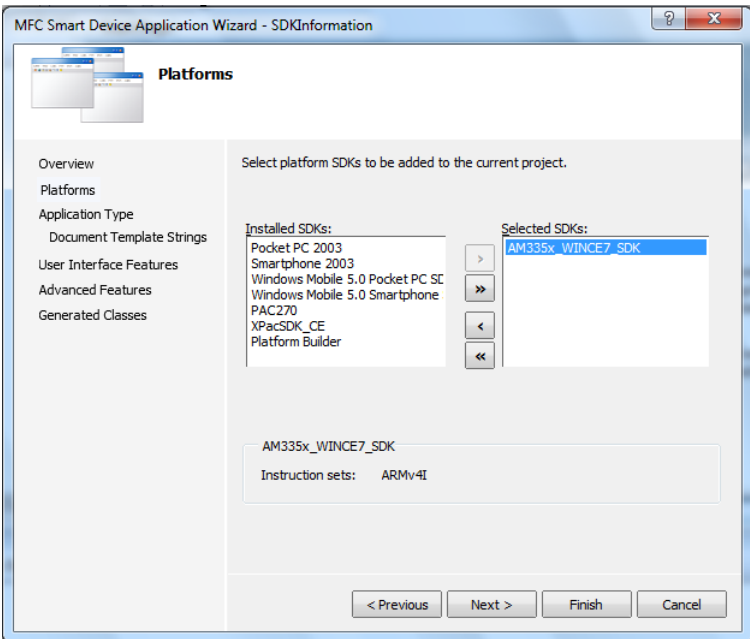


Step 6 : Tap “Next >”

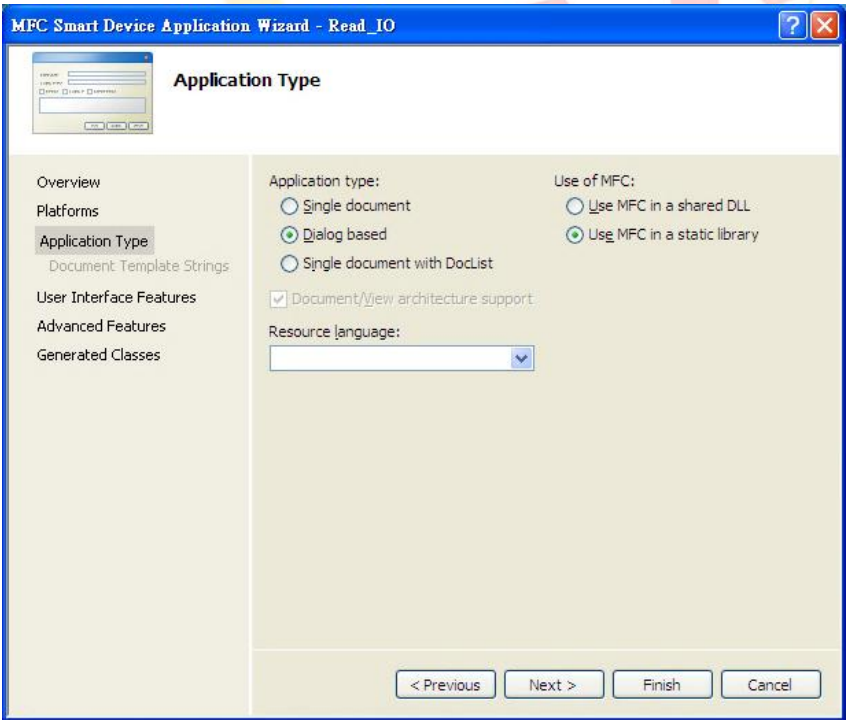


Classification	System and Application FAQ on WinCE PAC				No.	4-005-00	
Author	Aileex_Do	Version	1.0.3	Date	2015/11/24	Page	15/23

Step 7 : Add "AM335x_WINCE7_SDK" to your project.

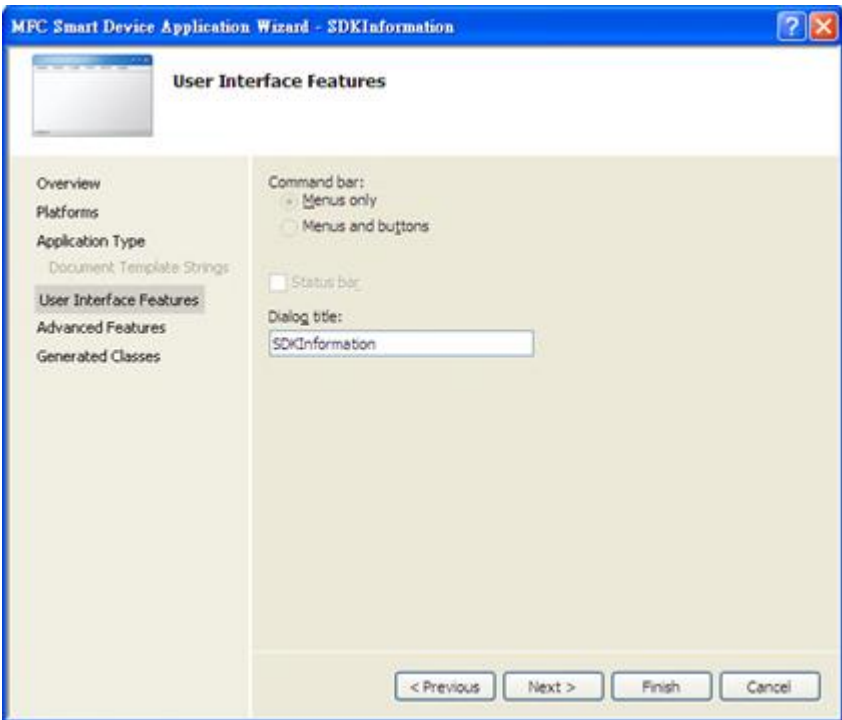


Step 8 : Select "Dialog based", then tap "Next >".

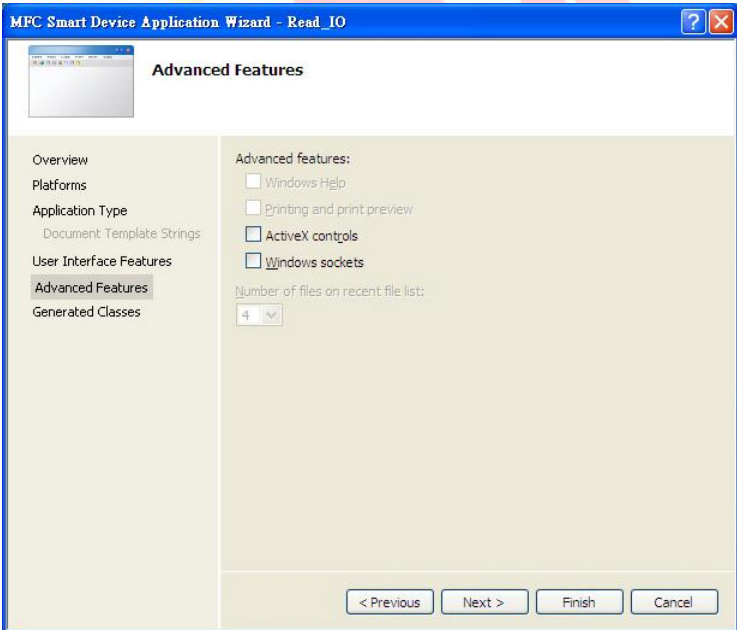


Classification	System and Application FAQ on WinCE PAC				No.	4-005-00	
Author	Aileex_Do	Version	1.0.3	Date	2015/11/24	Page	16/23

Step 9 : Tap “Next >”.

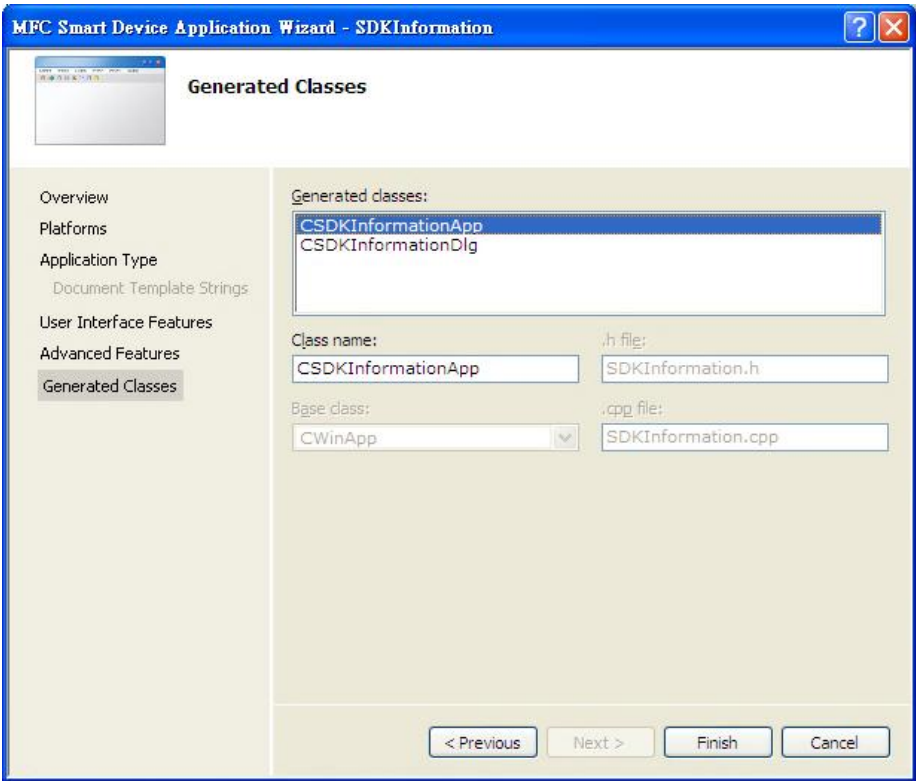


Step 10 : tap “Next”.



Classification	System and Application FAQ on WinCE PAC				No.	4-005-00	
Author	Aileex_Do	Version	1.0.3	Date	2015/11/24	Page	17/23

Step 11 : Tap “Finish”.

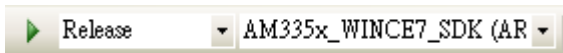


Classification	System and Application FAQ on WinCE PAC				No.	4-005-00	
Author	Aileex_Do	Version	1.0.3	Date	2015/11/24	Page	18/23

2. Setting Platform :

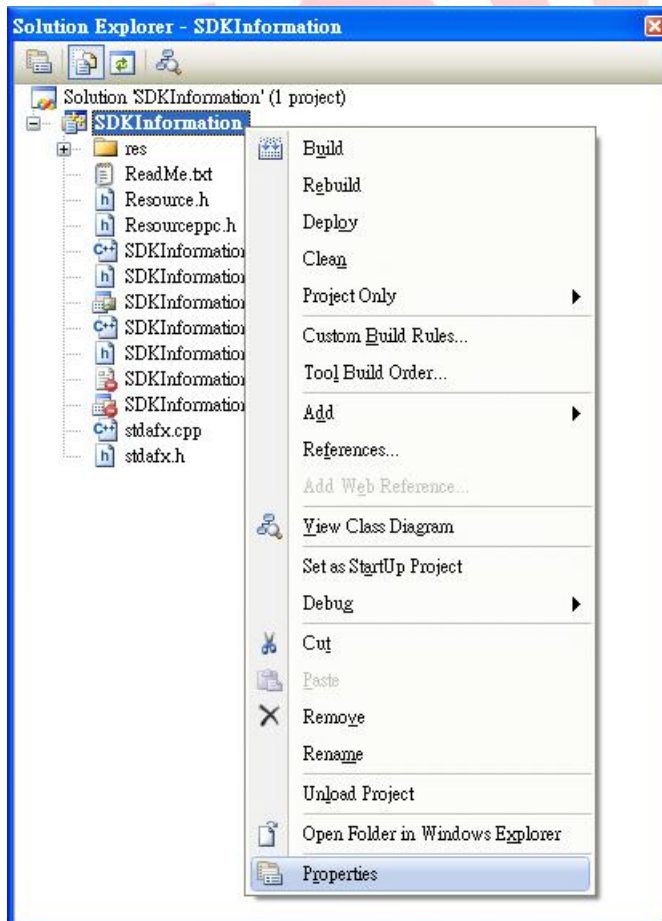
Remember to conform that the platform and the device's compatibility before download the application to device.

Select "Release" at debug tool list, and "AM335x_WinCE7_SDK" at Pocket PC 2003 (ARMV4).



3. Add PACSDK :

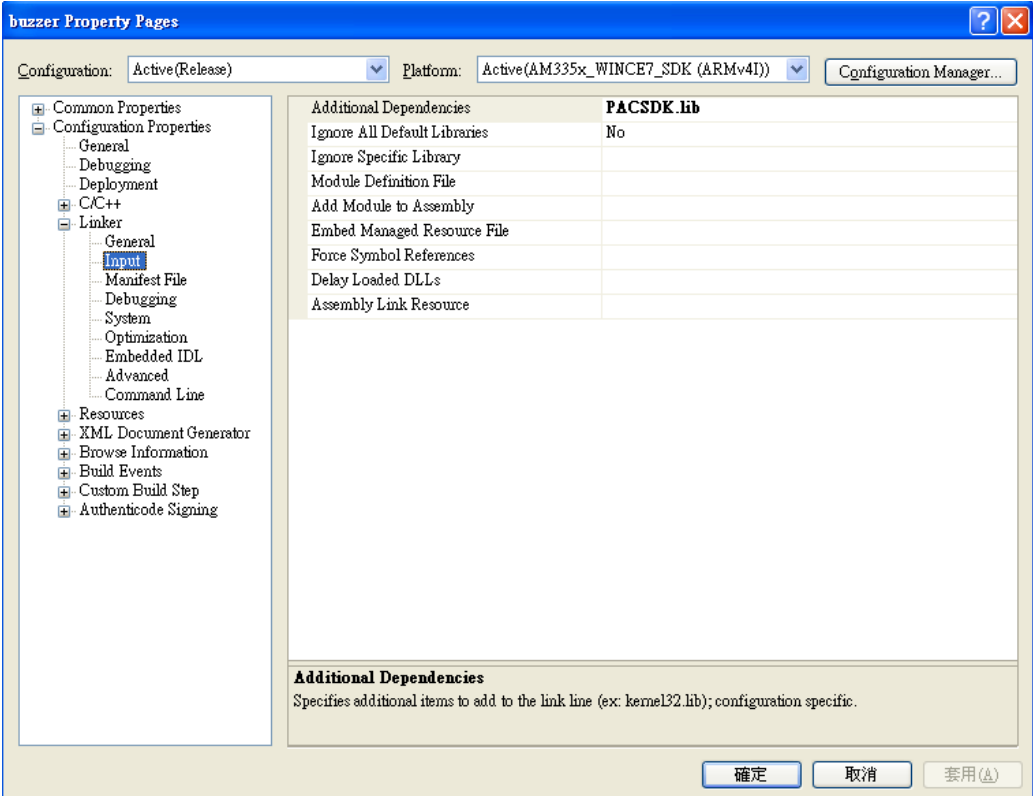
Step 1 : Right tap the project name under "Solution Explorer", and click "Properties".



Classification	System and Application FAQ on WinCE PAC				No.	4-005-00	
Author	Aileex_Do	Version	1.0.3	Date	2015/11/24	Page	19/23

Step 2 : At left form, expansion "Configuration Properties", find "Linker", then tap "Input".

Step 3 : Type "PACSDK.lib" at the "Additional Dependencies".

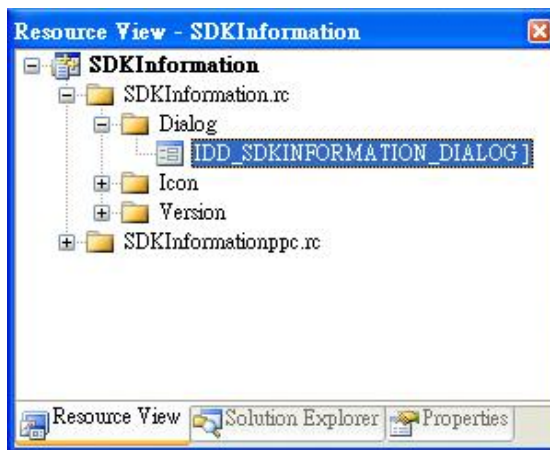


Classification	System and Application FAQ on WinCE PAC				No.	4-005-00	
Author	Aileex_Do	Version	1.0.3	Date	2015/11/24	Page	20/23

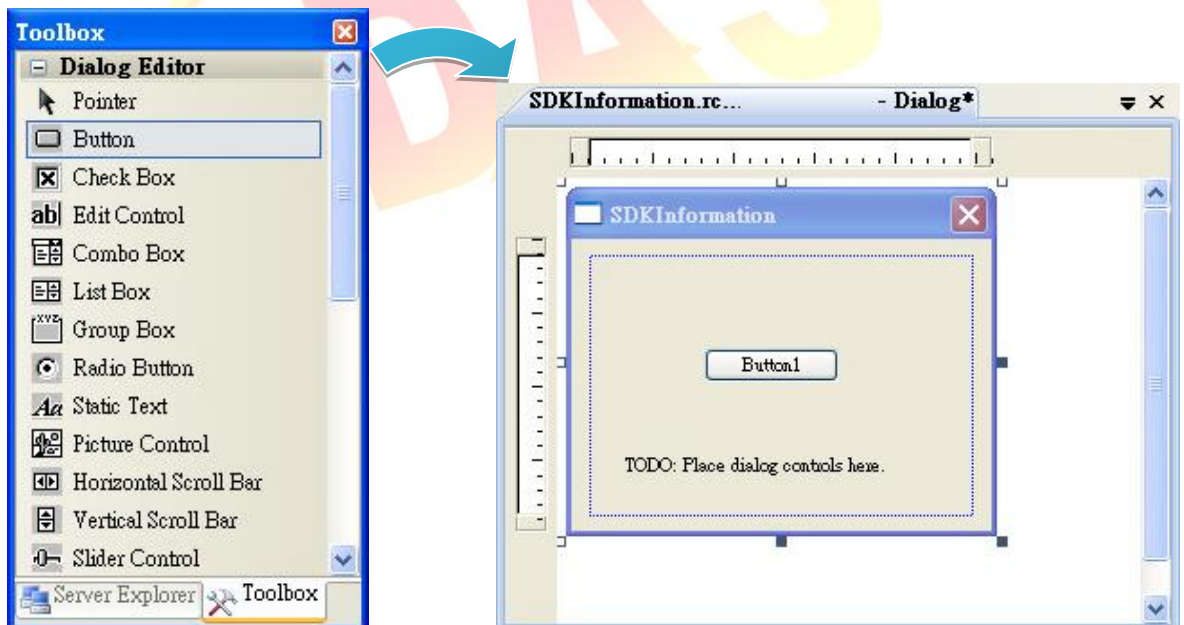
4. Add control item :

You can add and pull any control item that what and where you want, And modify it's property.

Step 1 : Expansion the project name at "Resource View" , then find the "Dialog", expansion it and double click "IDD_SDKINFORMATION_DIALOG" to show the form.

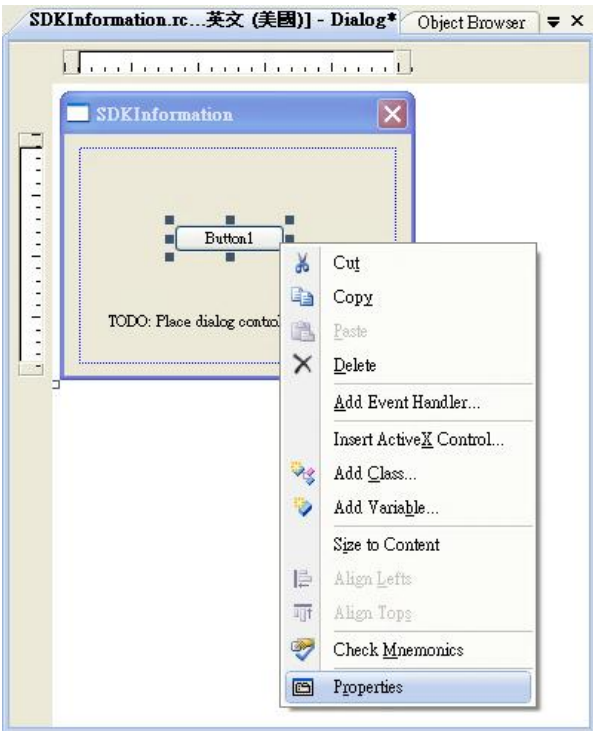


Step 2 : Pull the Button from the "Toolbox" to the form.

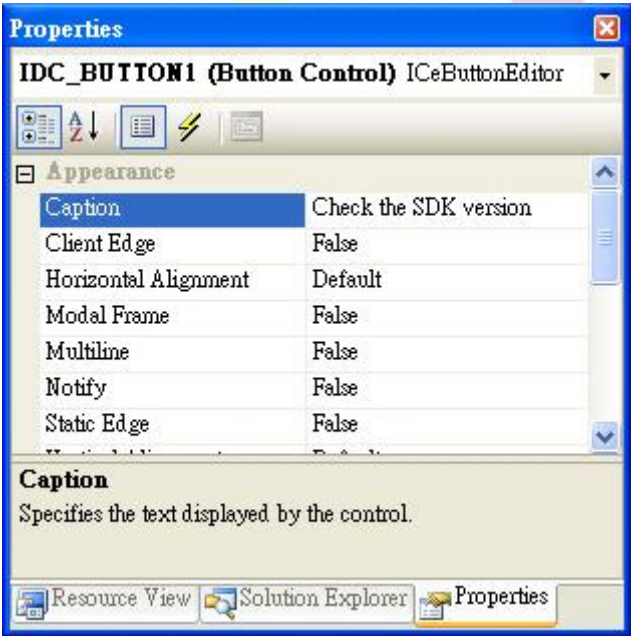


Classification	System and Application FAQ on WinCE PAC				No.	4-005-00	
Author	Aileex_Do	Version	1.0.3	Date	2015/11/24	Page	21/23

Step 3 : Right click the button, then tap the "Properties".



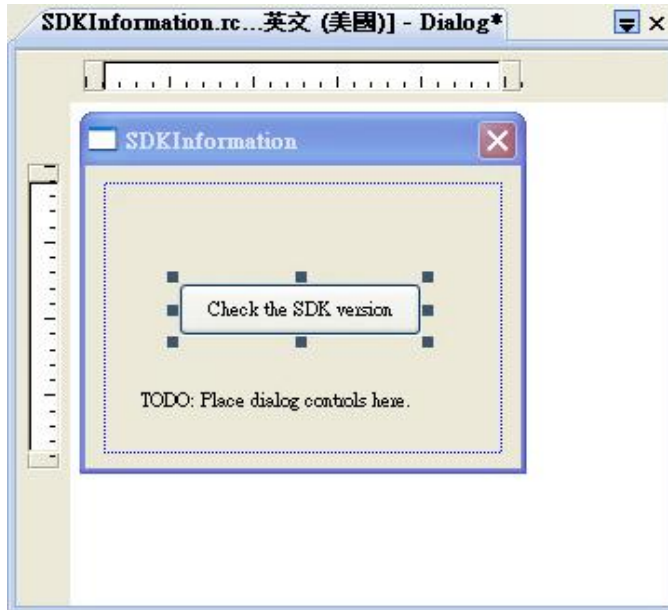
Step 4 : Type "Check the SDK version" in "Caption".



Classification	System and Application FAQ on WinCE PAC				No.	4-005-00	
Author	Aileex_Do	Version	1.0.3	Date	2015/11/24	Page	22/23

5. Add event :

Step 1 : Double click the button.



Step 2 : Type following code at the area like the picture :

```
char sdk_version[32];
TCHAR buf[32];
pac_GetSDKVersion(sdk_version);
pac_AnsiToWideString(sdk_version, buf);
MessageBox(buf,0,MB_OK);
```

```
void CSDKInformationDlg::OnBnClickedButton1()
{
    // TODO: Add your control notification handler code here
    char sdk_version[32];
    TCHAR buf[32];
    pac_GetSDKVersion(sdk_version);
    pac_AnsiToWideString(sdk_version, buf);
    MessageBox(buf,0,MB_OK);
}
```

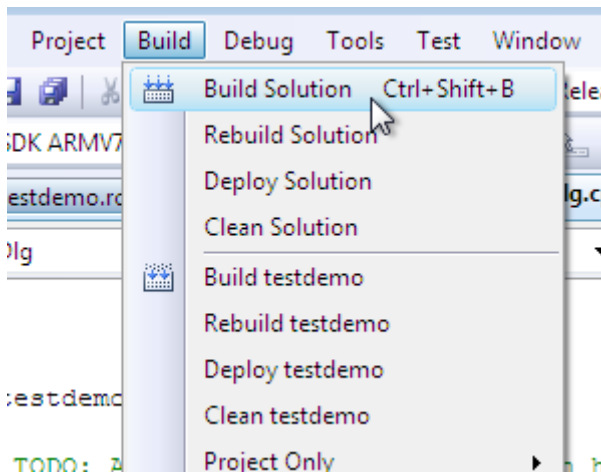
Classification	System and Application FAQ on WinCE PAC				No.	4-005-00	
Author	Aileex_Do	Version	1.0.3	Date	2015/11/24	Page	23/23

Step 3 : Add "PACSDK.h" at header like the picture.

```
#include "PACSDK.h"
```

```
#include "stdafx.h"
#include "SDKInformation.h"
#include "SDKInformationDlg.h"
#include "PACSDK.H"
```

Step 4 : Build it.



Step 5 : Now your first program has been build and ready to execution. You can find the file at the path :
 (project file)\(project name)\AM335x_WINCE7_SDK(ARMv4I)\Release\(project name).exe