

Classification	System and Application FAQ on WinCE PAC				No.	4-02-00	
Author	Tunglu-Yu	Version	1.0.0	Date	2010/2/12	Page	1/14

How to reinstall the eboot by a download cable

Applies to:

Platform	OS version	WinPAC/ViewPAC utility version
WP-8x3x	All versions	All versions
WP-8x4x	All versions	All versions
VP-25W1	All versions	All versions
VP-23W1	All versions	All versions
VP-23W1	All versions	All versions

If the WinPAC/ViewPAC can not boot and OS can not be updated by the EShell, the eBoot may be damaged or lost. Then you have to use the download cable to re-install the eBoot. When the eBoot is installed well, the EShell will be able to communicate with the eBoot to update the OS through the Ethernet.

To update the eboot by a download cable, perform the following steps:

Step 1: Download the “Update_Eboot_Tool” folder from CD: \napdos\wp-8x4x_ce50\pc_tools\ or ftp://ftp.icpdas.com.tw/pub/cd/winpac/napdos/wp-8x4x_ce50/pc_tools/ and the latest version of the eboot to the “Update_Eboot_Tool” folder.

Tips & Warnings



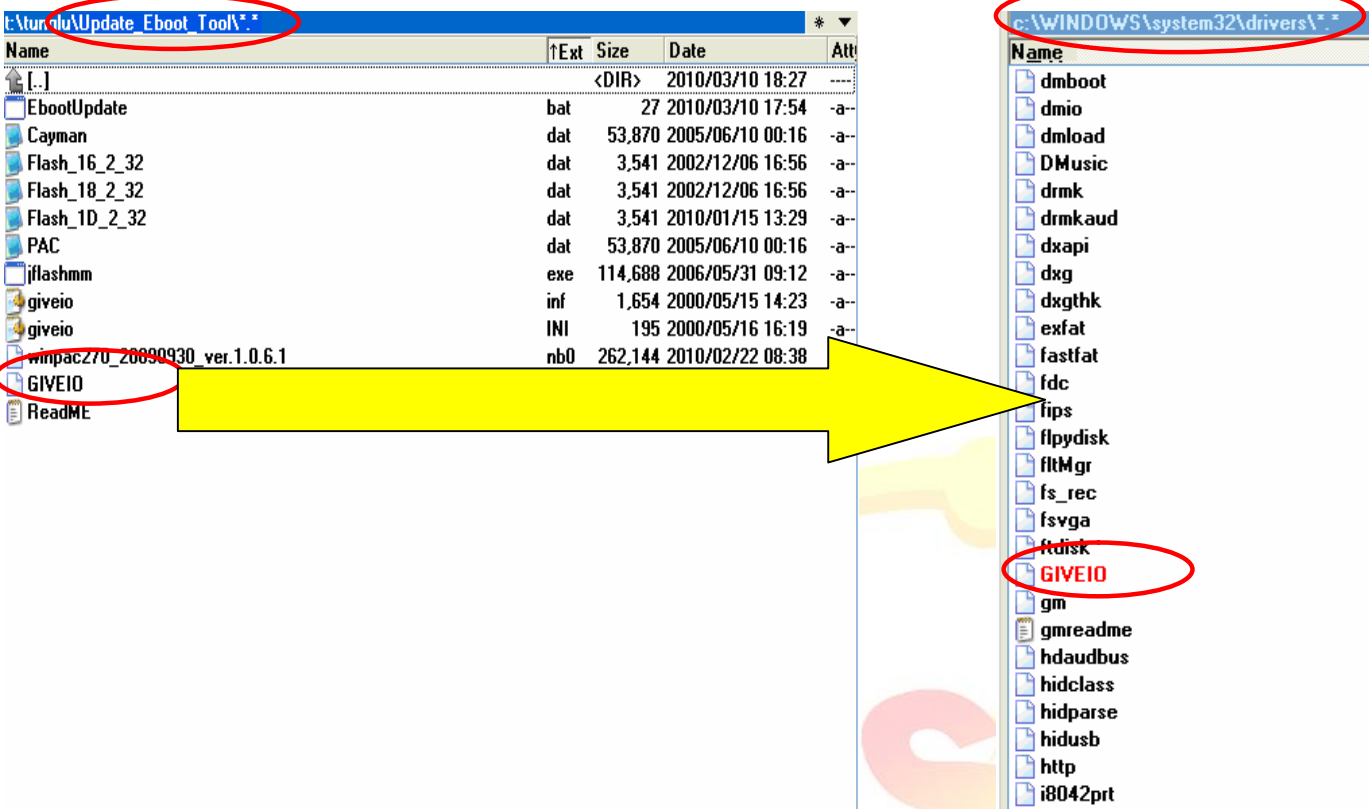
The location of latest version of eBoot for difference devices:

1. WP-8x4x is in CD:\napdos\wp-8x4x_ce50\os_image\eboot\ or ftp://ftp.icpdas.com.tw/pub/cd/winpac/napdos/wp-8x4x_ce50/os_image/eboot/
2. WP-8x3x is in CD:\napdos\wp-8x3x_ce50\os_image\eboot\ or [“ftp://ftp.icpdas.com.tw/pub/cd/winpac/napdos/wp-8x3x_ce50/os_image/eboot/”](ftp://ftp.icpdas.com.tw/pub/cd/winpac/napdos/wp-8x3x_ce50/os_image/eboot/)
3. VP-25W1 is in CD:\napdos\vp-2000_ce50\os_image\vp-25w1\eboot\ or [“ftp://ftp.icpdas.com.tw/pub/cd/winpac/napdos/vp-2000_ce50/os_image/vp-25w1/eboot/”](ftp://ftp.icpdas.com.tw/pub/cd/winpac/napdos/vp-2000_ce50/os_image/vp-25w1/eboot/)
4. VP-23W1 is in CD:\napdos\vp-2000_ce50\os_image\vp-23w1\eboot\ or [“ftp://ftp.icpdas.com.tw/pub/cd/winpac/napdos/vp-2000_ce50/os_image/vp-23w1/eboot/”](ftp://ftp.icpdas.com.tw/pub/cd/winpac/napdos/vp-2000_ce50/os_image/vp-23w1/eboot/)

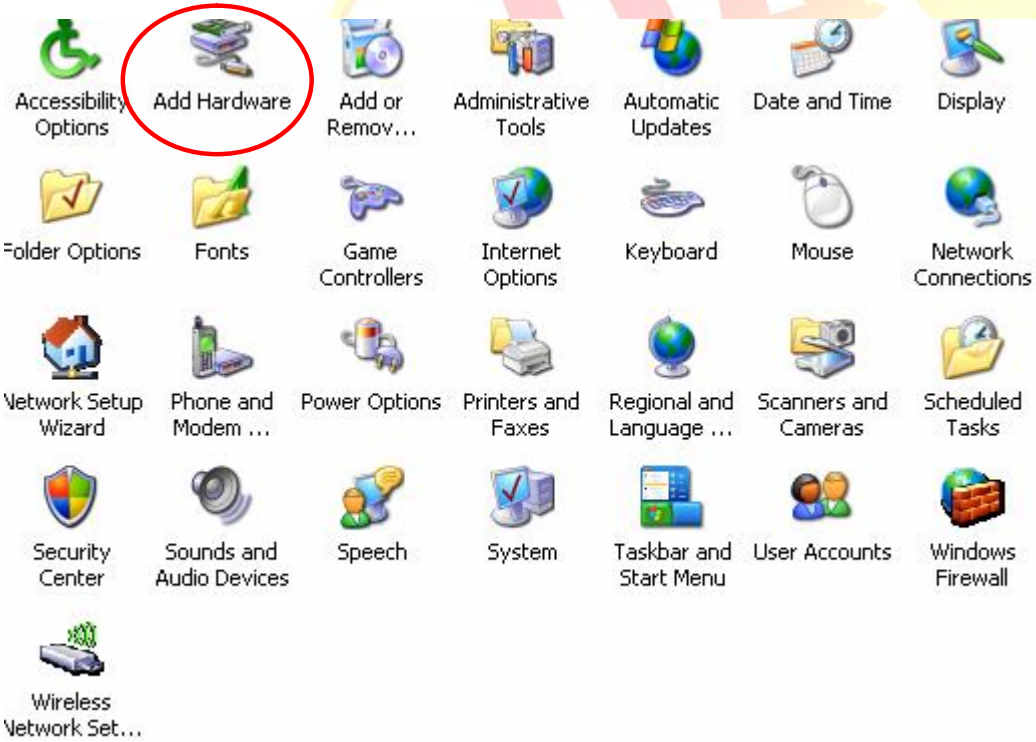
Classification	System and Application FAQ on WinCE PAC				No.	4-02-00	
Author	Tunglu-Yu	Version	1.0.0	Date	2010/2/12	Page	2/14

Step 2: Install "Giveio".

Copy the "Giveio.sys" from the "Update_Eboot_Tool" folder to the "c:\windows\system32\drivers" folder.



Step 3: Go to the Control panel and click the "Add Hardware" icon.

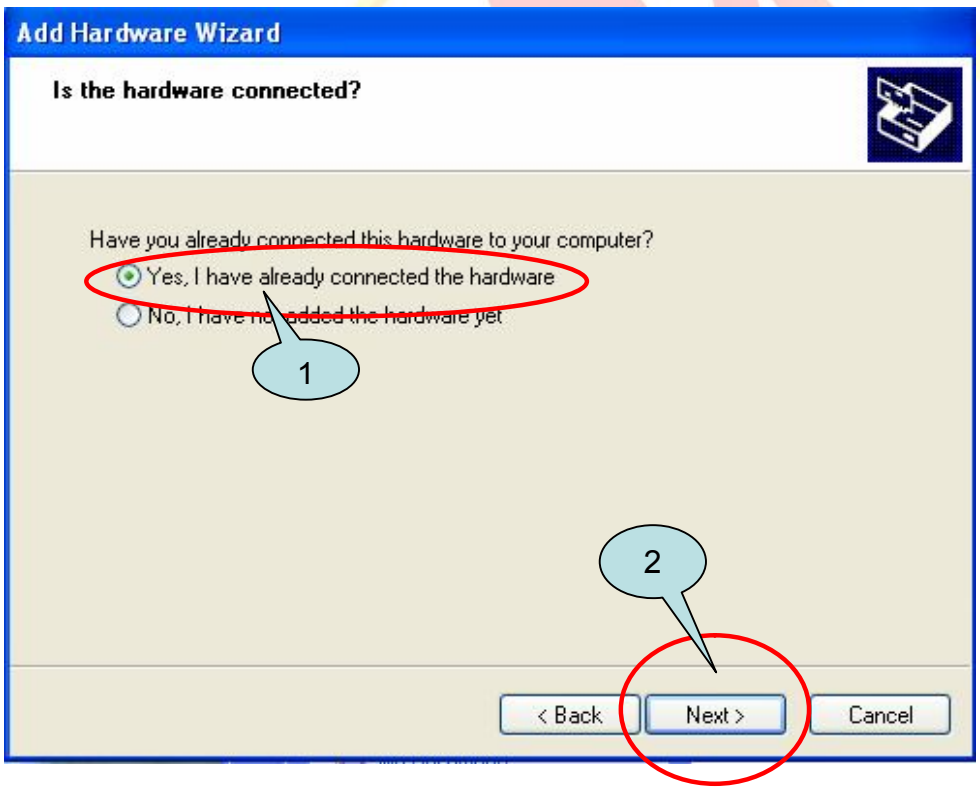


Classification	System and Application FAQ on WinCE PAC				No.	4-02-00	
Author	Tunglu-Yu	Version	1.0.0	Date	2010/2/12	Page	3/14

Step 4:

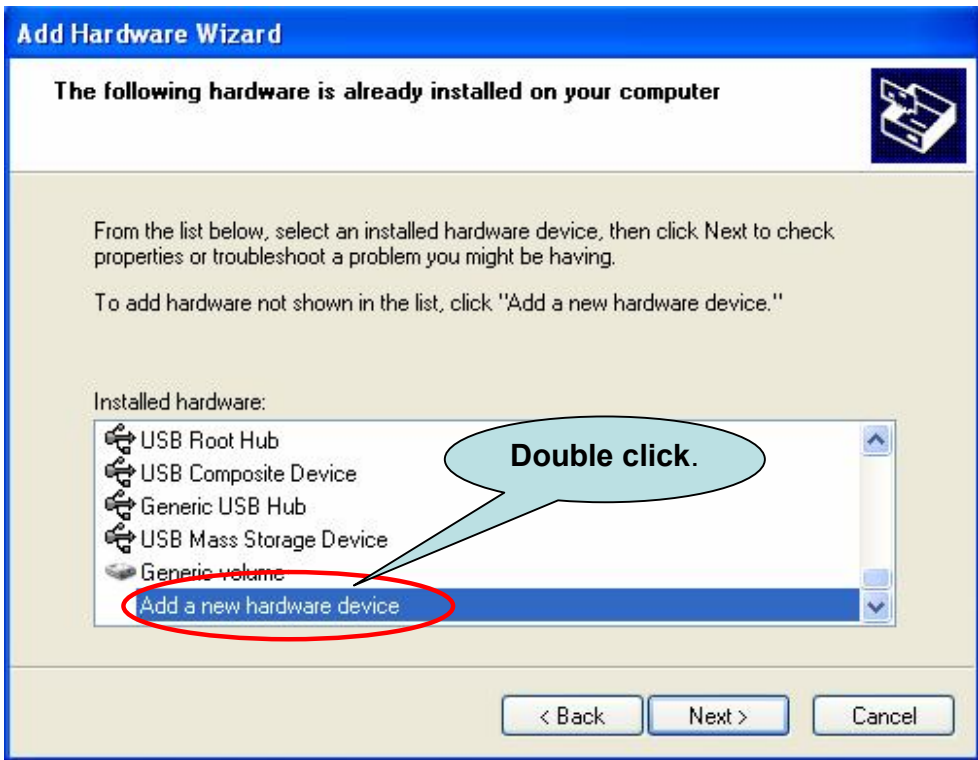


Step 5:

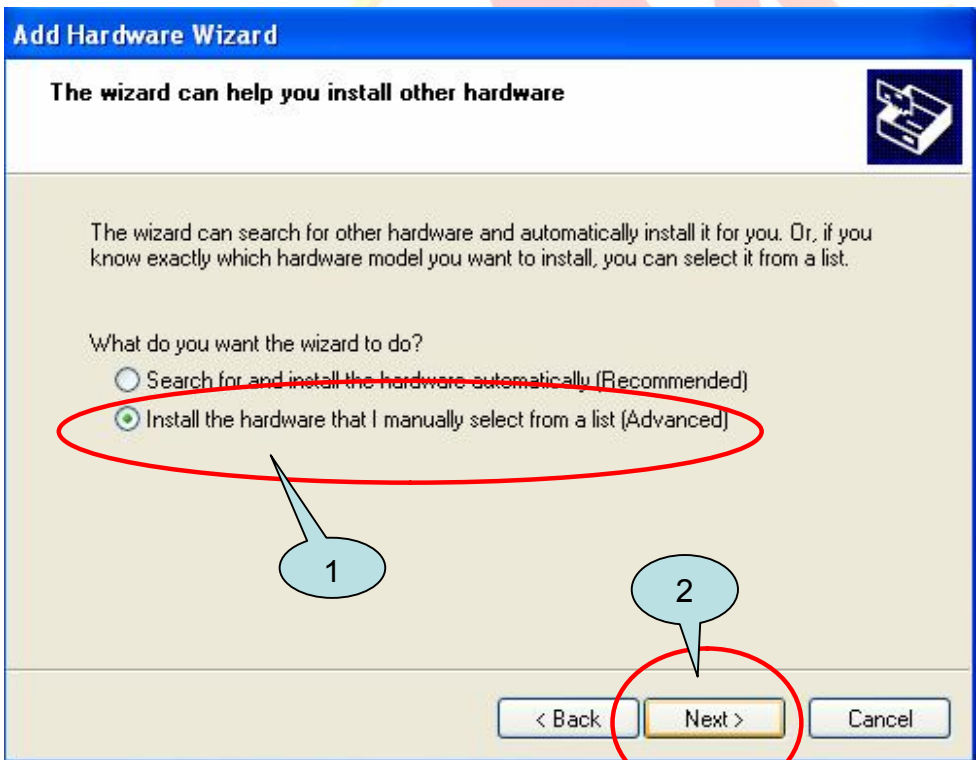


Classification	System and Application FAQ on WinCE PAC				No.	4-02-00	
Author	Tunglu-Yu	Version	1.0.0	Date	2010/2/12	Page	4/14

Step 6:

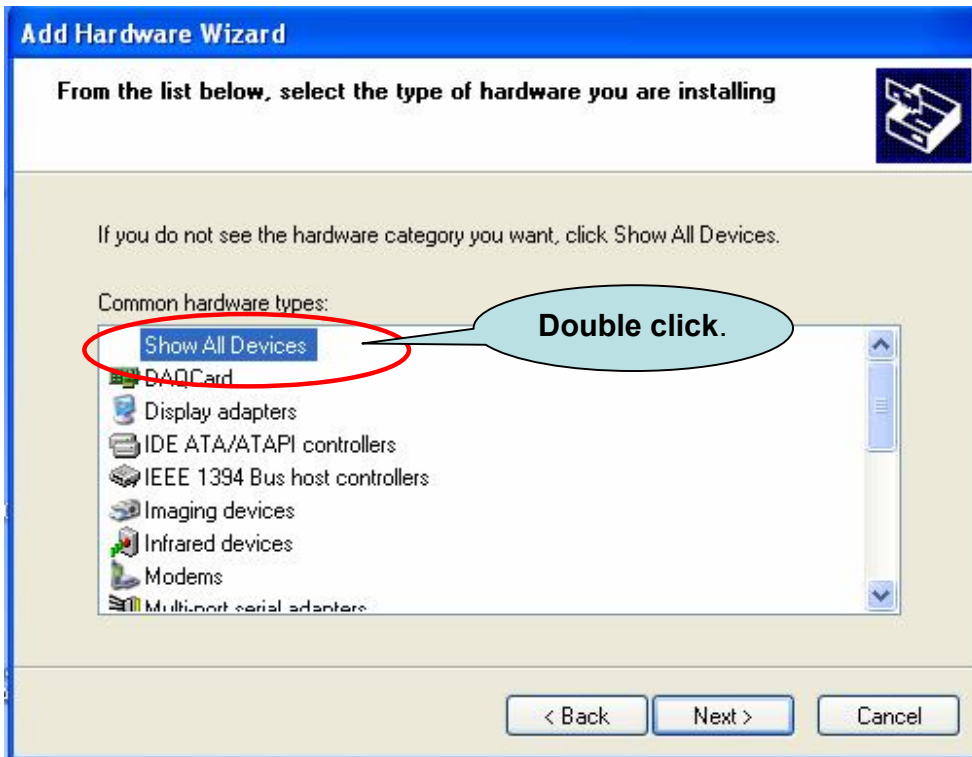


Step 7:

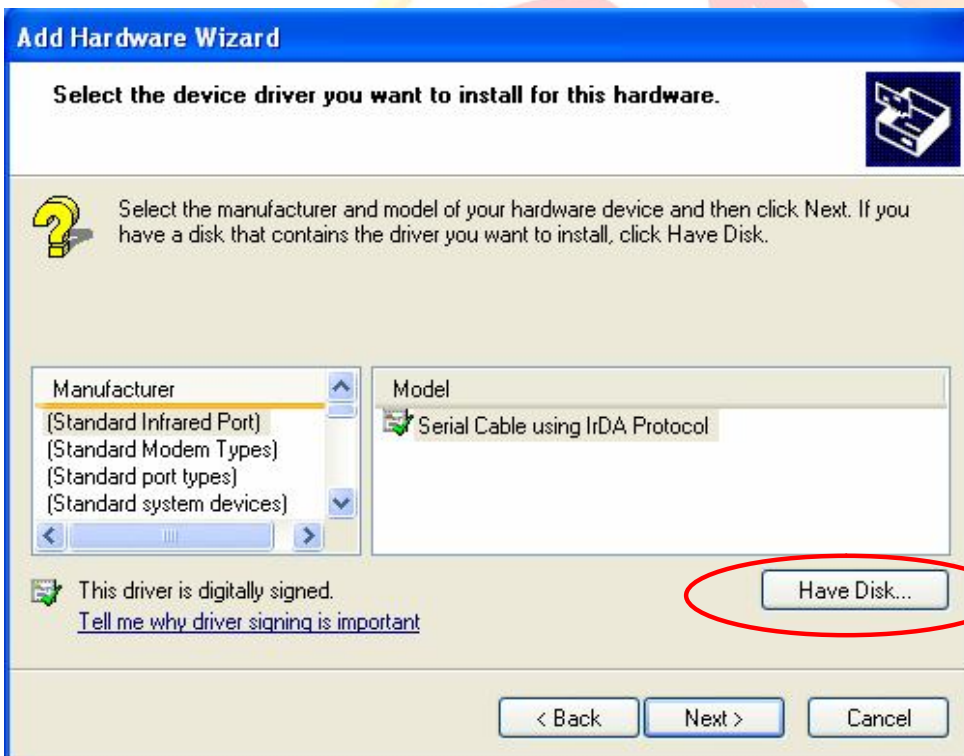


Classification	System and Application FAQ on WinCE PAC				No.	4-02-00	
Author	Tunglu-Yu	Version	1.0.0	Date	2010/2/12	Page	5/14

Step 8:

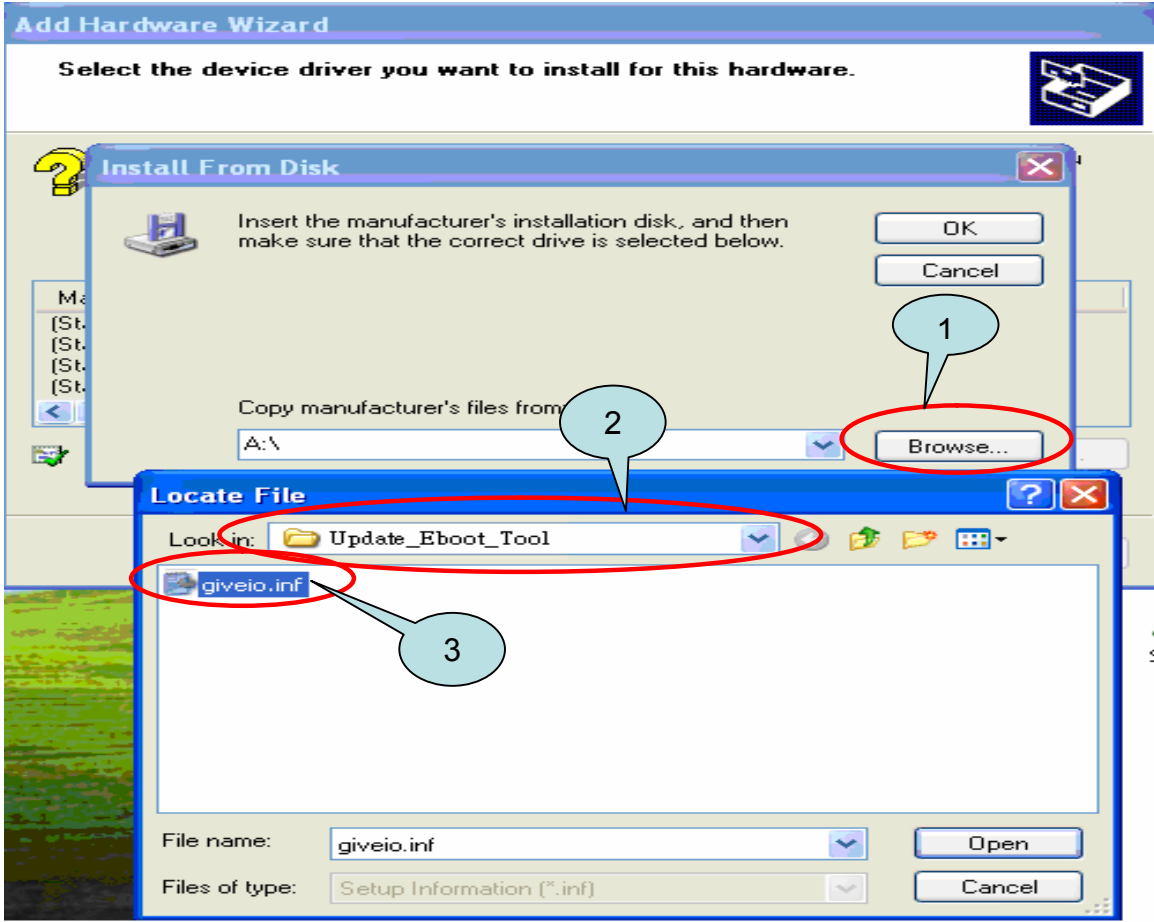


Step 9:

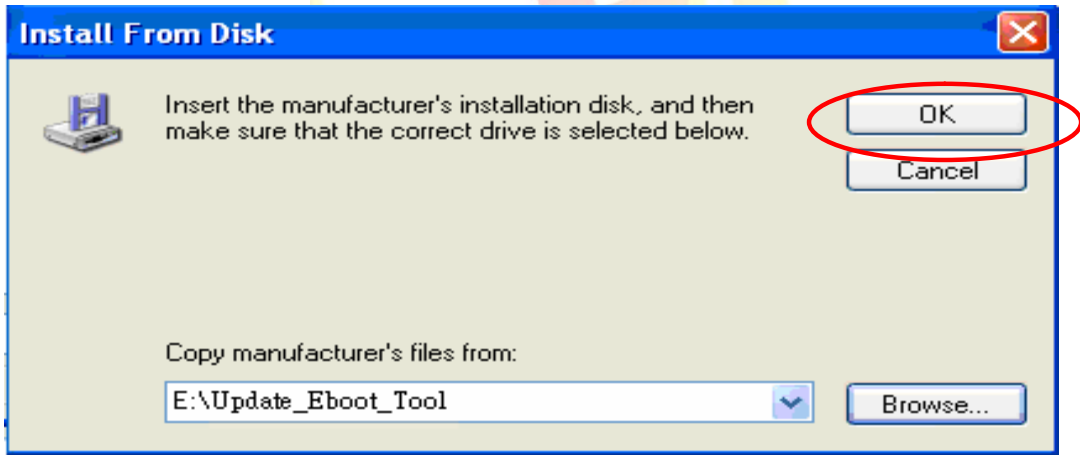


Classification	System and Application FAQ on WinCE PAC				No.	4-02-00	
Author	Tunglu-Yu	Version	1.0.0	Date	2010/2/12	Page	6/14

9.1: Click the “Browse” button to the “Update_Eboot_Tool” folder and click “giveio.inf”.



9.2:

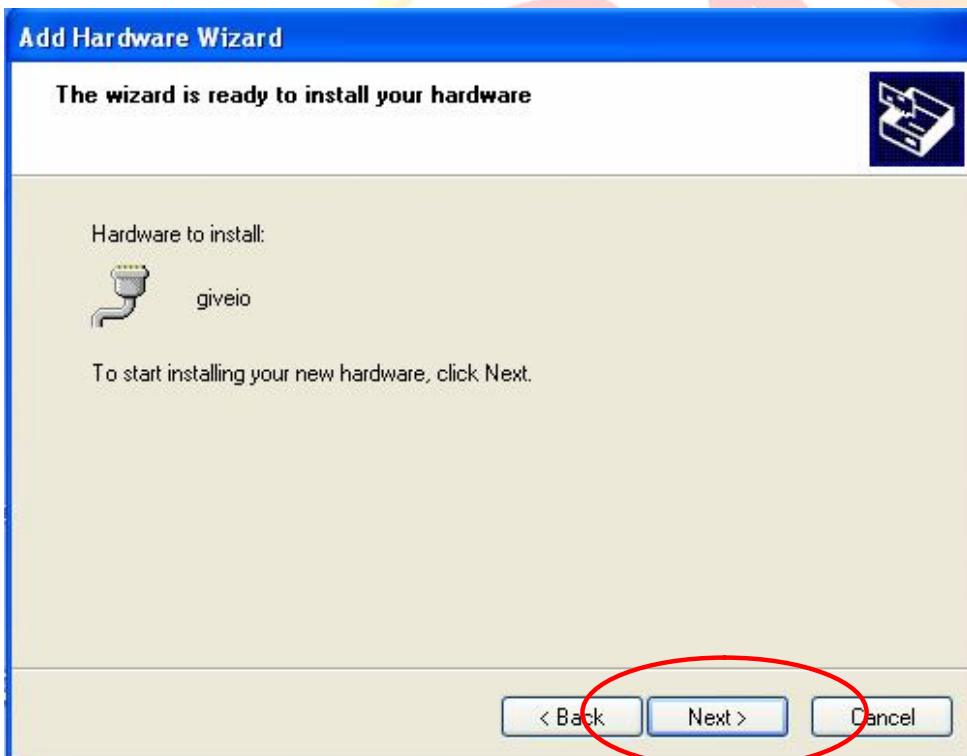


Classification	System and Application FAQ on WinCE PAC				No.	4-02-00	
Author	Tunglu-Yu	Version	1.0.0	Date	2010/2/12	Page	7/14

9.3:



Step 10:



Classification	System and Application FAQ on WinCE PAC				No.	4-02-00	
Author	Tunglu-Yu	Version	1.0.0	Date	2010/2/12	Page	8/14

Step 11:

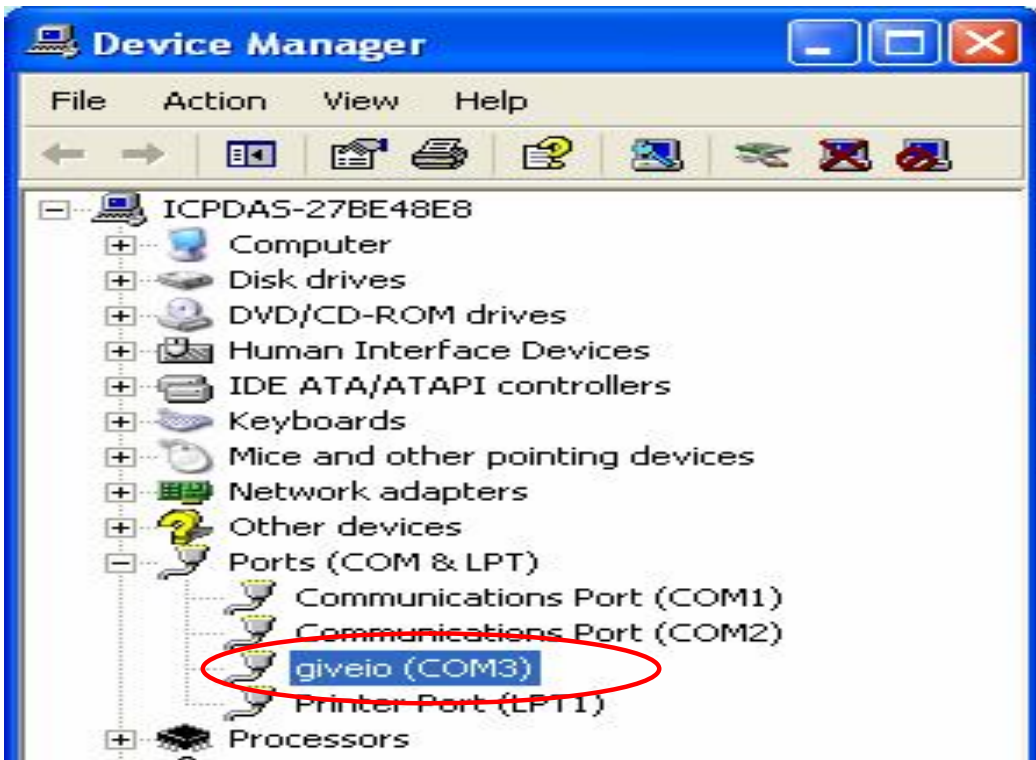


Step 12:

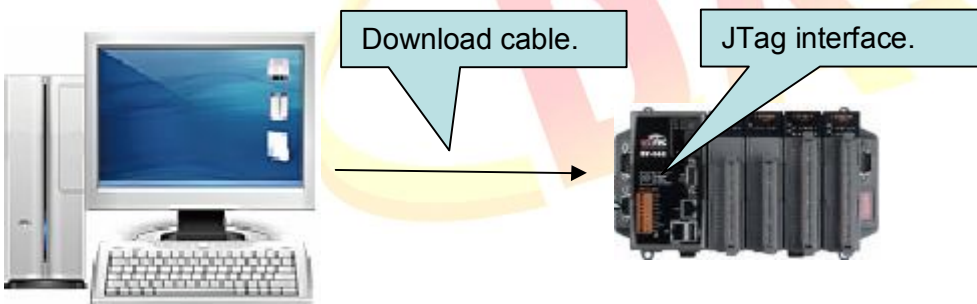


Classification	System and Application FAQ on WinCE PAC				No.	4-02-00	
Author	Tunglu-Yu	Version	1.0.0	Date	2010/2/12	Page	9/14

12.1: Run Device Manager and you can see the “giveio” device in Ports (COM&LPT).



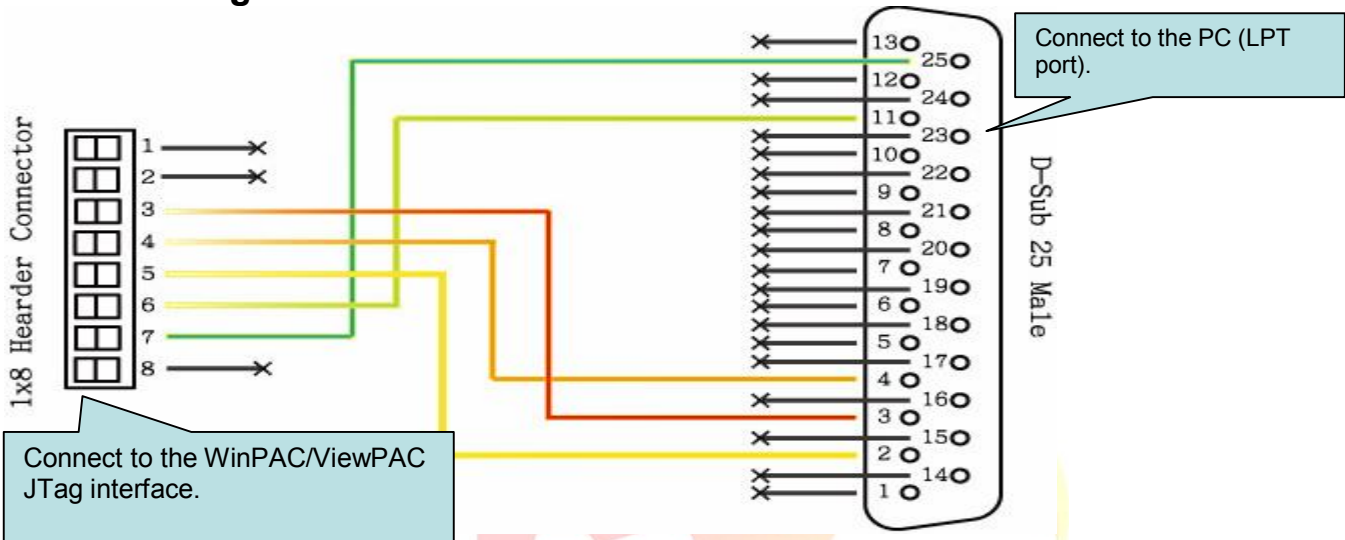
12.2: Connect the PC and WinPAC/ViewPAC by the download cable.



Classification	System and Application FAQ on WinCE PAC				No.	4-02-00	
Author	Tunglu-Yu	Version	1.0.0	Date	2010/2/12	Page	10/14

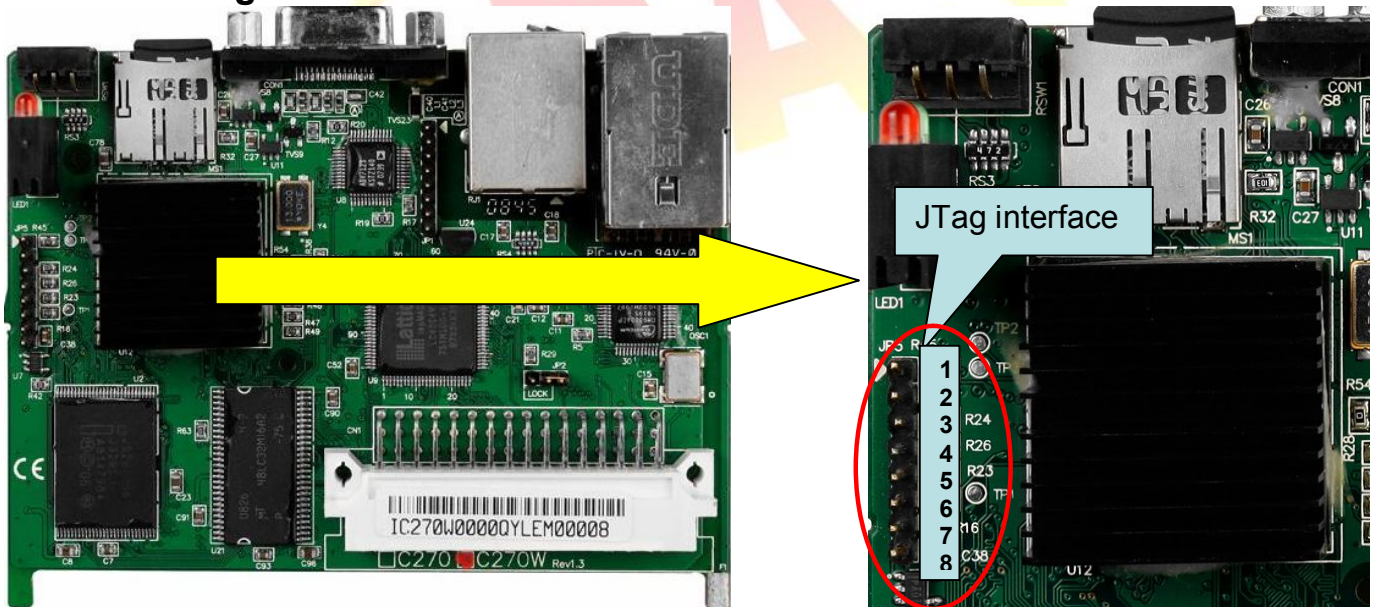
Tips & Warnings

⚠ Pin assignment of the download cable



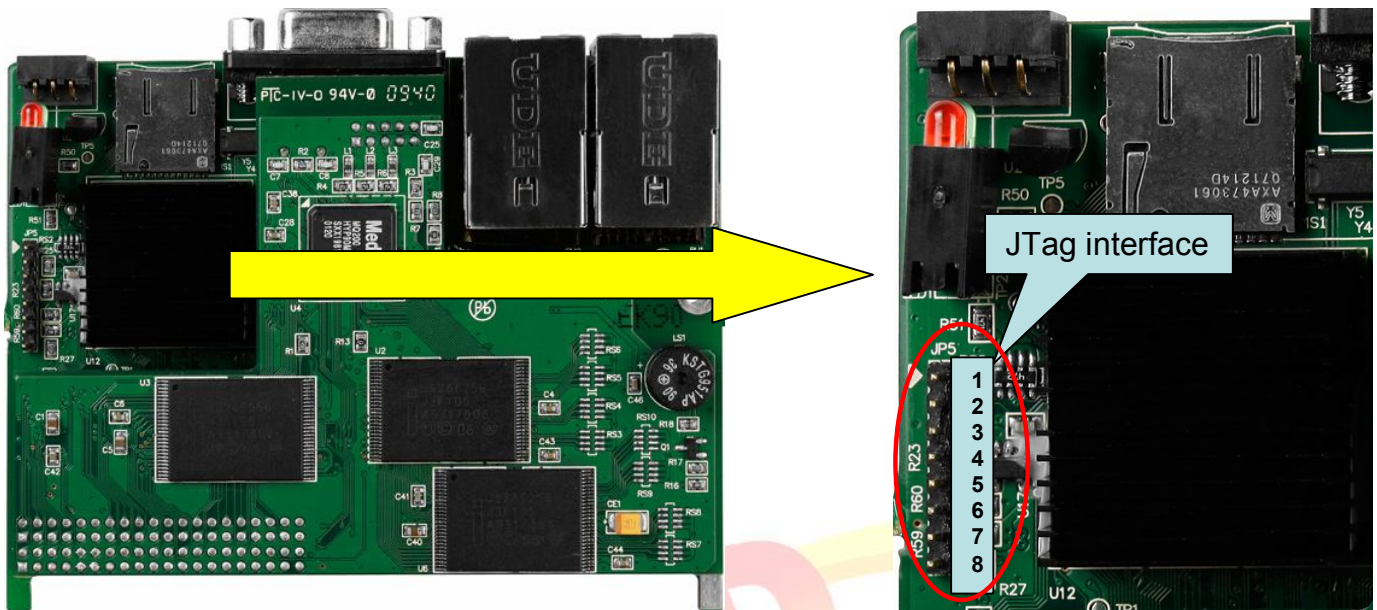
⚠ JTag interface on different devices.

WP-8x4x JTag interface

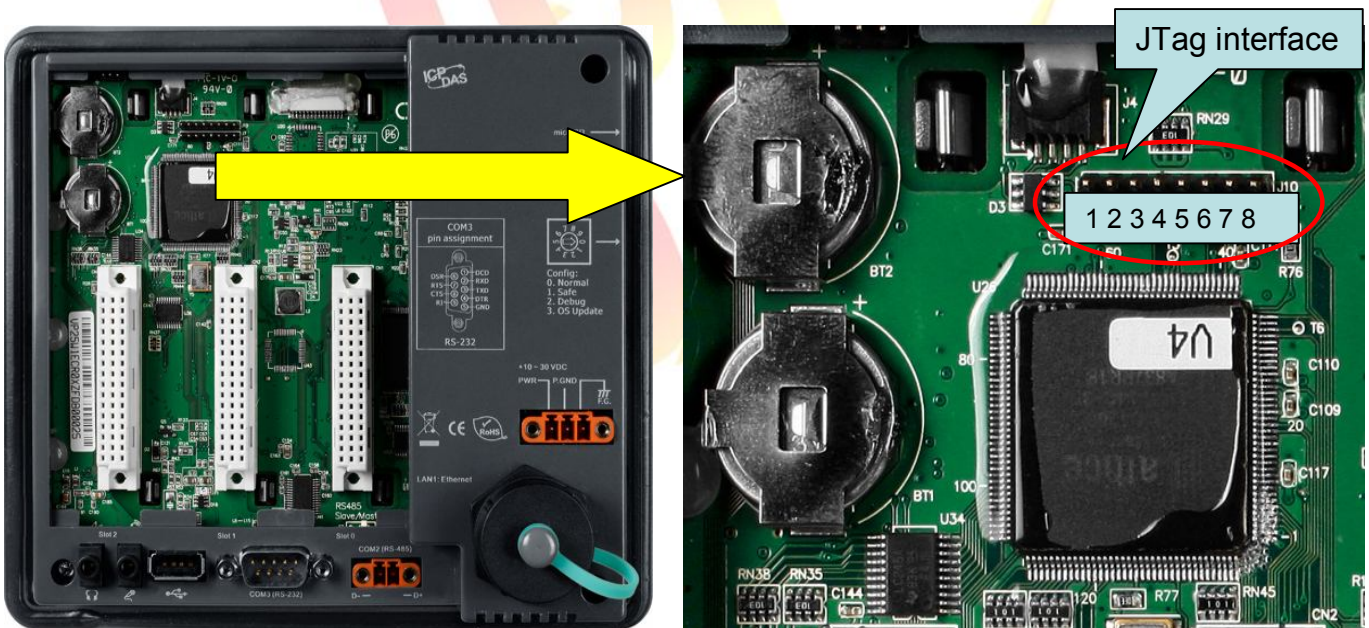


Classification	System and Application FAQ on WinCE PAC				No.	4-02-00	
Author	Tunglu-Yu	Version	1.0.0	Date	2010/2/12	Page	11/14

WP-8x3x JTag interface



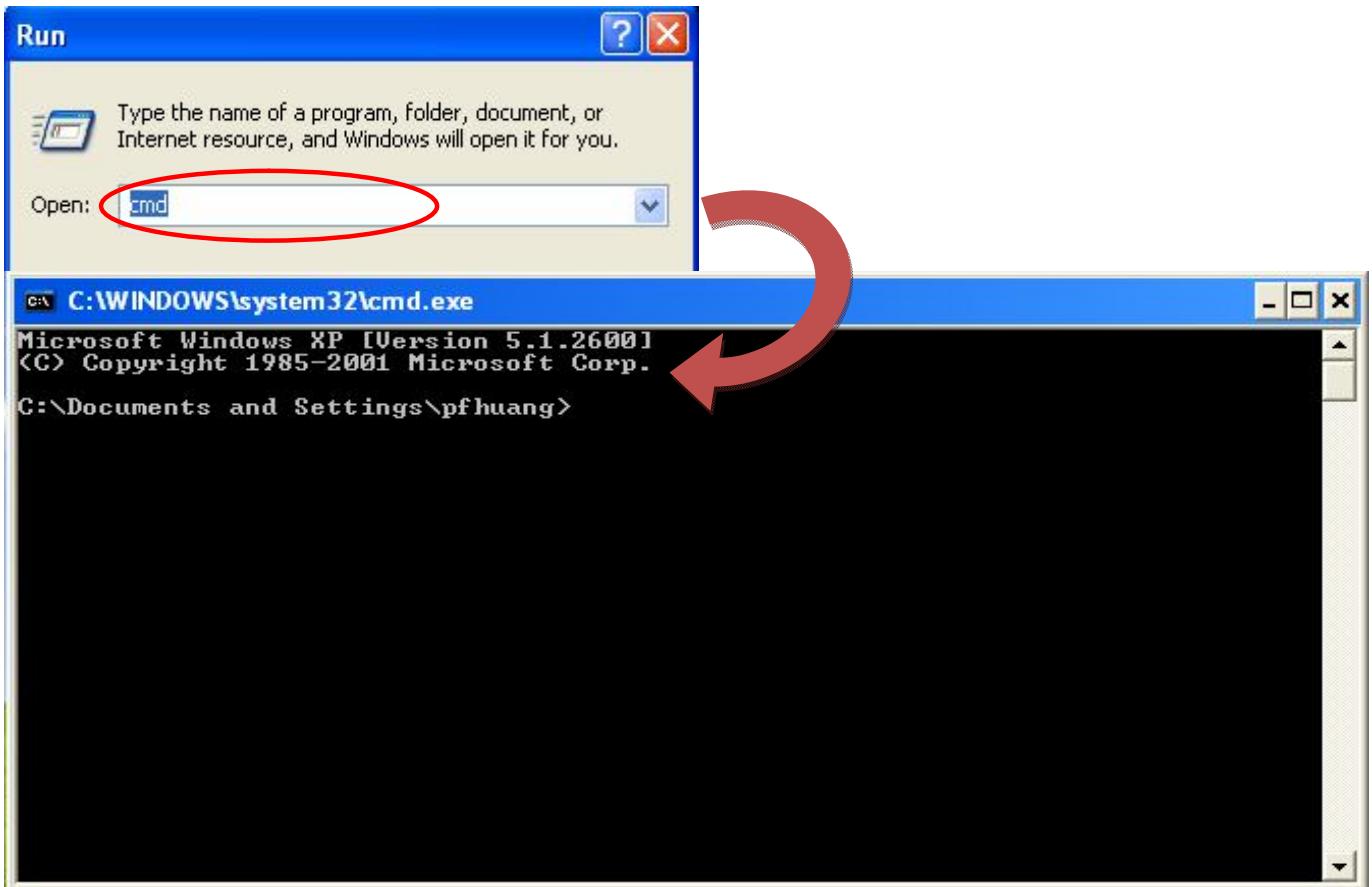
ViewPAC JTag interface



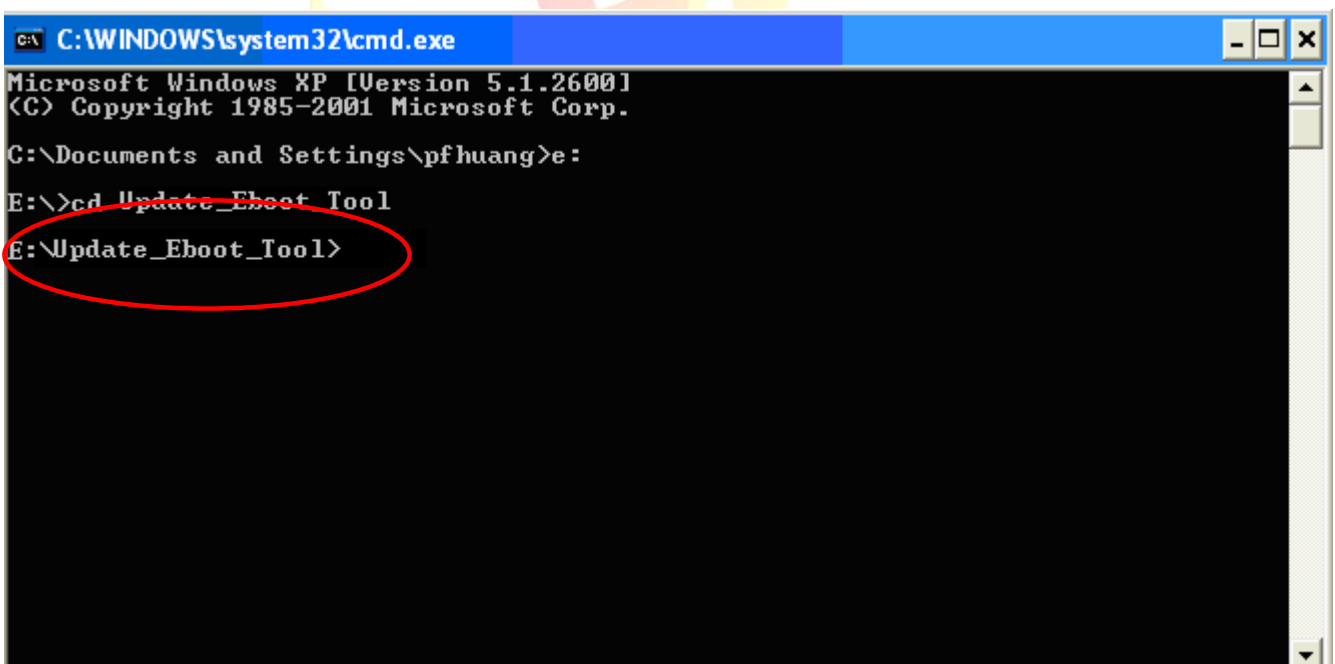
Classification	System and Application FAQ on WinCE PAC				No.	4-02-00	
Author	Tunglu-Yu	Version	1.0.0	Date	2010/2/12	Page	12/14

Step 13: Click start->Run

13.1: Enter “cmd” and click “Yes”.

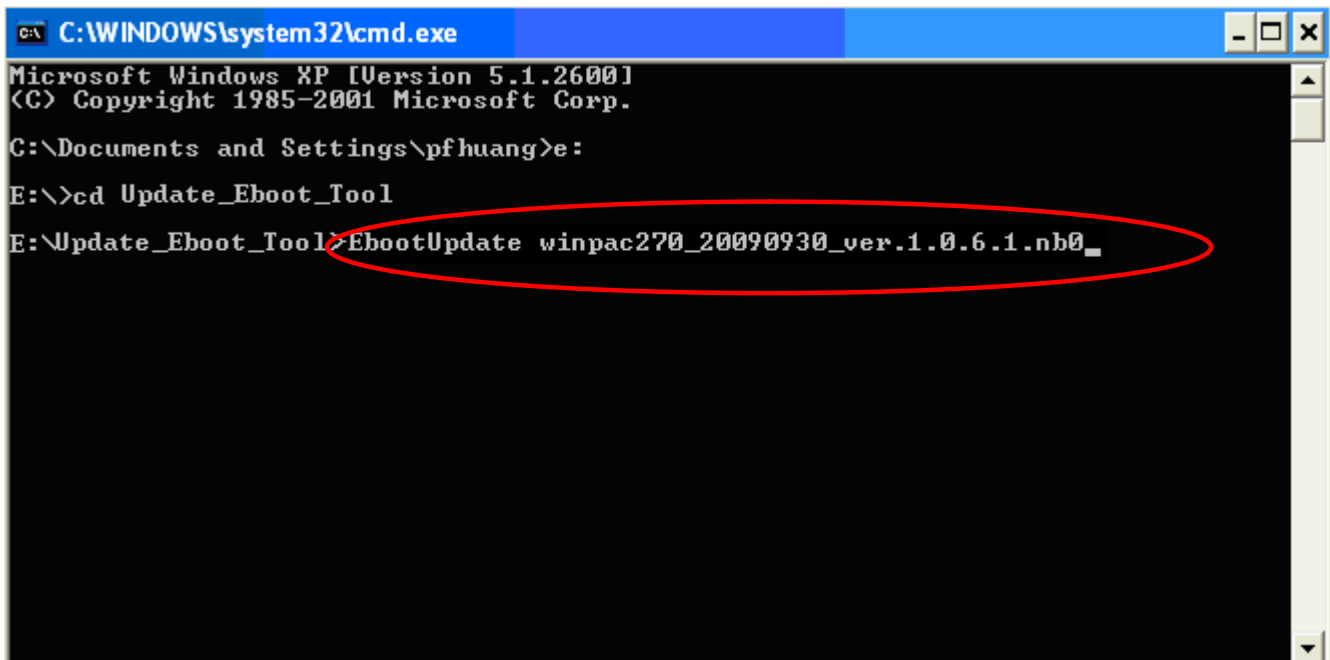


Step 14: Go to the “Update_Eboot_Tool” folder.



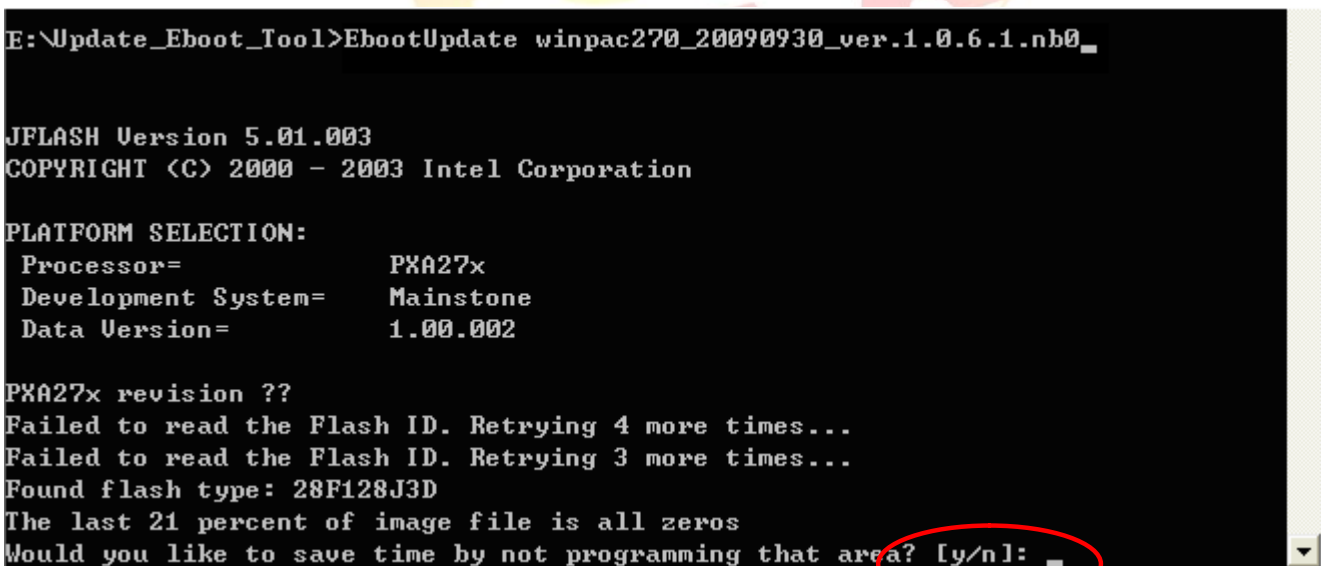
Classification	System and Application FAQ on WinCE PAC				No.	4-02-00	
Author	Tunglu-Yu	Version	1.0.0	Date	2010/2/12	Page	13/14

Step 15: Enter "EbootUpdate The name for the eboot update package (Example: winpac270_20090930_ver.1.0.6.1.nb0)".



```
C:\WINDOWS\system32\cmd.exe
Microsoft Windows XP [Version 5.1.2600]
(C) Copyright 1985-2001 Microsoft Corp.
C:\Documents and Settings\pfhuang>e:
E:\>cd Update_Eboot_Tool
E:\Update_Eboot_Tool>EbootUpdate winpac270_20090930_ver.1.0.6.1.nb0_
```

Step 16: Press "Y" and wait.



```
E:\Update_Eboot_Tool>EbootUpdate winpac270_20090930_ver.1.0.6.1.nb0_
JFLASH Version 5.01.003
COPYRIGHT (C) 2000 - 2003 Intel Corporation

PLATFORM SELECTION:
Processor= PXA27x
Development System= Mainstone
Data Version= 1.00.002

PXA27x revision ??
Failed to read the Flash ID. Retrying 4 more times...
Failed to read the Flash ID. Retrying 3 more times...
Found flash type: 28F128J3D
The last 21 percent of image file is all zeros
Would you like to save time by not programming that area? [y/n]:
```


Classification	System and Application FAQ on WinCE PAC				No.	4-02-00	
Author	Tunglu-Yu	Version	1.0.0	Date	2010/2/12	Page	14/14

Step 17: When you see “Programming done”.

Reboot WinPAC/viewPAC in boot mode “3” and reinstall the OS image by the Eshell.



Please refer “W4-01-02_how_to_update_OS_image_by_Eshell.pdf” for detailed steps.

```
C:\WINDOWS\system32\cmd.exe
Erasing block at address 0
Error, Block erase timed out

E:\Update_Eboot_Tool>EbootUpdate winpac270_20090930_ver.1.0.6.1.nb0_

JFLASH Version 5.01.003
COPYRIGHT (C) 2000 - 2003 Intel Corporation

PLATFORM SELECTION:
Processor=           PXA27x
Development System=  Mainstone
Data Version=       1.00.002

PXA27x revision ??
Found flash type: 28F128J3D
The last 21 percent of image file is all zeros
Would you like to save time by not programming that area? [y/n]: y
Erasing block at address 0
Starting programming
Using BUFFER programming mode...
Writing flash at hex address 32ac0, 99.35% done
Programming done
E:\Update_Eboot_Tool>
```