

Classification	System and Application FAQ on WinCE PAC				No.	4-004-00	
Author	Vic-Tsai	Version	1.0.0	Date	2010/4/15	Page	1/2

How to clear the device name listed on Eshell

Applies to:

Platform	OS version	WinPAC/ViewPAC utility version
WP-8x3x	All versions	All versions
WP-8x4x	All versions	All versions
VP-25W1	All versions	All versions
VP-23W1	All versions	All versions

Every time when Eshell searches a device, the device name will be added to a list without clearing. Therefore the list will be longer and longer (See "Diagram-1") and become difficult to recognize which one is the right choice.

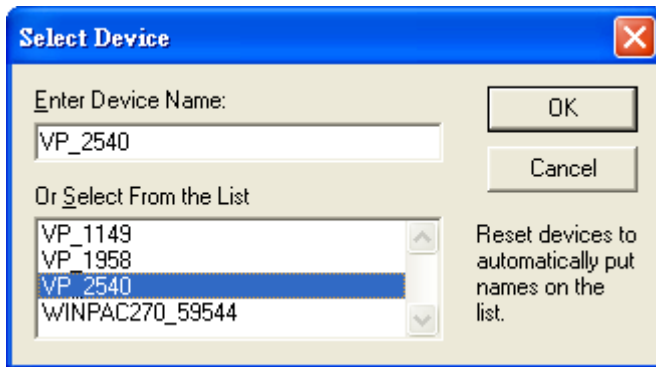


Diagram-1

The following is the solution:

Step 1: Copy "Eshell" folder to PC.

(There will be two files in it. One is ESHELL.EXE and another is registry_clear.exe)

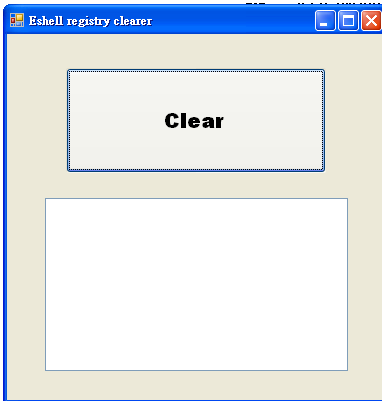
Download path:

CD:\napdos\wp-8x4x_ce50\PC_Tools\Eshell

http://ftp.icpdas.com/pub/cd/winpac/napdos/wp-8x4x_ce50/pc_tools/Eshell)

Step 2: Execute registry_clear.exe and click "Clear" button

Classification	System and Application FAQ on WinCE PAC				No.	4-004-00	
Author	Vic-Tsai	Version	1.0.0	Date	2010/4/15	Page	2/2



Step 3: After clearing device name, the Eshell windows shows to search device.

