

Classification	System and Application FAQ on WinCE PAC				No.	4-001-02	
Author	Tunglu-Yu	Version	1.0.0	Date	2010/2/12	Page	1/13

How to update OS image by Eshell (with DHCP server enabled)

Applies to:

Platform	OS version	WinPAC/ViewPAC utility version
WP-8x3x	All versions	All versions
WP-8x4x	All versions	All versions
VP-25W1	All versions	All versions
VP-23W1	All versions	All versions

If you do not have DHCP server enabled on the network, please go to page10.

Before updates OS, Please do below acts.

1. Preparation of below devices.

Monitor/VGA line

USB Hub

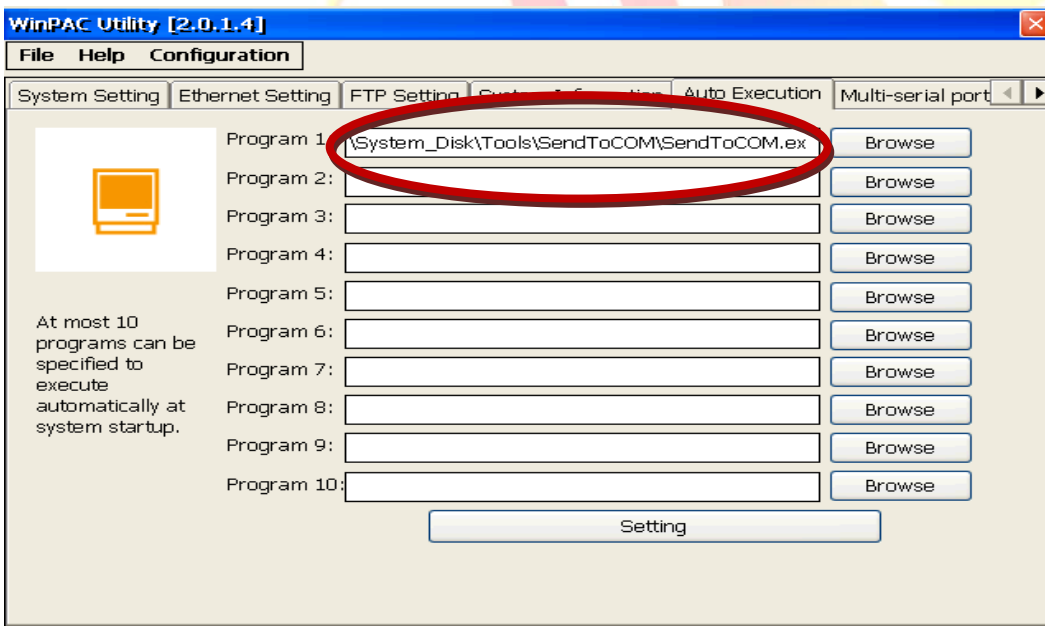
USB Mouse

USB Keyboard

Micro_SD

2. Remember all settings on WinPAC utility.

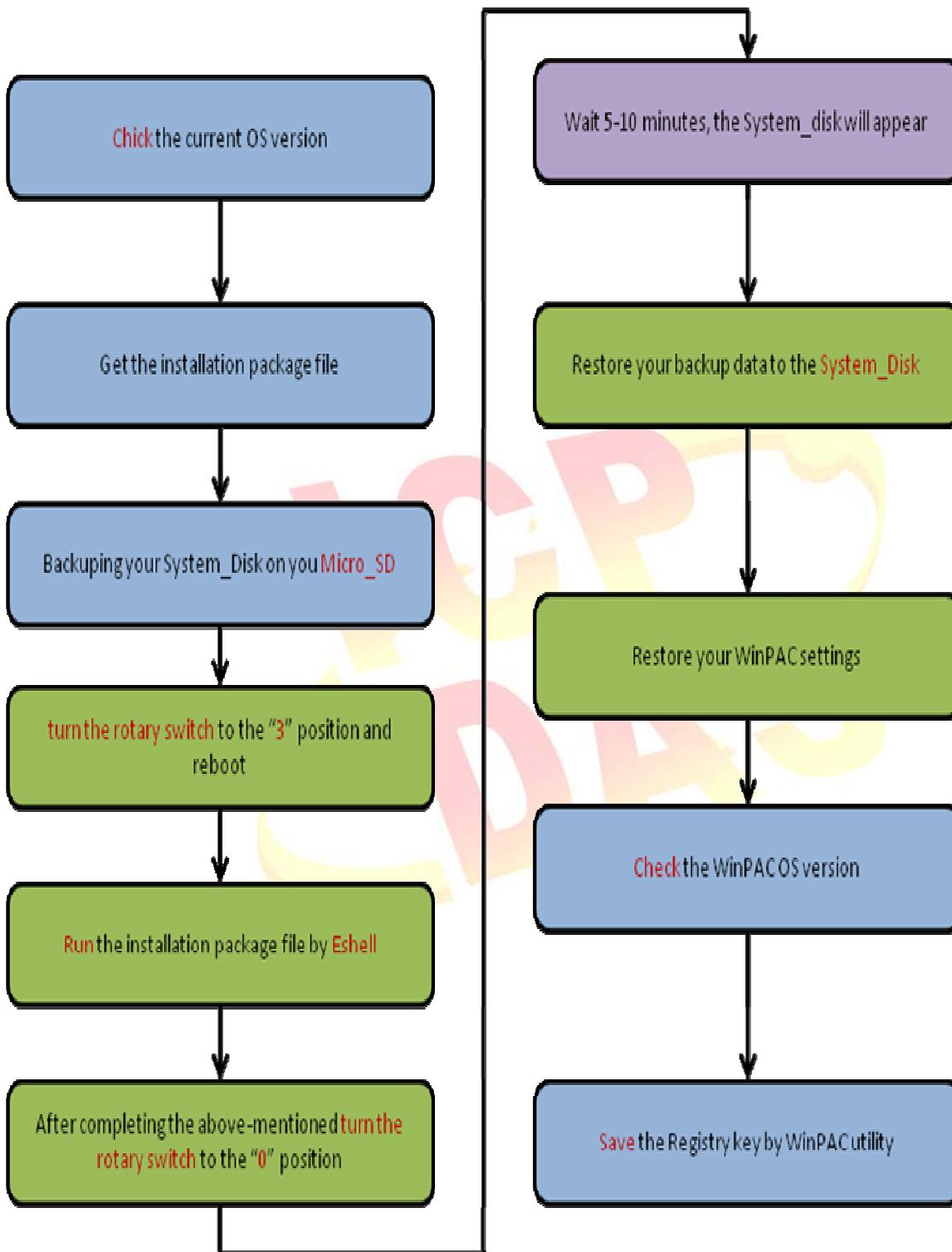
Start the WinPAC Utility on the desktop, and remember all settings (**Example below**).



3. Backup your System_Disk in Micro_SD.

Classification	System and Application FAQ on WinCE PAC				No.	4-001-02	
Author	Tunglu-Yu	Version	1.0.0	Date	2010/2/12	Page	2/13

The procedure graph of OS Updates.

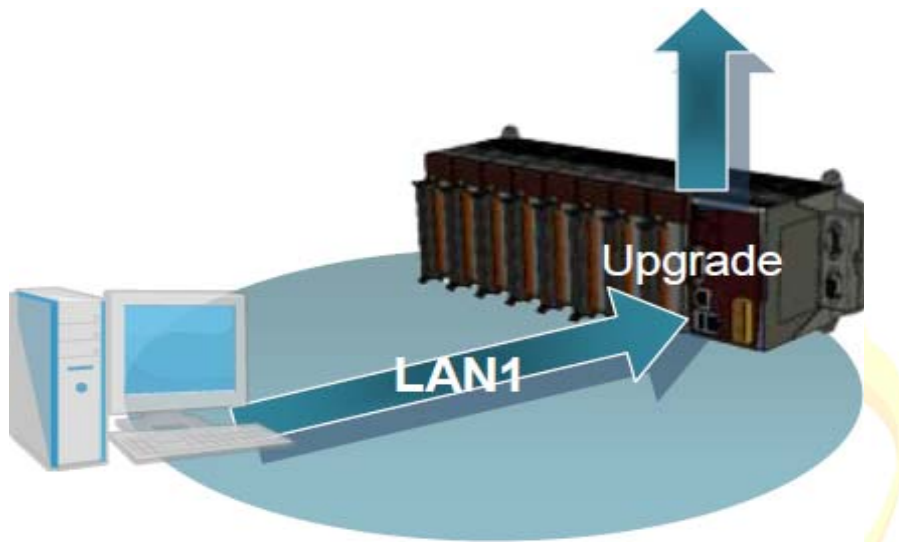


Classification	System and Application FAQ on WinCE PAC				No.	4-001-02	
Author	Tunglu-Yu	Version	1.0.0	Date	2010/2/12	Page	3/13

To update OS image by Eshell, please perform the following steps:

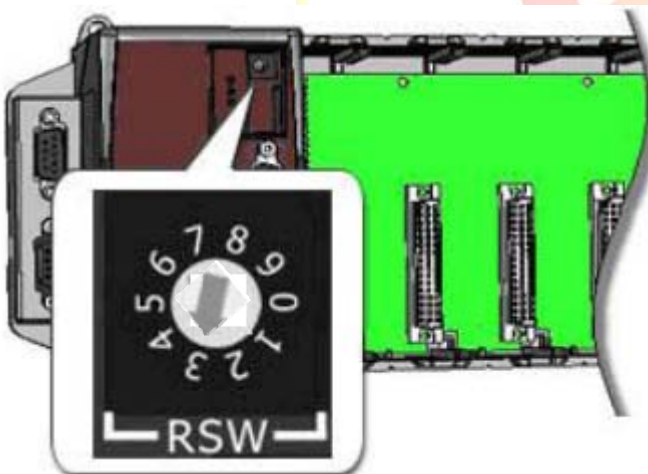
Tips & Warnings

By default, the OS updates via LAN1. Therefore, to update the OS image, make sure LAN1 is connected to the LAN Network.



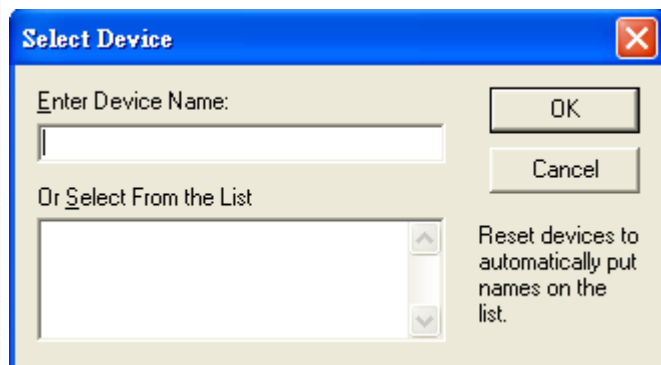
Step 1: Get the [eshell.exe](#) from `cd:\napdos\wp-8x4x_ce50\pc_tools\eshell\` and [wp8x4x_20091022_ver.1.4.2.1_en.bin](#) installation package file from `cd:\winpac\napdos\wp-8x4x_ce50\os_image\update_from_eshell\en\`.

Step 2: Turn the rotary switch to the "3" position and reboot.

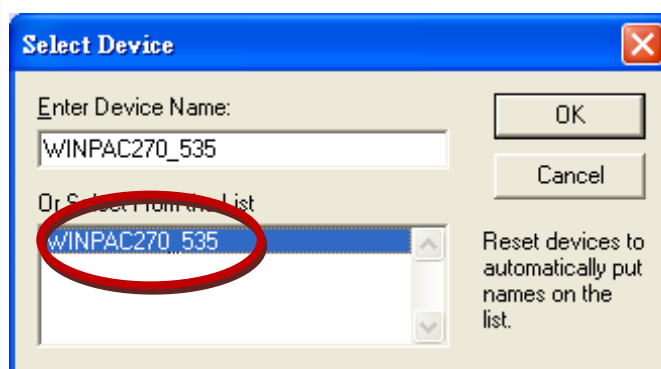


Classification	System and Application FAQ on WinCE PAC				No.	4-001-02	
Author	Tunglu-Yu	Version	1.0.0	Date	2010/2/12	Page	4/13

Step 3: Execution "Eshell".

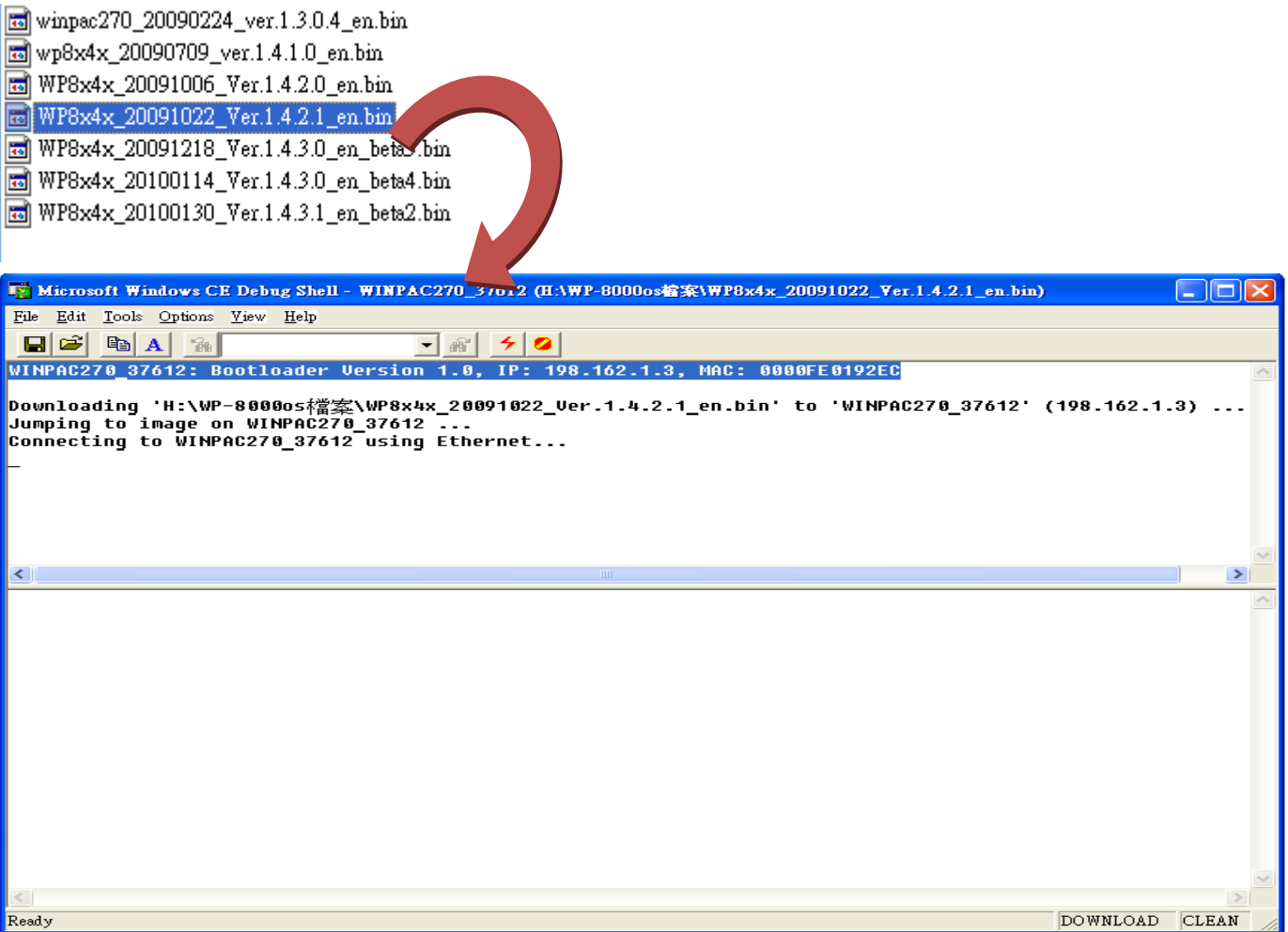


Step 4: Select the device which you want to update the OS image.

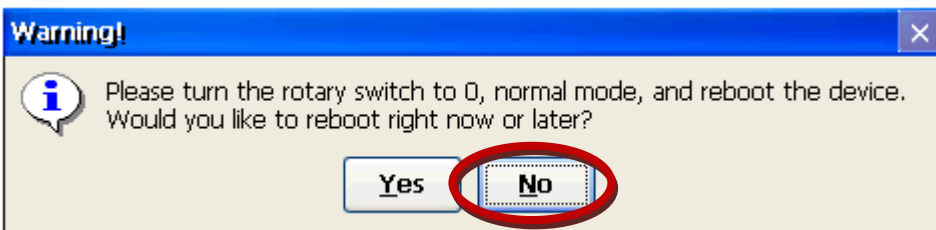


Classification	System and Application FAQ on WinCE PAC				No.	4-001-02	
Author	Tunglu-Yu	Version	1.0.0	Date	2010/2/12	Page	5/13

Step 5: Select the latest version of the OS image file.

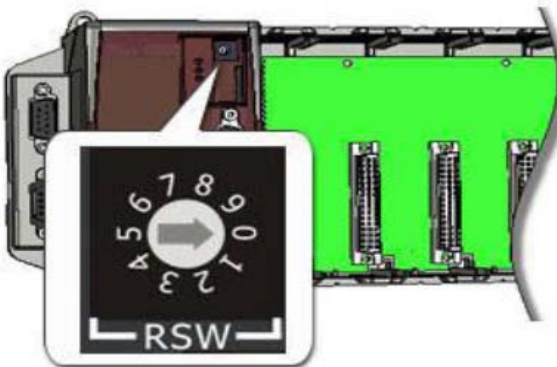


Step 6: Once the procedure is **completed**, the “Warning!” dialog box will Appear on WinPAC screen as below shown, click “No” to finish the process.



Classification	System and Application FAQ on WinCE PAC				No.	4-001-02	
Author	Tunglu-Yu	Version	1.0.0	Date	2010/2/12	Page	6/13

Step 7: Turn the rotary switch to the "0" (if you update OS version 1.4.3.1. Please go to page 8).

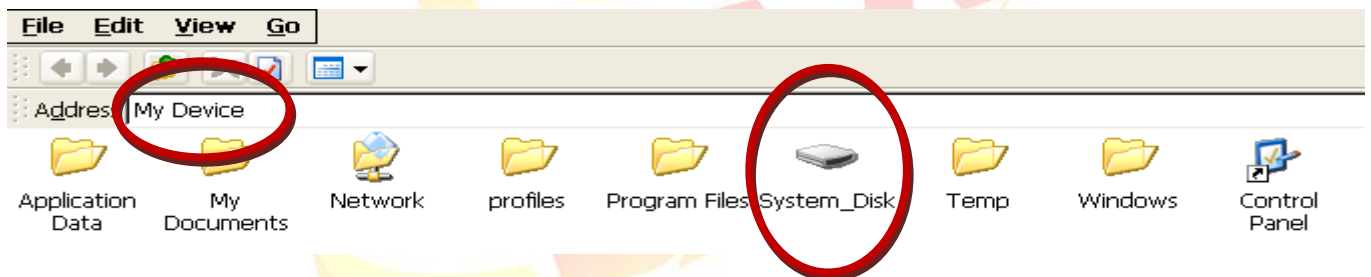


Important Warnings



If you **reboot** at step 8~11, the WinPAC/ViewPC OS will **read** the registry of old OS. Please, **Turn** the rotary switch to the "1" and reboot. **Start** the WinPAC/ViewPC Utility, and then **click** "File->Save". **Turn** the rotary switch to the "0" and reboot. After reboot, the WinPAC/ViewPC OS will read the registry of new OS.

Step 8: Wait 5-10 minutes, the System_disk folder will appear in "My Device".

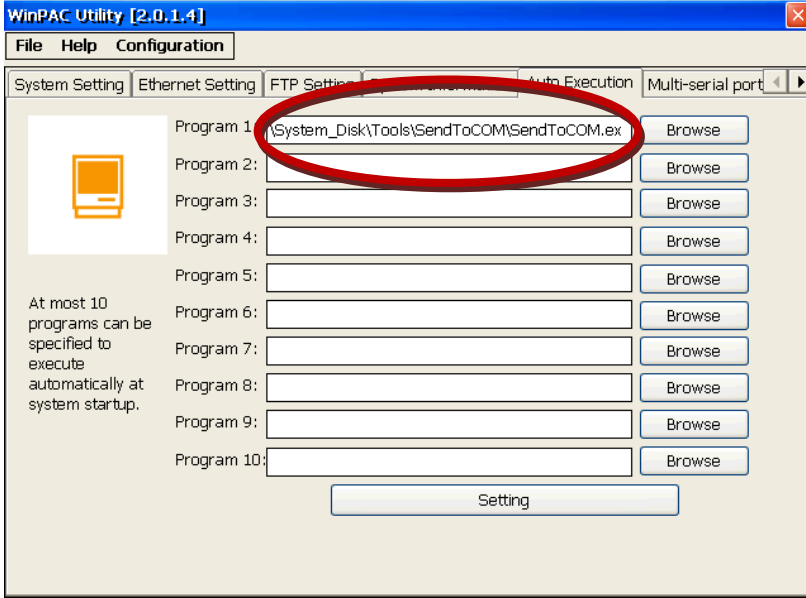


Step 9: Restore your backup data to the System_Disk.

Classification	System and Application FAQ on WinCE PAC				No.	4-001-02	
Author	Tunglu-Yu	Version	1.0.0	Date	2010/2/12	Page	7/13

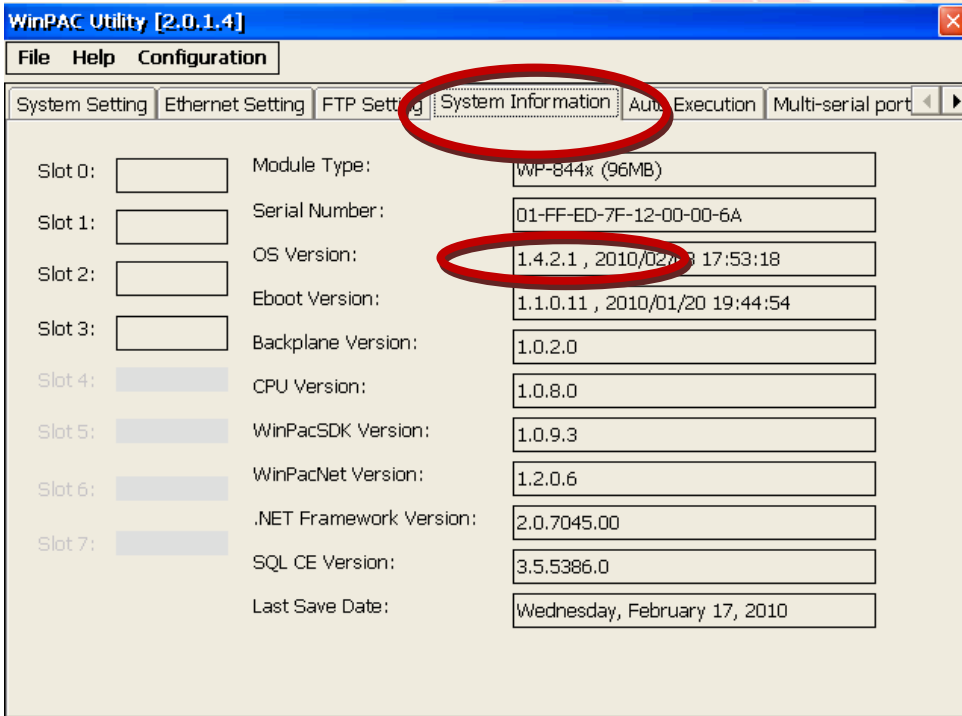
Step 10: Restore your WinPAC settings.

Start the WinPAC Utility on the desktop, and restore all settings (Example below).



Step 11: Check the WinPAC OS version

Start the WinPAC Utility on the desktop, and then select the “System Information” tab to check the current OS version.

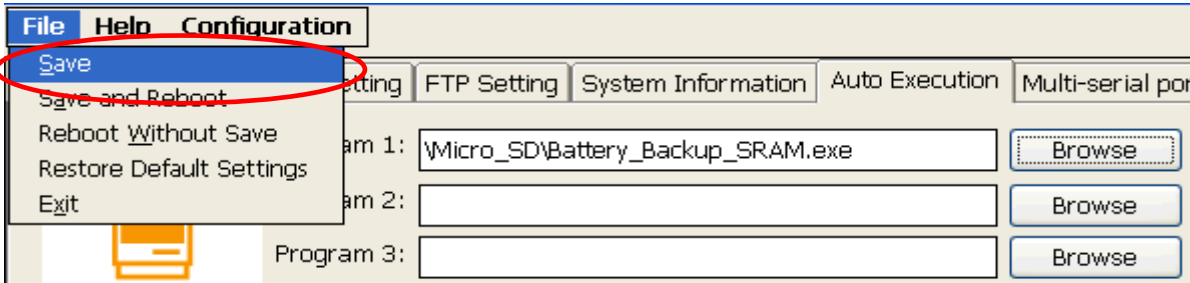


Classification	System and Application FAQ on WinCE PAC				No.	4-001-02	
Author	Tunglu-Yu	Version	1.0.0	Date	2010/2/12	Page	8/13

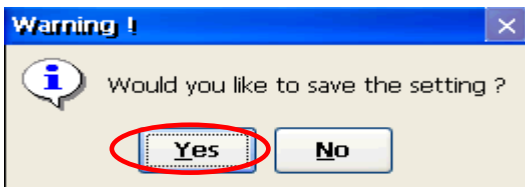
Step 12: Save your WinPAC/ViewPC settings and registry key.

12.1. Start the WinPAC/ViewPC Utility on the desktop.

Click the "File" menu option, and then click "Save" to save the setting.

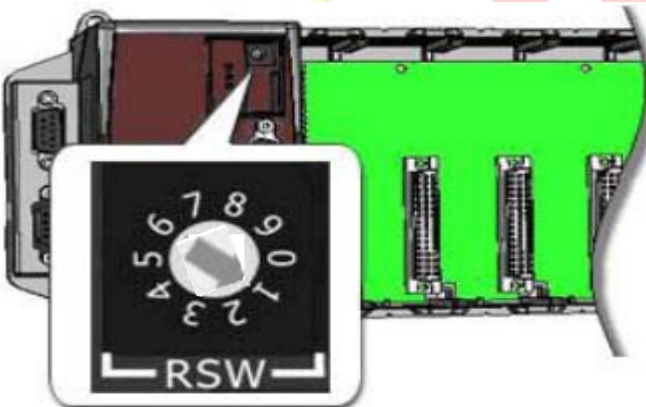


12.2. Click the "Yes" button.

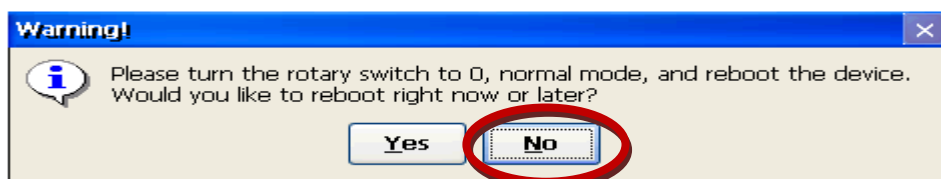


IF you update OS version 1.4.3.1 there are something different on Step 7、8 and 9.

Step 7: Turn the rotary switch to the "1" (safe mode) and reboot.

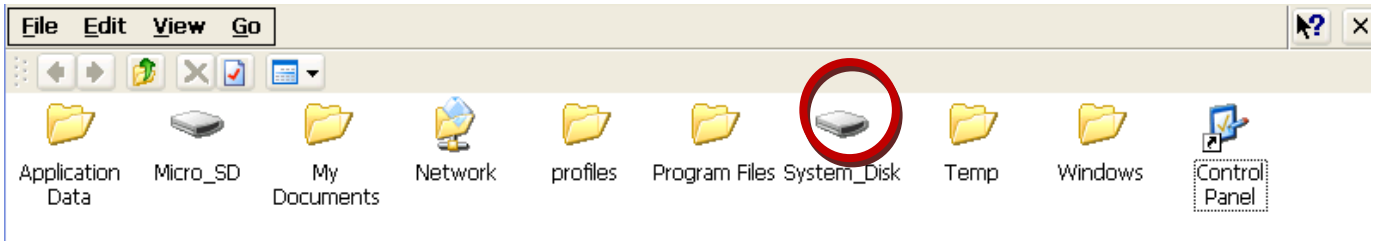


After Reboot, you will see a "Warning" dialog box and **click "No"**.



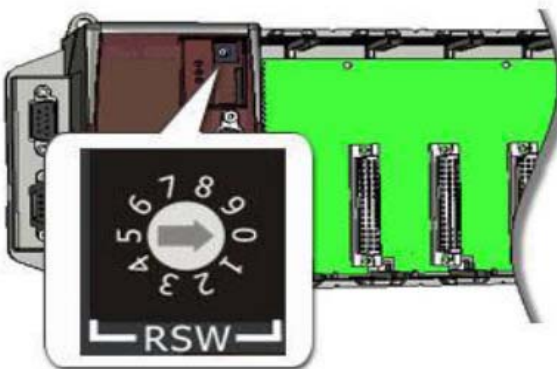
Classification	System and Application FAQ on WinCE PAC				No.	4-001-02	
Author	Tunglu-Yu	Version	1.0.0	Date	2010/2/12	Page	9/13

Step 8: Wait 5~10 minute for formatting disk. The System_disk folder will appear.

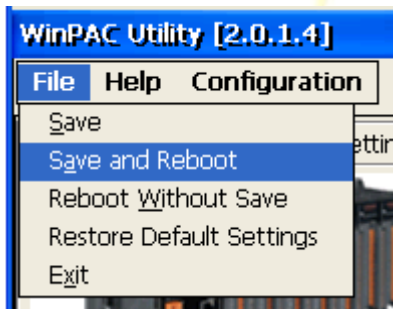


Step 9: Restore your backup data to the System_Disk.

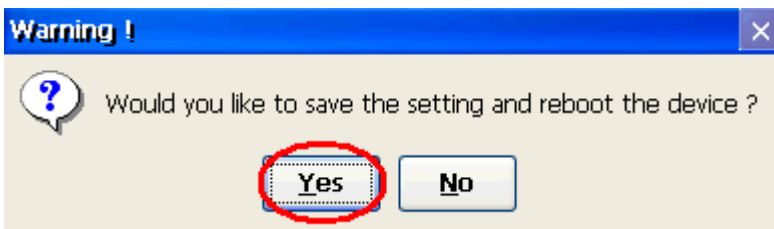
Turn the rotary switch to the "0" (normal mode).



Start the WinPAC/ViewPC Utility, and then click "File->Save and Reboot".



Click "Yes" button.



Go to **Step 10**.

Classification	System and Application FAQ on WinCE PAC				No.	4-001-02	
Author	Tunglu-Yu	Version	1.0.0	Date	2010/2/12	Page	10/13

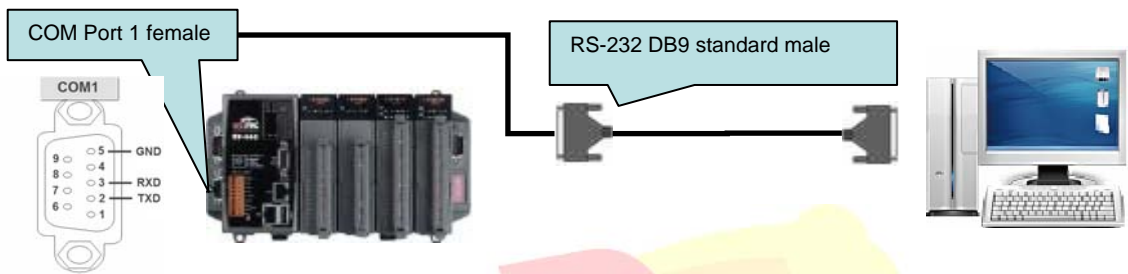
How to update OS image by Eshell (without DHCP server)

You still can update OS image by Eshell when your LAN network without DHCP service.

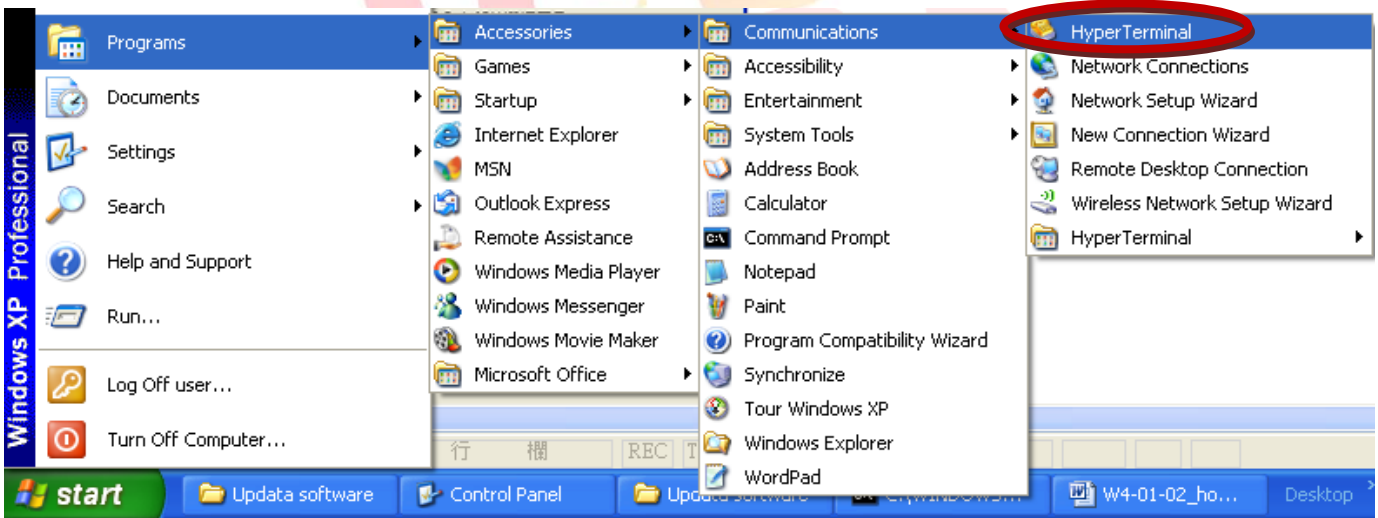
Before updates OS, Please do below acts.

Connect PC and WinPAC by RS-232 serial.

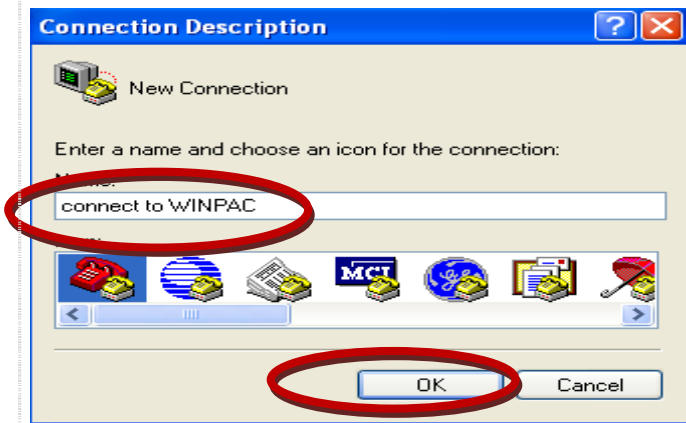
1. Connect with COM1



2. Click start->Programs->Accessories->Communications->HyperTerminal.

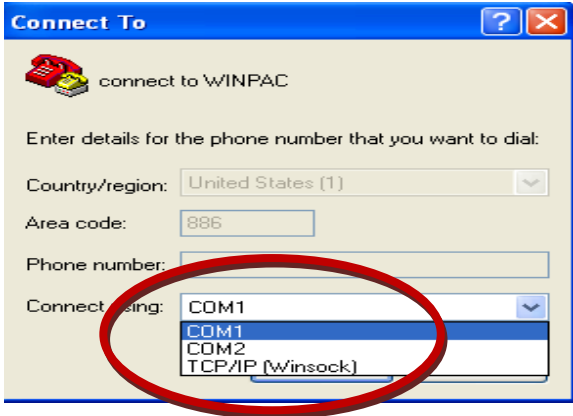


2.1. Key in the name of connection and click "OK".

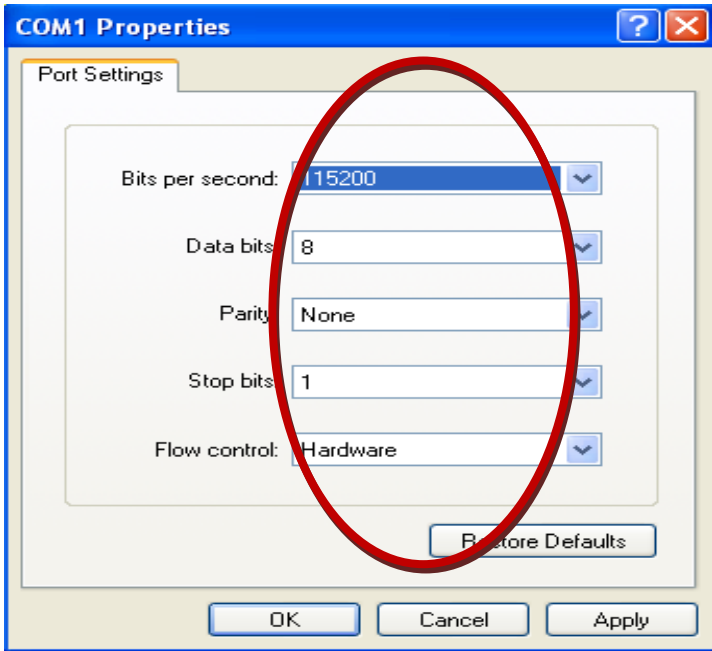


Classification	System and Application FAQ on WinCE PAC				No.	4-001-02	
Author	Tunglu-Yu	Version	1.0.0	Date	2010/2/12	Page	11/13

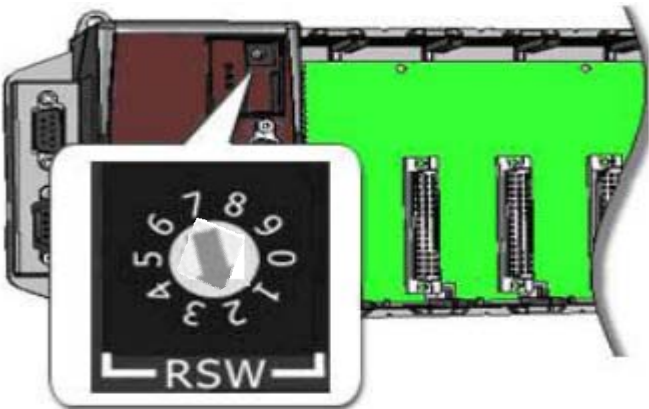
2.2. Select the COM Port connects with WinPAC.



2.3. Set connection Configure according to below and click “OK”.



3. Turn the rotary switch to the “2” position and reboot.



Classification	System and Application FAQ on WinCE PAC				No.	4-001-02	
Author	Tunglu-Yu	Version	1.0.0	Date	2010/2/12	Page	12/13

4. Press "SPACE" button on Keyboard.

The image shows two screenshots of a HyperTerminal window titled "connect to WINPAC - HyperTerminal".

The first screenshot shows the following text:

```
MfgCode=00000089          DeviceID=0000001D
Flash type 00000001
Flash type J3

dwLcdVGA 0x0
LAN1 MAC Addr: 00-00-FE-01-92-EC
LAN2 MAC Addr: 00-00-EE-11-6A-00
Press [ENTER] to download now or [SPACE] to cancel.
Initiating image download in 4 seconds.
```

The second screenshot shows the following text:

```
dwLcdVGA 0x0
LAN1 MAC Addr: 00-00-FE-01-92-EC
LAN2 MAC Addr: 00-00-EE-11-6A-00
Press [ENTER] to download now or [SPACE] to cancel.
Initiating image download in 1 seconds.
Ethernet Boot Loader Configuration:
0) IP address: 192.168.255.1
1) Subnet mask: 255.255.255.0
2) # bootme's: 25
3) Boot delay: 2 seconds
4) DHCP: Enabled
5) Reset to factory default configuration
6) Download new image at startup
7) Program RAM image into FLASH (Enabled)
8) Program LAN1 MAC address: 00-00-FE-01-92-EC
9) Program LAN2 MAC address: 00-00-EE-11-6A-00
V) Current display type is 0:Depend on Registry (0~6)
D) Download image now
```

Red circles highlight the "[SPACE]" key in the first screenshot and the "[ENTER]" key in the second screenshot. A large red arrow points from the first screenshot to the second.

5. Pass "4" and pass "0" input static IP address (According to static IP of PC).

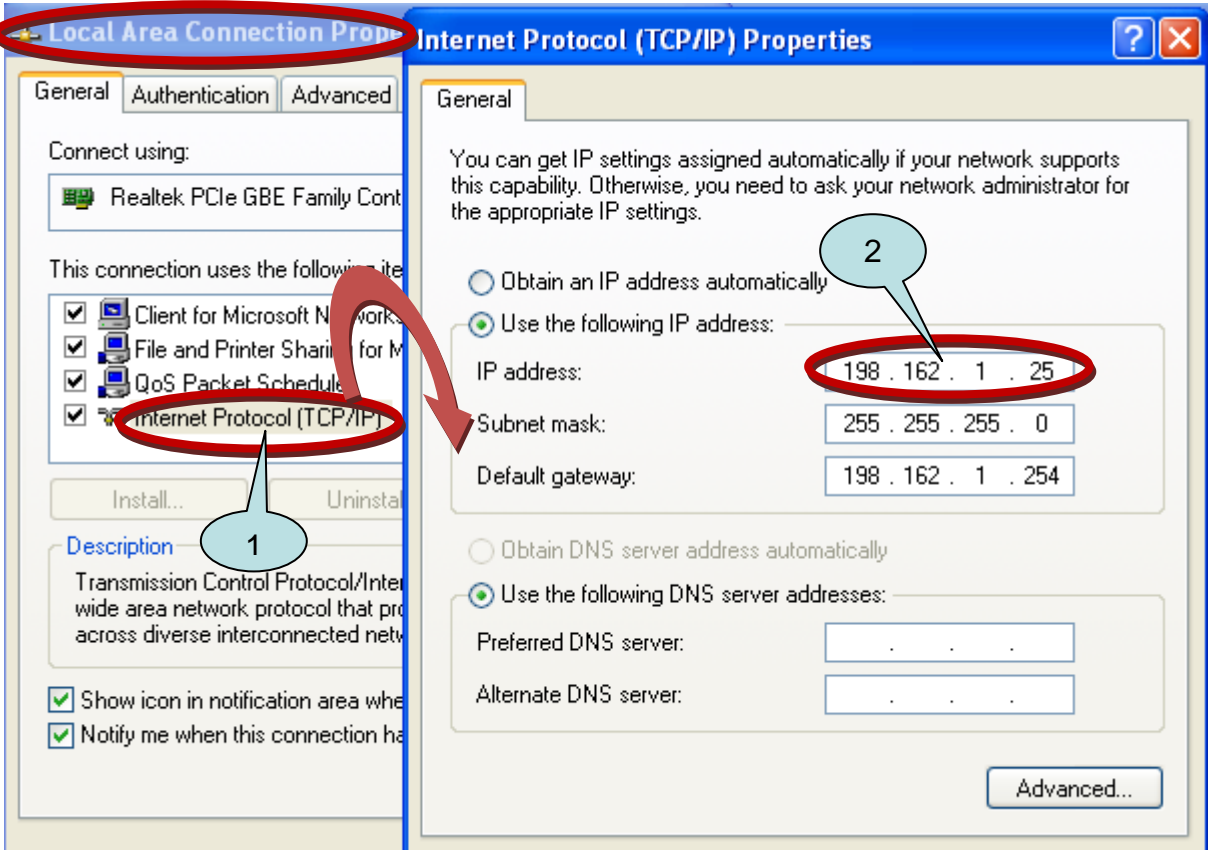
Tips & Warnings



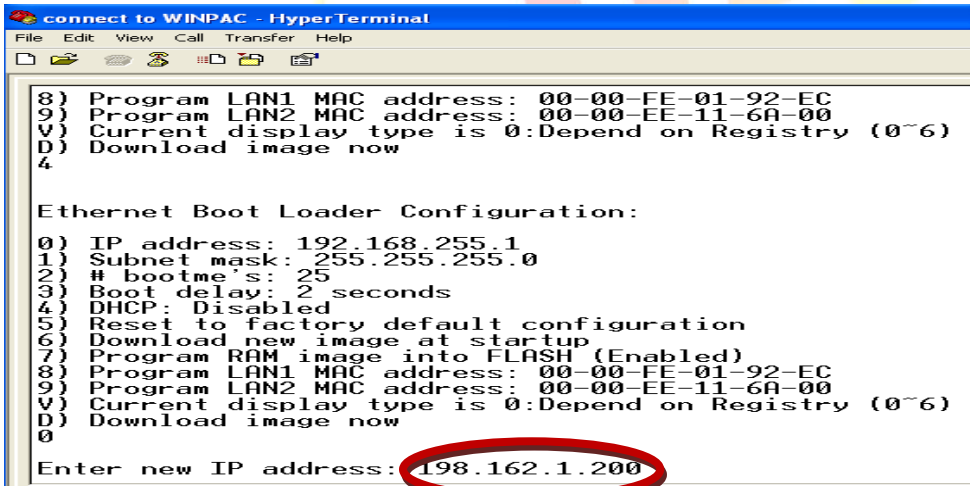
PC has to set Static IP too.

Classification	System and Application FAQ on WinCE PAC				No.	4-001-02	
Author	Tunglu-Yu	Version	1.0.0	Date	2010/2/12	Page	13/13

5.1. Set the IP address for WinPAC according to the IP of Local Area Connection on PC (Example: 198.162.1.25).



5.2 You can use the IP 198.162.1.0 to 254(except 25).



6. Pass "d" to save all settings and Reboot.

7. Go to page 1.