

Classification	System and Application FAQ on WinCE PAC				No.	4-001-01	
Author	Tunglu-Yu	Version	1.0.0	Date	2010/2/12	Page	1/12

How to update OS image by Exe file

Applies to:

Platform	OS version	WinPAC/ViewPAC utility version
WP-8x3x	All versions	All versions
WP-8x4x	All versions	All versions
VP-25W1	All versions	All versions
VP-23W1	All versions	All versions

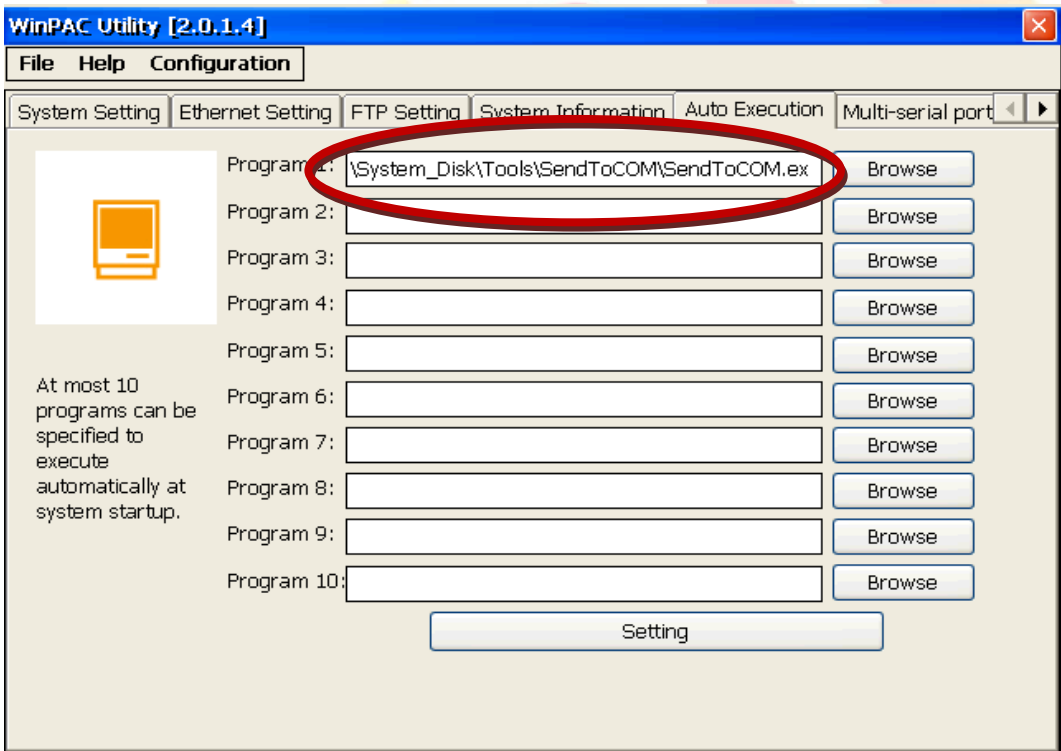
Before updates OS, Please do below acts.

1. Preparation of below devices.

- Monitor/VGA line**
- USB Hub**
- USB Mouse**
- USB Keyboard**
- Micro_SD**

2. Remember all settings on WinPAC utility.

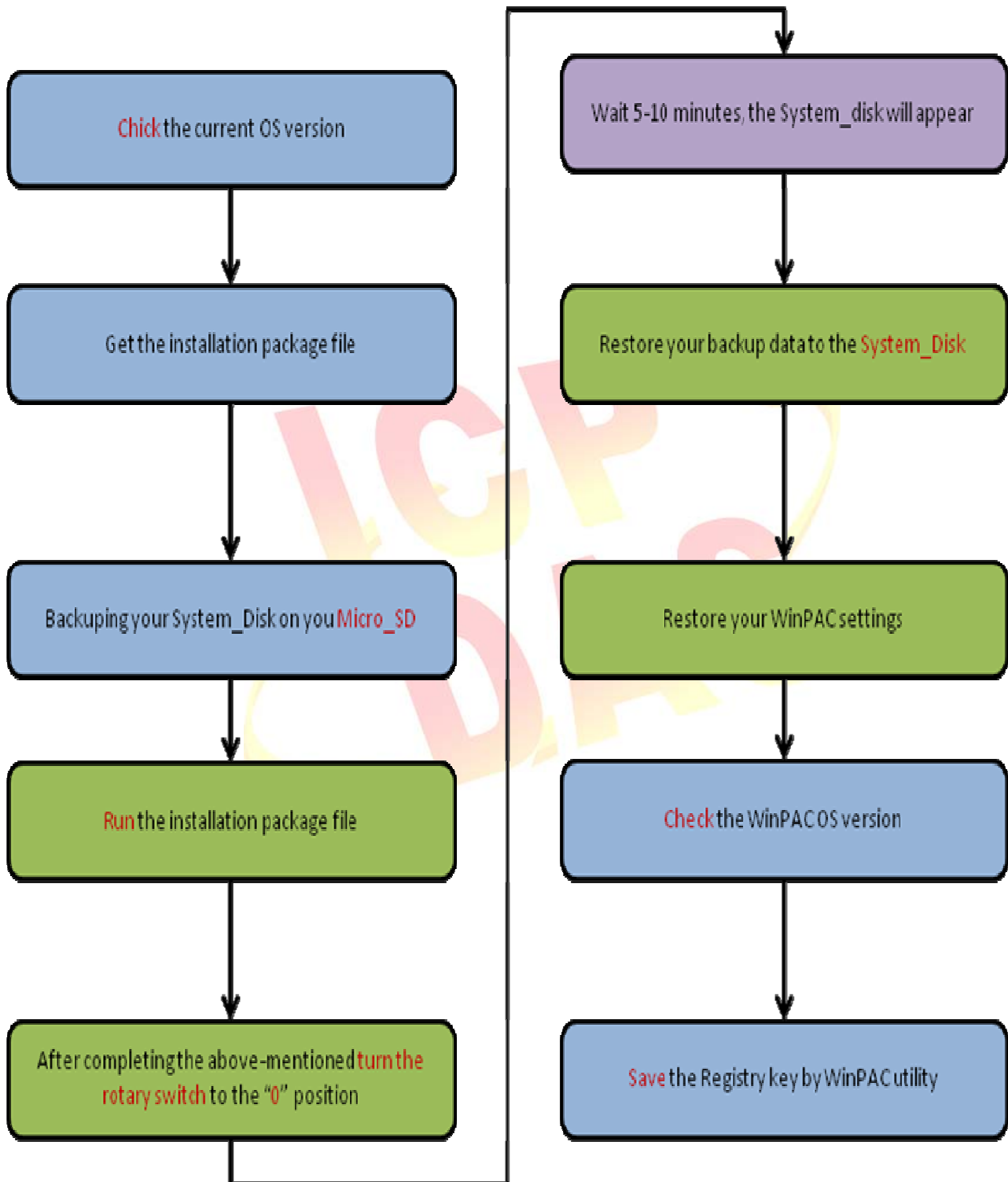
Start the WinPAC Utility on the desktop, and remember all settings (**Example below**).



3. Backup your System_Disk in Micro_SD.

Classification	System and Application FAQ on WinCE PAC				No.	4-001-01	
Author	Tunglu-Yu	Version	1.0.0	Date	2010/2/12	Page	2/12

The procedure graph of OS Updates.



Classification	System and Application FAQ on WinCE PAC				No.	4-001-01	
Author	Tunglu-Yu	Version	1.0.0	Date	2010/2/12	Page	3/12

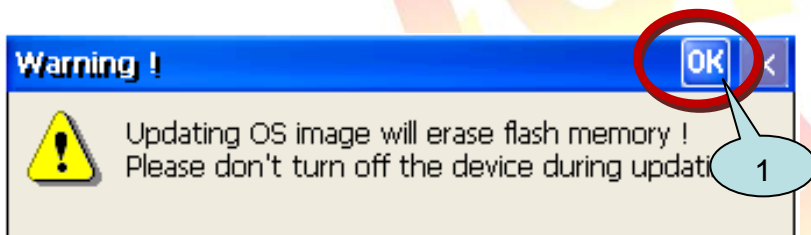
To update OS image by Exe file, perform the following steps:

Step 1: Get the [wp8x4x_20091022_ver.1.4.2.1_en.exe](http://ftp.icpdas.com/pub/cd/winpac/napdos/wp-8x4x_ce50/os_image/update_from_file/en/) installation package file (or any version) from http://ftp.icpdas.com/pub/cd/winpac/napdos/wp-8x4x_ce50/os_image/update_from_file/en/

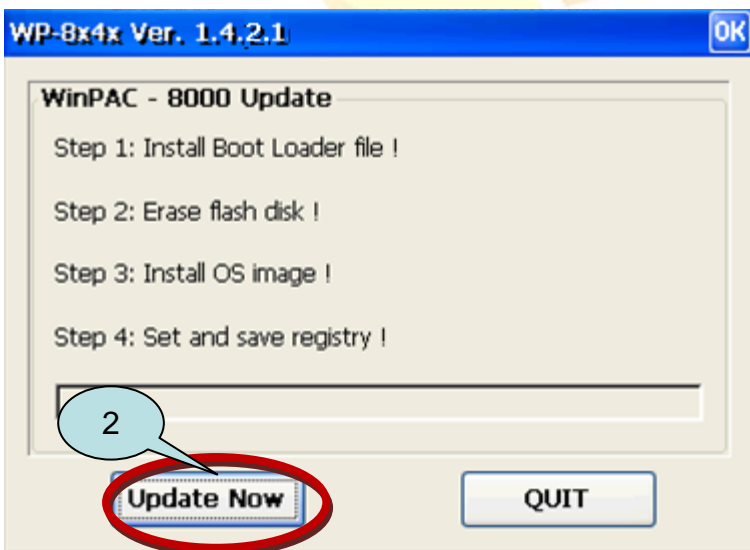
Copy this file to System_Disk or MicroSD of the WinPAC.



Step 2: Run the installation package file.

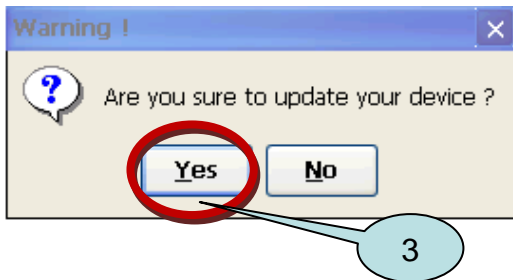


Step 3:



Classification	System and Application FAQ on WinCE PAC				No.	4-001-01	
Author	Tunglu-Yu	Version	1.0.0	Date	2010/2/12	Page	4/12

Step 4:



This installation procedure will perform the following tasks:

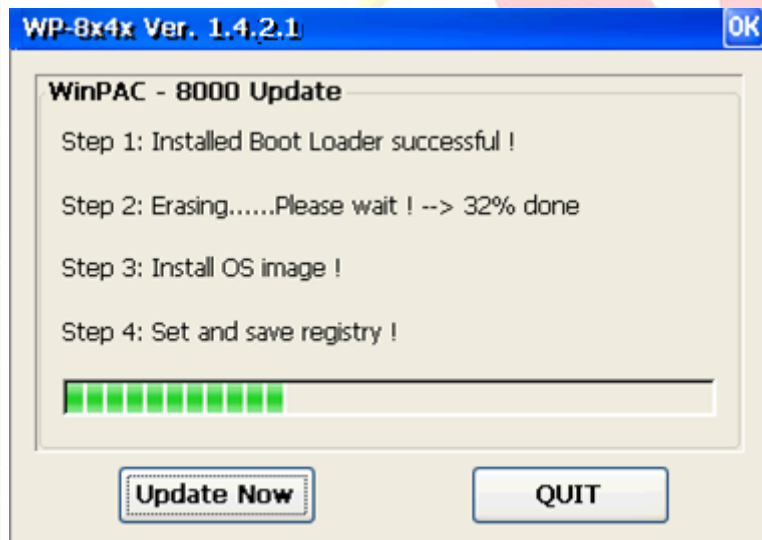
i. Install boot loader file

Important Warnings



Be careful, if the boot loader broken off in this step and cannot restart in safe mode, you have to send it back to us.

- ii. Erase flash disk
- iii. Install OS image
- iv. Set and save registry



Classification	System and Application FAQ on WinCE PAC				No.	4-001-01	
Author	Tunglu-Yu	Version	1.0.0	Date	2010/2/12	Page	5/12

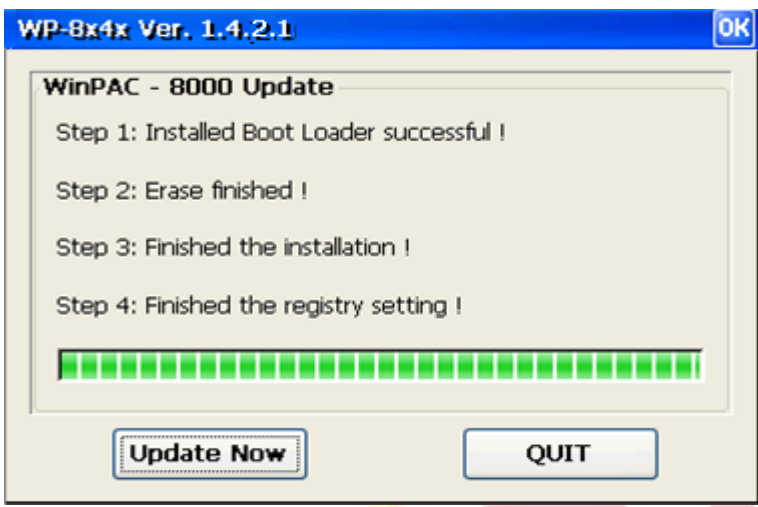
Tips & Warnings

 This procedure will reset the registry settings to their default settings, and all of your settings will be lost.

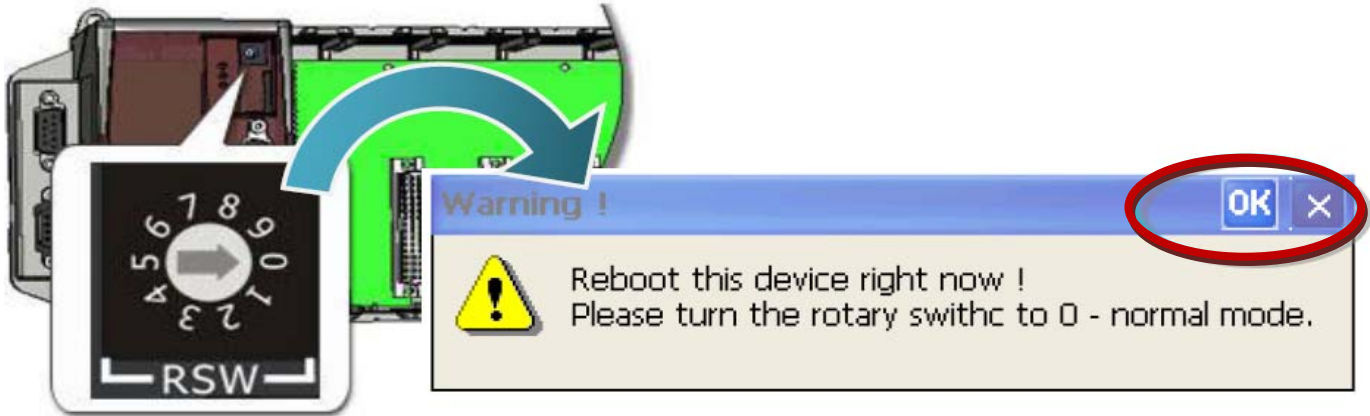


During this time, do not turn off the WinPAC. If the update is cancelled before completion, the WinPAC may become damaged and may require servicing or exchange.

Besides, we recommend that you turn off all other applications before starting to upgrade the OS.

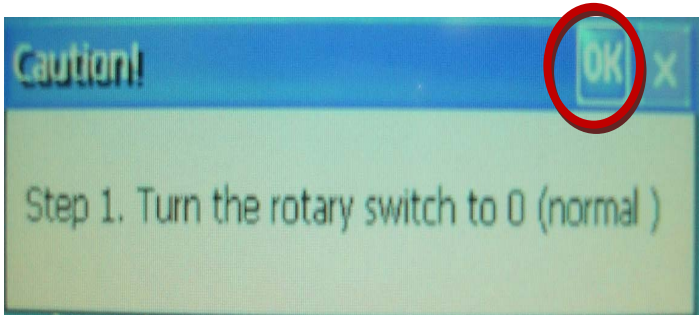


Step 5: After completing the above-mentioned tasks, the “Warning !” dialog box will appear as follow, before clicking the “OK” button, you must first turn the rotary switch to the “0” position.

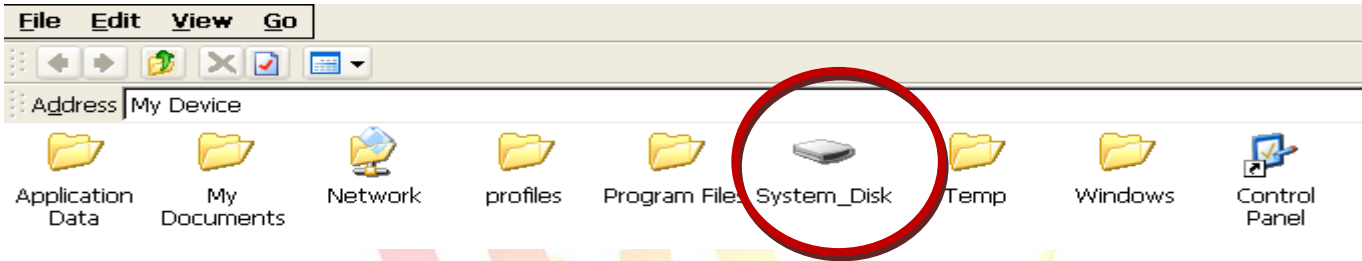


Classification	System and Application FAQ on WinCE PAC				No.	4-001-01	
Author	Tunglu-Yu	Version	1.0.0	Date	2010/2/12	Page	6/12

After reboot, the monitor will become **WHITE** for a while and you will see a "Caution" dialog box, clicking the "OK" button.



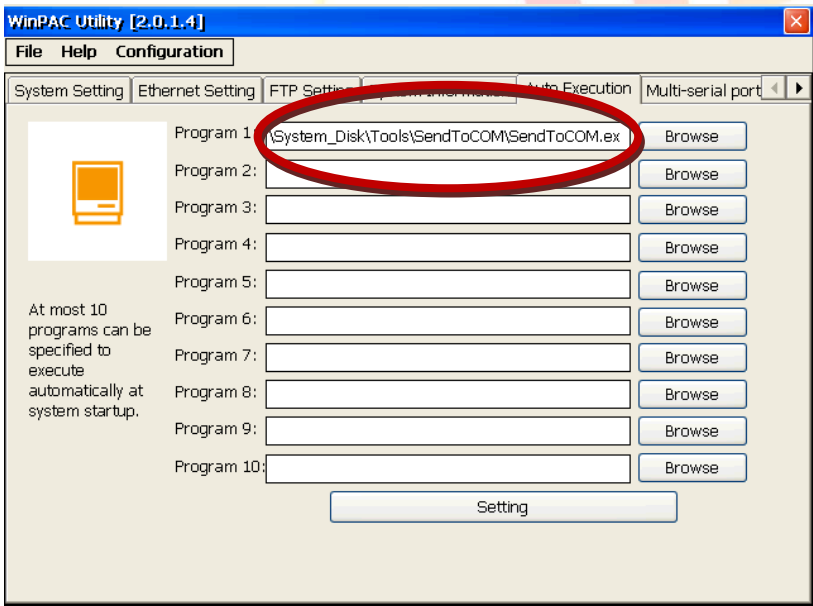
Step 6: Wait 5-10 minutes, the System_disk folder will appear in "My Device".



Step 7: Restore your backup data to the System_Disk.

Step 8: Restore your WinPAC settings.

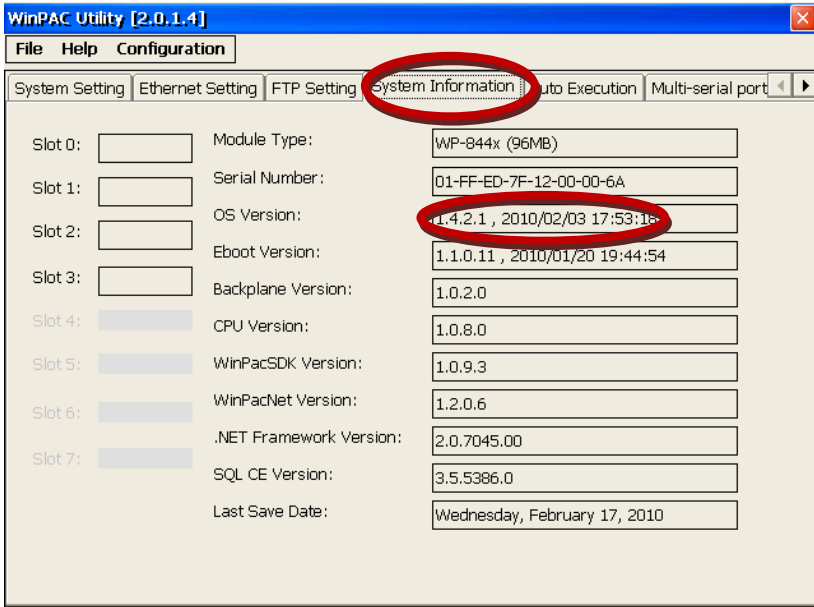
Start the WinPAC Utility on the desktop, and restore all settings (Example below).



Classification	System and Application FAQ on WinCE PAC				No.	4-001-01	
Author	Tunglu-Yu	Version	1.0.0	Date	2010/2/12	Page	7/12

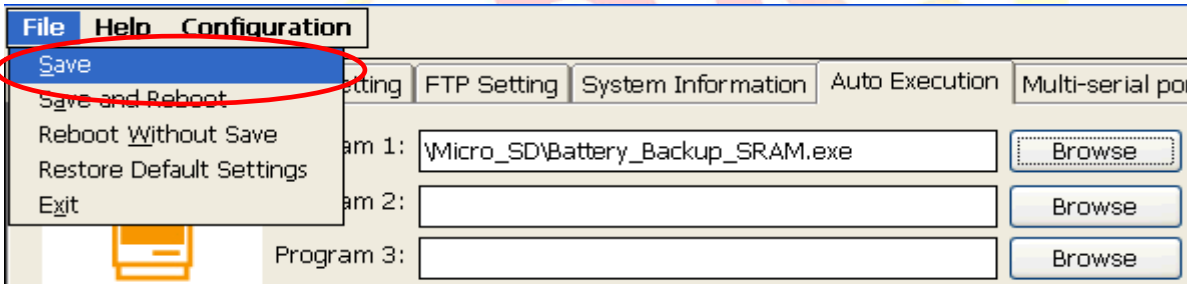
Step 9: Check the WinPAC OS version

Start the WinPAC Utility on the desktop, and then select the “System Information” tab to check the current OS version.

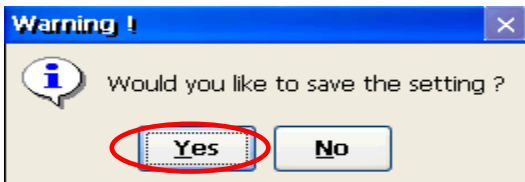


Step 10: Save your WinPAC/ViewPC settings and registry key.

10.1. Start the WinPAC/ViewPC Utility on the desktop, and then click the menu “File->Save” menu option.



10.2. Click the “Yes” button.

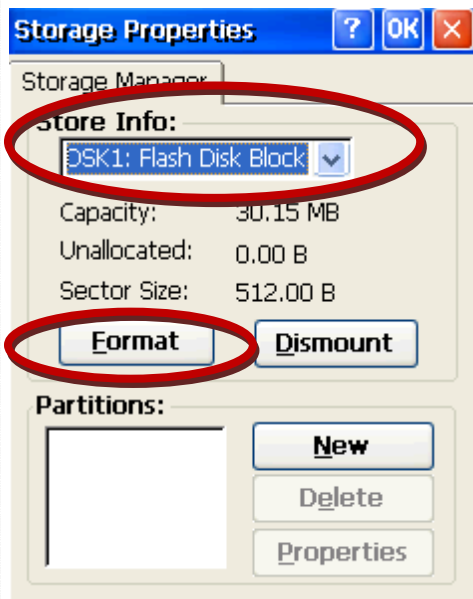


Classification	System and Application FAQ on WinCE PAC				No.	4-001-01	
Author	Tunglu-Yu	Version	1.0.0	Date	2010/2/12	Page	8/12

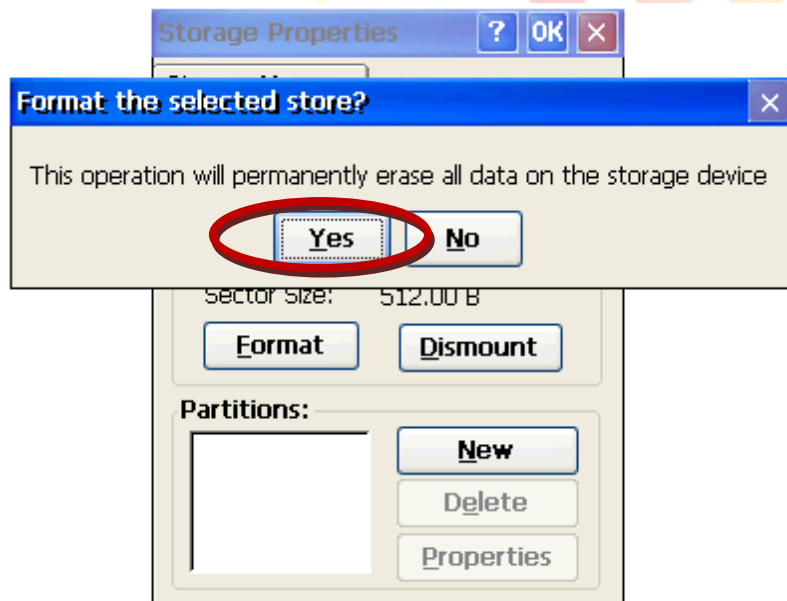
IF you update OS version 1.4.3.1 there are something different on Step 6.

Step 6: Go to Control Panel to double click **Storage Manager**, and Select "**DSK1: Flash Disk Block**" then click "**Format**" button.

If you can't see the "**DSK1: Flash Disk Block**", go to the page 10

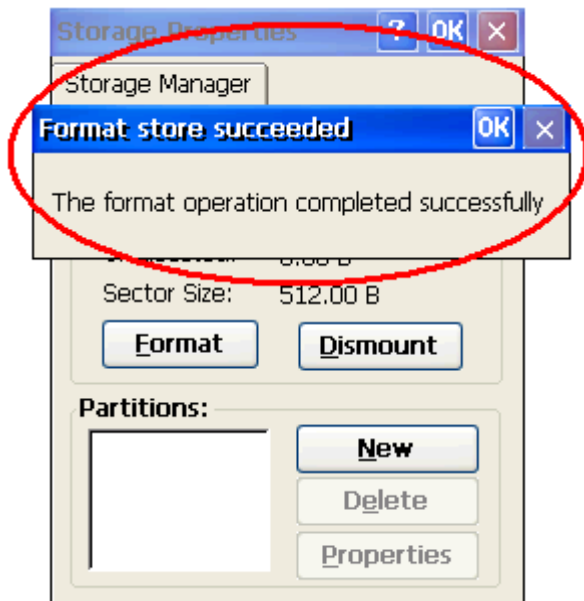


Click **Yes** button and then wait 5~10 minute for formatting disk.

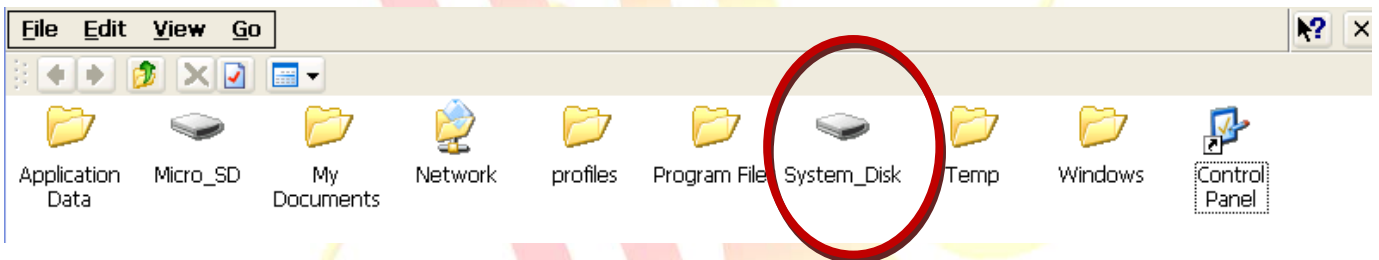


Classification	System and Application FAQ on WinCE PAC				No.	4-001-01	
Author	Tunglu-Yu	Version	1.0.0	Date	2010/2/12	Page	9/12

Click **OK** button and then reboot.



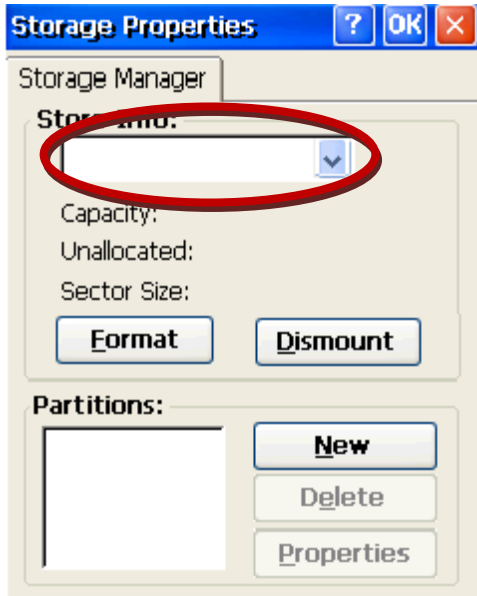
After Reboot, the System_disk folder will appear.



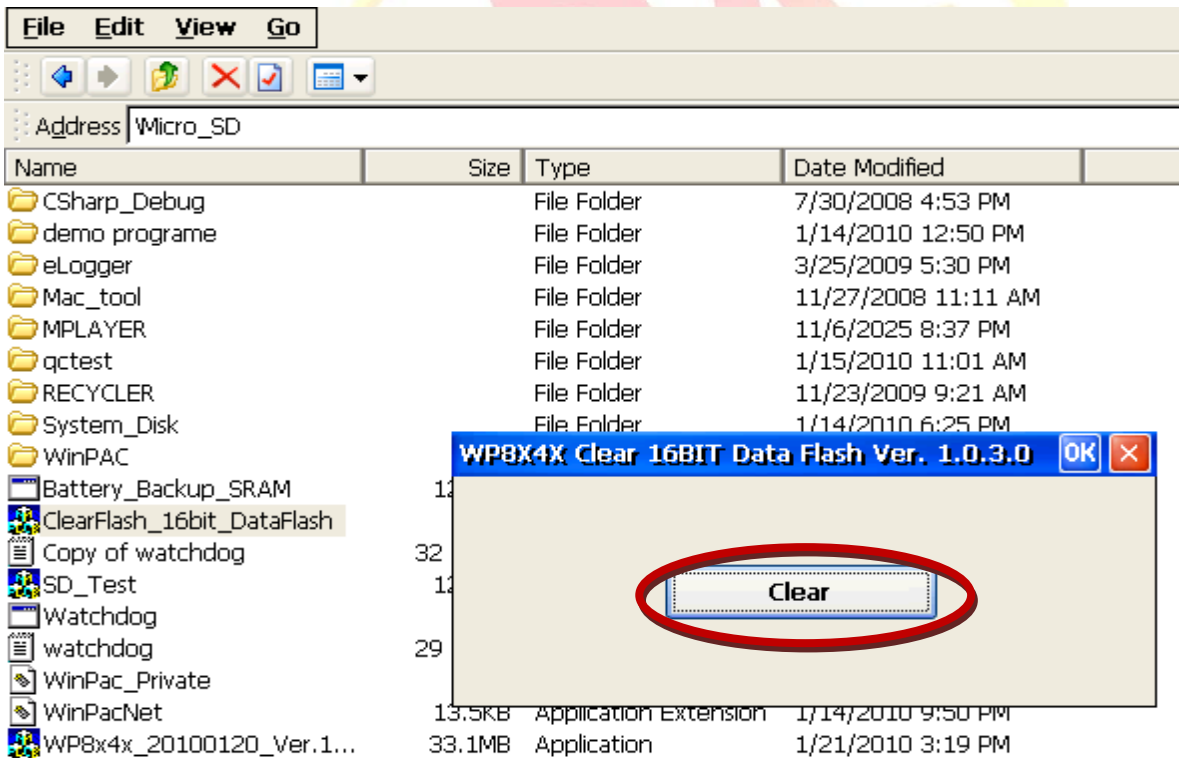
Go to **Step 7**.

Classification	System and Application FAQ on WinCE PAC				No.	4-001-01	
Author	Tunglu-Yu	Version	1.0.0	Date	2010/2/12	Page	10/12

***If you can't see the DSK1: Flash Disk Block on step 6, please follow the steps as following.**



Step1: Double click **ClearFlash_16bit_DataFlash.exe** and click "Clear" button.



Classification	System and Application FAQ on WinCE PAC				No.	4-001-01	
Author	Tunglu-Yu	Version	1.0.0	Date	2010/2/12	Page	11/12

Step2: Wait a few minute to erase the Flash disk. **Reboot** the WinPAC after erasing.

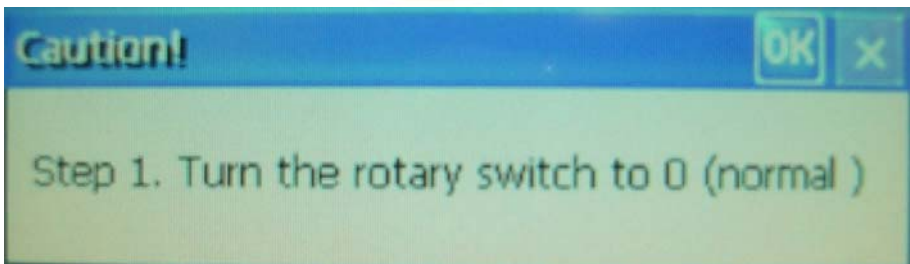
```

File Edit Help
Bytes Per Block ..... 0x20000
Number of Blocks ..... 0xf8
Flash Type ..... 0x1
Data Bytes Per Sector .. 0x200
Sectors Per Block ..... 0x100

@w<1> <2> <3> <4> <5> <6> <7> <8>
@w<9> <a> <b> <c> <d> <e> <f> <10>
@w<11> <12> <13> <14> <15> <16> <17> <18>
@w<19> <1a> <1b> <1c> <1d> <1e> <1f> <20>
@w<21> <22> <23> <24> <25> <26> <27> <28>
@w<29> <2a> <2b> <2c> <2d> <2e> <2f> <30>
@w<31> <32> <33> <34> <35> <36> <37> <38>
@w<39> <3a> <3b> <3c> <3d> <3e> <3f> <40>
@w<41> <42> <43> <44> <45> <46> <47> <48>
@w<49> <4a> <4b> <4c> <4d> <4e> <4f> <50>
@w<51> <52> <53> <54> <55> <56> <57> <58>
@w<59> <5a> <5b> <5c> <5d> <5e> <5f> <60>
@w<61> <62> <63> <64> <65> <66> <67> <68>
@w<69> <6a> <6b> <6c> <6d> <6e> <6f> <70>
@w<71> <72> <73> <74> <75> <76> <77> <78>
@w<79> <7a> <7b> <7c> <7d> <7e> <7f> <80>
@w<81> <82> <83> <84> <85> <86> <87> <88>
@w<89> <8a> <8b> <8c> <8d> <8e> <8f> <90>
@w<91> <92> <93> <94> <95> <96> <97> <98>
@w<99> <9a> <9b> <9c> <9d> <9e> <9f> <a0>
@w<a1> <a2> <a3> <a4> <a5> <a6> <a7> <a8>
@w<a9> <aa> <ab> <ac> <ad> <ae> <af> <b0>
@w<b1> <b2> <b3> <b4> <b5> <b6> <b7> <b8>
@w<b9> <ba> <bb> <bc> <bd> <be> <bf> <c0>
@w<c1> <c2> <c3> <c4> <c5> <c6> <c7> <c8>
@w<c9> <ca> <cb> <cc> <cd> <ce> <cf> <d0>
@w<d1> <d2> <d3> <d4> <d5> <d6> <d7> <d8>
@w<d9> <da> <db> <dc> <dd> <de> <df> <e0>
@w<e1> <e2> <e3> <e4> <e5> <e6> <e7> <e8>
@w<e9> <ea> <eb> <ec> <ed> <ee> <ef> <f0>
@w<f1> <f2> <f3> <f4> <f5> <f6> <f7> <f8>
Erase finished

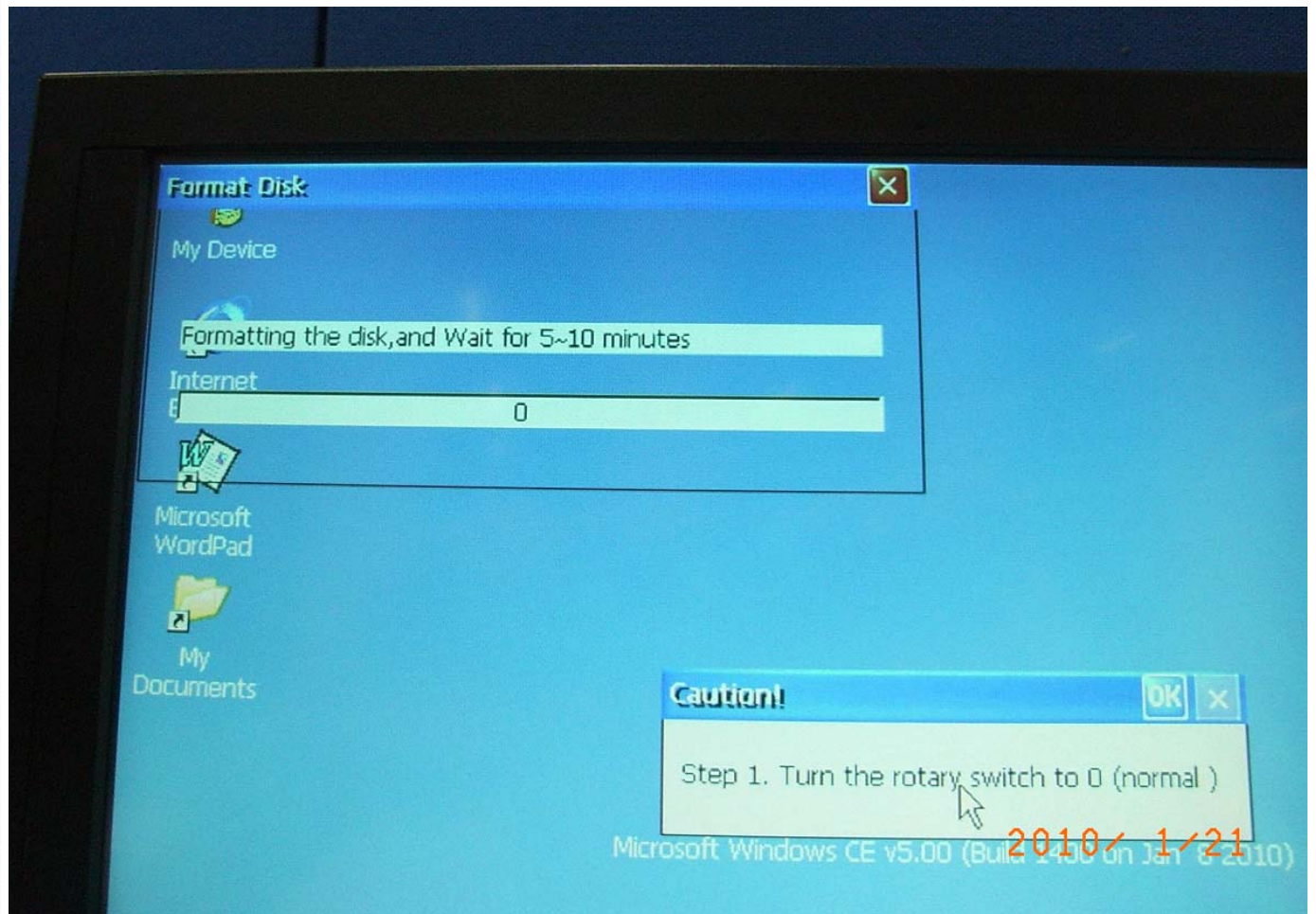
```

Step 3: After reboot, the monitor will become **WHITE** for a while and you will see a "Caution" dialog box , clicking the "OK" button.



Classification	System and Application FAQ on WinCE PAC				No.	4-001-01	
Author	Tunglu-Yu	Version	1.0.0	Date	2010/2/12	Page	12/12

Step 4: Reboot your WinPac **again**. The System_Disk will be formatted for 5~10 minute.



After the format procedure has completed, the System_disk will appear.

Go to **Step 7**.