

Classification	System and Application FAQ on WinCE PAC				No.	2-013-00	
Author	Tunglu-Yu	Version	1.0.0	Date	2010/2/12	Page	1/3

How to set the taskbar always on top?

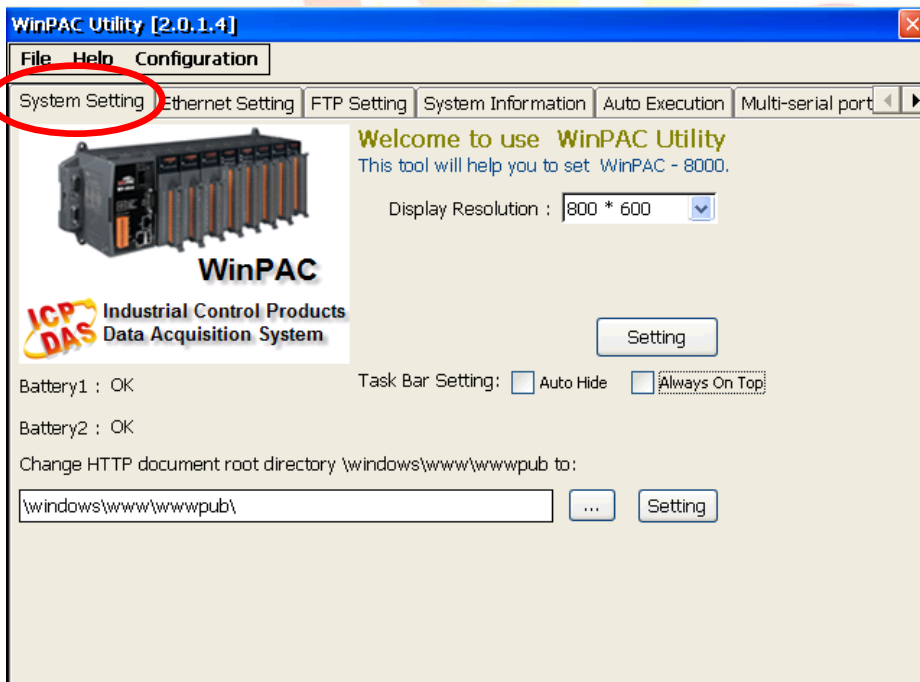
Applies to:

Platform	OS version	WinPAC/ViewPAC utility version
WP-8x3x	All versions	All versions
WP-8x4x	All versions	All versions
VP-25W1	All versions	All versions
VP-23W1	All versions	All versions

Depending on your preferences, you may want to set the taskbar to be always on top; it means that the taskbar is not shielded by other windows. To set the taskbar to be always on top, perform the following steps:

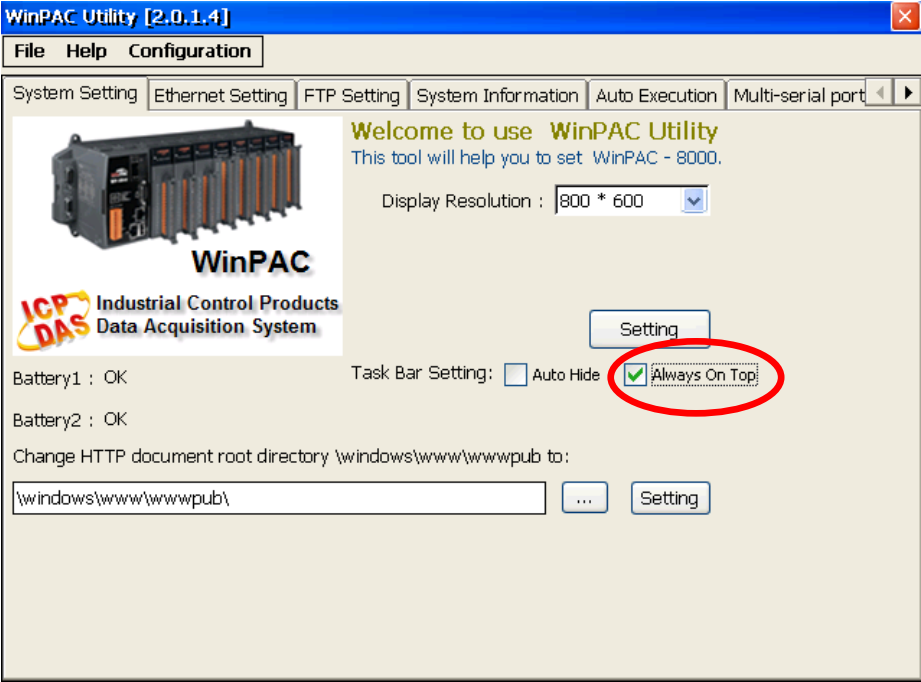
Step 1: Set the taskbar on top.

1.1. Start the WinPAC/ViewPAC Utility on the desktop, and then click the “System Setting” tag.



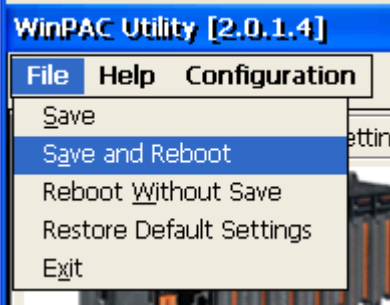
Classification	System and Application FAQ on WinCE PAC				No.	2-013-00	
Author	Tunglu-Yu	Version	1.0.0	Date	2010/2/12	Page	2/3

1.2. Check the “Always On Top” option.

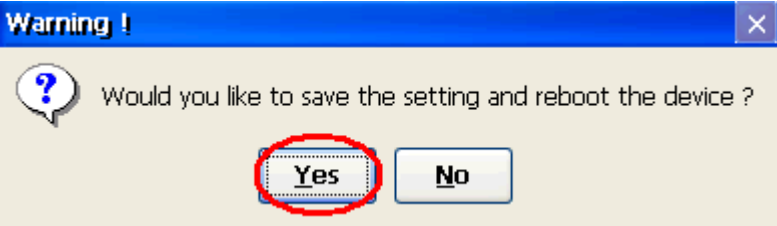


Step 2: Save the setting.

2.1. Click the “File” → “Save and Reboot” menu option.



2.2. Click the “Yes” button and wait for the device to reboot.



Classification	System and Application FAQ on WinCE PAC				No.	2-013-00	
Author	Tunglu-Yu	Version	1.0.0	Date	2010/2/12	Page	3/3

After rebooting, the taskbar will not be covered by any other windows.

