

Classification	System and Application FAQ on WinCE PAC				No.	2-010-00	
Author	Tunglu-Yu	Version	1.0.0	Date	2010/2/12	Page	1/2

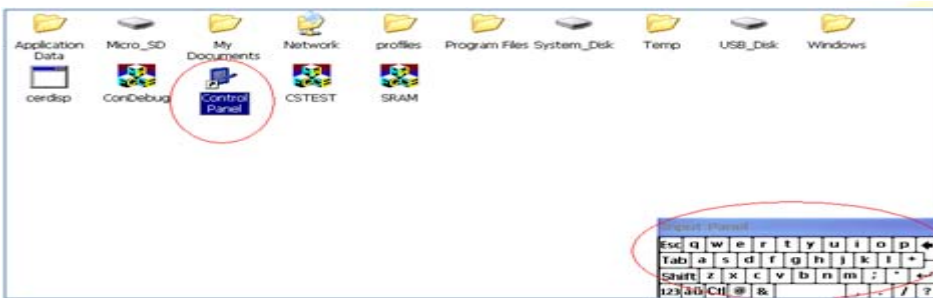
How to change the input Panel size

Applies to:

Platform	OS version	WinPAC/ViewPAC utility version
WP-8x3x	All versions	All versions
WP-8x4x	All versions	All versions
VP-25W1	All versions	All versions
VP-23W1	All versions	All versions

To change the Input Panel size, perform the following steps:

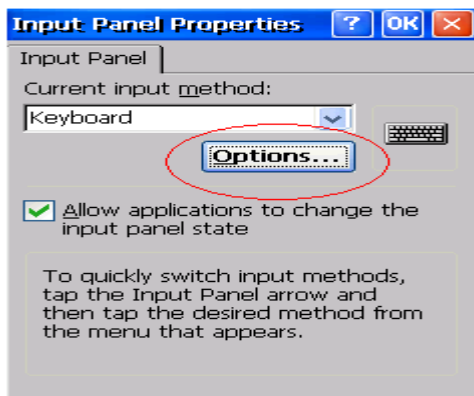
Step 1: Choose the Control Panel. Now the Panel size is large.



Step 2: Choose the Input Panel.

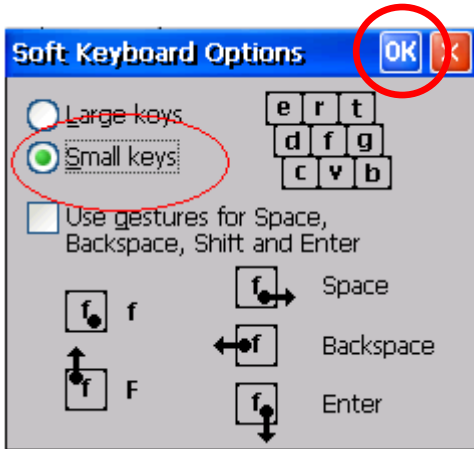


Step 3: Click the "Options" button.

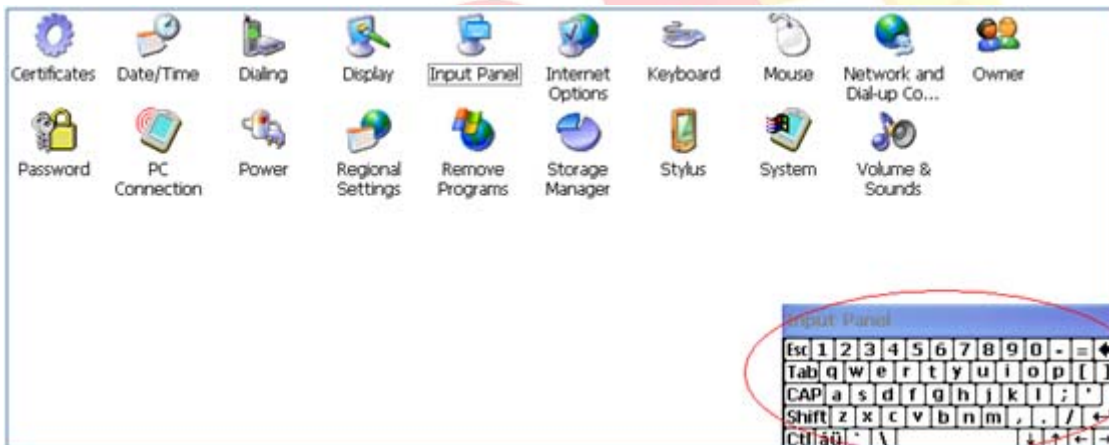


Classification	System and Application FAQ on WinCE PAC				No.	2-010-00	
Author	Tunglu-Yu	Version	1.0.0	Date	2010/2/12	Page	2/2

Step 4: Select Small keys and then click the “OK” button.



Step 5: After performing steps 1 to 4, you will see the size of the input panel become small.



Step 6: Save the setting.

Start the WinPAC/ViewPAC Utility on the desktop, click the “File” → ”Save” menu option, and then click the “Yes” button

