

Classification	System and Application FAQ on WinCE PAC				No.	2-007-00	
Author	Tunglu-Yu	Version	1.0.0	Date	2010/2/12	Page	1/7

How to add a shortcut to the desktop and programs

Applies to:

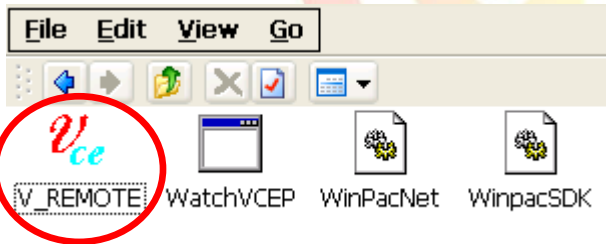
Platform	OS version	WinPAC/ViewPAC utility version
WP-8x3x	All versions	All versions
WP-8x4x	All versions	All versions
VP-25W1	All versions	All versions
VP-23W1	All versions	All versions

Here we discuss how to add a shortcut to the desktop and start menu that can be saved after power off and on in part1, and how to delete the shortcut(s) in part2.

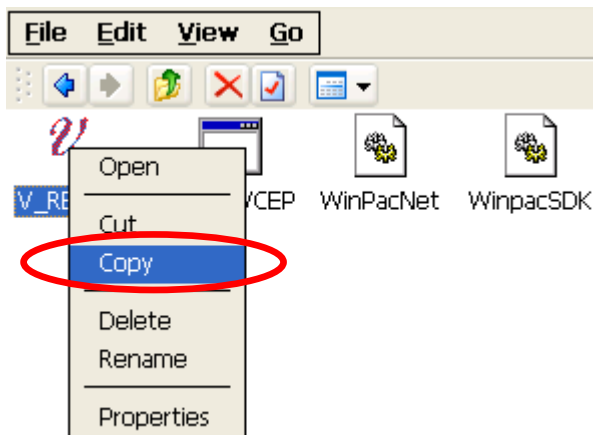
Part 1. Adding a shortcut to the desktop

Step 1: Create a shortcut.

1.1. Select the file for which you want create a shortcut.

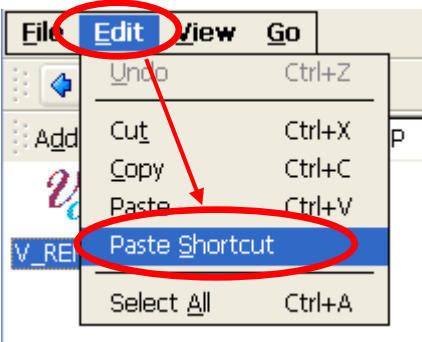


1.2. Right click the file name and then click "Copy".

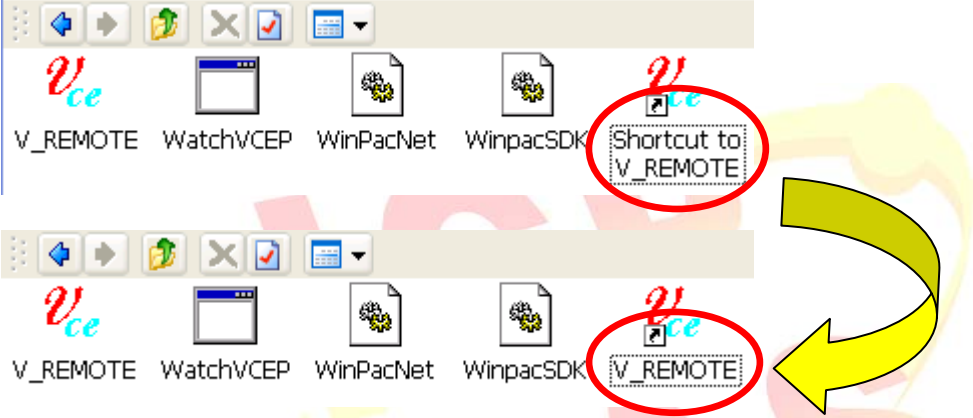


Classification	System and Application FAQ on WinCE PAC				No.	2-007-00	
Author	Tunglu-Yu	Version	1.0.0	Date	2010/2/12	Page	2/7

1.3. Click the **“Edit”** menu option and then click **“Paste Shortcut”**.



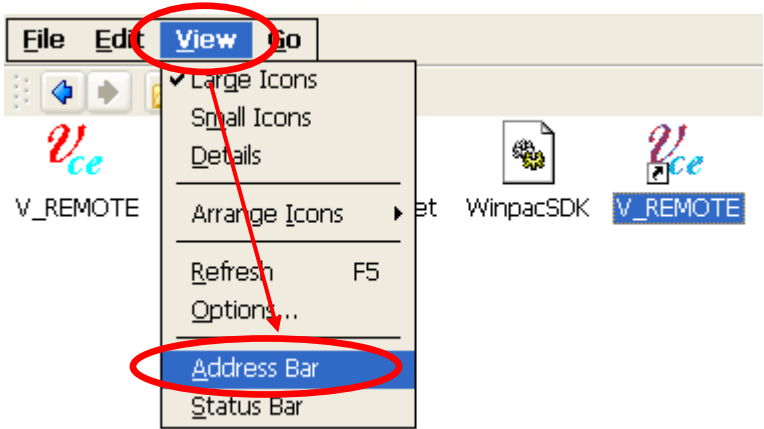
1.4. Rename the shortcut “shortcut to xx.ink” into **“xx.ink”**



Step 2: Add the shortcut to the desktop and programs menu.

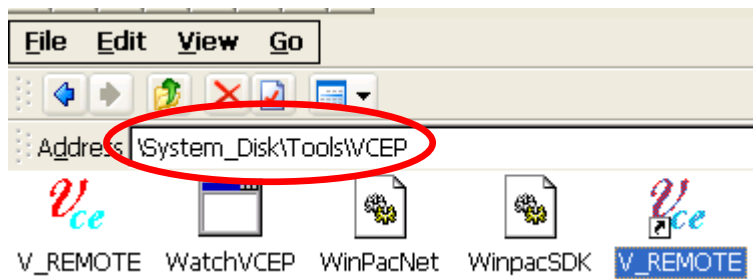
2.1. Get the path for the shortcut.

a. Click the **“View”** menu option, and then click **“Address Bar”**.



Classification	System and Application FAQ on WinCE PAC				No.	2-007-00	
Author	Tunglu-Yu	Version	1.0.0	Date	2010/2/12	Page	3/7

b. Remember the path for the file.

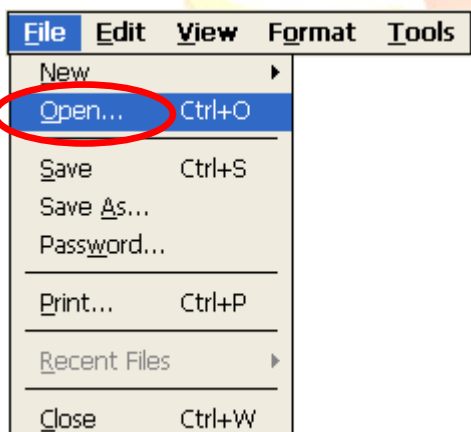


2.2. Open "Autolnit.bat" file with using Microsoft WordPad.

a. Double Click the Microsoft WordPad icon on the desktop.

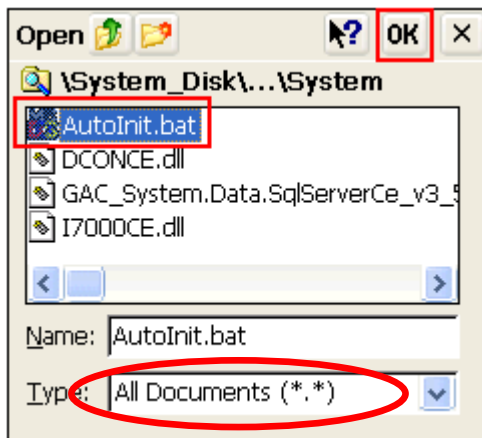


b. Click the "File" menu option, and then click the "Open" item.

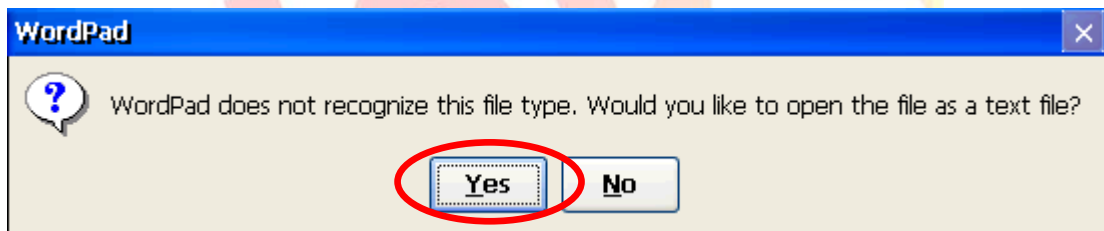


Classification	System and Application FAQ on WinCE PAC				No.	2-007-00	
Author	Tunglu-Yu	Version	1.0.0	Date	2010/2/12	Page	4/7

c. Open the “**AutoInit.bat**” file from the “\System_Disk\ICPDAS\System” folder.



d. Click the “**Yes**” button to open the file.



Classification	System and Application FAQ on WinCE PAC				No.	2-007-00	
Author	Tunglu-Yu	Version	1.0.0	Date	2010/2/12	Page	5/7

2.3. Add the shortcut information to “Autolnit.bat”.

```

copy \\System_Disk\Tools\WinPAC_Utility\WINPAC_Utility.lnk \\Windows\Desktop
copy \\System_Disk\Tools\WinPAC_Utility\WINPAC_Utility.lnk \\Windows\Programs
copy \\System_Disk\Tools\RegistryViewer\RegView.lnk \\Windows\Desktop
copy \\System_Disk\Tools\RegistryViewer\RegView.lnk \\Windows\Programs
copy \\System_Disk\Tools\TaskMgr\TaskMgr.lnk \\Windows\Desktop
copy \\System_Disk\Tools\TaskMgr\TaskMgr.lnk \\Windows\Programs
copy \\System_Disk\Tools\ISQLW35\isqlw35.lnk \\Windows\Desktop
copy \\System_Disk\Tools\ISQLW35\isqlw35.lnk \\Windows\Programs
copy \\System_Disk\Tools\WinPAC_Utility\WINPAC_Utility.lnk \\Windows\@à±
copy \\System_Disk\Tools\WinPAC_Utility\WINPAC_Utility.lnk \\Windows\μ{;|¶°
copy \\System_Disk\Tools\RegistryViewer\RegView.lnk \\Windows\@à±
copy \\System_Disk\Tools\RegistryViewer\RegView.lnk \\Windows\μ{;|¶°
copy \\System_Disk\Tools\TaskMgr\TaskMgr.lnk \\Windows\@à±
copy \\System_Disk\Tools\TaskMgr\TaskMgr.lnk \\Windows\μ{;|¶°
copy \\System_Disk\Tools\ISQLW35\isqlw35.lnk \\Windows\@à±
copy \\System_Disk\Tools\ISQLW35\isqlw35.lnk \\Windows\μ{;|¶°
copy \\System_Disk\Tools\WinPAC_Utility\WINPAC_Utility.lnk \\Windows\×ÀÄæ
copy \\System_Disk\Tools\WinPAC_Utility\WINPAC_Utility.lnk \\Windows\³IDò
copy \\System_Disk\Tools\RegistryViewer\RegView.lnk \\Windows\×ÀÄæ
copy \\System_Disk\Tools\RegistryViewer\RegView.lnk \\Windows\³IDò
copy \\System_Disk\Tools\TaskMgr\TaskMgr.lnk \\Windows\×ÀÄæ
copy \\System_Disk\Tools\TaskMgr\TaskMgr.lnk \\Windows\³IDò
copy \\System_Disk\Tools\ISQLW35\isqlw35.lnk \\Windows\×ÀÄæ
copy \\System_Disk\Tools\ISQLW35\isqlw35.lnk \\Windows\³IDò
copy \\System_Disk\Tools\VCEP\w_remote.lnk \\Windows\Desktop
copy \\System_Disk\Tools\VCEP\w_remote.lnk \\Windows\Programs

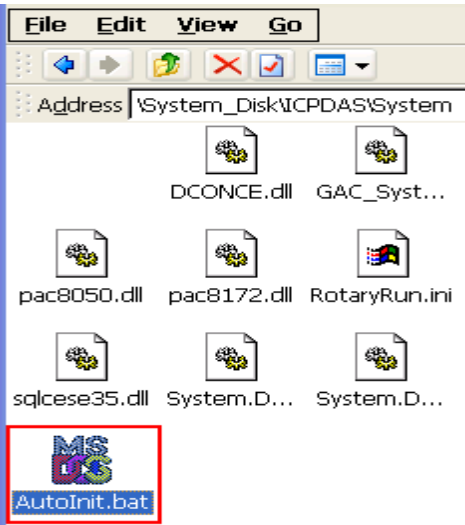
```

2.4. Click “File”, and then click “Save” to save the edit.

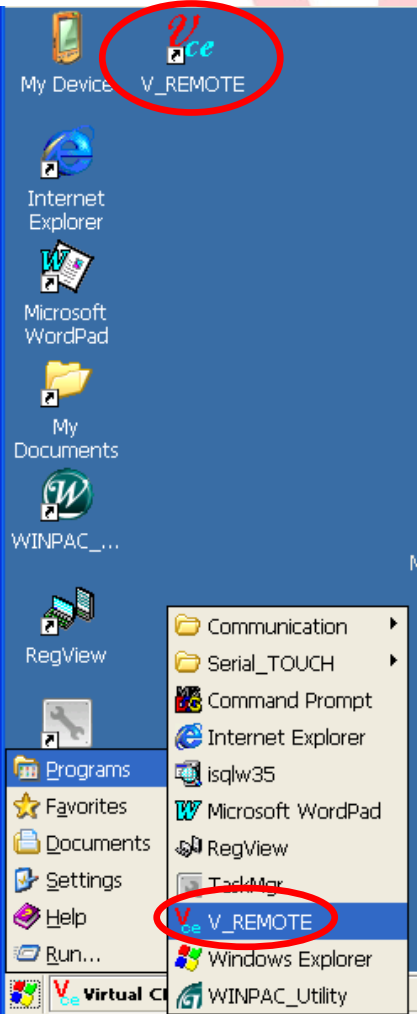
File	Edit	View	Format	Tools
New				\\WinPAC_Utilit
Open...	Ctrl+O			\\WinPAC_Utilit
Save	Ctrl+S			\\RegistryViewer
Save As...				\\TaskMgr\Task
Password...				\\TaskMgr\Task
Print...	Ctrl+P			\\ISQLW35\isqlw
Recent Files				\\WinPAC_Utilit
Close	Ctrl+W			\\RegistryViewer

Classification	System and Application FAQ on WinCE PAC				No.	2-007-00	
Author	Tunglu-Yu	Version	1.0.0	Date	2010/2/12	Page	6/7

2.5. Double click the “**AutoInit.bat**” file icon in the “\System_Disk\ICPDAS\System” folder.



The shortcut files will appear on the “Desktop” and in the “Programs” menu.

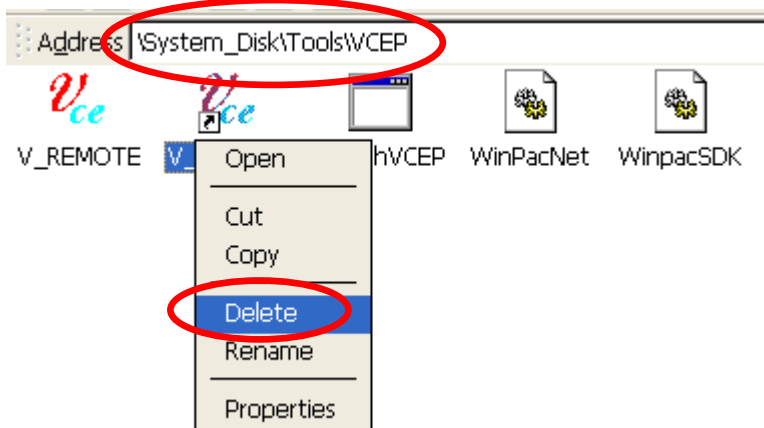


Classification	System and Application FAQ on WinCE PAC				No.	2-007-00	
Author	Tunglu-Yu	Version	1.0.0	Date	2010/2/12	Page	7/7

Part 2. Removing a shortcut on the desktop

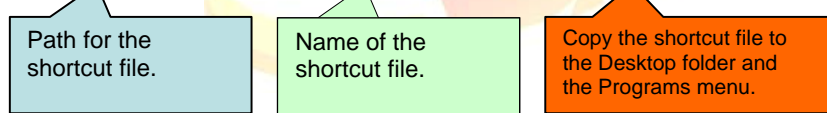
To remove the shortcut(s) on the desktop and the programs menu, you need to delete the shortcut file created and the related information in "Autolnit.bat" file.

Step 1. Go to the location of the Shortcut file and delete it.



Step 2. Delete the item information from the Autolnit.bat file.

```
copy \System_Disk\Tools\RegistryViewer\RegView.lnk \Windows\AAæ
copy \System_Disk\Tools\RegistryViewer\RegView.lnk \Windows\IDð
copy \System_Disk\Tools\TaskMgr\TaskMgr.lnk \Windows\AAæ
copy \System_Disk\Tools\TaskMgr\TaskMgr.lnk \Windows\IDð
copy \System_Disk\Tools\SQLW35\isqlw35.lnk \Windows\AAæ
copy \System_Disk\Tools\SQLW35\isqlw35.lnk \Windows\IDð
copy \System_Disk\Tools\WCEP\v_remote.lnk \Windows\Desktop
copy \System_Disk\Tools\WCEP\v_remote.lnk \Windows\Programs
```



```
copy \System_Disk\Tools\RegistryViewer\RegView.lnk \Windows\AAæ
copy \System_Disk\Tools\RegistryViewer\RegView.lnk \Windows\IDð
copy \System_Disk\Tools\TaskMgr\TaskMgr.lnk \Windows\AAæ
copy \System_Disk\Tools\TaskMgr\TaskMgr.lnk \Windows\IDð
copy \System_Disk\Tools\SQLW35\isqlw35.lnk \Windows\AAæ
copy \System_Disk\Tools\SQLW35\isqlw35.lnk \Windows\IDð
```

Remove

Step 3. Save the file and reboot the device.