

Classification	System and Application FAQ on WinCE PAC				No.	2-004-00	
Author	Tunglu-Yu	Version	1.0.0	Date	2010/2/12	Page	1/4

# How to edit the registry

**Applies to:**

Platform	OS version	WinPAC/ViewPAC utility version
WP-8x3x	All versions	All versions
WP-8x4x	All versions	All versions
VP-25W1	All versions	All versions
VP-23W1	All versions	All versions

## Tips & Warnings



*Editing the registry may result in unexpected errors.*



*After finishing the editing, refer to section 4 to save those modifications*

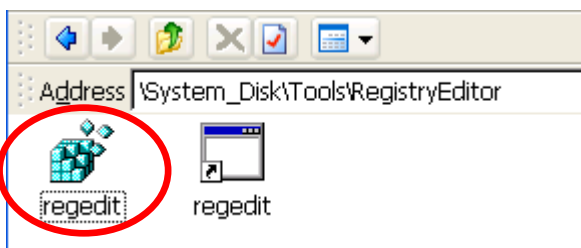
This article shows you how to edit the registry, how to add a new key and delete it; after you finish the editing, refer to section 4 to save those modifications.

The edit tool “**regedit.exe**” is located at

1. The “\System\_Disk\Tools\RegistryEditor” folder on the WinPAC/ViewPAC device.
2. [ftp://ftp.icpdas.com/pub/cd/winpac/napdos/wp-8x4x\\_ce50/system\\_disk/tools/registryeditor](ftp://ftp.icpdas.com/pub/cd/winpac/napdos/wp-8x4x_ce50/system_disk/tools/registryeditor)

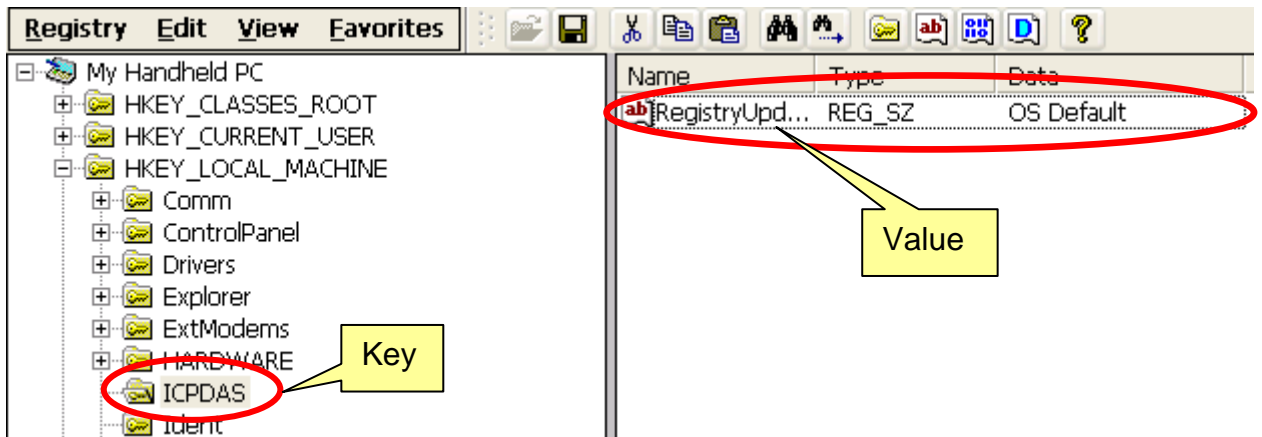
## 1. Editing the registry.

Step1. Double click the regedit.exe icon.

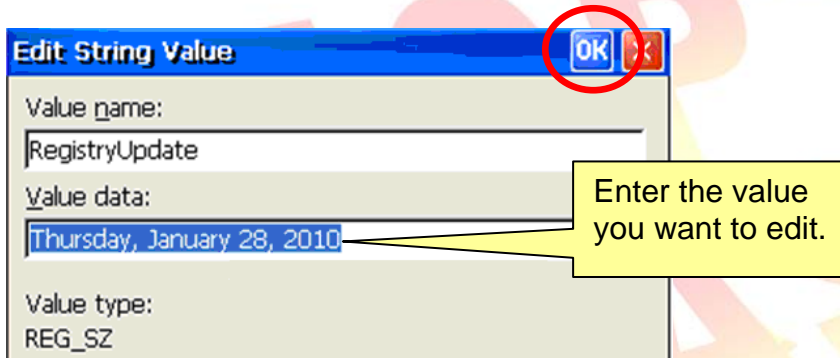


Classification	System and Application FAQ on WinCE PAC				No.	2-004-00	
Author	Tunglu-Yu	Version	1.0.0	Date	2010/2/12	Page	2/4

Step2. Select the key or value you want to edit.

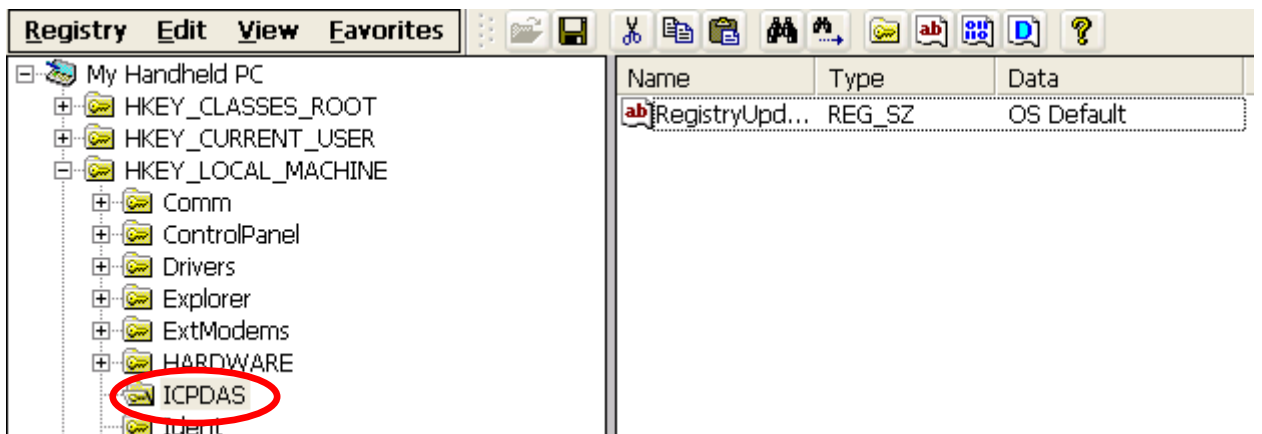


Step3. Double click the value you want to edit, enter the new value and then click "OK".



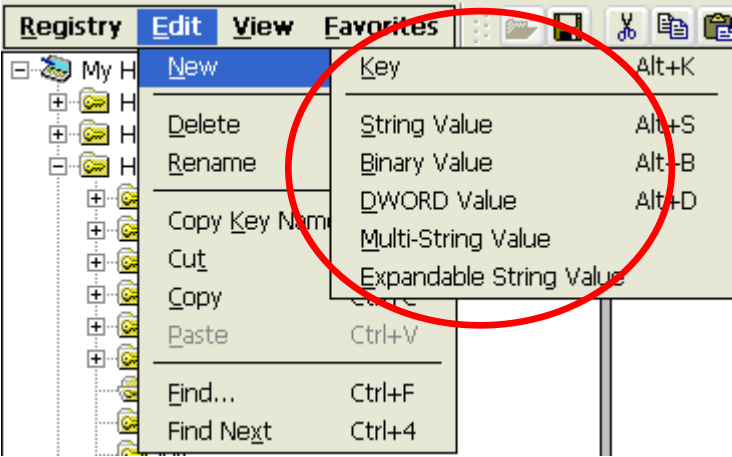
## 2. Adding a new sub key or value.

Step1. Go to the "Path" where you want to add a new sub key or value.

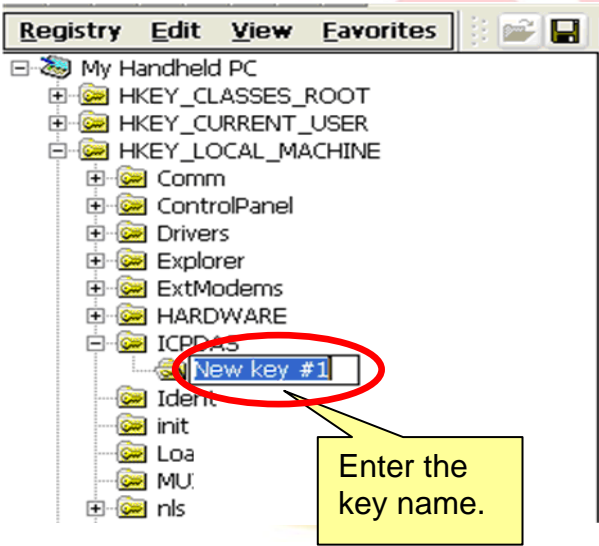


Classification	System and Application FAQ on WinCE PAC				No.	2-004-00	
Author	Tunglu-Yu	Version	1.0.0	Date	2010/2/12	Page	3/4

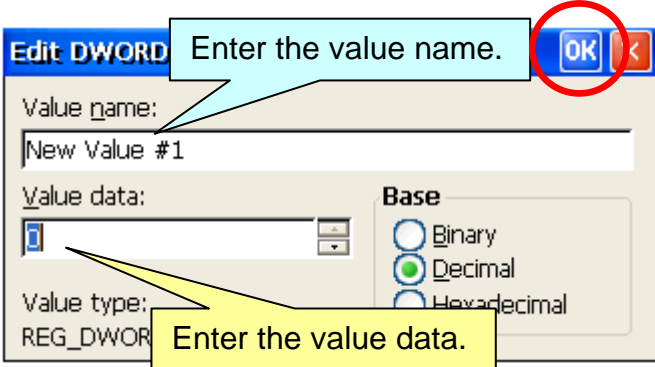
Step2. Click “Edit” → “New” on the menu and select an item you need.



Step3. Enter the key name.



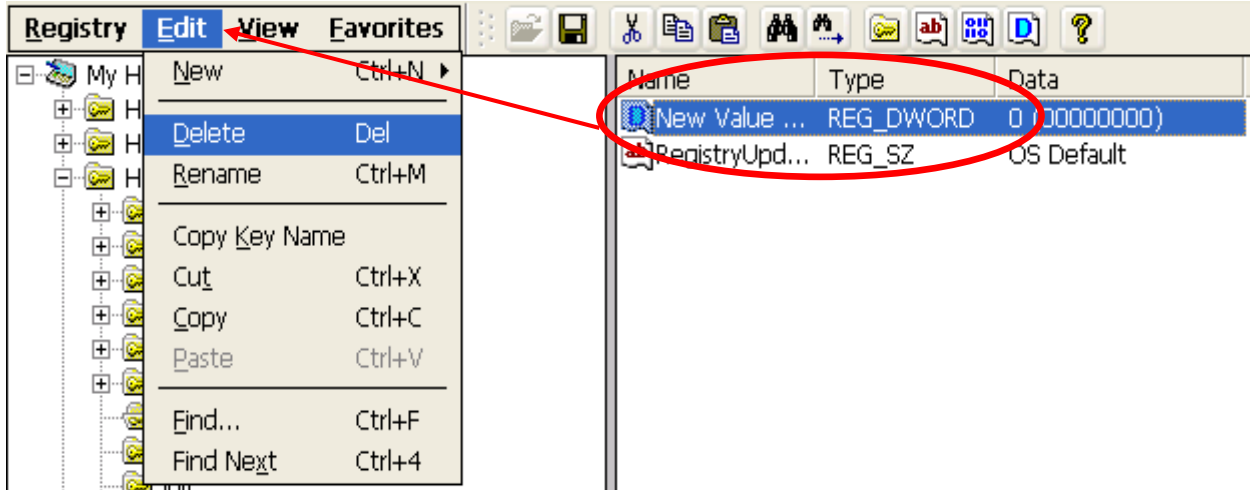
Step4. Key in the value name and value data, and then click “OK”.



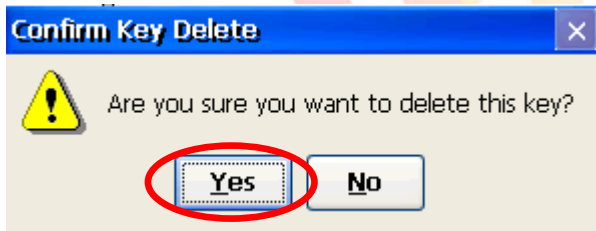
Classification	System and Application FAQ on WinCE PAC				No.	2-004-00	
Author	Tunglu-Yu	Version	1.0.0	Date	2010/2/12	Page	4/4

### 3. Deleting a key or value.

Step1. Click the key or value you want to delete, and then click **“Edit”** → **“Delete”**.

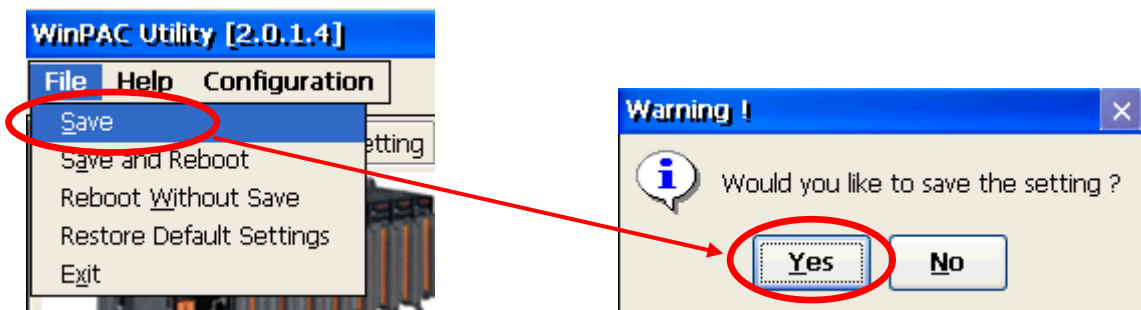


Step2. Click **“Yes”** to confirm deletion.



### 4. Saving the registry modification

Step1. Start the WinPAC/ViewPAC Utility, click **“File”** → **“Save”**.



Step2. Click the **“Yes”** button.