

Classification	System and Application FAQ on WinCE PAC				No.	2-001-00	
Author	Tunglu-Yu	Version	1.0.1	Date	2011/07/04	Page	1/13

How to use VCEP to remotely control and monitor WinPAC and ViewPAC from anywhere on the Ethernet

Applies to:

Platform	OS version	WinPAC/ViewPAC utility version
WP-8x3x/ WP-8x4x	All versions	All versions
WP-5000	All versions	All versions
VP-23W1/ VP-25W1	All versions	All versions
VP-4131	All versions	All versions

The ICP DAS VCEP is designed to help you manage your WinPAC/ViewPAC for any location. No matter where you are, the ICP DAS VCEP provides a convenient environment on your PC to remotely control the WinPAC and ViewPAC, capture screen of the WinCE PAC on PC, and synchronize files on the two sides and record screen activity to video.

The ICP DAS VCEP is composed of two main components: one is the 'Server' running on WinCE PAC and the other is the 'Client' running on a regular PC. Once a connection is established between the client and server, the client periodically requests screen updates and sends mouse/key events to the server.



For more detailed information on VCEP applications, please refer to:

http://www.icpdas.com/products/PAC/wincon-8000/wincon_VirtualCE.htm

Classification	System and Application FAQ on WinCE PAC				No.	2-001-00	
Author	Tunglu-Yu	Version	1.0.1	Date	2011/07/04	Page	2/13

In this document it introduces

1. How to get started with VCEP to link the WinPAC or ViewPAC via the LAN (page 2)
2. How to get started with VCEP to link the WinPAC or ViewPAC via the WAN (page 6)
3. After VCEP 5.0, make the WinPAC/ ViewPAC active Connection from Server (page 10)
4. How to make the VCEP server always on over the PAC working time period (page 13)

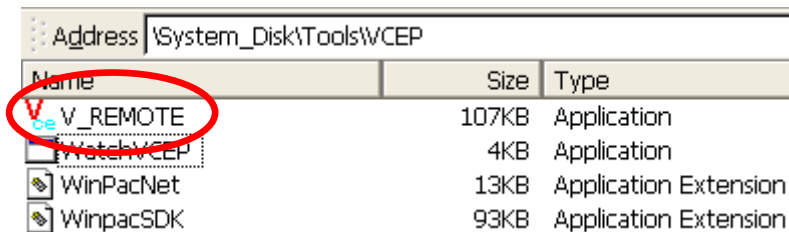
1. Linking the WinPAC or ViewPAC via the LAN

You just need to run the VCEP server on PAC controller, and then configure the VCEP client on the PC. The VCEP client would scan all the servers on the LAN automatically and list them for you to select one server to link with.

Note: If your WinPAC/ViewPAC is behind the firewall, please make sure to keep port **1899** and **1903** open.

Step 1: execute VCEP server on WinPAC/ ViewPAC side

Go to “\System_disk\Tools\VCEP” folder and double click **v_remote.exe**.



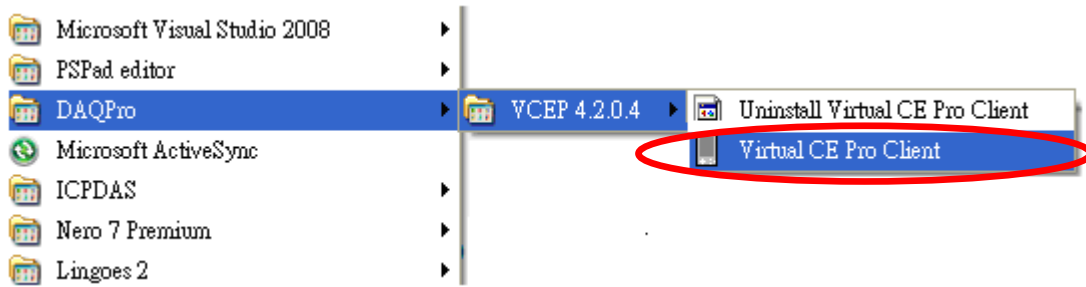
Step2: install the VCEP client on PC side

The “vcep_x.x.x.x.exe” file in vcep_x.x.x.x folder is located at Companion CD: \napdos\wp-8x4x_ce50\pc_tools\ or

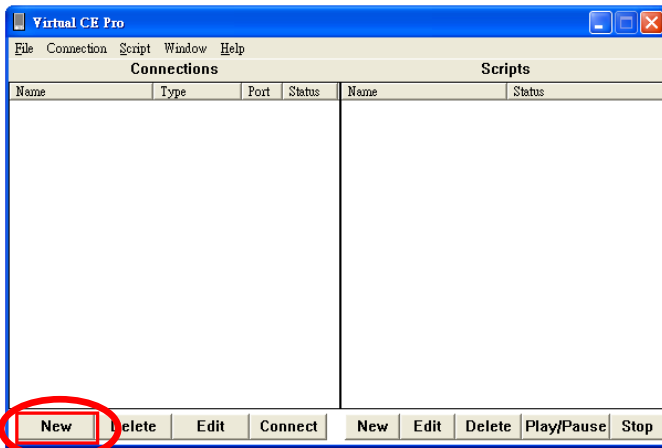
ftp://ftp.icpdas.com/pub/cd/winpac/napdos/wp-8x4x_ce50/pc_tools/

Classification	System and Application FAQ on WinCE PAC				No.	2-001-00	
Author	Tunglu-Yu	Version	1.0.1	Date	2011/07/04	Page	3/13

Step 3: run the "Virtual CE Pro Client" installed in step2

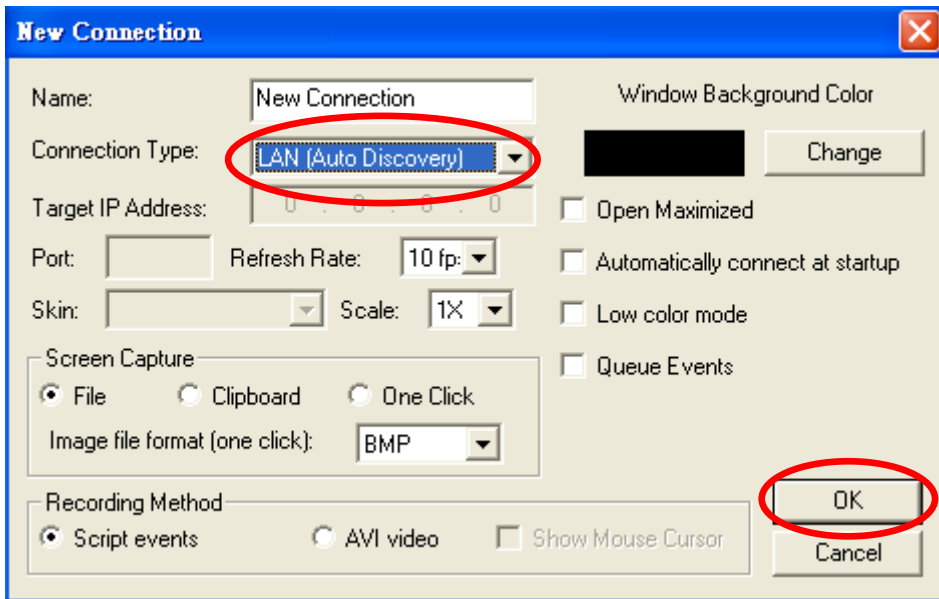


Step 4: click the "New" button to add a new connection.

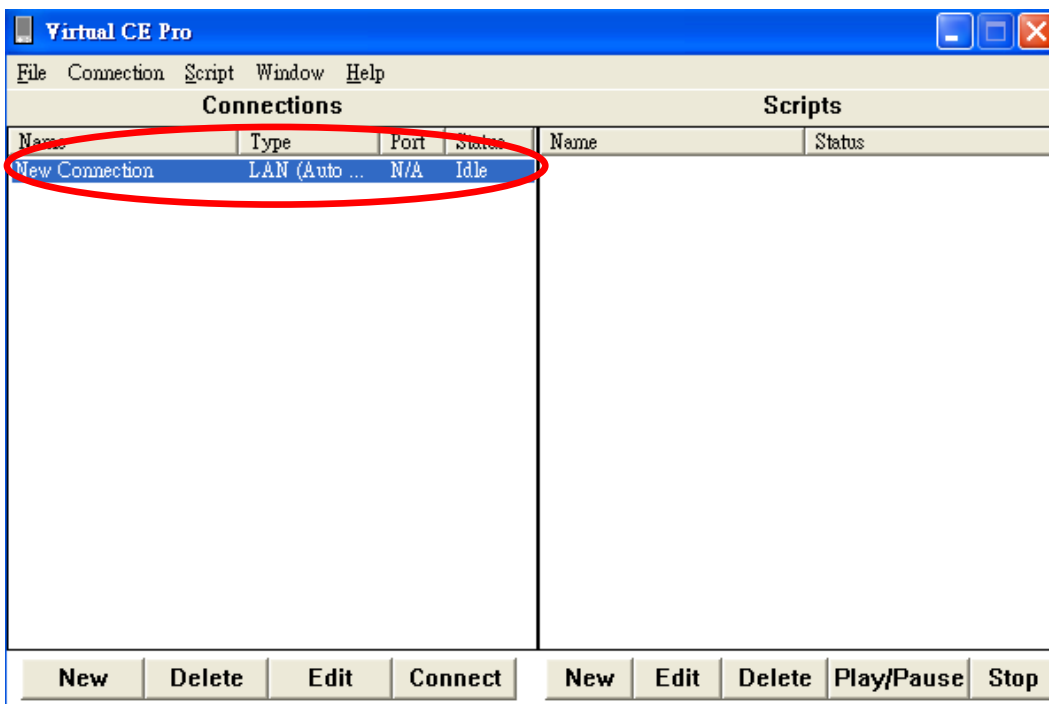


Classification	System and Application FAQ on WinCE PAC				No.	2-001-00	
Author	Tunglu-Yu	Version	1.0.1	Date	2011/07/04	Page	4/13

Step 5: enter a name in the “Name” textbox, choose the “LAN (Auto Discovery)” item from the “Connection Type” comboBox and click the “OK” button.



The new connection is created in the “Connections” and listed as shown below.

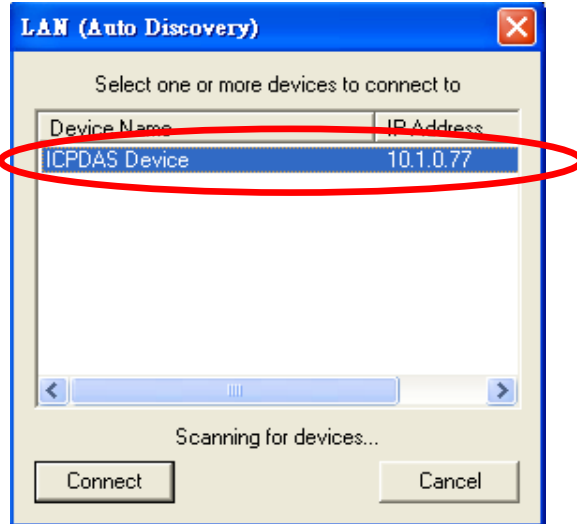


Classification	System and Application FAQ on WinCE PAC				No.	2-001-00	
Author	Tunglu-Yu	Version	1.0.1	Date	2011/07/04	Page	5/13

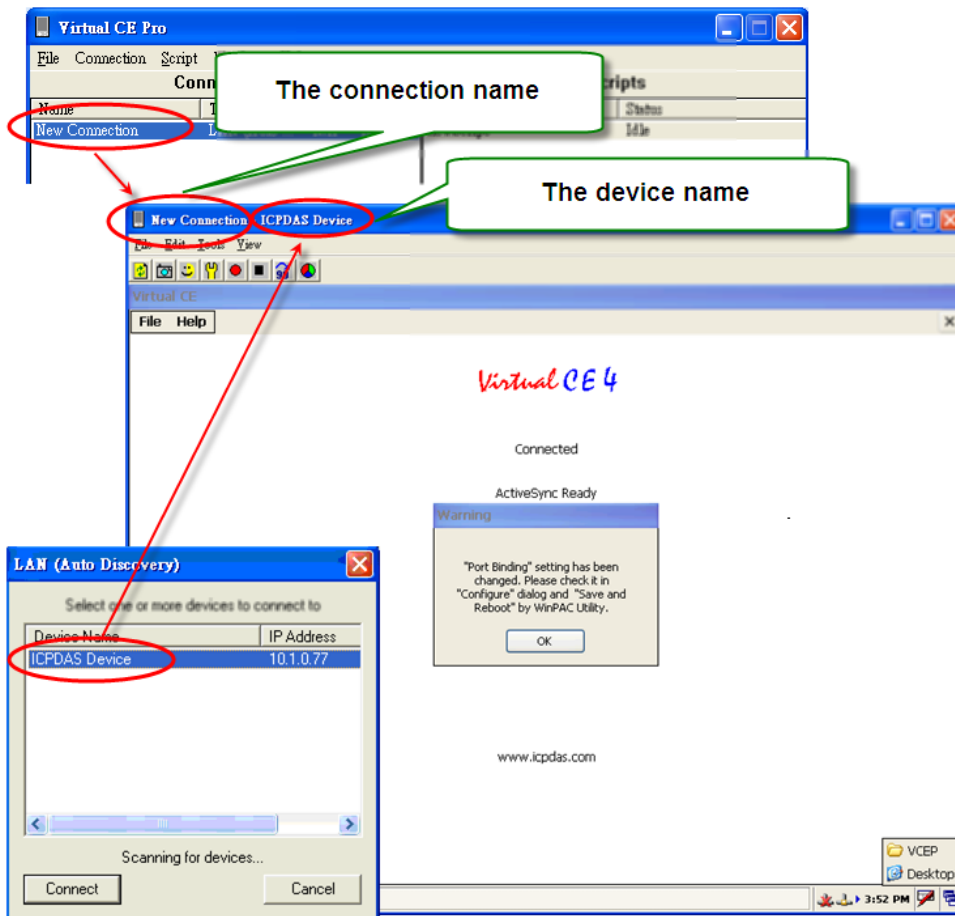
Step 6: Double click the new connection you named in the “Connections” list; the VCEP client program starts to scan the servers on the LAN.

The PAC which is running the v_remote.exe will be searched and added to the device list.

For example, the server is listed with Device Name “ICPDAS Device” and IP Address “10.1.0.77”.



Step 7: Double click the target server; the desktop of the remote PAC will be displayed on the Host PC.

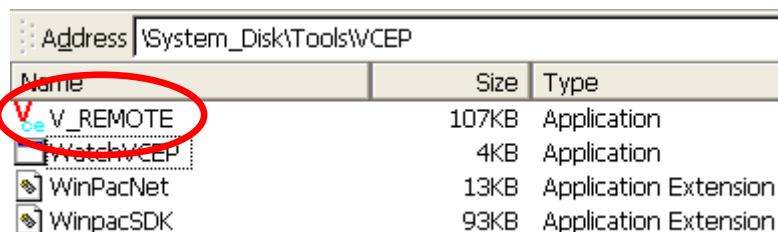


Classification	System and Application FAQ on WinCE PAC				No.	2-001-00	
Author	Tunglu-Yu	Version	1.0.1	Date	2011/07/04	Page	6/13

2. Linking the WinPAC or ViewPAC via the WAN

Step 1: execute VCEP server on the WinPAC/ ViewPAC side

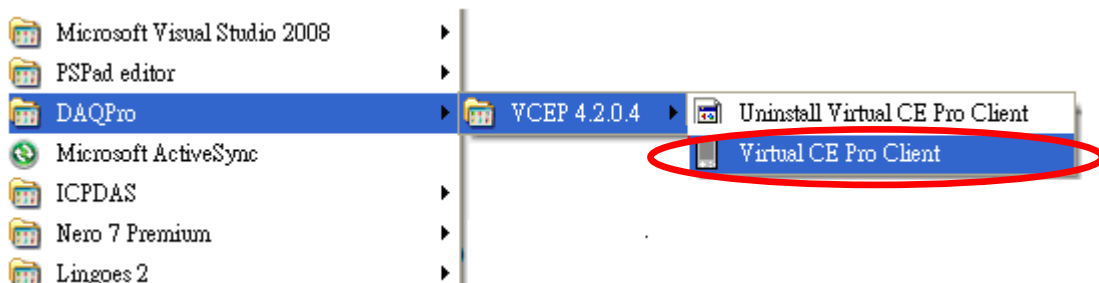
Go to “\System_disk\Tools\VCEP” folder and double click **v_remote.exe**.



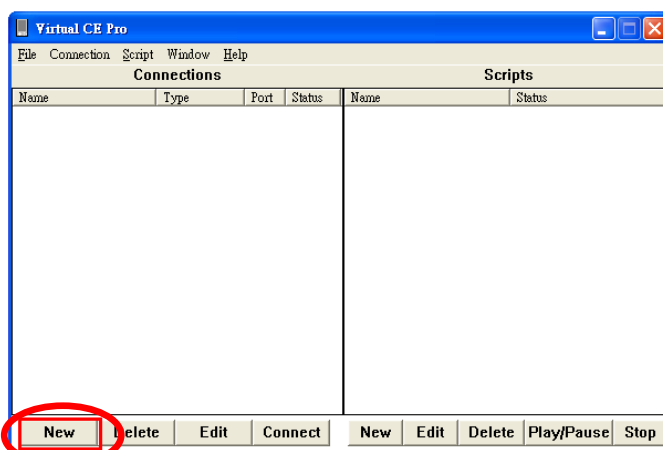
Step2: install VCEP client on the host PC side

The “vcep_x.x.x.x.exe” file in vcep_x.x.x.x folder is located at Companion CD:\napdos\wp-8x4x_ce50\pc_tools\ or ftp://ftp.icpdas.com/pub/cd/winpac/napdos/wp-8x4x_ce50/pc_tools/

Step 3: run the “Virtual CE Pro Client” installed.



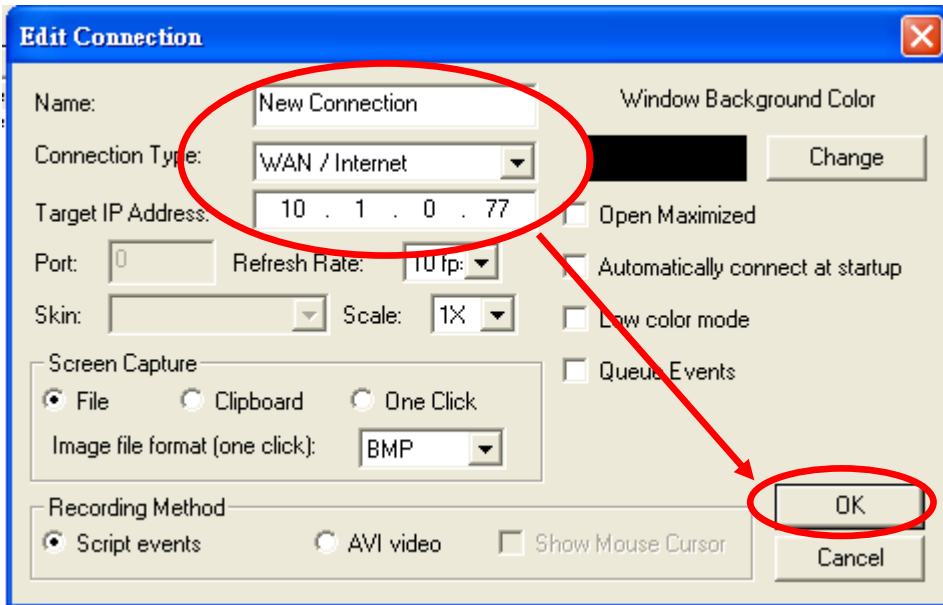
Step 4: click the “New” button to add a new connection.



Classification	System and Application FAQ on WinCE PAC				No.	2-001-00	
Author	Tunglu-Yu	Version	1.0.1	Date	2011/07/04	Page	7/13

Step 5:

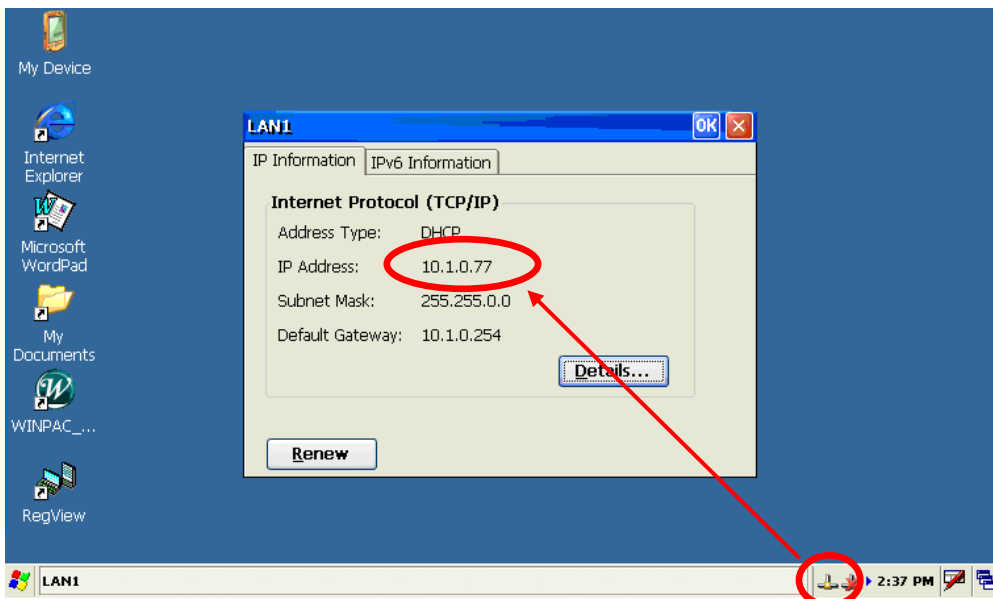
- 5.1 Enter a name in the “Name” textbox
- 5.2 Choose the “WAN / Internet” item from the “Connection Type” comboBox
- 5.3 Enter the IP address of PAC (server) in the “Target IP Address” address box.
- 5.4 Click the “OK” button.



Tips & Warnings

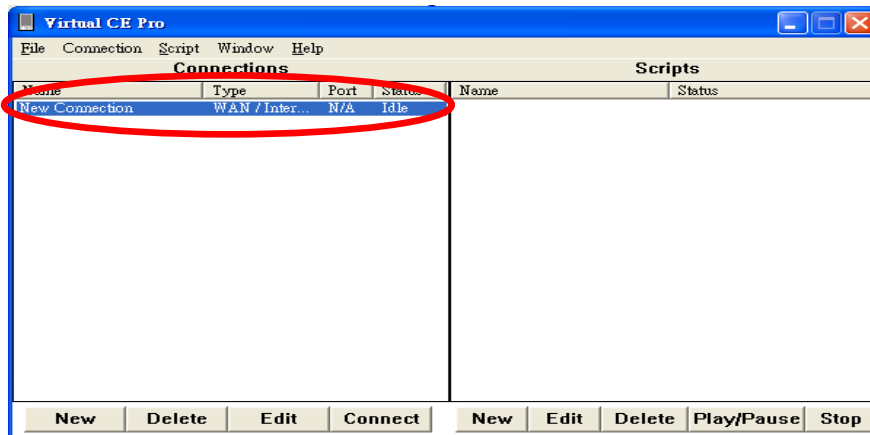


Get the IP Address of the PAC by double-clicking the connection icon on the task bar of the PAC.

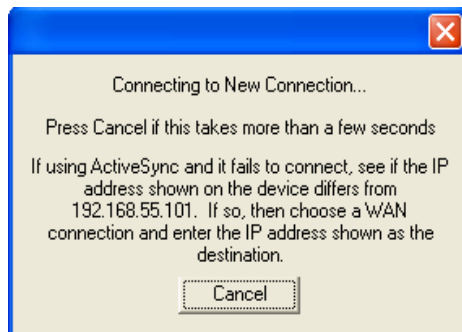


Classification	System and Application FAQ on WinCE PAC				No.	2-001-00	
Author	Tunglu-Yu	Version	1.0.1	Date	2011/07/04	Page	8/13

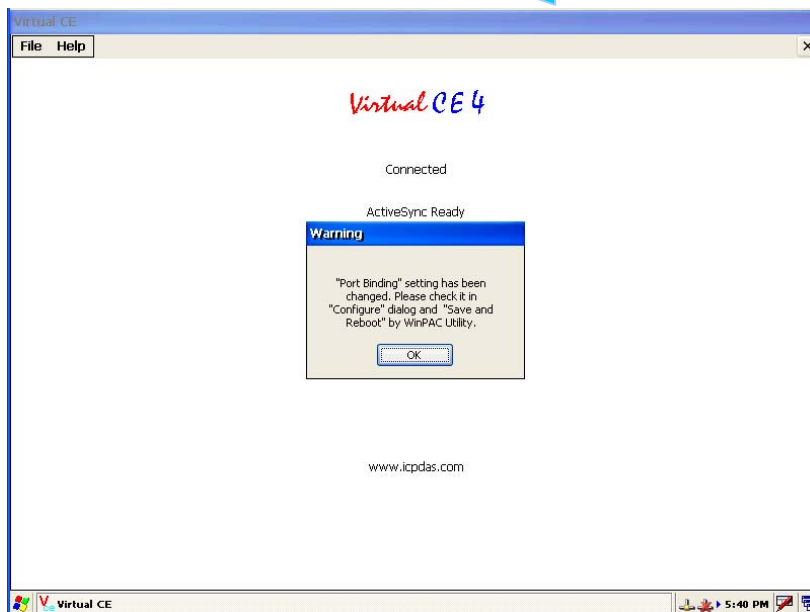
Step 6: double click the new connection you created.



Step 7: wait few seconds for connection establishment. (Don't click the "Cancel" button.)



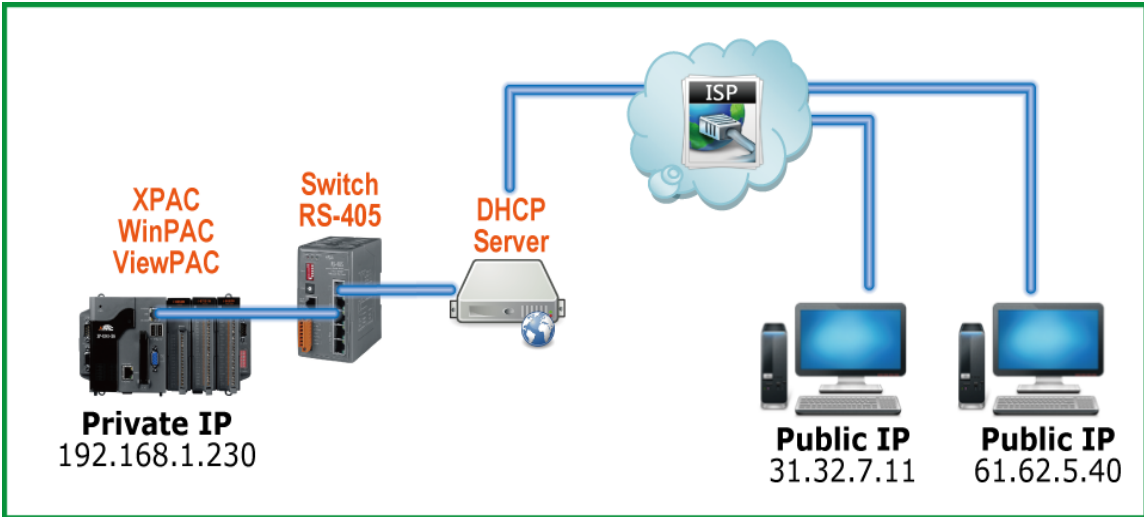
When the connection is established, the PAC Desktop is displayed on the Host PC.



Classification	System and Application FAQ on WinCE PAC				No.	2-001-00	
Author	Tunglu-Yu	Version	1.0.1	Date	2011/07/04	Page	9/13

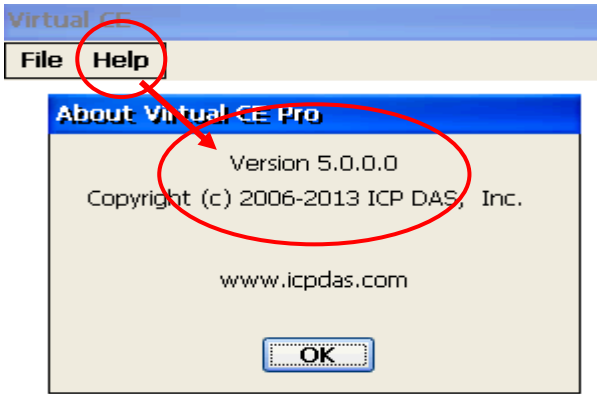
3. How to connect the host PC from WinPAC/ViewPAC server with VCEP v5.x and later

In some situation, WinPAC/XPAC/ViewPAC only has private IP in LAN, but needs to communicate with PC in WAN. It needs VCEP version 5.0 and later.

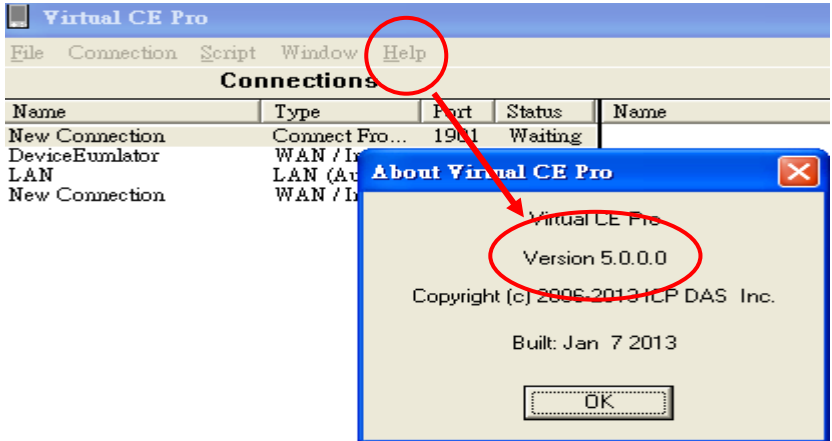


Step 1: Make sure the VCEP server and client is version 5.0 or later.

On the server side



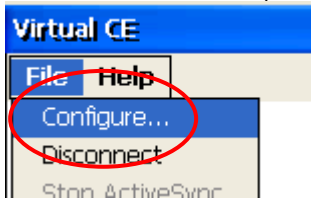
On the client side



Classification	System and Application FAQ on WinCE PAC				No.	2-001-00	
Author	Tunglu-Yu	Version	1.0.1	Date	2011/07/04	Page	10/13

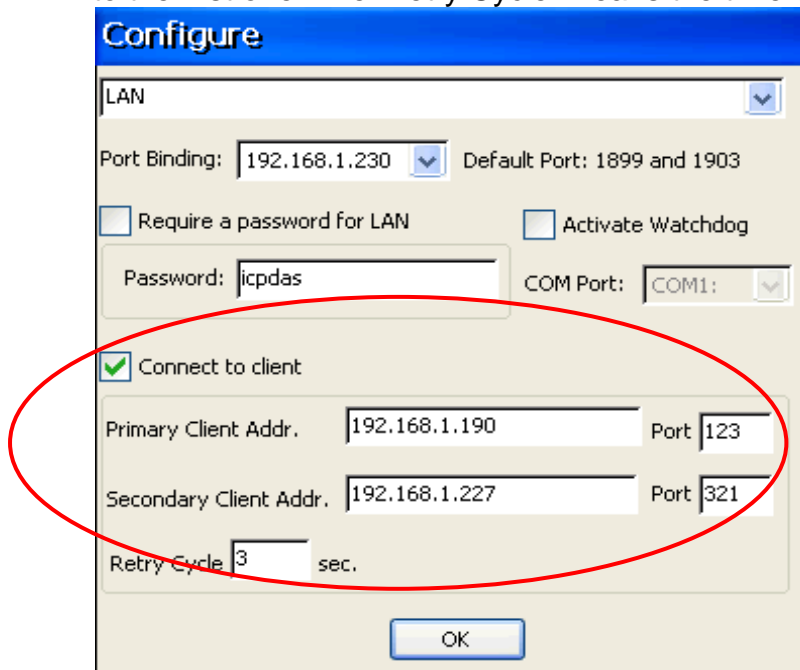
PAC side:

Step 2: On the server side (PAC), execute the VCEP, click “File” -> “Configure”.



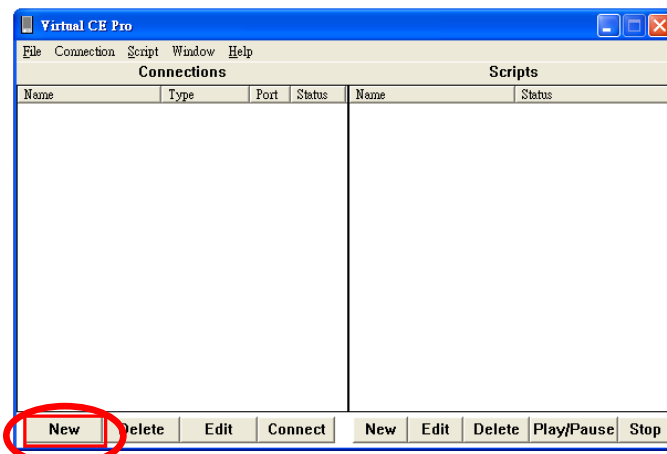
Step 3: Check ‘Connect to client’ and assign two ‘Client Addr.’ for active connection from WinPAC/ XPAC/ViewPAC and press the OK button.

If the first ‘Primary Client Addr.’ cannot be connected to, VCEP will connect to the second ‘Secondary Client Addr’ automatically. If the connection of the first ‘Client Addr.’ restore, you have to disconnect the second connection manually to connect to the first one. The ‘Retry Cycle’ means the time between two connections



PC side:

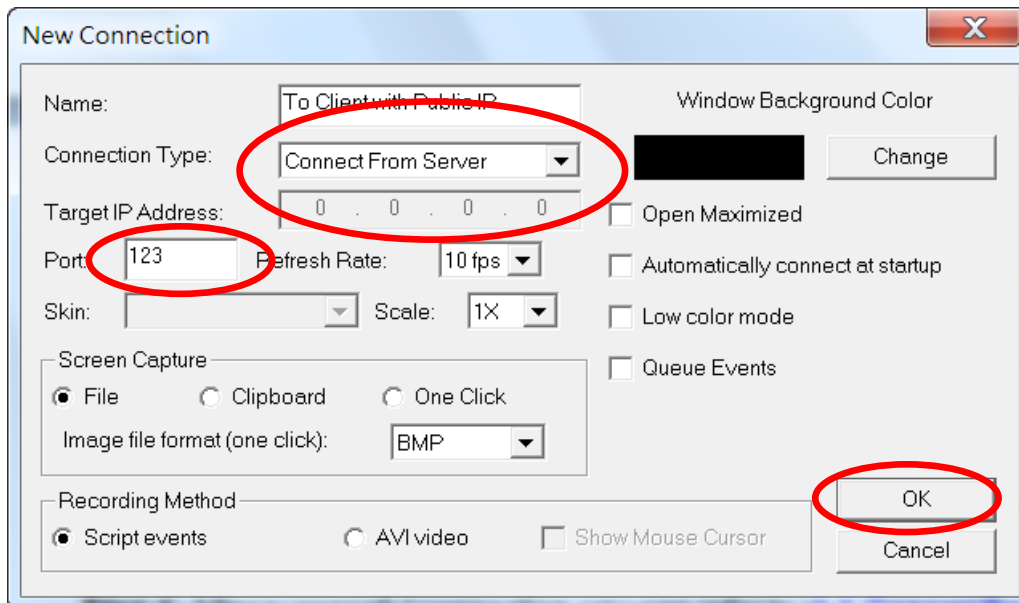
Step 4: Click the “New” button to add a new connection.



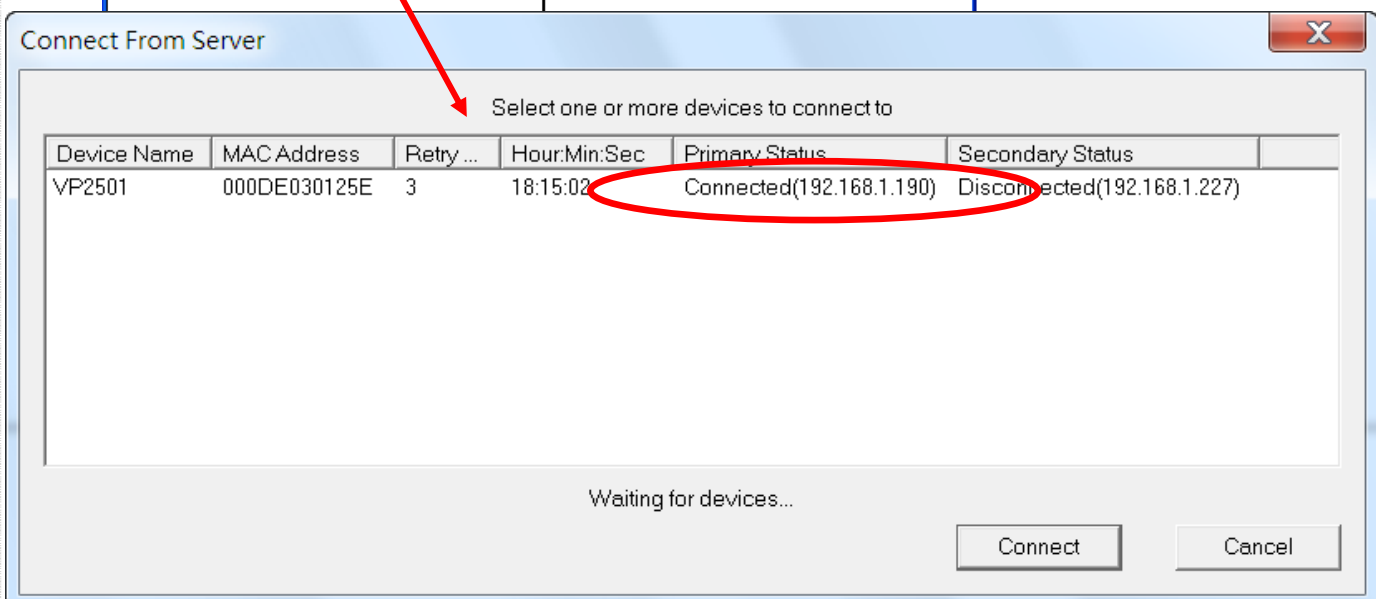
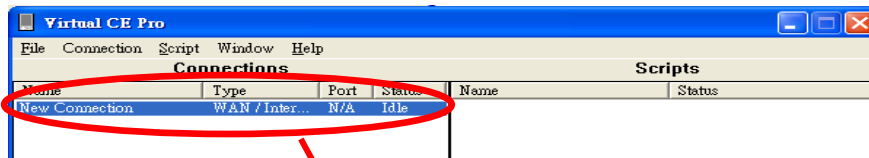
Classification	System and Application FAQ on WinCE PAC				No.	2-001-00	
Author	Tunglu-Yu	Version	1.0.1	Date	2011/07/04	Page	11/13

Step 5:

- 5.1 Enter a name in the “Name” textbox
- 5.2 Choose the “Connect From Server” item from the “Connection Type” comboBox
- 5.3 Enter the port number as which is set in the PAC in the “Port: ” textbox.
(The ‘Port’ number should be the same with the ‘Port’ number at **Step 3.**)
- 5.4 Click the “OK” button.



Step 6: Press the ‘Connect’ button and have patient waiting the connection from WinPAC/ViewPAC.



Classification	System and Application FAQ on WinCE PAC				No.	2-001-00	
Author	Tunglu-Yu	Version	1.0.1	Date	2011/07/04	Page	12/13

4. Reboot mode for VCEP server always on

When the PAC boots with the Rotary Switch set in the 6 position, the VCEP server runs automatically and keeps on over the period of PAC running time. It guarantees that the VCEP server works, even though the PAC reboots or the VCEP server is closed unexpectedly.

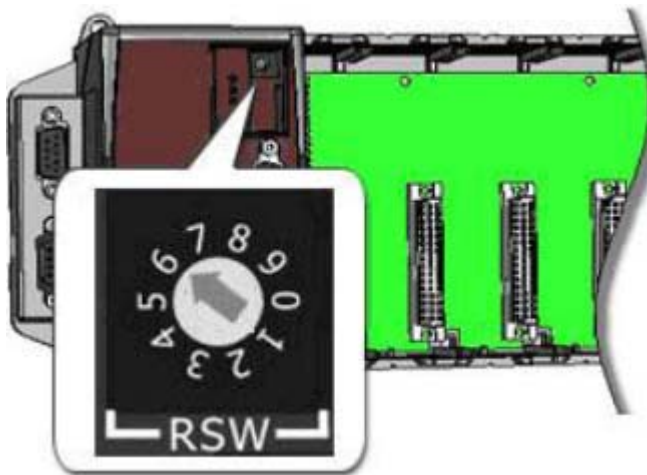
Tips & Warnings



To use the mode of the VCEP server always on with setting the Rotary Switch in the 6 position, update the OS to

1. V1.4.2.1 or later on the WP-8x4x.
2. V1.1.0.0 or later on the VP-25Wx.
3. V1.1.1.1 or later on the VP-23Wx.

Step 1: Turn the rotary switch to “6”, as shown below, and then reboot the PAC.



This mode sets the v_remote.exe (VCEP server) to start automatically at system startup and the server close.

Step 2: Run the steps in **Client configuration on PC Side** in the section according to your connection type above. (WAN or LAN)

Classification	System and Application FAQ on WinCE PAC				No.	2-001-00	
Author	Tunglu-Yu	Version	1.0.1	Date	2011/07/04	Page	13/13

Revision History

Revision	Date	Description
1.0.1	2013/07/04	NEW: Added support information for WP-5000 and VP-4131.
1.0.0	2010/02/12	Initial release