

Classification	System and Application FAQ on WinCE PAC				No.	1-009-02	
Author	Tunglu-Yu	Version	1.0.0	Date	2010/2/12	Page	1/3

How to change the display type for WP-8x3x

Applies to:

Platform	OS version	WinPAC/ViewPAC utility version
WP-8x3x	All versions	All versions
WP-8x4x	N/A	N/A
VP-25W1	N/A	N/A
VP-23W1	N/A	N/A

N/A: Not applicable to this platform and OS.

Tips & Warnings

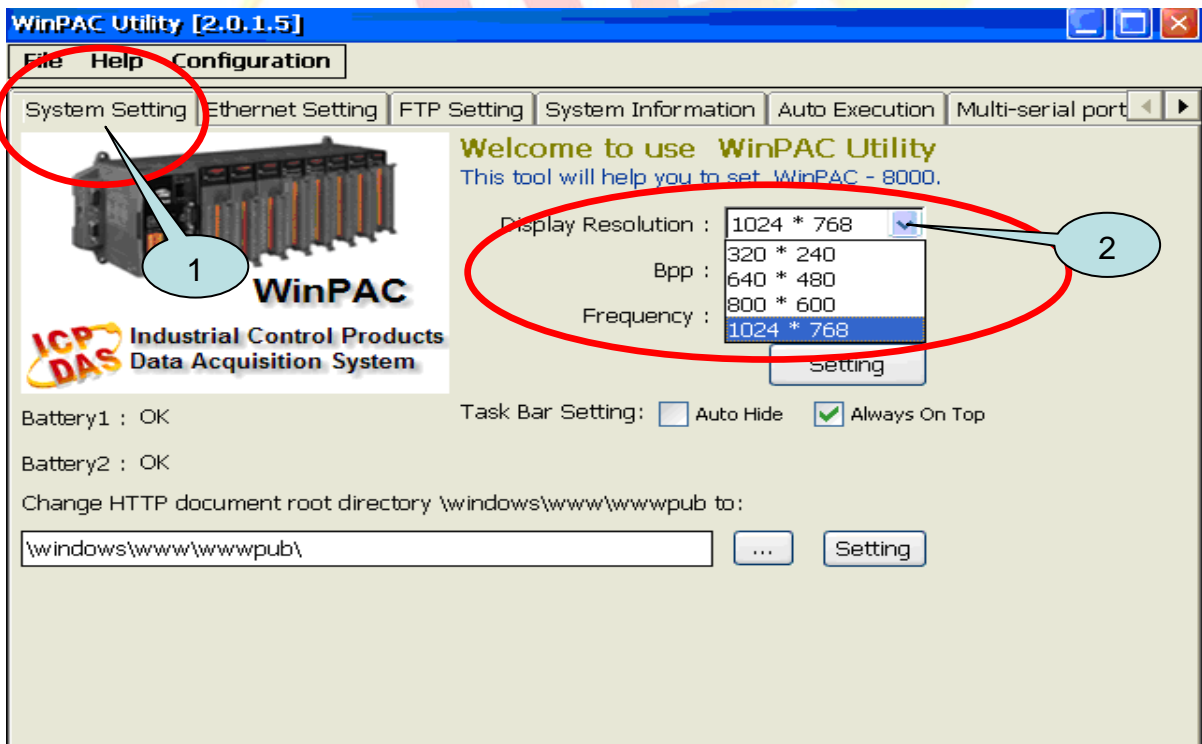


If your monitor doesn't support the display mode that you set, the monitor may not display correctly.

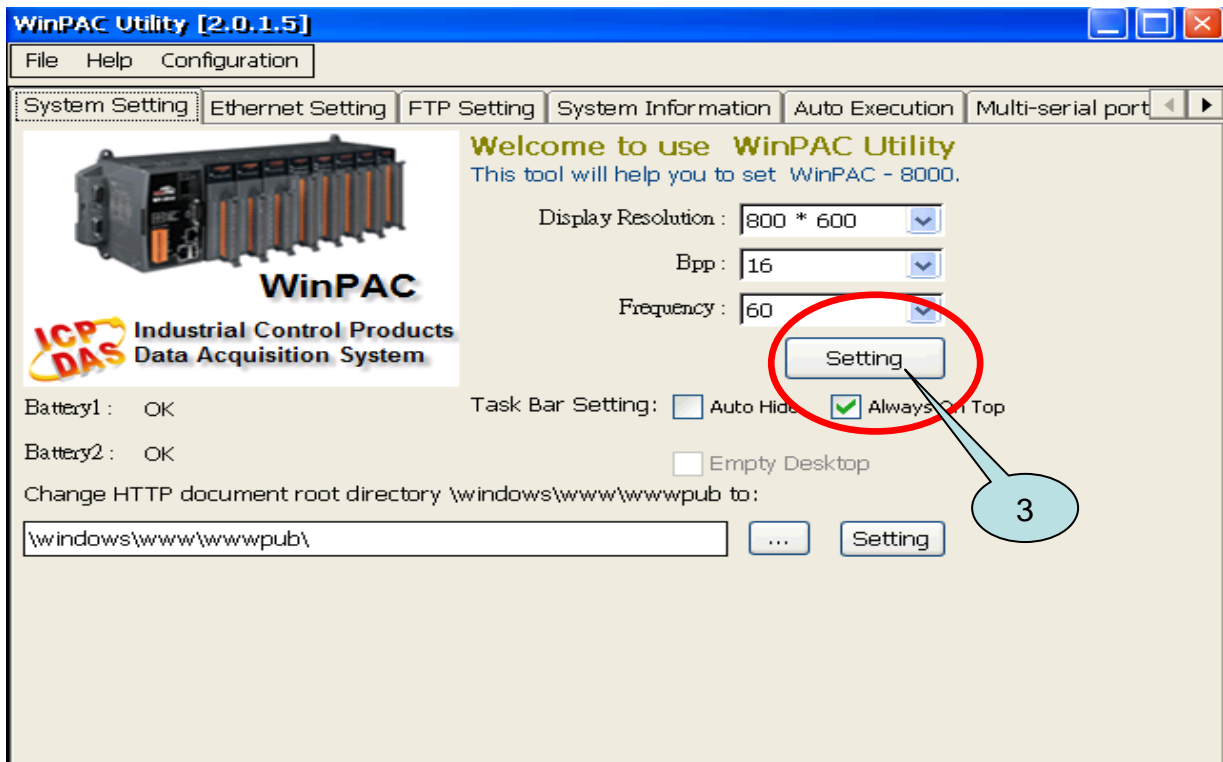
The default display resolution for WP-8x3x is "1024*768". To change the display mode for WP-8x3x, perform the following steps:

Step 1: Change the display resolution.

1.1. Start the WinPAC Utility on the desktop.

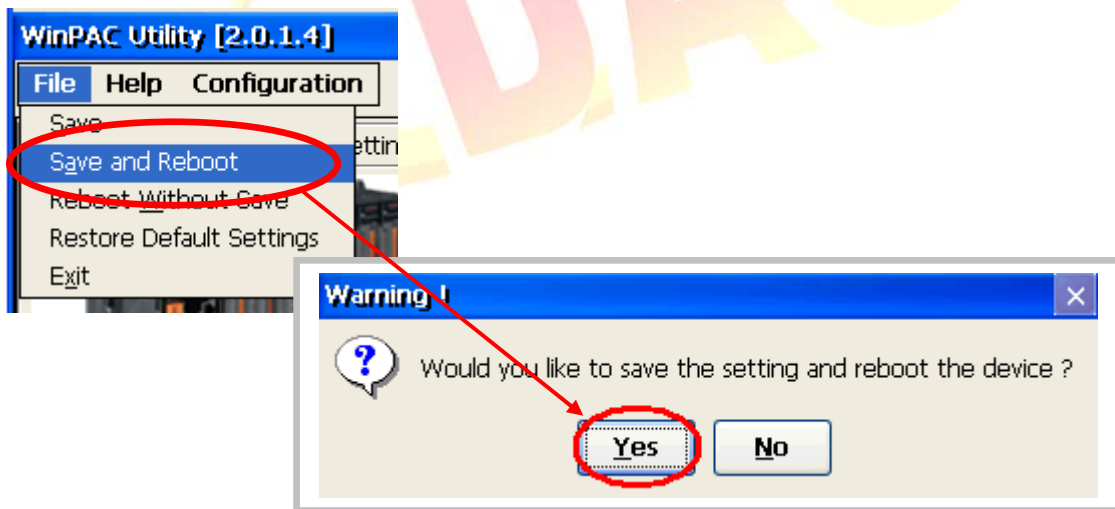


Classification	System and Application FAQ on WinCE PAC				No.	1-009-02	
Author	Tunglu-Yu	Version	1.0.0	Date	2010/2/12	Page	2/3



Step 2: Save and Reboot your WinPAC.

- 2.1. Start the Win PAC utility on the desktop and click **“File”** → **“Save and Reboot”**.
- 2.2. Click the **“Yes”** button and wait for the device to reboot.



Classification	System and Application FAQ on WinCE PAC				No.	1-009-02	
Author	Tunglu-Yu	Version	1.0.0	Date	2010/2/12	Page	3/3

Tips & Warnings



If nothing displayed on your monitor while booting, the display settings selected on the WP-8x3x may not be supported by your monitor.

*Please see the document "**W1-009-04**: How to change the display type for WP-8x3x when display out of range" for more details.*

