

Classification	System and Application FAQ on WinCE PAC				No.	1-008-00	
Author	Tunglu-Yu	Version	1.0.0	Date	2010/2/12	Page	1/8

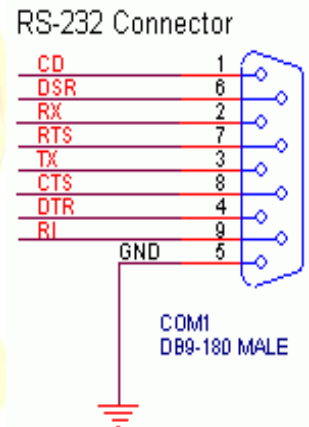
How to set up the I-7560 on WinPAC/ViewPAC

Applies to:

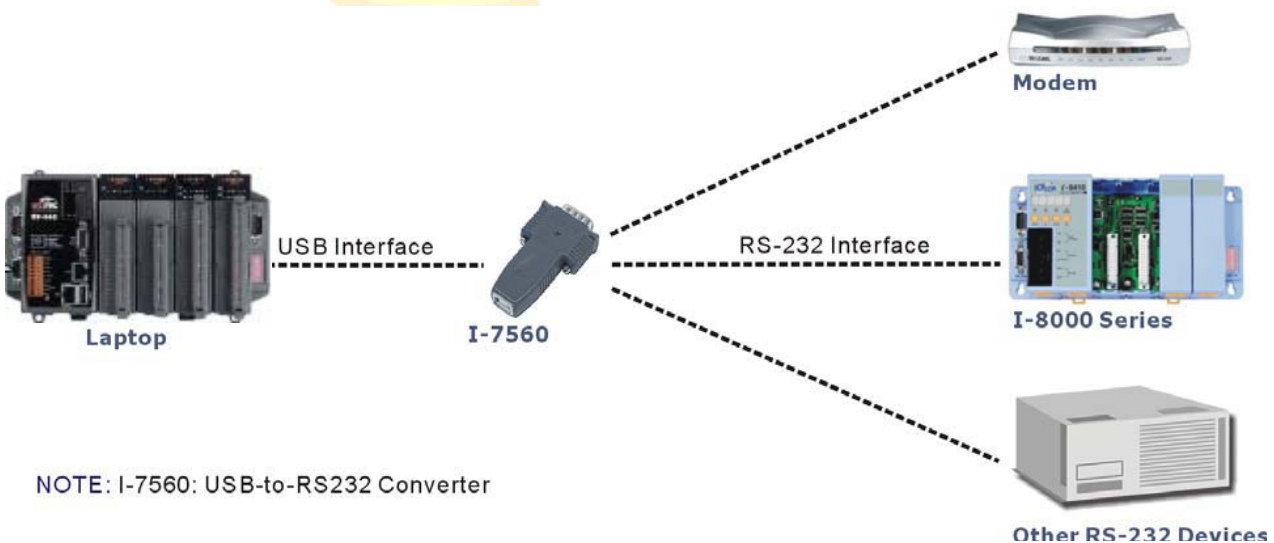
Platform	OS version	WinPAC/ViewPAC utility version
WP-8x3x	All versions	All versions
WP-8x4x	All versions	All versions
VP-25W1	All versions	All versions
VP-23W1	All versions	All versions

About I-7560:

I-7560 is a USB-RS232 converter, it features a full set of RS-232 modem data and control signals (TxD, RxD, RTS, CTS, DSR, DTR, DCD, RI, and GND) on its PC compatible DB9 male connector and also provides a high-speed 115.2 Kb/s transmission rate. No external power supply is required as I-7560 takes its power from the USB bus.

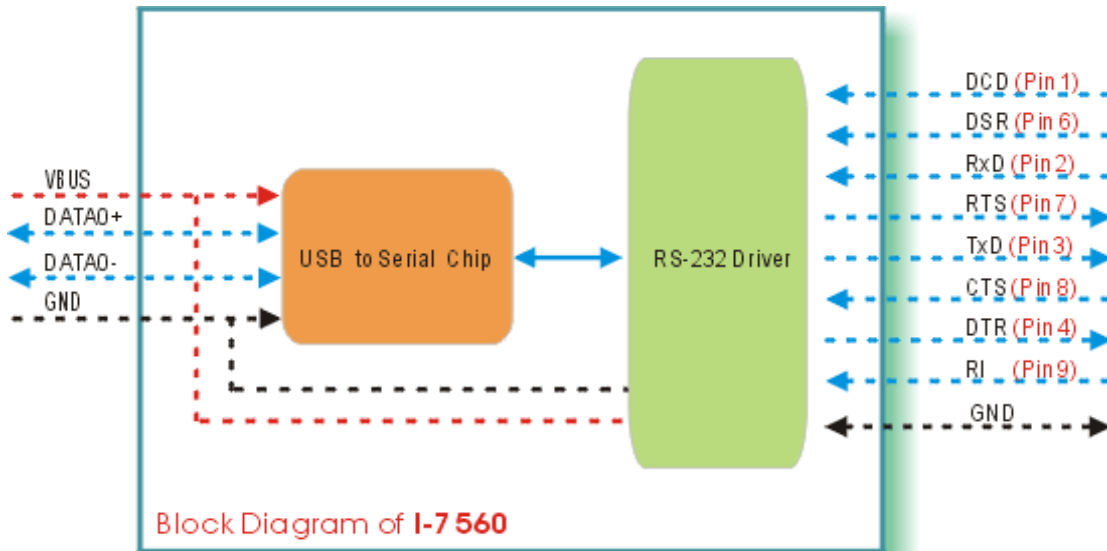


Application:



Classification	System and Application FAQ on WinCE PAC				No.	1-008-00	
Author	Tunglu-Yu	Version	1.0.0	Date	2010/2/12	Page	2/8

Block Diagram.

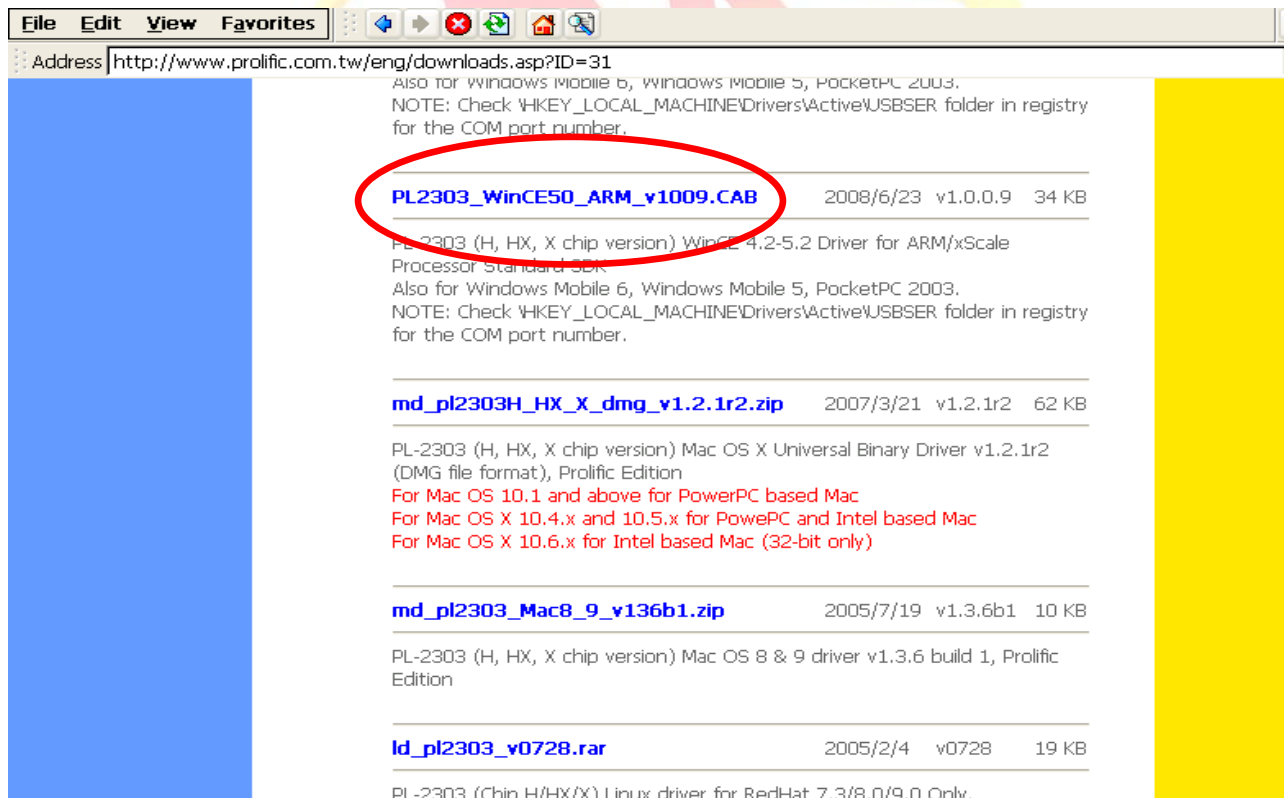


Block Diagram of I-7560

To set the I-7560

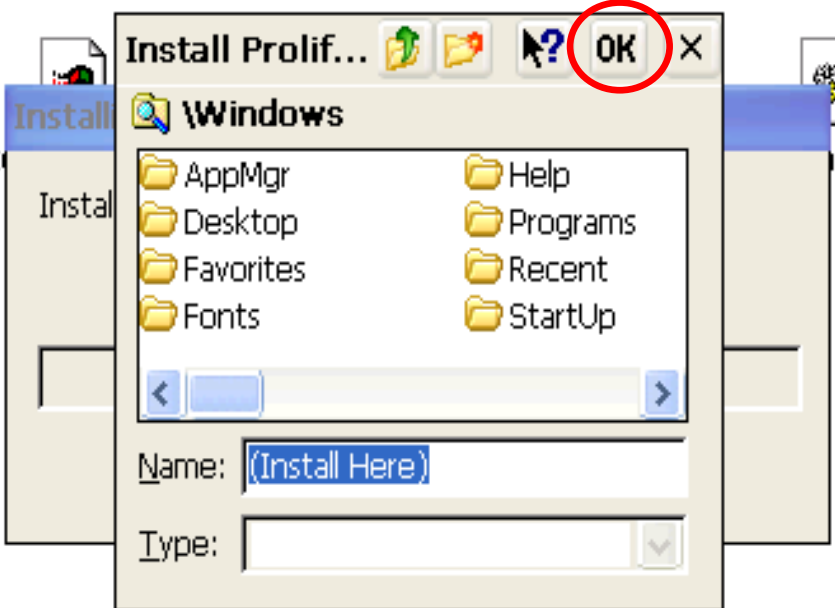
Step 1: Install the device driver.

1.1. Download the driver file "PL2303_WinCE50_ARM_v1009.CAB" from <http://www.prolific.com.tw/eng/downloads.asp?ID=31> to WinPAC/ViewPAC.

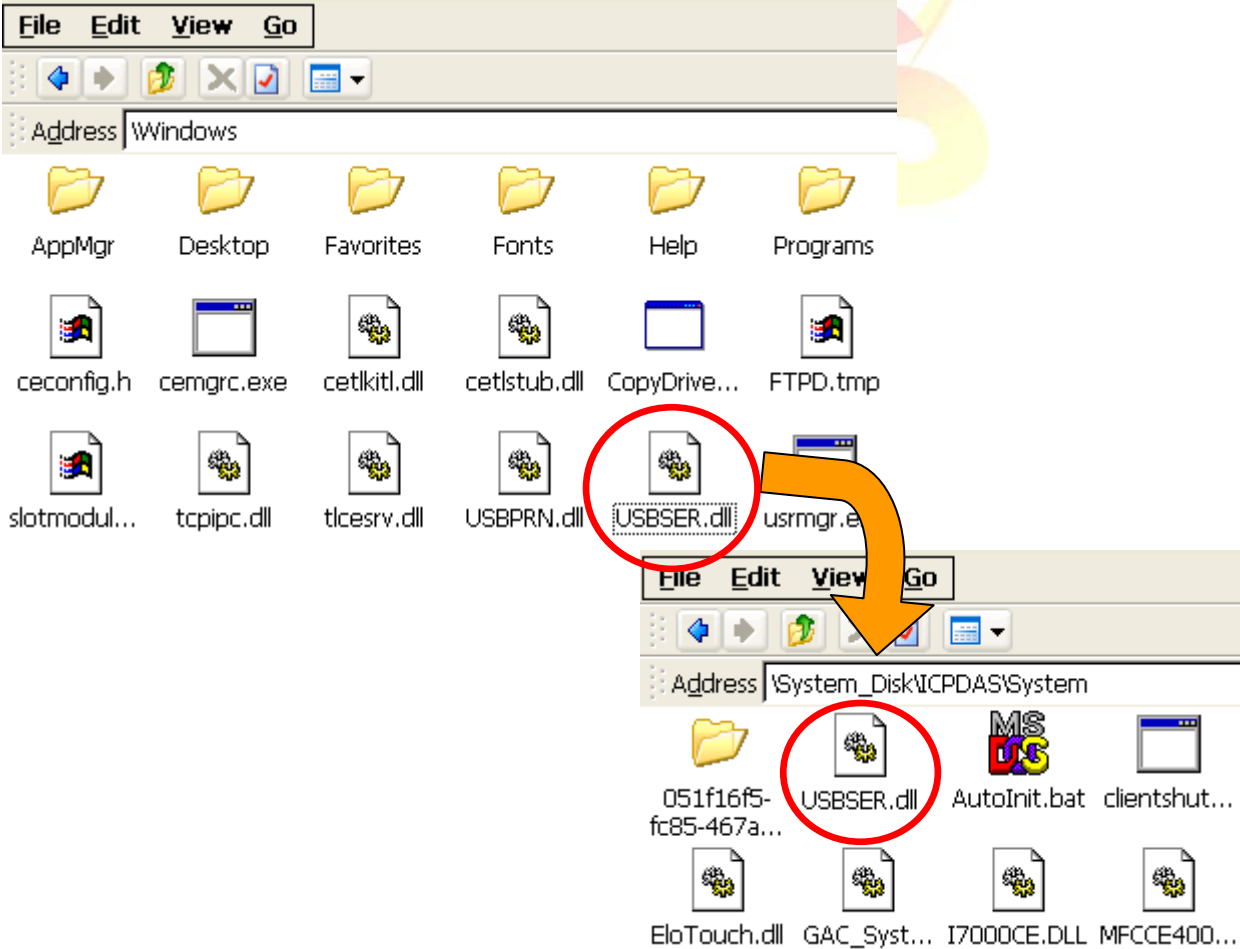


Classification	System and Application FAQ on WinCE PAC				No.	1-008-00	
Author	Tunglu-Yu	Version	1.0.0	Date	2010/2/12	Page	3/8

1.2. Double click the driver file “**PL2303_WinCE50_ARM_v1009.CAB**” and click “**OK**”.



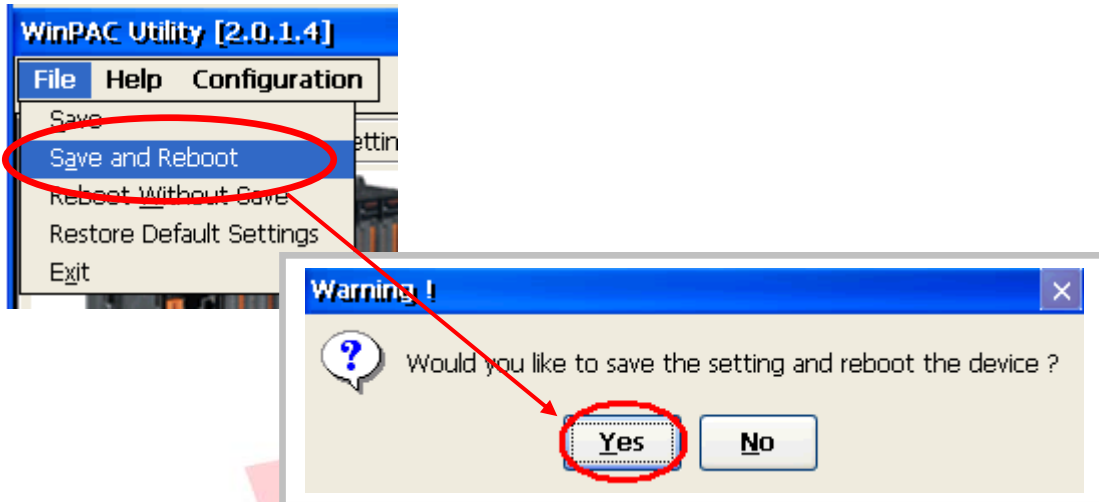
1.3. Copy the “**USBSER.dll**” from “\Windows” to “\System_Disk\ICPDAS\System”.



Classification	System and Application FAQ on WinCE PAC				No.	1-008-00	
Author	Tunglu-Yu	Version	1.0.0	Date	2010/2/12	Page	4/8

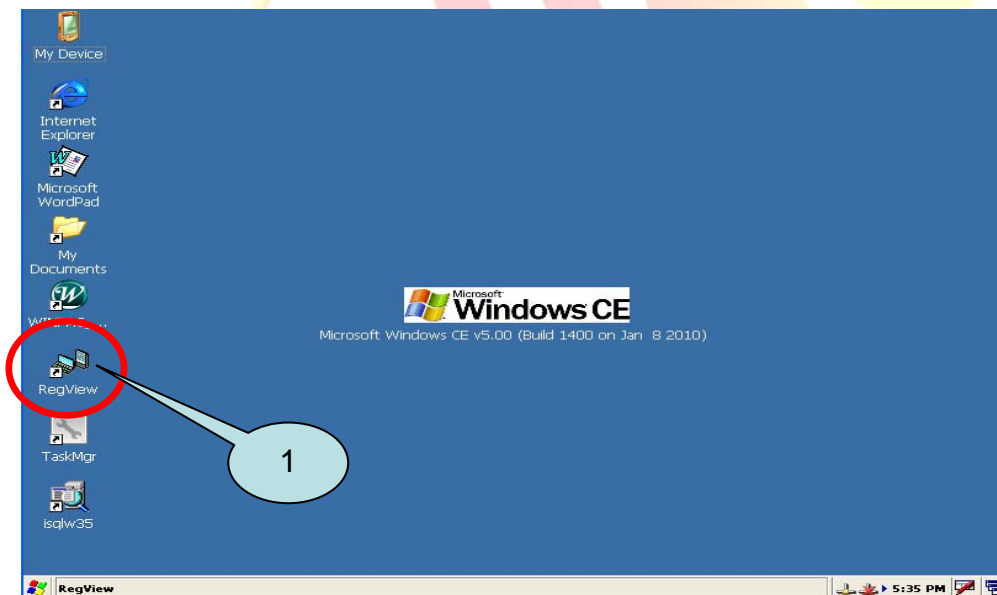
Step 2: Save and Reboot your WinPAC.

- 2.1. Start the Win PAC utility on the desktop and click **“File”** → **“Save and Reboot”**.
- 2.2. Click the **“Yes”** button and wait for the device to reboot.



Step 3: Get the COM port name and use it in your application.

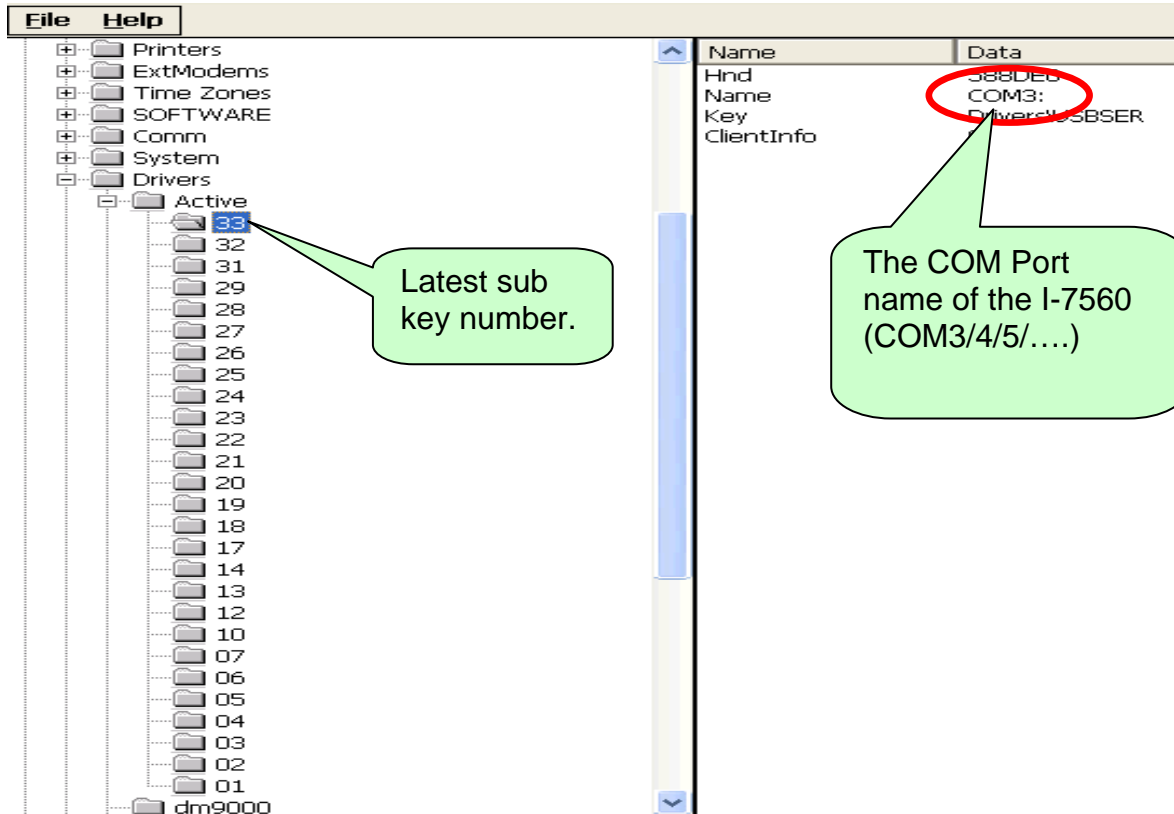
- 3.1. Double click the RegView icon on desktop.



Classification	System and Application FAQ on WinCE PAC				No.	1-008-00	
Author	Tunglu-Yu	Version	1.0.0	Date	2010/2/12	Page	5/8

3.2. Go to HKEY_LOCAL_MACHINE → Drivers → Active and click the Max number of sub key, the name is displayed in right hand window.

3.3. Fill the name in your program based on serial communication to control the device connected to I-7560.



Example of Connecting with PC

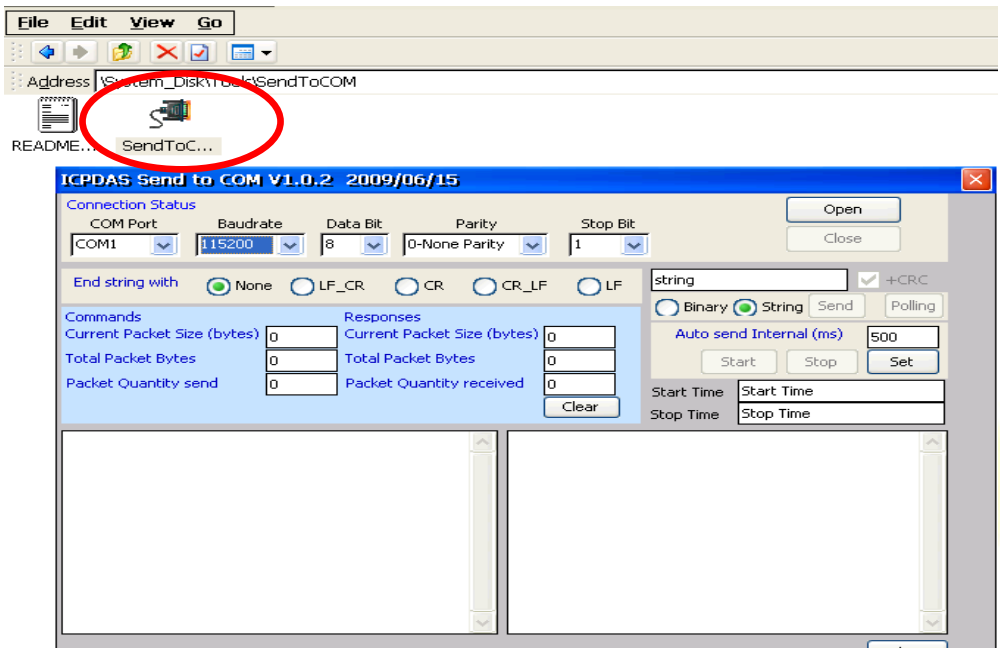
Step 1: Connect the USB port of your WinPAC with I-7560, and connect the RS-232 connector to your PC. The RS-232 connectors on both I-7560 and PC are DTE compatible, a null modem is needed to connect the I-7520 and PC.



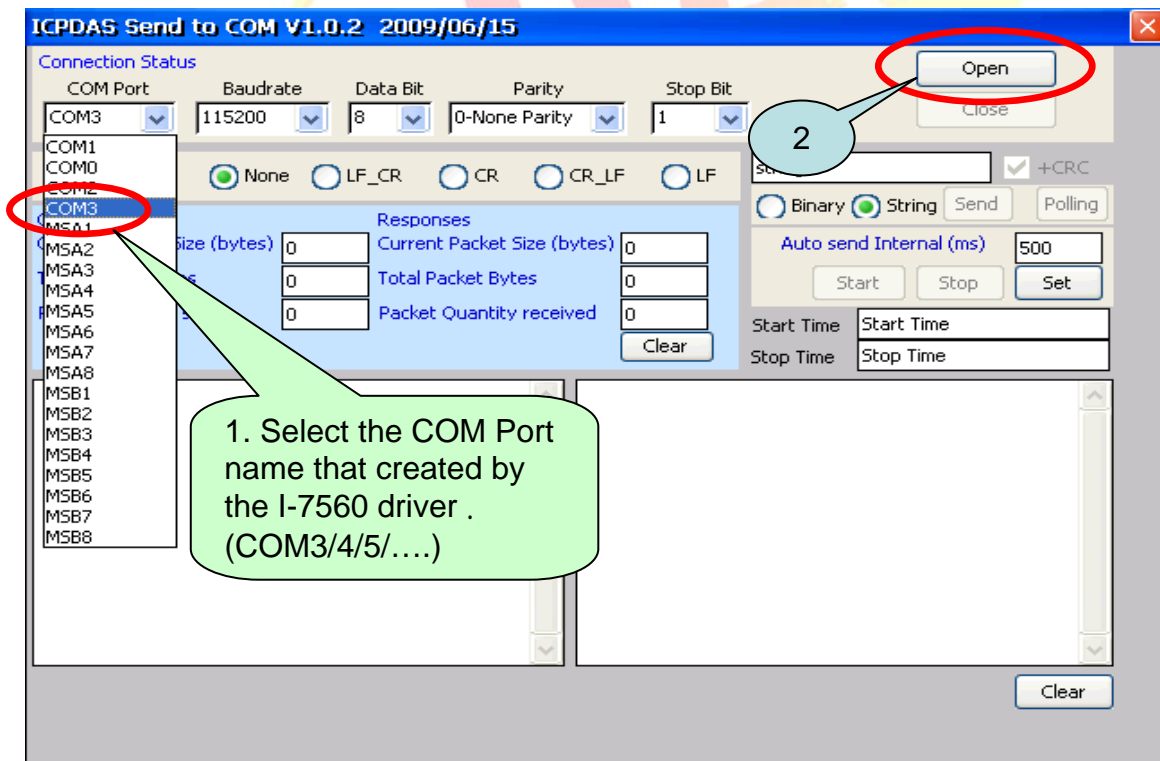
Classification	System and Application FAQ on WinCE PAC				No.	1-008-00	
Author	Tunglu-Yu	Version	1.0.0	Date	2010/2/12	Page	6/8

Step 2: Install the driver and get the COM port name.

Step 3: Execute **SendTOCOM.exe** on WinPAC/ViewPAC from the “\System_Disk\Tools\SendToCOM” folder.

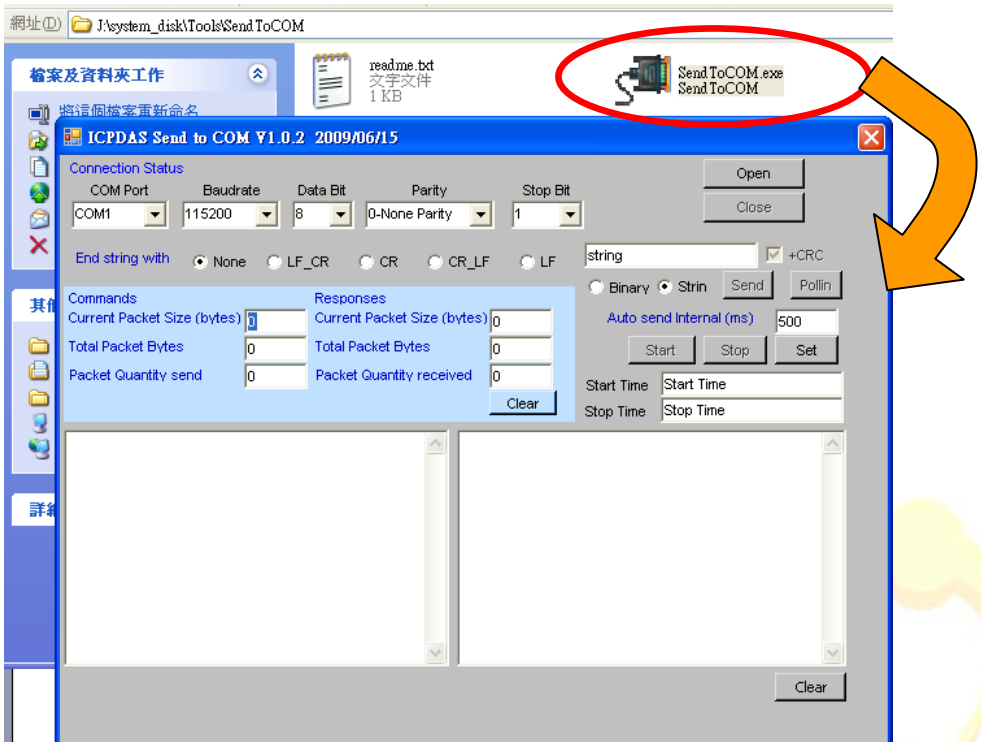


Step 4: Select the COM port number that the I-7560 driver created and press the “Open” button.

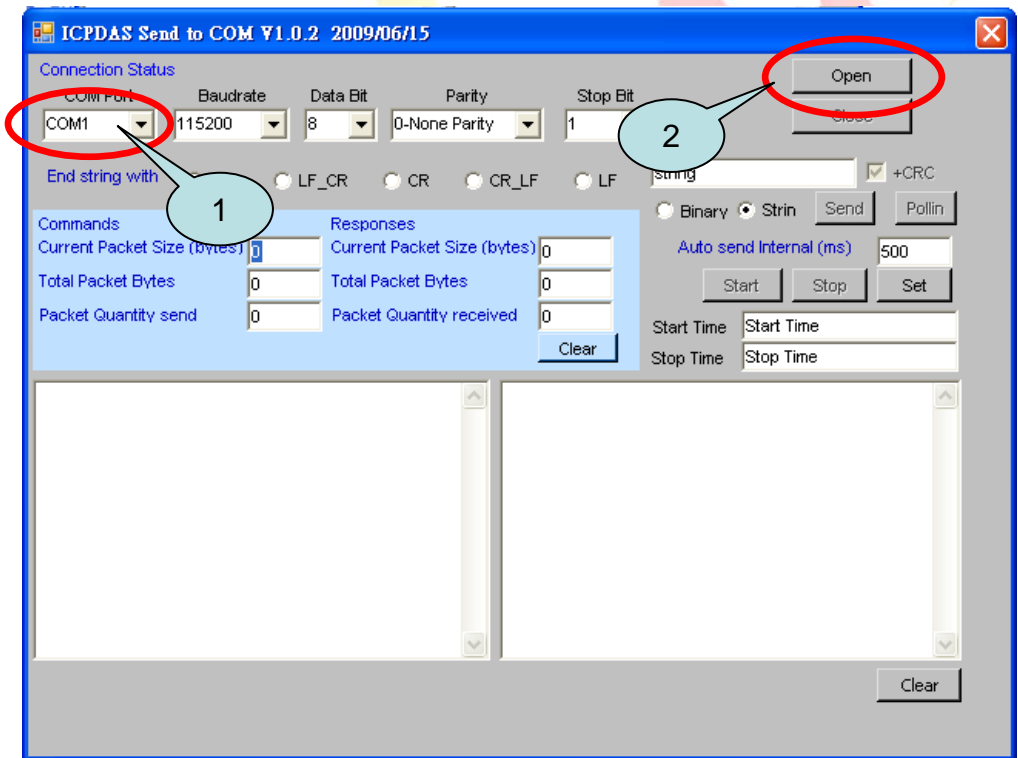


Classification	System and Application FAQ on WinCE PAC				No.	1-008-00	
Author	Tunglu-Yu	Version	1.0.0	Date	2010/2/12	Page	7/8

Step 5: Copy “SendToCOM.exe” to PC and run it.

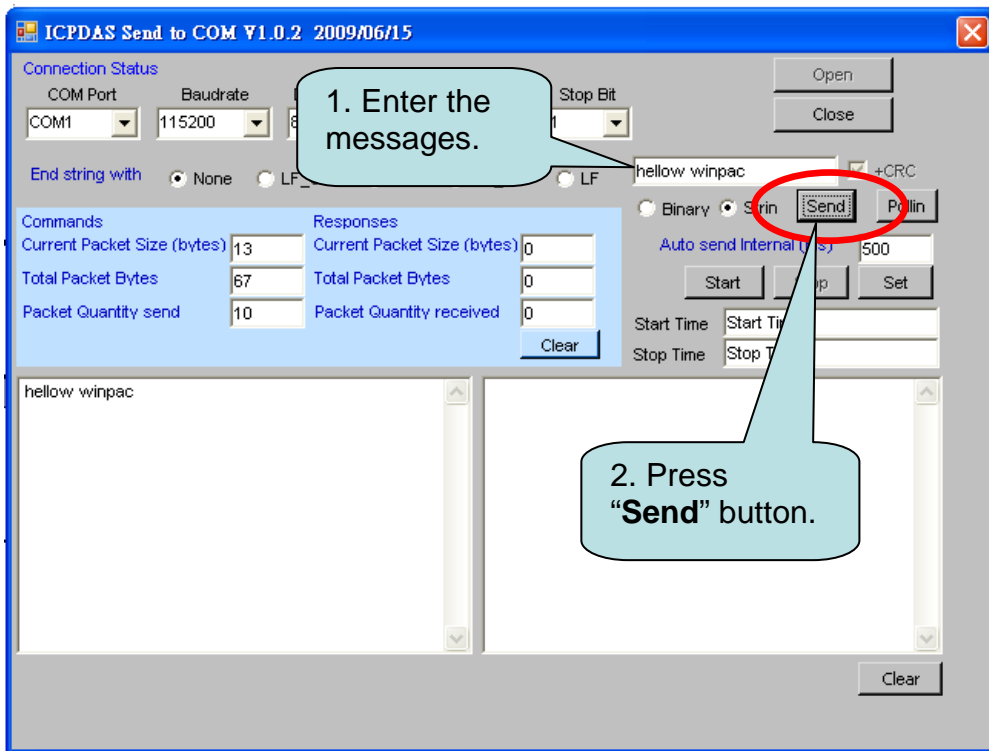


Step 6: Select the COM Port on the PC used to connect to I-7560 and click “Open”.



Classification	System and Application FAQ on WinCE PAC				No.	1-008-00	
Author	Tunglu-Yu	Version	1.0.0	Date	2010/2/12	Page	8/8

Step 7: Send message from PC to WinPAC.



Step 8: Check the message received on WinPAC.

