

Classification	System and Application FAQ on WinCE PAC				No.	1-005-07	
Author	Tunglu-Yu	Version	1.0.0	Date	2010/2/12	Page	1/4

How to calibrate a ViewPAC touch panel

Applies to:

Platform	OS version	WinPAC/ViewPAC utility version
WP-8x3x	N/A	N/A
WP-8x4x	N/A	N/A
VP-25W1	All versions	All versions
VP-23W1	N/A	N/A

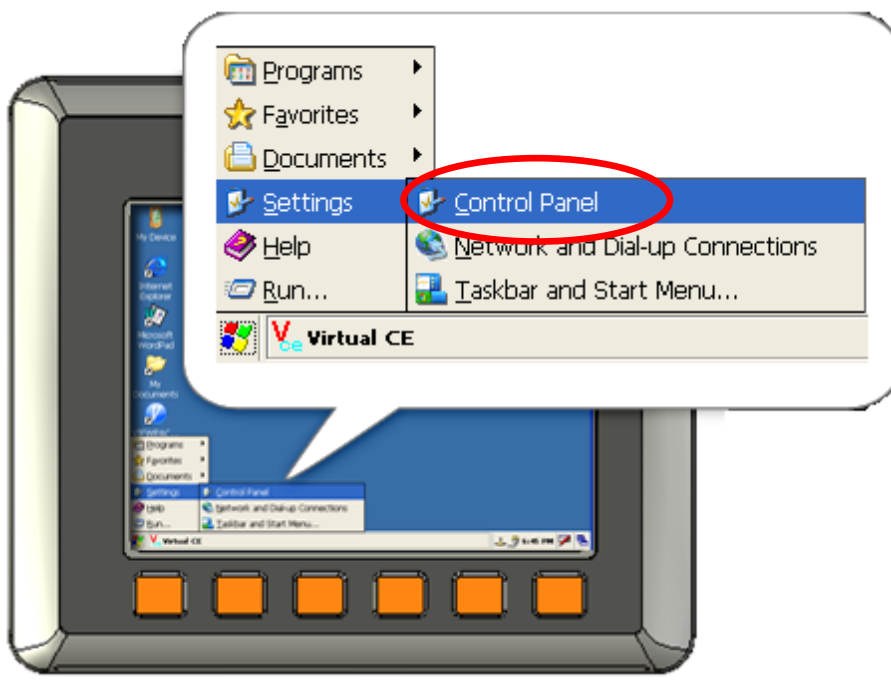
N/A: Not applicable to this platform and OS.

The ViewPAC touch panel works well with the factory default calibration. Sometimes it may be necessary to calibrate your screen to make it responsive.

To calibrate a ViewPAC touch panel, please perform the following steps:

Step 1: Run the Stylus in the Control Panel.

1.1. Open the Control Panel by clicking **Start** → **Settings** → **Control Panel**



Classification	System and Application FAQ on WinCE PAC				No.	1-005-07	
Author	Tunglu-Yu	Version	1.0.0	Date	2010/2/12	Page	2/4

1.2. Double click the Stylus icon.



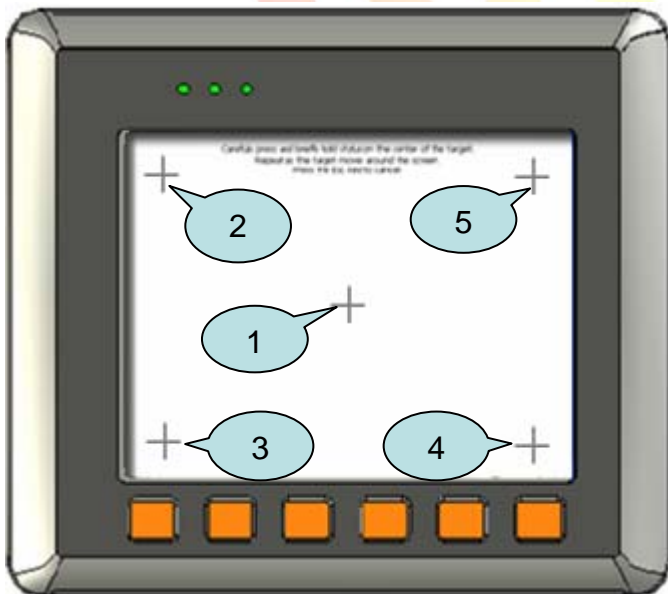
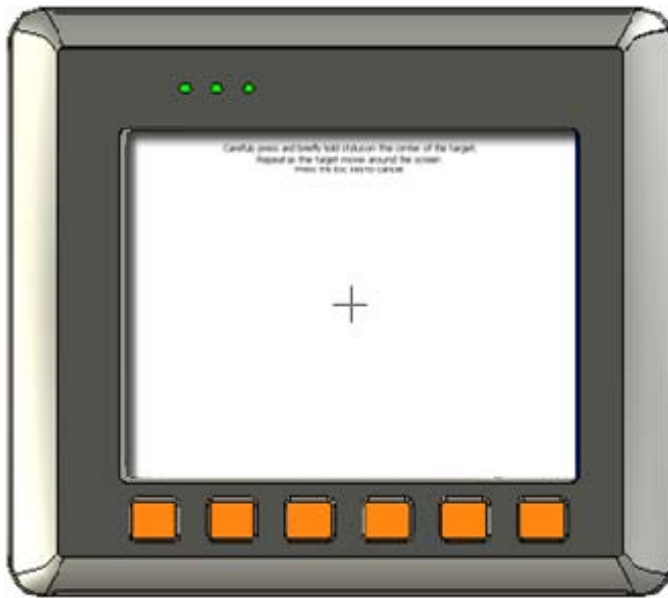
1.3. Select the “**Calibration**” tag and press the “**Recalibrate**” button



Classification	System and Application FAQ on WinCE PAC				No.	1-005-07	
Author	Tunglu-Yu	Version	1.0.0	Date	2010/2/12	Page	3/4

Step 2: Perform the calibration process.

2.1. Tap the touch pen in the exact center of each calibration markers (+).



Classification	System and Application FAQ on WinCE PAC				No.	1-005-07	
Author	Tunglu-Yu	Version	1.0.0	Date	2010/2/12	Page	4/4

Step 3: Save the settings and reboot the ViewPAC.

- 3.1. Run the ViewPAC Utility on the desktop then click **"File"** → **"Save and Reboot"**.
- 3.2. Click **"Yes"** and wait for the device to reboot.

