

Classification	System and Application FAQ on WinCE PAC				No.	1-005-05	
Author	Tunglu-Yu	Version	1.0.0	Date	2010/2/12	Page	1/3

# How to calibrate an ELO serial touch panel

Applied to:

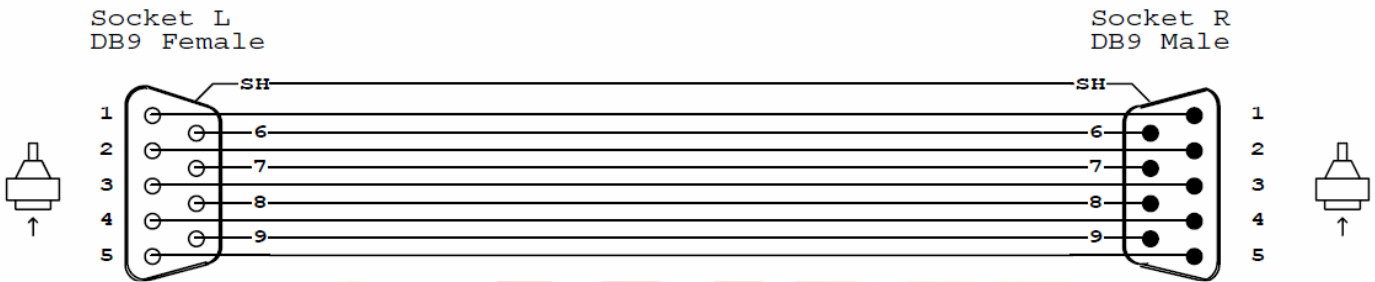
Platform	OS version	WinPAC/ViewPAC utility version
WP-8x3x	All versions	All versions
WP-8x4x	All versions	All versions
VP-25W1	N/A	N/A
VP-23W1	N/A	N/A

N/A: Not applicable to this platform and OS.

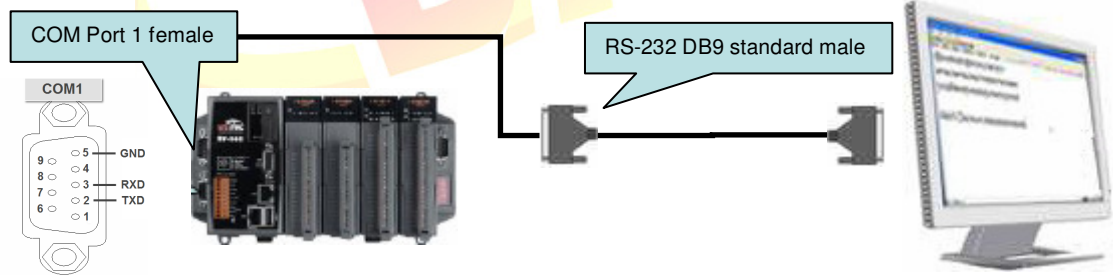
## Tips & Warnings

**!** Serial COM Ports 1 and 4 on WP-8000 are standard female/male RS-232 COM Ports. If COM3 is used to connect to the touch panel, you will need a "NULL MODEM".

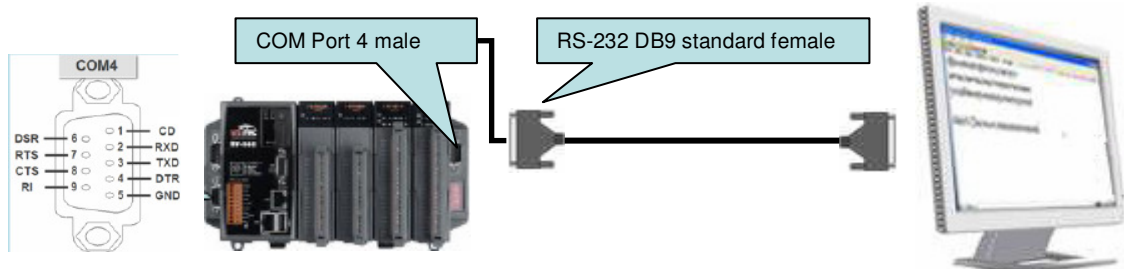
### Standard Wiring



### Connecting to COM1

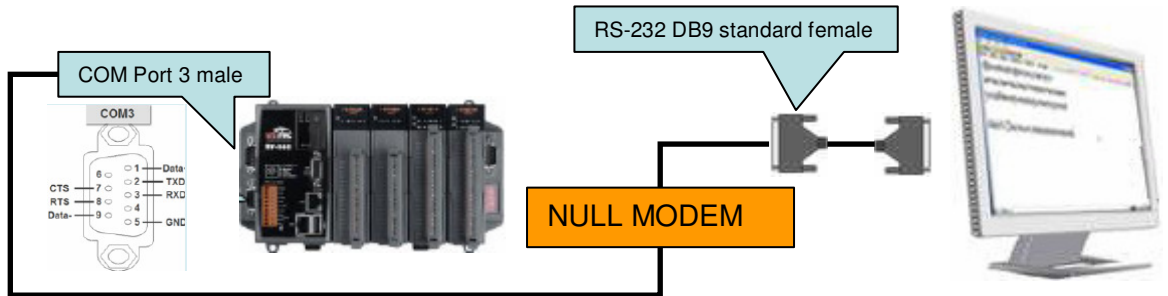


### Connecting to COM4



Classification	System and Application FAQ on WinCE PAC				No.	1-005-05	
Author	Tunglu-Yu	Version	1.0.0	Date	2010/2/12	Page	2/3

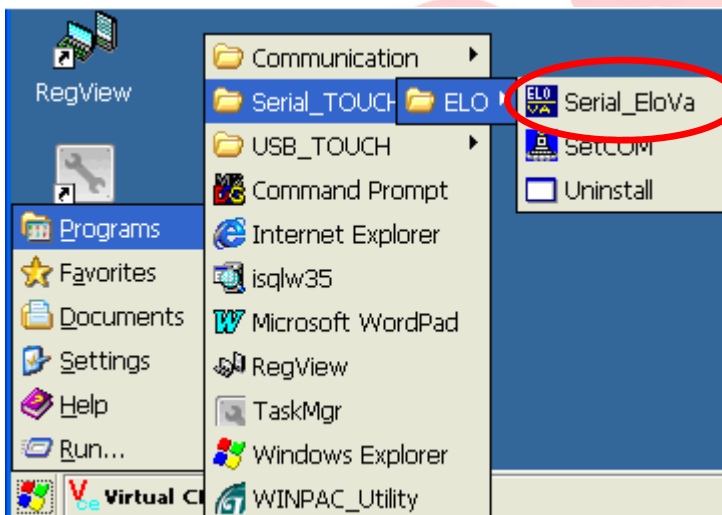
### Connecting to COM3



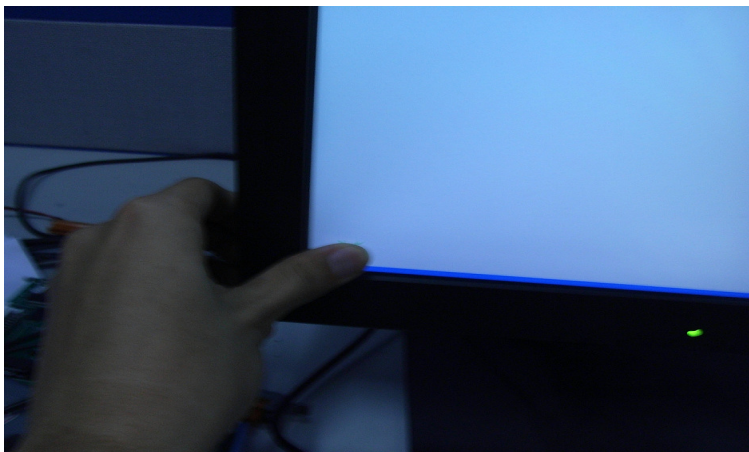
To calibrate an ELO serial touch panel, perform the following steps:

**Step 1:** Execute the calibration program.

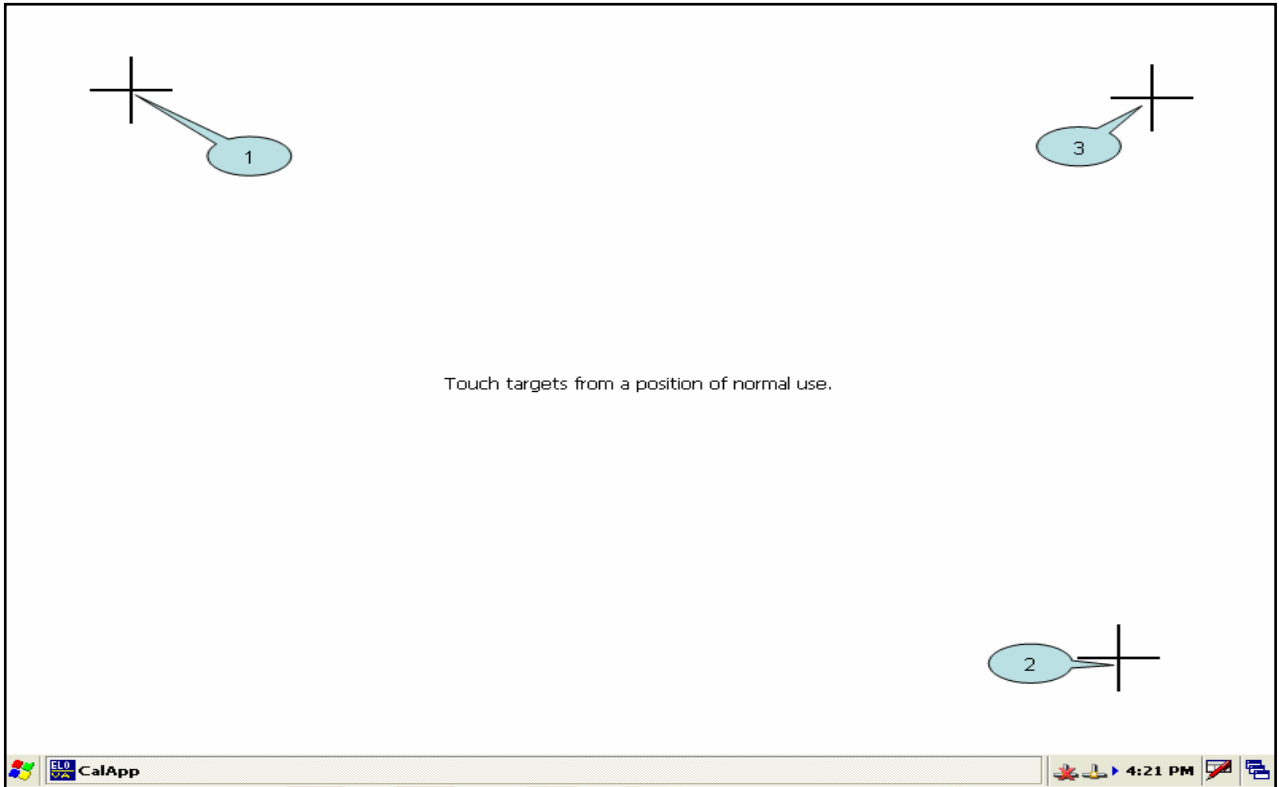
1.1. Click the Start → Programs → Serial\_TOUCH → ELO → Serial\_EloVa.



1.2. Touch the “+” icons on the monitor one by one to perform the calibration process.



Classification	System and Application FAQ on WinCE PAC				No.	1-005-05	
Author	Tunglu-Yu	Version	1.0.0	Date	2010/2/12	Page	3/3



**Step 2: Save and Reboot your WinPAC.**

- 2.1. Start the Win PAC utility on the desktop and click **"File"** → **"Save and Reboot"**.
- 2.2. Click the **"Yes"** button and wait for the device to reboot.

