

Classification	System and Application FAQ on WinCE PAC				No.	1-005-04	
Author	Tunglu-Yu	Version	1.0.0	Date	2010/2/12	Page	1/3

How to calibrate an Egalax serial touch panel

Applied to:

Platform	OS version	WinPAC/ViewPAC utility version
WP-8x3x	All versions	All versions
WP-8x4x	All versions	All versions
VP-25W1	N/A	N/A
VP-23W1	N/A	N/A

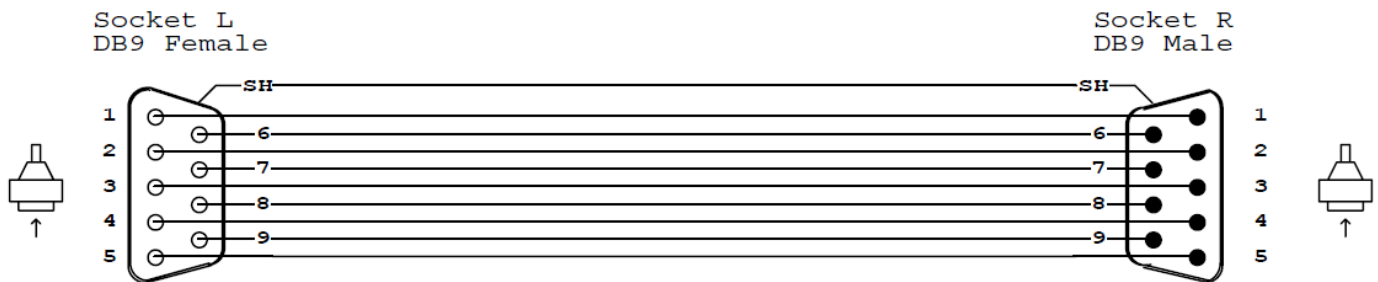
N/A: Not applicable to this platform and OS.

Tips & Warnings

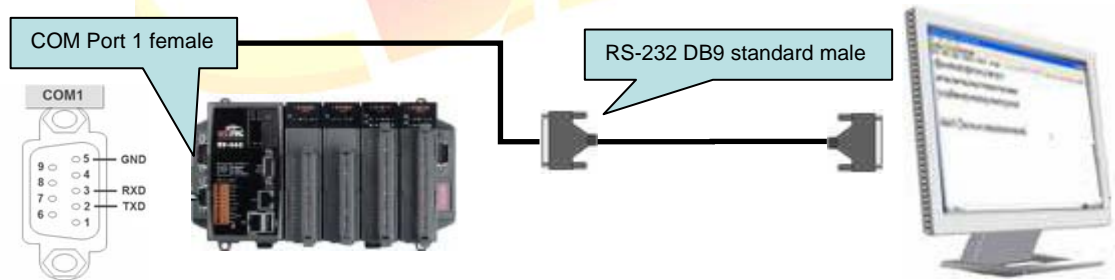


Serial COM Ports 1 and 4 on WP-8000 are standard female/male RS-232 COM Ports. If COM3 is used to connect to the touch panel, you will need a "NULL MODEM".

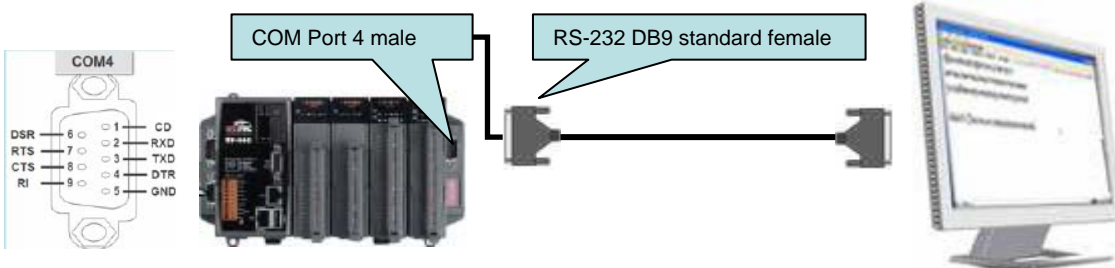
Standard Wiring



Connecting to COM1

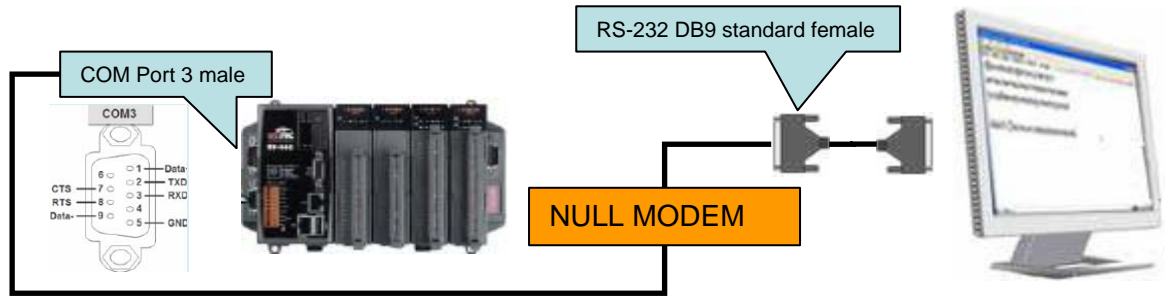


Connecting to COM4



Classification	System and Application FAQ on WinCE PAC				No.	1-005-04	
Author	Tunglu-Yu	Version	1.0.0	Date	2010/2/12	Page	2/3

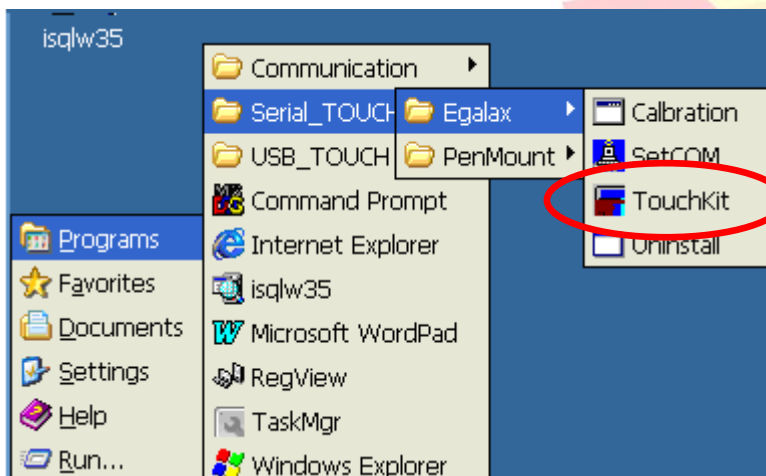
Connecting to COM3



To use an Egalax serial touch panel, please perform the following steps:

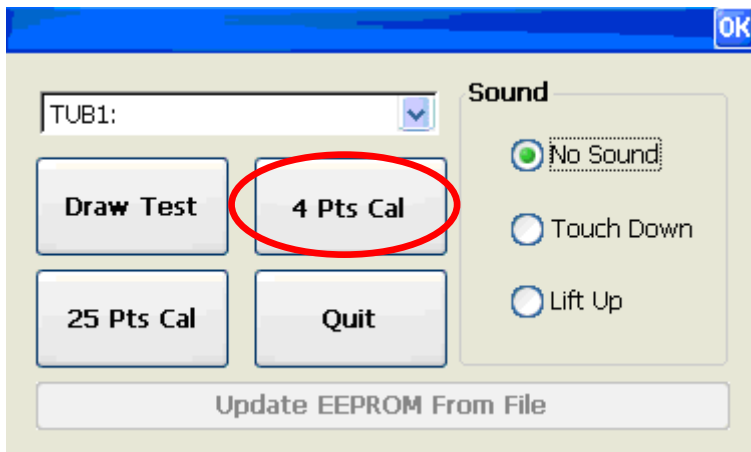
Step 1: Execute the calibration program.

1.1. Click Start → Programs → Serial_TOUCH → Egalax → TouchKit.



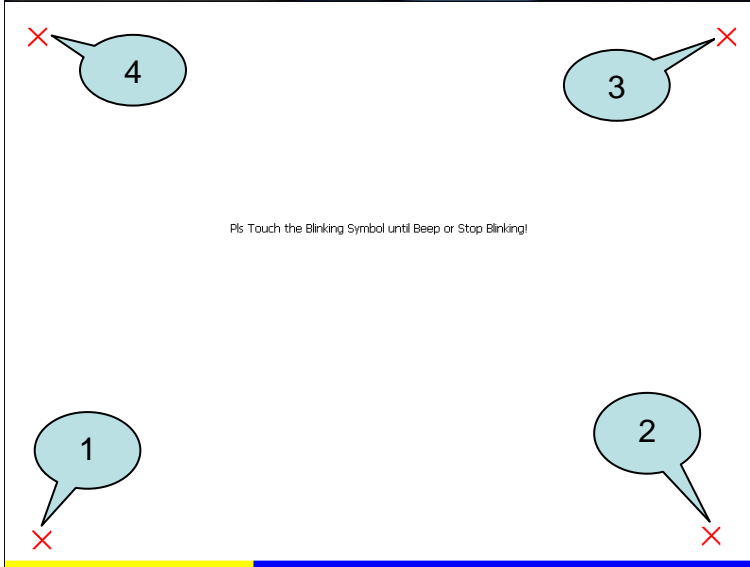
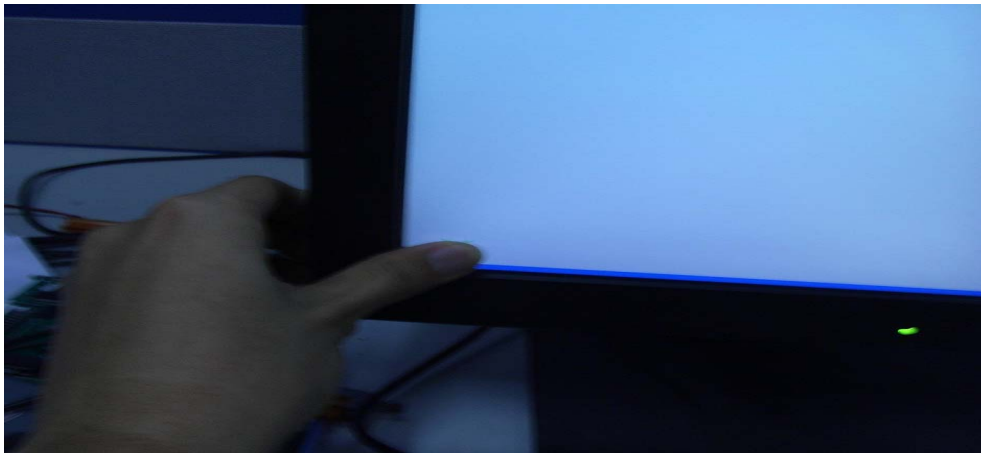
1.2. Click the “4 Pts Cal” button.

(Pressing the “25 Pts Cal” button would process more accurate calibration)



Classification	System and Application FAQ on WinCE PAC				No.	1-005-04	
Author	Tunglu-Yu	Version	1.0.0	Date	2010/2/12	Page	3/3

1.3. Touch the “X” icons on the monitor to perform the calibration process.



Step 2: Save the settings and reboot your WinPAC.

2.1. Start the WinPAC Utility on the desktop and then click “File” → “Save and Reboot”.

2.2. Click “Yes” button and wait for reboot.

