

Classification	System and Application FAQ on WinCE PAC				No.	1-005-02	
Author	Tunglu-Yu	Version	1.0.0	Date	2010/2/12	Page	1/3


How to calibrate an ELO USB touch panel

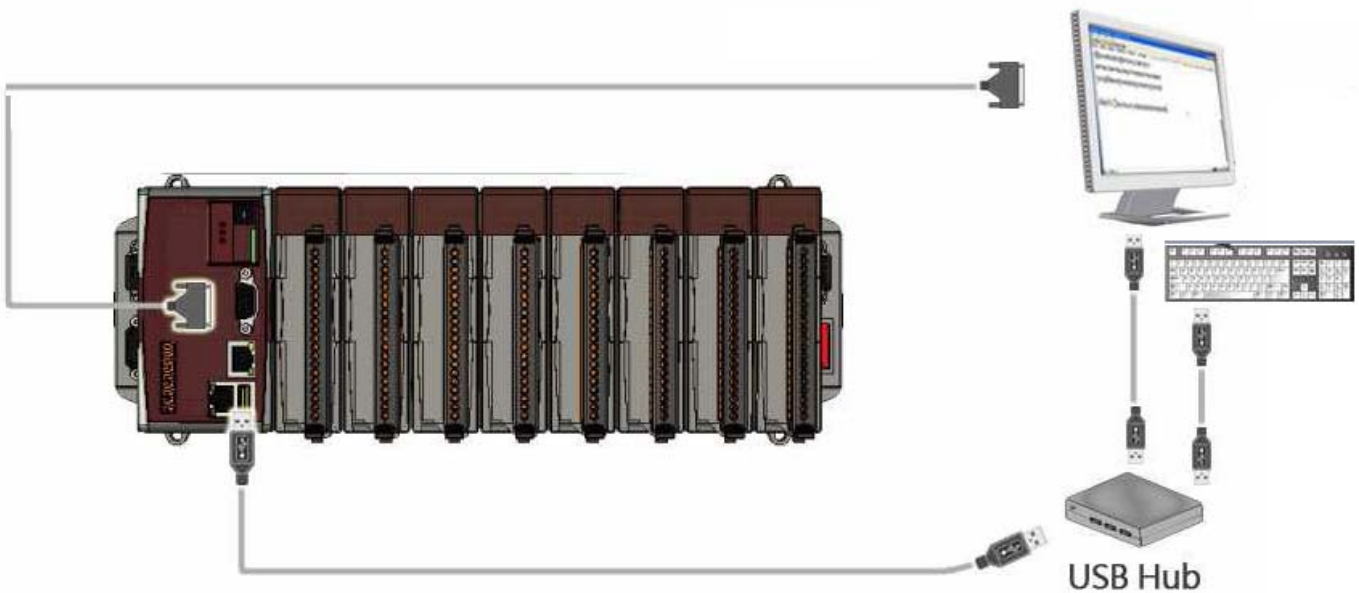
Applies to:

<i>Platform</i>	<i>OS version</i>	<i>WinPAC/ViewPAC utility version</i>
WP-8x3x	All versions	All versions
WP-8x4x	All versions	All versions
VP-25W1	N/A	N/A
VP-23W1	N/A	N/A

N/A: Not applicable to this platform and OS.

Tips & Warnings

 *To use a touch panel and a keyboard at the same time on WP-8x4x, you need a USB hub to expand the single USB port into several.*

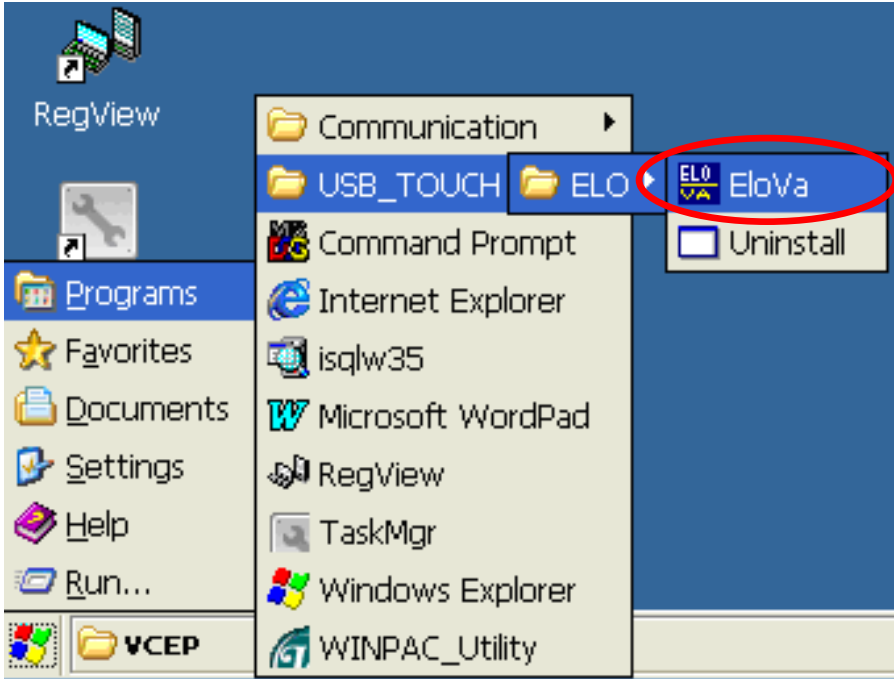


Classification	System and Application FAQ on WinCE PAC				No.	1-005-02	
Author	Tunglu-Yu	Version	1.0.0	Date	2010/2/12	Page	2/3

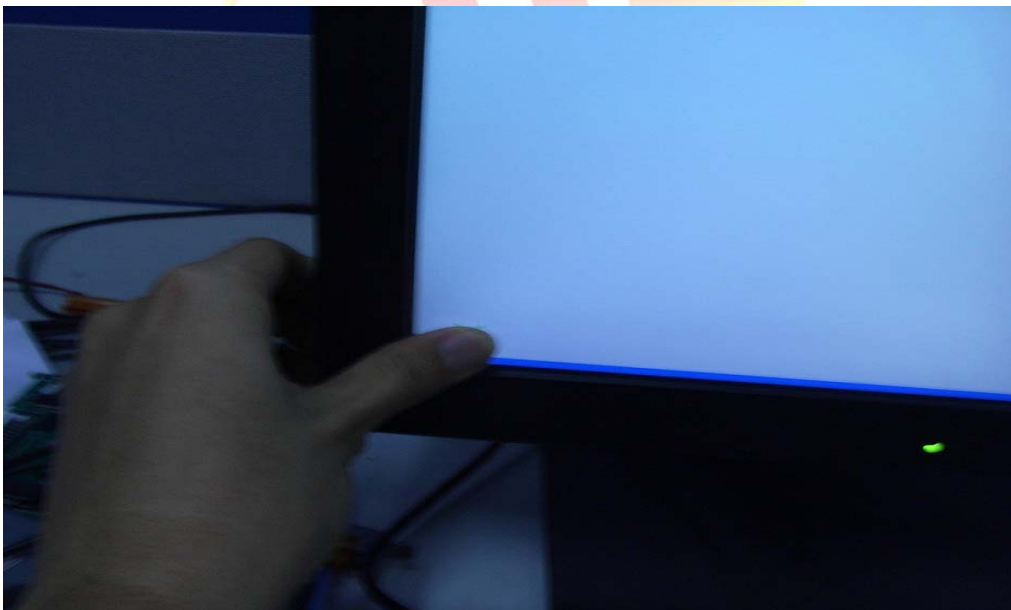
To calibrate an ELO USB touch panel, perform the following steps:

Step 1: Execute the calibration program.

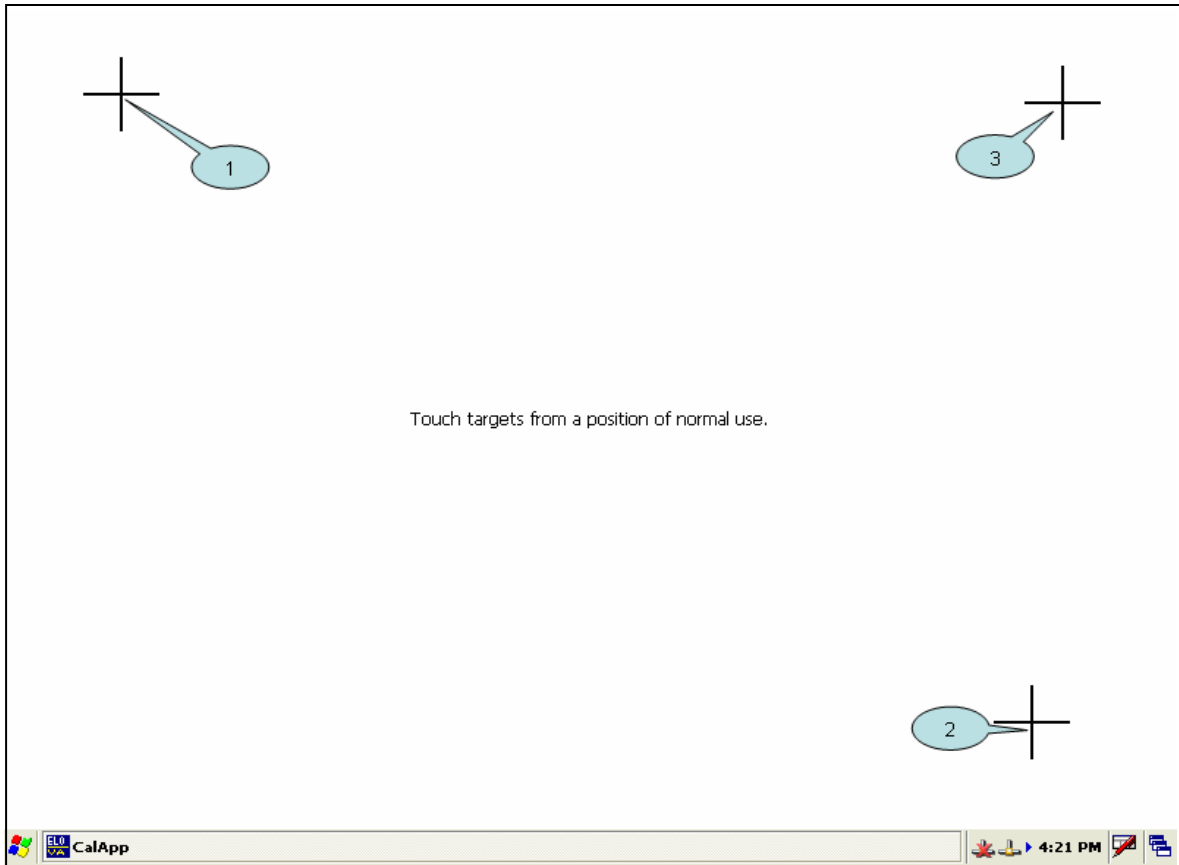
1.1. Click Start → Programs → USB_TOUCH → ELO → EloVa.



1.2. Touch the “+” icons on the monitor to perform the calibration process.



Classification	System and Application FAQ on WinCE PAC				No.	1-005-02	
Author	Tunglu-Yu	Version	1.0.0	Date	2010/2/12	Page	3/3



Step 2: Save and Reboot your WinPAC.

- 2.1. Start the Win PAC utility on the desktop and click the “File” → ”Save and Reboot”.
- 2.2. Click the “Yes” button and wait for the device to reboot.

