

Classification	System and Application FAQ on WinCE PAC				No.	1-005-01	
Author	Tunglu-Yu	Version	1.0.0	Date	2010/2/12	Page	1/3

How to calibrate an Egalax USB touch panel

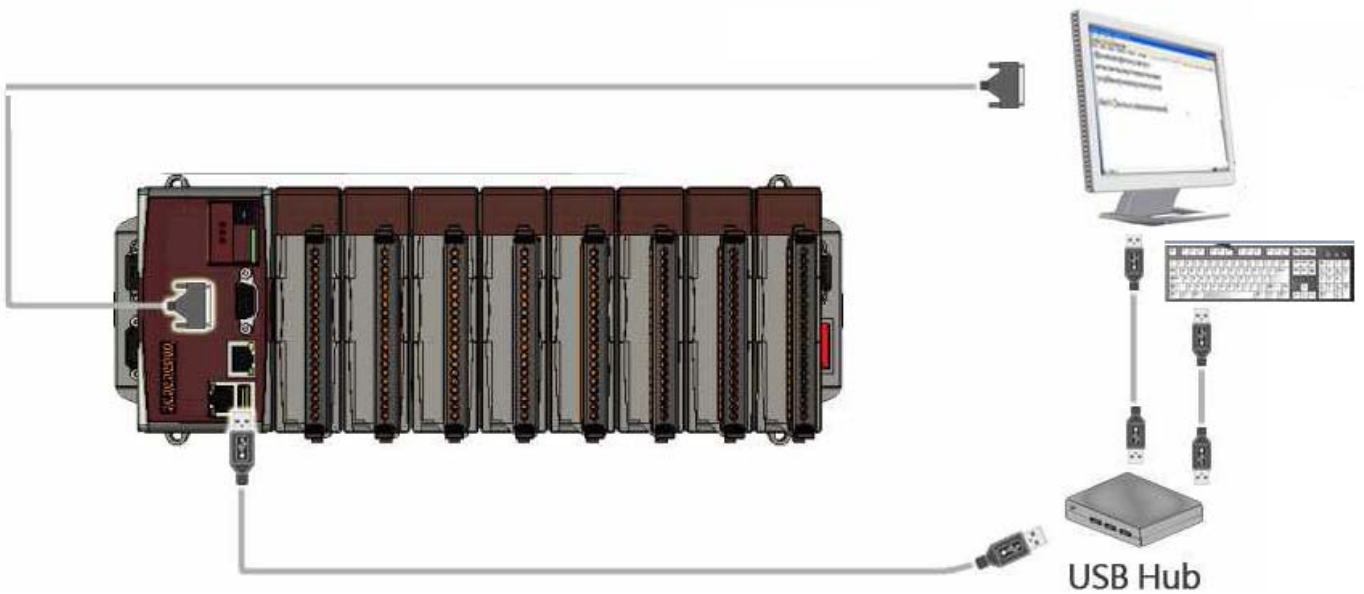
Applies to:

Platform	OS version	WinPAC/ViewPAC utility version
WP-8x3x	All versions	All versions
WP-8x4x	All versions	All versions
VP-25W1	N/A	N/A
VP-23W1	N/A	N/A

N/A: Not applicable to this platform and OS.

Tips & Warnings

 To use a touch panel and a keyboard at the same time on WP-8x4x, you need a USB hub to expand the single USB port into several.

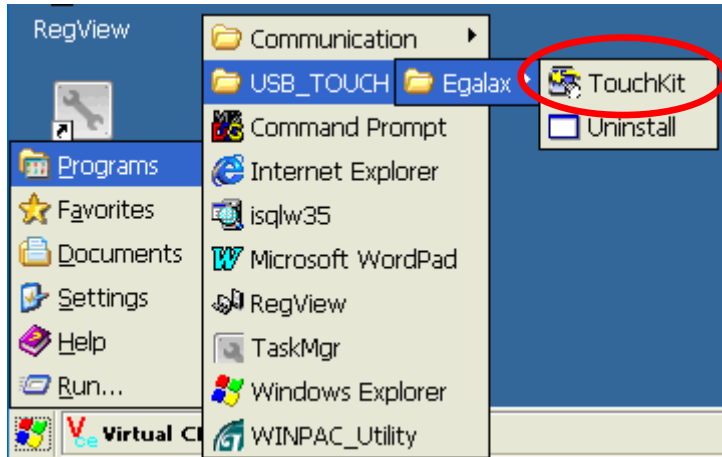


Classification	System and Application FAQ on WinCE PAC				No.	1-005-01	
Author	Tunglu-Yu	Version	1.0.0	Date	2010/2/12	Page	2/3

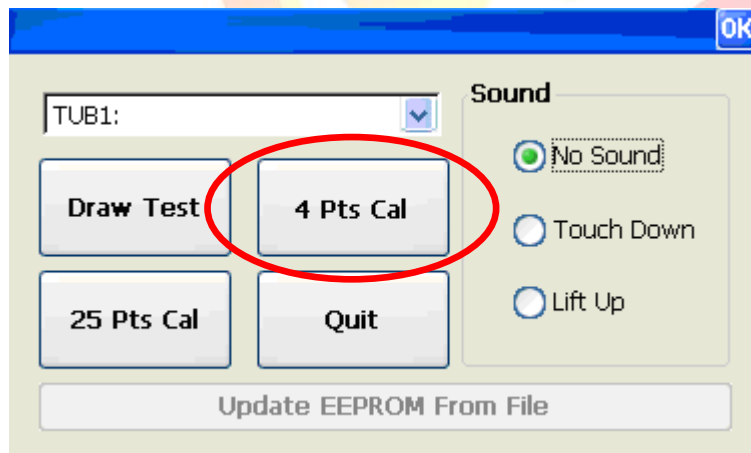
To calibrate an Egalax USB touch panel, perform the following steps:

Step 1: Execute the calibration program.

1.1. Click Start → Programs → USB_TOUCH → Egalax → TouchKit.

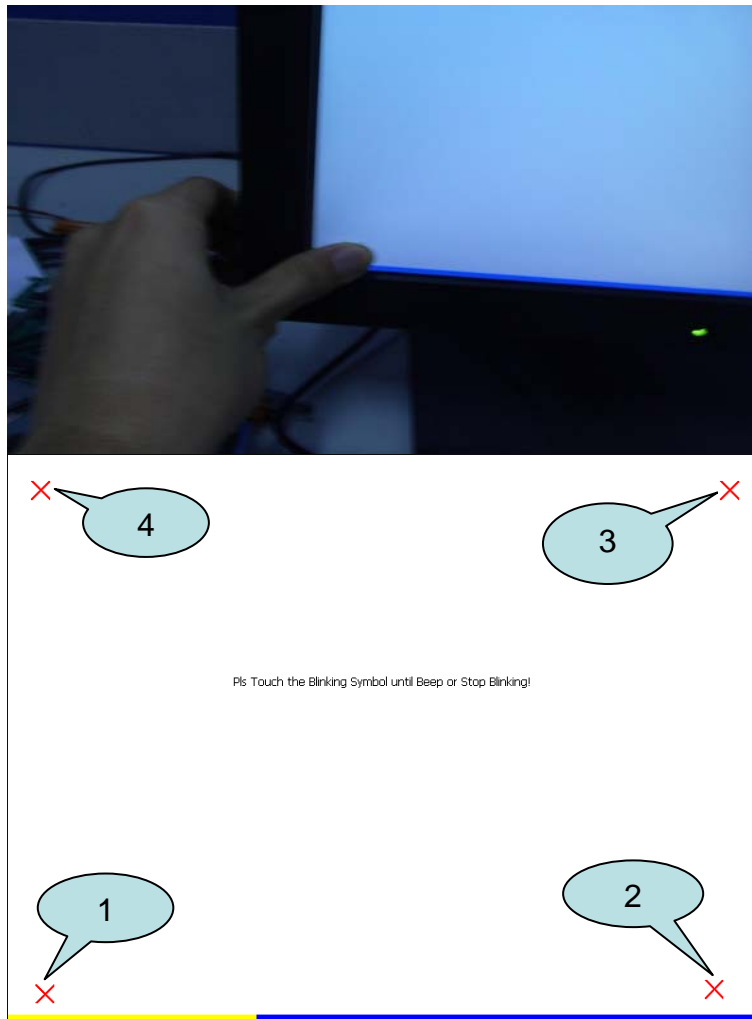


1.2. Click the “4 Pts Cal” button.
(Pressing “25 Pts Cal” button could process a more accurate calibration)



Classification	System and Application FAQ on WinCE PAC				No.	1-005-01	
Author	Tunglu-Yu	Version	1.0.0	Date	2010/2/12	Page	3/3

1.3. Touch the “X” icons on the monitor to perform the calibration process.



Step 2: Save and Reboot your WinPAC.

- 2.1. Start the Win PAC utility on the desktop and click the “File” → “Save and Reboot”.
- 2.2. Click the “Yes” button and wait for reboot.

