

Classification	System and Application FAQ on WinCE PAC				No.	1-004-03	
Author	Tunglu-Yu	Version	1.0.0	Date	2010/2/12	Page	1/4


How to set up a Penmount USB touch panel

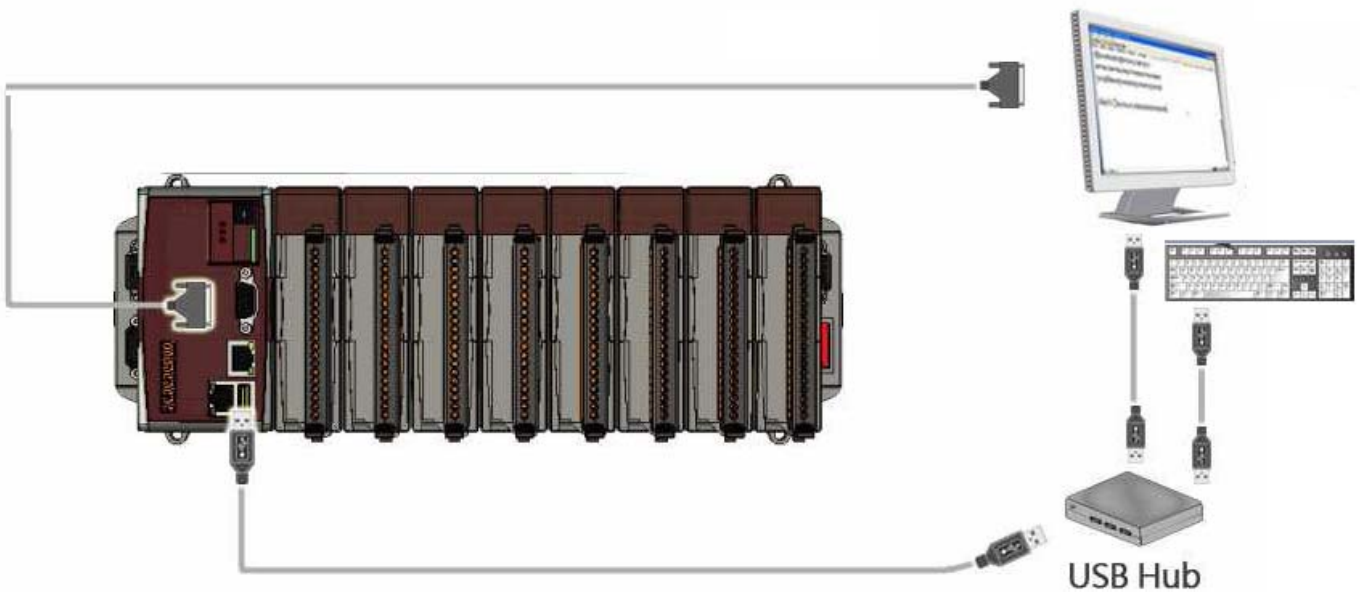
Applies to:

<i>Platform</i>	<i>OS version</i>	<i>WinPAC/ViewPAC utility version</i>
<i>WP-8x3x</i>	<i>All versions</i>	<i>All versions</i>
<i>WP-8x4x</i>	<i>All versions</i>	<i>All versions</i>
<i>VP-25W1</i>	<i>N/A</i>	<i>N/A</i>
<i>VP-23W1</i>	<i>N/A</i>	<i>N/A</i>

N/A: Not applicable to this platform and OS.

Tips & Warnings

 *To use a touch panel and a keyboard at the same time on WP-8x4x, you need a USB hub to expand the single USB port of WP-8x4x into several.*



Classification	System and Application FAQ on WinCE PAC				No.	1-004-03	
Author	Tunglu-Yu	Version	1.0.0	Date	2010/2/12	Page	2/4

To use a Penmount USB touch panel, perform the following steps:

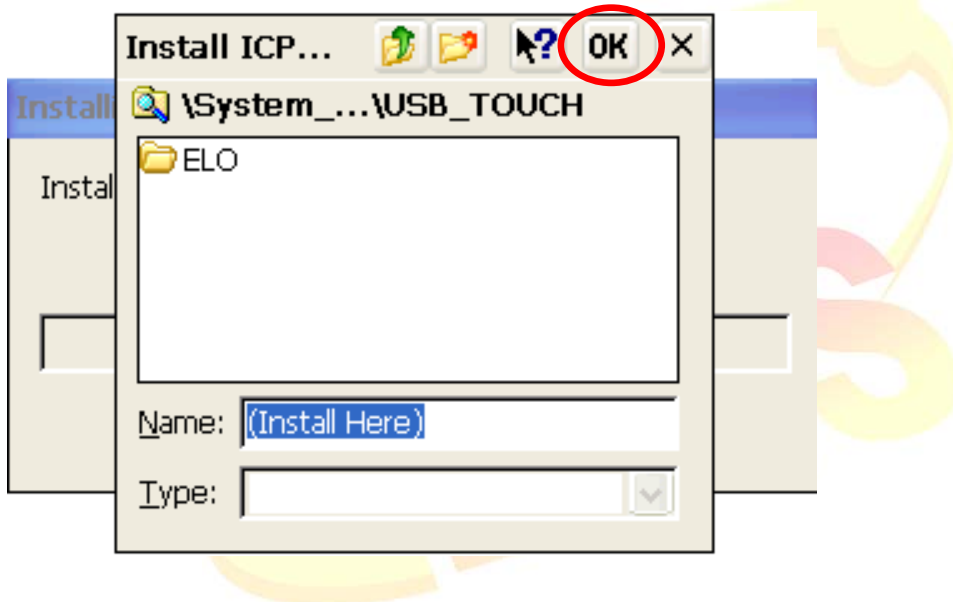
Step 1: Locate the driver.

The **penmount_usb_touch_v20091001.cab** is located at

1. **WinPAC file path:** \ System_Disk\ External_device_driver\
2. CD: \napdos\wp-8x4x_ce50\System_Disk\External_device_driver\
3. ftp://ftp.icpdas.com/pub/cd/winpac/napdos/wp-8x4x_ce50/system_disk/external_device_driver/

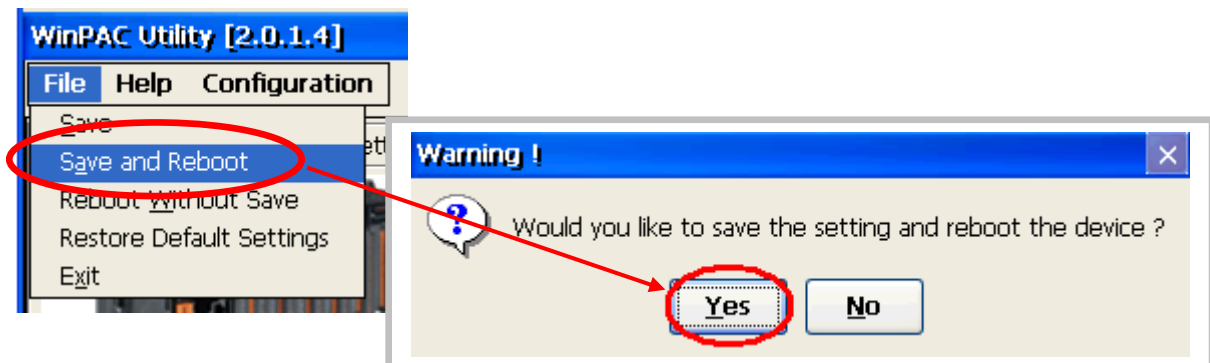
Step 2: Install the driver.

- 2.1. Double click the **penmount_usb_touch_v20091001.cab** file, and then click **“OK”**.



Step 3: Save and Reboot your WinPAC.

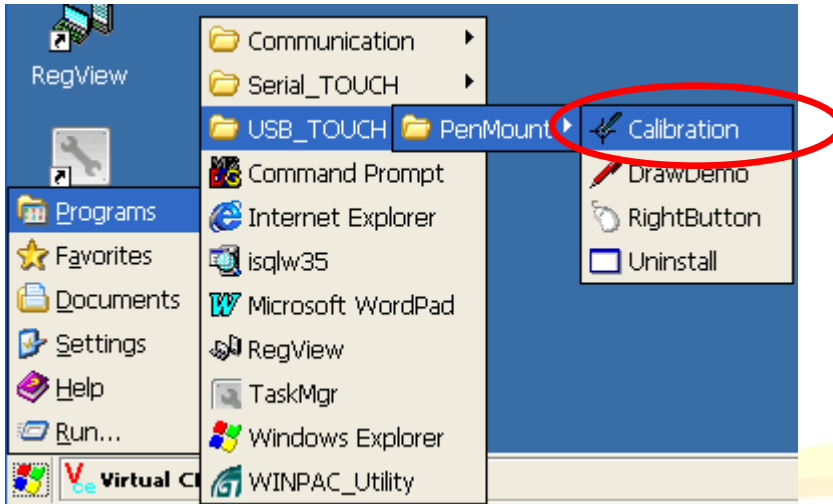
- 3.1. Start the Win PAC utility on the desktop and click the **“File”** → **“Save and Reboot”**.
- 3.2. Click the **“Yes”** button and wait for reboot.



Classification	System and Application FAQ on WinCE PAC				No.	1-004-03	
Author	Tunglu-Yu	Version	1.0.0	Date	2010/2/12	Page	3/4

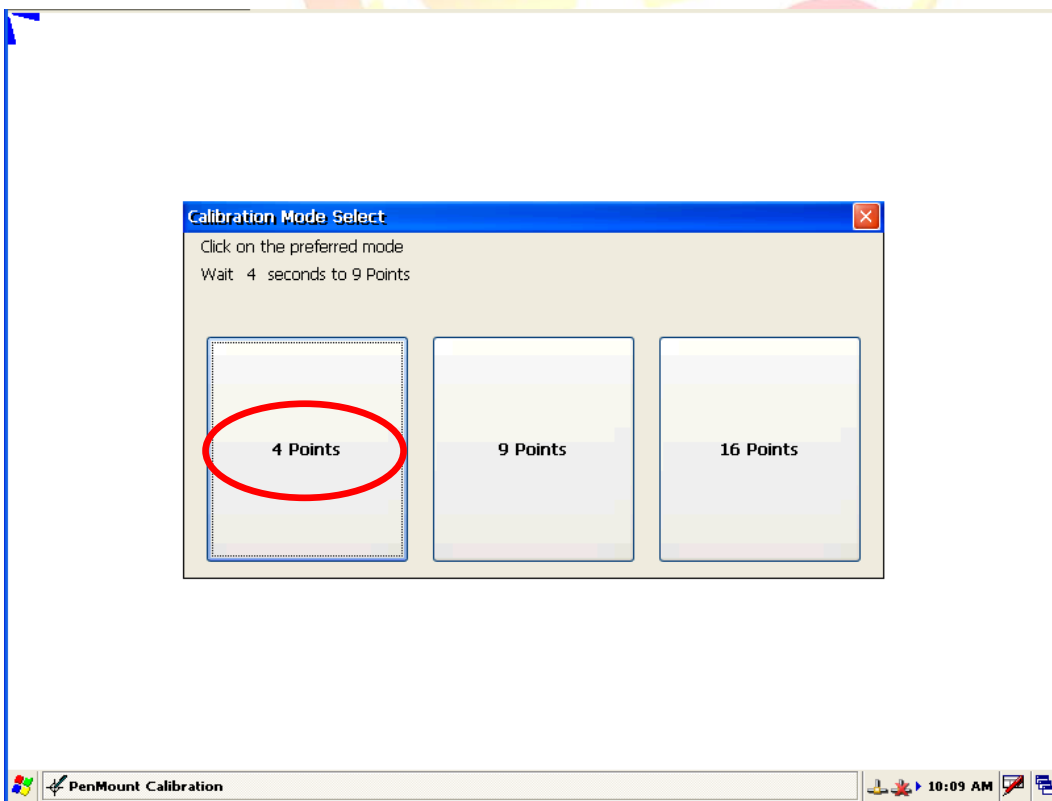
Step 4: Calibrate the touch panel.

4.1. After rebooting, click the Start → USB_TOUCH → PenMount → Calibration.




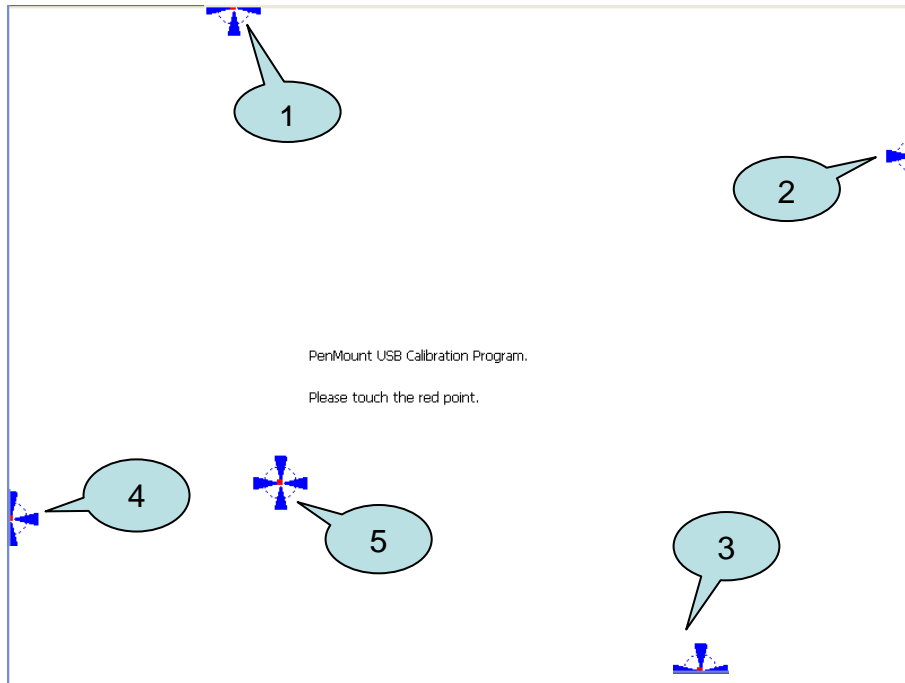
4.2. Click the “4 Points” button.

(Pressing “9 Points” or “16 Points” button could process a more accurate calibration)



Classification	System and Application FAQ on WinCE PAC				No.	1-004-03	
Author	Tunglu-Yu	Version	1.0.0	Date	2010/2/12	Page	4/4

4.3. Touch the “” icons on the monitor one by one to perform the calibration process.



Step 5: Save the settings.

5.1. Start the Win PAC utility and lick the “**File**”→”**Save and Reboot**” menu option.

5.2. Click the “**Yes**” button and wait for the device to reboot.

