

Classification	System and Application FAQ on WinCE PAC				No.	5-002-00	
Author	Tunglu-Yu	Version	1.0.0	Date	2010/4/22	Page	1/6

## How to debug Visual Studio 2005/2008 programs online through TCP/IP

*Applies to:*

<i>Platform</i>	<i>OS version</i>	<i>WinPAC/ViewPAC utility version</i>
<i>WP-8x3x</i>	<i>All versions</i>	<i>All versions</i>
<i>WP-8x4x</i>	<i>V1.3.0.4 or later</i>	<i>All versions</i>
<i>VP-25W1</i>	<i>All versions</i>	<i>All versions</i>
<i>VP-23W1</i>	<i>All versions</i>	<i>All versions</i>

To debug WinPAC programs in Visual Studio 2005/2008 online, perform the following steps:

### Tips & Warnings



You must install the WinPAC SDK before you can develop any EVC programs. The WinPAC SDK is a Software Development Kit (SDK) that contains C header files, C libraries and other documents. Below is the step-by-step procedure for installing the WinPAC SDKs.

Step 1: Insert the CD into your CD-ROM drive

Step 2: Execute the "PAC270\_SDK\_YYYYMMDD.msi" which is located in  
CD:\Napdos\wp-8x4x\_ce50\SDK\

Step 3: Follow the prompts until the installation is complete

**Step 1: Make sure** the following files are listed together with the matching version numbers.

Path	File
C:\Program Files\Common Files\Microsoft Shared\CoreCon\1.0\Bin	1. ActiveSyncBootstrap.dll 2. ConMan2.dll 3. ConManPS.dll 4. DesktopDMA.dll 5. eDbgTL.dll 6. TcpConnectionC.dll
C:\Program Files\Common Files\Microsoft Shared\CoreCon\1.0\Bin\1033	conmanui.dll
C:\Program Files\Common Files\Microsoft Shared\CoreCon\1.0\Target\wce400\armv4i	1. DeviceDMA.dll 2. eDbgTL.dll 3. TcpConnectionA.dll 4. clientshutdown.exe 5. CMAccept.exe 6. ConmanClient2.exe

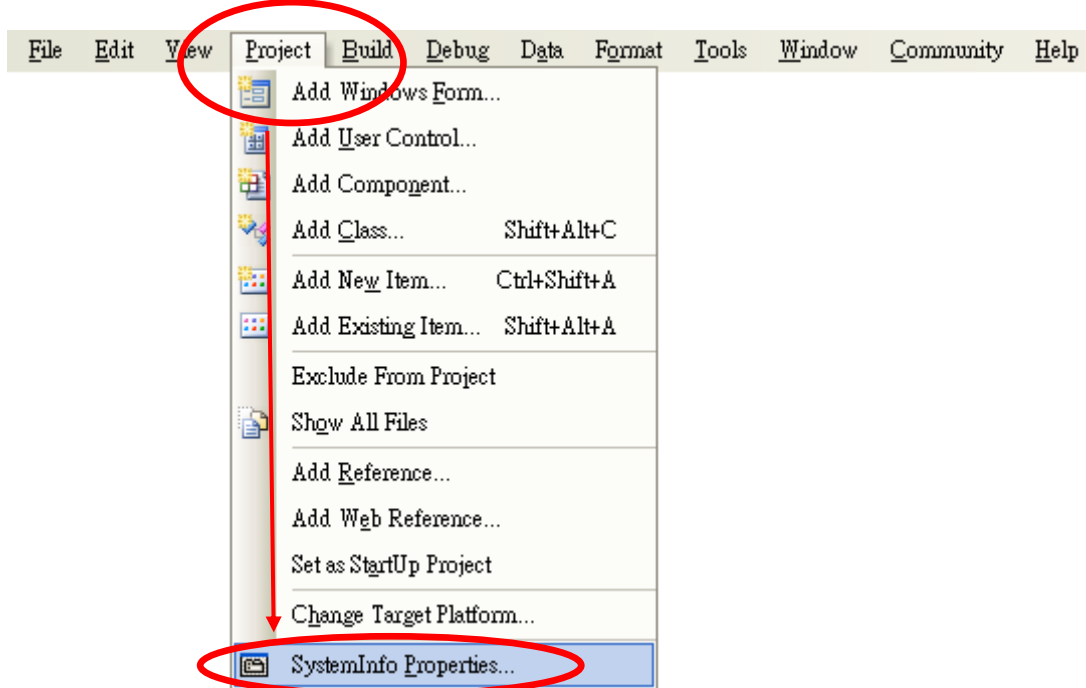
**Step 2:** If the version number matches correctly and all the files are there, copy the following files to

Classification	System and Application FAQ on WinCE PAC				No.	5-002-00	
Author	Tunglu-Yu	Version	1.0.0	Date	2010/4/22	Page	2/6

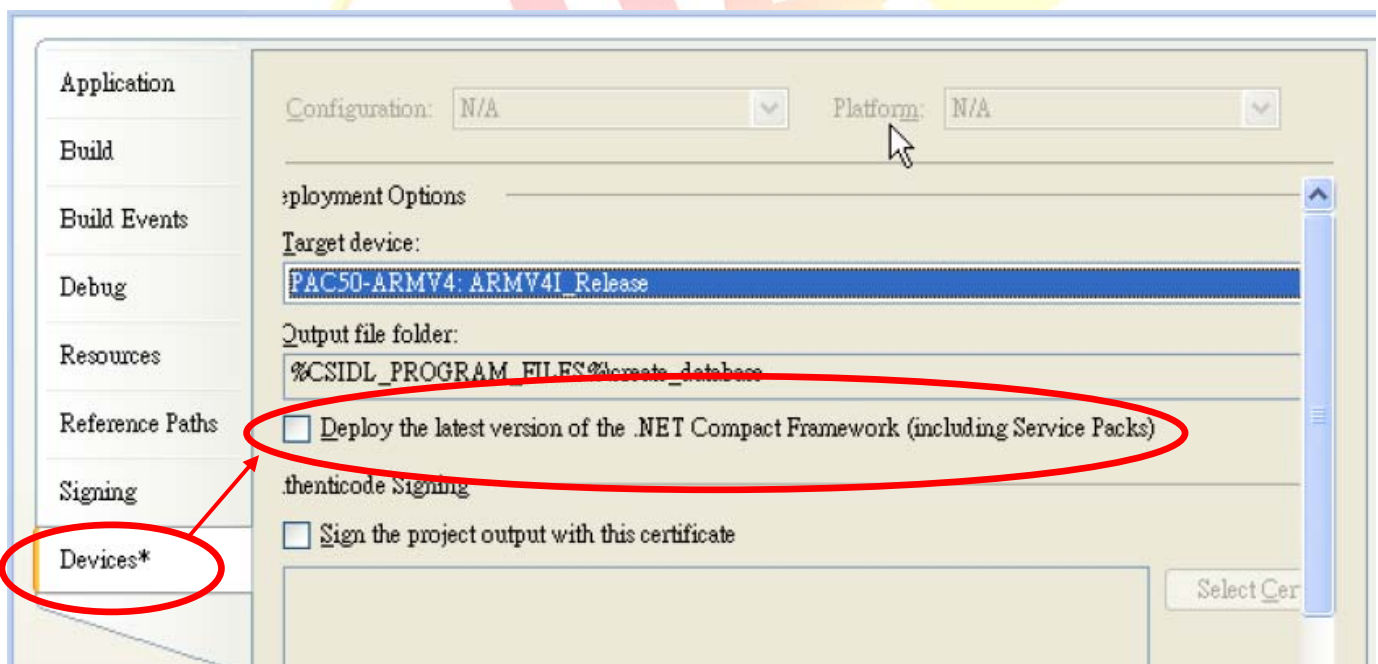
the WinPAC side:

Clientsshutdown.exe, ConmanClient2.exe, CMaccept.exe, eDbgTL.dll, TcpConnectionA.dll

**Step 3:** Click the “Project-> [Project Name] Properties...” menu option.

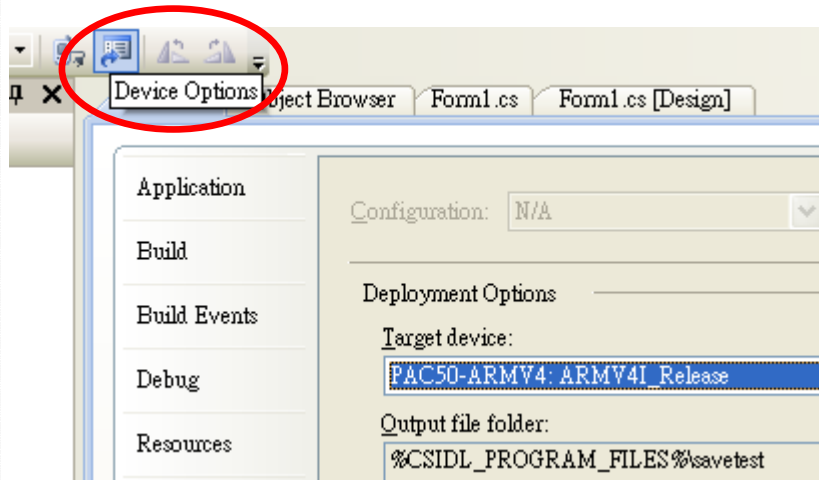


**Step 4:** On the “Devices\*” tab, deselect “Deploy the latest version of the .NET compact Framework (including Service Packs)” check box.

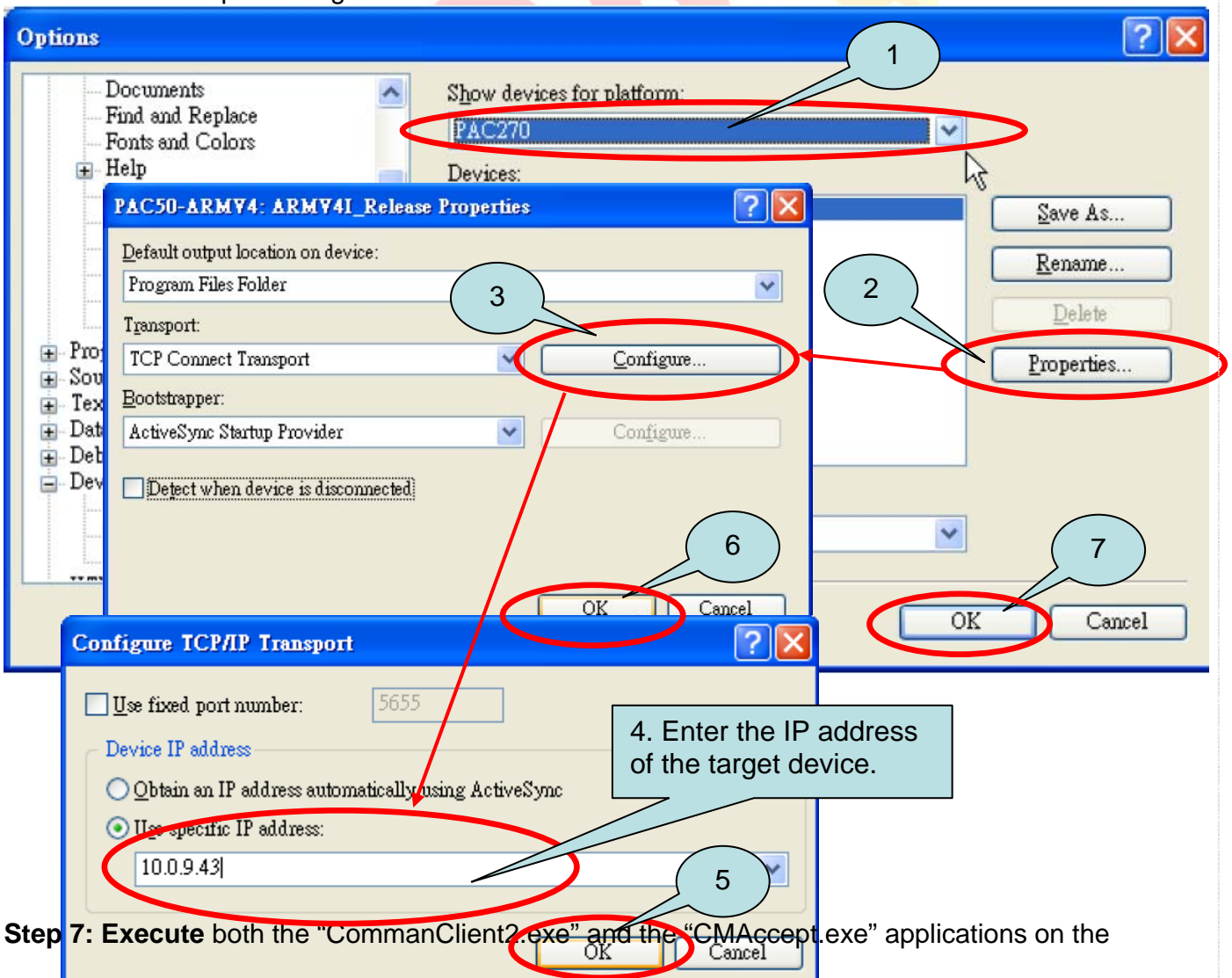


**Step 5:** Click the “Device Options” icon on the toolbar.

Classification	System and Application FAQ on WinCE PAC				No.	5-002-00	
Author	Tunglu-Yu	Version	1.0.0	Date	2010/4/22	Page	3/6



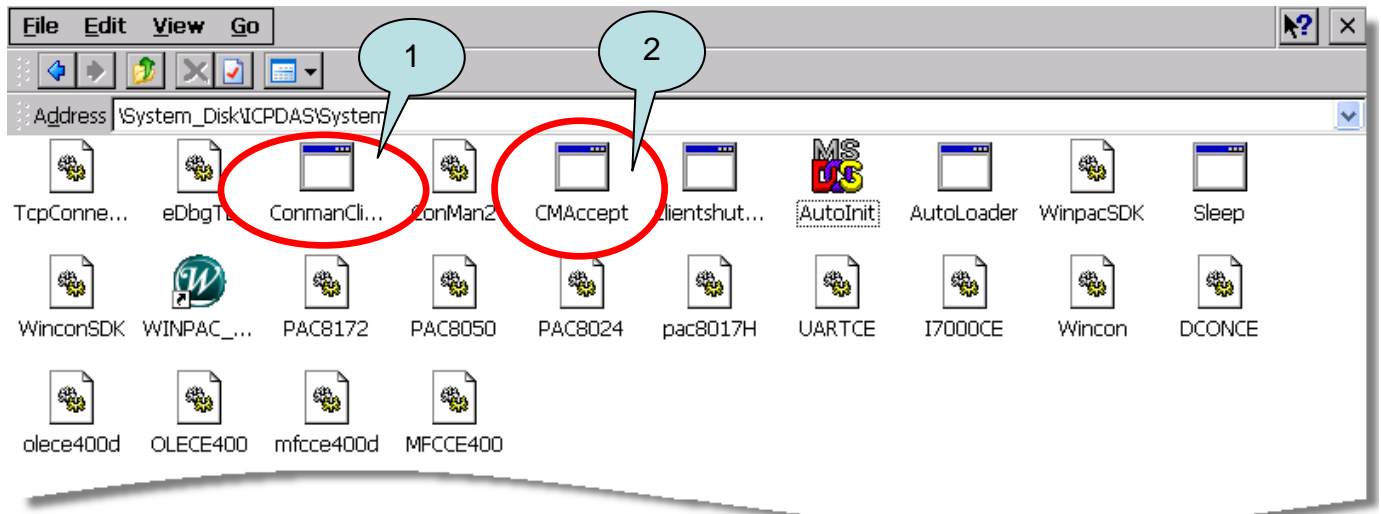
**Step 6:** Select the “PAC 270” from the “Show devices platform” list, and then click the “Properties...” button. In the properties dialog window, click the configure button and then enter the IP address of the target device in the “use specific IP address” field in the “Configure TCP/IP Transport” dialog. Click “OK” on all open dialogs.



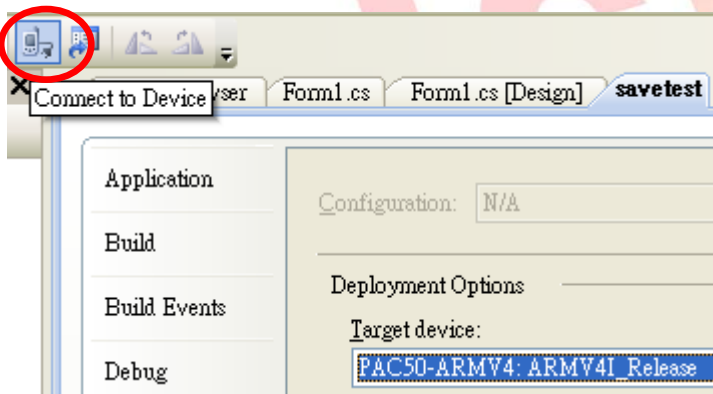
**Step 7:** Execute both the “CommanClient2.exe” and the “CMAccept.exe” applications on the

Classification	System and Application FAQ on WinCE PAC				No.	5-002-00	
Author	Tunglu-Yu	Version	1.0.0	Date	2010/4/22	Page	4/6

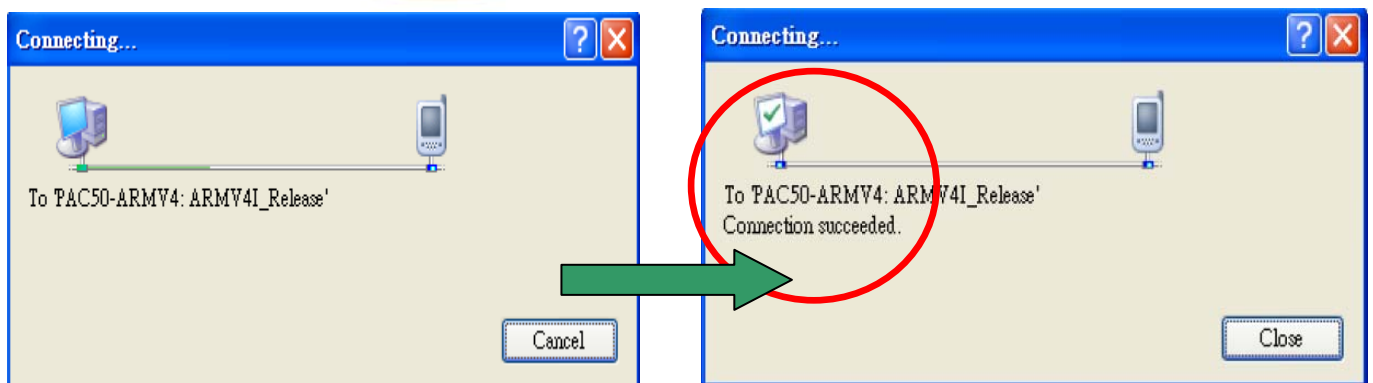
WinPAC.



**Step 8:** Click the "Connect to Device" icon on the toolbar.

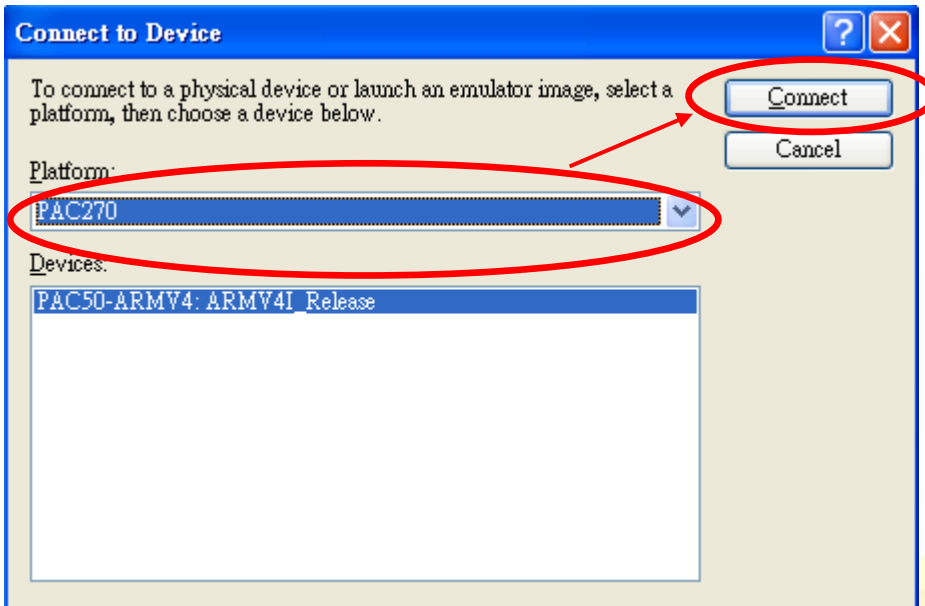


**Step 9:** Wait for the connection to be established.



**Step 10:** Select "PAC 270" from the "Platform" list and then click the "Connect" button.

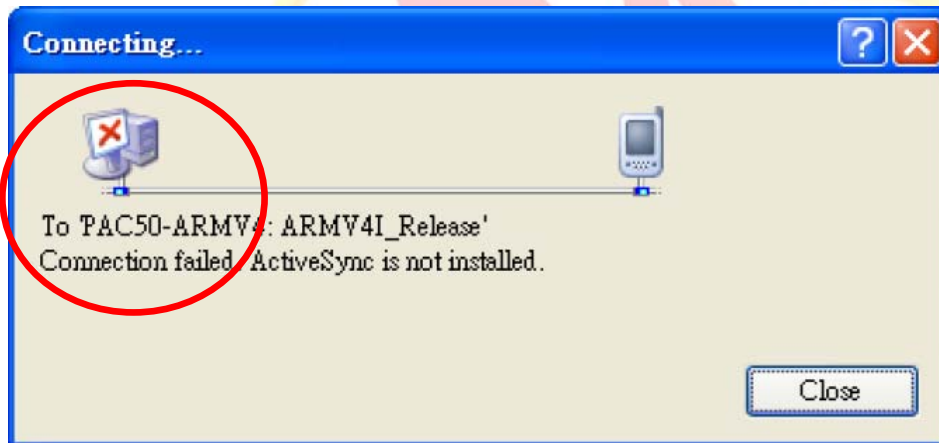
Classification	System and Application FAQ on WinCE PAC				No.	5-002-00	
Author	Tunglu-Yu	Version	1.0.0	Date	2010/4/22	Page	5/6



**Step 11:** After the Connection is established, you can debug the program online.

**FAQ:**

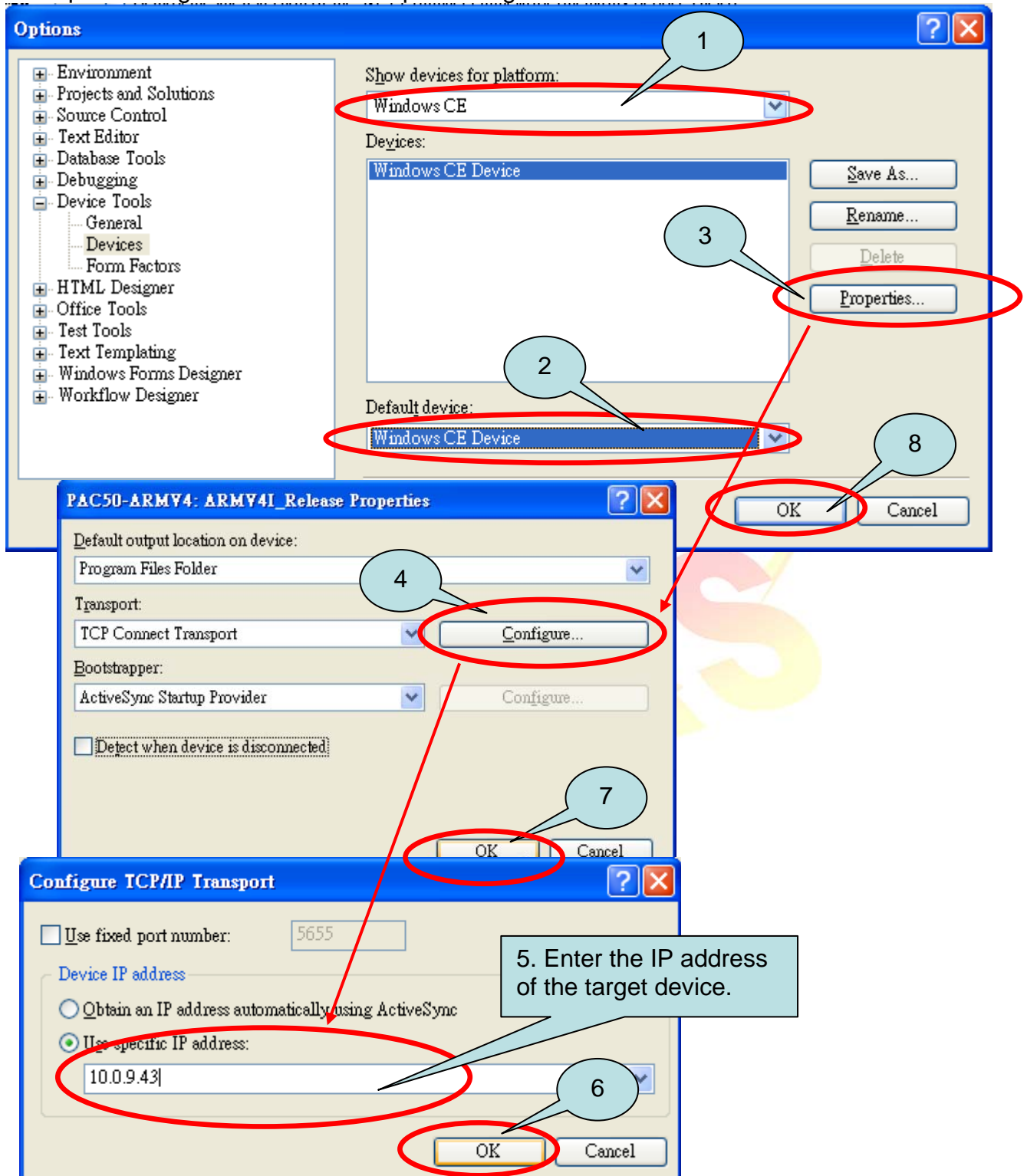
**⚠** If the connection fails, as shown below, return to step 6 to perform the following actions.



**Step 6:** Select “Windows CE” from the “Show devices for platform” list, and then click the

Classification	System and Application FAQ on WinCE PAC				No.	5-002-00	
Author	Tunglu-Yu	Version	1.0.0	Date	2010/4/22	Page	6/6

“Properties...” button. In the properties dialog window, click the configure button and then enter the IP address of the target device in the “use specific IP address” field in the “Configure TCP/IP Transport” dialog. Click “OK” on all open dialogs.



**Step 7: Go to step 7 .**