

Classification	System and Application FAQ on WinCE PAC				No.	5-001-00	
Author	Tunglu-Yu	Version	1.0.0	Date	2010/4/22	Page	1/8

How to debug EVC programs online through TCP/IP

Applies to:

<i>Platform</i>	<i>OS version</i>	<i>WinPAC/ViewPAC utility version</i>
<i>WP-8x3x</i>	<i>All versions</i>	<i>All versions</i>
<i>WP-8x4x</i>	<i>All versions</i>	<i>All versions</i>
<i>VP-25W1</i>	<i>All versions</i>	<i>All versions</i>
<i>VP-23W1</i>	<i>All versions</i>	<i>All versions</i>

To online debug the EVC programs, perform the following steps:

Tips & Warnings



You must install the WinPAC SDK before you can develop any EVC programs. The WinPAC SDK is a Software Development Kit (SDK) that contains C header files, C libraries and documents.

Below is the step-by-step procedure for installing the WinPAC SDK.

Step 1: Insert the CD into your CD-ROM drive

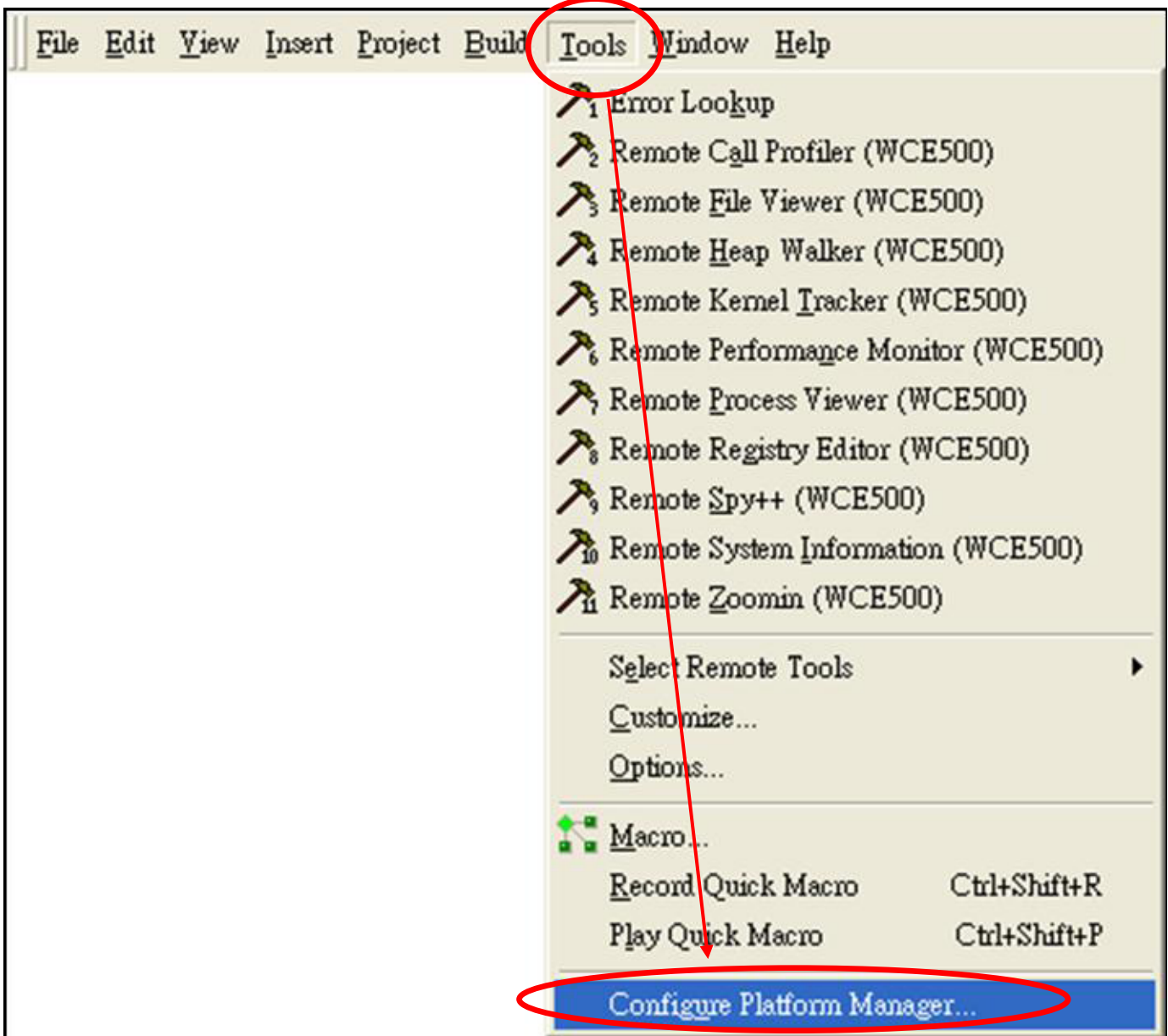
Step 2: Execute the "PAC270_SDK_YYYYMMDD.msi" file which is located in:

CD:\Napdos\wp-8x4x_ce50\SDK\

Step 3: Follow the prompts until the installation is complete

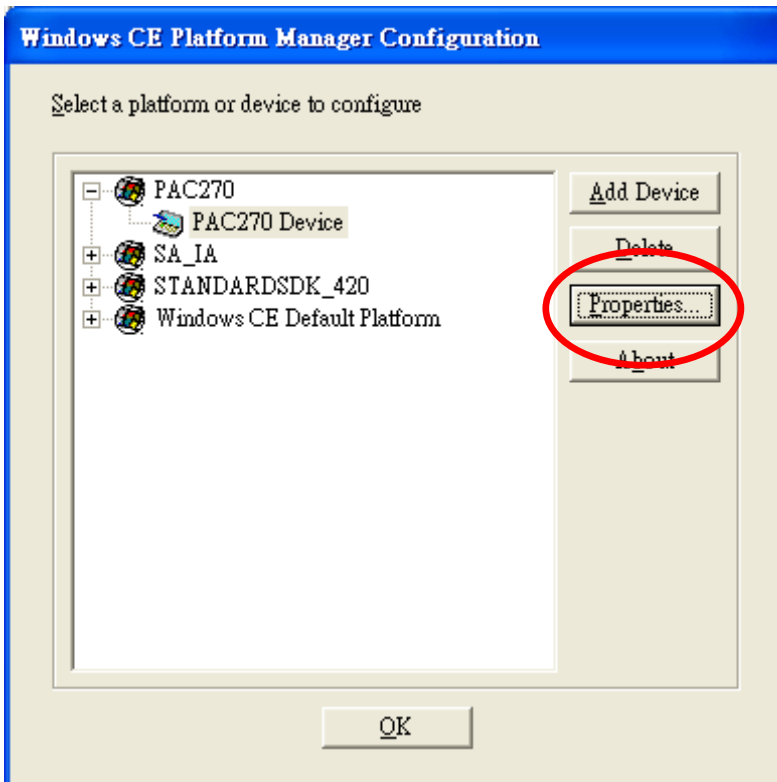
Classification	System and Application FAQ on WinCE PAC				No.	5-001-00	
Author	Tunglu-Yu	Version	1.0.0	Date	2010/4/22	Page	2/8

Step 1: Click the “Tools->Configure Platform Manager...” menu option.

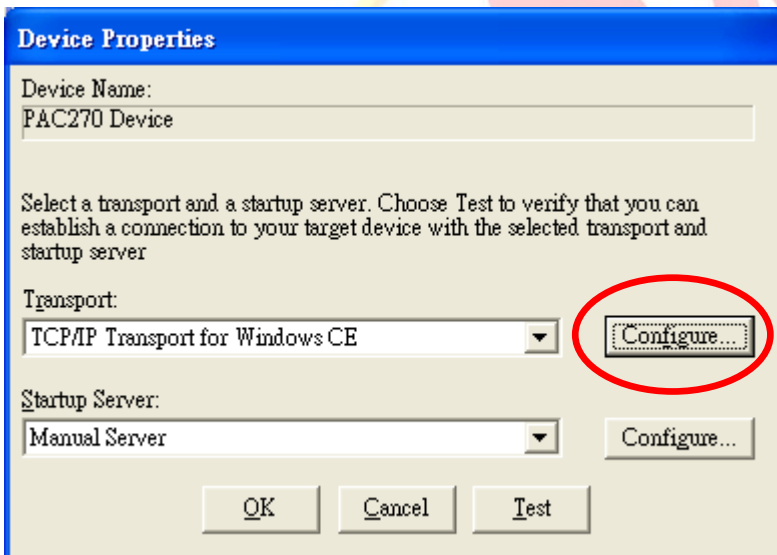


Classification	System and Application FAQ on WinCE PAC				No.	5-001-00	
Author	Tunglu-Yu	Version	1.0.0	Date	2010/4/22	Page	3/8

Step 2: Click the “Properties...” button.

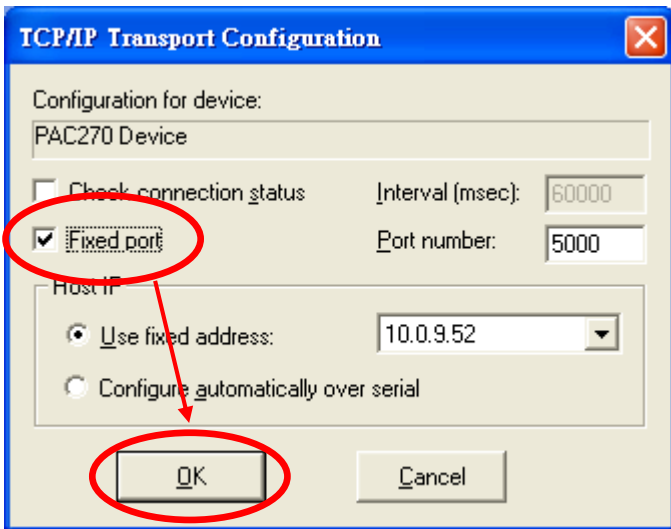


Step 3: Click the “Configure...” button.

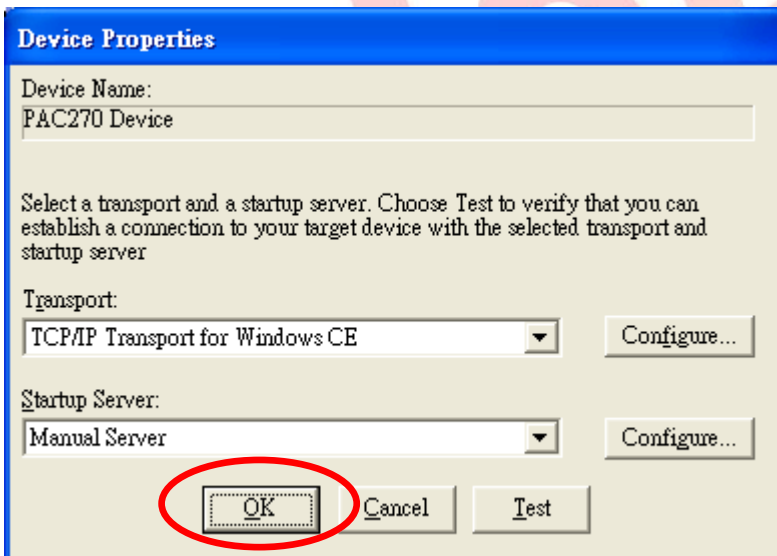


Classification	System and Application FAQ on WinCE PAC				No.	5-001-00	
Author	Tunglu-Yu	Version	1.0.0	Date	2010/4/22	Page	4/8

Step 4: Check the “Fixed port” check box and click the “OK” button.

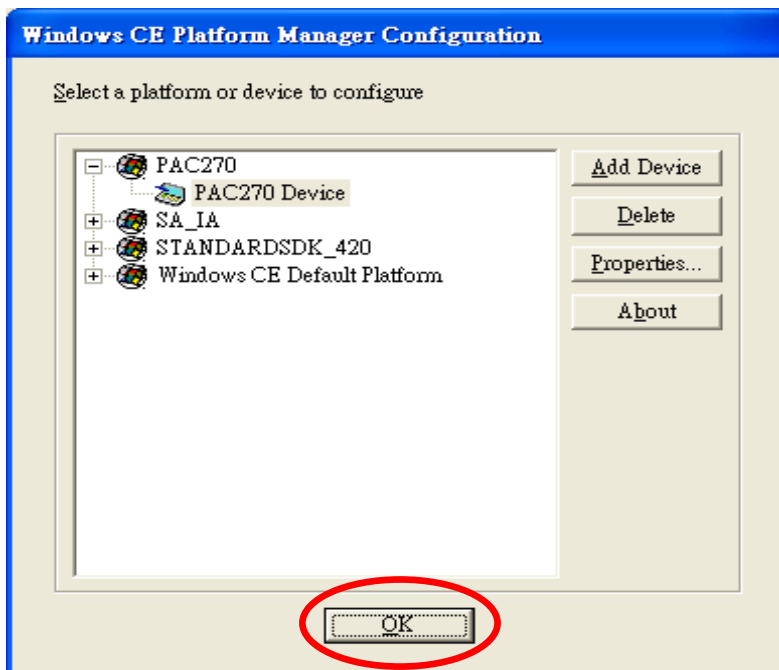


Step 5: Click the “OK” button.

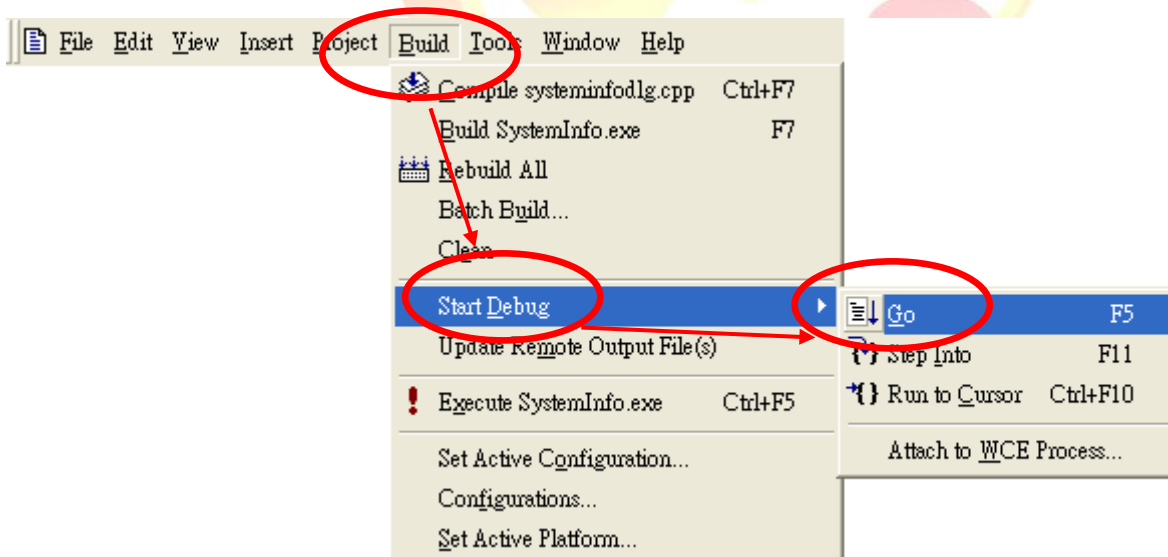


Classification	System and Application FAQ on WinCE PAC				No.	5-001-00	
Author	Tunglu-Yu	Version	1.0.0	Date	2010/4/22	Page	5/8

Step 6: Click the “OK” button.

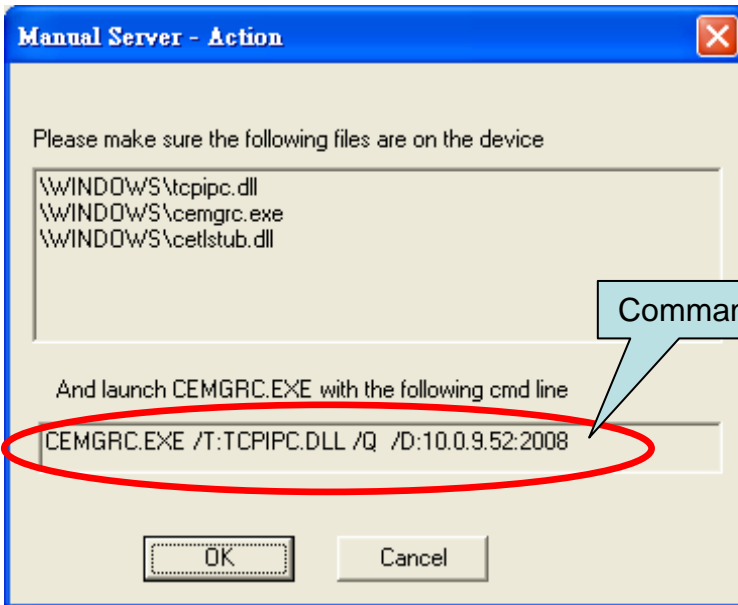


Step 7: Click the “Build” menu and select the “Start Debug” command, then click the “Go” command.

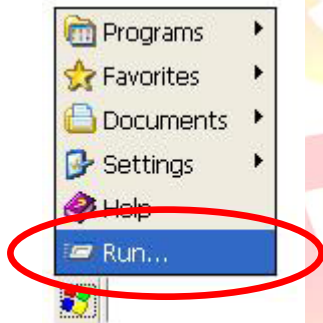


Classification	System and Application FAQ on WinCE PAC				No.	5-001-00	
Author	Tunglu-Yu	Version	1.0.0	Date	2010/4/22	Page	6/8

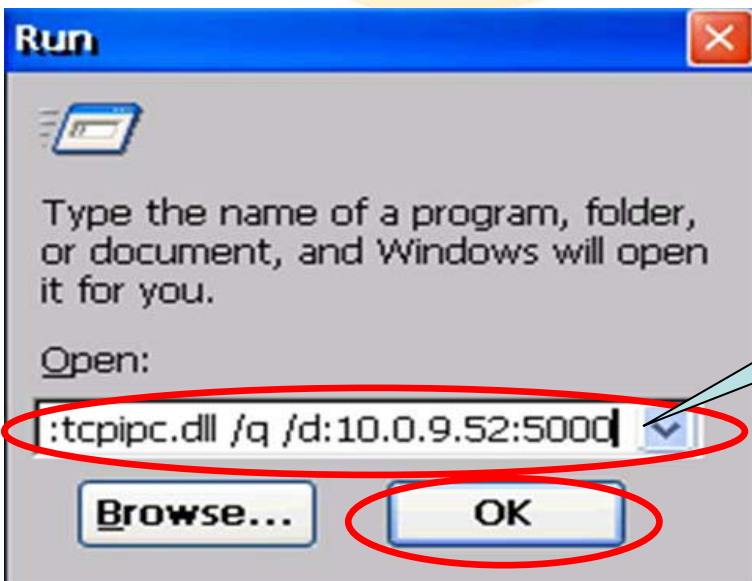
Step 8: The “Manual Server - Action” dialog will appear displaying a **command** line. Change to the WinPAC controller side to perform the next two-steps before clicking the “OK” button.



Step 9: On the WinPAC side, **click** the “Start->Run...” menu option.

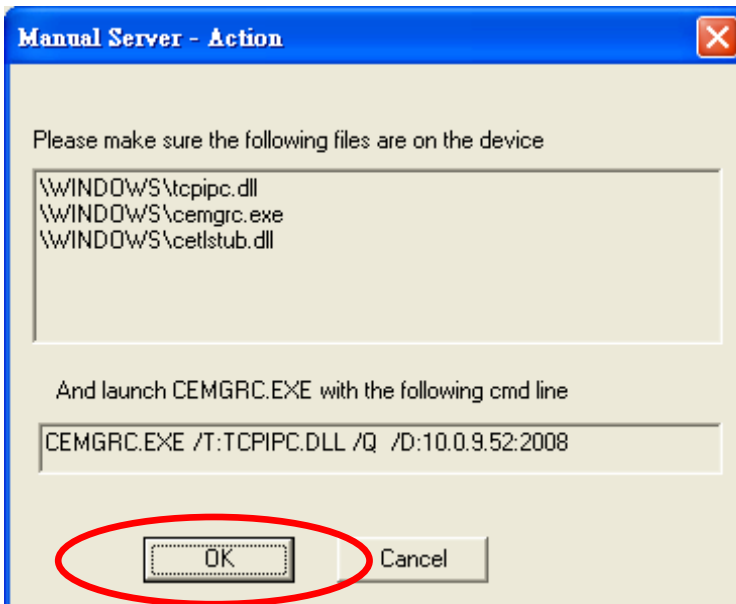


Step 10: Enter the **command** that was displayed in step 8 and then click the “OK” button

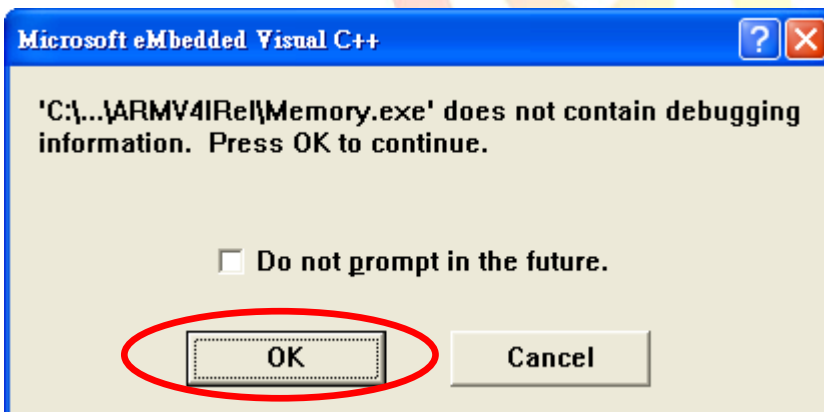


Classification	System and Application FAQ on WinCE PAC				No.	5-001-00	
Author	Tunglu-Yu	Version	1.0.0	Date	2010/4/22	Page	7/8

Step 11: Return to the Host PC side, then click the “OK” button, in the “Manual Server – Action” dialog.



Step 12: Click the “OK” button.



Step 13: After the connection is established, you can debug your programs online.

Classification	System and Application FAQ on WinCE PAC				No.	5-001-00	
Author	Tunglu-Yu	Version	1.0.0	Date	2010/4/22	Page	8/8

Tips & Warnings



If you want to quit the debugger and return to editing, click the “Stop Debugging” button in the “Debug” menu or press Shift+F5.

