

Revision history for DCON_CE

Last update:

V504[2010-Mar-17] by Martin

New support:

Configure I-7000 and I-87K DCON modules on the VP-25W1 and

VP-23W1 backplane, COM 2 and COM 3 via Ethernet

Modifications:

Modify execution form as below:

DCON_CE V501

Local IP: 10.1.0.22

COM0 (Backplane) Closed

COM2 (RS-485) Closed

COM3 (RS232/485) Closed

Slot 0

Slot 1

Slot 2

Slot 3

Slot 4

Slot 5

Slot 6

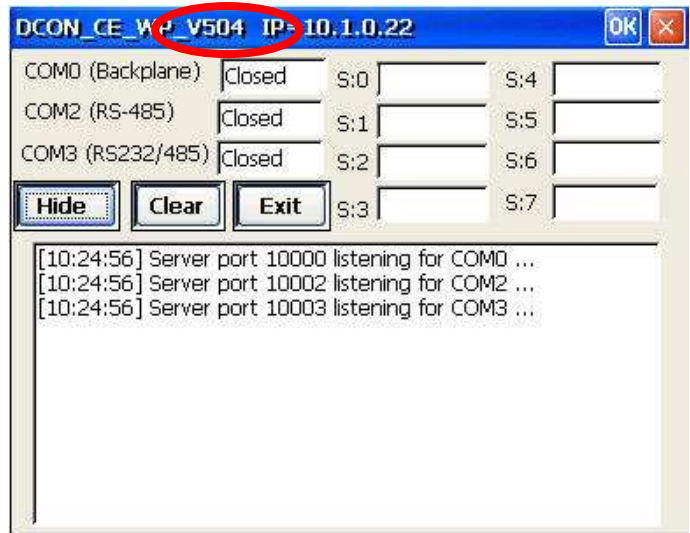
Slot 7

Hide

Exit

Clear

[10:01:41] Server port 10000 listening for COM0 ...
[10:01:41] Server port 10002 listening for COM2 ...
[10:01:41] Server port 10003 listening for COM3 ...



Fixed Bug:

Can't connect with DCON_CE in the Traditional Chinese and Simplified

Chinese OS

DCON Utility:

Must be version 5.1.7 or later

Note: DCON_CE.exe rename to DCON_CE_WP.exe

All revision information:

V504[2010-Mar-17] by Martin 1

V501[2008-Jun -15] by Martin..... 4

V501 [2008-Jun-15] by Martin

First release

New support:

Configure I-7000 and I-87K DCON modules on the WinPAC-8000

backplane, COM 2 and COM 3 via Ethernet

Modifications:

None

Fixed Bug:

None

DCON Utility:

Must be version 5.0.6 or later