


# WP-8X4X OS V.1.7.3.0 Release Notes

Release Date: 03/03/2015

## Key Features:

Features	Supported	Description
OS Language	Yes	<b>WP-8x4x-EN:</b> Multi-language, including: <ul style="list-style-type: none"> <li>- English</li> <li>- German</li> <li>- Russian</li> <li>- French</li> <li>- Spanish</li> <li>- Italian</li> <li>- Korean</li> </ul> <b>WP-8x4x -SC:</b> Simplified Chinese <b>WP-8x4x -TC:</b> Traditional Chinese
.NET Compact Framework 2.0 .NET Compact Framework 3.5	Yes	V2.0.7045 for Visual Studio .Net 2005/2008 V3.5.7283.0 for Visual Studio .Net 2008
SQL CE 3.5	Yes	SQL CE 3.5 (3.5.5386.0)
FTP Server	Yes	
HTTP Server	Yes	
Telnet	Yes	
Printer	Yes (PCL 6)	Support for HP Laser Jet printers with USB and Ethernet interfaces
Display Resolution	Yes	800 * 600, 640 * 480
Touch Panel	Yes	Support for touch panels using the RS-232 and USB interface
Multiport Serial Communication Module 	Yes	Support modules: <ul style="list-style-type: none"> <li>I-8112iW (RS-232 *2)</li> <li>I-8114W (RS-232 *4)</li> <li>I-8114iW (RS-232 *4)</li> <li>I-8142iW (RS-485 *2)</li> <li>I-8144iW (RS-485 *4)</li> </ul> The maximum number of ports can be extended is 16 (i.e., 4 slots * 4 ports per module = max. of 16 ports)

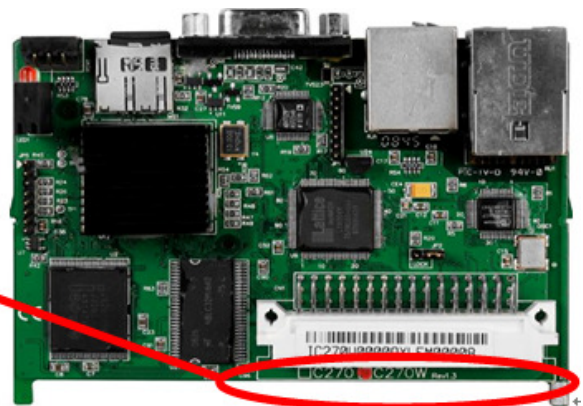
# Software and Hardware Compatibility

Software		Hardware					
OS	Eboot	PCB V1.4	PCB V2.0	PCB V2.4	PCB V2.5	PCB V2.8	PCB V3.2
V1.7.3.0 [03/03/2015]	V1.2.1.0	Yes	Yes	Yes	Yes	Yes	Yes
V1.7.2.0 [12/20/2013]	V1.2.1.0	Yes	Yes	Yes	Yes	Yes	Yes
V1.7.1.0 [02/27/2013]	V1.2.1.0	Yes	Yes	Yes	Yes	Yes	Yes
V1.7.0.1 [10/15/2012]	V1.2.1.0	Yes	Yes	Yes	Yes	Yes	-
V1.6.1.1 [06/06/2012]	V1.2.1.0	Yes	Yes	Yes	Yes	Yes	-
V1.6.0.1 [08/15/2011]	V1.2.1.0	Yes	Yes	Yes	Yes	Yes	-
V1.5.0.2 [08/03/2010]	V1.2.0.1	Yes	Yes	Yes	-	-	-
V1.5.0.1 [04/15/2010]	V1.2.0.1	Yes	Yes	Yes	-	-	-
V1.4.2.1 [10/22/2009]	V1.0.6.1	Yes	-	-	-	-	-

## Determining the hardware version

### CPU Board Version

C270
  C270W Rev 1.X



# Table of Contents

WP-8x4x OS V.1.7.3.0 Release Notes [03/03/2015].....4  
How to use the Power-on Password Protection? .....5

# WP-8x4x OS V.1.7.3.0 Release Notes [03/03/2015]

## Abstract

This release fixes a problem of LAN1 not working when the “Automatically adjust clock for daylight saving” function is enabled; and adds new supports for the power-on password protection.

## New Features

- Adds support for power on password protection.

## Improvements and Bug Fixes

- Solved the problem of LAN1 not working when the “Automatically adjust clock for daylight saving” function is used.

## Eboot Version

- No updates (V1.2.1.0, 09/27/2011)

## Software and Hardware Compatibility

Software		Hardware					
OS	Eboot	PCB V1.4	PCB V2.0	PCB V2.4	PCB V2.5	PCB V2.8	PCB V3.2
V1.7.3.0 [03/03/2015]	V1.2.1.0	Yes	Yes	Yes	Yes	Yes	Yes

## WinPAC Utility and PACSDK

- PACSDK DLL                   Version 4.3.3.0   (Released on 12/04/2014)
- WinPAC Utility               Version 2.1.0.6   (Released on 11/30/2013)

## How to use the Power-on Password Protection?

The power-on password prevents anyone from starting the controller until they enter the correct password. With the power-on password enabled, the system is protected from unauthorized use.

The steps for setting and enabling the power-on password:

**Step 1:** Double-click on the icon of Password in the “Control Panel” window.



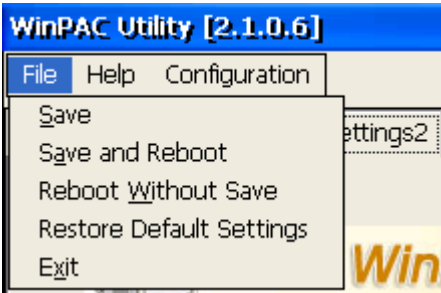
**Step 2:** Enter the same password in the Password and Confirm password fields, check the checkbox next to “Enable password protection at power-on”, and then click on the “OK” button.



**Step 3:** Execute the WinPAC Utility ◦



**Step 4:** Click on the “Save and Reboot” option in the “File” drop-down menu to save the settings and then reboot the controller.



**Step 5:** After reboot, the power-on password will be required to enter the operating system.

