

Classification	System and Application FAQ on WinCE PAC				No.	2-024-00	
Author	Tunglu-Yu	Version	1.0.0	Date	2013/05/16	Page	1/3

How to save the LCD backlight settings

Applies to:

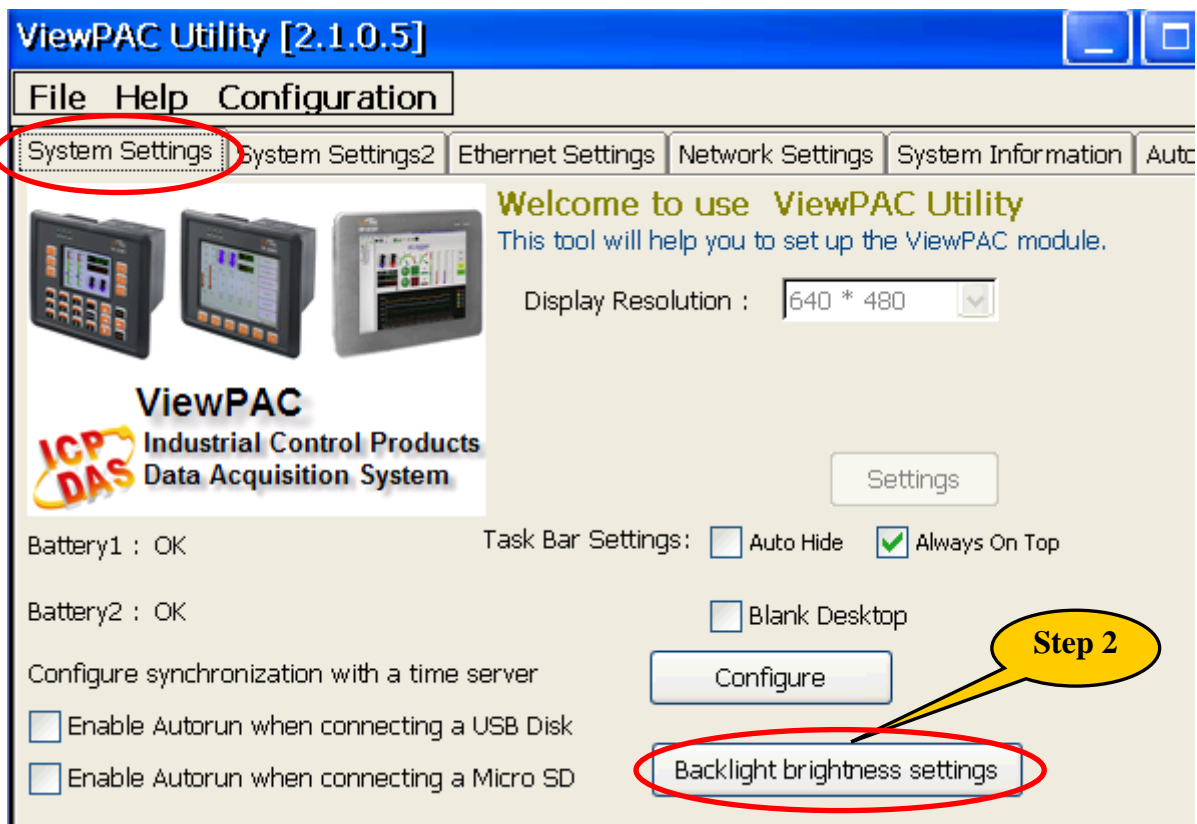
Platform	OS version	WinPAC/ViewPAC utility version
WP-8x3x	N/A	N/A
WP-8x4x	N/A	N/A
VP-25W1	V2.4.1.0 and later	V2.1.0.5 and later
VP-23W1	N/A	N/A
VP-4131	V2.4.1.0 and later	V2.1.0.5 and later

N/A: Not applicable to this platform and OS.

The VP-25W1 and VP-4131 allow users to control the brightness of ViewPAC touch panel and save the settings. Please use the version 2.1.0.5 or later of ViewPAC Utility to configure the brightness of the LCD backlight as below.

Step 1: Run the ViewPAC Utility.

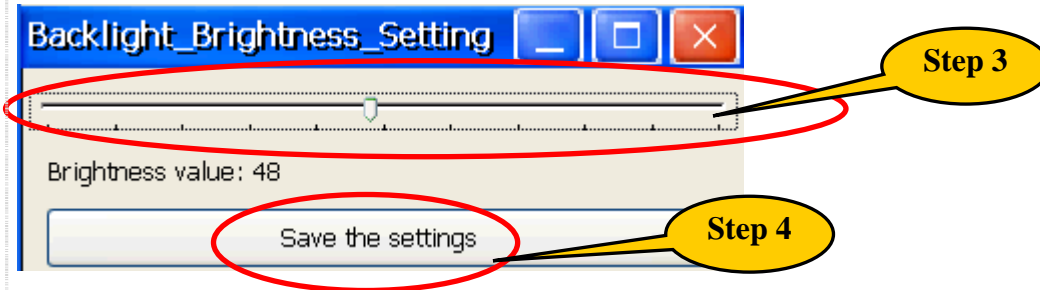
Step 2: Click the “Backlight brightness settings” button on the “System Settings” tab.



Classification	System and Application FAQ on WinCE PAC				No.	2-024-00	
Author	Tunglu-Yu	Version	1.0.0	Date	2013/05/16	Page	2/3

Step 3: Adjust the brightness to the desired level by moving the slider.

Step 4: Click the “Save the settings” button to save your changes.



Classification	System and Application FAQ on WinCE PAC					No.	2-024-00
Author	Tunglu-Yu	Version	1.0.0	Date	2013/05/16	Page	3/3

Revision History

Revision	Date	Description
1.0.0	2013/05/16	Initial release