

Classification	System and Application FAQ on WinCE PAC				No.	2-017-00	
Author	Tunglu-Yu	Version	1.0.0	Date	2013/05/16	Page	1/6

How to use FTP/Telnet authentication

Applies to:

Platform	OS version	WinPAC/ViewPAC utility version
WinPAC series	All versions (WinCE5)	All versions
ViewPAC series	All versions (WinCE5)	All versions

Please perform the follow steps to set the "User name" and "Password" for users to login the WinPAC/ViewPAC per Telnet or FTP.

If you are a ViewPAC user, use ViewPAC to replace WinPAC in the context.

Add a user account for FTP and Telnet

Step1: In WinPAC utility, click "Network Settings" tab and then "Users and Passwords" tab

Step2: Type the user name and password.

The length of input characters must be less than 20.

Step3: Press the "Add" button.

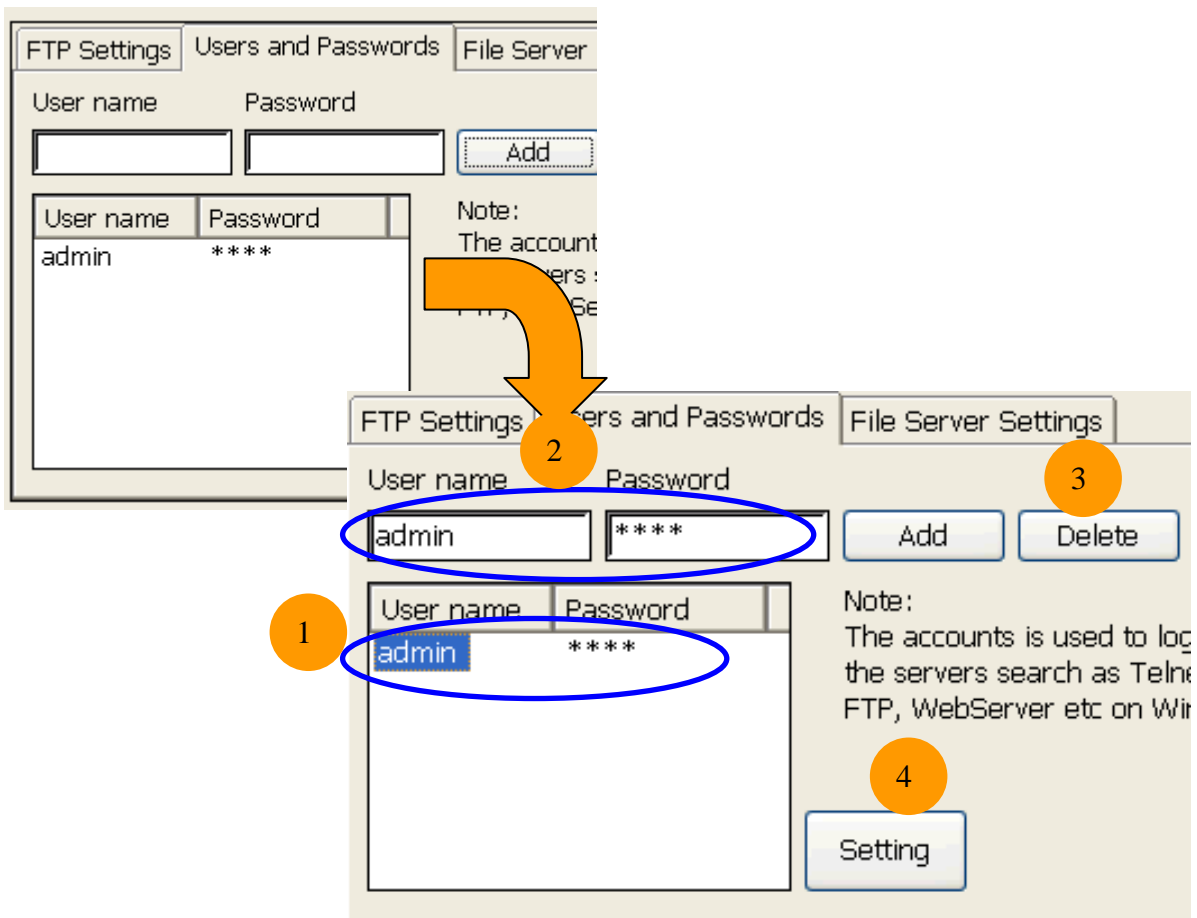
Step4: The new user name and password will be added in.

Step5: Check the pop-up dialog box for login succeeds

Classification	System and Application FAQ on WinCE PAC				No.	2-017-00	
Author	Tunglu-Yu	Version	1.0.0	Date	2013/05/16	Page	2/6

Delete a user account for FTP and Telnet

- Step1:** Click any user in the “User name” field.
- Step2:** Display the user name that is chosen.
- Step3:** Press “Delete” button to delete the user name.
- Step4:** Store the setting.



Classification	System and Application FAQ on WinCE PAC				No.	2-017-00	
Author	Tunglu-Yu	Version	1.0.0	Date	2013/05/16	Page	3/6

Use Telnet to Login WinPAC from PC

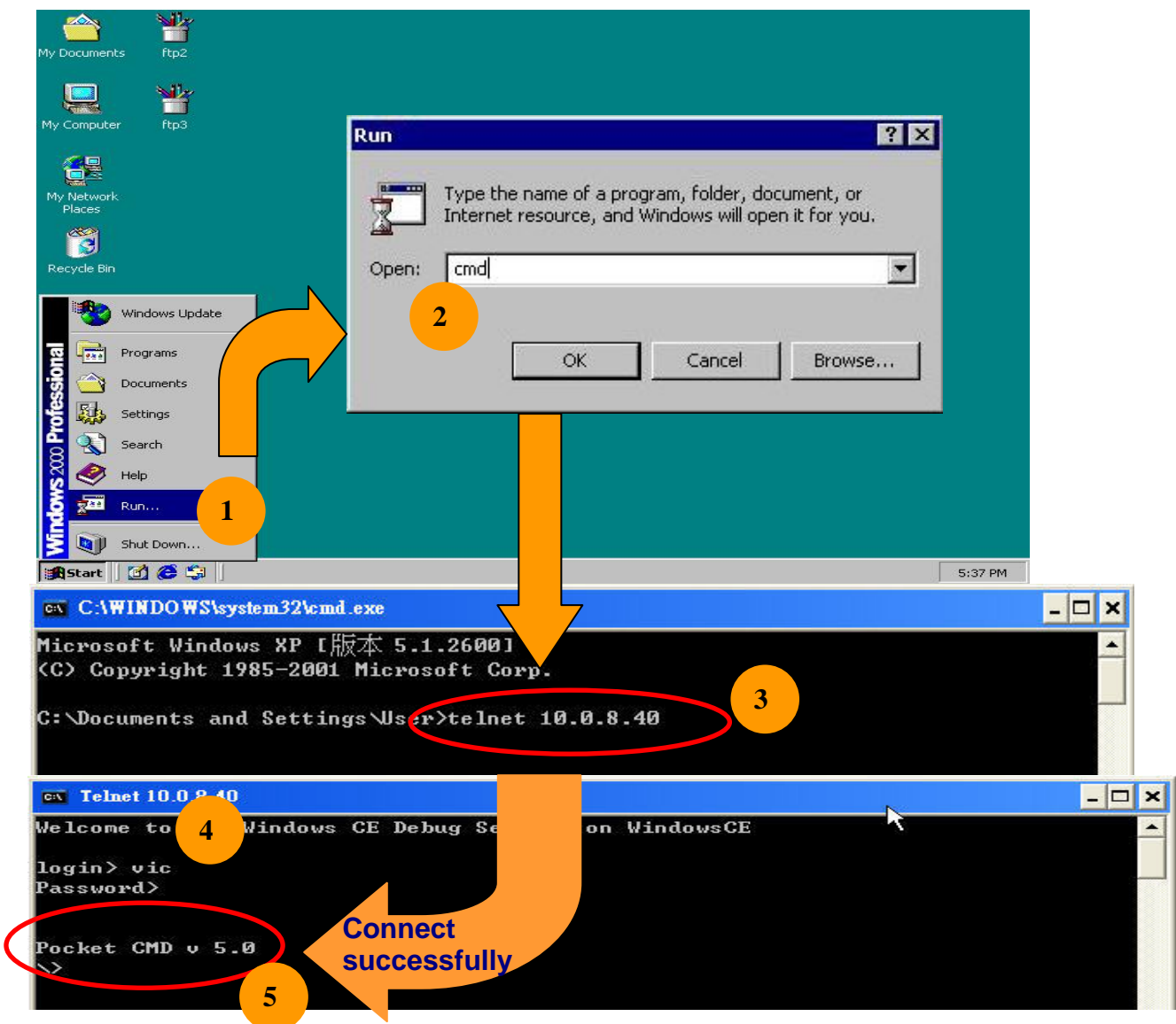
Step1: Click Start → Run on PC.

Step2: Type “cmd” to call a console program.

Step3: Type “telnet [IP address for the PAC] to connect to WinPAC.

Step4: If connection operation succeeds, type user name and password to login.

Step5: Login successfully.



Classification	System and Application FAQ on WinCE PAC				No.	2-017-00	
Author	Tunglu-Yu	Version	1.0.0	Date	2013/05/16	Page	4/6

Use FTP to Login WinPAC from PC

On WinPAC side:

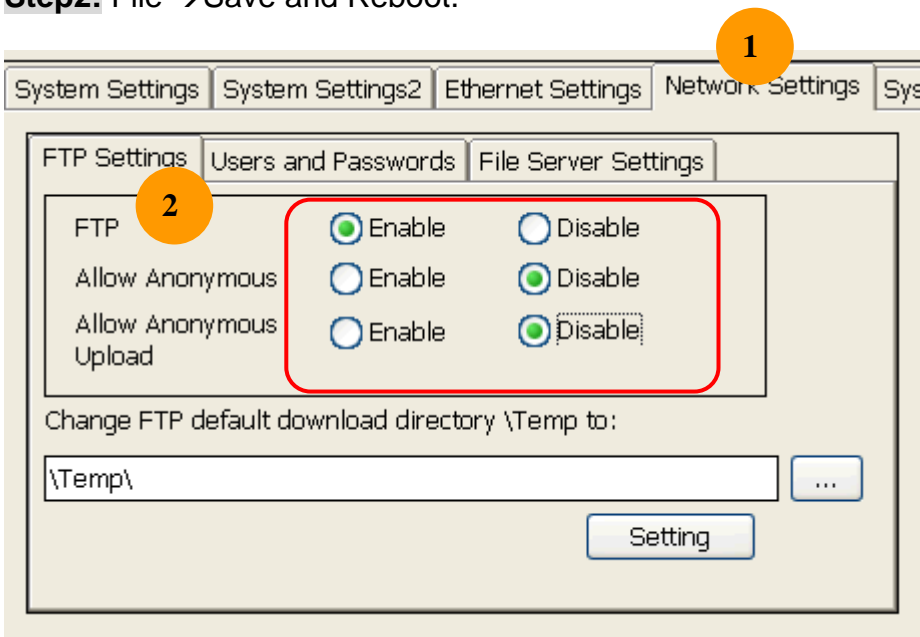
Step1: Set FTP in the WinPAC Utility.

FTP: Enable.

Allow Anonymous: Disable.

Allow Anonymous Upload: Disable.

Step2: File → Save and Reboot.



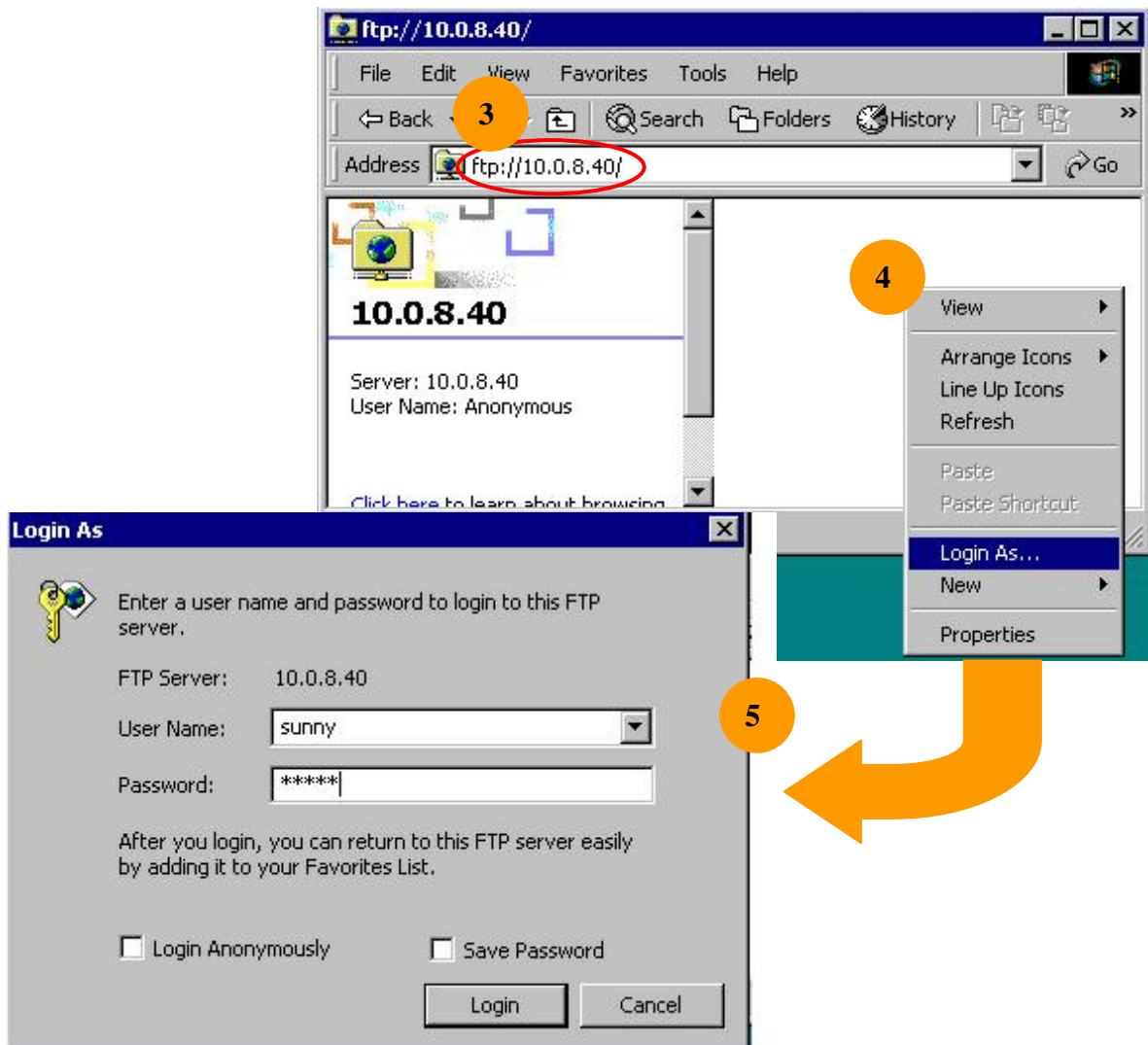
Classification	System and Application FAQ on WinCE PAC				No.	2-017-00	
Author	Tunglu-Yu	Version	1.0.0	Date	2013/05/16	Page	5/6

On PC side:

Step3: On PC, open a windows and type “ftp:// [IP address for the PAC]” and press “Enter”.

Step4: Click right mouse button and select “Login As...”.

Step5: Input user name and password.



Classification	System and Application FAQ on WinCE PAC				No.	2-017-00	
Author	Tunglu-Yu	Version	1.0.0	Date	2013/05/16	Page	6/6

Revision History

Revision	Date	Description
1.0.0	2013/05/16	Initial release