

Classification	System and Application FAQ on WinCE PAC				No.	2-010-00	
Author	Tunglu-Yu	Version	1.0.1	Date	2013/08/16	Page	1/3

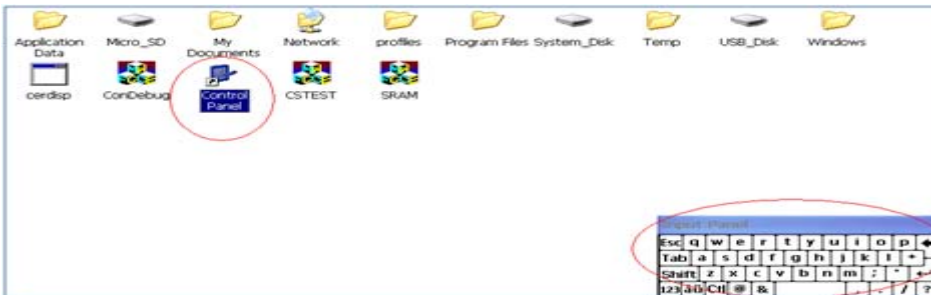
How to change the size of Input Panel

Applies to:

Platform	OS version	WinPAC/ViewPAC utility version
WP-8x3x/ WP-8x4x	All versions	All versions
WP-5000	All versions	All versions
VP-23W1/ VP-25W1	All versions	All versions
VP-4131	All versions	All versions

To change the size of Input Panel, perform the following steps:

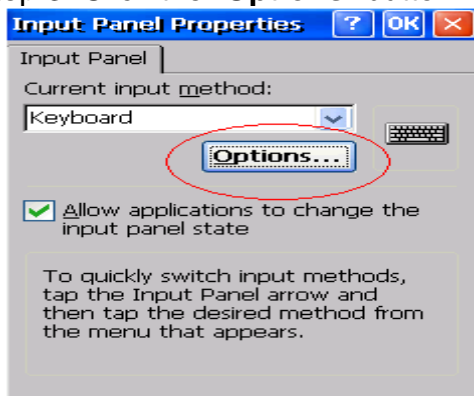
Step 1: Go to the Control Panel. Now the Panel size is large.



Step 2: Double click the icon for the Input Panel.

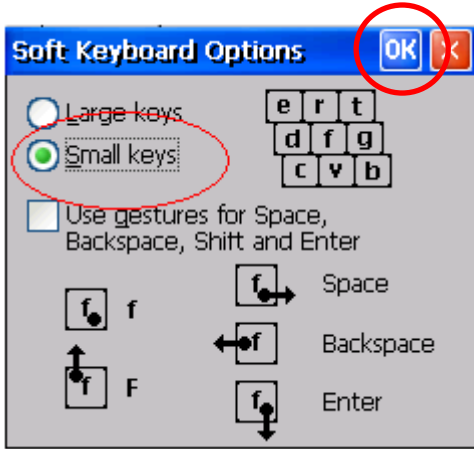


Step 3: Click the "Options" button.

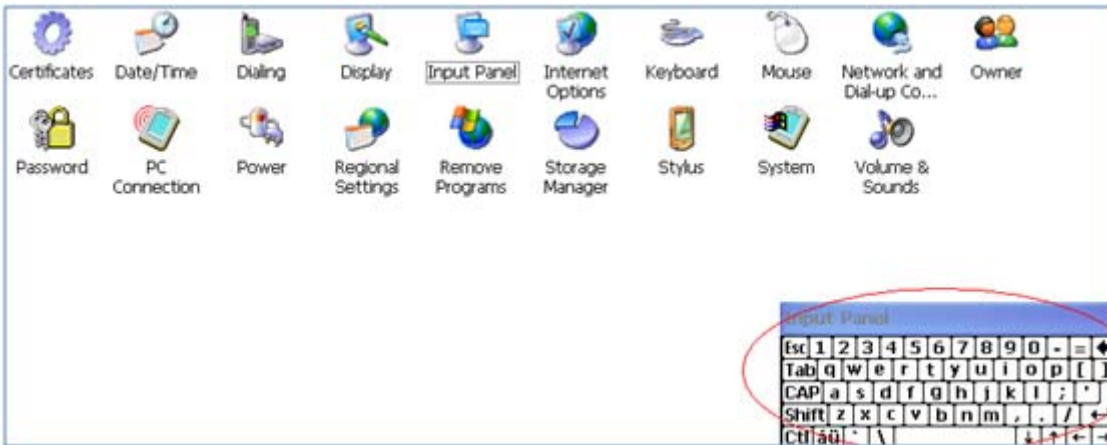


Classification	System and Application FAQ on WinCE PAC				No.	2-010-00	
Author	Tunglu-Yu	Version	1.0.1	Date	2013/08/16	Page	2/3

Step 4: Select Small keys and then click the “OK” button.

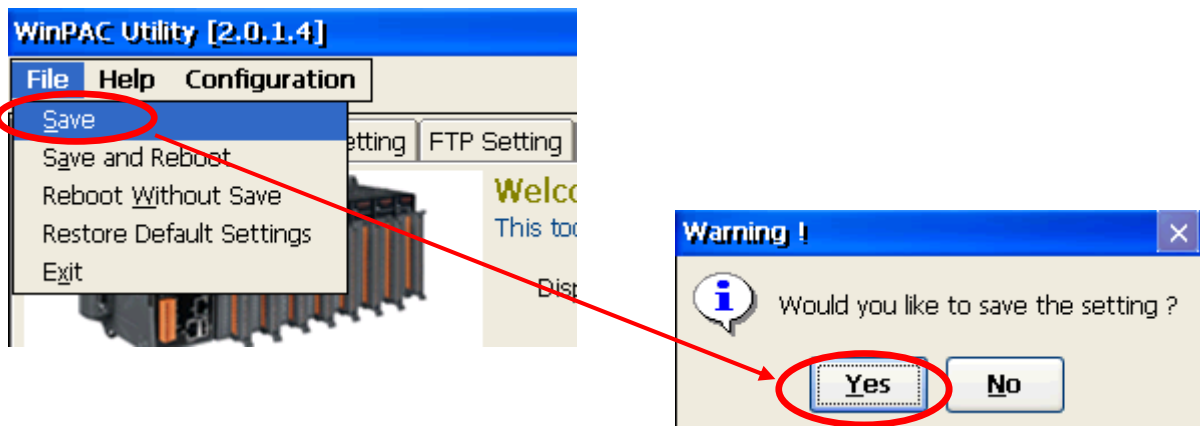


Step 5: After performing steps 1 to 4, you will see the size of the input panel become small.



Step 6: Save the setting.

Start the WinPAC/ViewPAC Utility on the desktop, click the “File” → ”Save” menu option, and then click the “Yes” button



Classification	System and Application FAQ on WinCE PAC				No.	2-010-00	
Author	Tunglu-Yu	Version	1.0.1	Date	2013/08/16	Page	3/3

Revision History

Revision	Date	Description
1.0.1	2013/08/16	NEW: Added support information for WP-5000 and VP-4131.
1.0.0	2010/02/12	Initial release