

Classification	System and Application FAQ on WinCE PAC				No.	2-002-01	
Author	Tunglu-Yu	Version	1.0.1	Date	2013/08/16	Page	1/12

How to use ActiveSync through the Serial port?

Applies to:

Platform	OS version	WinPAC/ViewPAC utility version
WP-8x3x	1.1.3.0 and later	All versions
WP-8x4x	1.4.2.1 and later	All versions
VP-25W1	1.1.0.0 and later	All versions
VP-23W1	1.1.1.1 and later	All versions
VP-4131	All versions	All versions
WP-5000	All versions	All versions

Tips & Warnings



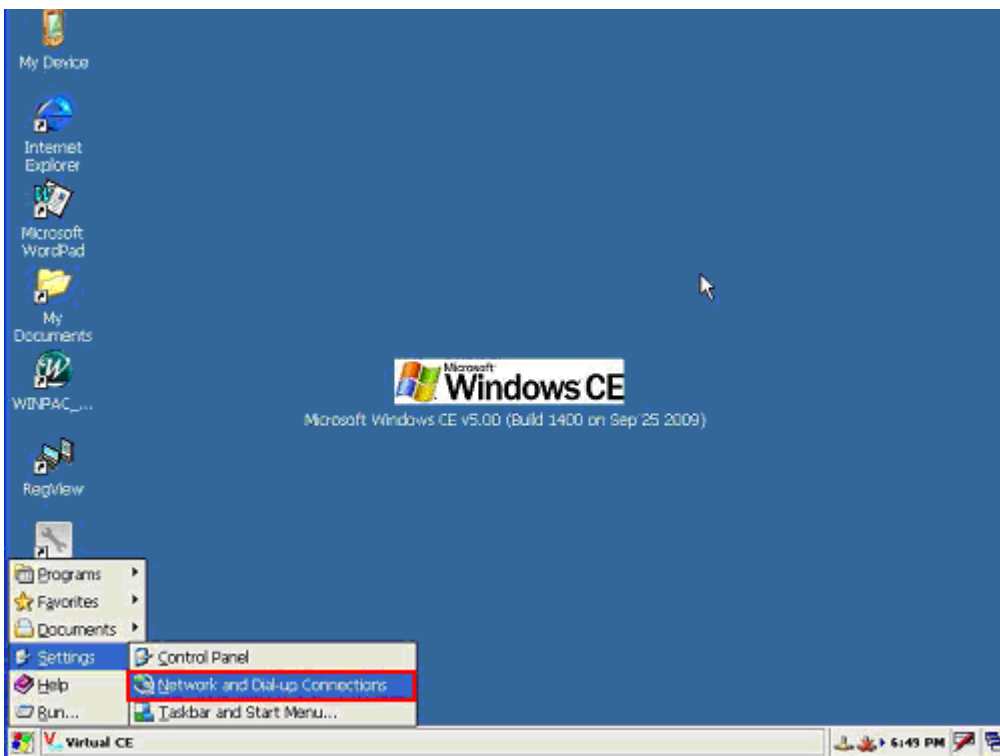
The **WP-8141** and **WP-8131** platforms don't support ActiveSync.

ActiveSync helps you to synchronize the files on your host PC with the WinPAC/ViewPAC.

To use ActiveSync, perform the following steps:

Step1: Set ActiveSync on WinPAC/ViewPAC. (On the WP-5000 it is no need to do step1, please go to the step2)

1.1. Click Start-->Settings-->Network and Dial-up Connections.

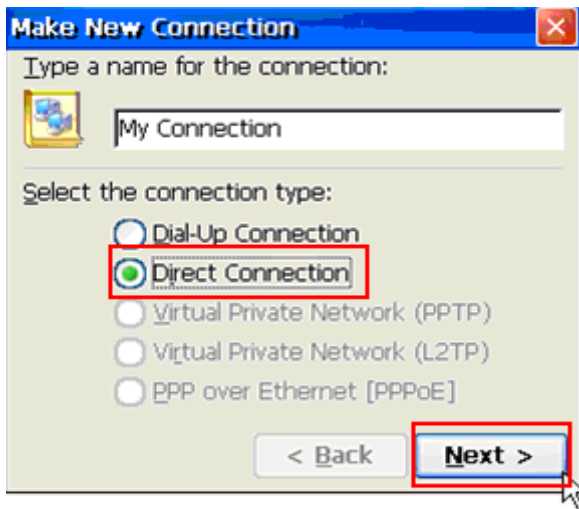


Classification	System and Application FAQ on WinCE PAC				No.	2-002-01	
Author	Tunglu-Yu	Version	1.0.1	Date	2013/08/16	Page	2/12

1.2. Double Click the “Make New Connection” icon.




1.3. Select the “Direct Connection” radio button and then click the “Next” button.



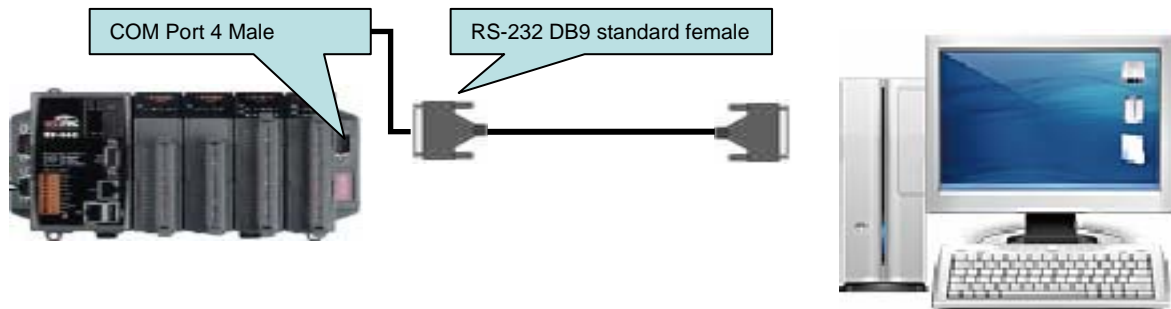
Classification	System and Application FAQ on WinCE PAC				No.	2-002-01	
Author	Tunglu-Yu	Version	1.0.1	Date	2013/08/16	Page	3/12

1.4. Choose ICPDAS-COM4 from the “Select a device” comboBox and Click the “Configure” button.

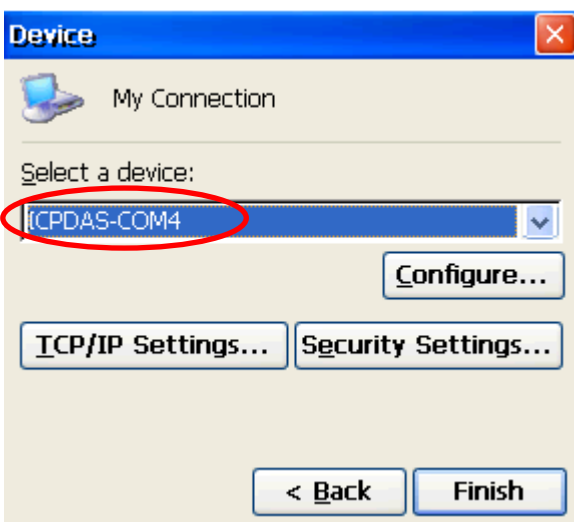
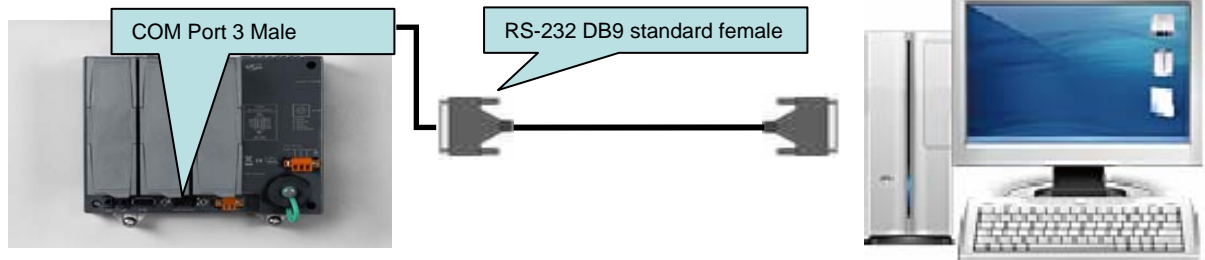
Tips & Warnings

 WP-8000 **COM4** is only used to allow the ActiveSync to communicate with the PC via the RS-232 serial, and VP-25W1/VP-23W1 **COM3** is only used to allow the ActiveSync to communicate with the PC. If you choose other COM Ports, ActiveSync will not function.

WP-8x4x/WP-8x3x



VP-2000



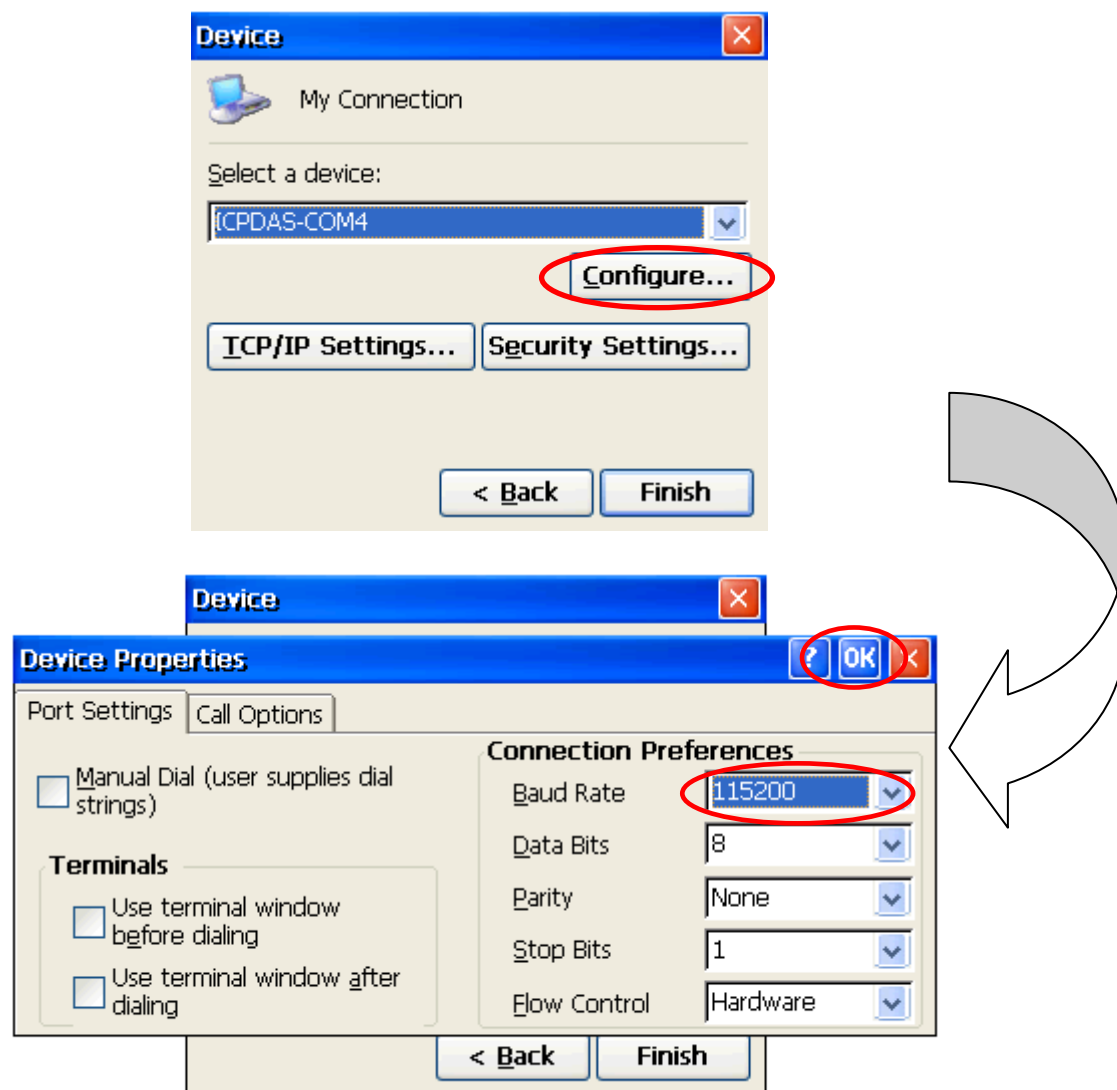
Classification	System and Application FAQ on WinCE PAC				No.	2-002-01	
Author	Tunglu-Yu	Version	1.0.1	Date	2013/08/16	Page	4/12

1.5. Select the appropriate Baud Rate and Click the “OK” button.

Tips & Warnings

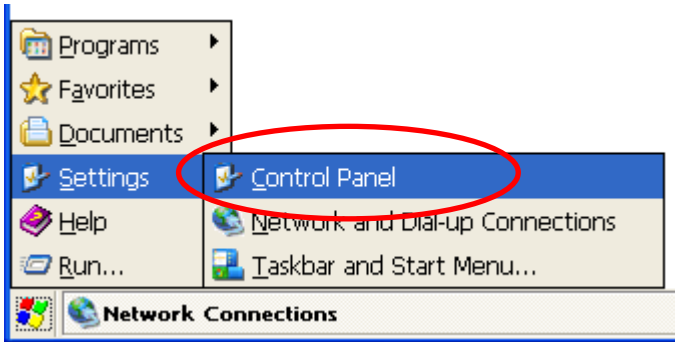
- The Baud Rate range for different ActiveSync versions is:
- For ActiveSync **version 3.7 or 3.7.1**, 19200bps or 57600bps can be selected.
 - For ActiveSync **version 3.8 or 4.5**, 19200bps, 38400bps, 57600bps or 115200bps can be selected.

The ActiveSync program from the PC side does not need to set Baud Rate.

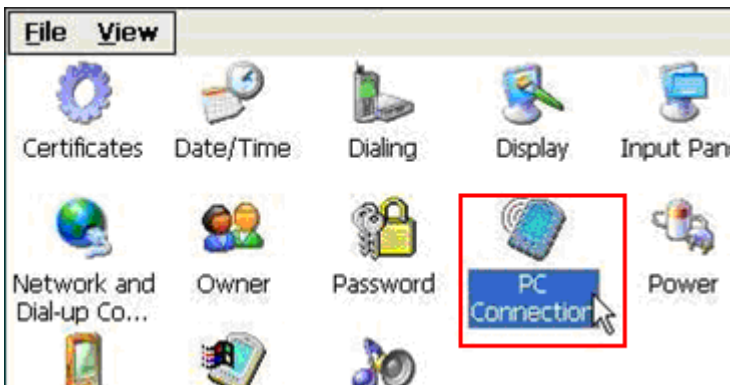


Classification	System and Application FAQ on WinCE PAC				No.	2-002-01	
Author	Tunglu-Yu	Version	1.0.1	Date	2013/08/16	Page	5/12

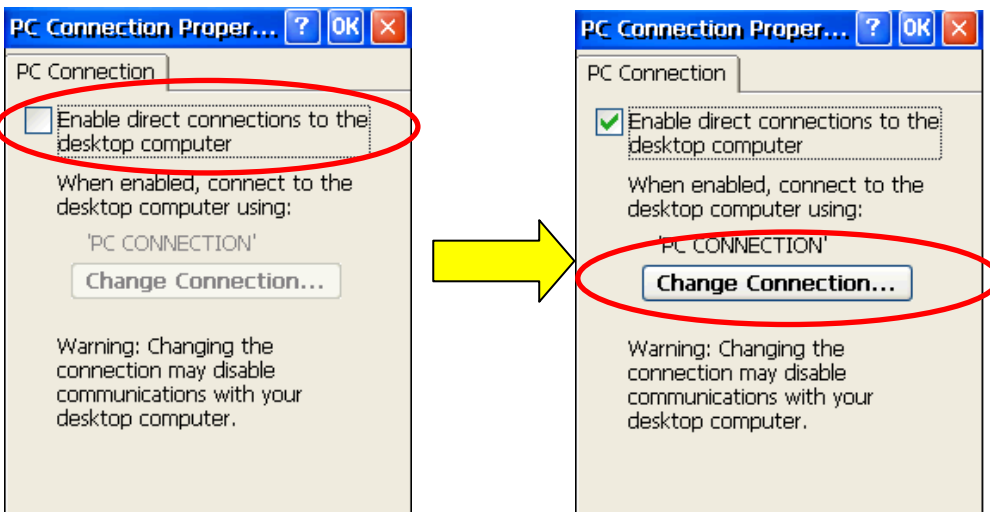
1.6. Click Start-->Settings-->Control Panel.



1.7. Click the “PC connection” icon.

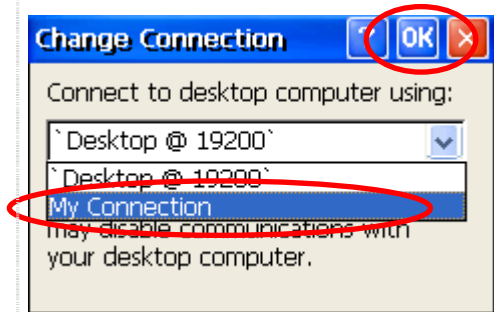


1.8. Check the “Enable direct connections to the desktop computer” checkbox and Click the “Change Connection” button.

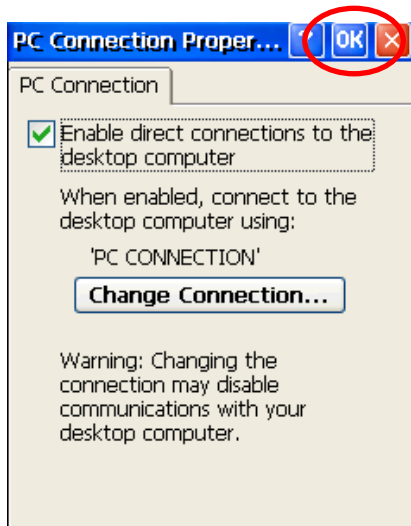


Classification	System and Application FAQ on WinCE PAC				No.	2-002-01	
Author	Tunglu-Yu	Version	1.0.1	Date	2013/08/16	Page	6/12

1.9. Change to a new connection by selecting “My Connection” from the conboBox, and then click the “OK” button.



1.10. Click the “OK” button.



Step2: Set ActiveSync on the PC side.

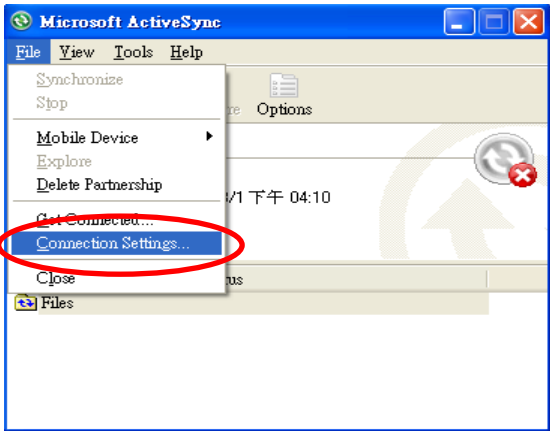
2.1. Install Microsoft ActiveSync software on the PC [Please use version 3.7 or later]. (Using ActiveSync 4.5 as an example)

2.2. Run ActiveSync

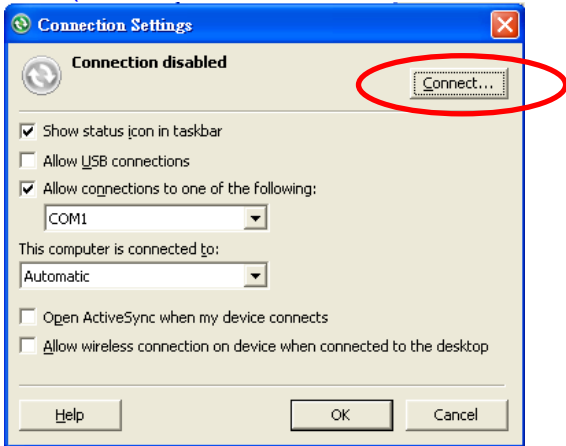


Classification	System and Application FAQ on WinCE PAC				No.	2-002-01	
Author	Tunglu-Yu	Version	1.0.1	Date	2013/08/16	Page	7/12

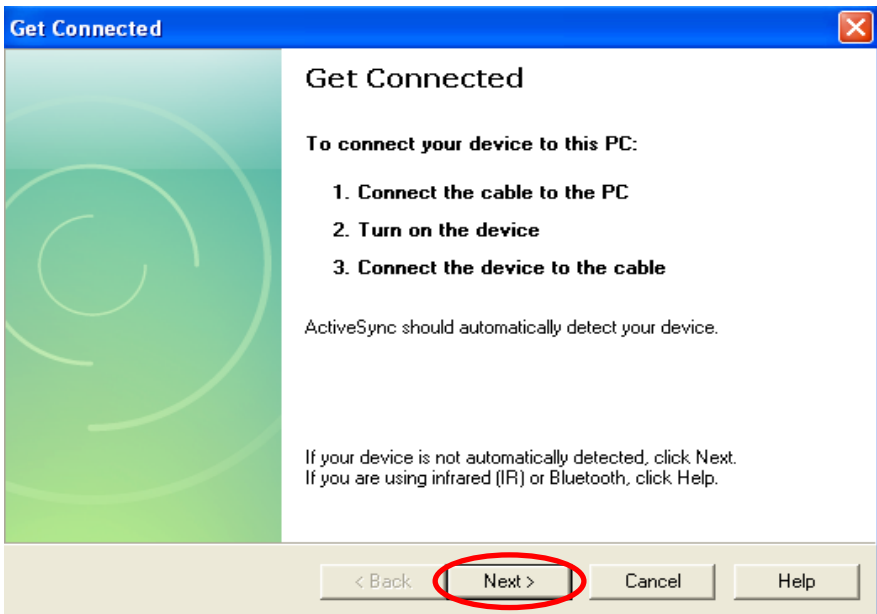
2.3. Click the “File” menu option, and then click the “Connection Settings” item.



2.4. Check “Allow connections to one of the following:” and then click the “connect” button.
 (The WP5000 need check the “Allow USB connections”.)

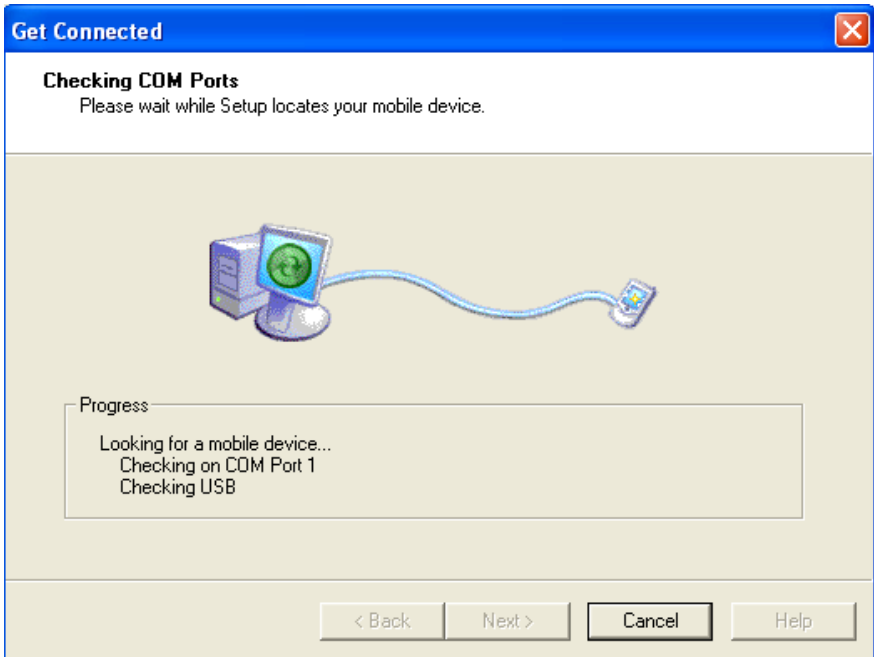


2.5. Click the “Next” button



Classification	System and Application FAQ on WinCE PAC				No.	2-002-01	
Author	Tunglu-Yu	Version	1.0.1	Date	2013/08/16	Page	8/12

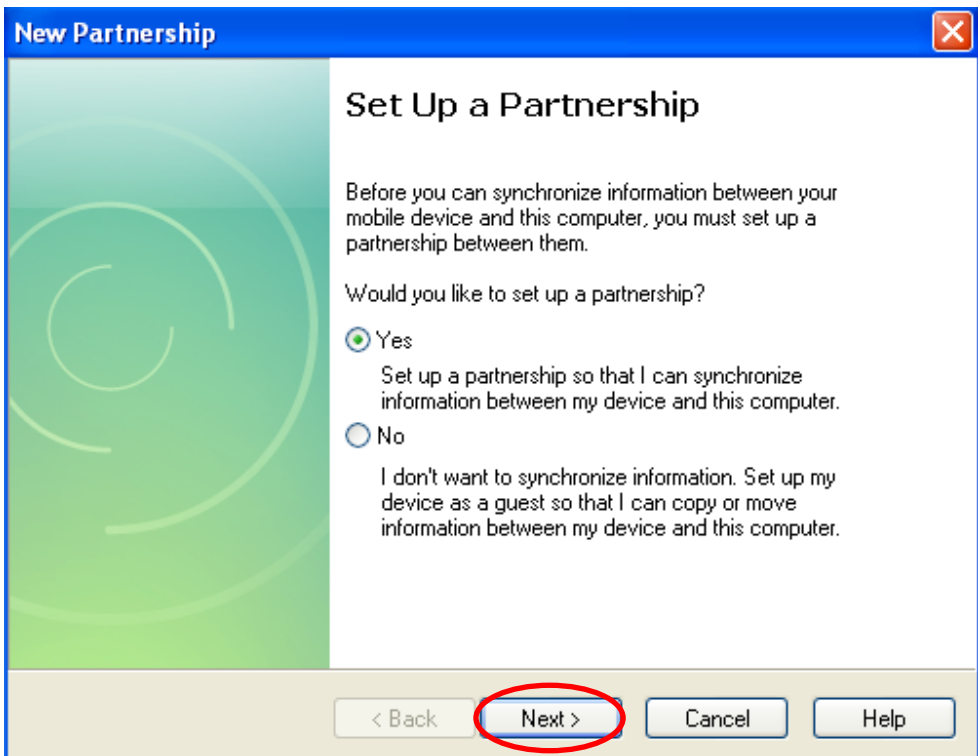
The program will then start to check for COM ports



2.6. After ActiveSync is established, the Active Sync icon will change to green.

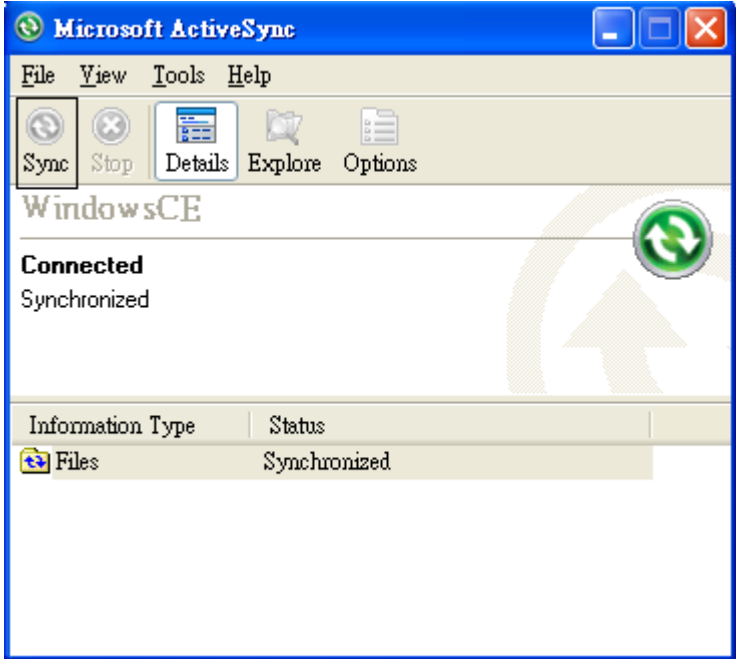


2.7. On the PC, ActiveSync will request a Partnership type to be set select "Yes" to set up a partnership, and then click the "Next" button.



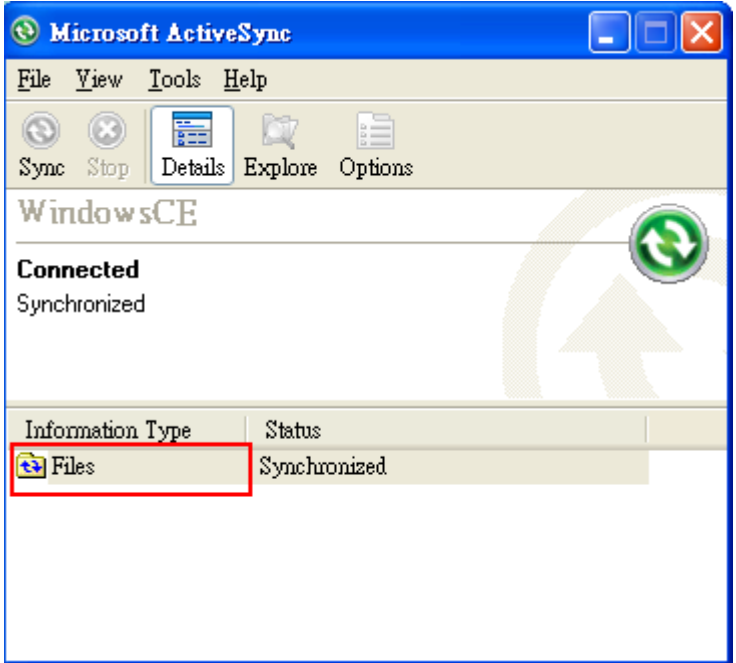
Classification	System and Application FAQ on WinCE PAC				No.	2-002-01	
Author	Tunglu-Yu	Version	1.0.1	Date	2013/08/16	Page	9/12

2.8. Click the “Sync”, and then ActiveSync can be used to synchronize the file for WinPAC/ViewPAC with the host PC.



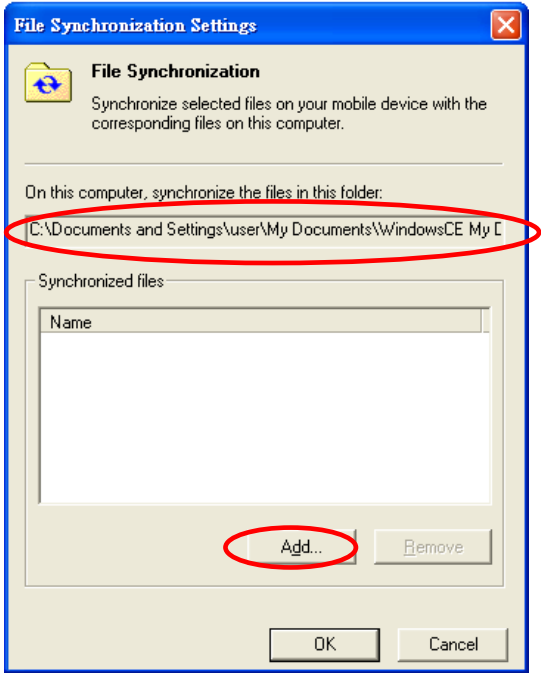
Example: Synchronize a file between the PC and WinPAC/ViewPAC.

1. Click the “Files” icon.



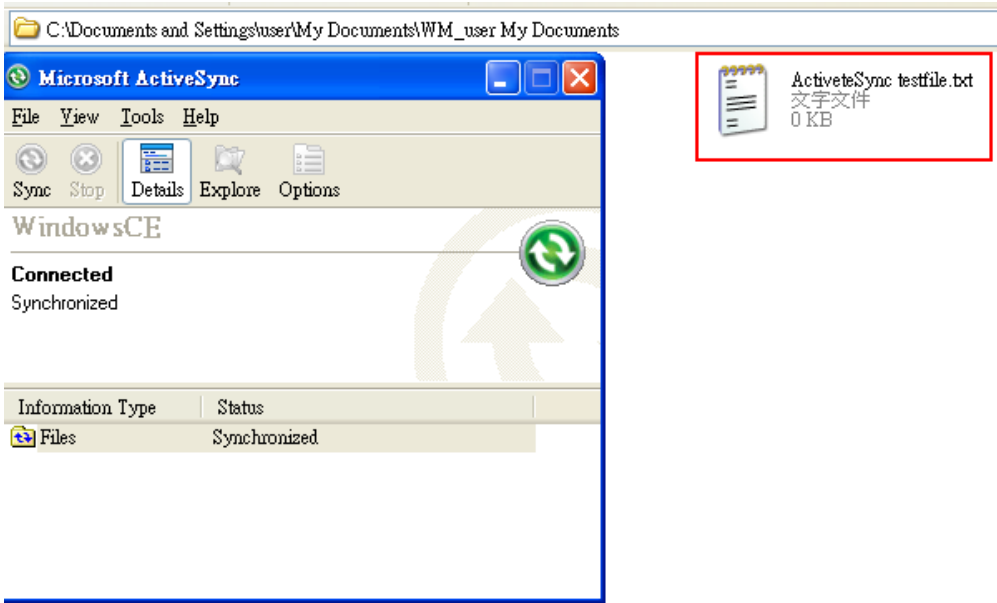
Classification	System and Application FAQ on WinCE PAC				No.	2-002-01	
Author	Tunglu-Yu	Version	1.0.1	Date	2013/08/16	Page	10/12

2. Select the file to Synchronize, or add a file to the “C:\Documents and Settings\user\My Documents\WM_user My Documents” folder.



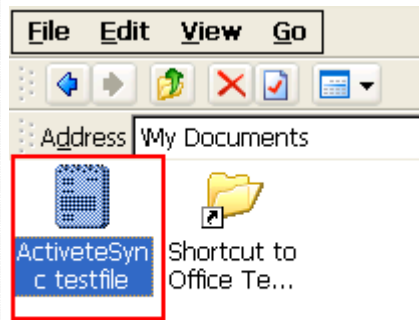
3. After clicking the “OK” button you will be able to see that the file has been synchronized between the PC and with WinPAC/ViewPAC.

PC folder:



Classification	System and Application FAQ on WinCE PAC				No.	2-002-01	
Author	Tunglu-Yu	Version	1.0.1	Date	2013/08/16	Page	11/12

Win PAC folder:



Classification	System and Application FAQ on WinCE PAC				No.	2-002-01	
Author	Tunglu-Yu	Version	1.0.1	Date	2013/08/16	Page	12/12

Revision History

Revision	Date	Description
1.0.1	2013/08/06	NEW: Added support information for WP-5000 and VP-4131.
1.0.0	2010/02/12	Initial release