

Classification	System and Application FAQ on WinCE PAC				No.	1-009-04	
Author	Tunglu-Yu	Version	1.0.0	Date	2010/2/12	Page	1/7

How to change the display type for WP-8x3x when the resolution is out of range of the current monitor

Applies to:

Platform	OS version	WinPAC/ViewPAC utility version
WP-8x3x	All versions	All versions
WP-8x4x	N/A	N/A
VP-25W1	N/A	N/A
VP-23W1	N/A	N/A

N/A: Not applicable to this platform and OS.

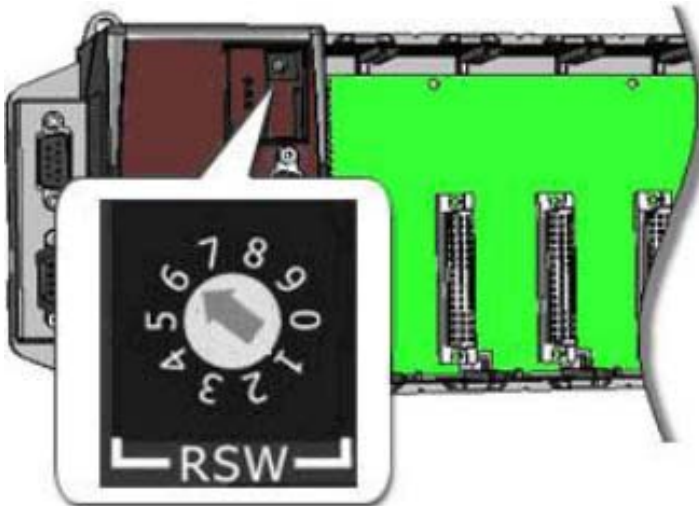
The default display resolution of WP-8x3x is 1024*768". If the setting is out of range of your monitor, you are still able to change the resolution with the VCEP- a remote control tool.

Here we illustrate how to connect the WP-8x3x via LAN.

- Step 1:** Connect both the PC client and the WP-8x3x to a valid LAN.
- Step 2:** Install the VCEP client on your PC client.

The "vcep_x.x.x.x.exe" file in vcep_x.x.x.x folder is located in Companion CD:\napdos\wp-8x4x_ce50\pc_tools\ or ftp://ftp.icpdas.com/pub/cd/winpac/napdos/wp-8x4x_ce50/pc_tools/

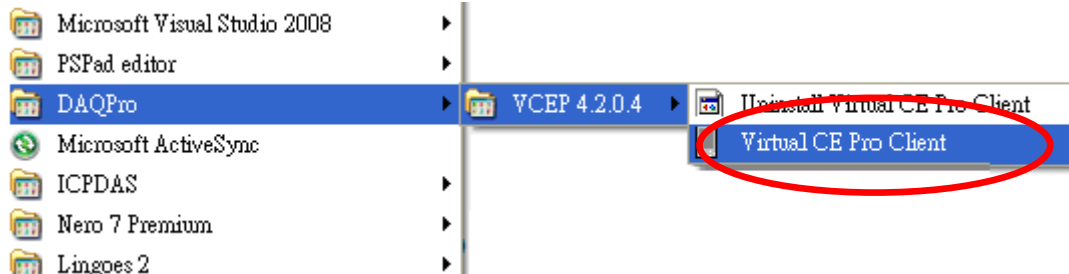
Step 3: Reboot your WinPAC in boot mode "6". The v_remote.exe file (remote server) will auto execute.



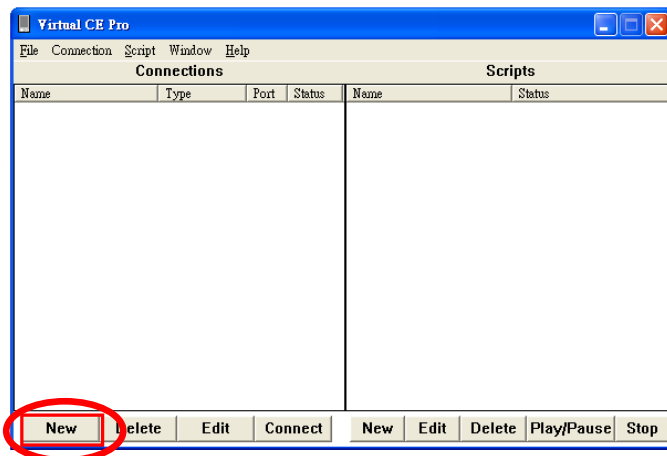
Classification	System and Application FAQ on WinCE PAC				No.	1-009-04	
Author	Tunglu-Yu	Version	1.0.0	Date	2010/2/12	Page	2/7

Step 4: Connect to the WP-8x3x with the VCEP.

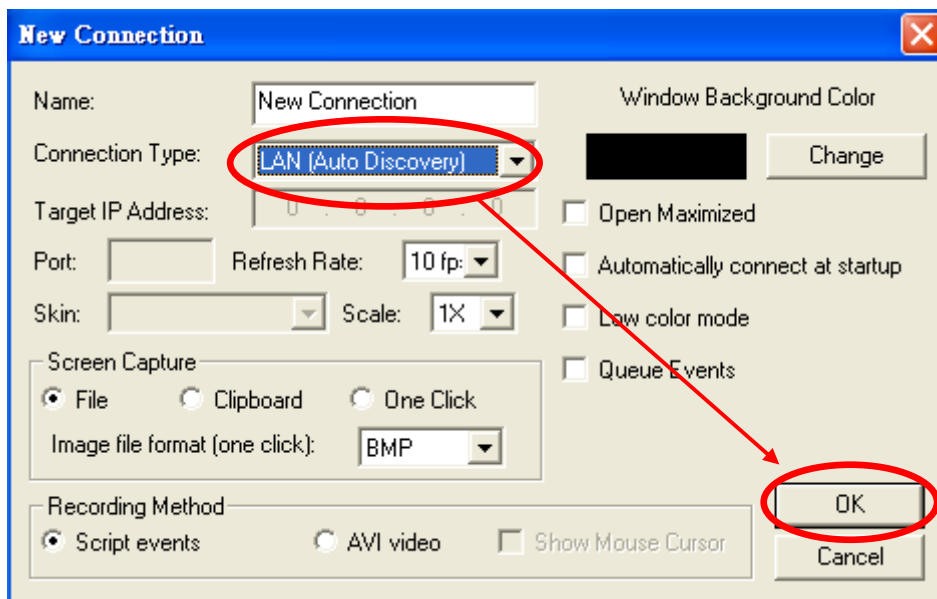
4.1. Execute the Virtual CE Pro Client on host PC.



4.2. Click the “New” button to add a new connection.

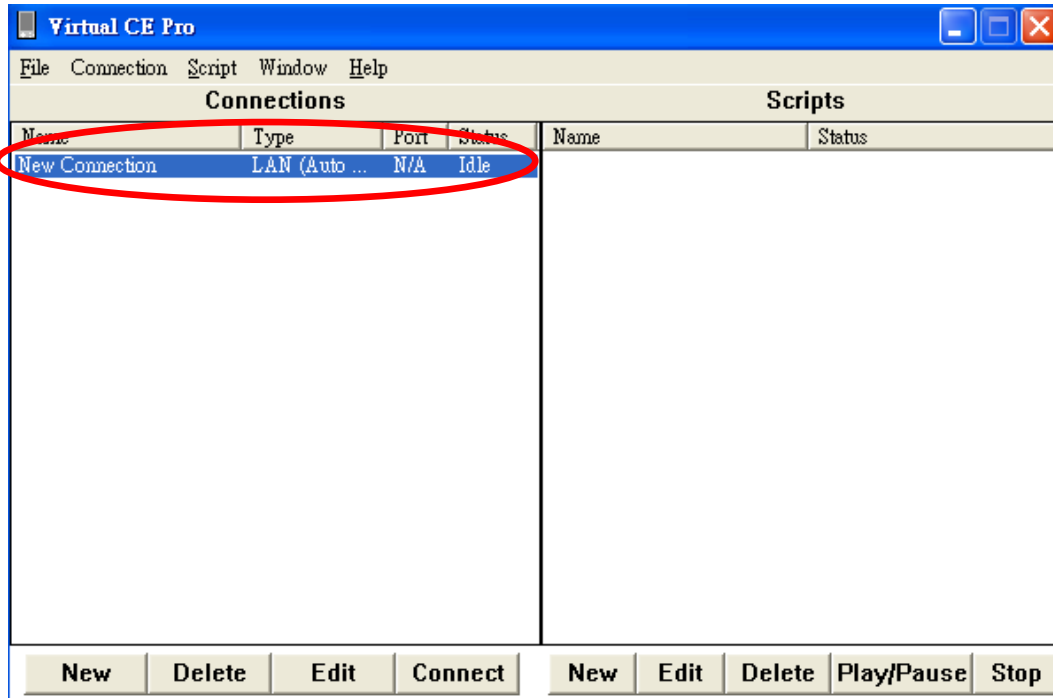


4.3. Choose the “LAN (Auto Discovery)” item from the “Connection Type” comboBox and click the “OK” button.



Classification	System and Application FAQ on WinCE PAC				No.	1-009-04	
Author	Tunglu-Yu	Version	1.0.0	Date	2010/2/12	Page	3/7

4.4. Double click the “**New connection**” item, the VCEP client program starts to scan the servers on the LAN.



4.5. Double click the item of target device (server).

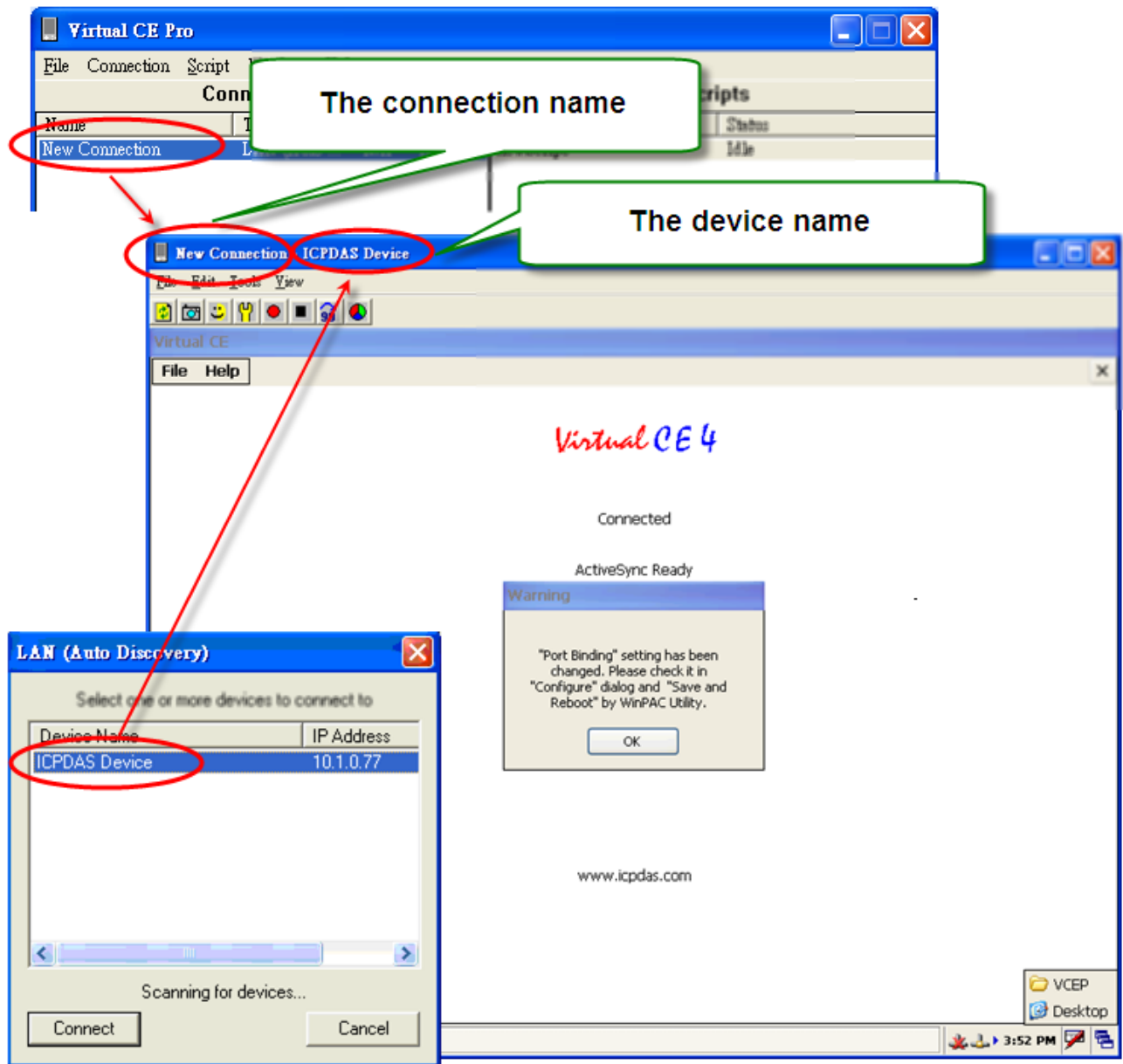
The PAC which is running the v_remote.exe will be searched and added to the device list.

For example, the server is listed with Device Name “ICPDAS Device” and IP Address “10.1.0.77”.



Classification	System and Application FAQ on WinCE PAC				No.	1-009-04	
Author	Tunglu-Yu	Version	1.0.0	Date	2010/2/12	Page	4/7

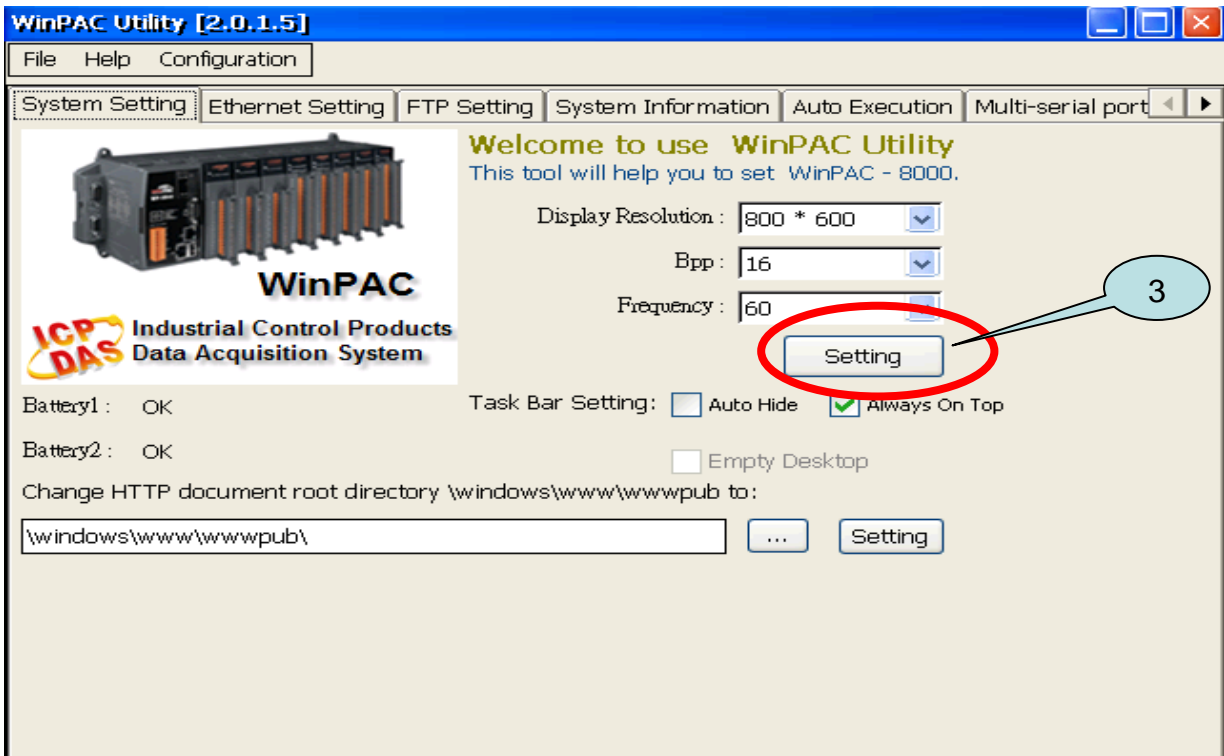
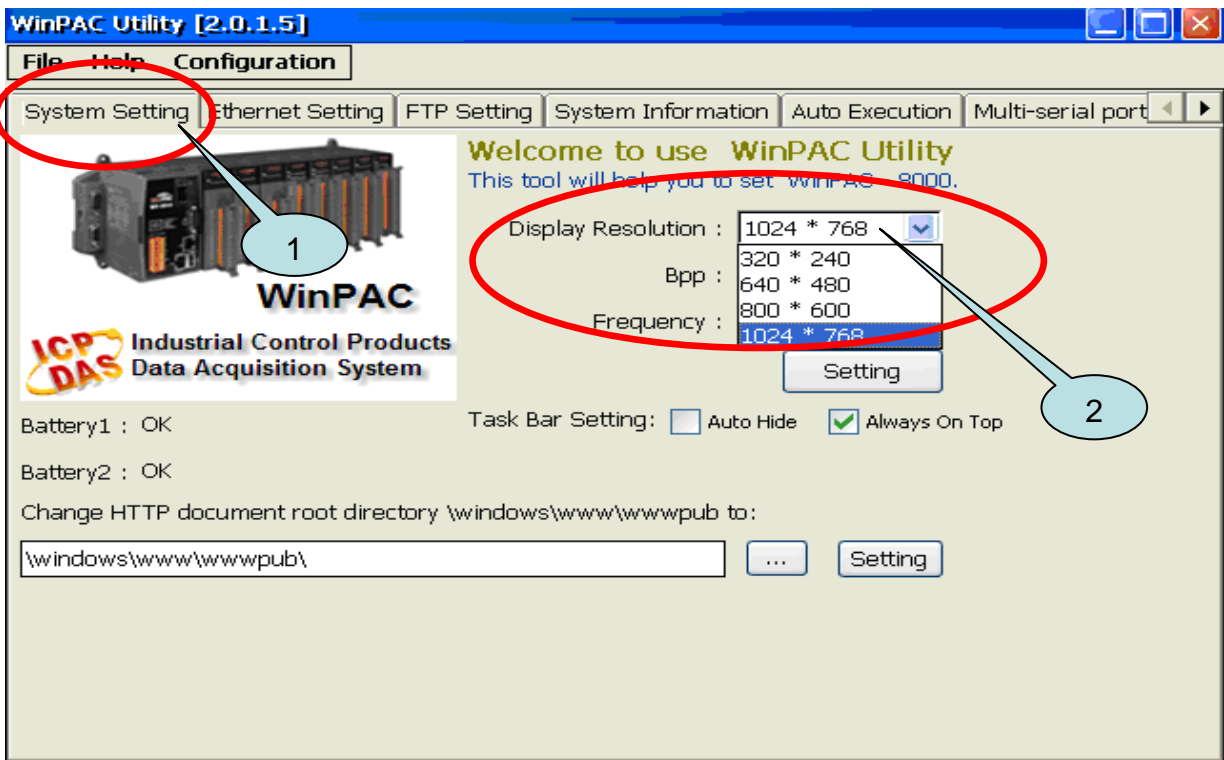
The desktop of the remote PAC will be displayed on the Host PC as below.



Classification	System and Application FAQ on WinCE PAC				No.	1-009-04	
Author	Tunglu-Yu	Version	1.0.0	Date	2010/2/12	Page	5/7

Step5: Change the display resolution.

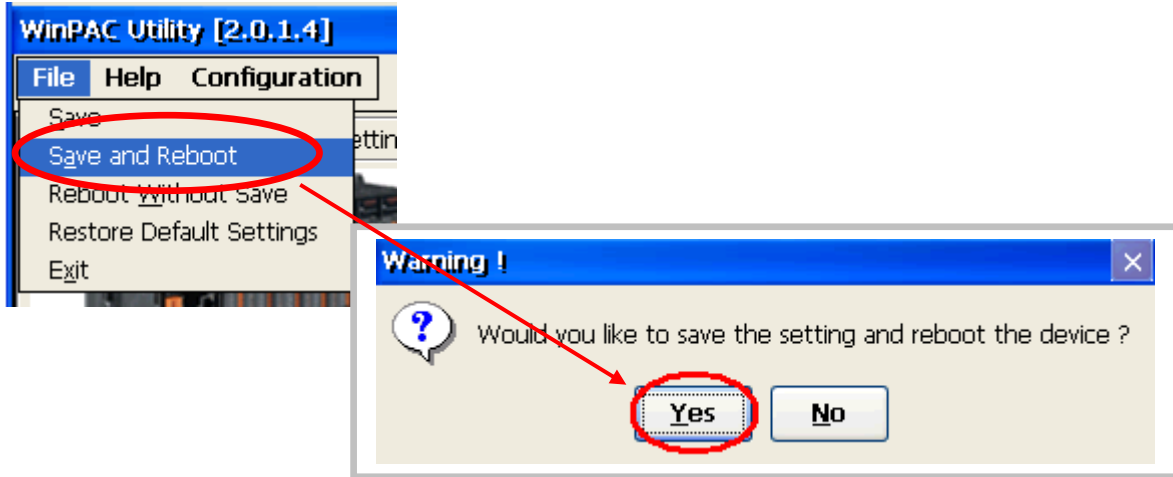
5.1. Start the WinPAC Utility on the desktop, select the display resolution, bpp and frequency then press the “**Setting**” button below the frequency column.



Classification	System and Application FAQ on WinCE PAC				No.	1-009-04	
Author	Tunglu-Yu	Version	1.0.0	Date	2010/2/12	Page	6/7

Step 6: Save and Reboot your WinPAC.

- 6.1. Click the **"File"** → **"Save and Reboot"** menu option.
- 6.2. Click the **"Yes"** button and wait for the device to reboot.



Classification	System and Application FAQ on WinCE PAC				No.	1-009-04	
Author	Tunglu-Yu	Version	1.0.0	Date	2010/2/12	Page	7/7

Revision History

Revision	Date	Description
1.0.0	2010/02/12	Initial release